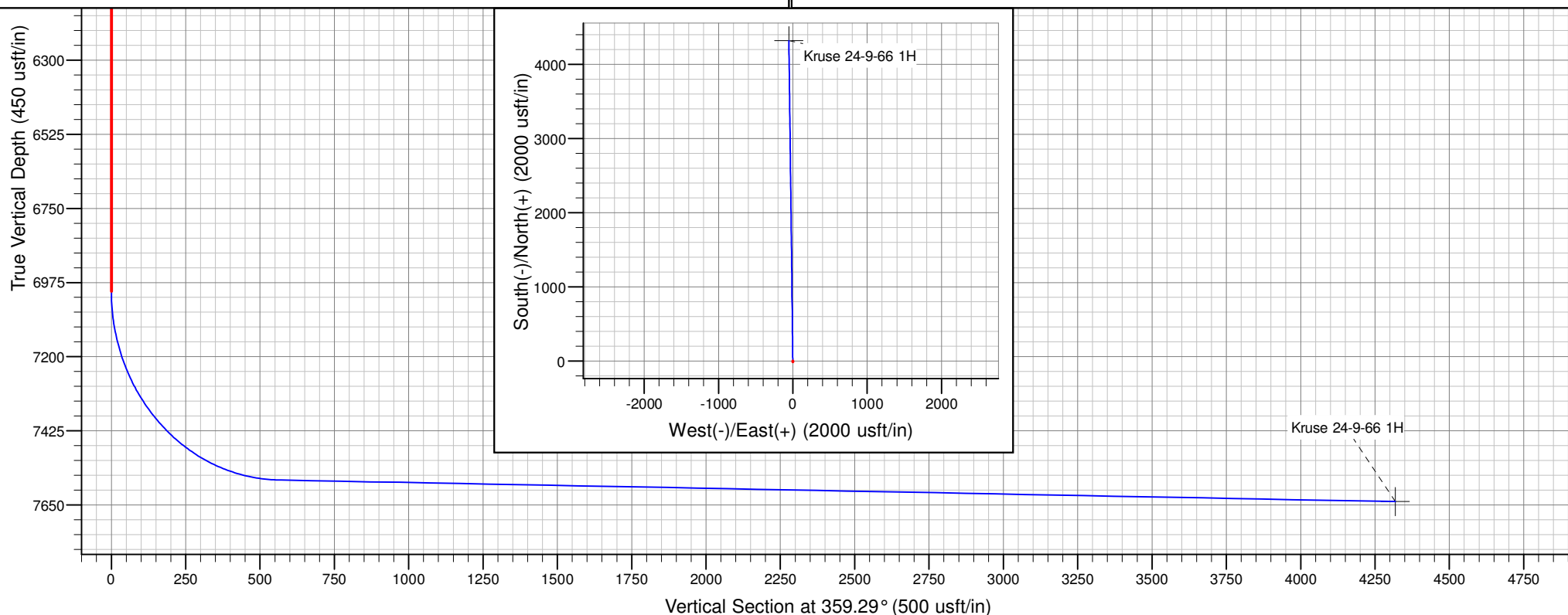


Project: Weld - DJ Basin
Site: Kruse 24-9-66 1H
Well: Kruse 24-9-66 1H
Wellbore: Kruse 24-9-66 1H
Design: Design #1

PROJECT DETAILS: Weld - DJ Basin

Geodetic System: US State Plane 1927 (Exact solution)
Datum: NAD 1927 (NADCON CONUS)
Ellipsoid: Clarke 1866
Zone: Colorado North 501

System Datum: Mean Sea Level



SECTION DETAILS

Sec	MD	Inc	Azi	TVD	+N/-S	+E/-W	Dleg	TFace	VSect	Target
1	0.0	0.00	0.00	0.0	0.0	0.0	0.00	0.00	0.0	
2	7001.6	0.00	0.00	7001.6	0.0	0.0	0.00	0.00	0.0	
3	7891.6	89.00	359.29	7574.4	562.9	-6.9	10.00	359.29	563.0	
4	11647.6	89.00	359.29	7640.0	4318.1	-53.2	0.00	0.00	4318.4	Kruse 24-9-66 1H

Chesapeake Energy -Rockies District

Weld - DJ Basin

Kruse 24-9-66 1H

Kruse 24-9-66 1H

Kruse 24-9-66 1H

Plan: Design #1

Standard Planning Report

30 September, 2011

Chesapeake Operating

Planning Report

Database:	Drilling Database	Local Co-ordinate Reference:	Well Kruse 24-9-66 1H
Company:	Chesapeake Energy -Rockies District	TVD Reference:	WELL @ 0.0usft (Original Well Elev)
Project:	Weld - DJ Basin	MD Reference:	WELL @ 0.0usft (Original Well Elev)
Site:	Kruse 24-9-66 1H	North Reference:	Grid
Well:	Kruse 24-9-66 1H	Survey Calculation Method:	Minimum Curvature
Wellbore:	Kruse 24-9-66 1H		
Design:	Design #1		

Project	Weld - DJ Basin		
Map System:	US State Plane 1927 (Exact solution)	System Datum:	Mean Sea Level
Geo Datum:	NAD 1927 (NADCON CONUS)		
Map Zone:	Colorado North 501		

Site		Kruse 24-9-66 1H				
Site Position:		Northing:	508,263.88 ft	Latitude:	40° 43' 33.81373192 N	
From:	Map	Easting:	2,213,142.23 ft	Longitude:	104° 43' 51.72401080 W	
Position Uncertainty:		0.0 usft	Slot Radius:	13.200 in	Grid Convergence:	0.50 °

Well	Kruse 24-9-66 1H					
Well Position	+N/-S	0.0 usft	Northing:	508,263.88 ft	Latitude:	40° 43' 33.81373192 N
	+E/-W	0.0 usft	Easting:	2,213,142.23 ft	Longitude:	104° 43' 51.72401080 W
Position Uncertainty		0.0 usft	Wellhead Elevation:		Ground Level:	0.0 usft

Wellbore	Kruse 24-9-66 1H				
Magnetics	Model Name	Sample Date	Declination (°)	Dip Angle (°)	Field Strength (nT)
	IGRF200510	9/30/2011	8.79	67.32	53,337

Design	Design #1			
Audit Notes:				
Version:	Phase:	PROTOTYPE	Tie On Depth:	0.0
Vertical Section:	Depth From (TVD) (usft)	+N/-S (usft)	+E/-W (usft)	Direction (°)
	0.0	0.0	0.0	359.29

Plan Sections										
Measured Depth (usft)	Inclination (°)	Azimuth (°)	Vertical Depth (usft)	+N/-S (usft)	+E/-W (usft)	Dogleg Rate (°/100usft)	Build Rate (°/100usft)	Turn Rate (°/100usft)	TFO (°)	Target
0.0	0.00	0.00	0.0	0.0	0.0	0.00	0.00	0.00	0.00	
7,001.6	0.00	0.00	7,001.6	0.0	0.0	0.00	0.00	0.00	0.00	
7,891.6	89.00	359.29	7,574.4	562.9	-6.9	10.00	10.00	0.00	359.29	
11,647.6	89.00	359.29	7,640.0	4,318.1	-53.2	0.00	0.00	0.00	0.00	Kruse 24-9-66 1H

Chesapeake Operating

Planning Report

Database:	Drilling Database	Local Co-ordinate Reference:	Well Kruse 24-9-66 1H
Company:	Chesapeake Energy -Rockies District	TVD Reference:	WELL @ 0.0usft (Original Well Elev)
Project:	Weld - DJ Basin	MD Reference:	WELL @ 0.0usft (Original Well Elev)
Site:	Kruse 24-9-66 1H	North Reference:	Grid
Well:	Kruse 24-9-66 1H	Survey Calculation Method:	Minimum Curvature
Wellbore:	Kruse 24-9-66 1H		
Design:	Design #1		

Planned Survey									
Measured Depth (usft)	Inclination (°)	Azimuth (°)	Vertical Depth (usft)	+N/-S (usft)	+E/-W (usft)	Vertical Section (usft)	Dogleg Rate (°/100usft)	Build Rate (°/100usft)	Turn Rate (°/100usft)
0.0	0.00	0.00	0.0	0.0	0.0	0.0	0.00	0.00	0.00
100.0	0.00	0.00	100.0	0.0	0.0	0.0	0.00	0.00	0.00
200.0	0.00	0.00	200.0	0.0	0.0	0.0	0.00	0.00	0.00
300.0	0.00	0.00	300.0	0.0	0.0	0.0	0.00	0.00	0.00
400.0	0.00	0.00	400.0	0.0	0.0	0.0	0.00	0.00	0.00
500.0	0.00	0.00	500.0	0.0	0.0	0.0	0.00	0.00	0.00
600.0	0.00	0.00	600.0	0.0	0.0	0.0	0.00	0.00	0.00
700.0	0.00	0.00	700.0	0.0	0.0	0.0	0.00	0.00	0.00
800.0	0.00	0.00	800.0	0.0	0.0	0.0	0.00	0.00	0.00
900.0	0.00	0.00	900.0	0.0	0.0	0.0	0.00	0.00	0.00
1,000.0	0.00	0.00	1,000.0	0.0	0.0	0.0	0.00	0.00	0.00
1,100.0	0.00	0.00	1,100.0	0.0	0.0	0.0	0.00	0.00	0.00
1,200.0	0.00	0.00	1,200.0	0.0	0.0	0.0	0.00	0.00	0.00
1,300.0	0.00	0.00	1,300.0	0.0	0.0	0.0	0.00	0.00	0.00
1,400.0	0.00	0.00	1,400.0	0.0	0.0	0.0	0.00	0.00	0.00
1,500.0	0.00	0.00	1,500.0	0.0	0.0	0.0	0.00	0.00	0.00
1,600.0	0.00	0.00	1,600.0	0.0	0.0	0.0	0.00	0.00	0.00
1,700.0	0.00	0.00	1,700.0	0.0	0.0	0.0	0.00	0.00	0.00
1,800.0	0.00	0.00	1,800.0	0.0	0.0	0.0	0.00	0.00	0.00
1,900.0	0.00	0.00	1,900.0	0.0	0.0	0.0	0.00	0.00	0.00
2,000.0	0.00	0.00	2,000.0	0.0	0.0	0.0	0.00	0.00	0.00
2,100.0	0.00	0.00	2,100.0	0.0	0.0	0.0	0.00	0.00	0.00
2,200.0	0.00	0.00	2,200.0	0.0	0.0	0.0	0.00	0.00	0.00
2,300.0	0.00	0.00	2,300.0	0.0	0.0	0.0	0.00	0.00	0.00
2,400.0	0.00	0.00	2,400.0	0.0	0.0	0.0	0.00	0.00	0.00
2,500.0	0.00	0.00	2,500.0	0.0	0.0	0.0	0.00	0.00	0.00
2,600.0	0.00	0.00	2,600.0	0.0	0.0	0.0	0.00	0.00	0.00
2,700.0	0.00	0.00	2,700.0	0.0	0.0	0.0	0.00	0.00	0.00
2,800.0	0.00	0.00	2,800.0	0.0	0.0	0.0	0.00	0.00	0.00
2,900.0	0.00	0.00	2,900.0	0.0	0.0	0.0	0.00	0.00	0.00
3,000.0	0.00	0.00	3,000.0	0.0	0.0	0.0	0.00	0.00	0.00
3,100.0	0.00	0.00	3,100.0	0.0	0.0	0.0	0.00	0.00	0.00
3,200.0	0.00	0.00	3,200.0	0.0	0.0	0.0	0.00	0.00	0.00
3,300.0	0.00	0.00	3,300.0	0.0	0.0	0.0	0.00	0.00	0.00
3,400.0	0.00	0.00	3,400.0	0.0	0.0	0.0	0.00	0.00	0.00
3,500.0	0.00	0.00	3,500.0	0.0	0.0	0.0	0.00	0.00	0.00
3,600.0	0.00	0.00	3,600.0	0.0	0.0	0.0	0.00	0.00	0.00
3,700.0	0.00	0.00	3,700.0	0.0	0.0	0.0	0.00	0.00	0.00
3,800.0	0.00	0.00	3,800.0	0.0	0.0	0.0	0.00	0.00	0.00
3,900.0	0.00	0.00	3,900.0	0.0	0.0	0.0	0.00	0.00	0.00
4,000.0	0.00	0.00	4,000.0	0.0	0.0	0.0	0.00	0.00	0.00
4,100.0	0.00	0.00	4,100.0	0.0	0.0	0.0	0.00	0.00	0.00
4,200.0	0.00	0.00	4,200.0	0.0	0.0	0.0	0.00	0.00	0.00
4,300.0	0.00	0.00	4,300.0	0.0	0.0	0.0	0.00	0.00	0.00
4,400.0	0.00	0.00	4,400.0	0.0	0.0	0.0	0.00	0.00	0.00
4,500.0	0.00	0.00	4,500.0	0.0	0.0	0.0	0.00	0.00	0.00
4,600.0	0.00	0.00	4,600.0	0.0	0.0	0.0	0.00	0.00	0.00
4,700.0	0.00	0.00	4,700.0	0.0	0.0	0.0	0.00	0.00	0.00
4,800.0	0.00	0.00	4,800.0	0.0	0.0	0.0	0.00	0.00	0.00
4,900.0	0.00	0.00	4,900.0	0.0	0.0	0.0	0.00	0.00	0.00
5,000.0	0.00	0.00	5,000.0	0.0	0.0	0.0	0.00	0.00	0.00
5,100.0	0.00	0.00	5,100.0	0.0	0.0	0.0	0.00	0.00	0.00
5,200.0	0.00	0.00	5,200.0	0.0	0.0	0.0	0.00	0.00	0.00
5,300.0	0.00	0.00	5,300.0	0.0	0.0	0.0	0.00	0.00	0.00

Chesapeake Operating

Planning Report

Database:	Drilling Database	Local Co-ordinate Reference:	Well Kruse 24-9-66 1H
Company:	Chesapeake Energy -Rockies District	TVD Reference:	WELL @ 0.0usft (Original Well Elev)
Project:	Weld - DJ Basin	MD Reference:	WELL @ 0.0usft (Original Well Elev)
Site:	Kruse 24-9-66 1H	North Reference:	Grid
Well:	Kruse 24-9-66 1H	Survey Calculation Method:	Minimum Curvature
Wellbore:	Kruse 24-9-66 1H		
Design:	Design #1		

Planned Survey									
Measured Depth (usft)	Inclination (°)	Azimuth (°)	Vertical Depth (usft)	+N/-S (usft)	+E/-W (usft)	Vertical Section (usft)	Dogleg Rate (°/100usft)	Build Rate (°/100usft)	Turn Rate (°/100usft)
5,400.0	0.00	0.00	5,400.0	0.0	0.0	0.0	0.00	0.00	0.00
5,500.0	0.00	0.00	5,500.0	0.0	0.0	0.0	0.00	0.00	0.00
5,600.0	0.00	0.00	5,600.0	0.0	0.0	0.0	0.00	0.00	0.00
5,700.0	0.00	0.00	5,700.0	0.0	0.0	0.0	0.00	0.00	0.00
5,800.0	0.00	0.00	5,800.0	0.0	0.0	0.0	0.00	0.00	0.00
5,900.0	0.00	0.00	5,900.0	0.0	0.0	0.0	0.00	0.00	0.00
6,000.0	0.00	0.00	6,000.0	0.0	0.0	0.0	0.00	0.00	0.00
6,100.0	0.00	0.00	6,100.0	0.0	0.0	0.0	0.00	0.00	0.00
6,200.0	0.00	0.00	6,200.0	0.0	0.0	0.0	0.00	0.00	0.00
6,300.0	0.00	0.00	6,300.0	0.0	0.0	0.0	0.00	0.00	0.00
6,400.0	0.00	0.00	6,400.0	0.0	0.0	0.0	0.00	0.00	0.00
6,500.0	0.00	0.00	6,500.0	0.0	0.0	0.0	0.00	0.00	0.00
6,600.0	0.00	0.00	6,600.0	0.0	0.0	0.0	0.00	0.00	0.00
6,700.0	0.00	0.00	6,700.0	0.0	0.0	0.0	0.00	0.00	0.00
6,800.0	0.00	0.00	6,800.0	0.0	0.0	0.0	0.00	0.00	0.00
6,900.0	0.00	0.00	6,900.0	0.0	0.0	0.0	0.00	0.00	0.00
7,000.0	0.00	0.00	7,000.0	0.0	0.0	0.0	0.00	0.00	0.00
7,001.6	0.00	0.00	7,001.6	0.0	0.0	0.0	0.00	0.00	0.00
7,100.0	9.84	359.29	7,099.5	8.4	-0.1	8.4	10.00	10.00	0.00
7,200.0	19.84	359.29	7,196.1	34.0	-0.4	34.0	10.00	10.00	0.00
7,300.0	29.84	359.29	7,286.7	76.0	-0.9	76.0	10.00	10.00	0.00
7,400.0	39.84	359.29	7,368.7	133.0	-1.6	133.0	10.00	10.00	0.00
7,500.0	49.84	359.29	7,439.5	203.4	-2.5	203.5	10.00	10.00	0.00
7,600.0	59.84	359.29	7,497.0	285.1	-3.5	285.1	10.00	10.00	0.00
7,700.0	69.84	359.29	7,539.4	375.5	-4.6	375.5	10.00	10.00	0.00
7,800.0	79.84	359.29	7,565.6	471.9	-5.8	471.9	10.00	10.00	0.00
7,891.6	89.00	359.29	7,574.4	562.9	-6.9	563.0	10.00	10.00	0.00
7,900.0	89.00	359.29	7,574.6	571.3	-7.0	571.4	0.00	0.00	0.00
8,000.0	89.00	359.29	7,576.3	671.3	-8.3	671.4	0.00	0.00	0.00
8,100.0	89.00	359.29	7,578.1	771.3	-9.5	771.3	0.00	0.00	0.00
8,200.0	89.00	359.29	7,579.8	871.3	-10.7	871.3	0.00	0.00	0.00
8,300.0	89.00	359.29	7,581.6	971.2	-12.0	971.3	0.00	0.00	0.00
8,400.0	89.00	359.29	7,583.3	1,071.2	-13.2	1,071.3	0.00	0.00	0.00
8,500.0	89.00	359.29	7,585.1	1,171.2	-14.4	1,171.3	0.00	0.00	0.00
8,600.0	89.00	359.29	7,586.8	1,271.2	-15.7	1,271.3	0.00	0.00	0.00
8,700.0	89.00	359.29	7,588.6	1,371.2	-16.9	1,371.3	0.00	0.00	0.00
8,800.0	89.00	359.29	7,590.3	1,471.1	-18.1	1,471.2	0.00	0.00	0.00
8,900.0	89.00	359.29	7,592.0	1,571.1	-19.4	1,571.2	0.00	0.00	0.00
9,000.0	89.00	359.29	7,593.8	1,671.1	-20.6	1,671.2	0.00	0.00	0.00
9,100.0	89.00	359.29	7,595.5	1,771.1	-21.8	1,771.2	0.00	0.00	0.00
9,200.0	89.00	359.29	7,597.3	1,871.0	-23.1	1,871.2	0.00	0.00	0.00
9,300.0	89.00	359.29	7,599.0	1,971.0	-24.3	1,971.2	0.00	0.00	0.00
9,400.0	89.00	359.29	7,600.8	2,071.0	-25.5	2,071.2	0.00	0.00	0.00
9,500.0	89.00	359.29	7,602.5	2,171.0	-26.8	2,171.1	0.00	0.00	0.00
9,600.0	89.00	359.29	7,604.3	2,270.9	-28.0	2,271.1	0.00	0.00	0.00
9,700.0	89.00	359.29	7,606.0	2,370.9	-29.2	2,371.1	0.00	0.00	0.00
9,800.0	89.00	359.29	7,607.8	2,470.9	-30.5	2,471.1	0.00	0.00	0.00
9,900.0	89.00	359.29	7,609.5	2,570.9	-31.7	2,571.1	0.00	0.00	0.00
10,000.0	89.00	359.29	7,611.2	2,670.9	-32.9	2,671.1	0.00	0.00	0.00
10,100.0	89.00	359.29	7,613.0	2,770.8	-34.2	2,771.0	0.00	0.00	0.00
10,200.0	89.00	359.29	7,614.7	2,870.8	-35.4	2,871.0	0.00	0.00	0.00
10,300.0	89.00	359.29	7,616.5	2,970.8	-36.6	2,971.0	0.00	0.00	0.00
10,400.0	89.00	359.29	7,618.2	3,070.8	-37.9	3,071.0	0.00	0.00	0.00
10,500.0	89.00	359.29	7,620.0	3,170.7	-39.1	3,171.0	0.00	0.00	0.00

Chesapeake Operating

Planning Report

Database:	Drilling Database	Local Co-ordinate Reference:	Well Kruse 24-9-66 1H
Company:	Chesapeake Energy -Rockies District	TVD Reference:	WELL @ 0.0usft (Original Well Elev)
Project:	Weld - DJ Basin	MD Reference:	WELL @ 0.0usft (Original Well Elev)
Site:	Kruse 24-9-66 1H	North Reference:	Grid
Well:	Kruse 24-9-66 1H	Survey Calculation Method:	Minimum Curvature
Wellbore:	Kruse 24-9-66 1H		
Design:	Design #1		

Planned Survey										
Measured Depth (usft)	Inclination (°)	Azimuth (°)	Vertical Depth (usft)	+N/-S (usft)	+E/-W (usft)	Vertical Section (usft)	Dogleg Rate (°/100usft)	Build Rate (°/100usft)	Turn Rate (°/100usft)	
10,600.0	89.00	359.29	7,621.7	3,270.7	-40.3	3,271.0	0.00	0.00	0.00	
10,700.0	89.00	359.29	7,623.5	3,370.7	-41.6	3,371.0	0.00	0.00	0.00	
10,800.0	89.00	359.29	7,625.2	3,470.7	-42.8	3,470.9	0.00	0.00	0.00	
10,900.0	89.00	359.29	7,627.0	3,570.7	-44.0	3,570.9	0.00	0.00	0.00	
11,000.0	89.00	359.29	7,628.7	3,670.6	-45.2	3,670.9	0.00	0.00	0.00	
11,100.0	89.00	359.29	7,630.4	3,770.6	-46.5	3,770.9	0.00	0.00	0.00	
11,200.0	89.00	359.29	7,632.2	3,870.6	-47.7	3,870.9	0.00	0.00	0.00	
11,300.0	89.00	359.29	7,633.9	3,970.6	-48.9	3,970.9	0.00	0.00	0.00	
11,400.0	89.00	359.29	7,635.7	4,070.5	-50.2	4,070.8	0.00	0.00	0.00	
11,500.0	89.00	359.29	7,637.4	4,170.5	-51.4	4,170.8	0.00	0.00	0.00	
11,600.0	89.00	359.29	7,639.2	4,270.5	-52.6	4,270.8	0.00	0.00	0.00	
11,647.6	89.00	359.29	7,640.0	4,318.1	-53.2	4,318.4	0.00	0.00	0.00	

Design Targets										
Target Name	Dip Angle (°)	Dip Dir. (°)	TVD (usft)	+N/-S (usft)	+E/-W (usft)	Northing (ft)	Easting (ft)	Latitude		
- hit/miss target										
- Shape										
Kruse 24-9-66 1H	0.00	0.00	7,640.0	4,318.1	-53.2	512,582.00	2,213,089.00	0° 44' 16.48535841 N 4° 43' 51.92903440 W		
- plan hits target center										
- Point										