

1625 Broadway
Suite 2000
Denver, CO 80202

Tel: 303.228.4000
Fax: 303.228.4280
www.nobleenergyinc.com



October 10, 2011

Colorado Oil and Gas Conservation Commission
The Chancery Building
1120 Lincoln Street, Suite 801
Denver, CO 80203

Attn: Mr. David Neslin, Director

RE: **Hoffman C02-65HN**
Niobrara New Drill
Township 4 North, Range 64 West, 6th P.M.
Section 2: NE/4SW/4: 2391' FSL & 2445' FWL (Surface Location)
Section 2: NW/4SE/4: 2430' FSL & 3179' FWL (Begin Production Location)
Section 1: SE/4NE/4: 2540' FNL & 535' FEL (Bottom Hole Location)
Weld County, Colorado

Mr. Neslin:

Noble Energy, Inc. ("NEI") is planning to drill the captioned boundary well in accordance with the provisions of COGCC Rule 318A.e.

NEI's proposed wellbore spacing unit consists of the S/2N/2 & N/2S/2, Sec. 1, S/2NE/4 & N/2SE/4, Sec. 2, T4N, R64 W, creating a 480-acre wellbore spacing unit for the Niobrara formation. NEI is not the only owner within the proposed wellbore spacing unit and as such provided notice to the remaining owner(s) within said proposed spacing unit as required under COGCC Rule 318A(l).e(6). Copies of the required notice letter(s) is/are on file at the NEI offices. The required thirty (30) day notice period has elapsed absent the receipt by NEI of an objection to said proposal by the owner(s) within the proposed spacing unit for this well.

Enclosed are copies of the following documents to assist you in your review and approval of NEI's proposed APD for the captioned well:

- Map & plat illustrating proposed wellbore spacing unit.

Thank you for your attention to the enclosed. NEI respectfully requests that the COGCC review the enclosed information and approve the Application for Permit to Drill the captioned well.

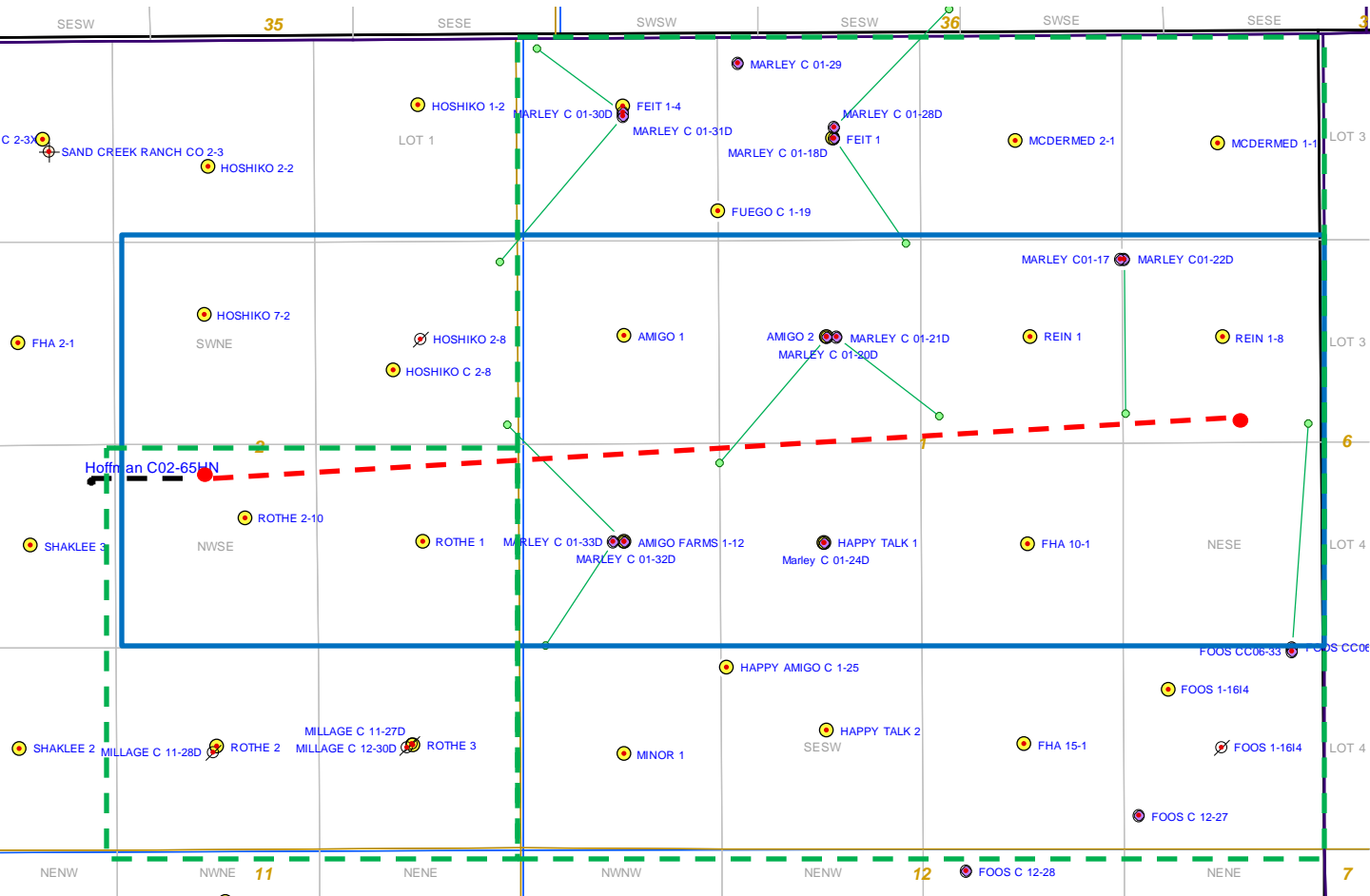
Sincerely,

Justin Garrett
Regulatory Specialist
Noble Energy Inc.

Hoffman C02-65HN

Proposed Spacing Unit - Noble Energy, Inc

S/2N/2, N/2S/2 Section 1, Township 4 North, Range 64 West
S/2NE/4, N/2SE/4 Section 2, Township 4 North, Range 64 West



Legend



Proposed 480 acre spacing unit



Bottom Hole Location



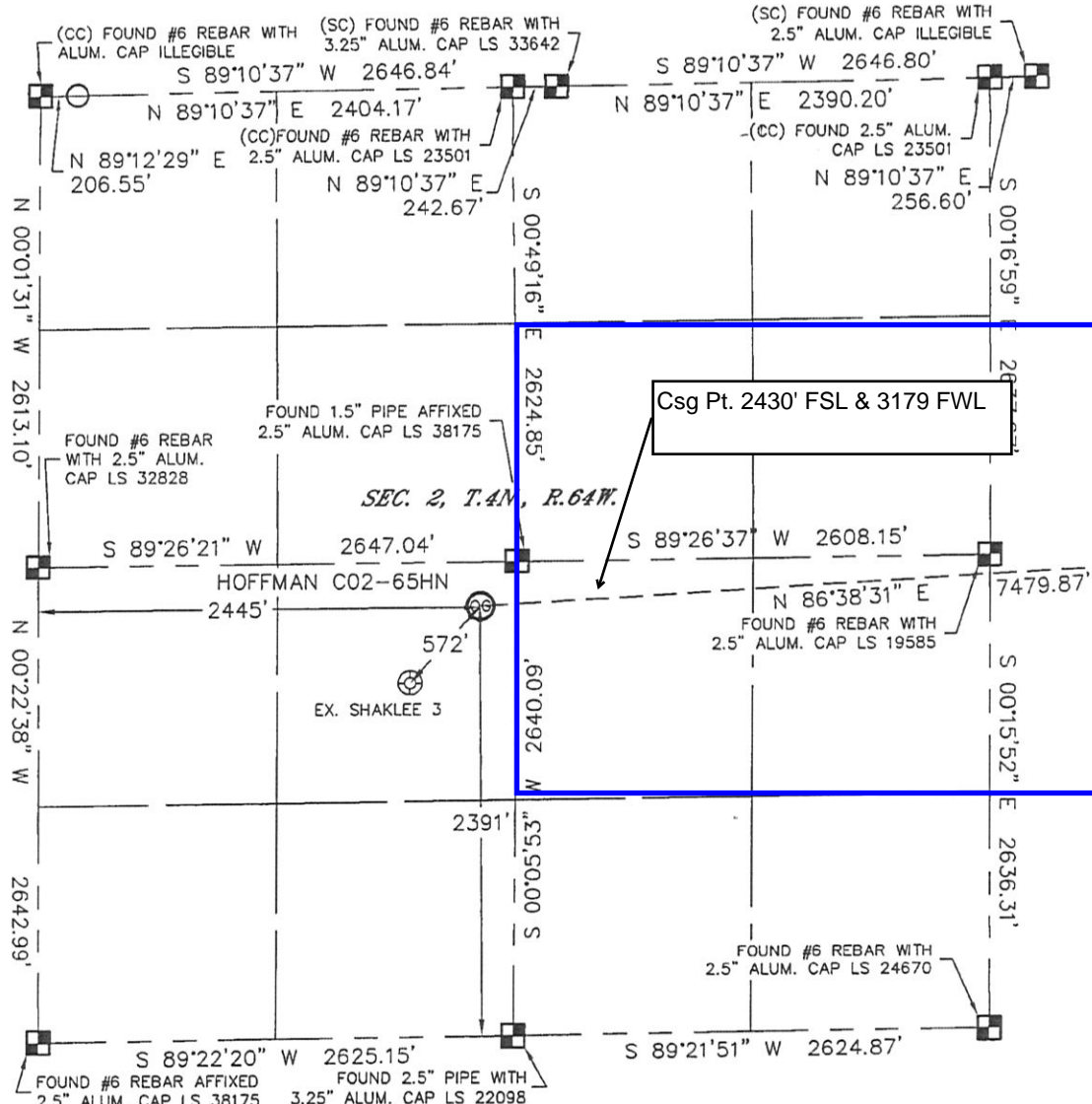
Bottom Hole Located SE/4, Sec. 2, All, Sec. 1, T4N, R64W

The Marley C01-20D, 01-21D, and 01-22D will not be drilled.

WELL LOCATION CERTIFICATE

THIS MAP DOES NOT REPRESENT A BOUNDARY SURVEY

SECTION: 2
TOWNSHIP: 4N
RANGE: 64W



In accordance with a request from Matt Campbell with Noble Energy Inc. Lat40°, LLC has determined the surface location of the HOFFMAN C02-65HN to be 2391' from the SOUTH line and 2445' from the WEST line as measured at right angles from the section lines of Section 2, Township 4 North, Range 64 West and the bottom hole to be 2540' from the NORTH line and 535' from the EAST line as measured at right angles from the section lines of Section 1, Township 4 North, Range 64 West of the Sixth Principal Meridian, County of Weld, State of Colorado.

I hereby state that this Well Location Certificate was prepared by me, or under my direct supervision, that the fieldwork was completed on 12-14-10, for and on behalf of Noble Energy Inc. That this is not a Land Survey Plat or an Improvement Survey Plat, and that it is not to be relied upon for establishment of fence, building, or other future improvement lines.

SURFACE LOCATION
LATITUDE: 40.34074°N
LONGITUDE: 104.51827°W
PDOP: 1.3
ELEV: 4619
1/4, 1/4: NE1/4SW1/4
NEAREST PROPERTY LINE: 200' EAST

BOTTOM HOLE
LATITUDE: 40.34171°N
LONGITUDE: 104.49148°W

NOTE:

- 1) Bearings shown are Grid Bearings of the Colorado State Plane Coordinate System, North Zone, North American Datum 1983/2007. The lineal dimensions as contained herein are based upon the "U.S. Survey Foot."
- 2) Ground elevations are based on an observed GPS elevation (NAVD 1988 DATUM).
- 3) NEAREST EXISTING WELL: SHAKLEE 3 572'
- 4) IMPROVEMENTS: See LOCATION DRAWING for all visible improvements within 400' of disturbed area.
- 5) SURFACE USE: CROP DRYLAND
- 6) INSTRUMENT OPERATOR: BRIAN BRINKMAN

NOTE

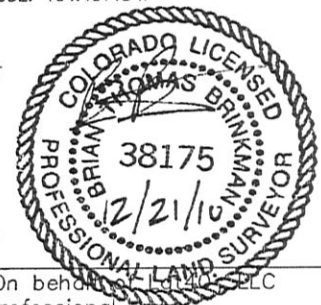
According to Colorado law, you must commence any legal action based upon any defect in this W.L.C. within three years after you discover such defect. In no event, may any action based upon any defect in this survey be commenced more than ten years after the date of the certificate shown hereon. (13-80-105 C.R.S.)

LEGEND

- = ALIQUOT MONUMENT AS DESCRIBED
- = CALCULATED POSITION

SHEET 1 of 2

Brian T. Brinkman—On behalf of Lat40°, LLC
Colorado Licensed Professional
Land Surveyor No. 38175 PROJECT#: 2010170

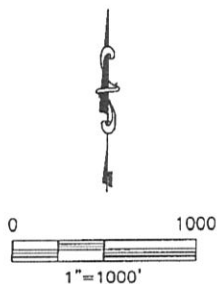
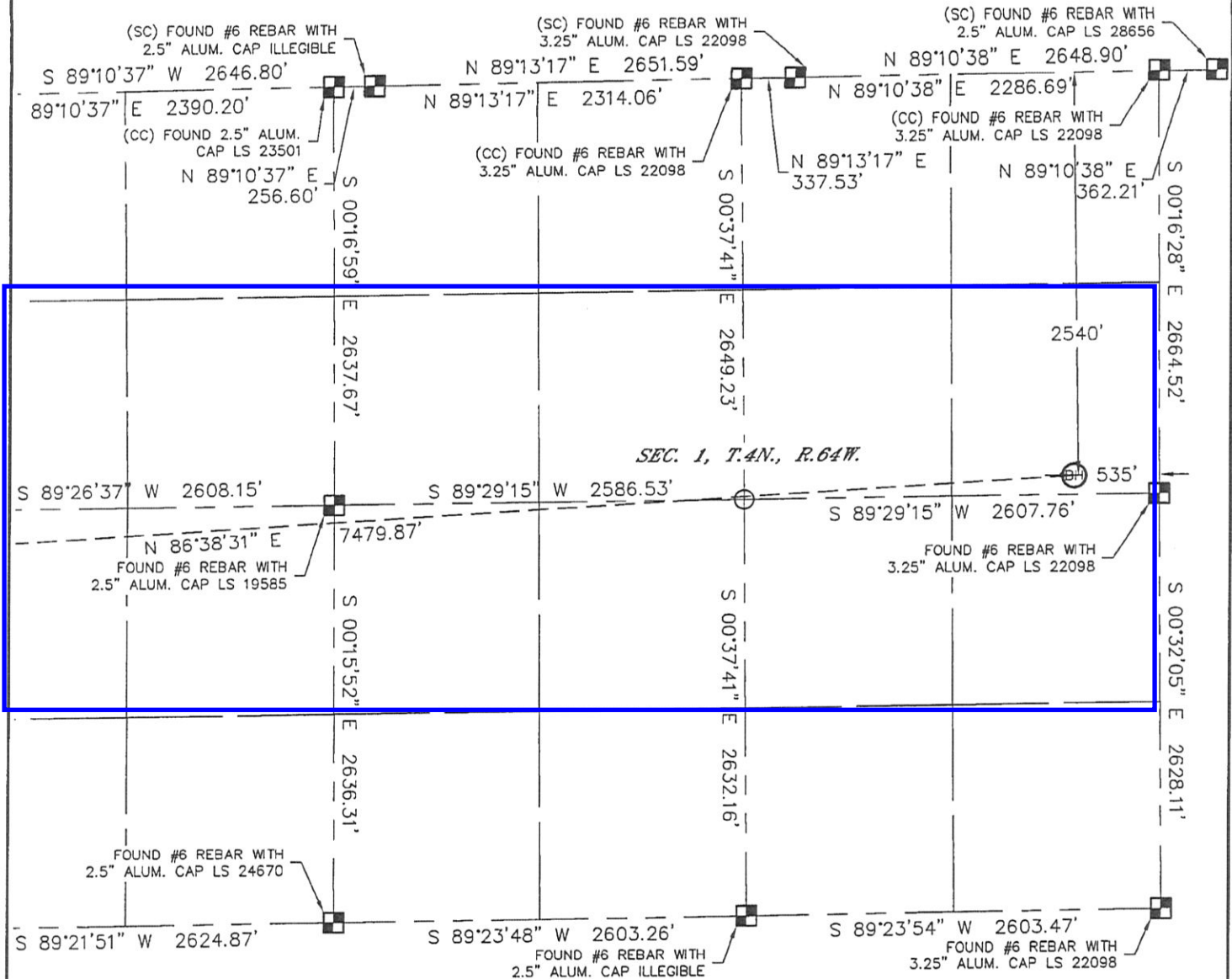


Lat40°, LLC 1635 Foxtrail Drive, Suite 325 Loveland, CO 80538

WELL LOCATION CERTIFICATE

THIS MAP DOES NOT REPRESENT A BOUNDARY SURVEY

SECTION: 2
TOWNSHIP: 4N
RANGE: 64W



NOTE
According to Colorado law, you must commence any legal action based upon any defect in this W.L.C. within three years after you discover such defect. In no event, may any action based upon any defect in this survey be commenced more than ten years after the date of the certificate shown hereon. (13-80-105 C.R.S.)

LEGEND

-  = ALIQUOT MONUMENT AS DESCRIBED
-  = CALCULATED POSITION

SHEET 2 of 2

Brian T. Brinkman—On behalf of Lat40°, LLC
Colorado Licensed Professional
Land Surveyor No. 38175 PROJECT#: 2010170



Lat40°, LLC

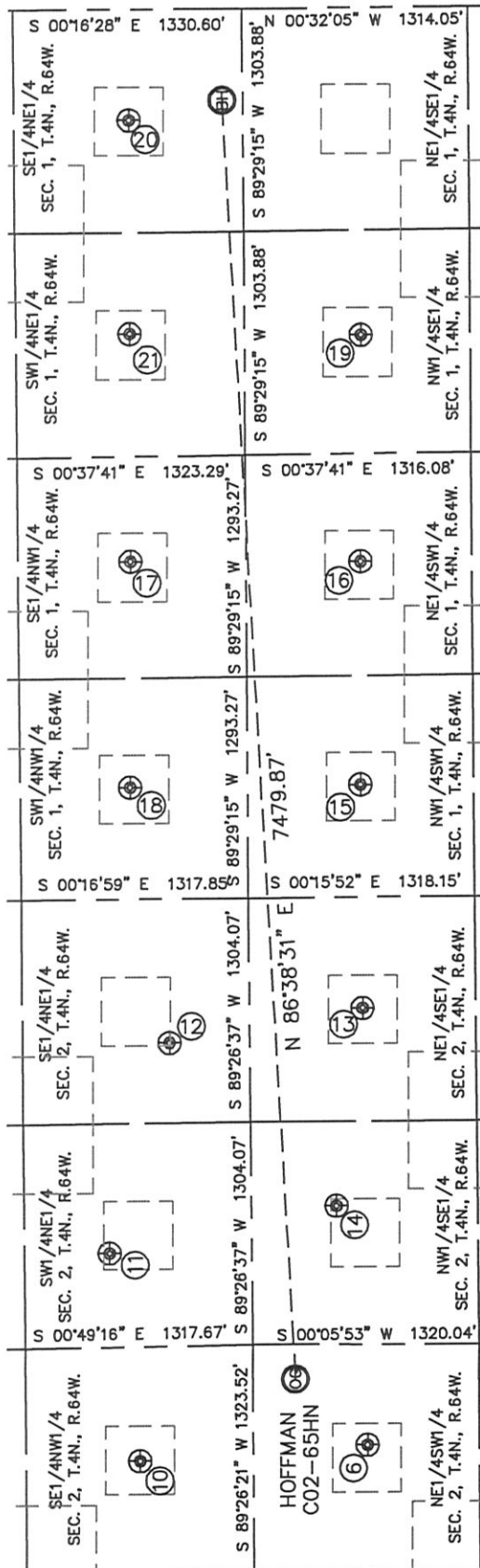
1635 Foxtrail Drive, Suite 325

Loveland, CO 80538

SITE SKETCH

HOFFMAN C02-65HN

SECTION: 2
TOWNSHIP: 4N
RANGE: 64W



⑥

SHAKLEE 3
NE1/4SW1/4
1974' FSL
2056' FWL
LAT-40.33959°N
LONG-104.51968°W
PDOP: 1.6
ELEV: 4622

⑫

HOSHIKO C2-8
SE1/4NE1/4
2167' FNL
839' FEL
LAT-40.34269°N
LONG-104.51119°W
PDOP: 1.2
ELEV: 4612

⑮

AMIGO FARMS 1-12
NW1/4SW1/4
1978' FSL
660' FWL
LAT-40.33960°N
LONG-104.50584°W
PDOP: 1.2
ELEV: 4611

⑱

AMIGO 1
SW1/4NW1/4
1958' FNL
656' FWL
LAT-40.34328°N
LONG-104.50582°W
PDOP: 1.2
ELEV: 4610

⑩

FHA 2-1
SE1/4NW1/4
1964' FNL
1973' FWL
LAT-40.34323°N
LONG-104.51994°W
PDOP: 1.7
ELEV: 4636

⑬

ROTHER 1
NE1/4SE1/4
1978' FSL
647' FEL
LAT-40.33960°N
LONG-104.51053°W
PDOP: 1.1
ELEV: 4615

⑯

HAPPY TALK 1
NE1/4SW1/4
1966' FSL
1962' FWL
LAT-40.33957°N
LONG-104.50117°W
PDOP: 1.6
ELEV: 4610

⑲

FHA 10-1
NW1/4SE1/4
1953' FSL
1914' FEL
LAT-40.33953°N
LONG-104.49643°W
PDOP: 1.7
ELEV: 4609

⑳

REIN 1
SW1/4NE1/4
1986' FNL
1896' FEL
LAT-40.34322°N
LONG-104.49635°W
PDOP: 2.2
ELEV: 4604

⑪

HOSHIKO 7-2
SW1/4NE1/4
1801' FNL
2064' FEL
LAT-40.34368°N
LONG-104.51558°W
PDOP: 1.7
ELEV: 4615

⑭

ROTHER 2-10
NW1/4SE1/4
2144' FSL
1801' FEL
LAT-40.34006°N
LONG-104.51466°W
PDOP: 1.7
ELEV: 4617

⑰

AMIGO 2
SE1/4NW1/4
1976' FNL
1972' FWL
LAT-40.34324°N
LONG-104.50110°W
PDOP: 1.0
ELEV: 4606

㉑

REIN 1-8
SE1/4NE1/4
1997' FNL
648' FEL
LAT-40.34320°N
LONG-104.49187°W
PDOP: 2.0
ELEV: 4601

