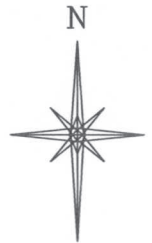
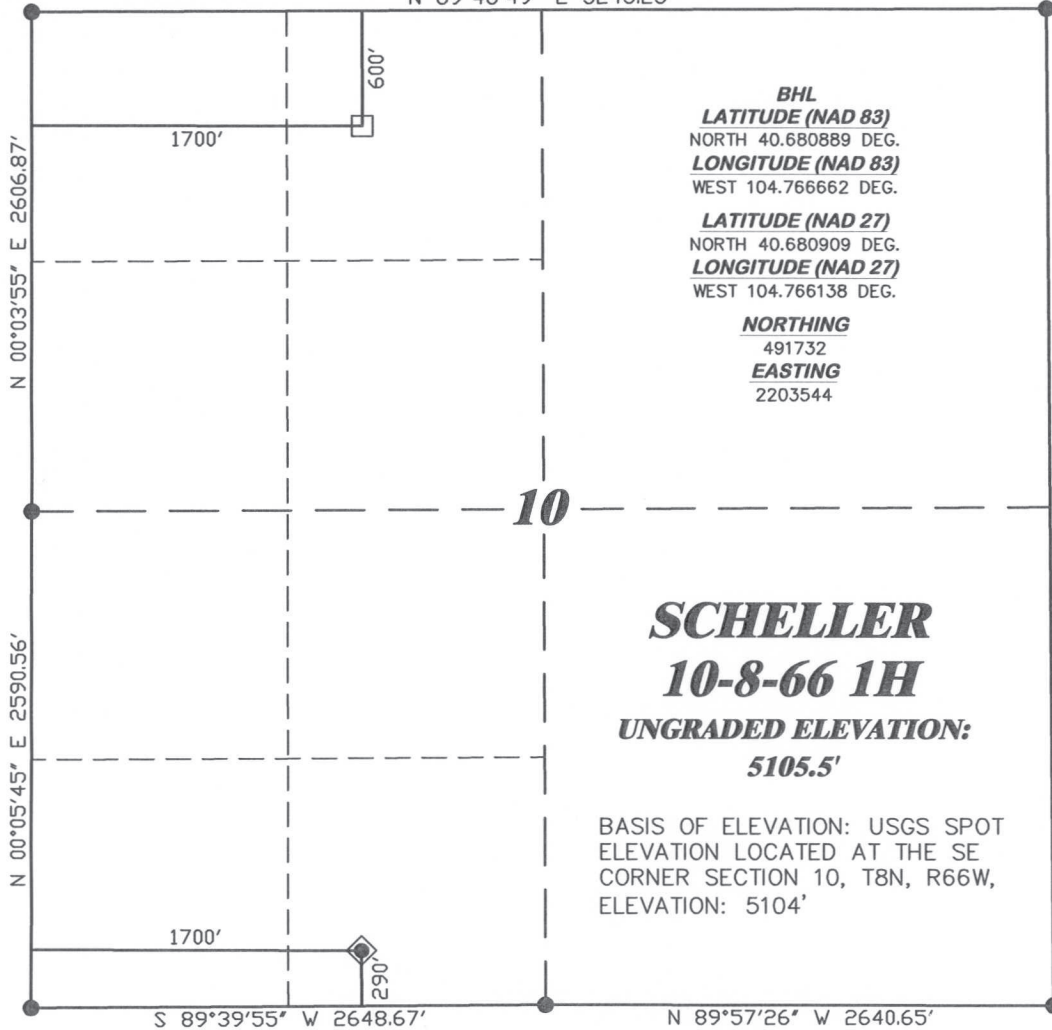


R. 66 W.

N 89°48'49" E 5243.23'



SCALE 1" = 1000'

T. 8 N.

LATITUDE (NAD 83)
NORTH 40.669079 DEG.
LONGITUDE (NAD 83)
WEST 104.766813 DEG.

LATITUDE (NAD 27)
NORTH 40.669098 DEG.
LONGITUDE (NAD 27)
WEST 104.766289 DEG.

NORTHING
487428.76
EASTING
2203538.16

BASIS OF BEARING/DATUM
SPCS CO NORTH NAD 27
BASED ON DRG TRIANGULATION
STATION "K262"

NOTES

PRAIRIE LANDS
EXISTING COUNTY ROAD WITHIN
400' RADIUS OF WELL SITE.

GPS OPERATOR PAUL ORME
OBSERVED A PDOP OF 1.9.
ALL GPS OBSERVATIONS ARE IN
COMPLIANCE WITH COGCC RULE No.215.

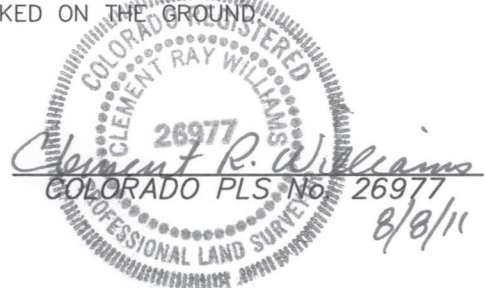


SURVEYOR'S STATEMENT

I, CLEMENT R. WILLIAMS, OF ROCK SPRINGS, WYOMING, HEREBY STATE: THIS MAP WAS MADE FROM NOTES TAKEN DURING AN ACTUAL FIELD SURVEY DONE UNDER MY DIRECT SUPERVISION ON AUGUST 2, 2011 AND THAT THIS PLAT CORRECTLY SHOWS THE LOCATION OF SCHELLER 10-8-66 1H AS STAKED ON THE GROUND.

LEGEND

- ◆ WELL LOCATION
- BOTTOM HOLE LOC. (APPROX)
- FOUND MONUMENT
- ▲ PREVIOUSLY FOUND MONUMENT



DRG RIFFIN & ASSOCIATES, INC.
(307) 362-5028 1414 ELK ST., ROCK SPRINGS, WY 82901

DRAWN: 8/5/11 - MMM

SCALE: 1" = 1000'

REVISED: NA

DRG JOB No. 18346

EXHIBIT 1

**PLAT OF DRILLING LOCATION
FOR
CHESAPEAKE ENERGY, LLC.**

**290' F/SL & 1700' F/WL, SESW, SECTION 10,
T. 8 N., R. 66 W., 6th P.M.
WELD COUNTY, COLORADO**