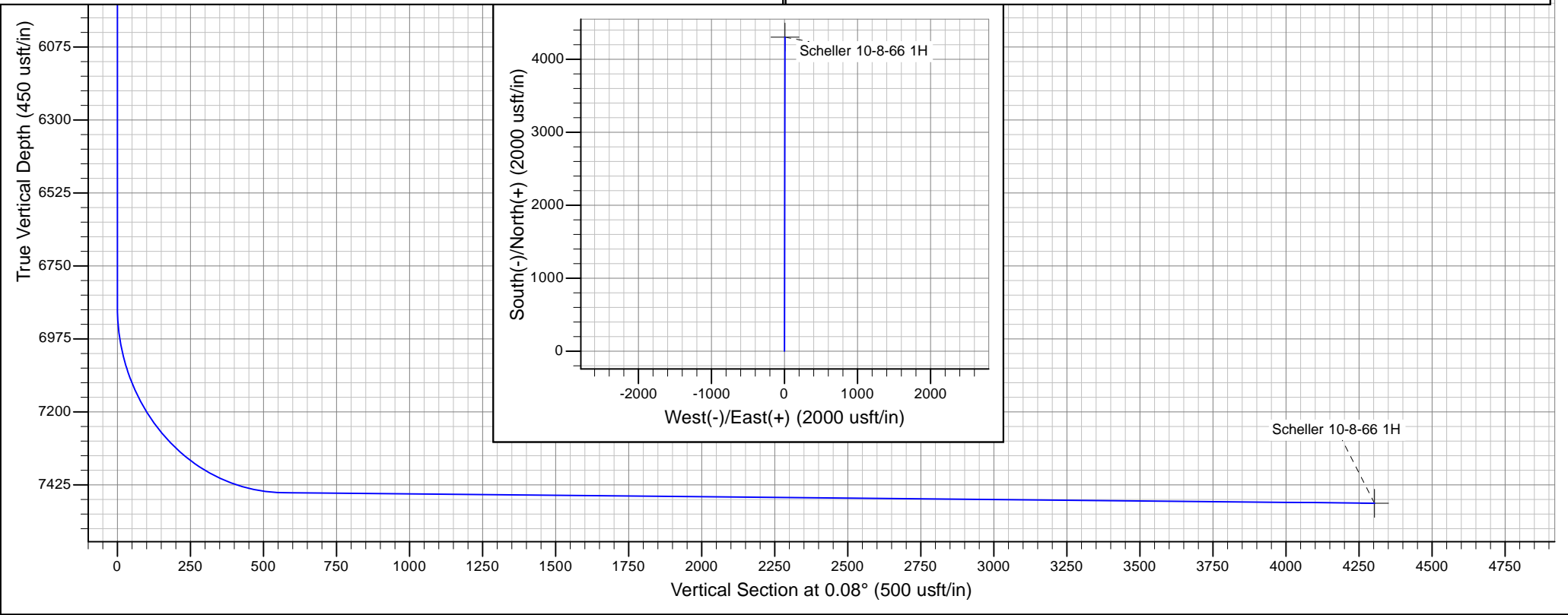


Project: Weld - DJ Basin
Site: Scheller 10-8-66 1H
Well: Scheller 10-8-66 1H
Wellbore: Scheller 10-8-66 1H
Design: Design #1

PROJECT DETAILS: Weld - DJ Basin

Geodetic System: US State Plane 1927 (Exact solution)
Datum: NAD 1927 (NADCON CONUS)
Ellipsoid: Clarke 1866
Zone: Colorado North 501

System Datum: Mean Sea Level



SECTION DETAILS

Sec	MD	Inc	Azi	TVD	+N/-S	+E/-W	Dleg	TFace	VSect	Target
1	0.0	0.00	0.00	0.0	0.0	0.0	0.00	0.00	0.0	
2	6876.0	0.00	0.00	6876.0	0.0	0.0	0.00	0.00	0.0	
3	7771.0	89.50	0.08	7448.9	568.0	0.8	10.00	0.08	568.0	
4	11506.4	89.50	0.08	7481.5	4303.2	5.8	0.00	0.00	4303.2	Scheller 10-8-66 1H

Chesapeake Energy -Rockies District

Weld - DJ Basin

Scheller 10-8-66 1H

Scheller 10-8-66 1H

Scheller 10-8-66 1H

Plan: Design #1

Standard Planning Report

07 October, 2011

Chesapeake Operating

Planning Report

Database:	Drilling Database	Local Co-ordinate Reference:	Well Scheller 10-8-66 1H
Company:	Chesapeake Energy -Rockies District	TVD Reference:	WELL @ 0.0usft (Original Well Elev)
Project:	Weld - DJ Basin	MD Reference:	WELL @ 0.0usft (Original Well Elev)
Site:	Scheller 10-8-66 1H	North Reference:	Grid
Well:	Scheller 10-8-66 1H	Survey Calculation Method:	Minimum Curvature
Wellbore:	Scheller 10-8-66 1H		
Design:	Design #1		

Project	Weld - DJ Basin		
Map System:	US State Plane 1927 (Exact solution)	System Datum:	Mean Sea Level
Geo Datum:	NAD 1927 (NADCON CONUS)		
Map Zone:	Colorado North 501		

Site		Scheller 10-8-66 1H			
Site Position:		Northing:	487,428.76 ft	Latitude:	40° 40' 8.74474250 N
From:	Map	Easting:	2,203,538.16 ft	Longitude:	104° 45' 58.69646804 W
Position Uncertainty:	0.0 usft	Slot Radius:	13.200 in	Grid Convergence:	0.47 °

Well	Scheller 10-8-66 1H					
Well Position	+N/-S	0.0 usft	Northing:	487,428.76 ft	Latitude:	40° 40' 8.74474250 N
	+E/-W	0.0 usft	Easting:	2,203,538.16 ft	Longitude:	104° 45' 58.69646804 W
Position Uncertainty		0.0 usft	Wellhead Elevation:		Ground Level:	0.0 usft

Wellbore	Scheller 10-8-66 1H				
Magnetics	Model Name	Sample Date	Declination (°)	Dip Angle (°)	Field Strength (nT)
	IGRF200510	10/7/2011	8.81	67.27	53,301

Design	Design #1			
Audit Notes:				
Version:	Phase:	PROTOTYPE	Tie On Depth:	0.0
Vertical Section:	Depth From (TVD) (usft)	+N/-S (usft)	+E/-W (usft)	Direction (°)
	0.0	0.0	0.0	0.08

Plan Sections										
Measured Depth (usft)	Inclination (°)	Azimuth (°)	Vertical Depth (usft)	+N/-S (usft)	+E/-W (usft)	Dogleg Rate (°/100usft)	Build Rate (°/100usft)	Turn Rate (°/100usft)	TFO (°)	Target
0.0	0.00	0.00	0.0	0.0	0.0	0.00	0.00	0.00	0.00	
6,876.0	0.00	0.00	6,876.0	0.0	0.0	0.00	0.00	0.00	0.00	
7,771.0	89.50	0.08	7,448.9	568.0	0.8	10.00	10.00	0.00	0.08	
11,506.4	89.50	0.08	7,481.5	4,303.2	5.8	0.00	0.00	0.00	0.00	Scheller 10-8-66 1H

Chesapeake Operating

Planning Report

Database:	Drilling Database	Local Co-ordinate Reference:	Well Scheller 10-8-66 1H
Company:	Chesapeake Energy -Rockies District	TVD Reference:	WELL @ 0.0usft (Original Well Elev)
Project:	Weld - DJ Basin	MD Reference:	WELL @ 0.0usft (Original Well Elev)
Site:	Scheller 10-8-66 1H	North Reference:	Grid
Well:	Scheller 10-8-66 1H	Survey Calculation Method:	Minimum Curvature
Wellbore:	Scheller 10-8-66 1H		
Design:	Design #1		

Planned Survey									
Measured Depth (usft)	Inclination (°)	Azimuth (°)	Vertical Depth (usft)	+N/-S (usft)	+E/-W (usft)	Vertical Section (usft)	Dogleg Rate (°/100usft)	Build Rate (°/100usft)	Turn Rate (°/100usft)
0.0	0.00	0.00	0.0	0.0	0.0	0.0	0.00	0.00	0.00
100.0	0.00	0.00	100.0	0.0	0.0	0.0	0.00	0.00	0.00
200.0	0.00	0.00	200.0	0.0	0.0	0.0	0.00	0.00	0.00
300.0	0.00	0.00	300.0	0.0	0.0	0.0	0.00	0.00	0.00
400.0	0.00	0.00	400.0	0.0	0.0	0.0	0.00	0.00	0.00
500.0	0.00	0.00	500.0	0.0	0.0	0.0	0.00	0.00	0.00
600.0	0.00	0.00	600.0	0.0	0.0	0.0	0.00	0.00	0.00
700.0	0.00	0.00	700.0	0.0	0.0	0.0	0.00	0.00	0.00
800.0	0.00	0.00	800.0	0.0	0.0	0.0	0.00	0.00	0.00
900.0	0.00	0.00	900.0	0.0	0.0	0.0	0.00	0.00	0.00
1,000.0	0.00	0.00	1,000.0	0.0	0.0	0.0	0.00	0.00	0.00
1,100.0	0.00	0.00	1,100.0	0.0	0.0	0.0	0.00	0.00	0.00
1,200.0	0.00	0.00	1,200.0	0.0	0.0	0.0	0.00	0.00	0.00
1,300.0	0.00	0.00	1,300.0	0.0	0.0	0.0	0.00	0.00	0.00
1,400.0	0.00	0.00	1,400.0	0.0	0.0	0.0	0.00	0.00	0.00
1,500.0	0.00	0.00	1,500.0	0.0	0.0	0.0	0.00	0.00	0.00
1,600.0	0.00	0.00	1,600.0	0.0	0.0	0.0	0.00	0.00	0.00
1,700.0	0.00	0.00	1,700.0	0.0	0.0	0.0	0.00	0.00	0.00
1,800.0	0.00	0.00	1,800.0	0.0	0.0	0.0	0.00	0.00	0.00
1,900.0	0.00	0.00	1,900.0	0.0	0.0	0.0	0.00	0.00	0.00
2,000.0	0.00	0.00	2,000.0	0.0	0.0	0.0	0.00	0.00	0.00
2,100.0	0.00	0.00	2,100.0	0.0	0.0	0.0	0.00	0.00	0.00
2,200.0	0.00	0.00	2,200.0	0.0	0.0	0.0	0.00	0.00	0.00
2,300.0	0.00	0.00	2,300.0	0.0	0.0	0.0	0.00	0.00	0.00
2,400.0	0.00	0.00	2,400.0	0.0	0.0	0.0	0.00	0.00	0.00
2,500.0	0.00	0.00	2,500.0	0.0	0.0	0.0	0.00	0.00	0.00
2,600.0	0.00	0.00	2,600.0	0.0	0.0	0.0	0.00	0.00	0.00
2,700.0	0.00	0.00	2,700.0	0.0	0.0	0.0	0.00	0.00	0.00
2,800.0	0.00	0.00	2,800.0	0.0	0.0	0.0	0.00	0.00	0.00
2,900.0	0.00	0.00	2,900.0	0.0	0.0	0.0	0.00	0.00	0.00
3,000.0	0.00	0.00	3,000.0	0.0	0.0	0.0	0.00	0.00	0.00
3,100.0	0.00	0.00	3,100.0	0.0	0.0	0.0	0.00	0.00	0.00
3,200.0	0.00	0.00	3,200.0	0.0	0.0	0.0	0.00	0.00	0.00
3,300.0	0.00	0.00	3,300.0	0.0	0.0	0.0	0.00	0.00	0.00
3,400.0	0.00	0.00	3,400.0	0.0	0.0	0.0	0.00	0.00	0.00
3,500.0	0.00	0.00	3,500.0	0.0	0.0	0.0	0.00	0.00	0.00
3,600.0	0.00	0.00	3,600.0	0.0	0.0	0.0	0.00	0.00	0.00
3,700.0	0.00	0.00	3,700.0	0.0	0.0	0.0	0.00	0.00	0.00
3,800.0	0.00	0.00	3,800.0	0.0	0.0	0.0	0.00	0.00	0.00
3,900.0	0.00	0.00	3,900.0	0.0	0.0	0.0	0.00	0.00	0.00
4,000.0	0.00	0.00	4,000.0	0.0	0.0	0.0	0.00	0.00	0.00
4,100.0	0.00	0.00	4,100.0	0.0	0.0	0.0	0.00	0.00	0.00
4,200.0	0.00	0.00	4,200.0	0.0	0.0	0.0	0.00	0.00	0.00
4,300.0	0.00	0.00	4,300.0	0.0	0.0	0.0	0.00	0.00	0.00
4,400.0	0.00	0.00	4,400.0	0.0	0.0	0.0	0.00	0.00	0.00
4,500.0	0.00	0.00	4,500.0	0.0	0.0	0.0	0.00	0.00	0.00
4,600.0	0.00	0.00	4,600.0	0.0	0.0	0.0	0.00	0.00	0.00
4,700.0	0.00	0.00	4,700.0	0.0	0.0	0.0	0.00	0.00	0.00
4,800.0	0.00	0.00	4,800.0	0.0	0.0	0.0	0.00	0.00	0.00
4,900.0	0.00	0.00	4,900.0	0.0	0.0	0.0	0.00	0.00	0.00
5,000.0	0.00	0.00	5,000.0	0.0	0.0	0.0	0.00	0.00	0.00
5,100.0	0.00	0.00	5,100.0	0.0	0.0	0.0	0.00	0.00	0.00
5,200.0	0.00	0.00	5,200.0	0.0	0.0	0.0	0.00	0.00	0.00
5,300.0	0.00	0.00	5,300.0	0.0	0.0	0.0	0.00	0.00	0.00

Chesapeake Operating

Planning Report

Database:	Drilling Database	Local Co-ordinate Reference:	Well Scheller 10-8-66 1H
Company:	Chesapeake Energy -Rockies District	TVD Reference:	WELL @ 0.0usft (Original Well Elev)
Project:	Weld - DJ Basin	MD Reference:	WELL @ 0.0usft (Original Well Elev)
Site:	Scheller 10-8-66 1H	North Reference:	Grid
Well:	Scheller 10-8-66 1H	Survey Calculation Method:	Minimum Curvature
Wellbore:	Scheller 10-8-66 1H		
Design:	Design #1		

Planned Survey									
Measured Depth (usft)	Inclination (°)	Azimuth (°)	Vertical Depth (usft)	+N/-S (usft)	+E/-W (usft)	Vertical Section (usft)	Dogleg Rate (°/100usft)	Build Rate (°/100usft)	Turn Rate (°/100usft)
5,400.0	0.00	0.00	5,400.0	0.0	0.0	0.0	0.00	0.00	0.00
5,500.0	0.00	0.00	5,500.0	0.0	0.0	0.0	0.00	0.00	0.00
5,600.0	0.00	0.00	5,600.0	0.0	0.0	0.0	0.00	0.00	0.00
5,700.0	0.00	0.00	5,700.0	0.0	0.0	0.0	0.00	0.00	0.00
5,800.0	0.00	0.00	5,800.0	0.0	0.0	0.0	0.00	0.00	0.00
5,900.0	0.00	0.00	5,900.0	0.0	0.0	0.0	0.00	0.00	0.00
6,000.0	0.00	0.00	6,000.0	0.0	0.0	0.0	0.00	0.00	0.00
6,100.0	0.00	0.00	6,100.0	0.0	0.0	0.0	0.00	0.00	0.00
6,200.0	0.00	0.00	6,200.0	0.0	0.0	0.0	0.00	0.00	0.00
6,300.0	0.00	0.00	6,300.0	0.0	0.0	0.0	0.00	0.00	0.00
6,400.0	0.00	0.00	6,400.0	0.0	0.0	0.0	0.00	0.00	0.00
6,500.0	0.00	0.00	6,500.0	0.0	0.0	0.0	0.00	0.00	0.00
6,600.0	0.00	0.00	6,600.0	0.0	0.0	0.0	0.00	0.00	0.00
6,700.0	0.00	0.00	6,700.0	0.0	0.0	0.0	0.00	0.00	0.00
6,800.0	0.00	0.00	6,800.0	0.0	0.0	0.0	0.00	0.00	0.00
6,876.0	0.00	0.00	6,876.0	0.0	0.0	0.0	0.00	0.00	0.00
6,900.0	2.40	0.08	6,900.0	0.5	0.0	0.5	10.00	10.00	0.00
6,950.0	7.40	0.08	6,949.8	4.8	0.0	4.8	10.00	10.00	0.00
7,000.0	12.40	0.08	6,999.0	13.4	0.0	13.4	10.00	10.00	0.00
7,050.0	17.40	0.08	7,047.3	26.2	0.0	26.2	10.00	10.00	0.00
7,100.0	22.40	0.08	7,094.3	43.2	0.1	43.2	10.00	10.00	0.00
7,150.0	27.40	0.08	7,139.7	64.3	0.1	64.3	10.00	10.00	0.00
7,200.0	32.40	0.08	7,183.0	89.2	0.1	89.2	10.00	10.00	0.00
7,250.0	37.40	0.08	7,224.0	117.8	0.2	117.8	10.00	10.00	0.00
7,300.0	42.40	0.08	7,262.3	149.9	0.2	149.9	10.00	10.00	0.00
7,350.0	47.40	0.08	7,297.7	185.2	0.3	185.2	10.00	10.00	0.00
7,400.0	52.40	0.08	7,329.9	223.4	0.3	223.4	10.00	10.00	0.00
7,450.0	57.40	0.08	7,358.7	264.3	0.4	264.3	10.00	10.00	0.00
7,500.0	62.40	0.08	7,383.7	307.5	0.4	307.5	10.00	10.00	0.00
7,550.0	67.40	0.08	7,404.9	352.8	0.5	352.8	10.00	10.00	0.00
7,600.0	72.40	0.08	7,422.1	399.7	0.5	399.7	10.00	10.00	0.00
7,650.0	77.40	0.08	7,435.1	448.0	0.6	448.0	10.00	10.00	0.00
7,700.0	82.40	0.08	7,443.9	497.2	0.7	497.2	10.00	10.00	0.00
7,750.0	87.40	0.08	7,448.3	547.0	0.7	547.0	10.00	10.00	0.00
7,771.0	89.50	0.08	7,448.9	568.0	0.8	568.0	10.00	10.00	0.00
7,800.0	89.50	0.08	7,449.2	597.0	0.8	597.0	0.00	0.00	0.00
7,900.0	89.50	0.08	7,450.0	697.0	0.9	697.0	0.00	0.00	0.00
8,000.0	89.50	0.08	7,450.9	797.0	1.1	797.0	0.00	0.00	0.00
8,100.0	89.50	0.08	7,451.8	897.0	1.2	897.0	0.00	0.00	0.00
8,200.0	89.50	0.08	7,452.6	997.0	1.4	997.0	0.00	0.00	0.00
8,300.0	89.50	0.08	7,453.5	1,097.0	1.5	1,097.0	0.00	0.00	0.00
8,400.0	89.50	0.08	7,454.4	1,197.0	1.6	1,197.0	0.00	0.00	0.00
8,500.0	89.50	0.08	7,455.3	1,297.0	1.8	1,297.0	0.00	0.00	0.00
8,600.0	89.50	0.08	7,456.1	1,397.0	1.9	1,397.0	0.00	0.00	0.00
8,700.0	89.50	0.08	7,457.0	1,497.0	2.0	1,497.0	0.00	0.00	0.00
8,800.0	89.50	0.08	7,457.9	1,597.0	2.2	1,597.0	0.00	0.00	0.00
8,900.0	89.50	0.08	7,458.8	1,696.9	2.3	1,696.9	0.00	0.00	0.00
9,000.0	89.50	0.08	7,459.6	1,796.9	2.4	1,796.9	0.00	0.00	0.00
9,100.0	89.50	0.08	7,460.5	1,896.9	2.6	1,896.9	0.00	0.00	0.00
9,200.0	89.50	0.08	7,461.4	1,996.9	2.7	1,996.9	0.00	0.00	0.00
9,300.0	89.50	0.08	7,462.2	2,096.9	2.8	2,096.9	0.00	0.00	0.00
9,400.0	89.50	0.08	7,463.1	2,196.9	3.0	2,196.9	0.00	0.00	0.00
9,500.0	89.50	0.08	7,464.0	2,296.9	3.1	2,296.9	0.00	0.00	0.00
9,600.0	89.50	0.08	7,464.9	2,396.9	3.3	2,396.9	0.00	0.00	0.00

Chesapeake Operating

Planning Report

Database:	Drilling Database	Local Co-ordinate Reference:	Well Scheller 10-8-66 1H
Company:	Chesapeake Energy -Rockies District	TVD Reference:	WELL @ 0.0usft (Original Well Elev)
Project:	Weld - DJ Basin	MD Reference:	WELL @ 0.0usft (Original Well Elev)
Site:	Scheller 10-8-66 1H	North Reference:	Grid
Well:	Scheller 10-8-66 1H	Survey Calculation Method:	Minimum Curvature
Wellbore:	Scheller 10-8-66 1H		
Design:	Design #1		

Planned Survey										
Measured Depth (usft)	Inclination (°)	Azimuth (°)	Vertical Depth (usft)	+N/-S (usft)	+E/-W (usft)	Vertical Section (usft)	Dogleg Rate (°/100usft)	Build Rate (°/100usft)	Turn Rate (°/100usft)	
9,700.0	89.50	0.08	7,465.7	2,496.9	3.4	2,496.9	0.00	0.00	0.00	
9,800.0	89.50	0.08	7,466.6	2,596.9	3.5	2,596.9	0.00	0.00	0.00	
9,900.0	89.50	0.08	7,467.5	2,696.9	3.7	2,696.9	0.00	0.00	0.00	
10,000.0	89.50	0.08	7,468.4	2,796.9	3.8	2,796.9	0.00	0.00	0.00	
10,100.0	89.50	0.08	7,469.2	2,896.9	3.9	2,896.9	0.00	0.00	0.00	
10,200.0	89.50	0.08	7,470.1	2,996.9	4.1	2,996.9	0.00	0.00	0.00	
10,300.0	89.50	0.08	7,471.0	3,096.9	4.2	3,096.9	0.00	0.00	0.00	
10,400.0	89.50	0.08	7,471.8	3,196.9	4.3	3,196.9	0.00	0.00	0.00	
10,500.0	89.50	0.08	7,472.7	3,296.9	4.5	3,296.9	0.00	0.00	0.00	
10,600.0	89.50	0.08	7,473.6	3,396.9	4.6	3,396.9	0.00	0.00	0.00	
10,700.0	89.50	0.08	7,474.5	3,496.9	4.7	3,496.9	0.00	0.00	0.00	
10,800.0	89.50	0.08	7,475.3	3,596.9	4.9	3,596.9	0.00	0.00	0.00	
10,900.0	89.50	0.08	7,476.2	3,696.9	5.0	3,696.9	0.00	0.00	0.00	
11,000.0	89.50	0.08	7,477.1	3,796.9	5.2	3,796.9	0.00	0.00	0.00	
11,100.0	89.50	0.08	7,478.0	3,896.9	5.3	3,896.9	0.00	0.00	0.00	
11,200.0	89.50	0.08	7,478.8	3,996.9	5.4	3,996.9	0.00	0.00	0.00	
11,300.0	89.50	0.08	7,479.7	4,096.9	5.6	4,096.9	0.00	0.00	0.00	
11,400.0	89.50	0.08	7,480.6	4,196.8	5.7	4,196.9	0.00	0.00	0.00	
11,506.4	89.50	0.08	7,481.5	4,303.2	5.8	4,303.2	0.00	0.00	0.00	

Design Targets									
Target Name	Dip Angle (°)	Dip Dir. (°)	TVD (usft)	+N/-S (usft)	+E/-W (usft)	Northing (ft)	Easting (ft)	Latitude	Longitude
- hit/miss target									
- Shape									
Scheller 10-8-66 1H	0.00	0.00	7,481.5	4,303.2	5.8	491,732.00	2,203,544.00	0° 40' 51.26520487 N	4° 45' 58.15854791 W
- plan hits target center									
- Point									