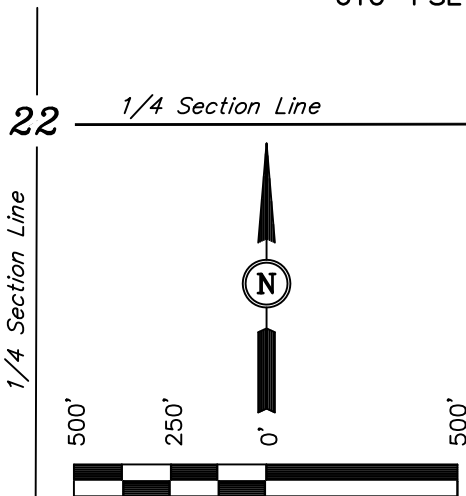
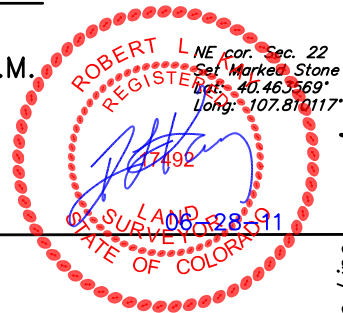


# QUICKSILVER RESOURCES, INC.

FIGURE #5

## LOCATION DRAWING FOR

K-DIAMOND RANCH #44-22  
SECTION 22, T6N, R93W, 6th. P.M.  
610' FSL 612' FEL



SCALE  
DATE: 06-13-11  
DRAWN BY: K.O.

1/16 Section Line

22

1/4 Section Line

1/16 Section Line

Section Line  
S00°05'39"W - 5268.99' (Meas.)

SE 1/4

FEATURE	
POWER LINE	NONE WITHIN 1 MILE RADIUS
BUILDING	NONE WITHIN 1 MILE RADIUS
WATER WELL	NONE WITHIN 1 MILE RADIUS

Proposed Access Road

WEST 3358'  
(To Property Line)

K-Diamond Ranch, LLC

Set Marked Stone  
Lat: 40.449075°  
Long: 107.819664°

Section Line

S89°43'46"W - 2649.40' (Meas.)

S38°E 5 Miles  
(To Railroad)

Set Marked Stone  
Lat: 40.449111°  
Long: 107.810150°

### PLANT COMMUNITY

- ☐ DISTURBED GRASSLAND
- ☐ NATIVE GRASSLAND
- ☐ SHRUB LAND
- ☐ PLAINS RIPARIAN
- ☐ MOUNTAIN RIPARIAN
- ☐ FOREST LAND
- ☐ WETLANDS AQUATIC
- ☐ ALPINE
- ☐ OTHER (Describe): \_\_\_\_\_

### CURRENT LAND USE

- CROP LAND: ☐ IRRIGATED ☐ DRY LAND ☐ IMPROVED PASTURE ☐ HAY MEADOW ☐ CRP
- NON-CROP LAND: ☐ RANGELAND ☐ TIMBER ☐ RECREATIONAL ☐ OTHER (Describe) \_\_\_\_\_
- SUBDIVIDED: ☐ INDUSTRIAL ☐ COMMERCIAL ☐ RESIDENTIAL \_\_\_\_\_

### FUTURE LAND USE

- CROP LAND: ☐ IRRIGATED ☐ DRY LAND ☐ IMPROVED PASTURE ☐ HAY MEADOW ☐ CRP
- NON-CROP LAND: ☐ RANGELAND ☐ TIMBER ☐ RECREATIONAL ☐ OTHER (Describe) \_\_\_\_\_
- SUBDIVIDED: ☐ INDUSTRIAL ☐ COMMERCIAL ☐ RESIDENTIAL \_\_\_\_\_

UINTAH ENGINEERING & LAND SURVEYING  
85 So. 200 East \* Vernal, Utah 84078 \* (435) 789-1017

# QUICKSILVER RESOURCES, INC.

ADDENDUM TO LEGAL PLAT FOR  
K-DIAMOND RANCH #44-22  
SECTION 22, T6N, R93W, 6th. P.M.  
610' FSL 612' FEL

SCALE: 1" = 200'  
DATE: 06-13-11  
DRAWN BY: K.O.

