

QUICKSILVER RESOURCES, INC.
K-DIAMOND RANCH #44-22
LOCATED IN MOFFAT COUNTY, COLORADO
SECTION 22, T6N, R93W, 6th P.M.

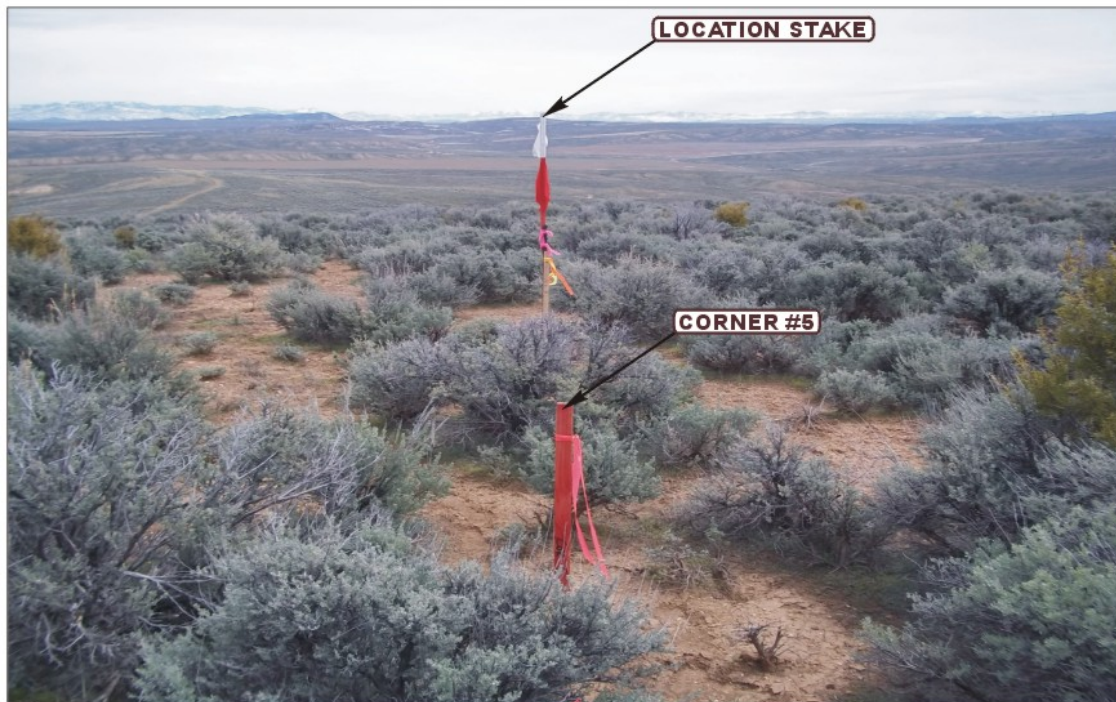


PHOTO: VIEW FROM CORNER #5 TO LOCATION STAKE

CAMERA ANGLE: NORTHEASTERLY



PHOTO: VIEW OF PROPOSED ACCESS

CAMERA ANGLE: EASTERLY



UELS Uintah Engineering & Land Surveying
85 South 200 East Vernal, Utah 84078
(435) 789-1017 * FAX (435) 789-1813

LOCATION PHOTOS

06 **10** **11**
MONTH DAY YEAR

TAKEN BY: M.A.

DRAWN BY: S.F.

REVISED: 00-00-00

PHOTO
P1

QUICKSILVER RESOURCES, INC.
K-DIAMOND RANCH #44-22
LOCATED IN MOFFAT COUNTY, COLORADO
SECTION 22, T6N, R93W, 6th P.M.



PHOTO: VIEW OF LOCATION STAKE

CAMERA ANGLE: NORTHERLY



PHOTO: VIEW OF LOCATION STAKE

CAMERA ANGLE: EASTERLY



- Since 1964 -

UELS

Uintah Engineering & Land Surveying
85 South 200 East Vernal, Utah 84078
(435) 789-1017 * FAX (435) 789-1813

LOCATION PHOTOS

06
MONTH

10
DAY

11
YEAR

PHOTO
P2

TAKEN BY: M.A.

DRAWN BY: S.F.

REVISED: 00-00-00

QUICKSILVER RESOURCES, INC.
K-DIAMOND RANCH #44-22
LOCATED IN MOFFAT COUNTY, COLORADO
SECTION 22, T6N, R93W, 6th P.M.



PHOTO: VIEW OF LOCATION STAKE

CAMERA ANGLE: SOUTHERLY



PHOTO: VIEW OF LOCATION STAKE

CAMERA ANGLE: WESTERLY



UELS

Uintah Engineering & Land Surveying
85 South 200 East Vernal, Utah 84078
(435) 789-1017 * FAX (435) 789-1813

LOCATION PHOTOS

06
MONTH

10
DAY

11
YEAR

PHOTO
P3

TAKEN BY: M.A.

DRAWN BY: S.F.

REVISED: 00-00-00