

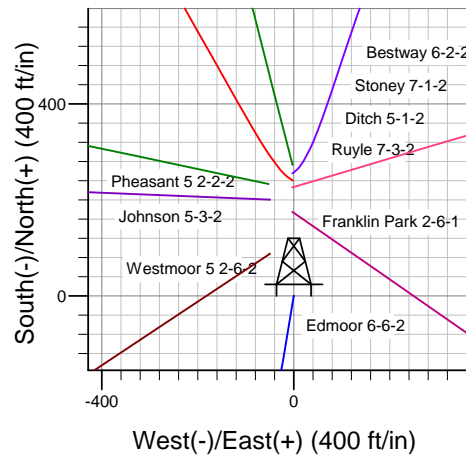
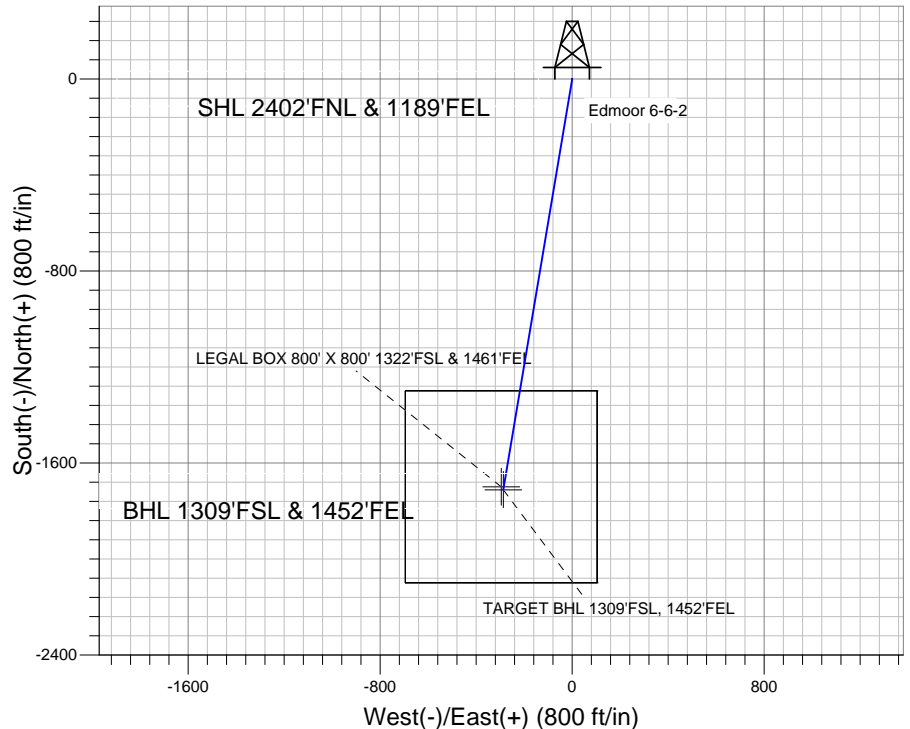
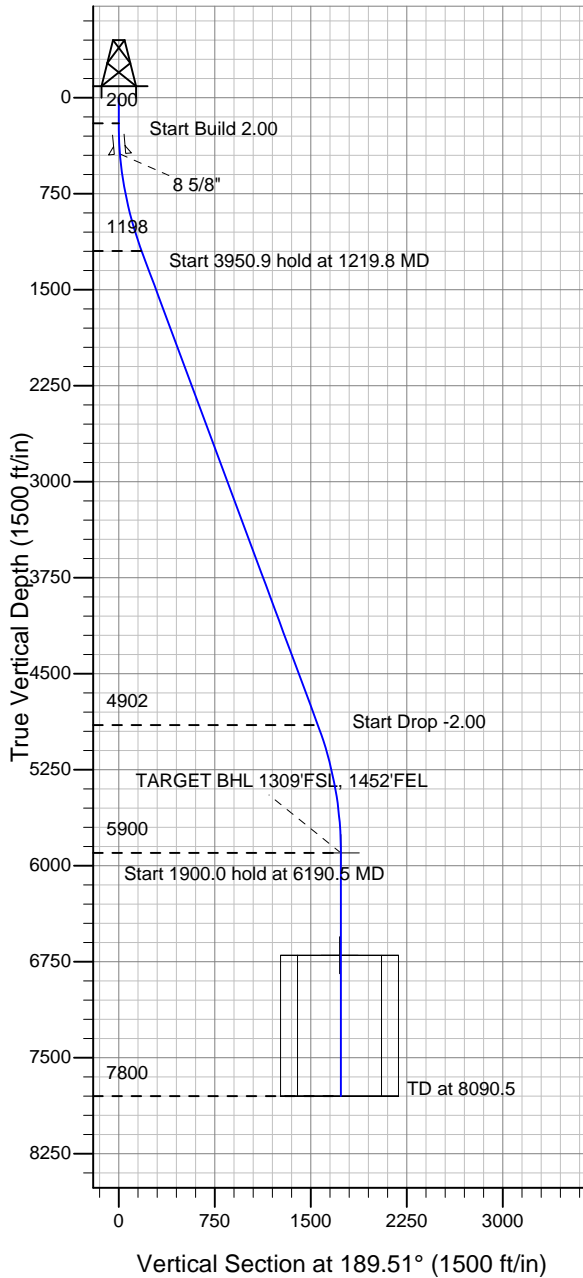
ENSIGN

Directional

Well Name: Edmoor 6-6-2

Surface Location: Bestway Pad Sec.2-T5N-R66W
 North American Datum 1983 US State Plane 1983 Colorado Northern Zone
 Ground Elevation: 4699.0
 +N/-S +E/-W Northing Easting Latitude Longitude Slot
 0.0 0.0 1400689.15 3211772.33 40.430800 -104.739270
 Original Well Elev WELL @ 4712.0ft (Original Well Elev)

Mineral Resources Inc



Bestway Pad Sec.2-T5N-R66W
 Edmoor 6-6-2
 Plan #1 (8-05-11)
 8:54, September 27 2011



Azimuths to True North
 Magnetic North: 8.82°
 Magnetic Field
 Strength: 53121.3snT
 Dip Angle: 67.07°
 Date: 9/27/2011
 Model: IGRF2010

WELLBORE TARGET DETAILS (LAT/LONG)

Name	TVD	+N/-S	+E/-W	Latitude	Longitude	Shape
TARGET BHL 1309'FSL, 1452'FEL	5900.0	-1712.3	-286.8	40.426100	-104.740300	Point
LEGAL BOX 800' X 800' 1322'FSL & 1461'FEL	6700.0	-1699.3	-295.8	40.426136	-104.740332	Rectangle (Sides: L800.0 W800.0)

SECTION DETAILS

Sec	MD	Inc	Azi	TVD	+N/-S	+E/-W	DLeg	TFace	VSec	Target
1	0.0	0.00	0.00	0.0	0.0	0.0	0.00	0.00	0.0	
2	200.0	0.00	0.00	200.0	0.0	0.0	0.00	0.00	0.0	
3	1219.8	20.40	189.51	1198.4	-177.1	-29.7	2.00	189.51	179.6	
4	5170.7	20.40	189.51	4901.6	-1535.1	-257.1	0.00	0.00	1556.5	
5	6190.5	0.00	0.00	5900.0	-1712.3	-286.8	2.00	180.00	1736.1	TARGET BHL 1309'FSL, 1452'FEL
6	8090.5	0.00	0.00	7800.0	-1712.3	-286.8	0.00	0.00	1736.1	



Directional

Mineral Resources Inc

SEC.2-T5N-R66W

Bestway Pad Sec.2-T5N-R66W

Edmoor 6-6-2

Wellbore #1

Plan: Plan #1 (8-05-11)

Standard Planning Report

27 September, 2011

Plan Sections										
Measured Depth (ft)	Inclination (°)	Azimuth (°)	Vertical Depth (ft)	+N/-S (ft)	+E/-W (ft)	Dogleg Rate (°/100ft)	Build Rate (°/100ft)	Turn Rate (°/100ft)	TFO (°)	Target
0.0	0.00	0.00	0.0	0.0	0.0	0.00	0.00	0.00	0.00	
200.0	0.00	0.00	200.0	0.0	0.0	0.00	0.00	0.00	0.00	
1,219.8	20.40	189.51	1,198.4	-177.1	-29.7	2.00	2.00	0.00	189.51	
5,170.7	20.40	189.51	4,901.6	-1,535.1	-257.1	0.00	0.00	0.00	0.00	
6,190.5	0.00	0.00	5,900.0	-1,712.3	-286.8	2.00	-2.00	0.00	180.00	TARGET BHL 1309
8,090.5	0.00	0.00	7,800.0	-1,712.3	-286.8	0.00	0.00	0.00	0.00	

Database:	Landmark	Local Co-ordinate Reference:	Well Edmoor 6-6-2
Company:	Mineral Resources Inc	TVD Reference:	WELL @ 4712.0ft (Original Well Elev)
Project:	SEC.2-T5N-R66W	MD Reference:	WELL @ 4712.0ft (Original Well Elev)
Site:	Bestway Pad Sec.2-T5N-R66W	North Reference:	True
Well:	Edmoor 6-6-2	Survey Calculation Method:	Minimum Curvature
Wellbore:	Wellbore #1		
Design:	Plan #1 (8-05-11)		

Planned Survey									
Measured Depth (ft)	Inclination (°)	Azimuth (°)	Vertical Depth (ft)	+N/-S (ft)	+E/-W (ft)	Vertical Section (ft)	Dogleg Rate (°/100ft)	Build Rate (°/100ft)	Turn Rate (°/100ft)
0.0	0.00	0.00	0.0	0.0	0.0	0.0	0.00	0.00	0.00
40.0	0.00	0.00	40.0	0.0	0.0	0.0	0.00	0.00	0.00
80.0	0.00	0.00	80.0	0.0	0.0	0.0	0.00	0.00	0.00
120.0	0.00	0.00	120.0	0.0	0.0	0.0	0.00	0.00	0.00
160.0	0.00	0.00	160.0	0.0	0.0	0.0	0.00	0.00	0.00
200.0	0.00	0.00	200.0	0.0	0.0	0.0	0.00	0.00	0.00
240.0	0.80	189.51	240.0	-0.3	0.0	0.3	2.00	2.00	0.00
280.0	1.60	189.51	280.0	-1.1	-0.2	1.1	2.00	2.00	0.00
320.0	2.40	189.51	320.0	-2.5	-0.4	2.5	2.00	2.00	0.00
360.0	3.20	189.51	359.9	-4.4	-0.7	4.5	2.00	2.00	0.00
400.0	4.00	189.51	399.8	-6.9	-1.2	7.0	2.00	2.00	0.00
440.0	4.80	189.51	439.7	-9.9	-1.7	10.0	2.00	2.00	0.00
440.3	4.81	189.51	440.0	-9.9	-1.7	10.1	2.00	2.00	0.00
8 5/8"									
480.0	5.60	189.51	479.6	-13.5	-2.3	13.7	2.00	2.00	0.00
520.0	6.40	189.51	519.3	-17.6	-2.9	17.9	2.00	2.00	0.00
560.0	7.20	189.51	559.1	-22.3	-3.7	22.6	2.00	2.00	0.00
600.0	8.00	189.51	598.7	-27.5	-4.6	27.9	2.00	2.00	0.00
640.0	8.80	189.51	638.3	-33.3	-5.6	33.7	2.00	2.00	0.00
680.0	9.60	189.51	677.8	-39.6	-6.6	40.1	2.00	2.00	0.00
720.0	10.40	189.51	717.1	-46.4	-7.8	47.1	2.00	2.00	0.00
760.0	11.20	189.51	756.4	-53.8	-9.0	54.6	2.00	2.00	0.00
800.0	12.00	189.51	795.6	-61.7	-10.3	62.6	2.00	2.00	0.00
840.0	12.80	189.51	834.7	-70.2	-11.8	71.2	2.00	2.00	0.00
880.0	13.60	189.51	873.6	-79.2	-13.3	80.3	2.00	2.00	0.00
920.0	14.40	189.51	912.4	-88.8	-14.9	90.0	2.00	2.00	0.00
960.0	15.20	189.51	951.1	-98.8	-16.6	100.2	2.00	2.00	0.00
1,000.0	16.00	189.51	989.6	-109.5	-18.3	111.0	2.00	2.00	0.00
1,040.0	16.80	189.51	1,028.0	-120.6	-20.2	122.3	2.00	2.00	0.00
1,080.0	17.60	189.51	1,066.2	-132.3	-22.2	134.1	2.00	2.00	0.00
1,120.0	18.40	189.51	1,104.3	-144.4	-24.2	146.5	2.00	2.00	0.00
1,160.0	19.20	189.51	1,142.1	-157.2	-26.3	159.3	2.00	2.00	0.00
1,200.0	20.00	189.51	1,179.8	-170.4	-28.5	172.8	2.00	2.00	0.00
1,219.8	20.40	189.51	1,198.4	-177.1	-29.7	179.6	2.00	2.00	0.00
1,240.0	20.40	189.51	1,217.3	-184.1	-30.8	186.6	0.00	0.00	0.00
1,280.0	20.40	189.51	1,254.8	-197.8	-33.1	200.6	0.00	0.00	0.00
1,320.0	20.40	189.51	1,292.3	-211.6	-35.4	214.5	0.00	0.00	0.00
1,360.0	20.40	189.51	1,329.8	-225.3	-37.7	228.5	0.00	0.00	0.00
1,400.0	20.40	189.51	1,367.3	-239.1	-40.0	242.4	0.00	0.00	0.00
1,440.0	20.40	189.51	1,404.8	-252.8	-42.3	256.3	0.00	0.00	0.00
1,480.0	20.40	189.51	1,442.3	-266.6	-44.6	270.3	0.00	0.00	0.00
1,520.0	20.40	189.51	1,479.8	-280.3	-46.9	284.2	0.00	0.00	0.00
1,560.0	20.40	189.51	1,517.3	-294.1	-49.3	298.2	0.00	0.00	0.00
1,600.0	20.40	189.51	1,554.8	-307.8	-51.6	312.1	0.00	0.00	0.00
1,640.0	20.40	189.51	1,592.3	-321.6	-53.9	326.0	0.00	0.00	0.00
1,680.0	20.40	189.51	1,629.7	-335.3	-56.2	340.0	0.00	0.00	0.00
1,720.0	20.40	189.51	1,667.2	-349.1	-58.5	353.9	0.00	0.00	0.00
1,760.0	20.40	189.51	1,704.7	-362.8	-60.8	367.9	0.00	0.00	0.00
1,800.0	20.40	189.51	1,742.2	-376.6	-63.1	381.8	0.00	0.00	0.00
1,840.0	20.40	189.51	1,779.7	-390.3	-65.4	395.7	0.00	0.00	0.00
1,880.0	20.40	189.51	1,817.2	-404.1	-67.7	409.7	0.00	0.00	0.00
1,920.0	20.40	189.51	1,854.7	-417.8	-70.0	423.6	0.00	0.00	0.00
1,960.0	20.40	189.51	1,892.2	-431.6	-72.3	437.6	0.00	0.00	0.00
2,000.0	20.40	189.51	1,929.7	-445.3	-74.6	451.5	0.00	0.00	0.00

Database:	Landmark	Local Co-ordinate Reference:	Well Edmoor 6-6-2
Company:	Mineral Resources Inc	TVD Reference:	WELL @ 4712.0ft (Original Well Elev)
Project:	SEC.2-T5N-R66W	MD Reference:	WELL @ 4712.0ft (Original Well Elev)
Site:	Bestway Pad Sec.2-T5N-R66W	North Reference:	True
Well:	Edmoor 6-6-2	Survey Calculation Method:	Minimum Curvature
Wellbore:	Wellbore #1		
Design:	Plan #1 (8-05-11)		

Planned Survey									
Measured Depth (ft)	Inclination (°)	Azimuth (°)	Vertical Depth (ft)	+N/-S (ft)	+E/-W (ft)	Vertical Section (ft)	Dogleg Rate (°/100ft)	Build Rate (°/100ft)	Turn Rate (°/100ft)
2,040.0	20.40	189.51	1,967.2	-459.1	-76.9	465.4	0.00	0.00	0.00
2,080.0	20.40	189.51	2,004.7	-472.8	-79.2	479.4	0.00	0.00	0.00
2,120.0	20.40	189.51	2,042.2	-486.6	-81.5	493.3	0.00	0.00	0.00
2,160.0	20.40	189.51	2,079.7	-500.3	-83.8	507.3	0.00	0.00	0.00
2,200.0	20.40	189.51	2,117.1	-514.0	-86.1	521.2	0.00	0.00	0.00
2,240.0	20.40	189.51	2,154.6	-527.8	-88.4	535.1	0.00	0.00	0.00
2,280.0	20.40	189.51	2,192.1	-541.5	-90.7	549.1	0.00	0.00	0.00
2,320.0	20.40	189.51	2,229.6	-555.3	-93.0	563.0	0.00	0.00	0.00
2,360.0	20.40	189.51	2,267.1	-569.0	-95.3	577.0	0.00	0.00	0.00
2,400.0	20.40	189.51	2,304.6	-582.8	-97.6	590.9	0.00	0.00	0.00
2,440.0	20.40	189.51	2,342.1	-596.5	-99.9	604.8	0.00	0.00	0.00
2,480.0	20.40	189.51	2,379.6	-610.3	-102.2	618.8	0.00	0.00	0.00
2,520.0	20.40	189.51	2,417.1	-624.0	-104.5	632.7	0.00	0.00	0.00
2,560.0	20.40	189.51	2,454.6	-637.8	-106.8	646.7	0.00	0.00	0.00
2,600.0	20.40	189.51	2,492.1	-651.5	-109.1	660.6	0.00	0.00	0.00
2,640.0	20.40	189.51	2,529.6	-665.3	-111.4	674.5	0.00	0.00	0.00
2,680.0	20.40	189.51	2,567.1	-679.0	-113.7	688.5	0.00	0.00	0.00
2,720.0	20.40	189.51	2,604.5	-692.8	-116.0	702.4	0.00	0.00	0.00
2,760.0	20.40	189.51	2,642.0	-706.5	-118.3	716.4	0.00	0.00	0.00
2,800.0	20.40	189.51	2,679.5	-720.3	-120.6	730.3	0.00	0.00	0.00
2,840.0	20.40	189.51	2,717.0	-734.0	-122.9	744.2	0.00	0.00	0.00
2,880.0	20.40	189.51	2,754.5	-747.8	-125.2	758.2	0.00	0.00	0.00
2,920.0	20.40	189.51	2,792.0	-761.5	-127.5	772.1	0.00	0.00	0.00
2,960.0	20.40	189.51	2,829.5	-775.3	-129.8	786.1	0.00	0.00	0.00
3,000.0	20.40	189.51	2,867.0	-789.0	-132.1	800.0	0.00	0.00	0.00
3,040.0	20.40	189.51	2,904.5	-802.8	-134.4	813.9	0.00	0.00	0.00
3,080.0	20.40	189.51	2,942.0	-816.5	-136.7	827.9	0.00	0.00	0.00
3,120.0	20.40	189.51	2,979.5	-830.3	-139.1	841.8	0.00	0.00	0.00
3,160.0	20.40	189.51	3,017.0	-844.0	-141.4	855.8	0.00	0.00	0.00
3,200.0	20.40	189.51	3,054.5	-857.8	-143.7	869.7	0.00	0.00	0.00
3,240.0	20.40	189.51	3,091.9	-871.5	-146.0	883.7	0.00	0.00	0.00
3,280.0	20.40	189.51	3,129.4	-885.3	-148.3	897.6	0.00	0.00	0.00
3,320.0	20.40	189.51	3,166.9	-899.0	-150.6	911.5	0.00	0.00	0.00
3,360.0	20.40	189.51	3,204.4	-912.8	-152.9	925.5	0.00	0.00	0.00
3,400.0	20.40	189.51	3,241.9	-926.5	-155.2	939.4	0.00	0.00	0.00
3,440.0	20.40	189.51	3,279.4	-940.3	-157.5	953.4	0.00	0.00	0.00
3,480.0	20.40	189.51	3,316.9	-954.0	-159.8	967.3	0.00	0.00	0.00
3,520.0	20.40	189.51	3,354.4	-967.8	-162.1	981.2	0.00	0.00	0.00
3,560.0	20.40	189.51	3,391.9	-981.5	-164.4	995.2	0.00	0.00	0.00
3,600.0	20.40	189.51	3,429.4	-995.3	-166.7	1,009.1	0.00	0.00	0.00
3,640.0	20.40	189.51	3,466.9	-1,009.0	-169.0	1,023.1	0.00	0.00	0.00
3,680.0	20.40	189.51	3,504.4	-1,022.7	-171.3	1,037.0	0.00	0.00	0.00
3,720.0	20.40	189.51	3,541.9	-1,036.5	-173.6	1,050.9	0.00	0.00	0.00
3,760.0	20.40	189.51	3,579.3	-1,050.2	-175.9	1,064.9	0.00	0.00	0.00
3,800.0	20.40	189.51	3,616.8	-1,064.0	-178.2	1,078.8	0.00	0.00	0.00
3,840.0	20.40	189.51	3,654.3	-1,077.7	-180.5	1,092.8	0.00	0.00	0.00
3,880.0	20.40	189.51	3,691.8	-1,091.5	-182.8	1,106.7	0.00	0.00	0.00
3,920.0	20.40	189.51	3,729.3	-1,105.2	-185.1	1,120.6	0.00	0.00	0.00
3,960.0	20.40	189.51	3,766.8	-1,119.0	-187.4	1,134.6	0.00	0.00	0.00
4,000.0	20.40	189.51	3,804.3	-1,132.7	-189.7	1,148.5	0.00	0.00	0.00
4,040.0	20.40	189.51	3,841.8	-1,146.5	-192.0	1,162.5	0.00	0.00	0.00
4,080.0	20.40	189.51	3,879.3	-1,160.2	-194.3	1,176.4	0.00	0.00	0.00
4,120.0	20.40	189.51	3,916.8	-1,174.0	-196.6	1,190.3	0.00	0.00	0.00
4,160.0	20.40	189.51	3,954.3	-1,187.7	-198.9	1,204.3	0.00	0.00	0.00

Database:	Landmark	Local Co-ordinate Reference:	Well Edmoor 6-6-2
Company:	Mineral Resources Inc	TVD Reference:	WELL @ 4712.0ft (Original Well Elev)
Project:	SEC.2-T5N-R66W	MD Reference:	WELL @ 4712.0ft (Original Well Elev)
Site:	Bestway Pad Sec.2-T5N-R66W	North Reference:	True
Well:	Edmoor 6-6-2	Survey Calculation Method:	Minimum Curvature
Wellbore:	Wellbore #1		
Design:	Plan #1 (8-05-11)		

Planned Survey									
Measured Depth (ft)	Inclination (°)	Azimuth (°)	Vertical Depth (ft)	+N/-S (ft)	+E/-W (ft)	Vertical Section (ft)	Dogleg Rate (°/100ft)	Build Rate (°/100ft)	Turn Rate (°/100ft)
4,200.0	20.40	189.51	3,991.8	-1,201.5	-201.2	1,218.2	0.00	0.00	0.00
4,240.0	20.40	189.51	4,029.3	-1,215.2	-203.5	1,232.2	0.00	0.00	0.00
4,280.0	20.40	189.51	4,066.7	-1,229.0	-205.8	1,246.1	0.00	0.00	0.00
4,320.0	20.40	189.51	4,104.2	-1,242.7	-208.1	1,260.0	0.00	0.00	0.00
4,360.0	20.40	189.51	4,141.7	-1,256.5	-210.4	1,274.0	0.00	0.00	0.00
4,400.0	20.40	189.51	4,179.2	-1,270.2	-212.7	1,287.9	0.00	0.00	0.00
4,440.0	20.40	189.51	4,216.7	-1,284.0	-215.0	1,301.9	0.00	0.00	0.00
4,480.0	20.40	189.51	4,254.2	-1,297.7	-217.3	1,315.8	0.00	0.00	0.00
4,520.0	20.40	189.51	4,291.7	-1,311.5	-219.6	1,329.7	0.00	0.00	0.00
4,560.0	20.40	189.51	4,329.2	-1,325.2	-221.9	1,343.7	0.00	0.00	0.00
4,600.0	20.40	189.51	4,366.7	-1,339.0	-224.2	1,357.6	0.00	0.00	0.00
4,640.0	20.40	189.51	4,404.2	-1,352.7	-226.6	1,371.6	0.00	0.00	0.00
4,680.0	20.40	189.51	4,441.7	-1,366.5	-228.9	1,385.5	0.00	0.00	0.00
4,720.0	20.40	189.51	4,479.2	-1,380.2	-231.2	1,399.4	0.00	0.00	0.00
4,760.0	20.40	189.51	4,516.7	-1,394.0	-233.5	1,413.4	0.00	0.00	0.00
4,800.0	20.40	189.51	4,554.1	-1,407.7	-235.8	1,427.3	0.00	0.00	0.00
4,840.0	20.40	189.51	4,591.6	-1,421.5	-238.1	1,441.3	0.00	0.00	0.00
4,880.0	20.40	189.51	4,629.1	-1,435.2	-240.4	1,455.2	0.00	0.00	0.00
4,920.0	20.40	189.51	4,666.6	-1,449.0	-242.7	1,469.1	0.00	0.00	0.00
4,960.0	20.40	189.51	4,704.1	-1,462.7	-245.0	1,483.1	0.00	0.00	0.00
5,000.0	20.40	189.51	4,741.6	-1,476.5	-247.3	1,497.0	0.00	0.00	0.00
5,040.0	20.40	189.51	4,779.1	-1,490.2	-249.6	1,511.0	0.00	0.00	0.00
5,080.0	20.40	189.51	4,816.6	-1,504.0	-251.9	1,524.9	0.00	0.00	0.00
5,120.0	20.40	189.51	4,854.1	-1,517.7	-254.2	1,538.8	0.00	0.00	0.00
5,160.0	20.40	189.51	4,891.6	-1,531.4	-256.5	1,552.8	0.00	0.00	0.00
5,170.7	20.40	189.51	4,901.6	-1,535.1	-257.1	1,556.5	0.00	0.00	0.00
5,200.0	19.81	189.51	4,929.1	-1,545.1	-258.8	1,566.6	2.00	-2.00	0.00
5,240.0	19.01	189.51	4,966.8	-1,558.2	-261.0	1,579.9	2.00	-2.00	0.00
5,280.0	18.21	189.51	5,004.8	-1,570.8	-263.1	1,592.6	2.00	-2.00	0.00
5,320.0	17.41	189.51	5,042.8	-1,582.8	-265.1	1,604.9	2.00	-2.00	0.00
5,360.0	16.61	189.51	5,081.1	-1,594.4	-267.0	1,616.6	2.00	-2.00	0.00
5,400.0	15.81	189.51	5,119.5	-1,605.4	-268.9	1,627.7	2.00	-2.00	0.00
5,440.0	15.01	189.51	5,158.1	-1,615.9	-270.6	1,638.4	2.00	-2.00	0.00
5,480.0	14.21	189.51	5,196.8	-1,625.8	-272.3	1,648.5	2.00	-2.00	0.00
5,520.0	13.41	189.51	5,235.6	-1,635.2	-273.9	1,658.0	2.00	-2.00	0.00
5,560.0	12.61	189.51	5,274.6	-1,644.1	-275.4	1,667.0	2.00	-2.00	0.00
5,600.0	11.81	189.51	5,313.7	-1,652.5	-276.8	1,675.5	2.00	-2.00	0.00
5,640.0	11.01	189.51	5,352.9	-1,660.3	-278.1	1,683.4	2.00	-2.00	0.00
5,680.0	10.21	189.51	5,392.2	-1,667.5	-279.3	1,690.7	2.00	-2.00	0.00
5,720.0	9.41	189.51	5,431.6	-1,674.2	-280.4	1,697.6	2.00	-2.00	0.00
5,760.0	8.61	189.51	5,471.1	-1,680.4	-281.4	1,703.8	2.00	-2.00	0.00
5,800.0	7.81	189.51	5,510.7	-1,686.1	-282.4	1,709.5	2.00	-2.00	0.00
5,840.0	7.01	189.51	5,550.4	-1,691.1	-283.2	1,714.7	2.00	-2.00	0.00
5,880.0	6.21	189.51	5,590.1	-1,695.7	-284.0	1,719.3	2.00	-2.00	0.00
5,920.0	5.41	189.51	5,629.9	-1,699.7	-284.7	1,723.3	2.00	-2.00	0.00
5,960.0	4.61	189.51	5,669.8	-1,703.1	-285.2	1,726.8	2.00	-2.00	0.00
6,000.0	3.81	189.51	5,709.6	-1,706.0	-285.7	1,729.8	2.00	-2.00	0.00
6,040.0	3.01	189.51	5,749.6	-1,708.4	-286.1	1,732.2	2.00	-2.00	0.00
6,080.0	2.21	189.51	5,789.5	-1,710.2	-286.4	1,734.0	2.00	-2.00	0.00
6,120.0	1.41	189.51	5,829.5	-1,711.4	-286.6	1,735.2	2.00	-2.00	0.00
6,160.0	0.61	189.51	5,869.5	-1,712.1	-286.7	1,735.9	2.00	-2.00	0.00
6,190.5	0.00	0.00	5,900.0	-1,712.3	-286.8	1,736.1	2.00	-2.00	0.00
TARGET BHL 1309'FSL, 1452'FEL									
6,200.0	0.00	0.00	5,909.5	-1,712.3	-286.8	1,736.1	0.00	0.00	0.00

Database:	Landmark	Local Co-ordinate Reference:	Well Edmoor 6-6-2
Company:	Mineral Resources Inc	TVD Reference:	WELL @ 4712.0ft (Original Well Elev)
Project:	SEC.2-T5N-R66W	MD Reference:	WELL @ 4712.0ft (Original Well Elev)
Site:	Bestway Pad Sec.2-T5N-R66W	North Reference:	True
Well:	Edmoor 6-6-2	Survey Calculation Method:	Minimum Curvature
Wellbore:	Wellbore #1		
Design:	Plan #1 (8-05-11)		

Planned Survey									
Measured Depth (ft)	Inclination (°)	Azimuth (°)	Vertical Depth (ft)	+N/-S (ft)	+E/-W (ft)	Vertical Section (ft)	Dogleg Rate (°/100ft)	Build Rate (°/100ft)	Turn Rate (°/100ft)
6,240.0	0.00	0.00	5,949.5	-1,712.3	-286.8	1,736.1	0.00	0.00	0.00
6,280.0	0.00	0.00	5,989.5	-1,712.3	-286.8	1,736.1	0.00	0.00	0.00
6,320.0	0.00	0.00	6,029.5	-1,712.3	-286.8	1,736.1	0.00	0.00	0.00
6,360.0	0.00	0.00	6,069.5	-1,712.3	-286.8	1,736.1	0.00	0.00	0.00
6,400.0	0.00	0.00	6,109.5	-1,712.3	-286.8	1,736.1	0.00	0.00	0.00
6,440.0	0.00	0.00	6,149.5	-1,712.3	-286.8	1,736.1	0.00	0.00	0.00
6,480.0	0.00	0.00	6,189.5	-1,712.3	-286.8	1,736.1	0.00	0.00	0.00
6,520.0	0.00	0.00	6,229.5	-1,712.3	-286.8	1,736.1	0.00	0.00	0.00
6,560.0	0.00	0.00	6,269.5	-1,712.3	-286.8	1,736.1	0.00	0.00	0.00
6,600.0	0.00	0.00	6,309.5	-1,712.3	-286.8	1,736.1	0.00	0.00	0.00
6,640.0	0.00	0.00	6,349.5	-1,712.3	-286.8	1,736.1	0.00	0.00	0.00
6,680.0	0.00	0.00	6,389.5	-1,712.3	-286.8	1,736.1	0.00	0.00	0.00
6,720.0	0.00	0.00	6,429.5	-1,712.3	-286.8	1,736.1	0.00	0.00	0.00
6,760.0	0.00	0.00	6,469.5	-1,712.3	-286.8	1,736.1	0.00	0.00	0.00
6,800.0	0.00	0.00	6,509.5	-1,712.3	-286.8	1,736.1	0.00	0.00	0.00
6,840.0	0.00	0.00	6,549.5	-1,712.3	-286.8	1,736.1	0.00	0.00	0.00
6,880.0	0.00	0.00	6,589.5	-1,712.3	-286.8	1,736.1	0.00	0.00	0.00
6,920.0	0.00	0.00	6,629.5	-1,712.3	-286.8	1,736.1	0.00	0.00	0.00
6,960.0	0.00	0.00	6,669.5	-1,712.3	-286.8	1,736.1	0.00	0.00	0.00
6,990.5	0.00	0.00	6,700.0	-1,712.3	-286.8	1,736.1	0.00	0.00	0.00
LEGAL BOX 800' X 800' 1322'FSL & 1461'FEL									
7,000.0	0.00	0.00	6,709.5	-1,712.3	-286.8	1,736.1	0.00	0.00	0.00
7,040.0	0.00	0.00	6,749.5	-1,712.3	-286.8	1,736.1	0.00	0.00	0.00
7,080.0	0.00	0.00	6,789.5	-1,712.3	-286.8	1,736.1	0.00	0.00	0.00
7,120.0	0.00	0.00	6,829.5	-1,712.3	-286.8	1,736.1	0.00	0.00	0.00
7,160.0	0.00	0.00	6,869.5	-1,712.3	-286.8	1,736.1	0.00	0.00	0.00
7,200.0	0.00	0.00	6,909.5	-1,712.3	-286.8	1,736.1	0.00	0.00	0.00
7,240.0	0.00	0.00	6,949.5	-1,712.3	-286.8	1,736.1	0.00	0.00	0.00
7,280.0	0.00	0.00	6,989.5	-1,712.3	-286.8	1,736.1	0.00	0.00	0.00
7,320.0	0.00	0.00	7,029.5	-1,712.3	-286.8	1,736.1	0.00	0.00	0.00
7,360.0	0.00	0.00	7,069.5	-1,712.3	-286.8	1,736.1	0.00	0.00	0.00
7,400.0	0.00	0.00	7,109.5	-1,712.3	-286.8	1,736.1	0.00	0.00	0.00
7,440.0	0.00	0.00	7,149.5	-1,712.3	-286.8	1,736.1	0.00	0.00	0.00
7,480.0	0.00	0.00	7,189.5	-1,712.3	-286.8	1,736.1	0.00	0.00	0.00
7,520.0	0.00	0.00	7,229.5	-1,712.3	-286.8	1,736.1	0.00	0.00	0.00
7,560.0	0.00	0.00	7,269.5	-1,712.3	-286.8	1,736.1	0.00	0.00	0.00
7,600.0	0.00	0.00	7,309.5	-1,712.3	-286.8	1,736.1	0.00	0.00	0.00
7,640.0	0.00	0.00	7,349.5	-1,712.3	-286.8	1,736.1	0.00	0.00	0.00
7,680.0	0.00	0.00	7,389.5	-1,712.3	-286.8	1,736.1	0.00	0.00	0.00
7,720.0	0.00	0.00	7,429.5	-1,712.3	-286.8	1,736.1	0.00	0.00	0.00
7,760.0	0.00	0.00	7,469.5	-1,712.3	-286.8	1,736.1	0.00	0.00	0.00
7,800.0	0.00	0.00	7,509.5	-1,712.3	-286.8	1,736.1	0.00	0.00	0.00
7,840.0	0.00	0.00	7,549.5	-1,712.3	-286.8	1,736.1	0.00	0.00	0.00
7,880.0	0.00	0.00	7,589.5	-1,712.3	-286.8	1,736.1	0.00	0.00	0.00
7,920.0	0.00	0.00	7,629.5	-1,712.3	-286.8	1,736.1	0.00	0.00	0.00
7,960.0	0.00	0.00	7,669.5	-1,712.3	-286.8	1,736.1	0.00	0.00	0.00
8,000.0	0.00	0.00	7,709.5	-1,712.3	-286.8	1,736.1	0.00	0.00	0.00
8,040.0	0.00	0.00	7,749.5	-1,712.3	-286.8	1,736.1	0.00	0.00	0.00
8,080.0	0.00	0.00	7,789.5	-1,712.3	-286.8	1,736.1	0.00	0.00	0.00
8,090.5	0.00	0.00	7,800.0	-1,712.3	-286.8	1,736.1	0.00	0.00	0.00

Database:	Landmark	Local Co-ordinate Reference:	Well Edmoor 6-6-2
Company:	Mineral Resources Inc	TVD Reference:	WELL @ 4712.0ft (Original Well Elev)
Project:	SEC.2-T5N-R66W	MD Reference:	WELL @ 4712.0ft (Original Well Elev)
Site:	Bestway Pad Sec.2-T5N-R66W	North Reference:	True
Well:	Edmoor 6-6-2	Survey Calculation Method:	Minimum Curvature
Wellbore:	Wellbore #1		
Design:	Plan #1 (8-05-11)		

Targets									
Target Name									
- hit/miss target	Dip Angle	Dip Dir.	TVD	+N/-S	+E/-W	Northing	Easting	Latitude	Longitude
- Shape	(°)	(°)	(ft)	(ft)	(ft)	(ft)	(ft)		
LEGAL BOX 800' X 800'	0.00	0.00	6,700.0	-1,699.3	-295.8	1,398,987.45	3,211,491.13	40.426136	-104.740332
- plan misses target center by 15.8ft at 6990.5ft MD (6700.0 TVD, -1712.3 N, -286.8 E)									
- Rectangle (sides W800.0 H800.0 D1,100.0)									
TARGET BHL 1309'F	0.00	0.00	5,900.0	-1,712.3	-286.8	1,398,974.56	3,211,500.27	40.426100	-104.740300
- plan hits target center									
- Point									

Casing Points					
Measured Depth (ft)	Vertical Depth (ft)	Name	Casing Diameter (")	Hole Diameter (")	
440.3	440.0	8 5/8"	8-5/8	12-1/4	



Directional

Mineral Resources Inc

SEC.2-T5N-R66W

Bestway Pad Sec.2-T5N-R66W

Edmoor 6-6-2

Wellbore #1

Plan #1 (8-05-11)

Anticollision Report

27 September, 2011

Company:	Mineral Resources Inc	Local Co-ordinate Reference:	Well Edmoor 6-6-2
Project:	SEC.2-T5N-R66W	TVD Reference:	WELL @ 4712.0ft (Original Well Elev)
Reference Site:	Bestway Pad Sec.2-T5N-R66W	MD Reference:	WELL @ 4712.0ft (Original Well Elev)
Site Error:	0.0ft	North Reference:	True
Reference Well:	Edmoor 6-6-2	Survey Calculation Method:	Minimum Curvature
Well Error:	0.0ft	Output errors are at	2.00 sigma
Reference Wellbore	Wellbore #1	Database:	Landmark
Reference Design:	Plan #1 (8-05-11)	Offset TVD Reference:	Offset Datum

Offset Design												Offset Site Error:	0.0ft
Survey Program: 0-MWD												Offset Well Error:	0.0ft
Reference		Offset		Semi Major Axis			Distance						Warning
Measured Depth (ft)	Vertical Depth (ft)	Measured Depth (ft)	Vertical Depth (ft)	Reference (ft)	Offset (ft)	Highside Toolface (°)	Offset Wellbore Centre +N/-S (ft)	+E/-W (ft)	Between Centres (ft)	Between Ellipses (ft)	Minimum Separation (ft)	Separation Factor	
2,200.0	2,117.1	2,097.7	1,984.0	11.0	12.6	-127.89	-149.8	465.4	673.8	653.3	20.53	32.824	
2,300.0	2,210.9	2,187.4	2,063.1	11.7	13.5	-126.56	-173.8	500.1	715.5	693.6	21.91	32.651	
2,400.0	2,304.6	2,277.1	2,142.3	12.4	14.4	-125.38	-197.9	534.8	757.5	734.2	23.29	32.519	
2,500.0	2,398.3	2,366.8	2,221.4	13.1	15.4	-124.32	-222.0	569.5	799.7	775.0	24.67	32.419	
2,600.0	2,492.1	2,456.5	2,300.5	13.8	16.3	-123.37	-246.0	604.2	842.1	816.1	26.04	32.343	
2,700.0	2,585.8	2,546.1	2,379.6	14.5	17.2	-122.50	-270.1	638.9	884.8	857.4	27.40	32.287	
2,800.0	2,679.5	2,635.8	2,458.7	15.2	18.1	-121.72	-294.2	673.6	927.5	898.8	28.76	32.245	
2,900.0	2,773.3	2,725.5	2,537.8	15.9	19.0	-121.00	-318.3	708.3	970.4	940.3	30.12	32.215	
3,000.0	2,867.0	2,815.2	2,616.9	16.6	20.0	-120.34	-342.3	743.0	1,013.4	981.9	31.48	32.194	
3,100.0	2,960.7	2,904.9	2,696.1	17.3	20.9	-119.73	-366.4	777.8	1,056.5	1,023.7	32.83	32.180	
3,200.0	3,054.5	2,994.6	2,775.2	18.0	21.8	-119.18	-390.5	812.5	1,099.7	1,065.6	34.18	32.173	
3,300.0	3,148.2	3,084.2	2,854.3	18.7	22.7	-118.66	-414.5	847.2	1,143.0	1,107.5	35.53	32.170 SF	
3,400.0	3,241.9	3,173.9	2,933.4	19.4	23.6	-118.18	-438.6	881.9	1,186.4	1,149.5	36.88	32.171	
3,500.0	3,335.6	3,263.6	3,012.5	20.1	24.6	-117.73	-462.7	916.6	1,229.8	1,191.6	38.22	32.175	
3,600.0	3,429.4	3,353.3	3,091.6	20.8	25.5	-117.32	-486.7	951.3	1,273.3	1,233.7	39.57	32.181	
3,700.0	3,523.1	3,443.0	3,170.7	21.5	26.4	-116.93	-510.8	986.0	1,316.8	1,275.9	40.91	32.190	
3,800.0	3,616.8	3,532.7	3,249.9	22.2	27.3	-116.57	-534.9	1,020.7	1,360.4	1,318.1	42.25	32.199	
3,900.0	3,710.6	3,622.3	3,329.0	22.9	28.3	-116.23	-558.9	1,055.4	1,404.0	1,360.4	43.59	32.210	
4,000.0	3,804.3	3,712.0	3,408.1	23.6	29.2	-115.91	-583.0	1,090.1	1,447.6	1,402.7	44.93	32.222	
4,100.0	3,898.0	3,801.7	3,487.2	24.3	30.1	-115.60	-607.1	1,124.8	1,491.3	1,445.0	46.26	32.235	
4,200.0	3,991.8	3,891.4	3,566.3	25.0	31.0	-115.32	-631.1	1,159.5	1,535.0	1,487.4	47.60	32.248	
4,300.0	4,085.5	3,981.1	3,645.4	25.7	32.0	-115.05	-655.2	1,194.2	1,578.8	1,529.8	48.94	32.262	
4,400.0	4,179.2	4,070.7	3,724.6	26.4	32.9	-114.80	-679.3	1,228.9	1,622.5	1,572.3	50.27	32.276	
4,500.0	4,273.0	4,160.4	3,803.7	27.1	33.8	-114.55	-703.3	1,263.6	1,666.3	1,614.7	51.60	32.290	
4,600.0	4,366.7	4,250.1	3,882.8	27.8	34.7	-114.32	-727.4	1,298.4	1,710.1	1,657.2	52.94	32.304	
4,700.0	4,460.4	4,339.8	3,961.9	28.5	35.7	-114.11	-751.5	1,333.1	1,754.0	1,699.7	54.27	32.318	
4,800.0	4,554.1	4,429.5	4,041.0	29.2	36.6	-113.90	-775.5	1,367.8	1,797.8	1,742.2	55.60	32.333	
4,900.0	4,647.9	4,519.2	4,120.1	29.9	37.5	-113.70	-799.6	1,402.5	1,841.7	1,784.8	56.94	32.347	
5,000.0	4,741.6	4,608.8	4,199.2	30.6	38.4	-113.51	-823.7	1,437.2	1,885.6	1,827.3	58.27	32.361	
5,100.0	4,835.3	4,698.5	4,278.4	31.3	39.4	-113.33	-847.7	1,471.9	1,929.5	1,869.9	59.60	32.375	
5,170.7	4,901.6	4,761.9	4,334.3	31.8	40.0	-113.21	-864.7	1,496.4	1,960.6	1,900.0	60.54	32.384	
5,200.0	4,929.1	4,788.2	4,357.5	31.9	40.3	-113.42	-871.8	1,506.6	1,973.4	1,912.4	61.00	32.351	
5,300.0	5,023.8	4,878.2	4,436.9	32.4	41.2	-114.05	-895.9	1,541.4	2,016.3	1,953.9	62.43	32.296	
5,400.0	5,119.5	4,968.4	4,516.5	32.8	42.2	-114.55	-920.2	1,576.3	2,058.1	1,994.2	63.82	32.249	
5,500.0	5,216.2	5,058.9	4,596.2	33.2	43.1	-114.95	-944.4	1,611.3	2,098.5	2,033.4	65.14	32.213	
5,600.0	5,313.7	5,149.3	4,676.0	33.5	44.0	-115.24	-968.7	1,646.3	2,137.7	2,071.3	66.41	32.190	
5,700.0	5,411.9	5,239.7	4,755.8	33.8	45.0	-115.44	-993.0	1,681.3	2,175.7	2,108.1	67.61	32.182	
5,800.0	5,510.7	5,330.0	4,835.4	34.1	45.9	-115.54	-1,017.2	1,716.3	2,212.5	2,143.8	68.73	32.190	
5,900.0	5,610.0	5,420.0	4,914.8	34.3	46.8	-115.56	-1,041.3	1,751.1	2,248.2	2,178.4	69.78	32.216	
6,000.0	5,709.6	5,509.5	4,993.8	34.5	47.7	-115.51	-1,065.4	1,785.7	2,282.8	2,212.0	70.76	32.263	
6,100.0	5,809.5	5,598.6	5,072.4	34.6	48.7	-115.39	-1,089.3	1,820.2	2,316.3	2,244.6	71.64	32.330	
6,190.5	5,900.0	5,678.7	5,143.1	34.7	49.5	74.29	-1,110.8	1,851.2	2,345.8	2,273.4	72.39	32.406	
6,200.0	5,909.5	5,687.1	5,150.5	34.7	49.6	74.37	-1,113.0	1,854.5	2,348.9	2,276.4	72.44	32.423	
6,300.0	6,009.5	5,775.3	5,228.3	34.7	50.5	75.18	-1,136.7	1,888.6	2,381.3	2,308.3	73.02	32.612	
6,400.0	6,109.5	5,863.6	5,306.1	34.8	51.4	75.98	-1,160.4	1,922.8	2,414.3	2,340.7	73.58	32.813	
6,500.0	6,209.5	5,951.8	5,383.9	34.9	52.3	76.75	-1,184.0	1,956.9	2,447.7	2,373.6	74.12	33.024	
6,600.0	6,309.5	6,040.0	5,461.7	34.9	53.2	77.51	-1,207.7	1,991.0	2,481.6	2,406.9	74.65	33.244	
6,700.0	6,409.5	6,128.2	5,539.6	35.0	54.1	78.25	-1,231.4	2,025.2	2,515.9	2,440.7	75.16	33.474	
6,800.0	6,509.5	6,216.4	5,617.4	35.1	55.1	78.97	-1,255.1	2,059.3	2,550.6	2,474.9	75.66	33.712	
6,900.0	6,609.5	6,304.5	5,695.1	35.1	56.7	80.47	-1,306.1	2,132.9	2,584.5	2,508.1	76.40	33.827	
7,000.0	6,709.5	6,404.5	5,772.9	35.2	58.6	82.19	-1,368.1	2,222.4	2,612.6	2,535.5	77.13	33.871	
7,100.0	6,809.5	6,504.5	5,850.7	35.3	60.1	83.47	-1,416.9	2,292.7	2,633.3	2,555.6	77.70	33.890	

CC - Min centre to center distance or convergent point, SF - min separation factor, ES - min ellipse separation

Company:	Mineral Resources Inc	Local Co-ordinate Reference:	Well Edmoor 6-6-2
Project:	SEC.2-T5N-R66W	TVD Reference:	WELL @ 4712.0ft (Original Well Elev)
Reference Site:	Bestway Pad Sec.2-T5N-R66W	MD Reference:	WELL @ 4712.0ft (Original Well Elev)
Site Error:	0.0ft	North Reference:	True
Reference Well:	Edmoor 6-6-2	Survey Calculation Method:	Minimum Curvature
Well Error:	0.0ft	Output errors are at	2.00 sigma
Reference Wellbore	Wellbore #1	Database:	Landmark
Reference Design:	Plan #1 (8-05-11)	Offset TVD Reference:	Offset Datum

Offset Design Bestway Pad Sec.2-T5N-R66W - Franklin Park 2-6-1 - Wellbore #1 - Plan #1 (8-05-11)												Offset Site Error:	0.0 ft
Survey Program: 0-MWD												Offset Well Error:	0.0 ft
Reference		Offset		Semi Major Axis			Distance						
Measured Depth (ft)	Vertical Depth (ft)	Measured Depth (ft)	Vertical Depth (ft)	Reference (ft)	Offset (ft)	Highside Toolface (°)	Offset Wellbore Centre +N/-S (ft)	+E/-W (ft)	Between Centres (ft)	Between Ellipses (ft)	Minimum Separation (ft)	Separation Factor	Warning
7,200.0	6,909.5	7,214.1	6,557.0	35.4	60.7	83.99	-1,437.8	2,322.8	2,647.2	2,569.2	78.03	33.928	
7,300.0	7,009.5	7,312.6	6,654.0	35.4	61.1	84.24	-1,447.5	2,336.8	2,660.5	2,582.2	78.27	33.992	
7,400.0	7,109.5	7,411.1	6,750.9	35.5	61.5	84.48	-1,457.2	2,350.9	2,673.8	2,595.3	78.51	34.056	
7,500.0	7,209.5	7,509.5	6,847.9	35.6	61.8	84.72	-1,467.0	2,364.9	2,687.2	2,608.4	78.76	34.120	
7,600.0	7,309.5	7,608.0	6,944.9	35.7	62.2	84.95	-1,476.7	2,379.0	2,700.6	2,621.6	79.00	34.184	
7,700.0	7,409.5	7,706.5	7,041.9	35.7	62.6	85.18	-1,486.5	2,393.0	2,714.0	2,634.8	79.25	34.247	
7,800.0	7,509.5	7,805.0	7,138.9	35.8	62.9	85.41	-1,496.2	2,407.1	2,727.5	2,648.0	79.50	34.310	
7,900.0	7,609.5	7,903.5	7,235.9	35.9	63.3	85.64	-1,506.0	2,421.1	2,741.1	2,661.3	79.74	34.373	
8,000.0	7,709.5	8,001.9	7,332.8	36.0	63.7	85.87	-1,515.7	2,435.2	2,754.6	2,674.7	79.99	34.436	
8,090.5	7,800.0	8,091.1	7,420.6	36.1	64.0	86.07	-1,524.5	2,447.9	2,767.0	2,686.8	80.22	34.492	

Company:	Mineral Resources Inc	Local Co-ordinate Reference:	Well Edmoor 6-6-2
Project:	SEC.2-T5N-R66W	TVD Reference:	WELL @ 4712.0ft (Original Well Elev)
Reference Site:	Bestway Pad Sec.2-T5N-R66W	MD Reference:	WELL @ 4712.0ft (Original Well Elev)
Site Error:	0.0ft	North Reference:	True
Reference Well:	Edmoor 6-6-2	Survey Calculation Method:	Minimum Curvature
Well Error:	0.0ft	Output errors are at	2.00 sigma
Reference Wellbore	Wellbore #1	Database:	Landmark
Reference Design:	Plan #1 (8-05-11)	Offset TVD Reference:	Offset Datum

Offset Design													Offset Site Error:	0.0ft
Survey Program: 0-MWD													Offset Well Error:	0.0ft
Reference		Offset		Semi Major Axis			Distance							Warning
Measured Depth (ft)	Vertical Depth (ft)	Measured Depth (ft)	Vertical Depth (ft)	Reference (ft)	Offset (ft)	Highside Toolface (°)	Offset Wellbore Centre +N/-S (ft)	+E/-W (ft)	Between Centres (ft)	Between Ellipses (ft)	Minimum Separation (ft)	Separation Factor		
0.0	0.0	2.0	2.0	0.0	0.0	-29.82	87.4	-50.1	100.8	100.8	0.00	N/A		
100.0	100.0	102.0	102.0	0.1	0.1	-29.82	87.4	-50.1	100.8	100.5	0.23	439.574		
200.0	200.0	202.0	202.0	0.3	0.3	-29.82	87.4	-50.1	100.8	100.1	0.68	148.536		
200.2	200.2	202.2	202.2	0.3	0.3	-29.82	87.4	-50.1	100.8	100.1	0.68	148.370 CC, ES		
300.0	300.0	302.2	302.2	0.5	0.6	140.26	86.4	-51.6	102.0	100.9	1.09	93.407		
400.0	399.8	402.3	402.1	0.8	0.8	139.15	83.5	-56.1	105.7	104.2	1.52	69.718		
500.0	499.5	502.2	501.6	1.0	1.0	137.48	78.6	-63.4	112.0	110.0	2.00	56.049		
600.0	598.7	601.7	600.3	1.3	1.3	135.45	71.9	-73.5	121.0	118.4	2.55	47.486		
700.0	697.5	700.7	698.2	1.6	1.6	133.25	63.3	-86.5	132.6	129.4	3.17	41.762		
800.0	795.6	799.2	794.8	2.0	2.0	131.01	52.9	-102.2	146.9	143.0	3.89	37.745		
900.0	893.1	897.0	890.2	2.4	2.5	128.86	40.8	-120.4	164.0	159.3	4.71	34.827		
1,000.0	989.6	994.1	983.9	2.9	3.0	126.85	27.0	-141.3	183.8	178.2	5.63	32.657		
1,100.0	1,085.3	1,090.3	1,076.0	3.5	3.5	125.00	11.6	-164.5	206.3	199.7	6.65	31.016		
1,200.0	1,179.8	1,185.6	1,166.3	4.1	4.1	123.31	-5.3	-190.0	231.5	223.7	7.78	29.757		
1,219.8	1,198.4	1,204.3	1,183.9	4.3	4.3	123.00	-8.8	-195.4	236.7	228.7	8.01	29.554		
1,300.0	1,273.6	1,280.0	1,254.6	4.8	4.8	121.96	-23.7	-217.8	258.6	249.6	9.00	28.718		
1,400.0	1,367.3	1,373.6	1,341.1	5.5	5.5	120.34	-43.5	-247.7	286.6	276.3	10.31	27.807		
1,500.0	1,461.0	1,466.2	1,425.4	6.2	6.3	118.46	-64.7	-279.6	315.7	304.0	11.67	27.058		
1,600.0	1,554.8	1,557.7	1,507.4	6.8	7.1	116.43	-87.0	-313.3	346.0	332.9	13.08	26.458		
1,700.0	1,648.5	1,647.8	1,587.0	7.5	8.0	114.30	-110.4	-348.6	377.6	363.1	14.52	26.007		
1,800.0	1,742.2	1,736.5	1,663.9	8.2	8.9	112.14	-134.8	-385.4	410.9	394.9	15.99	25.701		
1,900.0	1,836.0	1,827.0	1,741.2	8.9	9.9	109.96	-160.8	-424.6	445.5	428.0	17.49	25.476		
2,000.0	1,929.7	1,919.3	1,820.0	9.6	10.9	108.03	-187.4	-464.7	480.8	461.8	19.00	25.310		
2,100.0	2,023.4	2,011.7	1,898.8	10.3	11.9	106.35	-214.0	-504.9	516.6	496.1	20.49	25.206		
2,200.0	2,117.1	2,104.1	1,977.6	11.0	12.9	104.89	-240.6	-545.0	552.6	530.7	21.98	25.146		
2,300.0	2,210.9	2,196.5	2,056.5	11.7	13.9	103.61	-267.2	-585.2	589.0	565.6	23.45	25.116		
2,400.0	2,304.6	2,288.9	2,135.3	12.4	14.9	102.47	-293.9	-625.4	625.6	600.7	24.92	25.107 SF		
2,500.0	2,398.3	2,381.2	2,214.1	13.1	16.0	101.46	-320.5	-665.5	662.4	636.0	26.37	25.114		
2,600.0	2,492.1	2,473.6	2,292.9	13.8	17.0	100.55	-347.1	-705.7	699.3	671.5	27.83	25.131		
2,700.0	2,585.8	2,566.0	2,371.8	14.5	18.0	99.73	-373.7	-745.8	736.4	707.1	29.27	25.157		
2,800.0	2,679.5	2,658.4	2,450.6	15.2	19.0	99.00	-400.3	-786.0	773.6	742.9	30.71	25.187		
2,900.0	2,773.3	2,750.8	2,529.4	15.9	20.1	98.32	-427.0	-826.2	810.9	778.7	32.15	25.222		
3,000.0	2,867.0	2,843.1	2,608.2	16.6	21.1	97.71	-453.6	-866.3	848.3	814.7	33.58	25.258		
3,100.0	2,960.7	2,935.5	2,687.0	17.3	22.1	97.15	-480.2	-906.5	885.7	850.7	35.01	25.297		
3,200.0	3,054.5	3,027.9	2,765.9	18.0	23.2	96.63	-506.8	-946.6	923.2	886.8	36.44	25.335		
3,300.0	3,148.2	3,120.3	2,844.7	18.7	24.2	96.16	-533.4	-986.8	960.8	923.0	37.87	25.375		
3,400.0	3,241.9	3,212.7	2,923.5	19.4	25.2	95.72	-560.1	-1,027.0	998.5	959.2	39.29	25.414		
3,500.0	3,335.6	3,305.0	3,002.3	20.1	26.3	95.31	-586.7	-1,067.1	1,036.2	995.5	40.71	25.452		
3,600.0	3,429.4	3,397.4	3,081.1	20.8	27.3	94.93	-613.3	-1,107.3	1,073.9	1,031.8	42.13	25.491		
3,700.0	3,523.1	3,489.8	3,160.0	21.5	28.3	94.57	-639.9	-1,147.4	1,111.7	1,068.1	43.55	25.528		
3,800.0	3,616.8	3,582.2	3,238.8	22.2	29.4	94.24	-666.5	-1,187.6	1,149.5	1,104.5	44.96	25.565		
3,900.0	3,710.6	3,674.6	3,317.6	22.9	30.4	93.93	-693.2	-1,227.8	1,187.3	1,140.9	46.38	25.600		
4,000.0	3,804.3	3,766.9	3,396.4	23.6	31.4	93.64	-719.8	-1,267.9	1,225.2	1,177.4	47.79	25.635		
4,100.0	3,898.0	3,859.3	3,475.2	24.3	32.5	93.37	-746.4	-1,308.1	1,263.1	1,213.9	49.21	25.669		
4,200.0	3,991.8	3,951.7	3,554.1	25.0	33.5	93.11	-773.0	-1,348.2	1,301.0	1,250.4	50.62	25.702		
4,300.0	4,085.5	4,044.1	3,632.9	25.7	34.5	92.87	-799.6	-1,388.4	1,338.9	1,286.9	52.03	25.734		
4,400.0	4,179.2	4,136.5	3,711.7	26.4	35.6	92.64	-826.2	-1,428.5	1,376.9	1,323.4	53.44	25.765		
4,500.0	4,273.0	4,228.8	3,790.5	27.1	36.6	92.42	-852.9	-1,468.7	1,414.8	1,360.0	54.85	25.795		
4,600.0	4,366.7	4,321.2	3,869.4	27.8	37.6	92.21	-879.5	-1,508.9	1,452.8	1,396.6	56.26	25.824		
4,700.0	4,460.4	4,413.6	3,948.2	28.5	38.7	92.02	-906.1	-1,549.0	1,490.8	1,433.2	57.67	25.852		
4,800.0	4,554.1	4,506.0	4,027.0	29.2	39.7	91.83	-932.7	-1,589.2	1,528.8	1,469.8	59.08	25.879		
4,900.0	4,647.9	4,598.4	4,105.8	29.9	40.7	91.65	-959.3	-1,629.3	1,566.9	1,506.4	60.48	25.906		

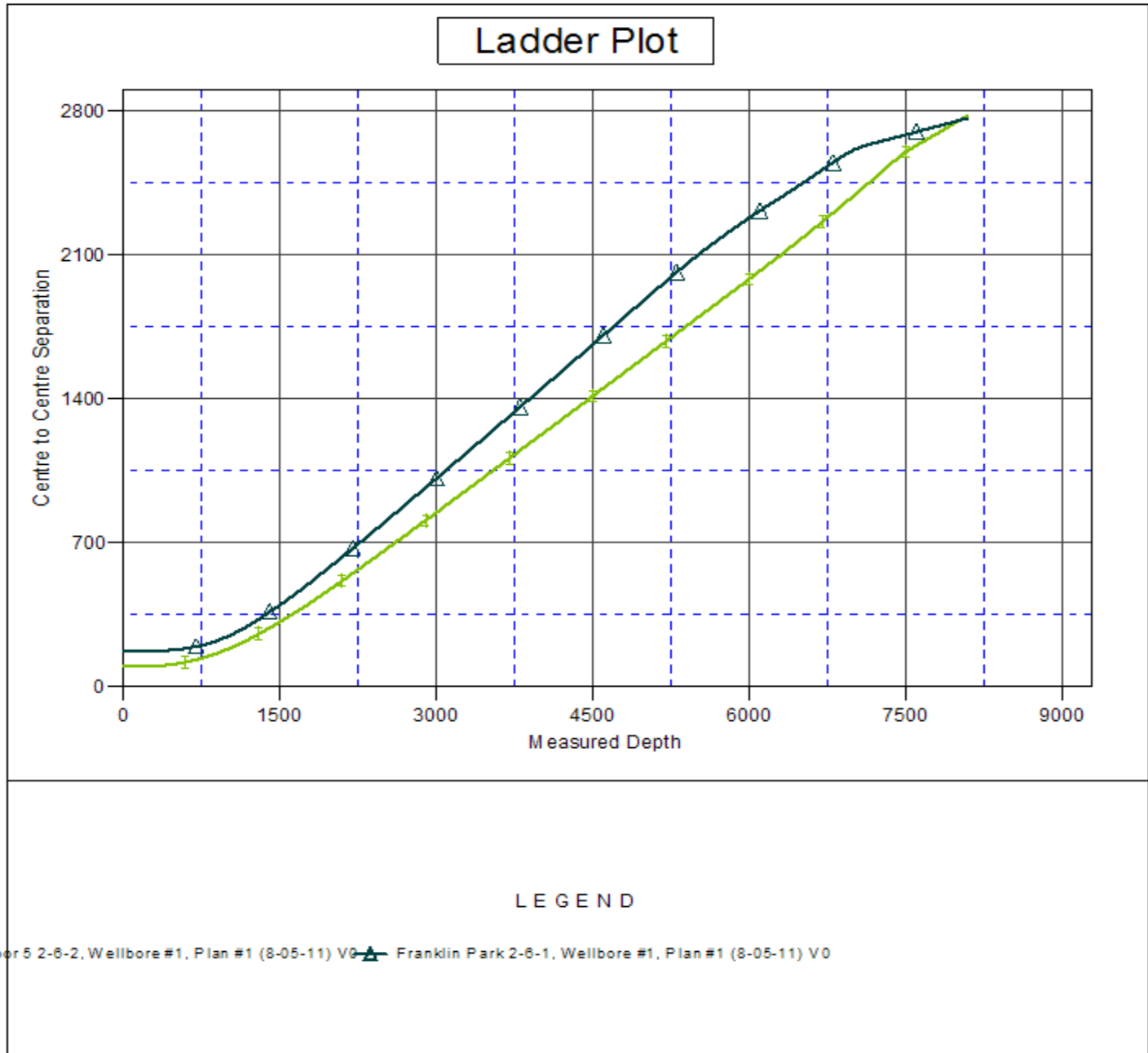
CC - Min centre to center distance or convergent point, SF - min separation factor, ES - min ellipse separation

Company:	Mineral Resources Inc	Local Co-ordinate Reference:	Well Edmoor 6-6-2
Project:	SEC.2-T5N-R66W	TVD Reference:	WELL @ 4712.0ft (Original Well Elev)
Reference Site:	Bestway Pad Sec.2-T5N-R66W	MD Reference:	WELL @ 4712.0ft (Original Well Elev)
Site Error:	0.0ft	North Reference:	True
Reference Well:	Edmoor 6-6-2	Survey Calculation Method:	Minimum Curvature
Well Error:	0.0ft	Output errors are at	2.00 sigma
Reference Wellbore	Wellbore #1	Database:	Landmark
Reference Design:	Plan #1 (8-05-11)	Offset TVD Reference:	Offset Datum

Offset Design												Offset Site Error:	0.0 ft
Survey Program: 0-MWD												Offset Well Error:	0.0 ft
Reference		Offset		Semi Major Axis			Distance						
Measured Depth (ft)	Vertical Depth (ft)	Measured Depth (ft)	Vertical Depth (ft)	Reference (ft)	Offset (ft)	Highside Toolface (°)	Offset Wellbore Centre +N/-S (ft)	+E/-W (ft)	Between Centres (ft)	Between Ellipses (ft)	Minimum Separation (ft)	Separation Factor	Warning
5,000.0	4,741.6	4,690.7	4,184.6	30.6	41.8	91.48	-986.0	-1,669.5	1,604.9	1,543.0	61.89	25.932	
5,100.0	4,835.3	4,783.1	4,263.5	31.3	42.8	91.32	-1,012.6	-1,709.7	1,643.0	1,579.7	63.30	25.957	
5,170.7	4,901.6	4,848.4	4,319.2	31.8	43.5	91.21	-1,031.4	-1,738.1	1,669.9	1,605.6	64.29	25.974	
5,200.0	4,929.1	4,875.5	4,342.3	31.9	43.8	91.40	-1,039.2	-1,749.8	1,681.0	1,616.3	64.76	25.956	
5,300.0	5,023.8	4,967.7	4,421.0	32.4	44.9	91.98	-1,065.8	-1,789.9	1,719.0	1,652.8	66.23	25.957	
5,400.0	5,119.5	5,059.7	4,499.4	32.8	45.9	92.44	-1,092.3	-1,829.9	1,757.0	1,689.4	67.62	25.983	
5,500.0	5,216.2	5,151.3	4,577.6	33.2	46.9	92.80	-1,118.7	-1,869.7	1,794.9	1,725.9	68.94	26.035	
5,600.0	5,313.7	5,242.4	4,655.3	33.5	47.9	93.07	-1,144.9	-1,909.3	1,832.7	1,762.6	70.19	26.112	
5,700.0	5,411.9	5,332.9	4,732.5	33.8	49.0	93.25	-1,171.0	-1,948.6	1,870.6	1,799.2	71.35	26.216	
5,800.0	5,510.7	5,422.6	4,809.1	34.1	50.0	93.36	-1,196.8	-1,987.7	1,908.5	1,836.1	72.44	26.346	
5,900.0	5,610.0	5,511.6	4,885.0	34.3	51.0	93.39	-1,222.5	-2,026.3	1,946.5	1,873.1	73.44	26.504	
6,000.0	5,709.6	5,599.6	4,960.1	34.5	51.9	93.37	-1,247.8	-2,064.6	1,984.7	1,910.4	74.37	26.688	
6,100.0	5,809.5	5,686.5	5,034.3	34.6	52.9	93.30	-1,272.9	-2,102.4	2,023.2	1,948.0	75.21	26.900	
6,190.5	5,900.0	5,764.2	5,100.6	34.7	53.8	-77.29	-1,295.3	-2,136.2	2,058.3	1,982.3	75.92	27.112	
6,200.0	5,909.5	5,772.3	5,107.5	34.7	53.9	-77.39	-1,297.6	-2,139.7	2,062.0	1,986.0	75.95	27.151	
6,300.0	6,009.5	5,857.7	5,180.3	34.7	54.8	-78.34	-1,322.2	-2,176.8	2,101.2	2,025.0	76.23	27.564	
6,400.0	6,109.5	5,943.0	5,253.1	34.8	55.8	-79.26	-1,346.8	-2,213.9	2,141.1	2,064.6	76.51	27.986	
6,500.0	6,209.5	6,028.3	5,325.9	34.9	56.7	-80.15	-1,371.4	-2,251.0	2,181.4	2,104.7	76.76	28.417	
6,600.0	6,309.5	6,113.6	5,398.7	34.9	57.7	-81.02	-1,396.0	-2,288.1	2,222.3	2,145.2	77.01	28.856	
6,700.0	6,409.5	6,198.9	5,471.5	35.0	58.7	-81.86	-1,420.5	-2,325.1	2,263.6	2,186.3	77.25	29.302	
6,800.0	6,509.5	6,284.3	5,544.3	35.1	59.6	-82.67	-1,445.1	-2,362.2	2,305.3	2,227.8	77.48	29.754	
6,900.0	6,609.5	6,369.6	5,617.1	35.1	60.6	-83.45	-1,469.7	-2,399.3	2,347.5	2,269.8	77.70	30.212	
7,000.0	6,709.5	6,454.9	5,689.9	35.2	61.5	-84.21	-1,494.3	-2,436.4	2,390.0	2,312.1	77.91	30.676	
7,100.0	6,809.5	6,540.2	5,762.7	35.3	62.5	-84.95	-1,518.9	-2,473.5	2,433.0	2,354.8	78.12	31.143	
7,200.0	6,909.5	6,625.6	5,835.5	35.4	63.4	-85.66	-1,543.5	-2,510.6	2,476.2	2,397.9	78.33	31.615	
7,300.0	7,009.5	6,710.9	5,908.3	35.4	64.4	-86.35	-1,568.1	-2,547.7	2,519.9	2,441.3	78.53	32.090	
7,400.0	7,109.5	6,796.2	5,981.1	35.5	65.3	-87.02	-1,592.6	-2,584.8	2,563.8	2,485.1	78.72	32.567	
7,500.0	7,209.5	6,881.6	6,053.9	35.6	66.3	-87.77	-1,617.2	-2,621.9	2,603.8	2,525.0	78.88	33.042	
7,600.0	7,309.5	6,967.8	6,126.7	35.7	67.3	-88.52	-1,641.8	-2,659.0	2,643.6	2,564.6	79.03	33.517	
7,700.0	7,409.5	7,053.9	6,200.0	35.7	68.3	-89.27	-1,666.4	-2,696.1	2,683.4	2,605.4	79.18	33.992	
7,800.0	7,509.5	7,139.9	6,273.1	35.8	69.3	-90.02	-1,691.0	-2,733.2	2,723.2	2,646.2	79.33	34.467	
7,900.0	7,609.5	7,225.9	6,346.3	35.9	70.3	-90.77	-1,715.6	-2,770.3	2,763.0	2,687.0	79.48	34.942	
8,000.0	7,709.5	7,311.9	6,419.5	36.0	71.3	-91.52	-1,740.2	-2,807.4	2,802.8	2,727.8	79.63	35.417	
8,090.5	7,800.0	7,397.7	6,492.7	36.1	72.3	-92.27	-1,764.8	-2,844.5	2,848.0	2,768.6	79.78	35.892	

Company:	Mineral Resources Inc	Local Co-ordinate Reference:	Well Edmoor 6-6-2
Project:	SEC.2-T5N-R66W	TVD Reference:	WELL @ 4712.0ft (Original Well Elev)
Reference Site:	Bestway Pad Sec.2-T5N-R66W	MD Reference:	WELL @ 4712.0ft (Original Well Elev)
Site Error:	0.0ft	North Reference:	True
Reference Well:	Edmoor 6-6-2	Survey Calculation Method:	Minimum Curvature
Well Error:	0.0ft	Output errors are at	2.00 sigma
Reference Wellbore	Wellbore #1	Database:	Landmark
Reference Design:	Plan #1 (8-05-11)	Offset TVD Reference:	Offset Datum

Reference Depths are relative to WELL @ 4712.0ft (Original Well Elev) Coordinates are relative to: Edmoor 6-6-2
Offset Depths are relative to Offset Datum
Coordinate System is US State Plane 1983, Colorado Northern Zone
Central Meridian is -105.500000 °
Grid Convergence at Surface is: 0.49°



Company:	Mineral Resources Inc	Local Co-ordinate Reference:	Well Edmoor 6-6-2
Project:	SEC.2-T5N-R66W	TVD Reference:	WELL @ 4712.0ft (Original Well Elev)
Reference Site:	Bestway Pad Sec.2-T5N-R66W	MD Reference:	WELL @ 4712.0ft (Original Well Elev)
Site Error:	0.0ft	North Reference:	True
Reference Well:	Edmoor 6-6-2	Survey Calculation Method:	Minimum Curvature
Well Error:	0.0ft	Output errors are at	2.00 sigma
Reference Wellbore	Wellbore #1	Database:	Landmark
Reference Design:	Plan #1 (8-05-11)	Offset TVD Reference:	Offset Datum

Reference Depths are relative to WELL @ 4712.0ft (Original Well Elev) Coordinates are relative to: Edmoor 6-6-2
Offset Depths are relative to Offset Datum Coordinate System is US State Plane 1983, Colorado Northern Zone
Central Meridian is -105.500000 ° Grid Convergence at Surface is: 0.49°

