

PETROLEUM DEVELOPMENT CORP Weld County CO

Well Name: **Rosett 24-26H**

Surface Location: Rosett 24-26H Pad Sec.26-T7N-R61W
North American Datum 1983 , US State Plane 1983Colorado Northern Zone

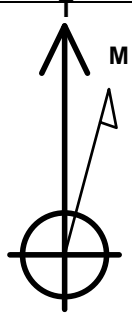
Ground Elevation: 4858.0

+N/-S +E/-W Northing Easting Latitude Longitude Slot
0.0 0.0 1441854.31 3367790.03 40.538757 -104.176681

RKB Ensign 32 - 15' WELL @ 4873.0ft (RKB Ensign 32 - 15')

WELLBORE TARGET DETAILS (MAP CO-ORDINATES AND LAT/LONG)

Name	TVD	+N/-S	+E/-W	Northing	Easting	Latitude	Longitude	Shape
HARDLINE BHL 460'FNL & 460'FEL	1.0	4867.9	2533.0	1446759.31	3370250.03	40.552118	-104.167566	Polygon
HARDLINE SHL 460'FSL	1.0	410.0	-400.0	1442258.28	3367383.97	40.539882	-104.178120	Polygon
TARGET BHL 500'FNL & 500'FEL	6043.0	4817.9	2483.0	1446708.59	3370200.77	40.551981	-104.167746	Point



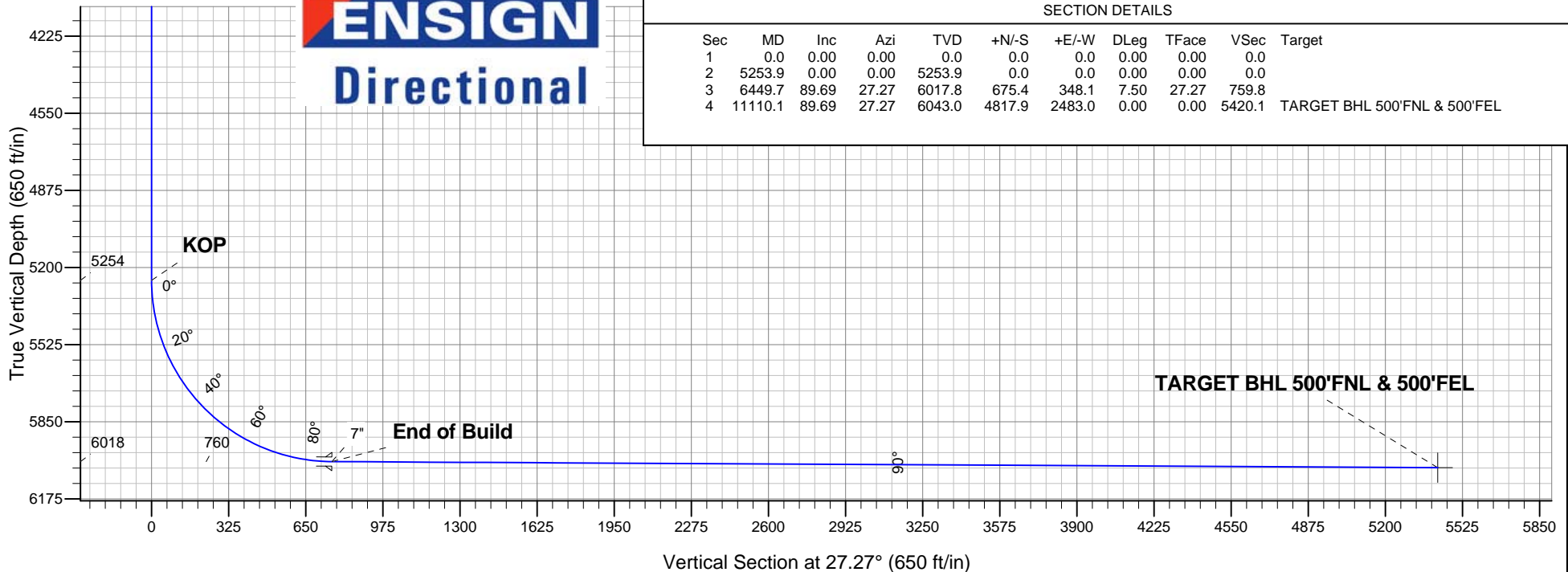
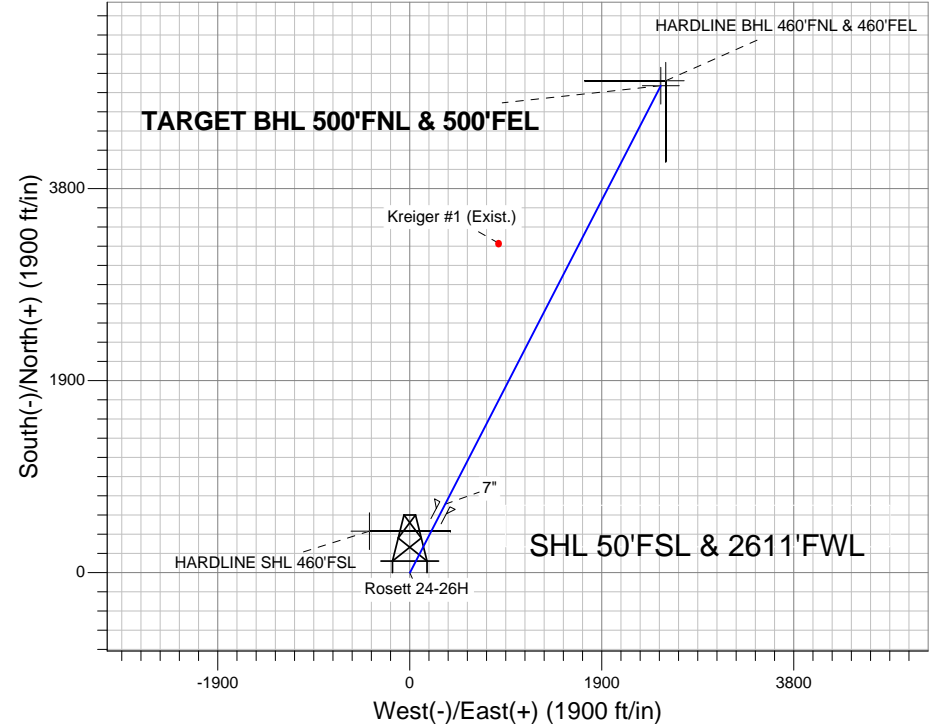
Azimuths to True North
Magnetic North: 8.52°

Magnetic Field
Strength: 53234.0snT
Dip Angle: 67.25°
Date: 10/3/2011
Model: IGRF2010

ANNOTATIONS

TVD	MD	Annotation
5253.9	5253.9	KOP
6017.8	6449.7	End of Build

Rosett 24-26H Pad Sec.26-T7N-R61W
Rosett 24-26H
Plan #1 (10-3-11)
10:55, October 06 2011



SECTION DETAILS

Sec	MD	Inc	Azi	TVD	+N/-S	+E/-W	DLeg	TFace	VSec	Target
1	0.0	0.00	0.00	0.0	0.0	0.0	0.00	0.00	0.0	
2	5253.9	0.00	0.00	5253.9	0.0	0.0	0.00	0.00	0.0	
3	6449.7	89.69	27.27	6017.8	675.4	348.1	7.50	27.27	759.8	
4	11110.1	89.69	27.27	6043.0	4817.9	2483.0	0.00	0.00	5420.1	TARGET BHL 500'FNL & 500'FEL