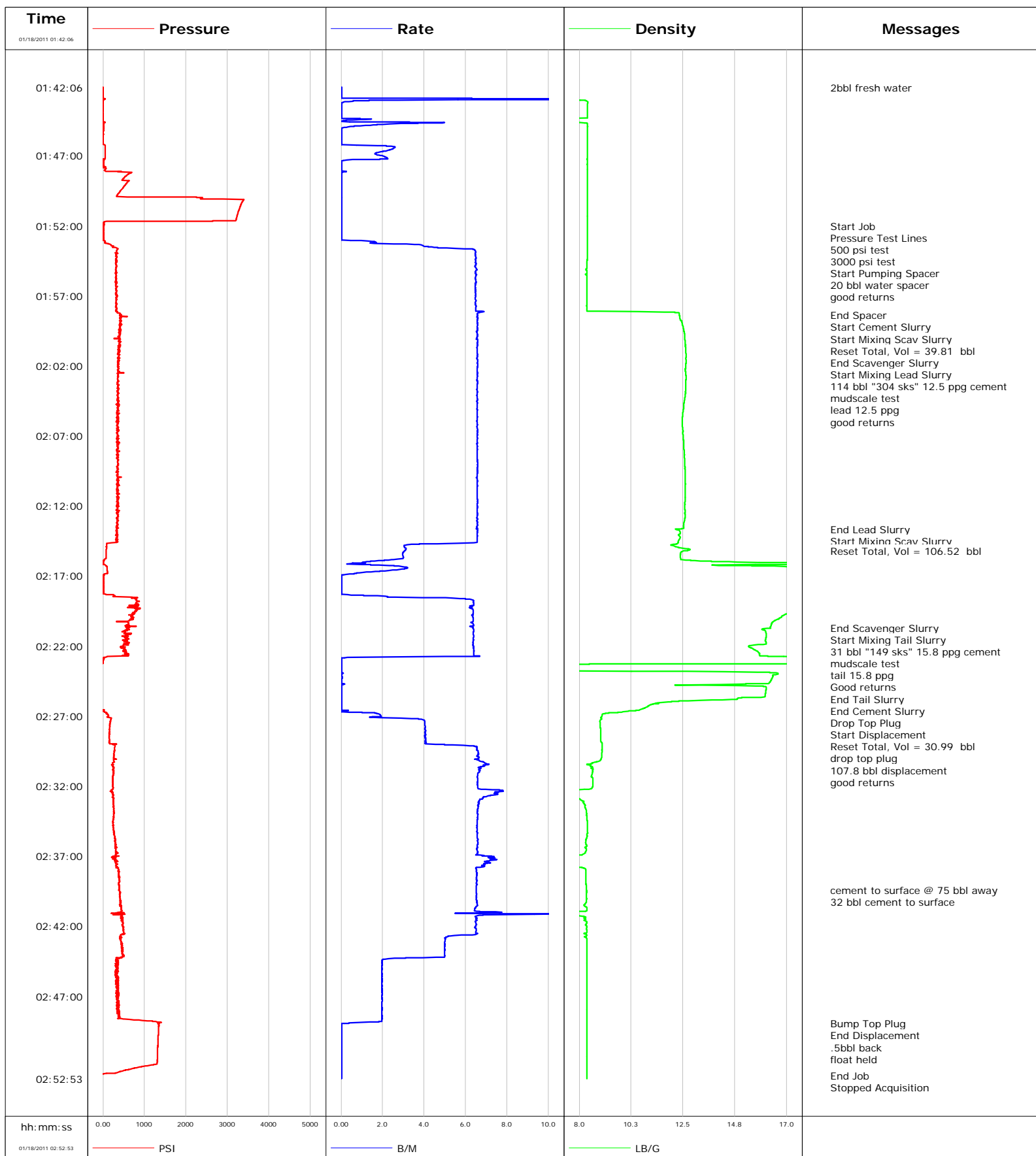


Well Benjamin Federal 28 13B1
Field Mamm Creek
Engineer Dustin C Krueger
Country United States

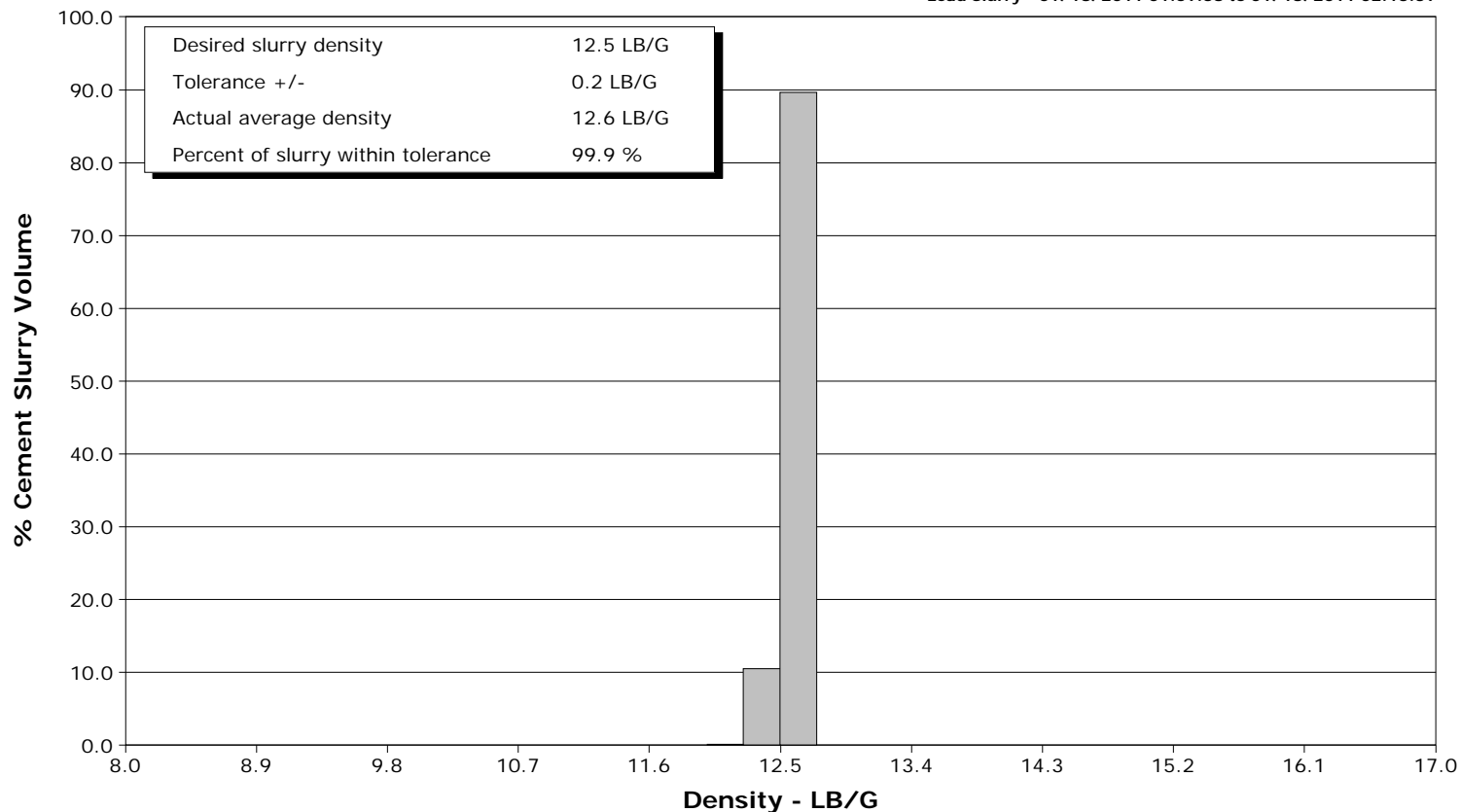
Client Encana Oil Gas
SIR No. 000470685
Job Type 9 5/8 1440ft Surface
Job Date 01-17-2011



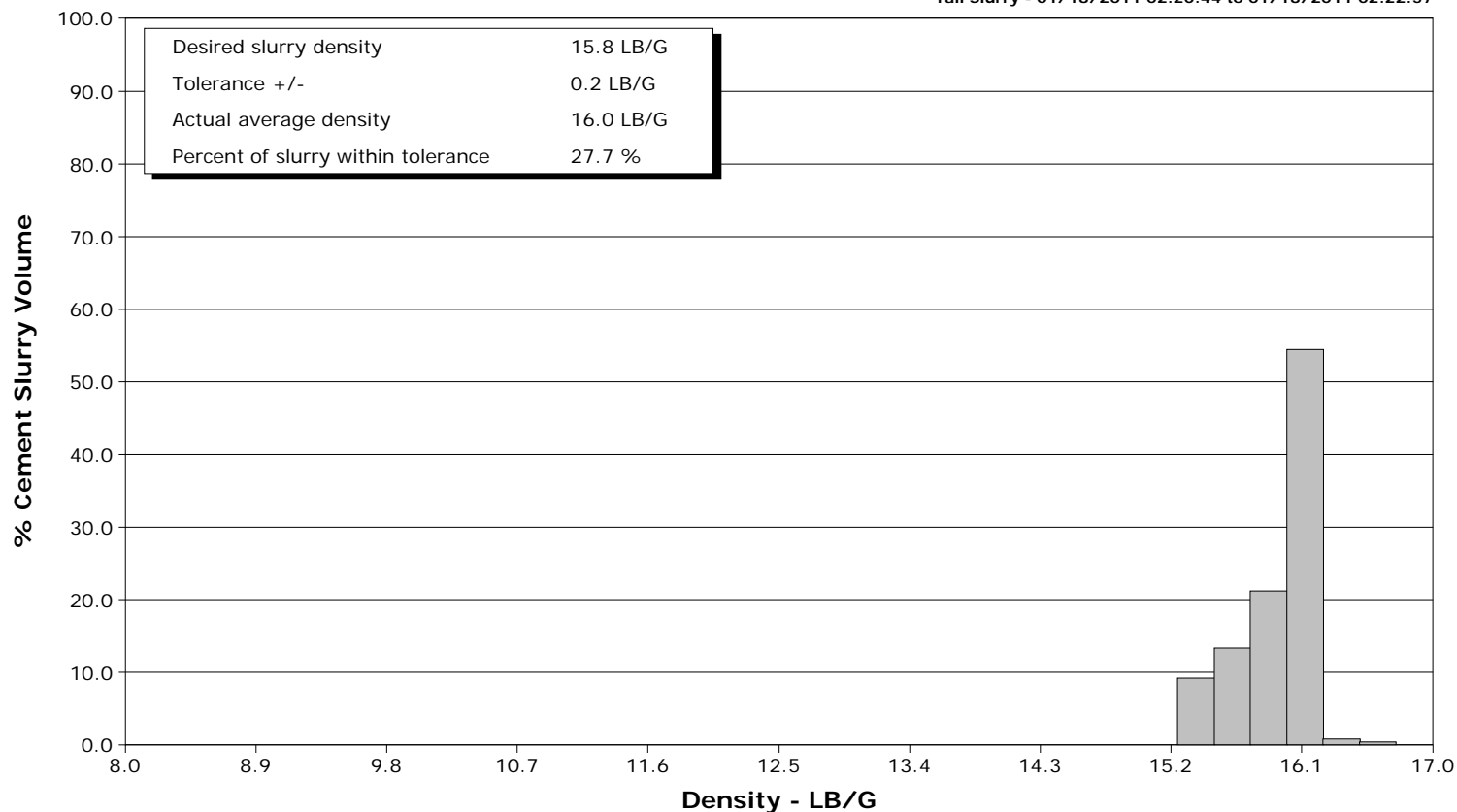
Well Benjamin Federal 28 13B1
Field Mamm Creek
Engineer Dustin C Krueger
Country United States

Client Encana Oil Gas
SIR No. 000470685
Job Type 9 5/8 1440ft Surface
Job Date 01-17-2011

Lead Slurry - 01/18/2011 01:59:38 to 01/18/2011 02:13:39



Tail Slurry - 01/18/2011 02:20:44 to 01/18/2011 02:22:57



Well			Field	Job Start	Customer	Job Number
Mamm Federal 28 13B1 Benjamin Federal 28 13B1			Mamm Creek	Jan/17/2011	Encana Oil & Gas	000470685
Date	Time 24-hr clock	Treating Pressure PSI	Flow Rate B/M	Density LB/G	Volume BBL	Message
01/18/2011	01:54:25	328	6.5	8.34	12.0	
01/18/2011	01:55:06	306	6.5	8.29	16.4	
01/18/2011	01:57:36	336	6.5	8.33	32.6	
01/18/2011	01:58:22					End Spacer
01/18/2011	01:58:22	451	6.6	12.35	37.6	
01/18/2011	01:58:24					Start Cement Slurry
01/18/2011	01:58:24	442	6.6	12.35	37.8	
01/18/2011	01:58:26					Start Mixing Scav Slurry
01/18/2011	01:58:26	446	6.6	12.35	38.1	
01/18/2011	01:58:42					Reset Total, Vol = 39.81 bbl
01/18/2011	01:58:42	434	6.6	12.39	39.8	
01/18/2011	01:59:36					End Scavenger Slurry
01/18/2011	01:59:36	378	6.5	12.55	45.7	
01/18/2011	01:59:38					Start Mixing Lead Slurry
01/18/2011	01:59:38	425	6.5	12.56	45.9	
01/18/2011	01:59:40					114 bbl "304 sks" 12.5 ppg cement
01/18/2011	01:59:40	394	6.6	12.56	46.2	
01/18/2011	01:59:41					mudscale test
01/18/2011	01:59:41					lead 12.5 ppg
01/18/2011	01:59:41	414	6.6	12.57	46.3	
01/18/2011	01:59:42					good returns
01/18/2011	01:59:42	390	6.6	12.57	46.4	
01/18/2011	02:00:06	421	6.5	12.58	49.0	
01/18/2011	02:02:36	358	6.5	12.62	65.4	
01/18/2011	02:05:06	363	6.6	12.52	81.8	
01/18/2011	02:07:36	353	6.6	12.53	98.2	
01/18/2011	02:10:06	354	6.6	12.60	114.6	
01/18/2011	02:12:36	348	6.6	12.59	131.0	
01/18/2011	02:13:39					End Lead Slurry
01/18/2011	02:13:39	341	6.6	12.16	137.9	
01/18/2011	02:13:41					Start Mixing Scav Slurry
01/18/2011	02:13:41	337	6.6	12.20	138.1	
01/18/2011	02:15:06	82	3.1	12.81	146.0	
01/18/2011	02:15:12					Reset Total, Vol = 106.52 bbl
01/18/2011	02:15:12	80	3.1	12.60	146.3	
01/18/2011	02:17:36	7	0.0	17.60	150.1	
01/18/2011	02:20:06	734	6.4	16.62	160.3	
01/18/2011	02:20:43					End Scavenger Slurry
01/18/2011	02:20:43	596	6.4	16.30	164.2	
01/18/2011	02:20:44					Start Mixing Tail Slurry
01/18/2011	02:20:44	628	6.4	16.30	164.3	
01/18/2011	02:20:47					31 bbl "149 sks" 15.8 ppg cement
01/18/2011	02:20:47					mudscale test
01/18/2011	02:20:47	567	6.4	15.95	164.6	
01/18/2011	02:20:48					tail 15.8 ppg
01/18/2011	02:20:48					Good returns
01/18/2011	02:20:48	639	6.4	15.91	164.7	
01/18/2011	02:22:36	530	6.4	15.81	176.2	
01/18/2011	02:22:57					End Tail Slurry
01/18/2011	02:22:57	8	0.0	25.00	177.3	
01/18/2011	02:22:59					End Cement Slurry
01/18/2011	02:22:59	3	0.0	25.00	177.3	
01/18/2011	02:23:20					Drop Top Plug
01/18/2011	02:23:20	-14	0.0	0.96	177.3	

Well			Field	Job Start	Customer	Job Number
amin Federal 28 13B1 Benjamin Federal 28 13B1			Mamm Creek	Jan/17/2011	Encana Oil & Gas	000470685
Date	Time 24-hr clock	Treating Pressure PSI	Flow Rate B/M	Density LB/G	Volume BBL	Message
01/18/2011	02:23:25	-15	0.0	0.03	177.3	
01/18/2011	02:25:06	-20	0.0	16.11	177.3	
01/18/2011	02:25:31					Reset Total, Vol = 30.99 bbl
01/18/2011	02:25:31	-20	0.0	16.07	177.3	
01/18/2011	02:27:36	165	4.0	8.91	179.8	
01/18/2011	02:29:33					drop top plug
01/18/2011	02:29:33	280	6.6	8.99	189.0	
01/18/2011	02:30:06	261	6.5	8.94	192.6	
01/18/2011	02:30:26					107.8 bbl displacement
01/18/2011	02:30:26	229	7.0	8.50	194.9	
01/18/2011	02:30:39					good returns
01/18/2011	02:30:39	238	6.6	8.57	196.3	
01/18/2011	02:32:36	242	7.6	7.35	209.6	
01/18/2011	02:35:06	260	6.6	8.35	226.2	
01/18/2011	02:37:36	326	6.9	7.51	243.0	
01/18/2011	02:39:25					cement to surface @ 75 bbl away
01/18/2011	02:39:25	378	6.5	8.32	254.9	
01/18/2011	02:39:54					32 bbl cement to surface
01/18/2011	02:39:54	407	6.5	8.32	258.0	
01/18/2011	02:40:06	410	6.5	8.32	259.3	
01/18/2011	02:42:36	497	6.5	8.31	275.9	
01/18/2011	02:45:06	352	2.0	8.33	286.0	
01/18/2011	02:47:36	354	2.0	8.33	290.9	
01/18/2011	02:48:57					Bump Top Plug
01/18/2011	02:48:57	1365	0.1	8.33	293.5	
01/18/2011	02:48:58					End Displacement
01/18/2011	02:48:58	1364	0.0	8.33	293.5	
01/18/2011	02:49:58					.5bbl back
01/18/2011	02:49:58					float held
01/18/2011	02:49:58	1330	0.0	8.33	293.5	
01/18/2011	02:50:06	1329	0.0	8.33	293.5	
01/18/2011	02:52:36	-25	0.0	8.34	293.5	
01/18/2011	02:52:40					End Job
01/18/2011	02:52:40	-26	0.0	8.34	293.5	

Post Job Summary

Average Pump Rates, bbl/min					Volume of Fluid Injected, bbl							
Slurry 4.1	N2	Mud 0.0	Maximum Rate 8.1		Total Slurry 145.0	Mud 0.0	Spacer 20.0	N2				
Treating Pressure Summary, psi					Breakdown Fluid							
Maximum 3000	Final 380	Average 150	Bump Plug to 1354	Breakdown	Type FreshWater		Volume 314.0 bbl		Density 8.34 lb/gal			
Avg. N2 Percent		Designed Slurry Volume 145.0 bbl		Displacement 107.0 bbl		Mix Water Temp 85 degF		Cement Circulated to Surface?		<input checked="" type="checkbox"/>	Volume 32.0 bbl	
								Washed Thru Perfs		<input type="checkbox"/>	To	
Customer or Authorized Representative Mike Durkin				Schlumberger Supervisor Dustin C Krueger				Circulation Lost		<input type="checkbox"/>	Job Completed	<input checked="" type="checkbox"/>
								-			-	