

LEGEND

EnCana Oil & Gas (USA) Inc.

PC-28 Well Pad

SECTION 28, T7S, R95W, 6th, P.M.
GARFIELD COUNTY, COLORADO

TOPO B

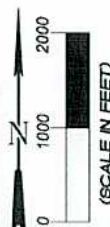
PROJECT NUMBER
10-04-63

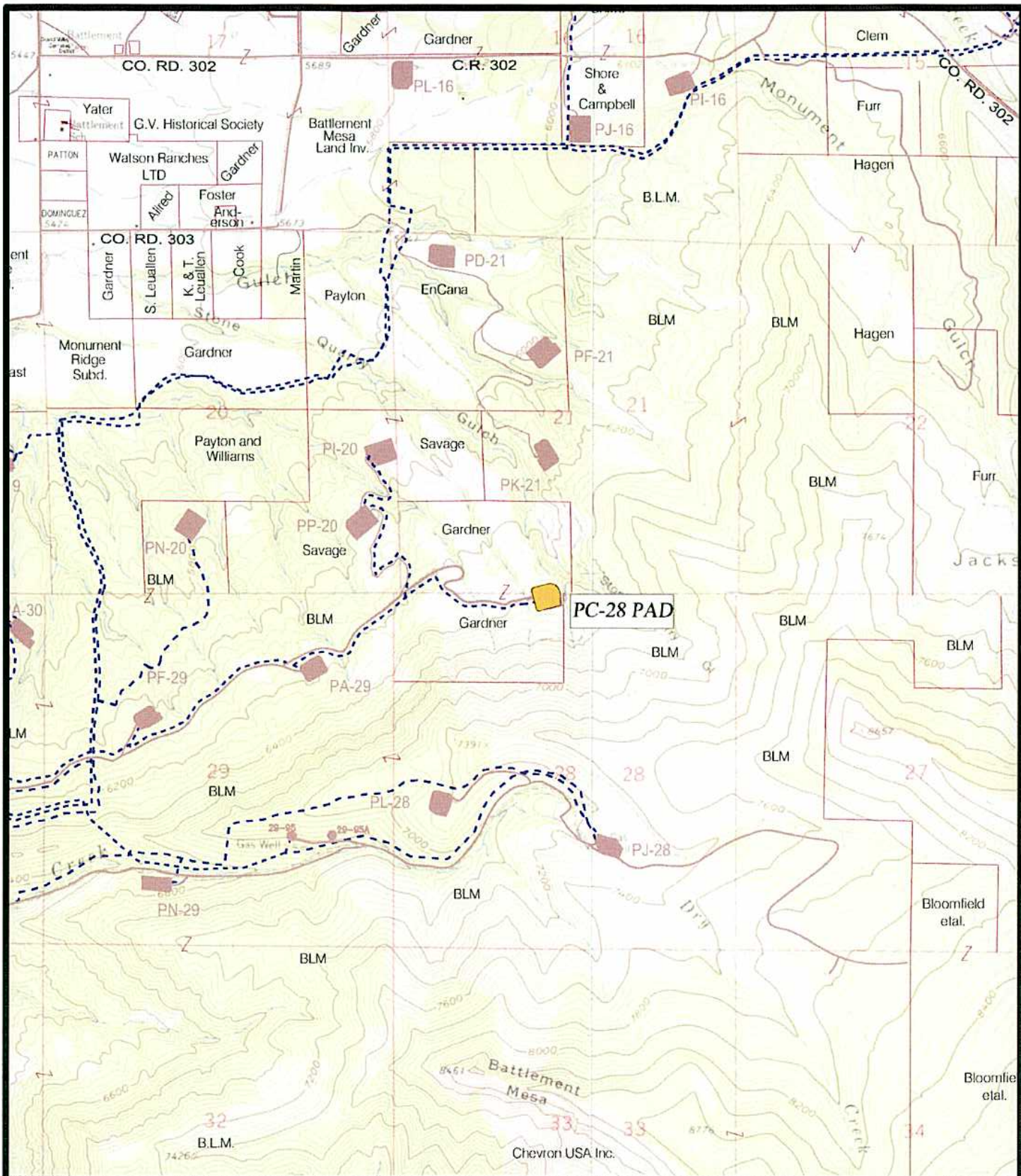
DATE: 8/17/10
SCALE: 1" = 2000'

9
of 10






Wasatch Surveying Associates
906 Main Street Evanston, Wyoming 82930
Phone No. (307) 789-4545 Fax 307-789-5722





LEGEND

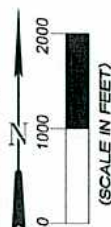
-  PC-28 WELL PAD
-  EXISTING ROAD
-  EXISTING PIPELINE

EnCana Oil & Gas (USA) Inc.

PC-28 Well Pad
SECTION 28, T7S, R95W, 6th, P.M.
GARFIELD COUNTY, COLORADO



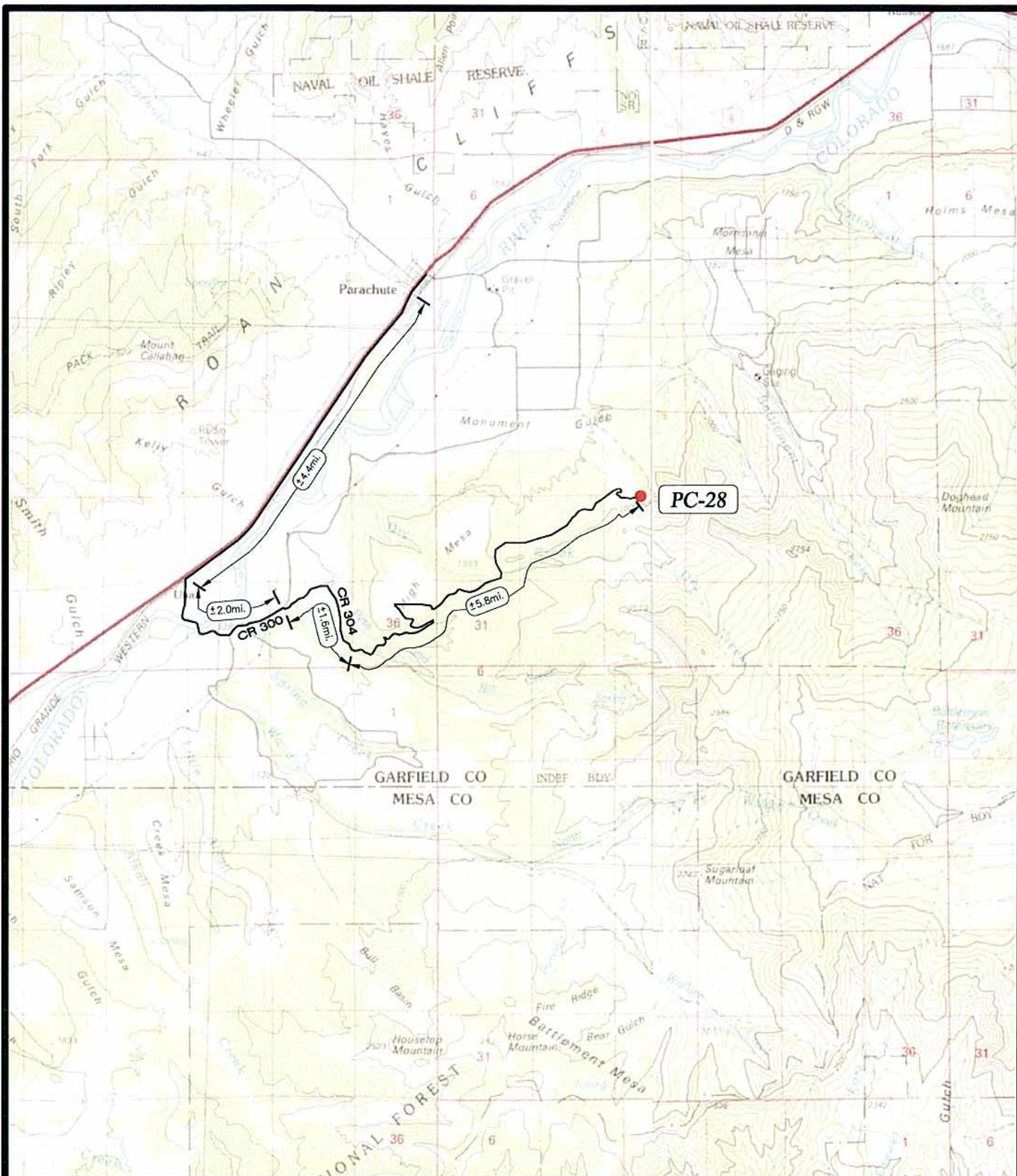
Wasatch Surveying Associates
906 Main Street Evanston, Wyoming 82930
Phone No. (307) 789-4545 Fax 307-789-5722



TOPO D

PROJECT NUMBER
10-04-63
DATE: 8/12/10
SCALE: 1" = 2000'

10
of 10



LEGEND

● EXISTING LOCATION

— EXISTING ROAD



Wasatch Surveying Associates

906 Main Street Evanston, Wyoming 82930
Phone No. (307) 789-4545 Fax 307-789-5722



EnCana Oil & Gas (USA) Inc.

PC-28 PAD
SECTION 28, T7S, R95W, 6th, P.M.
GARFIELD COUNTY, COLORADO

TOPO A

PROJECT NUMBER
10-04-63
DATE: 8/17/10
SCALE: 1:100,000

8
of 10