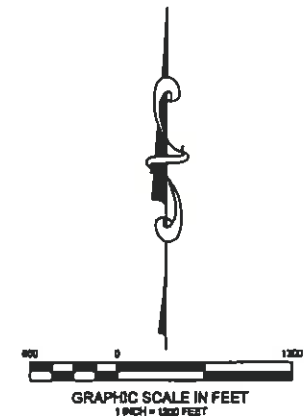
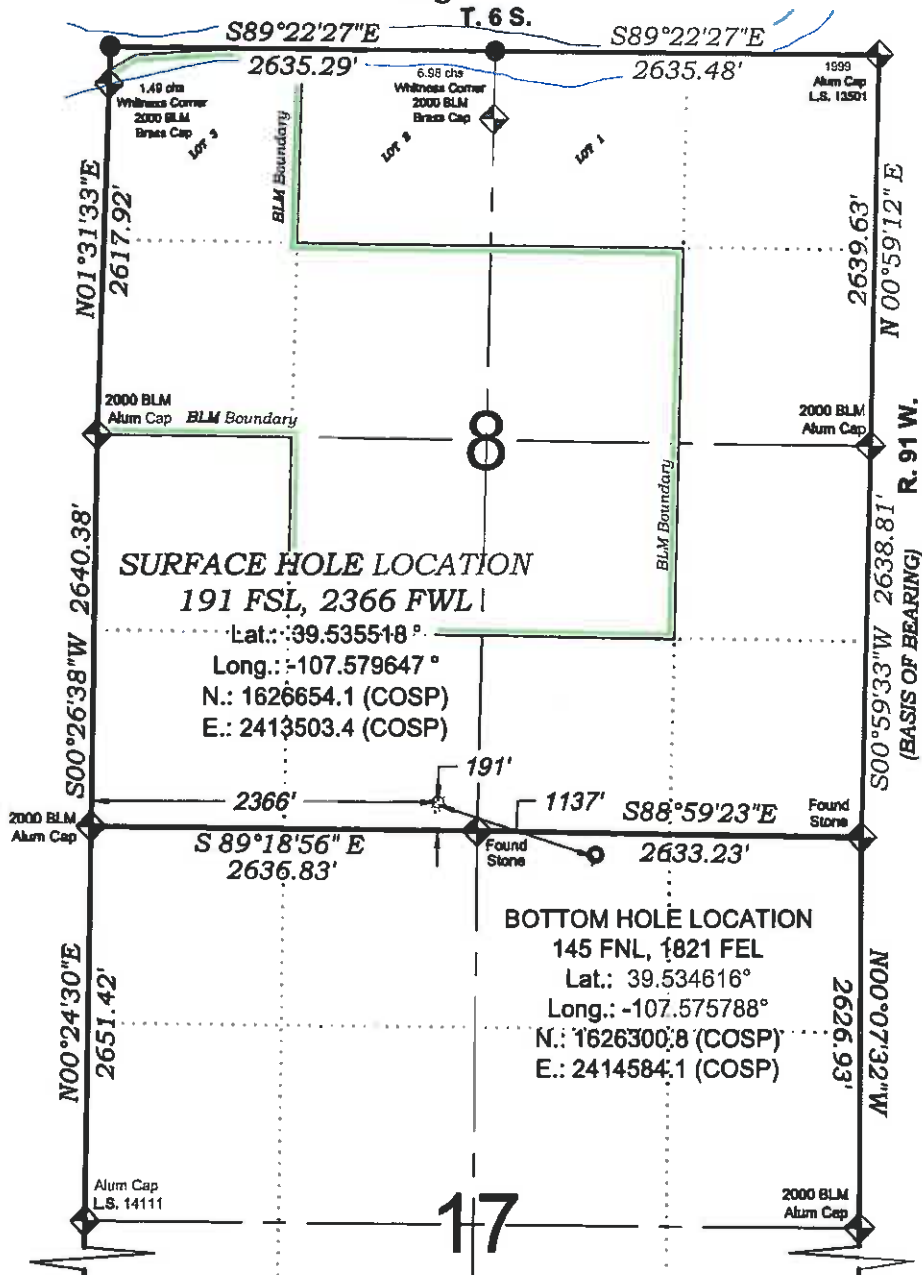


Jolley KP 31-17



THERE ARE NO VISIBLE IMPROVEMENTS WITHIN 400' OF THIS LOCATION

PROPOSED PAD ELEV.: 6526.0
EXISTING GROUND ELEV.: 6526.0

- LEGEND -

FIELD LOCATED SECTION MONUMENTS AS DESCRIBED

FIELD SURVEYED WELL LOCATION

CALCULATED BOTTOM HOLE LOCATION

CALCULATED SECTION CORNER LOCATION

SURVEYORS STATEMENT

I, MICHAEL J. LANGHORNE, A REGISTERED LAND SURVEYOR IN THE STATE OF COLORADO DO HEREBY CERTIFY THAT THE SURVEY SHOWN HEREON WAS PREPARED UNDER MY DIRECT SUPERVISION AND HAS BEEN STAKED ON THE GROUND AS SHOWN ON THE PLAT AND CHECKING THAT THIS MAP IS A TRUE REPRESENTATION THEREOF.

36572
Michael J. Langhorne

MICHAEL J. LANGHORNE, COLORADO REGISTRATION NO. 36572
FOR AND ON BEHALF OF

BOOKCLIFF SURVEY SERVICES, INC.

NOTES

- 1) ELEVATIONS BASED ON N.A.V.D. 1988 PUBLISHED COORDINATES.
- 2) LATITUDES AND LONGITUDES ARE BASE ON NAD 83, PUBLISHED COORDINATES
- 3) STATE PLANE COORDINATES ARE BASED ON COLORADO CENTRAL ZONE, U.S. SURVEY FEET.
- 4) ELEVATION MASK SET TO 15"
- 5) GPS OPERATOR J. KIRKPATRICK, OBSERVED A PDOP OF 2.52 FOR SURVEY POINT NUMBER 79728.
- 6) SURFACE AND BOTTOM HOLE LOCATIONS ARE MEASURED 90° FROM SECTION LINES.

REFERENCES

- 1) DEPENDENT RESURVEY T. 6 S., R. 91 W., 6th P.M. (CLO PLAT)
- 2) U.S.G.S. QUAD: NEW CASTLE, CO

WELL LOCATION PLAT Prepared for:

Williams. Williams Production, RMT

SE1/4 SW1/4, SECTION 8
T. 6 S., R. 91 W. of the 6th P.M.
GARFIELD COUNTY, COLORADO

REVISED: 10/5/11

SURVEY DATE: 12/14/09
MAP DATE: 6/3/11
SCALE: 1" = 1200'
PLAT: 1 of 1
PROJECT: Williams Valley

230 West Third Street
Rt. 6, Colorado 81650
Ph: (970) 625-2720
Fax: (970) 625-2199

