

# ENSIGN

## Directional

### Well Name: SRC GCC 42-10D

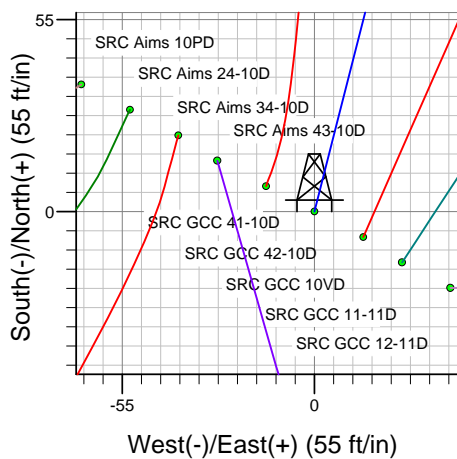
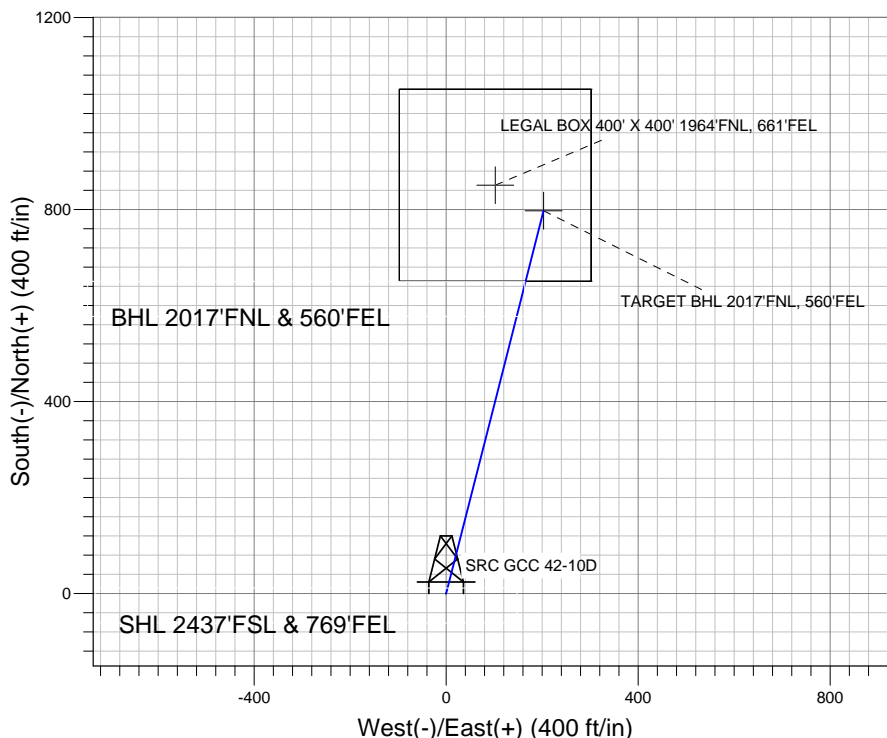
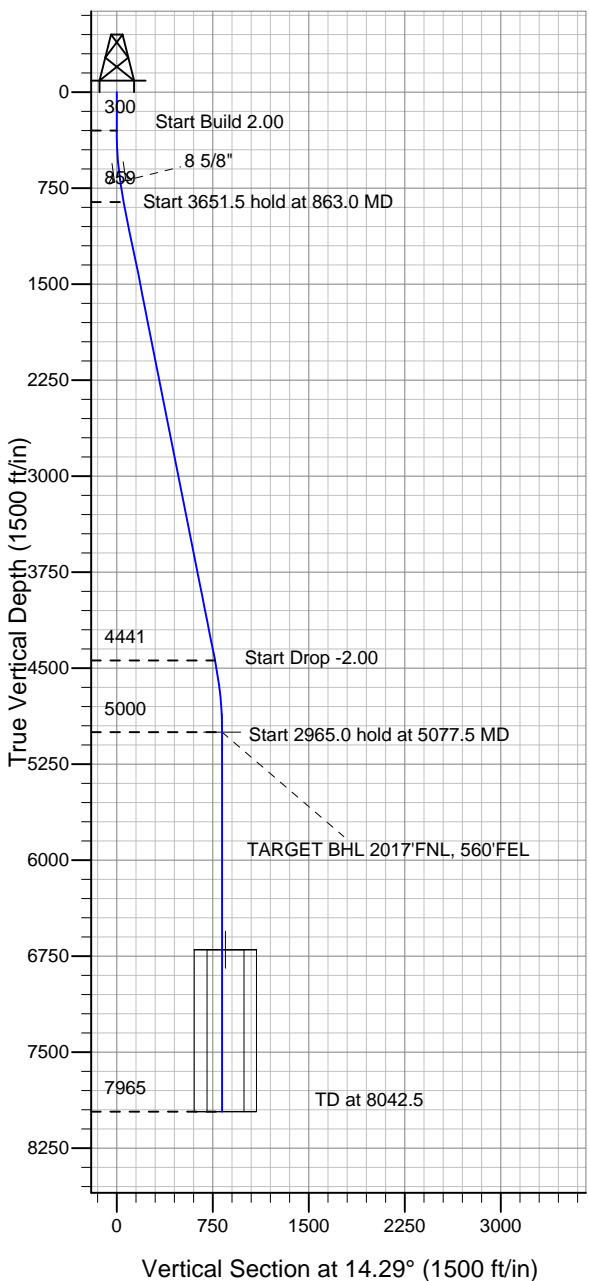
Surface Location: SRC Aims/GCC Pad Sec.10-T5N-R66W  
 North American Datum 1983 US State Plane 1983 Wyoming Western Zone

Ground Elevation: 4858.0

+N/-S	+E/-W	Northing	Easting	Latitude	Longitude	Slot
0.0	0.0	341338.60	4107545.69	40.413580	-104.759050	

Original Well Elev WELL @ 4871.0ft (Original Well Elev)

### Synergy Resources



SRC Aims/GCC Pad Sec.10-T5N-R66W  
 SRC GCC 42-10D  
 Plan #2 (9-21-11)  
 13:44, October 05 2011



Azimuths to True North  
 Magnetic North: 8.82°

Magnetic Field  
 Strength: 53106.6snT  
 Dip Angle: 67.05°  
 Date: 10/5/2011  
 Model: IGRF2010

### WELLBORE TARGET DETAILS (LAT/LONG)

Name	TVD	+N/-S	+E/-W	Latitude	Longitude	Shape
TARGET BHL 2017'FNL, 560'FEL	5000.0	797.9	203.2	40.415770	-104.758320	Point
LEGAL BOX 400' X 400' 1964'FNL, 661'FEL	6700.0	850.8	102.2	40.415915	-104.758682	Rectangle (Sides: L400.0 W400.0)

### SECTION DETAILS

Sec	MD	Inc	Azi	TVD	+N/-S	+E/-W	DLeg	TFace	VSec	Target
1	0.0	0.00	0.00	0.0	0.0	0.0	0.00	0.00	0.0	
2	300.0	0.00	0.00	300.0	0.0	0.0	0.00	0.00	0.0	
3	863.0	11.26	14.29	859.4	53.4	13.6	2.00	14.29	55.2	
4	4514.5	11.26	14.29	4440.6	744.4	189.6	0.00	0.00	768.2	
5	5077.5	0.00	0.00	5000.0	797.9	203.2	2.00	180.00	823.3	TARGET BHL 2017'FNL, 560'FEL
6	8042.5	0.00	0.00	7965.0	797.9	203.2	0.00	0.00	823.3	



## **Directional**

### **Synergy Resources**

**SEC.10-T5N-R66W**

**SRC Aims/GCC Pad Sec.10-T5N-R66W**

**SRC GCC 42-10D**

**Wellbore #1**

**Plan: Plan #2 (9-21-11)**

### **Standard Planning Report**

**05 October, 2011**

Plan Sections										
Measured Depth (ft)	Inclination (°)	Azimuth (°)	Vertical Depth (ft)	+N/-S (ft)	+E/-W (ft)	Dogleg Rate (°/100ft)	Build Rate (°/100ft)	Turn Rate (°/100ft)	TFO (°)	Target
0.0	0.00	0.00	0.0	0.0	0.0	0.00	0.00	0.00	0.00	
300.0	0.00	0.00	300.0	0.0	0.0	0.00	0.00	0.00	0.00	
863.0	11.26	14.29	859.4	53.4	13.6	2.00	2.00	0.00	14.29	
4,514.5	11.26	14.29	4,440.6	744.4	189.6	0.00	0.00	0.00	0.00	
5,077.5	0.00	0.00	5,000.0	797.9	203.2	2.00	-2.00	0.00	180.00	TARGET BHL 2017
8,042.5	0.00	0.00	7,965.0	797.9	203.2	0.00	0.00	0.00	0.00	

<b>Database:</b>	Landmark	<b>Local Co-ordinate Reference:</b>	Well SRC GCC 42-10D
<b>Company:</b>	Synergy Resources	<b>TVD Reference:</b>	WELL @ 4871.0ft (Original Well Elev)
<b>Project:</b>	SEC.10-T5N-R66W	<b>MD Reference:</b>	WELL @ 4871.0ft (Original Well Elev)
<b>Site:</b>	SRC Aims/GCC Pad Sec.10-T5N-R66W	<b>North Reference:</b>	True
<b>Well:</b>	SRC GCC 42-10D	<b>Survey Calculation Method:</b>	Minimum Curvature
<b>Wellbore:</b>	Wellbore #1		
<b>Design:</b>	Plan #2 (9-21-11)		

Planned Survey									
Measured Depth (ft)	Inclination (°)	Azimuth (°)	Vertical Depth (ft)	+N/-S (ft)	+E/-W (ft)	Vertical Section (ft)	Dogleg Rate (°/100ft)	Build Rate (°/100ft)	Turn Rate (°/100ft)
0.0	0.00	0.00	0.0	0.0	0.0	0.0	0.00	0.00	0.00
40.0	0.00	0.00	40.0	0.0	0.0	0.0	0.00	0.00	0.00
80.0	0.00	0.00	80.0	0.0	0.0	0.0	0.00	0.00	0.00
120.0	0.00	0.00	120.0	0.0	0.0	0.0	0.00	0.00	0.00
160.0	0.00	0.00	160.0	0.0	0.0	0.0	0.00	0.00	0.00
200.0	0.00	0.00	200.0	0.0	0.0	0.0	0.00	0.00	0.00
240.0	0.00	0.00	240.0	0.0	0.0	0.0	0.00	0.00	0.00
280.0	0.00	0.00	280.0	0.0	0.0	0.0	0.00	0.00	0.00
300.0	0.00	0.00	300.0	0.0	0.0	0.0	0.00	0.00	0.00
320.0	0.40	14.29	320.0	0.1	0.0	0.1	2.00	2.00	0.00
360.0	1.20	14.29	360.0	0.6	0.2	0.6	2.00	2.00	0.00
400.0	2.00	14.29	400.0	1.7	0.4	1.7	2.00	2.00	0.00
440.0	2.80	14.29	439.9	3.3	0.8	3.4	2.00	2.00	0.00
480.0	3.60	14.29	479.9	5.5	1.4	5.7	2.00	2.00	0.00
520.0	4.40	14.29	519.8	8.2	2.1	8.4	2.00	2.00	0.00
560.0	5.20	14.29	559.6	11.4	2.9	11.8	2.00	2.00	0.00
600.0	6.00	14.29	599.5	15.2	3.9	15.7	2.00	2.00	0.00
640.0	6.80	14.29	639.2	19.5	5.0	20.2	2.00	2.00	0.00
680.0	7.60	14.29	678.9	24.4	6.2	25.2	2.00	2.00	0.00
701.3	8.03	14.29	700.0	27.2	6.9	28.1	2.00	2.00	0.00
8 5/8"									
720.0	8.40	14.29	718.5	29.8	7.6	30.7	2.00	2.00	0.00
760.0	9.20	14.29	758.0	35.7	9.1	36.9	2.00	2.00	0.00
800.0	10.00	14.29	797.5	42.2	10.7	43.5	2.00	2.00	0.00
840.0	10.80	14.29	836.8	49.2	12.5	50.7	2.00	2.00	0.00
863.0	11.26	14.29	859.4	53.4	13.6	55.2	2.00	2.00	0.00
880.0	11.26	14.29	876.1	56.7	14.4	58.5	0.00	0.00	0.00
920.0	11.26	14.29	915.3	64.2	16.4	66.3	0.00	0.00	0.00
960.0	11.26	14.29	954.5	71.8	18.3	74.1	0.00	0.00	0.00
1,000.0	11.26	14.29	993.7	79.4	20.2	81.9	0.00	0.00	0.00
1,040.0	11.26	14.29	1,033.0	86.9	22.1	89.7	0.00	0.00	0.00
1,080.0	11.26	14.29	1,072.2	94.5	24.1	97.5	0.00	0.00	0.00
1,120.0	11.26	14.29	1,111.4	102.1	26.0	105.3	0.00	0.00	0.00
1,160.0	11.26	14.29	1,150.7	109.6	27.9	113.1	0.00	0.00	0.00
1,200.0	11.26	14.29	1,189.9	117.2	29.8	121.0	0.00	0.00	0.00
1,240.0	11.26	14.29	1,229.1	124.8	31.8	128.8	0.00	0.00	0.00
1,280.0	11.26	14.29	1,268.4	132.3	33.7	136.6	0.00	0.00	0.00
1,320.0	11.26	14.29	1,307.6	139.9	35.6	144.4	0.00	0.00	0.00
1,360.0	11.26	14.29	1,346.8	147.5	37.6	152.2	0.00	0.00	0.00
1,400.0	11.26	14.29	1,386.0	155.1	39.5	160.0	0.00	0.00	0.00
1,440.0	11.26	14.29	1,425.3	162.6	41.4	167.8	0.00	0.00	0.00
1,480.0	11.26	14.29	1,464.5	170.2	43.3	175.6	0.00	0.00	0.00
1,520.0	11.26	14.29	1,503.7	177.8	45.3	183.4	0.00	0.00	0.00
1,560.0	11.26	14.29	1,543.0	185.3	47.2	191.3	0.00	0.00	0.00
1,600.0	11.26	14.29	1,582.2	192.9	49.1	199.1	0.00	0.00	0.00
1,640.0	11.26	14.29	1,621.4	200.5	51.1	206.9	0.00	0.00	0.00
1,680.0	11.26	14.29	1,660.7	208.0	53.0	214.7	0.00	0.00	0.00
1,720.0	11.26	14.29	1,699.9	215.6	54.9	222.5	0.00	0.00	0.00
1,760.0	11.26	14.29	1,739.1	223.2	56.8	230.3	0.00	0.00	0.00
1,800.0	11.26	14.29	1,778.3	230.8	58.8	238.1	0.00	0.00	0.00
1,840.0	11.26	14.29	1,817.6	238.3	60.7	245.9	0.00	0.00	0.00
1,880.0	11.26	14.29	1,856.8	245.9	62.6	253.7	0.00	0.00	0.00
1,920.0	11.26	14.29	1,896.0	253.5	64.5	261.5	0.00	0.00	0.00
1,960.0	11.26	14.29	1,935.3	261.0	66.5	269.4	0.00	0.00	0.00

<b>Database:</b>	Landmark	<b>Local Co-ordinate Reference:</b>	Well SRC GCC 42-10D
<b>Company:</b>	Synergy Resources	<b>TVD Reference:</b>	WELL @ 4871.0ft (Original Well Elev)
<b>Project:</b>	SEC.10-T5N-R66W	<b>MD Reference:</b>	WELL @ 4871.0ft (Original Well Elev)
<b>Site:</b>	SRC Aims/GCC Pad Sec.10-T5N-R66W	<b>North Reference:</b>	True
<b>Well:</b>	SRC GCC 42-10D	<b>Survey Calculation Method:</b>	Minimum Curvature
<b>Wellbore:</b>	Wellbore #1		
<b>Design:</b>	Plan #2 (9-21-11)		

Planned Survey									
Measured Depth (ft)	Inclination (°)	Azimuth (°)	Vertical Depth (ft)	+N/-S (ft)	+E/-W (ft)	Vertical Section (ft)	Dogleg Rate (°/100ft)	Build Rate (°/100ft)	Turn Rate (°/100ft)
2,000.0	11.26	14.29	1,974.5	268.6	68.4	277.2	0.00	0.00	0.00
2,040.0	11.26	14.29	2,013.7	276.2	70.3	285.0	0.00	0.00	0.00
2,080.0	11.26	14.29	2,053.0	283.7	72.3	292.8	0.00	0.00	0.00
2,120.0	11.26	14.29	2,092.2	291.3	74.2	300.6	0.00	0.00	0.00
2,160.0	11.26	14.29	2,131.4	298.9	76.1	308.4	0.00	0.00	0.00
2,200.0	11.26	14.29	2,170.6	306.4	78.0	316.2	0.00	0.00	0.00
2,240.0	11.26	14.29	2,209.9	314.0	80.0	324.0	0.00	0.00	0.00
2,280.0	11.26	14.29	2,249.1	321.6	81.9	331.8	0.00	0.00	0.00
2,320.0	11.26	14.29	2,288.3	329.2	83.8	339.7	0.00	0.00	0.00
2,360.0	11.26	14.29	2,327.6	336.7	85.8	347.5	0.00	0.00	0.00
2,400.0	11.26	14.29	2,366.8	344.3	87.7	355.3	0.00	0.00	0.00
2,440.0	11.26	14.29	2,406.0	351.9	89.6	363.1	0.00	0.00	0.00
2,480.0	11.26	14.29	2,445.3	359.4	91.5	370.9	0.00	0.00	0.00
2,520.0	11.26	14.29	2,484.5	367.0	93.5	378.7	0.00	0.00	0.00
2,560.0	11.26	14.29	2,523.7	374.6	95.4	386.5	0.00	0.00	0.00
2,600.0	11.26	14.29	2,562.9	382.1	97.3	394.3	0.00	0.00	0.00
2,640.0	11.26	14.29	2,602.2	389.7	99.2	402.1	0.00	0.00	0.00
2,680.0	11.26	14.29	2,641.4	397.3	101.2	410.0	0.00	0.00	0.00
2,720.0	11.26	14.29	2,680.6	404.8	103.1	417.8	0.00	0.00	0.00
2,760.0	11.26	14.29	2,719.9	412.4	105.0	425.6	0.00	0.00	0.00
2,800.0	11.26	14.29	2,759.1	420.0	107.0	433.4	0.00	0.00	0.00
2,840.0	11.26	14.29	2,798.3	427.6	108.9	441.2	0.00	0.00	0.00
2,880.0	11.26	14.29	2,837.6	435.1	110.8	449.0	0.00	0.00	0.00
2,920.0	11.26	14.29	2,876.8	442.7	112.7	456.8	0.00	0.00	0.00
2,960.0	11.26	14.29	2,916.0	450.3	114.7	464.6	0.00	0.00	0.00
3,000.0	11.26	14.29	2,955.2	457.8	116.6	472.4	0.00	0.00	0.00
3,040.0	11.26	14.29	2,994.5	465.4	118.5	480.3	0.00	0.00	0.00
3,080.0	11.26	14.29	3,033.7	473.0	120.4	488.1	0.00	0.00	0.00
3,120.0	11.26	14.29	3,072.9	480.5	122.4	495.9	0.00	0.00	0.00
3,160.0	11.26	14.29	3,112.2	488.1	124.3	503.7	0.00	0.00	0.00
3,200.0	11.26	14.29	3,151.4	495.7	126.2	511.5	0.00	0.00	0.00
3,240.0	11.26	14.29	3,190.6	503.3	128.2	519.3	0.00	0.00	0.00
3,280.0	11.26	14.29	3,229.9	510.8	130.1	527.1	0.00	0.00	0.00
3,320.0	11.26	14.29	3,269.1	518.4	132.0	534.9	0.00	0.00	0.00
3,360.0	11.26	14.29	3,308.3	526.0	133.9	542.7	0.00	0.00	0.00
3,400.0	11.26	14.29	3,347.5	533.5	135.9	550.6	0.00	0.00	0.00
3,440.0	11.26	14.29	3,386.8	541.1	137.8	558.4	0.00	0.00	0.00
3,480.0	11.26	14.29	3,426.0	548.7	139.7	566.2	0.00	0.00	0.00
3,520.0	11.26	14.29	3,465.2	556.2	141.7	574.0	0.00	0.00	0.00
3,560.0	11.26	14.29	3,504.5	563.8	143.6	581.8	0.00	0.00	0.00
3,600.0	11.26	14.29	3,543.7	571.4	145.5	589.6	0.00	0.00	0.00
3,640.0	11.26	14.29	3,582.9	578.9	147.4	597.4	0.00	0.00	0.00
3,680.0	11.26	14.29	3,622.2	586.5	149.4	605.2	0.00	0.00	0.00
3,720.0	11.26	14.29	3,661.4	594.1	151.3	613.0	0.00	0.00	0.00
3,760.0	11.26	14.29	3,700.6	601.7	153.2	620.9	0.00	0.00	0.00
3,800.0	11.26	14.29	3,739.8	609.2	155.1	628.7	0.00	0.00	0.00
3,840.0	11.26	14.29	3,779.1	616.8	157.1	636.5	0.00	0.00	0.00
3,880.0	11.26	14.29	3,818.3	624.4	159.0	644.3	0.00	0.00	0.00
3,920.0	11.26	14.29	3,857.5	631.9	160.9	652.1	0.00	0.00	0.00
3,960.0	11.26	14.29	3,896.8	639.5	162.9	659.9	0.00	0.00	0.00
4,000.0	11.26	14.29	3,936.0	647.1	164.8	667.7	0.00	0.00	0.00
4,040.0	11.26	14.29	3,975.2	654.6	166.7	675.5	0.00	0.00	0.00
4,080.0	11.26	14.29	4,014.5	662.2	168.6	683.3	0.00	0.00	0.00
4,120.0	11.26	14.29	4,053.7	669.8	170.6	691.2	0.00	0.00	0.00

<b>Database:</b>	Landmark	<b>Local Co-ordinate Reference:</b>	Well SRC GCC 42-10D
<b>Company:</b>	Synergy Resources	<b>TVD Reference:</b>	WELL @ 4871.0ft (Original Well Elev)
<b>Project:</b>	SEC.10-T5N-R66W	<b>MD Reference:</b>	WELL @ 4871.0ft (Original Well Elev)
<b>Site:</b>	SRC Aims/GCC Pad Sec.10-T5N-R66W	<b>North Reference:</b>	True
<b>Well:</b>	SRC GCC 42-10D	<b>Survey Calculation Method:</b>	Minimum Curvature
<b>Wellbore:</b>	Wellbore #1		
<b>Design:</b>	Plan #2 (9-21-11)		

Planned Survey									
Measured Depth (ft)	Inclination (°)	Azimuth (°)	Vertical Depth (ft)	+N/-S (ft)	+E/-W (ft)	Vertical Section (ft)	Dogleg Rate (°/100ft)	Build Rate (°/100ft)	Turn Rate (°/100ft)
4,160.0	11.26	14.29	4,092.9	677.3	172.5	699.0	0.00	0.00	0.00
4,200.0	11.26	14.29	4,132.1	684.9	174.4	706.8	0.00	0.00	0.00
4,240.0	11.26	14.29	4,171.4	692.5	176.3	714.6	0.00	0.00	0.00
4,280.0	11.26	14.29	4,210.6	700.1	178.3	722.4	0.00	0.00	0.00
4,320.0	11.26	14.29	4,249.8	707.6	180.2	730.2	0.00	0.00	0.00
4,360.0	11.26	14.29	4,289.1	715.2	182.1	738.0	0.00	0.00	0.00
4,400.0	11.26	14.29	4,328.3	722.8	184.1	745.8	0.00	0.00	0.00
4,440.0	11.26	14.29	4,367.5	730.3	186.0	753.6	0.00	0.00	0.00
4,480.0	11.26	14.29	4,406.8	737.9	187.9	761.5	0.00	0.00	0.00
4,514.5	11.26	14.29	4,440.6	744.4	189.6	768.2	0.00	0.00	0.00
4,520.0	11.15	14.29	4,446.0	745.5	189.8	769.3	2.00	-2.00	0.00
4,560.0	10.35	14.29	4,485.3	752.7	191.7	776.7	2.00	-2.00	0.00
4,600.0	9.55	14.29	4,524.7	759.4	193.4	783.6	2.00	-2.00	0.00
4,640.0	8.75	14.29	4,564.2	765.6	195.0	790.0	2.00	-2.00	0.00
4,680.0	7.95	14.29	4,603.7	771.2	196.4	795.8	2.00	-2.00	0.00
4,720.0	7.15	14.29	4,643.4	776.3	197.7	801.1	2.00	-2.00	0.00
4,760.0	6.35	14.29	4,683.1	780.8	198.8	805.8	2.00	-2.00	0.00
4,800.0	5.55	14.29	4,722.9	784.9	199.9	809.9	2.00	-2.00	0.00
4,840.0	4.75	14.29	4,762.7	788.3	200.8	813.5	2.00	-2.00	0.00
4,880.0	3.95	14.29	4,802.6	791.3	201.5	816.5	2.00	-2.00	0.00
4,920.0	3.15	14.29	4,842.5	793.7	202.1	819.0	2.00	-2.00	0.00
4,960.0	2.35	14.29	4,882.5	795.5	202.6	820.9	2.00	-2.00	0.00
5,000.0	1.55	14.29	4,922.5	796.9	202.9	822.3	2.00	-2.00	0.00
5,040.0	0.75	14.29	4,962.5	797.6	203.1	823.1	2.00	-2.00	0.00
5,077.5	0.00	0.00	5,000.0	797.9	203.2	823.3	2.00	-2.00	0.00
TARGET BHL 2017'FNL, 560'FEL									
5,080.0	0.00	0.00	5,002.5	797.9	203.2	823.3	0.00	0.00	0.00
5,120.0	0.00	0.00	5,042.5	797.9	203.2	823.3	0.00	0.00	0.00
5,160.0	0.00	0.00	5,082.5	797.9	203.2	823.3	0.00	0.00	0.00
5,200.0	0.00	0.00	5,122.5	797.9	203.2	823.3	0.00	0.00	0.00
5,240.0	0.00	0.00	5,162.5	797.9	203.2	823.3	0.00	0.00	0.00
5,280.0	0.00	0.00	5,202.5	797.9	203.2	823.3	0.00	0.00	0.00
5,320.0	0.00	0.00	5,242.5	797.9	203.2	823.3	0.00	0.00	0.00
5,360.0	0.00	0.00	5,282.5	797.9	203.2	823.3	0.00	0.00	0.00
5,400.0	0.00	0.00	5,322.5	797.9	203.2	823.3	0.00	0.00	0.00
5,440.0	0.00	0.00	5,362.5	797.9	203.2	823.3	0.00	0.00	0.00
5,480.0	0.00	0.00	5,402.5	797.9	203.2	823.3	0.00	0.00	0.00
5,520.0	0.00	0.00	5,442.5	797.9	203.2	823.3	0.00	0.00	0.00
5,560.0	0.00	0.00	5,482.5	797.9	203.2	823.3	0.00	0.00	0.00
5,600.0	0.00	0.00	5,522.5	797.9	203.2	823.3	0.00	0.00	0.00
5,640.0	0.00	0.00	5,562.5	797.9	203.2	823.3	0.00	0.00	0.00
5,680.0	0.00	0.00	5,602.5	797.9	203.2	823.3	0.00	0.00	0.00
5,720.0	0.00	0.00	5,642.5	797.9	203.2	823.3	0.00	0.00	0.00
5,760.0	0.00	0.00	5,682.5	797.9	203.2	823.3	0.00	0.00	0.00
5,800.0	0.00	0.00	5,722.5	797.9	203.2	823.3	0.00	0.00	0.00
5,840.0	0.00	0.00	5,762.5	797.9	203.2	823.3	0.00	0.00	0.00
5,880.0	0.00	0.00	5,802.5	797.9	203.2	823.3	0.00	0.00	0.00
5,920.0	0.00	0.00	5,842.5	797.9	203.2	823.3	0.00	0.00	0.00
5,960.0	0.00	0.00	5,882.5	797.9	203.2	823.3	0.00	0.00	0.00
6,000.0	0.00	0.00	5,922.5	797.9	203.2	823.3	0.00	0.00	0.00
6,040.0	0.00	0.00	5,962.5	797.9	203.2	823.3	0.00	0.00	0.00
6,080.0	0.00	0.00	6,002.5	797.9	203.2	823.3	0.00	0.00	0.00
6,120.0	0.00	0.00	6,042.5	797.9	203.2	823.3	0.00	0.00	0.00
6,160.0	0.00	0.00	6,082.5	797.9	203.2	823.3	0.00	0.00	0.00

<b>Database:</b>	Landmark	<b>Local Co-ordinate Reference:</b>	Well SRC GCC 42-10D
<b>Company:</b>	Synergy Resources	<b>TVD Reference:</b>	WELL @ 4871.0ft (Original Well Elev)
<b>Project:</b>	SEC.10-T5N-R66W	<b>MD Reference:</b>	WELL @ 4871.0ft (Original Well Elev)
<b>Site:</b>	SRC Aims/GCC Pad Sec.10-T5N-R66W	<b>North Reference:</b>	True
<b>Well:</b>	SRC GCC 42-10D	<b>Survey Calculation Method:</b>	Minimum Curvature
<b>Wellbore:</b>	Wellbore #1		
<b>Design:</b>	Plan #2 (9-21-11)		

Planned Survey									
Measured Depth (ft)	Inclination (°)	Azimuth (°)	Vertical Depth (ft)	+N/-S (ft)	+E/-W (ft)	Vertical Section (ft)	Dogleg Rate (°/100ft)	Build Rate (°/100ft)	Turn Rate (°/100ft)
6,200.0	0.00	0.00	6,122.5	797.9	203.2	823.3	0.00	0.00	0.00
6,240.0	0.00	0.00	6,162.5	797.9	203.2	823.3	0.00	0.00	0.00
6,280.0	0.00	0.00	6,202.5	797.9	203.2	823.3	0.00	0.00	0.00
6,320.0	0.00	0.00	6,242.5	797.9	203.2	823.3	0.00	0.00	0.00
6,360.0	0.00	0.00	6,282.5	797.9	203.2	823.3	0.00	0.00	0.00
6,400.0	0.00	0.00	6,322.5	797.9	203.2	823.3	0.00	0.00	0.00
6,440.0	0.00	0.00	6,362.5	797.9	203.2	823.3	0.00	0.00	0.00
6,480.0	0.00	0.00	6,402.5	797.9	203.2	823.3	0.00	0.00	0.00
6,520.0	0.00	0.00	6,442.5	797.9	203.2	823.3	0.00	0.00	0.00
6,560.0	0.00	0.00	6,482.5	797.9	203.2	823.3	0.00	0.00	0.00
6,600.0	0.00	0.00	6,522.5	797.9	203.2	823.3	0.00	0.00	0.00
6,640.0	0.00	0.00	6,562.5	797.9	203.2	823.3	0.00	0.00	0.00
6,680.0	0.00	0.00	6,602.5	797.9	203.2	823.3	0.00	0.00	0.00
6,720.0	0.00	0.00	6,642.5	797.9	203.2	823.3	0.00	0.00	0.00
6,760.0	0.00	0.00	6,682.5	797.9	203.2	823.3	0.00	0.00	0.00
6,777.5	0.00	0.00	6,700.0	797.9	203.2	823.3	0.00	0.00	0.00
LEGAL BOX 400' X 400' 1964'FNL, 661'FEL									
6,800.0	0.00	0.00	6,722.5	797.9	203.2	823.3	0.00	0.00	0.00
6,840.0	0.00	0.00	6,762.5	797.9	203.2	823.3	0.00	0.00	0.00
6,880.0	0.00	0.00	6,802.5	797.9	203.2	823.3	0.00	0.00	0.00
6,920.0	0.00	0.00	6,842.5	797.9	203.2	823.3	0.00	0.00	0.00
6,960.0	0.00	0.00	6,882.5	797.9	203.2	823.3	0.00	0.00	0.00
7,000.0	0.00	0.00	6,922.5	797.9	203.2	823.3	0.00	0.00	0.00
7,040.0	0.00	0.00	6,962.5	797.9	203.2	823.3	0.00	0.00	0.00
7,080.0	0.00	0.00	7,002.5	797.9	203.2	823.3	0.00	0.00	0.00
7,120.0	0.00	0.00	7,042.5	797.9	203.2	823.3	0.00	0.00	0.00
7,160.0	0.00	0.00	7,082.5	797.9	203.2	823.3	0.00	0.00	0.00
7,200.0	0.00	0.00	7,122.5	797.9	203.2	823.3	0.00	0.00	0.00
7,240.0	0.00	0.00	7,162.5	797.9	203.2	823.3	0.00	0.00	0.00
7,280.0	0.00	0.00	7,202.5	797.9	203.2	823.3	0.00	0.00	0.00
7,320.0	0.00	0.00	7,242.5	797.9	203.2	823.3	0.00	0.00	0.00
7,360.0	0.00	0.00	7,282.5	797.9	203.2	823.3	0.00	0.00	0.00
7,400.0	0.00	0.00	7,322.5	797.9	203.2	823.3	0.00	0.00	0.00
7,440.0	0.00	0.00	7,362.5	797.9	203.2	823.3	0.00	0.00	0.00
7,480.0	0.00	0.00	7,402.5	797.9	203.2	823.3	0.00	0.00	0.00
7,520.0	0.00	0.00	7,442.5	797.9	203.2	823.3	0.00	0.00	0.00
7,560.0	0.00	0.00	7,482.5	797.9	203.2	823.3	0.00	0.00	0.00
7,600.0	0.00	0.00	7,522.5	797.9	203.2	823.3	0.00	0.00	0.00
7,640.0	0.00	0.00	7,562.5	797.9	203.2	823.3	0.00	0.00	0.00
7,680.0	0.00	0.00	7,602.5	797.9	203.2	823.3	0.00	0.00	0.00
7,720.0	0.00	0.00	7,642.5	797.9	203.2	823.3	0.00	0.00	0.00
7,760.0	0.00	0.00	7,682.5	797.9	203.2	823.3	0.00	0.00	0.00
7,800.0	0.00	0.00	7,722.5	797.9	203.2	823.3	0.00	0.00	0.00
7,840.0	0.00	0.00	7,762.5	797.9	203.2	823.3	0.00	0.00	0.00
7,880.0	0.00	0.00	7,802.5	797.9	203.2	823.3	0.00	0.00	0.00
7,920.0	0.00	0.00	7,842.5	797.9	203.2	823.3	0.00	0.00	0.00
7,960.0	0.00	0.00	7,882.5	797.9	203.2	823.3	0.00	0.00	0.00
8,000.0	0.00	0.00	7,922.5	797.9	203.2	823.3	0.00	0.00	0.00
8,040.0	0.00	0.00	7,962.5	797.9	203.2	823.3	0.00	0.00	0.00
8,042.5	0.00	0.00	7,965.0	797.9	203.2	823.3	0.00	0.00	0.00

<b>Database:</b>	Landmark	<b>Local Co-ordinate Reference:</b>	Well SRC GCC 42-10D
<b>Company:</b>	Synergy Resources	<b>TVD Reference:</b>	WELL @ 4871.0ft (Original Well Elev)
<b>Project:</b>	SEC.10-T5N-R66W	<b>MD Reference:</b>	WELL @ 4871.0ft (Original Well Elev)
<b>Site:</b>	SRC Aims/GCC Pad Sec.10-T5N-R66W	<b>North Reference:</b>	True
<b>Well:</b>	SRC GCC 42-10D	<b>Survey Calculation Method:</b>	Minimum Curvature
<b>Wellbore:</b>	Wellbore #1		
<b>Design:</b>	Plan #2 (9-21-11)		

Targets									
Target Name									
- hit/miss target	Dip Angle	Dip Dir.	TVD	+N/-S	+E/-W	Northing	Easting	Latitude	Longitude
- Shape	(°)	(°)	(ft)	(ft)	(ft)	(ft)	(ft)		
TARGET BHL 2017'F	0.00	0.00	5,000.0	797.9	203.2	342,149.26	4,107,700.79	40.415770	-104.758320
- plan hits target center									
- Point									
LEGAL BOX 400' X 400'	0.00	0.00	6,700.0	850.8	102.2	342,196.15	4,107,596.52	40.415915	-104.758682
- plan misses target center by 114.0ft at 6777.5ft MD (6700.0 TVD, 797.9 N, 203.2 E)									
- Rectangle (sides W400.0 H400.0 D1,265.0)									

Casing Points					
Measured Depth (ft)	Vertical Depth (ft)	Name	Casing Diameter (")	Hole Diameter (")	
701.3	700.0	8 5/8"	8-5/8	12-1/4	





# **Directional**

## **Synergy Resources**

**SEC.10-T5N-R66W**

**SRC Aims/GCC Pad Sec.10-T5N-R66W**

**SRC GCC 42-10D**

**Wellbore #1**

**Plan #2 (9-21-11)**

## **Anticollision Report**

**05 October, 2011**



<b>Company:</b>	Synergy Resources	<b>Local Co-ordinate Reference:</b>	Well SRC GCC 42-10D
<b>Project:</b>	SEC.10-T5N-R66W	<b>TVD Reference:</b>	WELL @ 4871.0ft (Original Well Elev)
<b>Reference Site:</b>	SRC Aims/GCC Pad Sec.10-T5N-R66W	<b>MD Reference:</b>	WELL @ 4871.0ft (Original Well Elev)
<b>Site Error:</b>	0.0ft	<b>North Reference:</b>	True
<b>Reference Well:</b>	SRC GCC 42-10D	<b>Survey Calculation Method:</b>	Minimum Curvature
<b>Well Error:</b>	0.0ft	<b>Output errors are at</b>	2.00 sigma
<b>Reference Wellbore</b>	Wellbore #1	<b>Database:</b>	Landmark
<b>Reference Design:</b>	Plan #2 (9-21-11)	<b>Offset TVD Reference:</b>	Offset Datum

Offset Design SRC Aims/GCC Pad Sec.10-T5N-R66W - SRC GCC 10VD - Wellbore #1 - Plan #2 (9-21-11)												Offset Site Error:	0.0ft
Survey Program: 0-MWD												Offset Well Error:	0.0ft
Reference		Offset		Semi Major Axis			Distance						Warning
Measured Depth (ft)	Vertical Depth (ft)	Measured Depth (ft)	Vertical Depth (ft)	Reference (ft)	Offset (ft)	Highside Toolface (°)	Offset Wellbore Centre +N/-S (ft)	+E/-W (ft)	Between Centres (ft)	Between Ellipses (ft)	Minimum Separation (ft)	Separation Factor	
2,100.0	2,072.6	2,091.6	2,028.4	7.1	8.9	36.36	370.5	180.6	142.7	130.6	12.06	11.827	
2,200.0	2,170.6	2,190.3	2,120.9	7.5	9.6	34.76	401.9	194.4	158.5	145.8	12.63	12.541	
2,300.0	2,268.7	2,288.9	2,213.5	7.9	10.2	33.44	433.2	208.2	174.3	161.1	13.21	13.193	
2,400.0	2,366.8	2,387.6	2,306.0	8.4	10.9	32.35	464.6	222.0	190.3	176.5	13.80	13.787	
2,500.0	2,464.9	2,486.3	2,398.5	8.8	11.6	31.43	495.9	235.8	206.3	191.9	14.40	14.331	
2,600.0	2,562.9	2,584.9	2,491.0	9.2	12.2	30.63	527.2	249.7	222.3	207.4	14.99	14.830	
2,700.0	2,661.0	2,683.6	2,583.5	9.6	12.9	29.95	558.6	263.5	238.4	222.8	15.60	15.289	
2,800.0	2,759.1	2,782.2	2,676.1	10.0	13.6	29.35	589.9	277.3	254.6	238.4	16.20	15.712	
2,900.0	2,857.2	2,880.9	2,768.6	10.5	14.2	28.83	621.3	291.1	270.7	253.9	16.81	16.104	
3,000.0	2,955.2	2,979.6	2,861.1	10.9	14.9	28.36	652.6	304.9	286.9	269.4	17.42	16.467	
3,100.0	3,053.3	3,078.2	2,953.6	11.3	15.6	27.94	684.0	318.8	303.0	285.0	18.03	16.804	
3,200.0	3,151.4	3,176.9	3,046.1	11.7	16.3	27.57	715.3	332.6	319.2	300.6	18.65	17.119	
3,300.0	3,249.5	3,275.5	3,138.7	12.2	16.9	27.23	746.7	346.4	335.4	316.2	19.26	17.412	
3,400.0	3,347.5	3,374.2	3,231.2	12.6	17.6	26.92	778.0	360.2	351.6	331.8	19.88	17.687	
3,500.0	3,445.6	3,472.9	3,323.7	13.0	18.3	26.64	809.4	374.1	367.9	347.4	20.50	17.945	
3,600.0	3,543.7	3,571.5	3,416.2	13.4	19.0	26.38	840.7	387.9	384.1	363.0	21.12	18.186	
3,700.0	3,641.8	3,670.2	3,508.8	13.8	19.6	26.14	872.1	401.7	400.3	378.6	21.74	18.414	
3,800.0	3,739.8	3,768.8	3,601.3	14.3	20.3	25.93	903.4	415.5	416.6	394.2	22.36	18.629	
3,900.0	3,837.9	3,867.5	3,693.8	14.7	21.0	25.73	934.8	429.3	432.8	409.8	22.98	18.831	
4,000.0	3,936.0	3,966.2	3,786.3	15.1	21.7	25.54	966.1	443.2	449.1	425.5	23.61	19.023	
4,100.0	4,034.1	4,064.8	3,878.8	15.5	22.3	25.36	997.4	457.0	465.3	441.1	24.23	19.204	
4,200.0	4,132.1	4,163.5	3,971.4	16.0	23.0	25.20	1,028.8	470.8	481.6	456.8	24.86	19.376	
4,300.0	4,230.2	4,262.1	4,063.9	16.4	23.7	25.05	1,060.1	484.6	497.9	472.4	25.48	19.539	
4,400.0	4,328.3	4,360.8	4,156.4	16.8	24.4	24.91	1,091.5	498.4	514.1	488.0	26.11	19.695	
4,500.0	4,426.4	4,459.5	4,248.9	17.2	25.1	24.78	1,122.8	512.3	530.4	503.7	26.73	19.842	
4,514.5	4,440.6	4,473.8	4,262.3	17.3	25.2	24.76	1,127.4	514.3	532.8	506.0	26.82	19.863	
4,600.0	4,524.7	4,557.9	4,341.2	17.6	25.7	24.72	1,154.1	526.1	547.8	520.5	27.30	20.070	
4,700.0	4,623.6	4,655.7	4,433.0	17.9	26.4	24.58	1,185.2	539.8	568.3	540.6	27.76	20.474	
4,800.0	4,722.9	4,752.8	4,524.0	18.1	27.1	24.34	1,216.0	553.4	592.0	563.8	28.15	21.027	
4,900.0	4,822.6	4,849.0	4,614.2	18.3	27.7	24.03	1,246.6	566.8	618.7	590.2	28.48	21.723	
5,000.0	4,922.5	4,944.2	4,703.5	18.5	28.4	23.66	1,276.8	580.2	648.6	619.8	28.75	22.561	
5,077.5	5,000.0	5,017.3	4,772.0	18.6	28.9	37.63	1,300.1	590.4	673.9	645.0	28.91	23.308	
5,100.0	5,022.5	5,038.3	4,791.8	18.6	29.0	37.48	1,306.8	593.4	681.5	652.5	28.98	23.515	
5,200.0	5,122.5	5,132.1	4,879.7	18.7	29.7	36.82	1,336.6	606.5	715.4	686.1	29.32	24.402	
5,300.0	5,222.5	5,248.8	4,989.6	18.9	30.3	36.11	1,372.4	622.3	748.3	718.6	29.68	25.212	
5,400.0	5,322.5	5,378.0	5,113.0	19.0	30.9	35.48	1,407.5	637.8	777.4	747.3	30.07	25.855	
5,500.0	5,422.5	5,510.7	5,241.4	19.1	31.5	34.99	1,438.1	651.3	802.1	771.7	30.47	26.326	
5,600.0	5,522.5	5,646.3	5,374.1	19.2	32.0	34.60	1,463.8	662.6	822.5	791.6	30.88	26.635	
5,700.0	5,622.5	5,784.4	5,510.3	19.4	32.4	34.32	1,483.9	671.5	838.2	806.9	31.29	26.788	
5,800.0	5,722.5	5,924.3	5,649.4	19.5	32.7	34.12	1,498.3	677.8	849.2	817.5	31.69	26.794	
5,900.0	5,822.5	6,065.4	5,790.2	19.7	32.9	34.02	1,506.4	681.4	855.4	823.3	32.08	26.661	
6,000.0	5,922.5	6,197.7	5,922.5	19.8	33.0	33.99	1,508.3	682.2	856.8	824.4	32.45	26.403	
6,100.0	6,022.5	6,297.7	6,022.5	19.9	33.1	33.99	1,508.3	682.2	856.8	824.1	32.80	26.127	
6,200.0	6,122.5	6,397.7	6,122.5	20.1	33.2	33.99	1,508.3	682.2	856.8	823.7	33.14	25.855	
6,300.0	6,222.5	6,497.7	6,222.5	20.2	33.3	33.99	1,508.3	682.2	856.8	823.4	33.49	25.586	
6,400.0	6,322.5	6,597.7	6,322.5	20.4	33.4	33.99	1,508.3	682.2	856.8	823.0	33.84	25.321	
6,500.0	6,422.5	6,697.7	6,422.5	20.5	33.5	33.99	1,508.3	682.2	856.8	822.7	34.19	25.060	
6,600.0	6,522.5	6,797.7	6,522.5	20.7	33.6	33.99	1,508.3	682.2	856.8	822.3	34.55	24.802	
6,700.0	6,622.5	6,897.7	6,622.5	20.8	33.6	33.99	1,508.3	682.2	856.8	821.9	34.90	24.548	
6,800.0	6,722.5	6,997.7	6,722.5	21.0	33.7	33.99	1,508.3	682.2	856.8	821.6	35.26	24.299	
6,900.0	6,822.5	7,097.7	6,822.5	21.1	33.8	33.99	1,508.3	682.2	856.8	821.2	35.62	24.052	
7,000.0	6,922.5	7,197.7	6,922.5	21.3	33.9	33.99	1,508.3	682.2	856.8	820.9	35.99	23.810	

CC - Min centre to center distance or convergent point, SF - min separation factor, ES - min ellipse separation

<b>Company:</b>	Synergy Resources	<b>Local Co-ordinate Reference:</b>	Well SRC GCC 42-10D
<b>Project:</b>	SEC.10-T5N-R66W	<b>TVD Reference:</b>	WELL @ 4871.0ft (Original Well Elev)
<b>Reference Site:</b>	SRC Aims/GCC Pad Sec.10-T5N-R66W	<b>MD Reference:</b>	WELL @ 4871.0ft (Original Well Elev)
<b>Site Error:</b>	0.0ft	<b>North Reference:</b>	True
<b>Reference Well:</b>	SRC GCC 42-10D	<b>Survey Calculation Method:</b>	Minimum Curvature
<b>Well Error:</b>	0.0ft	<b>Output errors are at</b>	2.00 sigma
<b>Reference Wellbore</b>	Wellbore #1	<b>Database:</b>	Landmark
<b>Reference Design:</b>	Plan #2 (9-21-11)	<b>Offset TVD Reference:</b>	Offset Datum

<b>Offset Design</b>												<b>Offset Site Error:</b>	0.0 ft
SRC Aims/GCC Pad Sec.10-T5N-R66W - SRC GCC 10VD - Wellbore #1 - Plan #2 (9-21-11)												<b>Offset Well Error:</b>	0.0 ft
Survey Program: 0-MWD													
Reference		Offset		Semi Major Axis			Distance						
Measured Depth (ft)	Vertical Depth (ft)	Measured Depth (ft)	Vertical Depth (ft)	Reference (ft)	Offset (ft)	Highside Toolface (°)	Offset Wellbore Centre +N/-S (ft)	+E/-W (ft)	Between Centres (ft)	Between Ellipses (ft)	Minimum Separation (ft)	Separation Factor	Warning
7,100.0	7,022.5	7,297.7	7,022.5	21.4	34.0	33.99	1,508.3	682.2	856.8	820.5	36.35	23.571	
7,200.0	7,122.5	7,397.7	7,122.5	21.6	34.1	33.99	1,508.3	682.2	856.8	820.1	36.72	23.336	
7,300.0	7,222.5	7,497.7	7,222.5	21.7	34.2	33.99	1,508.3	682.2	856.8	819.8	37.09	23.104	
7,400.0	7,322.5	7,597.7	7,322.5	21.9	34.3	33.99	1,508.3	682.2	856.8	819.4	37.46	22.875	
7,500.0	7,422.5	7,697.7	7,422.5	22.1	34.4	33.99	1,508.3	682.2	856.8	819.0	37.83	22.651	
7,600.0	7,522.5	7,797.7	7,522.5	22.2	34.5	33.99	1,508.3	682.2	856.8	818.6	38.20	22.429	
7,700.0	7,622.5	7,897.7	7,622.5	22.4	34.6	33.99	1,508.3	682.2	856.8	818.3	38.58	22.211	
7,800.0	7,722.5	7,997.7	7,722.5	22.5	34.7	33.99	1,508.3	682.2	856.8	817.9	38.95	21.997	
7,900.0	7,822.5	8,097.7	7,822.5	22.7	34.8	33.99	1,508.3	682.2	856.8	817.5	39.33	21.785	
8,000.0	7,922.5	8,197.7	7,922.5	22.9	34.9	33.99	1,508.3	682.2	856.8	817.1	39.71	21.577	
8,042.5	7,965.0	8,240.2	7,965.0	22.9	35.0	33.99	1,508.3	682.2	856.8	817.0	39.87	21.490	

<b>Company:</b>	Synergy Resources	<b>Local Co-ordinate Reference:</b>	Well SRC GCC 42-10D
<b>Project:</b>	SEC.10-T5N-R66W	<b>TVD Reference:</b>	WELL @ 4871.0ft (Original Well Elev)
<b>Reference Site:</b>	SRC Aims/GCC Pad Sec.10-T5N-R66W	<b>MD Reference:</b>	WELL @ 4871.0ft (Original Well Elev)
<b>Site Error:</b>	0.0ft	<b>North Reference:</b>	True
<b>Reference Well:</b>	SRC GCC 42-10D	<b>Survey Calculation Method:</b>	Minimum Curvature
<b>Well Error:</b>	0.0ft	<b>Output errors are at</b>	2.00 sigma
<b>Reference Wellbore</b>	Wellbore #1	<b>Database:</b>	Landmark
<b>Reference Design:</b>	Plan #2 (9-21-11)	<b>Offset TVD Reference:</b>	Offset Datum

Offset Design												Offset Site Error:	0.0ft
Survey Program: 0-MWD												Offset Well Error:	0.0ft
Reference		Offset		Semi Major Axis			Distance						Warning
Measured Depth (ft)	Vertical Depth (ft)	Measured Depth (ft)	Vertical Depth (ft)	Reference (ft)	Offset (ft)	Highside Toolface (°)	Offset Wellbore Centre +N/-S (ft)	+E/-W (ft)	Between Centres (ft)	Between Ellipses (ft)	Minimum Separation (ft)	Separation Factor	
0.0	0.0	0.0	0.0	0.0	0.0	-62.26	7.3	-13.9	15.7	15.7	0.00	N/A	
100.0	100.0	100.0	100.0	0.1	0.1	-62.26	7.3	-13.9	15.7	15.4	0.22	69.672	
200.0	200.0	200.0	200.0	0.3	0.3	-62.26	7.3	-13.9	15.7	15.0	0.67	23.224 CC	
300.0	300.0	299.9	299.9	0.6	0.6	-56.06	8.9	-13.3	16.0	14.9	1.12	14.241 ES	
400.0	400.0	399.6	399.5	0.8	0.8	-58.73	13.8	-11.5	17.0	15.4	1.58	10.781	
500.0	499.8	499.1	498.5	1.0	1.0	-49.74	22.0	-9.2	18.8	16.8	2.05	9.203	
600.0	599.5	598.4	597.2	1.3	1.3	-44.88	33.7	-7.2	21.6	19.1	2.53	8.541	
700.0	698.7	697.6	695.2	1.5	1.6	-43.24	48.7	-5.4	25.1	22.1	3.05	8.244	
800.0	797.5	796.7	792.5	1.8	2.0	-43.78	67.1	-3.8	29.2	25.6	3.61	8.096	
863.0	859.4	859.1	853.5	2.1	2.2	-44.85	80.4	-2.9	32.1	28.1	4.00	8.029 SF	
900.0	895.7	895.6	889.0	2.2	2.4	-45.41	88.8	-2.4	34.1	29.9	4.24	8.043	
1,000.0	993.7	994.2	984.4	2.6	2.9	-45.07	113.7	-1.3	41.5	36.6	4.90	8.484	
1,100.0	1,091.8	1,092.2	1,078.3	3.0	3.4	-43.14	141.7	-0.4	52.1	46.5	5.54	9.389	
1,200.0	1,189.9	1,189.4	1,170.5	3.4	4.0	-40.67	172.6	0.3	65.7	59.5	6.18	10.639	
1,300.0	1,288.0	1,285.6	1,260.6	3.8	4.6	-38.22	206.2	0.7	82.5	75.8	6.80	12.146	
1,400.0	1,386.0	1,380.6	1,348.4	4.2	5.2	-36.02	242.4	0.9	102.6	95.2	7.41	13.856	
1,500.0	1,484.1	1,474.2	1,433.8	4.6	6.0	-34.12	280.9	1.0	125.9	117.8	8.02	15.695	
1,600.0	1,582.2	1,567.2	1,517.3	5.0	6.7	-32.51	321.8	0.8	152.2	143.5	8.63	17.628	
1,700.0	1,680.3	1,663.3	1,603.2	5.4	7.5	-31.25	364.9	0.5	179.6	170.3	9.26	19.394	
1,800.0	1,778.3	1,759.4	1,689.0	5.8	8.3	-30.32	408.1	0.2	207.0	197.1	9.89	20.925	
1,900.0	1,876.4	1,855.5	1,774.9	6.3	9.1	-29.61	451.2	0.0	234.5	223.9	10.53	22.259	
2,000.0	1,974.5	1,951.7	1,860.8	6.7	10.0	-29.05	494.4	-0.3	262.0	250.8	11.18	23.430	
2,100.0	2,072.6	2,047.8	1,946.7	7.1	10.8	-28.59	537.6	-0.6	289.5	277.7	11.83	24.465	
2,200.0	2,170.6	2,143.9	2,032.6	7.5	11.6	-28.22	580.7	-0.8	317.0	304.5	12.49	25.386	
2,300.0	2,268.7	2,240.0	2,118.4	7.9	12.4	-27.90	623.9	-1.1	344.6	331.4	13.15	26.210	
2,400.0	2,366.8	2,336.1	2,204.3	8.4	13.3	-27.63	667.0	-1.3	372.1	358.3	13.81	26.952	
2,500.0	2,464.9	2,432.2	2,290.2	8.8	14.1	-27.40	710.2	-1.6	399.7	385.2	14.47	27.622	
2,600.0	2,562.9	2,528.4	2,376.1	9.2	14.9	-27.20	753.4	-1.9	427.3	412.1	15.14	28.230	
2,700.0	2,661.0	2,624.5	2,462.0	9.6	15.8	-27.02	796.5	-2.1	454.8	439.0	15.80	28.785	
2,800.0	2,759.1	2,720.6	2,547.8	10.0	16.6	-26.87	839.7	-2.4	482.4	466.0	16.47	29.293	
2,900.0	2,857.2	2,816.7	2,633.7	10.5	17.4	-26.73	882.8	-2.7	510.0	492.9	17.14	29.760	
3,000.0	2,955.2	2,912.8	2,719.6	10.9	18.2	-26.60	926.0	-2.9	537.6	519.8	17.81	30.190	
3,100.0	3,053.3	3,008.9	2,805.5	11.3	19.1	-26.49	969.2	-3.2	565.2	546.7	18.48	30.588	
3,200.0	3,151.4	3,105.0	2,891.3	11.7	19.9	-26.38	1,012.3	-3.5	592.8	573.6	19.15	30.956	
3,300.0	3,249.5	3,201.2	2,977.2	12.2	20.7	-26.29	1,055.5	-3.7	620.3	600.5	19.82	31.299	
3,400.0	3,347.5	3,297.3	3,063.1	12.6	21.6	-26.20	1,098.6	-4.0	647.9	627.4	20.49	31.618	
3,500.0	3,445.6	3,393.4	3,149.0	13.0	22.4	-26.12	1,141.8	-4.3	675.5	654.4	21.17	31.916	
3,600.0	3,543.7	3,489.5	3,234.9	13.4	23.2	-26.05	1,185.0	-4.5	703.1	681.3	21.84	32.196	
3,700.0	3,641.8	3,585.6	3,320.7	13.8	24.1	-25.98	1,228.1	-4.8	730.7	708.2	22.51	32.457	
3,800.0	3,739.8	3,681.7	3,406.6	14.3	24.9	-25.92	1,271.3	-5.0	758.3	735.1	23.19	32.703	
3,900.0	3,837.9	3,777.8	3,492.5	14.7	25.7	-25.86	1,314.4	-5.3	785.9	762.0	23.86	32.935	
4,000.0	3,936.0	3,874.0	3,578.4	15.1	26.6	-25.81	1,357.6	-5.6	813.5	788.9	24.54	33.154	
4,100.0	4,034.1	3,970.1	3,664.3	15.5	27.4	-25.76	1,400.8	-5.8	841.1	815.9	25.21	33.360	
4,200.0	4,132.1	4,066.2	3,750.1	16.0	28.3	-25.71	1,443.9	-6.1	868.7	842.8	25.89	33.555	
4,300.0	4,230.2	4,162.3	3,836.0	16.4	29.1	-25.67	1,487.1	-6.4	896.3	869.7	26.56	33.740	
4,400.0	4,328.3	4,258.4	3,921.9	16.8	29.9	-25.63	1,530.2	-6.6	923.9	896.6	27.24	33.916	
4,500.0	4,426.4	4,354.5	4,007.8	17.2	30.8	-25.59	1,573.4	-6.9	951.5	923.5	27.92	34.082	
4,514.5	4,440.6	4,368.5	4,020.2	17.3	30.9	-25.58	1,579.7	-6.9	955.5	927.5	28.01	34.106	
4,600.0	4,524.7	4,450.3	4,093.4	17.6	31.6	-25.74	1,616.4	-7.2	980.2	951.7	28.52	34.372	
4,700.0	4,623.6	4,545.1	4,178.1	17.9	32.4	-25.88	1,659.0	-7.4	1,011.8	982.8	29.02	34.868	
4,800.0	4,722.9	4,638.8	4,261.8	18.1	33.2	-25.96	1,701.1	-7.7	1,046.5	1,017.0	29.46	35.519	
4,900.0	4,822.6	4,731.4	4,344.5	18.3	34.0	-26.02	1,742.6	-7.9	1,084.1	1,054.2	29.85	36.320	

CC - Min centre to center distance or convergent point, SF - min separation factor, ES - min ellipse separation

<b>Company:</b>	Synergy Resources	<b>Local Co-ordinate Reference:</b>	Well SRC GCC 42-10D
<b>Project:</b>	SEC.10-T5N-R66W	<b>TVD Reference:</b>	WELL @ 4871.0ft (Original Well Elev)
<b>Reference Site:</b>	SRC Aims/GCC Pad Sec.10-T5N-R66W	<b>MD Reference:</b>	WELL @ 4871.0ft (Original Well Elev)
<b>Site Error:</b>	0.0ft	<b>North Reference:</b>	True
<b>Reference Well:</b>	SRC GCC 42-10D	<b>Survey Calculation Method:</b>	Minimum Curvature
<b>Well Error:</b>	0.0ft	<b>Output errors are at</b>	2.00 sigma
<b>Reference Wellbore</b>	Wellbore #1	<b>Database:</b>	Landmark
<b>Reference Design:</b>	Plan #2 (9-21-11)	<b>Offset TVD Reference:</b>	Offset Datum

Offset Design SRC Aims/GCC Pad Sec.10-T5N-R66W - SRC GCC 41-10D - Wellbore #1 - Plan #2 (9-21-11)													Offset Site Error: 0.0ft
Survey Program: 0-MWD													Offset Well Error: 0.0ft
Reference		Offset		Semi Major Axis			Distance						
Measured Depth (ft)	Vertical Depth (ft)	Measured Depth (ft)	Vertical Depth (ft)	Reference (ft)	Offset (ft)	Highside Toolface (°)	Offset Wellbore Centre +N/-S (ft)	+E/-W (ft)	Between Centres (ft)	Between Ellipses (ft)	Minimum Separation (ft)	Separation Factor	Warning
5,000.0	4,922.5	4,822.5	4,425.9	18.5	34.8	-26.04	1,783.6	-8.2	1,124.6	1,094.4	30.17	37.269	
5,077.5	5,000.0	4,892.3	4,488.2	18.6	35.4	-11.75	1,814.9	-8.4	1,158.0	1,127.6	30.39	38.105	
5,100.0	5,022.5	4,912.3	4,506.2	18.6	35.6	-11.65	1,823.9	-8.4	1,167.9	1,137.4	30.47	38.329	
5,200.0	5,122.5	5,001.7	4,586.0	18.7	36.4	-11.24	1,864.0	-8.7	1,212.1	1,181.3	30.86	39.280	
5,300.0	5,222.5	5,091.0	4,665.9	18.9	37.2	-10.85	1,904.1	-8.9	1,256.4	1,225.2	31.26	40.197	
5,400.0	5,322.5	5,180.4	4,745.7	19.0	37.9	-10.49	1,944.2	-9.2	1,300.7	1,269.1	31.66	41.079	
5,500.0	5,422.5	5,281.3	4,835.9	19.1	38.8	-10.12	1,989.5	-9.4	1,345.1	1,312.9	32.11	41.895	
5,600.0	5,522.5	5,453.5	4,992.6	19.2	39.9	-9.58	2,060.8	-9.9	1,386.0	1,353.3	32.68	42.406	
5,700.0	5,622.5	5,634.8	5,161.9	19.4	40.9	-9.13	2,125.5	-10.3	1,421.4	1,388.1	33.28	42.708	
5,800.0	5,722.5	5,824.4	5,343.0	19.5	41.8	-8.78	2,181.6	-10.6	1,450.7	1,416.8	33.88	42.818	
5,900.0	5,822.5	6,021.1	5,534.4	19.7	42.5	-8.52	2,227.0	-10.9	1,473.6	1,439.1	34.46	42.758	
6,000.0	5,922.5	6,223.4	5,733.9	19.8	43.1	-8.34	2,260.0	-11.1	1,489.7	1,454.7	35.01	42.550	
6,100.0	6,022.5	6,429.5	5,939.1	19.9	43.5	-8.24	2,278.9	-11.2	1,498.8	1,463.3	35.51	42.211	
6,200.0	6,122.5	6,613.0	6,122.5	20.1	43.7	-8.21	2,283.4	-11.2	1,501.0	1,465.0	35.93	41.778	
6,300.0	6,222.5	6,713.0	6,222.5	20.2	43.7	-8.21	2,283.4	-11.2	1,501.0	1,464.7	36.25	41.406	
6,400.0	6,322.5	6,813.0	6,322.5	20.4	43.8	-8.21	2,283.4	-11.2	1,501.0	1,464.4	36.57	41.038	
6,500.0	6,422.5	6,913.0	6,422.5	20.5	43.9	-8.21	2,283.4	-11.2	1,501.0	1,464.1	36.90	40.674	
6,600.0	6,522.5	7,013.0	6,522.5	20.7	43.9	-8.21	2,283.4	-11.2	1,501.0	1,463.7	37.23	40.313	
6,700.0	6,622.5	7,113.0	6,622.5	20.8	44.0	-8.21	2,283.4	-11.2	1,501.0	1,463.4	37.57	39.956	
6,800.0	6,722.5	7,213.0	6,722.5	21.0	44.1	-8.21	2,283.4	-11.2	1,501.0	1,463.1	37.90	39.603	
6,900.0	6,822.5	7,313.0	6,822.5	21.1	44.1	-8.21	2,283.4	-11.2	1,501.0	1,462.7	38.24	39.254	
7,000.0	6,922.5	7,413.0	6,922.5	21.3	44.2	-8.21	2,283.4	-11.2	1,501.0	1,462.4	38.58	38.910	
7,100.0	7,022.5	7,513.0	7,022.5	21.4	44.3	-8.21	2,283.4	-11.2	1,501.0	1,462.0	38.92	38.569	
7,200.0	7,122.5	7,613.0	7,122.5	21.6	44.3	-8.21	2,283.4	-11.2	1,501.0	1,461.7	39.26	38.231	
7,300.0	7,222.5	7,713.0	7,222.5	21.7	44.4	-8.21	2,283.4	-11.2	1,501.0	1,461.4	39.60	37.898	
7,400.0	7,322.5	7,813.0	7,322.5	21.9	44.5	-8.21	2,283.4	-11.2	1,501.0	1,461.0	39.95	37.569	
7,500.0	7,422.5	7,913.0	7,422.5	22.1	44.6	-8.21	2,283.4	-11.2	1,501.0	1,460.7	40.30	37.244	
7,600.0	7,522.5	8,013.0	7,522.5	22.2	44.6	-8.21	2,283.4	-11.2	1,501.0	1,460.3	40.65	36.923	
7,700.0	7,622.5	8,113.0	7,622.5	22.4	44.7	-8.21	2,283.4	-11.2	1,501.0	1,460.0	41.00	36.605	
7,800.0	7,722.5	8,213.0	7,722.5	22.5	44.8	-8.21	2,283.4	-11.2	1,501.0	1,459.6	41.36	36.292	
7,900.0	7,822.5	8,313.0	7,822.5	22.7	44.9	-8.21	2,283.4	-11.2	1,501.0	1,459.2	41.71	35.982	
8,000.0	7,922.5	8,413.0	7,922.5	22.9	44.9	-8.21	2,283.4	-11.2	1,501.0	1,458.9	42.07	35.676	
8,042.5	7,965.0	8,455.5	7,965.0	22.9	45.0	-8.21	2,283.4	-11.2	1,501.0	1,458.7	42.22	35.547	

<b>Company:</b>	Synergy Resources	<b>Local Co-ordinate Reference:</b>	Well SRC GCC 42-10D
<b>Project:</b>	SEC.10-T5N-R66W	<b>TVD Reference:</b>	WELL @ 4871.0ft (Original Well Elev)
<b>Reference Site:</b>	SRC Aims/GCC Pad Sec.10-T5N-R66W	<b>MD Reference:</b>	WELL @ 4871.0ft (Original Well Elev)
<b>Site Error:</b>	0.0ft	<b>North Reference:</b>	True
<b>Reference Well:</b>	SRC GCC 42-10D	<b>Survey Calculation Method:</b>	Minimum Curvature
<b>Well Error:</b>	0.0ft	<b>Output errors are at</b>	2.00 sigma
<b>Reference Wellbore</b>	Wellbore #1	<b>Database:</b>	Landmark
<b>Reference Design:</b>	Plan #2 (9-21-11)	<b>Offset TVD Reference:</b>	Offset Datum

Reference Depths are relative to WELL @ 4871.0ft (Original Well Elev) Coordinates are relative to: SRC GCC 42-10D  
 Offset Depths are relative to Offset Datum Coordinate System is US State Plane 1983, Wyoming Western Zone  
 Central Meridian is -110.083333 ° Grid Convergence at Surface is: 3.46°



<b>Company:</b>	Synergy Resources	<b>Local Co-ordinate Reference:</b>	Well SRC GCC 42-10D
<b>Project:</b>	SEC.10-T5N-R66W	<b>TVD Reference:</b>	WELL @ 4871.0ft (Original Well Elev)
<b>Reference Site:</b>	SRC Aims/GCC Pad Sec.10-T5N-R66W	<b>MD Reference:</b>	WELL @ 4871.0ft (Original Well Elev)
<b>Site Error:</b>	0.0ft	<b>North Reference:</b>	True
<b>Reference Well:</b>	SRC GCC 42-10D	<b>Survey Calculation Method:</b>	Minimum Curvature
<b>Well Error:</b>	0.0ft	<b>Output errors are at</b>	2.00 sigma
<b>Reference Wellbore</b>	Wellbore #1	<b>Database:</b>	Landmark
<b>Reference Design:</b>	Plan #2 (9-21-11)	<b>Offset TVD Reference:</b>	Offset Datum

Reference Depths are relative to WELL @ 4871.0ft (Original Well Elev) Coordinates are relative to: SRC GCC 42-10D  
Offset Depths are relative to Offset Datum Coordinate System is US State Plane 1983, Wyoming Western Zone  
Central Meridian is -110.083333 ° Grid Convergence at Surface is: 3.46°

