



## **EOG Resources**

**Weld Co., CO**

**Sec 14-T11N-R64W**

**Lion Creek #03-14H**

**Hz**

**Survey: Survey #1**

## **Standard Survey Report**

**05 February, 2011**





WELL DETAILS: Lion Creek #03-14H

Ground Level:		5343.0			
+N/-S	+E/-W	Northing	Easting	Latitude	Longitude
0.0	0.0	577647.77	2275137.77	40° 54' 53.280 N	104° 30' 16.400 W

SECTION DETAILS

No plan data is available

FORMATION TOP DETAILS

No formation data is available

ANNOTATIONS

TVD	MD	Annotation
7622.1	13234.0	Projection to Bit

CASING DETAILS

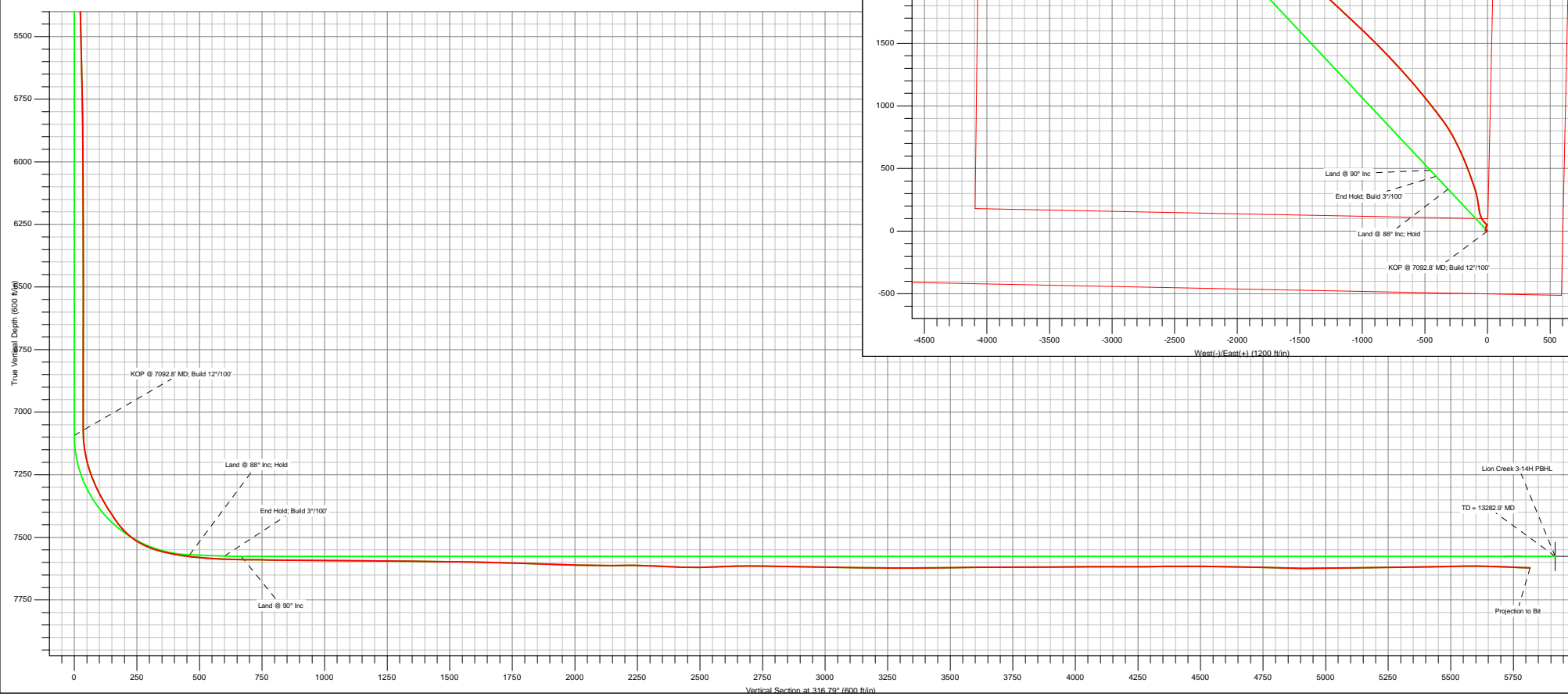
No casing data is available

WELLBORE TARGET DETAILS (LAT/LONG)

Name	TVD	+N/-S	+E/-W	Latitude	Longitude	Shape
No wellbore target data is available.						



Azimuths to True North  
Magnetic North: 8.85°  
Magnetic Field  
Strength: 53482.0nT  
Dip Angle: 67.53°  
Date: 11/18/2010  
Model: IGRF2010-14



<b>Company:</b>	EOG Resources	<b>Local Co-ordinate Reference:</b>	Well Lion Creek #03-14H
<b>Project:</b>	Weld Co., CO	<b>TVD Reference:</b>	Lion Creek 3-14H KBE @ 5368.0ft (True #30)
<b>Site:</b>	Sec 14-T11N-R64W	<b>MD Reference:</b>	Lion Creek 3-14H KBE @ 5368.0ft (True #30)
<b>Well:</b>	Lion Creek #03-14H	<b>North Reference:</b>	True
<b>Wellbore:</b>	Hz	<b>Survey Calculation Method:</b>	Minimum Curvature
<b>Design:</b>	Hz	<b>Database:</b>	Local

<b>Project</b>	Weld Co., CO		
<b>Map System:</b>	US State Plane 1927 (Exact solution)	<b>System Datum:</b>	Mean Sea Level
<b>Geo Datum:</b>	NAD 1927 (NADCON CONUS)		
<b>Map Zone:</b>	Colorado North 501		

<b>Site</b>	Sec 14-T11N-R64W		
<b>Site Position:</b>		<b>Northing:</b>	
<b>From:</b>	Lat/Long	<b>Easting:</b>	
<b>Position Uncertainty:</b>	0.0 ft	<b>Slot Radius:</b>	
		<b>Latitude:</b>	
		<b>Longitude:</b>	
		<b>Grid Convergence:</b>	1.00

<b>Well</b>	Lion Creek #03-14H		
<b>Well Position</b>	<b>+N/-S</b>	0.0 ft	<b>Northing:</b> 577,647.78 ft
	<b>+E/-W</b>	0.0 ft	<b>Easting:</b> 2,275,137.77 ft
<b>Position Uncertainty</b>	0.0 ft	<b>Wellhead Elevation:</b>	ft
		<b>Latitude:</b>	40° 54' 53.280 N
		<b>Longitude:</b>	104° 30' 16.400 W
		<b>Ground Level:</b>	5,343.0 ft

<b>Wellbore</b>	Hz				
<b>Magnetics</b>	<b>Model Name</b>	<b>Sample Date</b>	<b>Declination (°)</b>	<b>Dip Angle (°)</b>	<b>Field Strength (nT)</b>
	IGRF2010-14	11/19/10	8.85	67.53	53,482

<b>Design</b>	Hz				
<b>Audit Notes:</b>					
<b>Version:</b>	1.0	<b>Phase:</b>	ACTUAL	<b>Tie On Depth:</b>	0.0
<b>Vertical Section:</b>	<b>Depth From (TVD) (ft)</b>	<b>+N/-S (ft)</b>	<b>+E/-W (ft)</b>	<b>Direction (°)</b>	
	0.0	0.0	0.0	316.79	

<b>Survey Program</b>	<b>Date</b>	02/05/11			
<b>From (ft)</b>	<b>To (ft)</b>	<b>Survey (Wellbore)</b>	<b>Tool Name</b>	<b>Description</b>	
1,584.0	13,234.0	Survey #1 (Hz)	MWD		

<b>Survey</b>										
<b>Measured Depth (ft)</b>	<b>Inclination (°)</b>	<b>Azimuth (°)</b>	<b>Vertical Depth (ft)</b>	<b>Subsea Depth (ft)</b>	<b>+N/-S (ft)</b>	<b>+E/-W (ft)</b>	<b>Vertical Section (ft)</b>	<b>Dogleg Rate (°/100ft)</b>	<b>Build Rate (°/100ft)</b>	<b>Turn Rate (°/100ft)</b>
0.0	0.00	0.00	0.0	-5,368.0	0.0	0.0	0.0	0.00	0.00	0.00
1,584.0	0.00	0.00	1,584.0	-3,784.0	0.0	0.0	0.0	0.00	0.00	0.00
1,672.0	0.62	314.53	1,672.0	-3,696.0	0.3	-0.3	0.5	0.70	0.70	0.00
1,947.0	0.66	300.91	1,947.0	-3,421.0	2.2	-2.8	3.5	0.06	0.01	-4.95
2,235.0	0.66	325.61	2,235.0	-3,133.0	4.4	-5.1	6.7	0.10	0.00	8.58
2,525.0	0.57	328.42	2,524.9	-2,843.1	7.0	-6.8	9.8	0.03	-0.03	0.97
2,815.0	0.22	139.72	2,814.9	-2,553.1	7.8	-7.2	10.6	0.27	-0.12	59.07
3,106.0	0.48	215.57	3,105.9	-2,262.1	6.4	-7.6	9.8	0.16	0.09	26.07
3,394.0	0.70	228.40	3,393.9	-1,974.1	4.3	-9.6	9.7	0.09	0.08	4.45
3,681.0	0.53	253.71	3,680.9	-1,687.1	2.7	-12.2	10.3	0.11	-0.06	8.82

<b>Company:</b>	EOG Resources	<b>Local Co-ordinate Reference:</b>	Well Lion Creek #03-14H
<b>Project:</b>	Weld Co., CO	<b>TVD Reference:</b>	Lion Creek 3-14H KBE @ 5368.0ft (True #30)
<b>Site:</b>	Sec 14-T11N-R64W	<b>MD Reference:</b>	Lion Creek 3-14H KBE @ 5368.0ft (True #30)
<b>Well:</b>	Lion Creek #03-14H	<b>North Reference:</b>	True
<b>Wellbore:</b>	Hz	<b>Survey Calculation Method:</b>	Minimum Curvature
<b>Design:</b>	Hz	<b>Database:</b>	Local

Survey											
Measured Depth (ft)	Inclination (°)	Azimuth (°)	Vertical Depth (ft)	Subsea Depth (ft)	+N/-S (ft)	+E/-W (ft)	Vertical Section (ft)	Dogleg Rate (°/100ft)	Build Rate (°/100ft)	Turn Rate (°/100ft)	
3,971.0	0.97	279.38	3,970.9	-1,397.1	2.7	-15.9	12.9	0.19	0.15	8.85	
4,259.0	0.66	48.84	4,258.9	-1,109.1	4.2	-17.0	14.7	0.51	-0.11	44.95	
4,550.0	0.48	35.04	4,549.9	-818.1	6.3	-15.1	14.9	0.08	-0.06	-4.74	
4,840.0	0.92	7.36	4,839.8	-528.2	9.6	-14.1	16.7	0.19	0.15	-9.54	
5,131.0	1.27	11.31	5,130.8	-237.2	15.1	-13.1	20.0	0.12	0.12	1.36	
5,420.0	1.63	1.47	5,419.7	51.7	22.4	-12.4	24.8	0.15	0.12	-3.40	
5,709.0	1.85	2.26	5,708.6	340.6	31.1	-12.1	31.0	0.08	0.08	0.27	
5,997.0	0.84	33.99	5,996.5	628.5	37.5	-10.8	34.7	0.42	-0.35	11.02	
6,285.0	0.79	38.29	6,284.4	916.4	40.8	-8.3	35.5	0.03	-0.02	1.49	
6,510.0	0.75	46.47	6,509.4	1,141.4	43.1	-6.3	35.7	0.05	-0.02	3.64	
6,795.0	0.66	54.20	6,794.4	1,426.4	45.3	-3.6	35.5	0.05	-0.03	2.71	
7,032.0	0.48	50.33	7,031.4	1,663.4	46.7	-1.8	35.3	0.08	-0.08	-1.63	
7,066.0	0.66	14.39	7,065.4	1,697.4	47.0	-1.6	35.4	1.15	0.53	-105.71	
7,097.0	2.77	316.82	7,096.4	1,728.4	47.7	-2.1	36.2	8.00	6.81	-185.71	
7,130.0	6.20	311.19	7,129.3	1,761.3	49.5	-4.0	38.8	10.47	10.39	-17.06	
7,161.0	9.71	311.46	7,160.0	1,792.0	52.3	-7.2	43.1	11.32	11.32	0.87	
7,194.0	13.45	314.01	7,192.3	1,824.3	56.8	-12.0	49.7	11.44	11.33	7.73	
7,226.0	16.84	317.17	7,223.2	1,855.2	62.8	-17.9	58.0	10.90	10.59	9.88	
7,259.0	20.22	318.49	7,254.5	1,886.5	70.6	-24.9	68.5	10.32	10.24	4.00	
7,291.0	23.30	322.09	7,284.2	1,916.2	79.8	-32.4	80.3	10.49	9.63	11.25	
7,322.0	26.46	327.63	7,312.3	1,944.3	90.4	-39.9	93.2	12.66	10.19	17.87	
7,353.0	29.85	333.25	7,339.6	1,971.6	103.2	-47.1	107.4	13.87	10.94	18.13	
7,384.0	33.05	338.35	7,366.1	1,998.1	117.9	-53.7	122.7	13.42	10.32	16.45	
7,417.0	35.82	343.80	7,393.3	2,025.3	135.6	-59.7	139.7	12.55	8.39	16.52	
7,449.0	38.15	349.95	7,418.9	2,050.9	154.3	-64.0	156.3	13.66	7.28	19.22	
7,481.0	42.42	351.27	7,443.3	2,075.3	174.7	-67.4	173.5	13.61	13.34	4.13	
7,513.0	47.34	350.92	7,465.9	2,097.9	197.0	-70.9	192.1	15.39	15.38	-1.09	
7,545.0	52.53	350.66	7,486.5	2,118.5	221.2	-74.8	212.4	16.23	16.22	-0.81	
7,577.0	58.11	350.31	7,504.7	2,136.7	247.1	-79.2	234.3	17.46	17.44	-1.09	
7,608.0	63.25	348.81	7,519.9	2,151.9	273.7	-84.1	257.0	17.11	16.58	-4.84	
7,640.0	68.18	345.91	7,533.1	2,165.1	302.1	-90.5	282.1	17.48	15.41	-9.06	
7,672.0	72.26	342.83	7,543.9	2,175.9	331.1	-98.6	308.8	15.64	12.75	-9.63	
7,703.0	74.90	341.43	7,552.7	2,184.7	359.4	-107.7	335.7	9.55	8.52	-4.52	
7,736.0	77.54	340.55	7,560.5	2,192.5	389.7	-118.1	364.9	8.41	8.00	-2.67	
7,768.0	80.31	339.76	7,566.7	2,198.7	419.2	-128.8	393.7	8.99	8.66	-2.47	
7,800.0	81.63	340.11	7,571.7	2,203.7	448.9	-139.7	422.8	4.26	4.13	1.09	
7,824.0	82.81	340.02	7,574.9	2,206.9	471.3	-147.8	444.6	4.93	4.92	-0.38	
7,896.0	86.37	337.82	7,581.7	2,213.7	538.1	-173.5	511.0	5.81	4.94	-3.06	
7,926.0	86.15	336.95	7,583.7	2,215.7	565.8	-185.0	539.1	2.99	-0.73	-2.90	
7,957.0	86.73	335.98	7,585.6	2,217.6	594.1	-197.4	568.2	3.64	1.87	-3.13	
7,987.0	87.47	335.19	7,587.1	2,219.1	621.4	-209.8	596.6	3.61	2.47	-2.63	
8,018.0	88.35	334.66	7,588.3	2,220.3	649.5	-222.9	626.0	3.31	2.84	-1.71	
8,048.0	89.41	334.92	7,588.8	2,220.8	676.6	-235.7	654.5	3.64	3.53	0.87	

<b>Company:</b>	EOG Resources	<b>Local Co-ordinate Reference:</b>	Well Lion Creek #03-14H
<b>Project:</b>	Weld Co., CO	<b>TVD Reference:</b>	Lion Creek 3-14H KBE @ 5368.0ft (True #30)
<b>Site:</b>	Sec 14-T11N-R64W	<b>MD Reference:</b>	Lion Creek 3-14H KBE @ 5368.0ft (True #30)
<b>Well:</b>	Lion Creek #03-14H	<b>North Reference:</b>	True
<b>Wellbore:</b>	Hz	<b>Survey Calculation Method:</b>	Minimum Curvature
<b>Design:</b>	Hz	<b>Database:</b>	Local

Survey											
Measured Depth (ft)	Inclination (°)	Azimuth (°)	Vertical Depth (ft)	Subsea Depth (ft)	+N/-S (ft)	+E/-W (ft)	Vertical Section (ft)	Dogleg Rate (°/100ft)	Build Rate (°/100ft)	Turn Rate (°/100ft)	
8,079.0	89.98	334.31	7,589.0	2,221.0	704.6	-249.0	684.0	2.69	1.84	-1.97	
8,109.0	89.41	332.73	7,589.2	2,221.2	731.5	-262.4	712.8	5.60	-1.90	-5.27	
8,141.0	88.70	330.71	7,589.7	2,221.7	759.6	-277.5	743.7	6.69	-2.22	-6.31	
8,173.0	88.88	329.21	7,590.4	2,222.4	787.3	-293.5	774.8	4.72	0.56	-4.69	
8,205.0	89.27	327.37	7,590.9	2,222.9	814.6	-310.3	806.2	5.88	1.22	-5.75	
8,236.0	89.36	326.40	7,591.3	2,223.3	840.5	-327.3	836.7	3.14	0.29	-3.13	
8,268.0	89.32	324.90	7,591.6	2,223.6	866.9	-345.3	868.3	4.69	-0.13	-4.69	
8,300.0	89.23	323.06	7,592.0	2,224.0	892.8	-364.2	900.0	5.76	-0.28	-5.75	
8,365.0	89.85	322.18	7,592.6	2,224.6	944.5	-403.6	964.7	1.66	0.95	-1.35	
8,430.0	89.76	321.56	7,592.8	2,224.8	995.6	-443.7	1,029.5	0.96	-0.14	-0.95	
8,494.0	89.71	321.39	7,593.1	2,225.1	1,045.7	-483.6	1,093.2	0.28	-0.08	-0.27	
8,527.0	89.49	321.21	7,593.3	2,225.3	1,071.4	-504.2	1,126.1	0.86	-0.67	-0.55	
8,591.0	89.45	319.89	7,593.9	2,225.9	1,120.8	-544.9	1,190.0	2.06	-0.06	-2.06	
8,656.0	89.32	319.72	7,594.6	2,226.6	1,170.5	-586.9	1,254.9	0.33	-0.20	-0.26	
8,752.0	89.41	318.66	7,595.7	2,227.7	1,243.1	-649.6	1,350.8	1.11	0.09	-1.10	
8,848.0	89.27	317.79	7,596.8	2,228.8	1,314.7	-713.5	1,446.8	0.92	-0.15	-0.91	
8,943.0	89.05	316.38	7,598.2	2,230.2	1,384.3	-778.2	1,541.8	1.50	-0.23	-1.48	
8,976.0	89.01	316.12	7,598.7	2,230.7	1,408.1	-801.0	1,574.7	0.80	-0.12	-0.79	
9,071.0	89.10	314.45	7,600.3	2,232.3	1,475.6	-867.9	1,669.7	1.76	0.09	-1.76	
9,134.0	88.13	314.53	7,601.8	2,233.8	1,519.8	-912.8	1,732.6	1.54	-1.54	0.13	
9,230.0	87.47	313.74	7,605.5	2,237.5	1,586.6	-981.6	1,828.5	1.07	-0.69	-0.82	
9,295.0	88.57	313.92	7,607.7	2,239.7	1,631.5	-1,028.5	1,893.3	1.71	1.69	0.28	
9,392.0	87.87	313.30	7,610.7	2,242.7	1,698.4	-1,098.7	1,990.1	0.96	-0.72	-0.64	
9,455.0	89.67	313.22	7,612.1	2,244.1	1,741.6	-1,144.6	2,053.0	2.86	2.86	-0.13	
9,486.0	89.98	313.04	7,612.2	2,244.2	1,762.8	-1,167.2	2,083.9	1.16	1.00	-0.58	
9,551.0	90.15	312.42	7,612.1	2,244.1	1,806.9	-1,214.9	2,148.8	0.99	0.26	-0.95	
9,616.0	90.20	313.13	7,611.9	2,243.9	1,851.0	-1,262.6	2,213.6	1.10	0.08	1.09	
9,680.0	88.09	312.78	7,612.9	2,244.9	1,894.6	-1,309.5	2,277.5	3.34	-3.30	-0.55	
9,744.0	86.77	312.34	7,615.7	2,247.7	1,937.9	-1,356.6	2,341.2	2.17	-2.06	-0.69	
9,807.0	87.74	312.07	7,618.8	2,250.8	1,980.1	-1,403.2	2,403.9	1.60	1.54	-0.43	
9,839.0	88.75	311.98	7,619.7	2,251.7	2,001.6	-1,426.9	2,435.8	3.17	3.16	-0.28	
9,872.0	89.71	312.07	7,620.2	2,252.2	2,023.6	-1,451.5	2,468.7	2.92	2.91	0.27	
9,904.0	91.12	312.42	7,620.0	2,252.0	2,045.2	-1,475.1	2,500.6	4.54	4.41	1.09	
9,936.0	92.22	312.51	7,619.0	2,251.0	2,066.8	-1,498.7	2,532.5	3.45	3.44	0.28	
9,968.0	92.48	312.25	7,617.7	2,249.7	2,088.3	-1,522.4	2,564.4	1.15	0.81	-0.81	
10,032.0	91.69	312.07	7,615.4	2,247.4	2,131.2	-1,569.8	2,628.1	1.27	-1.23	-0.28	
10,095.0	89.80	311.02	7,614.6	2,246.6	2,173.0	-1,616.9	2,690.8	3.43	-3.00	-1.67	
10,158.0	89.14	310.58	7,615.1	2,247.1	2,214.2	-1,664.6	2,753.5	1.26	-1.05	-0.70	
10,189.0	88.84	310.58	7,615.7	2,247.7	2,234.3	-1,688.1	2,784.3	0.97	-0.97	0.00	
10,252.0	89.27	310.84	7,616.7	2,248.7	2,275.4	-1,735.9	2,846.9	0.80	0.68	0.41	
10,349.0	88.88	311.11	7,618.3	2,250.3	2,339.0	-1,809.1	2,943.4	0.49	-0.40	0.28	
10,413.0	89.32	311.81	7,619.3	2,251.3	2,381.4	-1,857.1	3,007.2	1.29	0.69	1.09	

<b>Company:</b>	EOG Resources	<b>Local Co-ordinate Reference:</b>	Well Lion Creek #03-14H
<b>Project:</b>	Weld Co., CO	<b>TVD Reference:</b>	Lion Creek 3-14H KBE @ 5368.0ft (True #30)
<b>Site:</b>	Sec 14-T11N-R64W	<b>MD Reference:</b>	Lion Creek 3-14H KBE @ 5368.0ft (True #30)
<b>Well:</b>	Lion Creek #03-14H	<b>North Reference:</b>	True
<b>Wellbore:</b>	Hz	<b>Survey Calculation Method:</b>	Minimum Curvature
<b>Design:</b>	Hz	<b>Database:</b>	Local

Survey										
Measured Depth (ft)	Inclination (°)	Azimuth (°)	Vertical Depth (ft)	Subsea Depth (ft)	+N/-S (ft)	+E/-W (ft)	Vertical Section (ft)	Dogleg Rate (°/100ft)	Build Rate (°/100ft)	Turn Rate (°/100ft)
10,508.0	88.70	311.90	7,620.9	2,252.9	2,444.8	-1,927.8	3,101.8	0.66	-0.65	0.09
10,573.0	89.71	311.98	7,621.8	2,253.8	2,488.2	-1,976.2	3,166.5	1.56	1.55	0.12
10,638.0	89.54	312.07	7,622.3	2,254.3	2,531.7	-2,024.4	3,231.3	0.30	-0.26	0.14
10,702.0	89.93	310.93	7,622.6	2,254.6	2,574.1	-2,072.4	3,295.0	1.88	0.61	-1.78
10,765.0	90.20	310.23	7,622.5	2,254.5	2,615.1	-2,120.2	3,357.7	1.19	0.43	-1.11
10,828.0	90.59	309.96	7,622.1	2,254.1	2,655.7	-2,168.4	3,420.2	0.75	0.62	-0.43
10,892.0	90.64	310.14	7,621.4	2,253.4	2,696.9	-2,217.4	3,483.8	0.29	0.08	0.28
10,957.0	90.99	310.14	7,620.4	2,252.4	2,738.8	-2,267.1	3,548.4	0.54	0.54	0.00
11,022.0	90.24	309.88	7,619.7	2,251.7	2,780.5	-2,316.9	3,612.9	1.22	-1.15	-0.40
11,086.0	89.63	309.26	7,619.8	2,251.8	2,821.3	-2,366.2	3,676.4	1.36	-0.95	-0.97
11,151.0	90.64	309.44	7,619.7	2,251.7	2,862.5	-2,416.5	3,740.8	1.58	1.55	0.28
11,215.0	90.33	308.64	7,619.1	2,251.1	2,902.8	-2,466.2	3,804.3	1.34	-0.48	-1.25
11,279.0	90.29	308.29	7,618.8	2,250.8	2,942.6	-2,516.3	3,867.6	0.55	-0.06	-0.55
11,343.0	89.76	308.21	7,618.8	2,250.8	2,982.3	-2,566.6	3,930.9	0.84	-0.83	-0.13
11,408.0	90.73	308.21	7,618.5	2,250.5	3,022.5	-2,617.6	3,995.1	1.49	1.49	0.00
11,472.0	91.08	308.21	7,617.5	2,249.5	3,062.1	-2,667.9	4,058.4	0.55	0.55	0.00
11,536.0	89.58	307.33	7,617.1	2,249.1	3,101.2	-2,718.5	4,121.6	2.72	-2.34	-1.38
11,601.0	90.07	308.64	7,617.3	2,249.3	3,141.3	-2,769.7	4,185.9	2.15	0.75	2.02
11,697.0	90.20	310.67	7,617.1	2,249.1	3,202.5	-2,843.6	4,281.1	2.12	0.14	2.11
11,791.0	90.46	313.39	7,616.5	2,248.5	3,265.4	-2,913.4	4,374.8	2.91	0.28	2.89
11,857.0	90.73	314.71	7,615.8	2,247.8	3,311.3	-2,960.9	4,440.7	2.04	0.41	2.00
11,921.0	89.76	316.03	7,615.6	2,247.6	3,356.9	-3,005.8	4,504.7	2.56	-1.52	2.06
11,984.0	88.92	316.12	7,616.3	2,248.3	3,402.2	-3,049.5	4,567.7	1.34	-1.33	0.14
12,079.0	88.18	316.12	7,618.7	2,250.7	3,470.7	-3,115.4	4,662.6	0.78	-0.78	0.00
12,176.0	88.88	315.15	7,621.2	2,253.2	3,540.0	-3,183.2	4,759.6	1.23	0.72	-1.00
12,240.0	89.23	316.03	7,622.2	2,254.2	3,585.7	-3,227.9	4,823.5	1.48	0.55	1.38
12,273.0	88.92	315.76	7,622.8	2,254.8	3,609.4	-3,250.9	4,856.5	1.25	-0.94	-0.82
12,305.0	88.84	315.68	7,623.4	2,255.4	3,632.3	-3,273.2	4,888.5	0.35	-0.25	-0.25
12,338.0	90.24	315.85	7,623.7	2,255.7	3,656.0	-3,296.3	4,921.5	4.27	4.24	0.52
12,370.0	90.90	314.80	7,623.3	2,255.3	3,678.7	-3,318.8	4,953.5	3.88	2.06	-3.28
12,435.0	90.90	314.71	7,622.3	2,254.3	3,724.5	-3,364.9	5,018.5	0.14	0.00	-0.14
12,499.0	89.98	313.30	7,621.8	2,253.8	3,768.9	-3,410.9	5,082.4	2.63	-1.44	-2.20
12,531.0	89.85	315.50	7,621.9	2,253.9	3,791.3	-3,433.8	5,114.3	6.89	-0.41	6.88
12,596.0	90.90	315.50	7,621.5	2,253.5	3,837.7	-3,479.4	5,179.3	1.62	1.62	0.00
12,661.0	91.08	315.06	7,620.3	2,252.3	3,883.9	-3,525.1	5,244.3	0.73	0.28	-0.68
12,724.0	90.99	315.68	7,619.2	2,251.2	3,928.7	-3,569.3	5,307.3	0.99	-0.14	0.98
12,789.0	90.59	315.15	7,618.3	2,250.3	3,975.0	-3,615.0	5,372.2	1.02	-0.62	-0.82
12,854.0	91.12	315.32	7,617.3	2,249.3	4,021.1	-3,660.7	5,437.2	0.86	0.82	0.26
12,951.0	91.08	315.41	7,615.5	2,247.5	4,090.1	-3,728.9	5,534.2	0.10	-0.04	0.09
13,049.0	88.70	314.45	7,615.7	2,247.7	4,159.3	-3,798.3	5,632.1	2.62	-2.43	-0.98
13,145.0	87.96	314.62	7,618.5	2,250.5	4,226.6	-3,866.7	5,728.0	0.79	-0.77	0.18
13,188.0	87.52	314.62	7,620.1	2,252.1	4,256.8	-3,897.2	5,770.9	1.02	-1.02	0.00
Projection to Bit										

<b>Company:</b>	EOG Resources	<b>Local Co-ordinate Reference:</b>	Well Lion Creek #03-14H
<b>Project:</b>	Weld Co., CO	<b>TVD Reference:</b>	Lion Creek 3-14H KBE @ 5368.0ft (True #30)
<b>Site:</b>	Sec 14-T11N-R64W	<b>MD Reference:</b>	Lion Creek 3-14H KBE @ 5368.0ft (True #30)
<b>Well:</b>	Lion Creek #03-14H	<b>North Reference:</b>	True
<b>Wellbore:</b>	Hz	<b>Survey Calculation Method:</b>	Minimum Curvature
<b>Design:</b>	Hz	<b>Database:</b>	Local

Survey											
Measured Depth (ft)	Inclination (°)	Azimuth (°)	Vertical Depth (ft)	Subsea Depth (ft)	+N/-S (ft)	+E/-W (ft)	Vertical Section (ft)	Dogleg Rate (°/100ft)	Build Rate (°/100ft)	Turn Rate (°/100ft)	
13,234.0	87.52	314.62	7,622.1	2,254.1	4,289.1	-3,929.9	5,816.8	0.00	0.00	0.00	

Survey Annotations					
Measured Depth (ft)	Vertical Depth (ft)	Local Coordinates			
		+N/-S (ft)	+E/-W (ft)	Comment	
13,234.0	7,622.1	4,289.1	-3,929.9	Projection to Bit	

Checked By: _____	Approved By: _____	Date: _____
-------------------	--------------------	-------------