

ENSIGN

Directional

Well Name: SRC GCC 41-10D

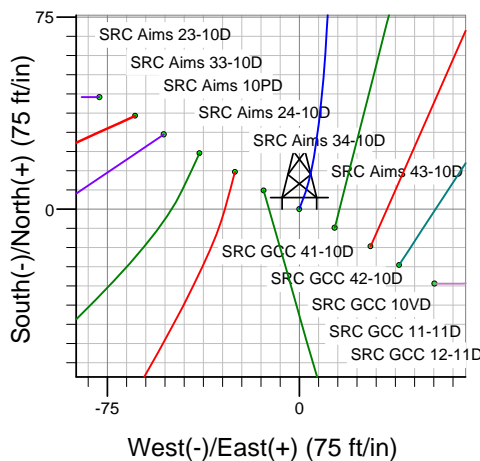
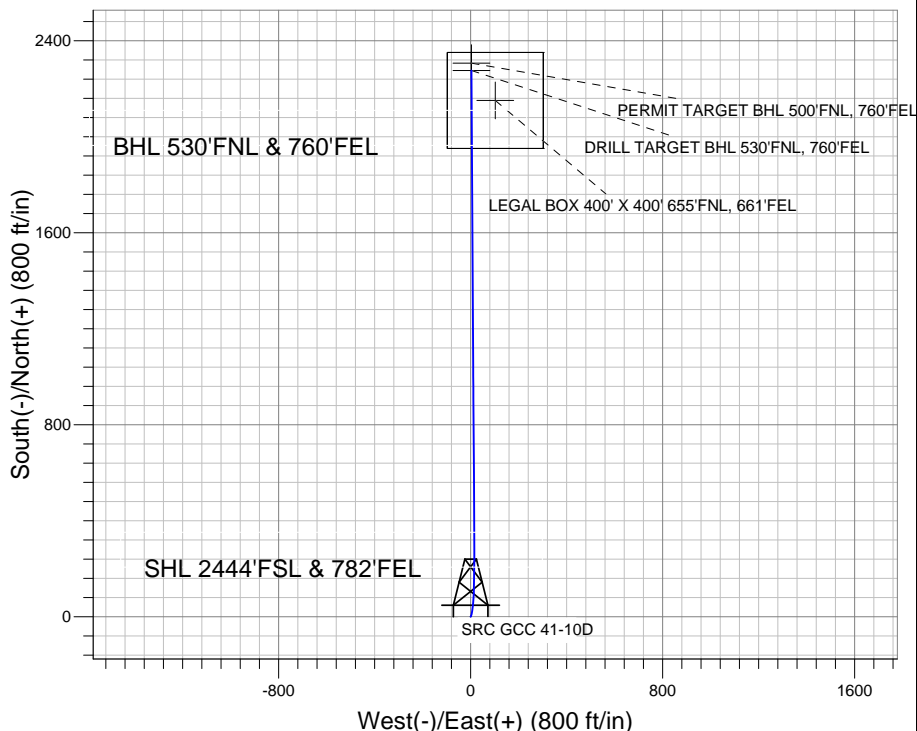
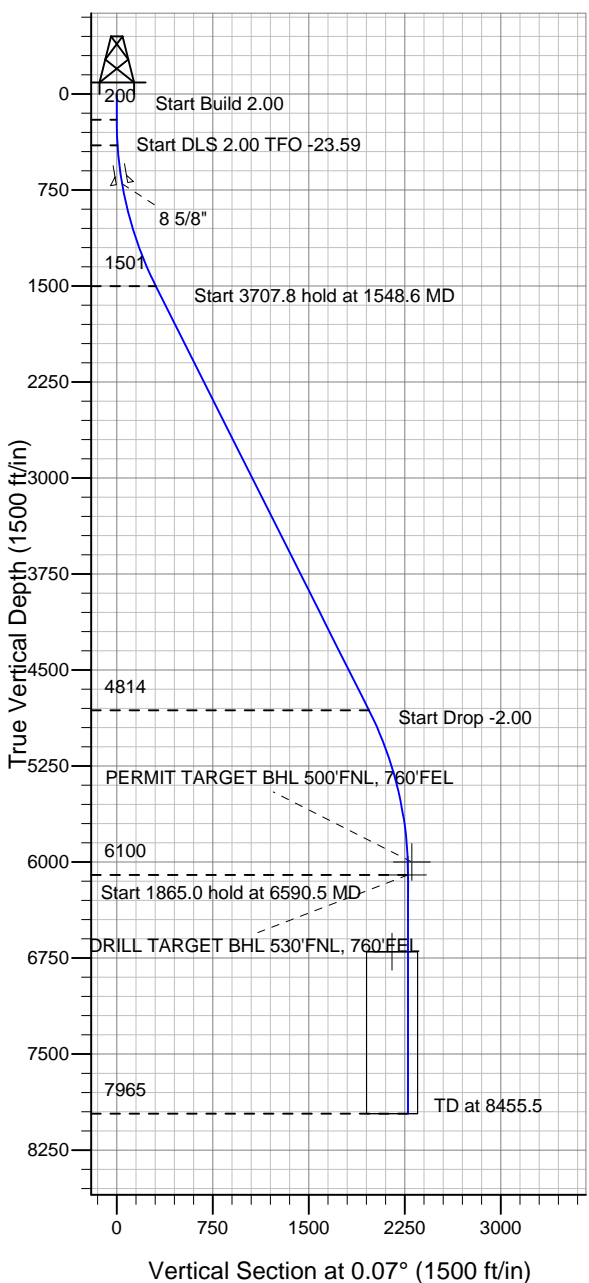
Surface Location: SRC Aims/GCC Pad Sec.10-T5N-R66W
 North American Datum 1983 US State Plane 1983 Wyoming Western Zone

Ground Elevation: 4858.0

+N/-S	+E/-W	Northing	Easting	Latitude	Longitude	Slot
0.0	0.0	341345.06	4107531.38	40.413600	-104.759099	

Original Well Elev WELL @ 4871.0ft (Original Well Elev)

Synergy Resources



SRC Aims/GCC Pad Sec.10-T5N-R66W
 SRC GCC 41-10D
 Plan #2 (9-21-11)
 13:31, October 05 2011



Azimuths to True North
 Magnetic North: 8.82°

Magnetic Field
 Strength: 53106.6snT
 Dip Angle: 67.05°
 Date: 10/5/2011
 Model: IGRF2010

WELLBORE TARGET DETAILS (LAT/LONG)

Name	TVD	+N/-S	+E/-W	Latitude	Longitude	Shape
PERMIT TARGET BHL 500'FNL, 760'FEL	6000.0	2306.1	2.6	40.419930	-104.759090	Point
DRILL TARGET BHL 530'FNL, 760'FEL	6100.0	2276.1	2.6	40.419848	-104.759090	Point
LEGAL BOX 400' X 400' 655'FNL, 661'FEL	6700.0	2151.1	101.6	40.419505	-104.758734	Rectangle (Sides: L400.0 W400.0)

SECTION DETAILS

Sec	MD	Inc	Azi	TVD	+N/-S	+E/-W	DLeg	TFace	VSec	Target
1	0.0	0.00	0.00	0.0	0.0	0.0	0.00	0.00	0.0	
2	200.0	0.00	0.00	200.0	0.0	0.0	0.00	0.00	0.0	
3	400.0	4.00	20.00	399.8	6.6	2.4	2.00	20.00	6.6	
4	1548.6	26.68	359.65	1500.7	306.1	14.7	2.00	-23.59	306.1	
5	5256.3	26.68	359.65	4813.6	1971.1	4.5	0.00	0.00	1971.1	
6	6590.5	0.00	0.00	6100.0	2276.1	2.6	2.00	180.00	2276.1	DRILL TARGET BHL 530'FNL, 760'FEL
7	8455.5	0.00	0.00	7965.0	2276.1	2.6	0.00	0.00	2276.1	



Directional

Synergy Resources

SEC.10-T5N-R66W

SRC Aims/GCC Pad Sec.10-T5N-R66W

SRC GCC 41-10D

Wellbore #1

Plan: Plan #2 (9-21-11)

Standard Planning Report

05 October, 2011

Plan Sections										
Measured Depth (ft)	Inclination (°)	Azimuth (°)	Vertical Depth (ft)	+N/-S (ft)	+E/-W (ft)	Dogleg Rate (°/100ft)	Build Rate (°/100ft)	Turn Rate (°/100ft)	TFO (°)	Target
0.0	0.00	0.00	0.0	0.0	0.0	0.00	0.00	0.00	0.00	
200.0	0.00	0.00	200.0	0.0	0.0	0.00	0.00	0.00	0.00	
400.0	4.00	20.00	399.8	6.6	2.4	2.00	2.00	0.00	20.00	
1,548.6	26.68	359.65	1,500.7	306.1	14.7	2.00	1.97	-1.77	-23.59	
5,256.3	26.68	359.65	4,813.6	1,971.1	4.5	0.00	0.00	0.00	0.00	
6,590.5	0.00	0.00	6,100.0	2,276.1	2.6	2.00	-2.00	0.00	180.00	DRILL TARGET BHT
8,455.5	0.00	0.00	7,965.0	2,276.1	2.6	0.00	0.00	0.00	0.00	

Database:	Landmark	Local Co-ordinate Reference:	Well SRC GCC 41-10D
Company:	Synergy Resources	TVD Reference:	WELL @ 4871.0ft (Original Well Elev)
Project:	SEC.10-T5N-R66W	MD Reference:	WELL @ 4871.0ft (Original Well Elev)
Site:	SRC Aims/GCC Pad Sec.10-T5N-R66W	North Reference:	True
Well:	SRC GCC 41-10D	Survey Calculation Method:	Minimum Curvature
Wellbore:	Wellbore #1		
Design:	Plan #2 (9-21-11)		

Planned Survey									
Measured Depth (ft)	Inclination (°)	Azimuth (°)	Vertical Depth (ft)	+N/-S (ft)	+E/-W (ft)	Vertical Section (ft)	Dogleg Rate (°/100ft)	Build Rate (°/100ft)	Turn Rate (°/100ft)
0.0	0.00	0.00	0.0	0.0	0.0	0.0	0.00	0.00	0.00
40.0	0.00	0.00	40.0	0.0	0.0	0.0	0.00	0.00	0.00
80.0	0.00	0.00	80.0	0.0	0.0	0.0	0.00	0.00	0.00
120.0	0.00	0.00	120.0	0.0	0.0	0.0	0.00	0.00	0.00
160.0	0.00	0.00	160.0	0.0	0.0	0.0	0.00	0.00	0.00
200.0	0.00	0.00	200.0	0.0	0.0	0.0	0.00	0.00	0.00
240.0	0.80	20.00	240.0	0.3	0.1	0.3	2.00	2.00	0.00
280.0	1.60	20.00	280.0	1.0	0.4	1.1	2.00	2.00	0.00
320.0	2.40	20.00	320.0	2.4	0.9	2.4	2.00	2.00	0.00
360.0	3.20	20.00	359.9	4.2	1.5	4.2	2.00	2.00	0.00
400.0	4.00	20.00	399.8	6.6	2.4	6.6	2.00	2.00	0.00
440.0	4.74	16.13	439.7	9.5	3.3	9.5	2.00	1.86	-9.68
480.0	5.50	13.31	479.6	12.9	4.2	12.9	2.00	1.90	-7.04
520.0	6.27	11.18	519.3	16.9	5.1	16.9	2.00	1.92	-5.33
560.0	7.05	9.51	559.1	21.5	5.9	21.5	2.00	1.94	-4.16
600.0	7.83	8.18	598.7	26.6	6.7	26.6	2.00	1.95	-3.34
640.0	8.62	7.08	638.3	32.3	7.5	32.3	2.00	1.96	-2.74
680.0	9.40	6.17	677.8	38.5	8.2	38.5	2.00	1.97	-2.28
702.5	9.85	5.72	700.0	42.2	8.6	42.2	2.00	1.97	-2.00
8 5/8"									
720.0	10.19	5.40	717.3	45.3	8.9	45.3	2.00	1.97	-1.85
760.0	10.98	4.74	756.6	52.6	9.5	52.6	2.00	1.98	-1.66
800.0	11.77	4.16	795.8	60.5	10.1	60.5	2.00	1.98	-1.44
840.0	12.57	3.66	834.9	68.9	10.7	68.9	2.00	1.98	-1.26
880.0	13.36	3.22	873.9	77.8	11.2	77.8	2.00	1.98	-1.11
920.0	14.16	2.82	912.7	87.3	11.7	87.3	2.00	1.99	-0.99
960.0	14.95	2.47	951.4	97.4	12.2	97.4	2.00	1.99	-0.88
1,000.0	15.75	2.15	990.0	107.9	12.6	108.0	2.00	1.99	-0.80
1,040.0	16.54	1.86	1,028.4	119.1	13.0	119.1	2.00	1.99	-0.72
1,080.0	17.34	1.60	1,066.7	130.7	13.4	130.7	2.00	1.99	-0.66
1,120.0	18.14	1.35	1,104.8	142.9	13.7	142.9	2.00	1.99	-0.60
1,160.0	18.93	1.13	1,142.7	155.6	14.0	155.6	2.00	1.99	-0.55
1,200.0	19.73	0.93	1,180.5	168.8	14.2	168.9	2.00	1.99	-0.51
1,240.0	20.53	0.74	1,218.0	182.6	14.4	182.6	2.00	1.99	-0.47
1,280.0	21.32	0.57	1,255.4	196.9	14.6	196.9	2.00	1.99	-0.44
1,320.0	22.12	0.40	1,292.5	211.7	14.7	211.7	2.00	1.99	-0.41
1,360.0	22.92	0.25	1,329.5	227.0	14.8	227.0	2.00	1.99	-0.38
1,400.0	23.72	0.11	1,366.2	242.9	14.8	242.9	2.00	2.00	-0.36
1,440.0	24.52	359.97	1,402.7	259.2	14.8	259.2	2.00	2.00	-0.33
1,480.0	25.31	359.85	1,439.0	276.0	14.8	276.1	2.00	2.00	-0.31
1,520.0	26.11	359.73	1,475.0	293.4	14.7	293.4	2.00	2.00	-0.30
1,548.6	26.68	359.65	1,500.7	306.1	14.7	306.1	2.00	2.00	-0.28
1,560.0	26.68	359.65	1,510.8	311.2	14.6	311.3	0.00	0.00	0.00
1,600.0	26.68	359.65	1,546.6	329.2	14.5	329.2	0.00	0.00	0.00
1,640.0	26.68	359.65	1,582.3	347.2	14.4	347.2	0.00	0.00	0.00
1,680.0	26.68	359.65	1,618.1	365.1	14.3	365.1	0.00	0.00	0.00
1,720.0	26.68	359.65	1,653.8	383.1	14.2	383.1	0.00	0.00	0.00
1,760.0	26.68	359.65	1,689.6	401.0	14.1	401.1	0.00	0.00	0.00
1,800.0	26.68	359.65	1,725.3	419.0	14.0	419.0	0.00	0.00	0.00
1,840.0	26.68	359.65	1,761.0	437.0	13.9	437.0	0.00	0.00	0.00
1,880.0	26.68	359.65	1,796.8	454.9	13.8	454.9	0.00	0.00	0.00
1,920.0	26.68	359.65	1,832.5	472.9	13.7	472.9	0.00	0.00	0.00
1,960.0	26.68	359.65	1,868.3	490.9	13.5	490.9	0.00	0.00	0.00
2,000.0	26.68	359.65	1,904.0	508.8	13.4	508.8	0.00	0.00	0.00

Database:	Landmark	Local Co-ordinate Reference:	Well SRC GCC 41-10D
Company:	Synergy Resources	TVD Reference:	WELL @ 4871.0ft (Original Well Elev)
Project:	SEC.10-T5N-R66W	MD Reference:	WELL @ 4871.0ft (Original Well Elev)
Site:	SRC Aims/GCC Pad Sec.10-T5N-R66W	North Reference:	True
Well:	SRC GCC 41-10D	Survey Calculation Method:	Minimum Curvature
Wellbore:	Wellbore #1		
Design:	Plan #2 (9-21-11)		

Planned Survey									
Measured Depth (ft)	Inclination (°)	Azimuth (°)	Vertical Depth (ft)	+N/-S (ft)	+E/-W (ft)	Vertical Section (ft)	Dogleg Rate (°/100ft)	Build Rate (°/100ft)	Turn Rate (°/100ft)
2,040.0	26.68	359.65	1,939.7	526.8	13.3	526.8	0.00	0.00	0.00
2,080.0	26.68	359.65	1,975.5	544.7	13.2	544.8	0.00	0.00	0.00
2,120.0	26.68	359.65	2,011.2	562.7	13.1	562.7	0.00	0.00	0.00
2,160.0	26.68	359.65	2,047.0	580.7	13.0	580.7	0.00	0.00	0.00
2,200.0	26.68	359.65	2,082.7	598.6	12.9	598.6	0.00	0.00	0.00
2,240.0	26.68	359.65	2,118.4	616.6	12.8	616.6	0.00	0.00	0.00
2,280.0	26.68	359.65	2,154.2	634.5	12.7	634.6	0.00	0.00	0.00
2,320.0	26.68	359.65	2,189.9	652.5	12.6	652.5	0.00	0.00	0.00
2,360.0	26.68	359.65	2,225.7	670.5	12.4	670.5	0.00	0.00	0.00
2,400.0	26.68	359.65	2,261.4	688.4	12.3	688.4	0.00	0.00	0.00
2,440.0	26.68	359.65	2,297.1	706.4	12.2	706.4	0.00	0.00	0.00
2,480.0	26.68	359.65	2,332.9	724.4	12.1	724.4	0.00	0.00	0.00
2,520.0	26.68	359.65	2,368.6	742.3	12.0	742.3	0.00	0.00	0.00
2,560.0	26.68	359.65	2,404.4	760.3	11.9	760.3	0.00	0.00	0.00
2,600.0	26.68	359.65	2,440.1	778.2	11.8	778.3	0.00	0.00	0.00
2,640.0	26.68	359.65	2,475.8	796.2	11.7	796.2	0.00	0.00	0.00
2,680.0	26.68	359.65	2,511.6	814.2	11.6	814.2	0.00	0.00	0.00
2,720.0	26.68	359.65	2,547.3	832.1	11.5	832.1	0.00	0.00	0.00
2,760.0	26.68	359.65	2,583.1	850.1	11.3	850.1	0.00	0.00	0.00
2,800.0	26.68	359.65	2,618.8	868.1	11.2	868.1	0.00	0.00	0.00
2,840.0	26.68	359.65	2,654.5	886.0	11.1	886.0	0.00	0.00	0.00
2,880.0	26.68	359.65	2,690.3	904.0	11.0	904.0	0.00	0.00	0.00
2,920.0	26.68	359.65	2,726.0	921.9	10.9	921.9	0.00	0.00	0.00
2,960.0	26.68	359.65	2,761.8	939.9	10.8	939.9	0.00	0.00	0.00
3,000.0	26.68	359.65	2,797.5	957.9	10.7	957.9	0.00	0.00	0.00
3,040.0	26.68	359.65	2,833.2	975.8	10.6	975.8	0.00	0.00	0.00
3,080.0	26.68	359.65	2,869.0	993.8	10.5	993.8	0.00	0.00	0.00
3,120.0	26.68	359.65	2,904.7	1,011.7	10.4	1,011.8	0.00	0.00	0.00
3,160.0	26.68	359.65	2,940.5	1,029.7	10.2	1,029.7	0.00	0.00	0.00
3,200.0	26.68	359.65	2,976.2	1,047.7	10.1	1,047.7	0.00	0.00	0.00
3,240.0	26.68	359.65	3,011.9	1,065.6	10.0	1,065.6	0.00	0.00	0.00
3,280.0	26.68	359.65	3,047.7	1,083.6	9.9	1,083.6	0.00	0.00	0.00
3,320.0	26.68	359.65	3,083.4	1,101.6	9.8	1,101.6	0.00	0.00	0.00
3,360.0	26.68	359.65	3,119.2	1,119.5	9.7	1,119.5	0.00	0.00	0.00
3,400.0	26.68	359.65	3,154.9	1,137.5	9.6	1,137.5	0.00	0.00	0.00
3,440.0	26.68	359.65	3,190.6	1,155.4	9.5	1,155.5	0.00	0.00	0.00
3,480.0	26.68	359.65	3,226.4	1,173.4	9.4	1,173.4	0.00	0.00	0.00
3,520.0	26.68	359.65	3,262.1	1,191.4	9.3	1,191.4	0.00	0.00	0.00
3,560.0	26.68	359.65	3,297.9	1,209.3	9.1	1,209.3	0.00	0.00	0.00
3,600.0	26.68	359.65	3,333.6	1,227.3	9.0	1,227.3	0.00	0.00	0.00
3,640.0	26.68	359.65	3,369.3	1,245.2	8.9	1,245.3	0.00	0.00	0.00
3,680.0	26.68	359.65	3,405.1	1,263.2	8.8	1,263.2	0.00	0.00	0.00
3,720.0	26.68	359.65	3,440.8	1,281.2	8.7	1,281.2	0.00	0.00	0.00
3,760.0	26.68	359.65	3,476.6	1,299.1	8.6	1,299.1	0.00	0.00	0.00
3,800.0	26.68	359.65	3,512.3	1,317.1	8.5	1,317.1	0.00	0.00	0.00
3,840.0	26.68	359.65	3,548.0	1,335.1	8.4	1,335.1	0.00	0.00	0.00
3,880.0	26.68	359.65	3,583.8	1,353.0	8.3	1,353.0	0.00	0.00	0.00
3,920.0	26.68	359.65	3,619.5	1,371.0	8.2	1,371.0	0.00	0.00	0.00
3,960.0	26.68	359.65	3,655.3	1,388.9	8.0	1,389.0	0.00	0.00	0.00
4,000.0	26.68	359.65	3,691.0	1,406.9	7.9	1,406.9	0.00	0.00	0.00
4,040.0	26.68	359.65	3,726.7	1,424.9	7.8	1,424.9	0.00	0.00	0.00
4,080.0	26.68	359.65	3,762.5	1,442.8	7.7	1,442.8	0.00	0.00	0.00
4,120.0	26.68	359.65	3,798.2	1,460.8	7.6	1,460.8	0.00	0.00	0.00
4,160.0	26.68	359.65	3,834.0	1,478.8	7.5	1,478.8	0.00	0.00	0.00

Database:	Landmark	Local Co-ordinate Reference:	Well SRC GCC 41-10D
Company:	Synergy Resources	TVD Reference:	WELL @ 4871.0ft (Original Well Elev)
Project:	SEC.10-T5N-R66W	MD Reference:	WELL @ 4871.0ft (Original Well Elev)
Site:	SRC Aims/GCC Pad Sec.10-T5N-R66W	North Reference:	True
Well:	SRC GCC 41-10D	Survey Calculation Method:	Minimum Curvature
Wellbore:	Wellbore #1		
Design:	Plan #2 (9-21-11)		

Planned Survey									
Measured Depth (ft)	Inclination (°)	Azimuth (°)	Vertical Depth (ft)	+N/-S (ft)	+E/-W (ft)	Vertical Section (ft)	Dogleg Rate (°/100ft)	Build Rate (°/100ft)	Turn Rate (°/100ft)
4,200.0	26.68	359.65	3,869.7	1,496.7	7.4	1,496.7	0.00	0.00	0.00
4,240.0	26.68	359.65	3,905.4	1,514.7	7.3	1,514.7	0.00	0.00	0.00
4,280.0	26.68	359.65	3,941.2	1,532.6	7.2	1,532.6	0.00	0.00	0.00
4,320.0	26.68	359.65	3,976.9	1,550.6	7.1	1,550.6	0.00	0.00	0.00
4,360.0	26.68	359.65	4,012.7	1,568.6	6.9	1,568.6	0.00	0.00	0.00
4,400.0	26.68	359.65	4,048.4	1,586.5	6.8	1,586.5	0.00	0.00	0.00
4,440.0	26.68	359.65	4,084.1	1,604.5	6.7	1,604.5	0.00	0.00	0.00
4,480.0	26.68	359.65	4,119.9	1,622.4	6.6	1,622.5	0.00	0.00	0.00
4,520.0	26.68	359.65	4,155.6	1,640.4	6.5	1,640.4	0.00	0.00	0.00
4,560.0	26.68	359.65	4,191.4	1,658.4	6.4	1,658.4	0.00	0.00	0.00
4,600.0	26.68	359.65	4,227.1	1,676.3	6.3	1,676.3	0.00	0.00	0.00
4,640.0	26.68	359.65	4,262.8	1,694.3	6.2	1,694.3	0.00	0.00	0.00
4,680.0	26.68	359.65	4,298.6	1,712.3	6.1	1,712.3	0.00	0.00	0.00
4,720.0	26.68	359.65	4,334.3	1,730.2	6.0	1,730.2	0.00	0.00	0.00
4,760.0	26.68	359.65	4,370.1	1,748.2	5.8	1,748.2	0.00	0.00	0.00
4,800.0	26.68	359.65	4,405.8	1,766.1	5.7	1,766.1	0.00	0.00	0.00
4,840.0	26.68	359.65	4,441.5	1,784.1	5.6	1,784.1	0.00	0.00	0.00
4,880.0	26.68	359.65	4,477.3	1,802.1	5.5	1,802.1	0.00	0.00	0.00
4,920.0	26.68	359.65	4,513.0	1,820.0	5.4	1,820.0	0.00	0.00	0.00
4,960.0	26.68	359.65	4,548.8	1,838.0	5.3	1,838.0	0.00	0.00	0.00
5,000.0	26.68	359.65	4,584.5	1,856.0	5.2	1,856.0	0.00	0.00	0.00
5,040.0	26.68	359.65	4,620.2	1,873.9	5.1	1,873.9	0.00	0.00	0.00
5,080.0	26.68	359.65	4,656.0	1,891.9	5.0	1,891.9	0.00	0.00	0.00
5,120.0	26.68	359.65	4,691.7	1,909.8	4.9	1,909.8	0.00	0.00	0.00
5,160.0	26.68	359.65	4,727.5	1,927.8	4.7	1,927.8	0.00	0.00	0.00
5,200.0	26.68	359.65	4,763.2	1,945.8	4.6	1,945.8	0.00	0.00	0.00
5,240.0	26.68	359.65	4,798.9	1,963.7	4.5	1,963.7	0.00	0.00	0.00
5,256.3	26.68	359.65	4,813.6	1,971.1	4.5	1,971.1	0.00	0.00	0.00
5,280.0	26.21	359.65	4,834.7	1,981.6	4.4	1,981.6	2.00	-2.00	0.00
5,320.0	25.41	359.65	4,870.7	1,999.0	4.3	1,999.0	2.00	-2.00	0.00
5,360.0	24.61	359.65	4,907.0	2,015.9	4.2	2,015.9	2.00	-2.00	0.00
5,400.0	23.81	359.65	4,943.5	2,032.3	4.1	2,032.3	2.00	-2.00	0.00
5,440.0	23.01	359.65	4,980.2	2,048.2	4.0	2,048.2	2.00	-2.00	0.00
5,480.0	22.21	359.65	5,017.1	2,063.6	3.9	2,063.6	2.00	-2.00	0.00
5,520.0	21.41	359.65	5,054.2	2,078.5	3.8	2,078.5	2.00	-2.00	0.00
5,560.0	20.61	359.65	5,091.6	2,092.8	3.7	2,092.8	2.00	-2.00	0.00
5,600.0	19.81	359.65	5,129.1	2,106.6	3.7	2,106.6	2.00	-2.00	0.00
5,640.0	19.01	359.65	5,166.8	2,119.9	3.6	2,119.9	2.00	-2.00	0.00
5,680.0	18.21	359.65	5,204.8	2,132.7	3.5	2,132.7	2.00	-2.00	0.00
5,720.0	17.41	359.65	5,242.8	2,144.9	3.4	2,144.9	2.00	-2.00	0.00
5,760.0	16.61	359.65	5,281.1	2,156.6	3.3	2,156.6	2.00	-2.00	0.00
5,800.0	15.81	359.65	5,319.5	2,167.8	3.3	2,167.8	2.00	-2.00	0.00
5,840.0	15.01	359.65	5,358.1	2,178.4	3.2	2,178.4	2.00	-2.00	0.00
5,880.0	14.21	359.65	5,396.8	2,188.5	3.2	2,188.5	2.00	-2.00	0.00
5,920.0	13.41	359.65	5,435.6	2,198.0	3.1	2,198.0	2.00	-2.00	0.00
5,960.0	12.61	359.65	5,474.6	2,207.0	3.0	2,207.0	2.00	-2.00	0.00
6,000.0	11.81	359.65	5,513.7	2,215.5	3.0	2,215.5	2.00	-2.00	0.00
6,040.0	11.01	359.65	5,552.9	2,223.4	2.9	2,223.4	2.00	-2.00	0.00
6,080.0	10.21	359.65	5,592.2	2,230.8	2.9	2,230.8	2.00	-2.00	0.00
6,120.0	9.41	359.65	5,631.6	2,237.6	2.9	2,237.6	2.00	-2.00	0.00
6,160.0	8.61	359.65	5,671.1	2,243.9	2.8	2,243.9	2.00	-2.00	0.00
6,200.0	7.81	359.65	5,710.7	2,249.6	2.8	2,249.6	2.00	-2.00	0.00
6,240.0	7.01	359.65	5,750.4	2,254.7	2.7	2,254.7	2.00	-2.00	0.00
6,280.0	6.21	359.65	5,790.1	2,259.3	2.7	2,259.3	2.00	-2.00	0.00

Database:	Landmark	Local Co-ordinate Reference:	Well SRC GCC 41-10D
Company:	Synergy Resources	TVD Reference:	WELL @ 4871.0ft (Original Well Elev)
Project:	SEC.10-T5N-R66W	MD Reference:	WELL @ 4871.0ft (Original Well Elev)
Site:	SRC Aims/GCC Pad Sec.10-T5N-R66W	North Reference:	True
Well:	SRC GCC 41-10D	Survey Calculation Method:	Minimum Curvature
Wellbore:	Wellbore #1		
Design:	Plan #2 (9-21-11)		

Planned Survey									
Measured Depth (ft)	Inclination (°)	Azimuth (°)	Vertical Depth (ft)	+N/-S (ft)	+E/-W (ft)	Vertical Section (ft)	Dogleg Rate (°/100ft)	Build Rate (°/100ft)	Turn Rate (°/100ft)
6,320.0	5.41	359.65	5,829.9	2,263.4	2.7	2,263.4	2.00	-2.00	0.00
6,360.0	4.61	359.65	5,869.7	2,266.9	2.7	2,266.9	2.00	-2.00	0.00
6,400.0	3.81	359.65	5,909.6	2,269.8	2.7	2,269.8	2.00	-2.00	0.00
6,440.0	3.01	359.65	5,949.6	2,272.2	2.6	2,272.2	2.00	-2.00	0.00
6,480.0	2.21	359.65	5,989.5	2,274.0	2.6	2,274.0	2.00	-2.00	0.00
6,491.5	1.98	359.65	6,001.0	2,274.4	2.6	2,274.4	2.00	-2.00	0.00
PERMIT TARGET BHL 500'FNL, 760'FEL									
6,520.0	1.41	359.65	6,029.5	2,275.3	2.6	2,275.3	2.00	-2.00	0.00
6,560.0	0.61	359.65	6,069.5	2,276.0	2.6	2,276.0	2.00	-2.00	0.00
6,590.5	0.00	0.00	6,100.0	2,276.1	2.6	2,276.1	2.00	-2.00	0.00
DRILL TARGET BHL 530'FNL, 760'FEL									
6,600.0	0.00	0.00	6,109.5	2,276.1	2.6	2,276.1	0.00	0.00	0.00
6,640.0	0.00	0.00	6,149.5	2,276.1	2.6	2,276.1	0.00	0.00	0.00
6,680.0	0.00	0.00	6,189.5	2,276.1	2.6	2,276.1	0.00	0.00	0.00
6,720.0	0.00	0.00	6,229.5	2,276.1	2.6	2,276.1	0.00	0.00	0.00
6,760.0	0.00	0.00	6,269.5	2,276.1	2.6	2,276.1	0.00	0.00	0.00
6,800.0	0.00	0.00	6,309.5	2,276.1	2.6	2,276.1	0.00	0.00	0.00
6,840.0	0.00	0.00	6,349.5	2,276.1	2.6	2,276.1	0.00	0.00	0.00
6,880.0	0.00	0.00	6,389.5	2,276.1	2.6	2,276.1	0.00	0.00	0.00
6,920.0	0.00	0.00	6,429.5	2,276.1	2.6	2,276.1	0.00	0.00	0.00
6,960.0	0.00	0.00	6,469.5	2,276.1	2.6	2,276.1	0.00	0.00	0.00
7,000.0	0.00	0.00	6,509.5	2,276.1	2.6	2,276.1	0.00	0.00	0.00
7,040.0	0.00	0.00	6,549.5	2,276.1	2.6	2,276.1	0.00	0.00	0.00
7,080.0	0.00	0.00	6,589.5	2,276.1	2.6	2,276.1	0.00	0.00	0.00
7,120.0	0.00	0.00	6,629.5	2,276.1	2.6	2,276.1	0.00	0.00	0.00
7,160.0	0.00	0.00	6,669.5	2,276.1	2.6	2,276.1	0.00	0.00	0.00
7,190.5	0.00	0.00	6,700.0	2,276.1	2.6	2,276.1	0.00	0.00	0.00
LEGAL BOX 400' X 400' 655'FNL, 661'FEL									
7,200.0	0.00	0.00	6,709.5	2,276.1	2.6	2,276.1	0.00	0.00	0.00
7,240.0	0.00	0.00	6,749.5	2,276.1	2.6	2,276.1	0.00	0.00	0.00
7,280.0	0.00	0.00	6,789.5	2,276.1	2.6	2,276.1	0.00	0.00	0.00
7,320.0	0.00	0.00	6,829.5	2,276.1	2.6	2,276.1	0.00	0.00	0.00
7,360.0	0.00	0.00	6,869.5	2,276.1	2.6	2,276.1	0.00	0.00	0.00
7,400.0	0.00	0.00	6,909.5	2,276.1	2.6	2,276.1	0.00	0.00	0.00
7,440.0	0.00	0.00	6,949.5	2,276.1	2.6	2,276.1	0.00	0.00	0.00
7,480.0	0.00	0.00	6,989.5	2,276.1	2.6	2,276.1	0.00	0.00	0.00
7,520.0	0.00	0.00	7,029.5	2,276.1	2.6	2,276.1	0.00	0.00	0.00
7,560.0	0.00	0.00	7,069.5	2,276.1	2.6	2,276.1	0.00	0.00	0.00
7,600.0	0.00	0.00	7,109.5	2,276.1	2.6	2,276.1	0.00	0.00	0.00
7,640.0	0.00	0.00	7,149.5	2,276.1	2.6	2,276.1	0.00	0.00	0.00
7,680.0	0.00	0.00	7,189.5	2,276.1	2.6	2,276.1	0.00	0.00	0.00
7,720.0	0.00	0.00	7,229.5	2,276.1	2.6	2,276.1	0.00	0.00	0.00
7,760.0	0.00	0.00	7,269.5	2,276.1	2.6	2,276.1	0.00	0.00	0.00
7,800.0	0.00	0.00	7,309.5	2,276.1	2.6	2,276.1	0.00	0.00	0.00
7,840.0	0.00	0.00	7,349.5	2,276.1	2.6	2,276.1	0.00	0.00	0.00
7,880.0	0.00	0.00	7,389.5	2,276.1	2.6	2,276.1	0.00	0.00	0.00
7,920.0	0.00	0.00	7,429.5	2,276.1	2.6	2,276.1	0.00	0.00	0.00
7,960.0	0.00	0.00	7,469.5	2,276.1	2.6	2,276.1	0.00	0.00	0.00
8,000.0	0.00	0.00	7,509.5	2,276.1	2.6	2,276.1	0.00	0.00	0.00
8,040.0	0.00	0.00	7,549.5	2,276.1	2.6	2,276.1	0.00	0.00	0.00
8,080.0	0.00	0.00	7,589.5	2,276.1	2.6	2,276.1	0.00	0.00	0.00
8,120.0	0.00	0.00	7,629.5	2,276.1	2.6	2,276.1	0.00	0.00	0.00
8,160.0	0.00	0.00	7,669.5	2,276.1	2.6	2,276.1	0.00	0.00	0.00

Database:	Landmark	Local Co-ordinate Reference:	Well SRC GCC 41-10D
Company:	Synergy Resources	TVD Reference:	WELL @ 4871.0ft (Original Well Elev)
Project:	SEC.10-T5N-R66W	MD Reference:	WELL @ 4871.0ft (Original Well Elev)
Site:	SRC Aims/GCC Pad Sec.10-T5N-R66W	North Reference:	True
Well:	SRC GCC 41-10D	Survey Calculation Method:	Minimum Curvature
Wellbore:	Wellbore #1		
Design:	Plan #2 (9-21-11)		

Planned Survey										
Measured Depth (ft)	Inclination (°)	Azimuth (°)	Vertical Depth (ft)	+N/-S (ft)	+E/-W (ft)	Vertical Section (ft)	Dogleg Rate (°/100ft)	Build Rate (°/100ft)	Turn Rate (°/100ft)	
8,200.0	0.00	0.00	7,709.5	2,276.1	2.6	2,276.1	0.00	0.00	0.00	
8,240.0	0.00	0.00	7,749.5	2,276.1	2.6	2,276.1	0.00	0.00	0.00	
8,280.0	0.00	0.00	7,789.5	2,276.1	2.6	2,276.1	0.00	0.00	0.00	
8,320.0	0.00	0.00	7,829.5	2,276.1	2.6	2,276.1	0.00	0.00	0.00	
8,360.0	0.00	0.00	7,869.5	2,276.1	2.6	2,276.1	0.00	0.00	0.00	
8,400.0	0.00	0.00	7,909.5	2,276.1	2.6	2,276.1	0.00	0.00	0.00	
8,440.0	0.00	0.00	7,949.5	2,276.1	2.6	2,276.1	0.00	0.00	0.00	
8,455.5	0.00	0.00	7,965.0	2,276.1	2.6	2,276.1	0.00	0.00	0.00	

Targets										
Target Name	- hit/miss target	Dip Angle (°)	Dip Dir. (°)	TVD (ft)	+N/-S (ft)	+E/-W (ft)	Northing (ft)	Easting (ft)	Latitude	Longitude
PERMIT TARGET BH	- plan misses target center by 31.7ft at 6491.5ft MD (6001.0 TVD, 2274.4 N, 2.6 E)	0.00	0.00	6,000.0	2,306.1	2.6	343,652.78	4,107,394.61	40.419930	-104.759090
LEGAL BOX 400' X 400'	- Rectangle (sides W400.0 H400.0 D1,265.0)	0.00	0.00	6,700.0	2,151.1	101.6	343,503.70	4,107,503.07	40.419505	-104.758734
DRILL TARGET BHL	- plan hits target center	0.00	0.00	6,100.0	2,276.1	2.6	343,622.79	4,107,396.45	40.419848	-104.759090

Casing Points						
Measured Depth (ft)	Vertical Depth (ft)	Name	Casing Diameter (")	Hole Diameter (")		
702.5	700.0	8 5/8"	8-5/8	12-1/4		



Directional

Synergy Resources

SEC.10-T5N-R66W

SRC Aims/GCC Pad Sec.10-T5N-R66W

SRC GCC 41-10D

Wellbore #1

Plan #2 (9-21-11)

Anticollision Report

05 October, 2011

SRC Aims/GCC Pad Sec.10-T5N-R66W - SRC Aims 43-10D - Wellbore #1 - Plan #2 (9-21-11)													Offset Site Error:	0.0 ft
Survey Program: 0-MWD													Offset Well Error:	0.0 ft
Reference		Offset		Semi Major Axis			Distance							
Measured Depth (ft)	Vertical Depth (ft)	Measured Depth (ft)	Vertical Depth (ft)	Reference (ft)	Offset (ft)	Highside Toolface (°)	Offset Wellbore Centre +N/-S (ft)	+E/-W (ft)	Between Centres (ft)	Between Ellipses (ft)	Minimum Separation (ft)	Separation Factor	Warning	
2,000.0	1,904.0	1,798.9	1,781.0	10.4	5.7	177.22	-202.5	46.0	722.6	713.3	9.30	77.730		
2,100.0	1,993.3	1,879.3	1,860.1	11.2	6.0	177.08	-216.0	49.9	782.0	772.2	9.83	79.515		
2,200.0	2,082.7	1,959.7	1,939.3	12.1	6.3	176.97	-229.5	53.7	841.4	831.1	10.38	81.091		
2,300.0	2,172.0	2,040.1	2,018.5	13.0	6.6	176.87	-243.0	57.6	900.9	889.9	10.92	82.491		
2,400.0	2,261.4	2,120.5	2,097.7	13.8	7.0	176.78	-256.5	61.4	960.3	948.8	11.47	83.742		
2,500.0	2,350.7	2,200.9	2,176.8	14.7	7.3	176.71	-270.1	65.3	1,019.7	1,007.7	12.02	84.866		
2,600.0	2,440.1	2,281.4	2,256.0	15.5	7.6	176.64	-283.6	69.2	1,079.2	1,066.6	12.57	85.877		
2,700.0	2,529.4	2,361.8	2,335.2	16.4	7.9	176.58	-297.1	73.0	1,138.6	1,125.5	13.12	86.794		
2,800.0	2,618.8	2,442.2	2,414.4	17.3	8.3	176.52	-310.6	76.9	1,198.1	1,184.4	13.67	87.628		
2,900.0	2,708.1	2,522.6	2,493.5	18.1	8.6	176.47	-324.1	80.8	1,257.5	1,243.3	14.23	88.389		
3,000.0	2,797.5	2,603.0	2,572.7	19.0	8.9	176.43	-337.6	84.6	1,316.9	1,302.2	14.78	89.087		
3,100.0	2,886.8	2,683.4	2,651.9	19.9	9.2	176.39	-351.2	88.5	1,376.4	1,361.0	15.34	89.727		
3,200.0	2,976.2	2,763.8	2,731.1	20.7	9.6	176.35	-364.7	92.3	1,435.8	1,419.9	15.90	90.316		
3,300.0	3,065.5	2,844.3	2,810.2	21.6	9.9	176.31	-378.2	96.2	1,495.3	1,478.8	16.46	90.861		
3,400.0	3,154.9	2,924.7	2,889.4	22.5	10.2	176.28	-391.7	100.1	1,554.7	1,537.7	17.02	91.367		
3,500.0	3,244.2	3,005.1	2,968.6	23.3	10.5	176.25	-405.2	103.9	1,614.1	1,596.6	17.58	91.836		
3,600.0	3,333.6	3,085.5	3,047.8	24.2	10.9	176.22	-418.7	107.8	1,673.6	1,655.4	18.14	92.272		
3,700.0	3,422.9	3,206.6	3,167.2	25.1	11.3	176.19	-438.3	113.4	1,732.7	1,713.9	18.77	92.325		
3,800.0	3,512.3	3,416.3	3,375.4	25.9	11.8	176.23	-461.5	120.0	1,787.3	1,767.8	19.49	91.691		
3,900.0	3,601.6	3,642.8	3,601.6	26.8	12.1	176.40	-469.9	122.4	1,835.5	1,815.3	20.22	90.780		
4,000.0	3,691.0	3,732.1	3,691.0	27.7	12.2	176.49	-469.9	122.4	1,880.3	1,859.6	20.75	90.617		
4,100.0	3,780.4	3,821.5	3,780.4	28.5	12.4	176.57	-469.9	122.4	1,925.2	1,903.9	21.28	90.477		
4,200.0	3,869.7	3,910.8	3,869.7	29.4	12.5	176.65	-469.9	122.4	1,970.0	1,948.2	21.81	90.335		
4,300.0	3,959.1	4,000.2	3,959.1	30.3	12.6	176.72	-469.9	122.4	2,014.9	1,992.5	22.34	90.192		
4,400.0	4,048.4	4,089.5	4,048.4	31.2	12.7	176.79	-469.9	122.4	2,059.7	2,036.8	22.87	90.047		
4,500.0	4,137.8	4,178.9	4,137.8	32.0	12.8	176.86	-469.9	122.4	2,104.6	2,081.2	23.41	89.903		
4,600.0	4,227.1	4,268.2	4,227.1	32.9	12.9	176.93	-469.9	122.4	2,149.4	2,125.5	23.95	89.759		
4,700.0	4,316.5	4,357.6	4,316.5	33.8	13.0	176.99	-469.9	122.4	2,194.3	2,169.8	24.49	89.615		
4,800.0	4,405.8	4,446.9	4,405.8	34.6	13.1	177.05	-469.9	122.4	2,239.1	2,214.1	25.03	89.472		
4,900.0	4,495.2	4,536.3	4,495.2	35.5	13.3	177.11	-469.9	122.4	2,284.0	2,258.4	25.57	89.331		
5,000.0	4,584.5	4,625.6	4,584.5	36.4	13.4	177.16	-469.9	122.4	2,328.8	2,302.7	26.11	89.190		
5,100.0	4,673.9	4,715.0	4,673.9	37.2	13.5	177.22	-469.9	122.4	2,373.7	2,347.1	26.66	89.051		
5,200.0	4,763.2	4,804.3	4,763.2	38.1	13.6	177.27	-469.9	122.4	2,418.6	2,391.4	27.20	88.913		
5,256.3	4,813.6	4,854.7	4,813.6	38.6	13.7	177.30	-469.9	122.4	2,443.9	2,416.3	27.51	88.835		
5,300.0	4,852.7	4,893.8	4,852.7	38.9	13.8	177.34	-469.9	122.4	2,463.1	2,435.3	27.82	88.535		
5,400.0	4,943.5	4,984.6	4,943.5	39.5	13.9	177.42	-469.9	122.4	2,505.1	2,476.6	28.49	87.924		
5,500.0	5,035.6	5,076.8	5,035.6	40.1	14.0	177.50	-469.9	122.4	2,543.8	2,514.7	29.12	87.351		
5,600.0	5,129.1	5,170.2	5,129.1	40.7	14.2	177.57	-469.9	122.4	2,579.3	2,549.6	29.71	86.816		
5,700.0	5,223.8	5,264.9	5,223.8	41.2	14.3	177.63	-469.9	122.4	2,611.5	2,581.3	30.26	86.317		
5,800.0	5,319.5	5,360.6	5,319.5	41.7	14.5	177.68	-469.9	122.4	2,640.4	2,609.7	30.76	85.852		
5,900.0	5,416.2	5,457.3	5,416.2	42.1	14.6	177.72	-469.9	122.4	2,665.9	2,634.7	31.21	85.421		
6,000.0	5,513.7	5,554.8	5,513.7	42.4	14.8	177.76	-469.9	122.4	2,688.1	2,656.5	31.62	85.022		
6,100.0	5,611.9	5,653.0	5,611.9	42.8	14.9	177.79	-469.9	122.4	2,706.8	2,674.9	31.98	84.654		
6,200.0	5,710.7	5,751.8	5,710.7	43.1	15.1	177.81	-469.9	122.4	2,722.1	2,689.9	32.28	84.316		
6,300.0	5,810.0	5,851.1	5,810.0	43.3	15.3	177.83	-469.9	122.4	2,734.0	2,701.4	32.54	84.008		
6,400.0	5,909.6	5,950.8	5,909.6	43.5	15.4	177.84	-469.9	122.4	2,742.4	2,709.6	32.75	83.726		
6,500.0	6,009.5	6,050.6	6,009.5	43.6	15.6	177.85	-469.9	122.4	2,747.3	2,714.4	32.91	83.472		
6,590.5	6,100.0	6,141.1	6,100.0	43.7	15.7	177.50	-469.9	122.4	2,748.7	2,715.7	33.01	83.263		
6,600.0	6,109.5	6,150.6	6,109.5	43.7	15.8	177.50	-469.9	122.4	2,748.7	2,715.7	33.04	83.185		
6,700.0	6,209.5	6,250.6	6,209.5	43.7	15.9	177.50	-469.9	122.4	2,748.7	2,715.3	33.38	82.342		
6,800.0	6,309.5	6,350.6	6,309.5	43.8	16.1	177.50	-469.9	122.4	2,748.7	2,715.0	33.72	81.511		
6,900.0	6,409.5	6,450.6	6,409.5	43.9	16.3	177.50	-469.9	122.4	2,748.7	2,714.6	34.06	80.691		

Company:	Synergy Resources	Local Co-ordinate Reference:	Well SRC GCC 41-10D
Project:	SEC.10-T5N-R66W	TVD Reference:	WELL @ 4871.0ft (Original Well Elev)
Reference Site:	SRC Aims/GCC Pad Sec.10-T5N-R66W	MD Reference:	WELL @ 4871.0ft (Original Well Elev)
Site Error:	0.0ft	North Reference:	True
Reference Well:	SRC GCC 41-10D	Survey Calculation Method:	Minimum Curvature
Well Error:	0.0ft	Output errors are at	2.00 sigma
Reference Wellbore	Wellbore #1	Database:	Landmark
Reference Design:	Plan #2 (9-21-11)	Offset TVD Reference:	Offset Datum

Offset Design												Offset Site Error:	0.0 ft
SRC Aims/GCC Pad Sec.10-T5N-R66W - SRC Aims 43-10D - Wellbore #1 - Plan #2 (9-21-11)												Offset Well Error:	0.0 ft
Survey Program: 0-MWD													
Reference		Offset		Semi Major Axis			Distance						
Measured Depth (ft)	Vertical Depth (ft)	Measured Depth (ft)	Vertical Depth (ft)	Reference (ft)	Offset (ft)	Highside Toolface (°)	Offset Wellbore Centre +N/-S (ft)	+E/-W (ft)	Between Centres (ft)	Between Ellipses (ft)	Minimum Separation (ft)	Separation Factor	Warning
7,000.0	6,509.5	6,550.6	6,509.5	43.9	16.4	177.50	-469.9	122.4	2,748.7	2,714.3	34.41	79.882	
7,100.0	6,609.5	6,650.6	6,609.5	44.0	16.6	177.50	-469.9	122.4	2,748.7	2,713.9	34.76	79.085	
7,200.0	6,709.5	6,750.6	6,709.5	44.1	16.8	177.50	-469.9	122.4	2,748.7	2,713.6	35.11	78.298	
7,300.0	6,809.5	6,850.6	6,809.5	44.1	17.0	177.50	-469.9	122.4	2,748.7	2,713.2	35.46	77.523	
7,400.0	6,909.5	6,950.6	6,909.5	44.2	17.1	177.50	-469.9	122.4	2,748.7	2,712.9	35.81	76.759	
7,500.0	7,009.5	7,050.6	7,009.5	44.3	17.3	177.50	-469.9	122.4	2,748.7	2,712.5	36.16	76.006	
7,600.0	7,109.5	7,150.6	7,109.5	44.3	17.5	177.50	-469.9	122.4	2,748.7	2,712.2	36.52	75.263	
7,700.0	7,209.5	7,250.6	7,209.5	44.4	17.7	177.50	-469.9	122.4	2,748.7	2,711.8	36.88	74.531	
7,800.0	7,309.5	7,350.6	7,309.5	44.5	17.9	177.50	-469.9	122.4	2,748.7	2,711.5	37.24	73.810	
7,900.0	7,409.5	7,450.6	7,409.5	44.5	18.0	177.50	-469.9	122.4	2,748.7	2,711.1	37.60	73.100	
8,000.0	7,509.5	7,550.6	7,509.5	44.6	18.2	177.50	-469.9	122.4	2,748.7	2,710.7	37.97	72.399	
8,100.0	7,609.5	7,650.6	7,609.5	44.7	18.4	177.50	-469.9	122.4	2,748.7	2,710.4	38.33	71.709	
8,200.0	7,709.5	7,750.6	7,709.5	44.8	18.6	177.50	-469.9	122.4	2,748.7	2,710.0	38.70	71.029	
8,300.0	7,809.5	7,850.6	7,809.5	44.8	18.8	177.50	-469.9	122.4	2,748.7	2,709.6	39.07	70.359	
8,400.0	7,909.5	7,950.6	7,909.5	44.9	19.0	177.50	-469.9	122.4	2,748.7	2,709.3	39.44	69.699	
8,455.5	7,965.0	8,006.1	7,965.0	45.0	19.1	177.50	-469.9	122.4	2,748.7	2,709.1	39.64	69.337	

SRC Aims/GCC Pad Sec.10-T5N-R66W - SRC GCC 42-10D - Wellbore #1 - Plan #2 (9-21-11)												Offset Site Error:	0.0 ft
Survey Program: 0-MWD												Offset Well Error:	0.0 ft
Reference		Offset		Semi Major Axis			Distance						Warning
Measured Depth (ft)	Vertical Depth (ft)	Measured Depth (ft)	Vertical Depth (ft)	Reference (ft)	Offset (ft)	Highside Toolface (°)	Offset Wellbore Centre +N/-S (ft)	+E/-W (ft)	Between Centres (ft)	Between Ellipses (ft)	Minimum Separation (ft)	Separation Factor	
0.0	0.0	0.0	0.0	0.0	0.0	117.74	-7.3	13.9	15.7	15.7	0.00	N/A	
100.0	100.0	100.0	100.0	0.1	0.1	117.74	-7.3	13.9	15.7	15.4	0.22	69.672	
200.0	200.0	200.0	200.0	0.3	0.3	117.74	-7.3	13.9	15.7	15.0	0.67	23.224 CC	
300.0	300.0	300.0	300.0	0.6	0.6	103.95	-7.3	13.9	16.0	14.9	1.12	14.231 ES	
400.0	399.8	400.2	400.1	0.8	0.8	115.60	-5.6	14.3	17.0	15.4	1.58	10.768	
500.0	499.5	500.5	500.3	1.0	1.0	132.41	-0.5	15.6	18.9	16.8	2.05	9.190	
600.0	598.7	600.9	600.4	1.3	1.3	141.22	8.0	17.8	21.7	19.1	2.54	8.538	
700.0	697.6	701.4	700.1	1.6	1.5	145.17	19.9	20.8	25.2	22.2	3.06	8.253	
800.0	795.8	802.0	799.5	2.0	1.9	146.12	35.2	24.7	29.4	25.7	3.62	8.115	
900.0	893.3	902.4	898.0	2.4	2.2	145.57	53.6	29.4	34.3	30.1	4.24	8.086 SF	
1,000.0	990.0	1,002.1	995.8	2.9	2.6	146.79	72.5	34.2	41.9	37.0	4.89	8.572	
1,100.0	1,085.8	1,101.5	1,093.3	3.4	3.0	149.39	91.3	39.0	52.6	47.1	5.52	9.534	
1,200.0	1,180.5	1,200.5	1,190.4	4.0	3.4	152.37	110.0	43.7	66.6	60.4	6.13	10.858	
1,300.0	1,274.0	1,298.9	1,286.9	4.7	3.8	155.23	128.6	48.5	83.8	77.1	6.73	12.463	
1,400.0	1,366.2	1,396.7	1,382.8	5.4	4.2	157.75	147.1	53.2	104.4	97.1	7.31	14.290	
1,500.0	1,457.1	1,493.7	1,477.9	6.2	4.6	159.90	165.5	57.9	128.4	120.5	7.89	16.284	
1,548.6	1,500.7	1,540.5	1,523.8	6.6	4.8	160.82	174.4	60.1	141.3	133.1	8.17	17.304	
1,600.0	1,546.6	1,589.9	1,572.3	7.0	5.0	161.63	183.7	62.5	155.3	146.9	8.48	18.309	
1,700.0	1,635.9	1,686.0	1,666.6	7.8	5.4	162.84	201.9	67.1	182.7	173.6	9.12	20.044	
1,800.0	1,725.3	1,782.1	1,760.8	8.7	5.8	163.74	220.1	71.8	210.2	200.4	9.76	21.535	
1,900.0	1,814.6	1,878.3	1,855.1	9.5	6.2	164.43	238.3	76.4	237.7	227.2	10.41	22.829	
2,000.0	1,904.0	1,974.4	1,949.4	10.4	6.6	164.98	256.5	81.0	265.2	254.1	11.07	23.959	
2,100.0	1,993.3	2,070.5	2,043.6	11.2	7.0	165.42	274.6	85.7	292.7	281.0	11.73	24.955	
2,200.0	2,082.7	2,166.6	2,137.9	12.1	7.4	165.79	292.8	90.3	320.2	307.8	12.39	25.838	
2,300.0	2,172.0	2,262.7	2,232.2	13.0	7.8	166.10	311.0	94.9	347.8	334.7	13.06	26.625	
2,400.0	2,261.4	2,358.8	2,326.4	13.8	8.2	166.37	329.2	99.6	375.3	361.6	13.73	27.332	
2,500.0	2,350.7	2,454.9	2,420.7	14.7	8.6	166.59	347.4	104.2	402.9	388.5	14.41	27.969	
2,600.0	2,440.1	2,551.1	2,514.9	15.5	9.0	166.79	365.6	108.8	430.5	415.4	15.08	28.547	
2,700.0	2,529.4	2,647.2	2,609.2	16.4	9.4	166.97	383.8	113.5	458.0	442.3	15.76	29.073	
2,800.0	2,618.8	2,743.3	2,703.5	17.3	9.8	167.12	402.0	118.1	485.6	469.2	16.43	29.553	
2,900.0	2,708.1	2,839.4	2,797.7	18.1	10.2	167.26	420.2	122.7	513.2	496.1	17.11	29.994	
3,000.0	2,797.5	2,935.5	2,892.0	19.0	10.6	167.39	438.3	127.4	540.8	523.0	17.79	30.399	
3,100.0	2,886.8	3,031.6	2,986.3	19.9	11.0	167.50	456.5	132.0	568.4	549.9	18.47	30.773	
3,200.0	2,976.2	3,127.7	3,080.5	20.7	11.4	167.60	474.7	136.6	596.0	576.8	19.15	31.120	
3,300.0	3,065.5	3,223.9	3,174.8	21.6	11.8	167.69	492.9	141.3	623.5	603.7	19.83	31.442	
3,400.0	3,154.9	3,320.0	3,269.1	22.5	12.2	167.78	511.1	145.9	651.1	630.6	20.51	31.741	
3,500.0	3,244.2	3,416.1	3,363.3	23.3	12.6	167.86	529.3	150.5	678.7	657.5	21.20	32.021	
3,600.0	3,333.6	3,512.2	3,457.6	24.2	13.0	167.93	547.5	155.2	706.3	684.4	21.88	32.282	
3,700.0	3,422.9	3,608.3	3,551.9	25.1	13.5	168.00	565.7	159.8	733.9	711.3	22.56	32.527	
3,800.0	3,512.3	3,704.4	3,646.1	25.9	13.9	168.06	583.8	164.4	761.5	738.3	23.25	32.757	
3,900.0	3,601.6	3,800.5	3,740.4	26.8	14.3	168.11	602.0	169.1	789.1	765.2	23.93	32.974	
4,000.0	3,691.0	3,896.7	3,834.6	27.7	14.7	168.17	620.2	173.7	816.7	792.1	24.62	33.177	
4,100.0	3,780.4	3,992.8	3,928.9	28.5	15.1	168.22	638.4	178.3	844.3	819.0	25.30	33.370	
4,200.0	3,869.7	4,088.9	4,023.2	29.4	15.5	168.26	656.6	183.0	871.9	845.9	25.99	33.552	
4,300.0	3,959.1	4,185.0	4,117.4	30.3	15.9	168.31	674.8	187.6	899.5	872.8	26.67	33.724	
4,400.0	4,048.4	4,281.1	4,211.7	31.2	16.3	168.35	693.0	192.2	927.1	899.7	27.36	33.887	
4,500.0	4,137.8	4,377.2	4,306.0	32.0	16.7	168.39	711.2	196.9	954.7	926.6	28.04	34.042	
4,600.0	4,227.1	4,473.4	4,400.2	32.9	17.1	168.43	729.4	201.5	982.3	953.5	28.73	34.189	
4,700.0	4,316.5	4,556.2	4,481.5	33.8	17.4	168.46	744.7	205.4	1,010.2	980.9	29.36	34.405	
4,800.0	4,405.8	4,628.3	4,552.6	34.6	17.7	168.54	756.5	208.4	1,040.2	1,010.2	29.93	34.753	
4,900.0	4,495.2	4,700.0	4,623.6	35.5	17.9	168.65	766.5	211.0	1,072.3	1,041.8	30.47	35.195	
5,000.0	4,584.5	4,769.1	4,692.2	36.4	18.0	168.80	774.5	213.0	1,106.5	1,075.5	30.98	35.721	

Company:	Synergy Resources	Local Co-ordinate Reference:	Well SRC GCC 41-10D
Project:	SEC.10-T5N-R66W	TVD Reference:	WELL @ 4871.0ft (Original Well Elev)
Reference Site:	SRC Aims/GCC Pad Sec.10-T5N-R66W	MD Reference:	WELL @ 4871.0ft (Original Well Elev)
Site Error:	0.0ft	North Reference:	True
Reference Well:	SRC GCC 41-10D	Survey Calculation Method:	Minimum Curvature
Well Error:	0.0ft	Output errors are at	2.00 sigma
Reference Wellbore	Wellbore #1	Database:	Landmark
Reference Design:	Plan #2 (9-21-11)	Offset TVD Reference:	Offset Datum

Offset Design												Offset Site Error:	0.0 ft
Survey Program: 0-MWD												Offset Well Error:	0.0 ft
Reference		Offset		Semi Major Axis			Distance						
Measured Depth (ft)	Vertical Depth (ft)	Measured Depth (ft)	Vertical Depth (ft)	Reference (ft)	Offset (ft)	Highside Toolface (°)	Offset Wellbore Centre +N/-S (ft)	+E/-W (ft)	Between Centres (ft)	Between Ellipses (ft)	Minimum Separation (ft)	Separation Factor	Warning
5,100.0	4,673.9	4,837.8	4,760.5	37.2	18.2	168.97	780.9	214.6	1,142.7	1,111.3	31.47	36.316	
5,200.0	4,763.2	4,900.0	4,822.6	38.1	18.3	169.15	785.3	215.8	1,181.0	1,149.1	31.94	36.980	
5,256.3	4,813.6	4,942.6	4,865.1	38.6	18.4	169.29	787.5	216.3	1,203.5	1,171.3	32.20	37.378	
5,300.0	4,852.7	4,971.4	4,893.9	38.9	18.4	169.46	788.7	216.6	1,221.0	1,188.6	32.42	37.657	
5,400.0	4,943.5	5,037.2	4,959.7	39.5	18.5	169.83	790.3	217.0	1,260.2	1,227.4	32.89	38.322	
5,500.0	5,035.6	5,113.2	5,035.6	40.1	18.6	170.21	790.6	217.1	1,298.1	1,264.8	33.31	38.968	
5,600.0	5,129.1	5,206.7	5,129.1	40.7	18.7	170.59	790.6	217.1	1,333.2	1,299.5	33.73	39.523	
5,700.0	5,223.8	5,301.3	5,223.8	41.2	18.9	170.92	790.6	217.1	1,365.1	1,331.0	34.12	40.004	
5,800.0	5,319.5	5,397.0	5,319.5	41.7	19.0	171.20	790.6	217.1	1,393.7	1,359.2	34.48	40.420	
5,900.0	5,416.2	5,493.7	5,416.2	42.1	19.1	171.43	790.6	217.1	1,419.0	1,384.2	34.80	40.775	
6,000.0	5,513.7	5,591.2	5,513.7	42.4	19.2	171.63	790.6	217.1	1,440.9	1,405.8	35.08	41.074	
6,100.0	5,611.9	5,689.4	5,611.9	42.8	19.4	171.79	790.6	217.1	1,459.5	1,424.2	35.32	41.321	
6,200.0	5,710.7	5,788.2	5,710.7	43.1	19.5	171.92	790.6	217.1	1,474.6	1,439.1	35.52	41.520	
6,300.0	5,810.0	5,887.5	5,810.0	43.3	19.6	172.02	790.6	217.1	1,486.4	1,450.7	35.67	41.672	
6,400.0	5,909.6	5,987.2	5,909.6	43.5	19.8	172.08	790.6	217.1	1,494.7	1,458.9	35.78	41.779	
6,500.0	6,009.5	6,087.0	6,009.5	43.6	19.9	172.12	790.6	217.1	1,499.6	1,463.7	35.84	41.841	
6,590.5	6,100.0	6,177.5	6,100.0	43.7	20.1	171.78	790.6	217.1	1,501.0	1,465.1	35.86	41.861	
6,600.0	6,109.5	6,187.0	6,109.5	43.7	20.1	171.78	790.6	217.1	1,501.0	1,465.1	35.89	41.826	
6,700.0	6,209.5	6,287.0	6,209.5	43.7	20.2	171.78	790.6	217.1	1,501.0	1,464.8	36.21	41.453	
6,800.0	6,309.5	6,387.0	6,309.5	43.8	20.4	171.78	790.6	217.1	1,501.0	1,464.4	36.53	41.085	
6,900.0	6,409.5	6,487.0	6,409.5	43.9	20.5	171.78	790.6	217.1	1,501.0	1,464.1	36.86	40.720	
7,000.0	6,509.5	6,587.0	6,509.5	43.9	20.6	171.78	790.6	217.1	1,501.0	1,463.8	37.19	40.359	
7,100.0	6,609.5	6,687.0	6,609.5	44.0	20.8	171.78	790.6	217.1	1,501.0	1,463.4	37.52	40.001	
7,200.0	6,709.5	6,787.0	6,709.5	44.1	21.0	171.78	790.6	217.1	1,501.0	1,463.1	37.86	39.648	
7,300.0	6,809.5	6,887.0	6,809.5	44.1	21.1	171.78	790.6	217.1	1,501.0	1,462.8	38.19	39.299	
7,400.0	6,909.5	6,987.0	6,909.5	44.2	21.3	171.78	790.6	217.1	1,501.0	1,462.4	38.53	38.953	
7,500.0	7,009.5	7,087.0	7,009.5	44.3	21.4	171.78	790.6	217.1	1,501.0	1,462.1	38.87	38.612	
7,600.0	7,109.5	7,187.0	7,109.5	44.3	21.6	171.78	790.6	217.1	1,501.0	1,461.8	39.22	38.274	
7,700.0	7,209.5	7,287.0	7,209.5	44.4	21.7	171.78	790.6	217.1	1,501.0	1,461.4	39.56	37.941	
7,800.0	7,309.5	7,387.0	7,309.5	44.5	21.9	171.78	790.6	217.1	1,501.0	1,461.1	39.91	37.611	
7,900.0	7,409.5	7,487.0	7,409.5	44.5	22.0	171.78	790.6	217.1	1,501.0	1,460.7	40.26	37.285	
8,000.0	7,509.5	7,587.0	7,509.5	44.6	22.2	171.78	790.6	217.1	1,501.0	1,460.4	40.61	36.963	
8,100.0	7,609.5	7,687.0	7,609.5	44.7	22.4	171.78	790.6	217.1	1,501.0	1,460.0	40.96	36.646	
8,200.0	7,709.5	7,787.0	7,709.5	44.8	22.5	171.78	790.6	217.1	1,501.0	1,459.7	41.31	36.332	
8,300.0	7,809.5	7,887.0	7,809.5	44.8	22.7	171.78	790.6	217.1	1,501.0	1,459.3	41.67	36.021	
8,400.0	7,909.5	7,987.0	7,909.5	44.9	22.9	171.78	790.6	217.1	1,501.0	1,458.9	42.03	35.715	
8,455.5	7,965.0	8,042.5	7,965.0	45.0	22.9	171.78	790.6	217.1	1,501.0	1,458.7	42.23	35.547	

Company:	Synergy Resources	Local Co-ordinate Reference:	Well SRC GCC 41-10D
Project:	SEC.10-T5N-R66W	TVD Reference:	WELL @ 4871.0ft (Original Well Elev)
Reference Site:	SRC Aims/GCC Pad Sec.10-T5N-R66W	MD Reference:	WELL @ 4871.0ft (Original Well Elev)
Site Error:	0.0ft	North Reference:	True
Reference Well:	SRC GCC 41-10D	Survey Calculation Method:	Minimum Curvature
Well Error:	0.0ft	Output errors are at	2.00 sigma
Reference Wellbore	Wellbore #1	Database:	Landmark
Reference Design:	Plan #2 (9-21-11)	Offset TVD Reference:	Offset Datum

Reference Depths are relative to WELL @ 4871.0ft (Original Well Elev) Coordinates are relative to: SRC GCC 41-10D
 Offset Depths are relative to Offset Datum Coordinate System is US State Plane 1983, Wyoming Western Zone
 Central Meridian is -110.083333 ° Grid Convergence at Surface is: 3.46°



Company:	Synergy Resources	Local Co-ordinate Reference:	Well SRC GCC 41-10D
Project:	SEC.10-T5N-R66W	TVD Reference:	WELL @ 4871.0ft (Original Well Elev)
Reference Site:	SRC Aims/GCC Pad Sec.10-T5N-R66W	MD Reference:	WELL @ 4871.0ft (Original Well Elev)
Site Error:	0.0ft	North Reference:	True
Reference Well:	SRC GCC 41-10D	Survey Calculation Method:	Minimum Curvature
Well Error:	0.0ft	Output errors are at	2.00 sigma
Reference Wellbore	Wellbore #1	Database:	Landmark
Reference Design:	Plan #2 (9-21-11)	Offset TVD Reference:	Offset Datum

Reference Depths are relative to WELL @ 4871.0ft (Original Well Elev) Coordinates are relative to: SRC GCC 41-10D
Offset Depths are relative to Offset Datum Coordinate System is US State Plane 1983, Wyoming Western Zone
Central Meridian is -110.083333 ° Grid Convergence at Surface is: 3.46°

