

ENSIGN

Directional

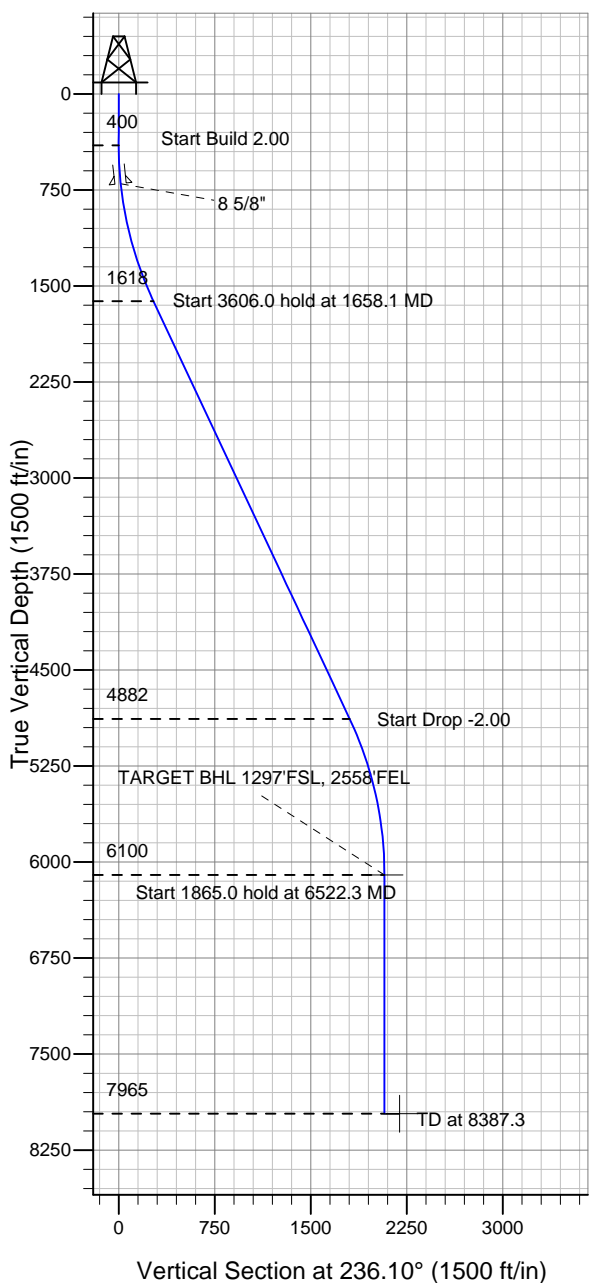
Well Name: SRC Aims 10PD

Surface Location: SRC Aims/GCC Pad Sec.10-T5N-R66W
 North American Datum 1983 US State Plane 1983 Wyoming Western Zone

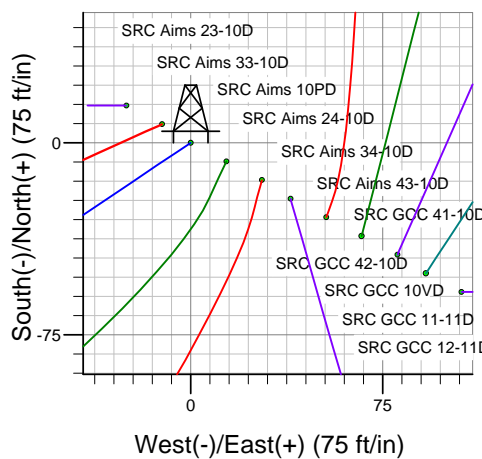
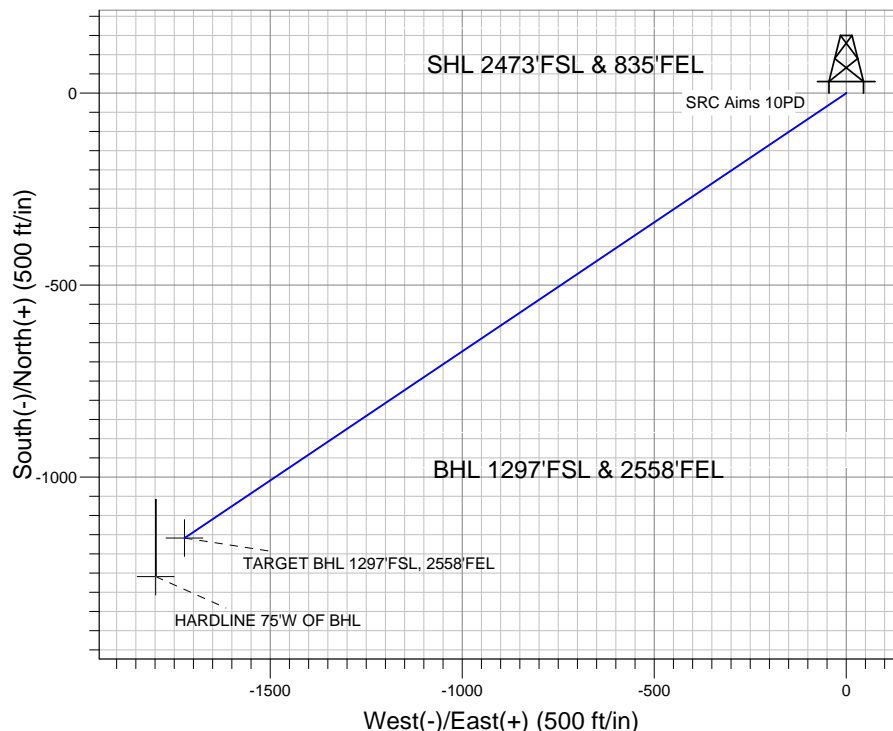
Ground Elevation: 4859.0

+N/-S	+E/-W	Northing	Easting	Latitude	Longitude	Slot
0.0	0.0	341371.03	4107476.68	40.413680	-104.759289	

Original Well Elev WELL @ 4872.0ft (Original Well Elev)



Synergy Resources



SRC Aims/GCC Pad Sec.10-T5N-R66W
 SRC Aims 10PD
 Plan #2 (9-21-11)
 12:31, October 05 2011



Azimuths to True North
 Magnetic North: 8.82°

Magnetic Field
 Strength: 53106.6snT
 Dip Angle: 67.05°
 Date: 10/5/2011
 Model: IGRF2010

WELLBORE TARGET DETAILS (LAT/LONG)

Name	TVD	+N/-S	+E/-W	Latitude	Longitude	Shape
TARGET BHL 1297'FSL, 2558'FEL	6100.0	-1158.5	-1723.9	40.410500	-104.765480	Point
HARDLINE 75'W OF BHL	7965.0	-1258.5	-1798.8	40.410225	-104.765749	Polygon

SECTION DETAILS

Sec	MD	Inc	Azi	TVD	+N/-S	+E/-W	DLeg	TFace	VSec	Target
1	0.0	0.00	0.00	0.0	0.0	0.0	0.00	0.00	0.0	
2	400.0	0.00	0.00	400.0	0.0	0.0	0.00	0.00	0.0	
3	1658.1	25.16	236.10	1618.1	-151.6	-225.6	2.00	236.10	271.9	
4	5264.2	25.16	236.10	4881.9	-1006.8	-1498.2	0.00	0.00	1805.1	
5	6522.3	0.00	0.00	6100.0	-1158.5	-1723.9	2.00	180.00	2077.0	TARGET BHL 1297'FSL, 2558'FEL
6	8387.3	0.00	0.00	7965.0	-1158.5	-1723.9	0.00	0.00	2077.0	



Directional

Synergy Resources

SEC.10-T5N-R66W

SRC Aims/GCC Pad Sec.10-T5N-R66W

SRC Aims 10PD

Wellbore #1

Plan: Plan #2 (9-21-11)

Standard Planning Report

05 October, 2011

Plan Sections										
Measured Depth (ft)	Inclination (°)	Azimuth (°)	Vertical Depth (ft)	+N/-S (ft)	+E/-W (ft)	Dogleg Rate (°/100ft)	Build Rate (°/100ft)	Turn Rate (°/100ft)	TFO (°)	Target
0.0	0.00	0.00	0.0	0.0	0.0	0.00	0.00	0.00	0.00	
400.0	0.00	0.00	400.0	0.0	0.0	0.00	0.00	0.00	0.00	
1,658.1	25.16	236.10	1,618.1	-151.6	-225.6	2.00	2.00	0.00	236.10	
5,264.2	25.16	236.10	4,881.9	-1,006.8	-1,498.2	0.00	0.00	0.00	0.00	
6,522.3	0.00	0.00	6,100.0	-1,158.5	-1,723.9	2.00	-2.00	0.00	180.00	TARGET BHL 1297
8,387.3	0.00	0.00	7,965.0	-1,158.5	-1,723.9	0.00	0.00	0.00	0.00	

Database:	Landmark	Local Co-ordinate Reference:	Well SRC Aims 10PD
Company:	Synergy Resources	TVD Reference:	WELL @ 4872.0ft (Original Well Elev)
Project:	SEC.10-T5N-R66W	MD Reference:	WELL @ 4872.0ft (Original Well Elev)
Site:	SRC Aims/GCC Pad Sec.10-T5N-R66W	North Reference:	True
Well:	SRC Aims 10PD	Survey Calculation Method:	Minimum Curvature
Wellbore:	Wellbore #1		
Design:	Plan #2 (9-21-11)		

Planned Survey									
Measured Depth (ft)	Inclination (°)	Azimuth (°)	Vertical Depth (ft)	+N/-S (ft)	+E/-W (ft)	Vertical Section (ft)	Dogleg Rate (°/100ft)	Build Rate (°/100ft)	Turn Rate (°/100ft)
0.0	0.00	0.00	0.0	0.0	0.0	0.0	0.00	0.00	0.00
40.0	0.00	0.00	40.0	0.0	0.0	0.0	0.00	0.00	0.00
80.0	0.00	0.00	80.0	0.0	0.0	0.0	0.00	0.00	0.00
120.0	0.00	0.00	120.0	0.0	0.0	0.0	0.00	0.00	0.00
160.0	0.00	0.00	160.0	0.0	0.0	0.0	0.00	0.00	0.00
200.0	0.00	0.00	200.0	0.0	0.0	0.0	0.00	0.00	0.00
240.0	0.00	0.00	240.0	0.0	0.0	0.0	0.00	0.00	0.00
280.0	0.00	0.00	280.0	0.0	0.0	0.0	0.00	0.00	0.00
320.0	0.00	0.00	320.0	0.0	0.0	0.0	0.00	0.00	0.00
360.0	0.00	0.00	360.0	0.0	0.0	0.0	0.00	0.00	0.00
400.0	0.00	0.00	400.0	0.0	0.0	0.0	0.00	0.00	0.00
440.0	0.80	236.10	440.0	-0.2	-0.2	0.3	2.00	2.00	0.00
480.0	1.60	236.10	480.0	-0.6	-0.9	1.1	2.00	2.00	0.00
520.0	2.40	236.10	520.0	-1.4	-2.1	2.5	2.00	2.00	0.00
560.0	3.20	236.10	559.9	-2.5	-3.7	4.5	2.00	2.00	0.00
600.0	4.00	236.10	599.8	-3.9	-5.8	7.0	2.00	2.00	0.00
640.0	4.80	236.10	639.7	-5.6	-8.3	10.0	2.00	2.00	0.00
680.0	5.60	236.10	679.6	-7.6	-11.3	13.7	2.00	2.00	0.00
700.6	6.01	236.10	700.0	-8.8	-13.1	15.8	2.00	2.00	0.00
8 5/8"									
720.0	6.40	236.10	719.3	-10.0	-14.8	17.9	2.00	2.00	0.00
760.0	7.20	236.10	759.1	-12.6	-18.7	22.6	2.00	2.00	0.00
800.0	8.00	236.10	798.7	-15.6	-23.1	27.9	2.00	2.00	0.00
840.0	8.80	236.10	838.3	-18.8	-28.0	33.7	2.00	2.00	0.00
880.0	9.60	236.10	877.8	-22.4	-33.3	40.1	2.00	2.00	0.00
920.0	10.40	236.10	917.1	-26.3	-39.1	47.1	2.00	2.00	0.00
960.0	11.20	236.10	956.4	-30.4	-45.3	54.6	2.00	2.00	0.00
1,000.0	12.00	236.10	995.6	-34.9	-52.0	62.6	2.00	2.00	0.00
1,040.0	12.80	236.10	1,034.7	-39.7	-59.1	71.2	2.00	2.00	0.00
1,080.0	13.60	236.10	1,073.6	-44.8	-66.7	80.3	2.00	2.00	0.00
1,120.0	14.40	236.10	1,112.4	-50.2	-74.7	90.0	2.00	2.00	0.00
1,160.0	15.20	236.10	1,151.1	-55.9	-83.2	100.2	2.00	2.00	0.00
1,200.0	16.00	236.10	1,189.6	-61.9	-92.1	111.0	2.00	2.00	0.00
1,240.0	16.80	236.10	1,228.0	-68.2	-101.5	122.3	2.00	2.00	0.00
1,280.0	17.60	236.10	1,266.2	-74.8	-111.3	134.1	2.00	2.00	0.00
1,320.0	18.40	236.10	1,304.3	-81.7	-121.6	146.5	2.00	2.00	0.00
1,360.0	19.20	236.10	1,342.1	-88.9	-132.3	159.3	2.00	2.00	0.00
1,400.0	20.00	236.10	1,379.8	-96.4	-143.4	172.8	2.00	2.00	0.00
1,440.0	20.80	236.10	1,417.3	-104.1	-155.0	186.7	2.00	2.00	0.00
1,480.0	21.60	236.10	1,454.6	-112.2	-167.0	201.2	2.00	2.00	0.00
1,520.0	22.40	236.10	1,491.7	-120.6	-179.4	216.2	2.00	2.00	0.00
1,560.0	23.20	236.10	1,528.6	-129.2	-192.3	231.7	2.00	2.00	0.00
1,600.0	24.00	236.10	1,565.2	-138.1	-205.6	247.7	2.00	2.00	0.00
1,640.0	24.80	236.10	1,601.6	-147.4	-219.3	264.2	2.00	2.00	0.00
1,658.1	25.16	236.10	1,618.1	-151.6	-225.6	271.9	2.00	2.00	0.00
1,680.0	25.16	236.10	1,637.9	-156.8	-233.4	281.2	0.00	0.00	0.00
1,720.0	25.16	236.10	1,674.1	-166.3	-247.5	298.2	0.00	0.00	0.00
1,760.0	25.16	236.10	1,710.3	-175.8	-261.6	315.2	0.00	0.00	0.00
1,800.0	25.16	236.10	1,746.5	-185.3	-275.7	332.2	0.00	0.00	0.00
1,840.0	25.16	236.10	1,782.7	-194.8	-289.8	349.2	0.00	0.00	0.00
1,880.0	25.16	236.10	1,818.9	-204.3	-303.9	366.2	0.00	0.00	0.00
1,920.0	25.16	236.10	1,855.1	-213.7	-318.1	383.2	0.00	0.00	0.00
1,960.0	25.16	236.10	1,891.3	-223.2	-332.2	400.2	0.00	0.00	0.00
2,000.0	25.16	236.10	1,927.5	-232.7	-346.3	417.2	0.00	0.00	0.00

Database:	Landmark	Local Co-ordinate Reference:	Well SRC Aims 10PD
Company:	Synergy Resources	TVD Reference:	WELL @ 4872.0ft (Original Well Elev)
Project:	SEC.10-T5N-R66W	MD Reference:	WELL @ 4872.0ft (Original Well Elev)
Site:	SRC Aims/GCC Pad Sec.10-T5N-R66W	North Reference:	True
Well:	SRC Aims 10PD	Survey Calculation Method:	Minimum Curvature
Wellbore:	Wellbore #1		
Design:	Plan #2 (9-21-11)		

Planned Survey									
Measured Depth (ft)	Inclination (°)	Azimuth (°)	Vertical Depth (ft)	+N/-S (ft)	+E/-W (ft)	Vertical Section (ft)	Dogleg Rate (°/100ft)	Build Rate (°/100ft)	Turn Rate (°/100ft)
2,040.0	25.16	236.10	1,963.7	-242.2	-360.4	434.2	0.00	0.00	0.00
2,080.0	25.16	236.10	1,999.9	-251.7	-374.5	451.2	0.00	0.00	0.00
2,120.0	25.16	236.10	2,036.1	-261.2	-388.6	468.2	0.00	0.00	0.00
2,160.0	25.16	236.10	2,072.3	-270.7	-402.8	485.2	0.00	0.00	0.00
2,200.0	25.16	236.10	2,108.5	-280.1	-416.9	502.3	0.00	0.00	0.00
2,240.0	25.16	236.10	2,144.7	-289.6	-431.0	519.3	0.00	0.00	0.00
2,280.0	25.16	236.10	2,180.9	-299.1	-445.1	536.3	0.00	0.00	0.00
2,320.0	25.16	236.10	2,217.1	-308.6	-459.2	553.3	0.00	0.00	0.00
2,360.0	25.16	236.10	2,253.3	-318.1	-473.3	570.3	0.00	0.00	0.00
2,400.0	25.16	236.10	2,289.5	-327.6	-487.4	587.3	0.00	0.00	0.00
2,440.0	25.16	236.10	2,325.7	-337.1	-501.6	604.3	0.00	0.00	0.00
2,480.0	25.16	236.10	2,362.0	-346.5	-515.7	621.3	0.00	0.00	0.00
2,520.0	25.16	236.10	2,398.2	-356.0	-529.8	638.3	0.00	0.00	0.00
2,560.0	25.16	236.10	2,434.4	-365.5	-543.9	655.3	0.00	0.00	0.00
2,600.0	25.16	236.10	2,470.6	-375.0	-558.0	672.3	0.00	0.00	0.00
2,640.0	25.16	236.10	2,506.8	-384.5	-572.1	689.3	0.00	0.00	0.00
2,680.0	25.16	236.10	2,543.0	-394.0	-586.3	706.3	0.00	0.00	0.00
2,720.0	25.16	236.10	2,579.2	-403.5	-600.4	723.4	0.00	0.00	0.00
2,760.0	25.16	236.10	2,615.4	-413.0	-614.5	740.4	0.00	0.00	0.00
2,800.0	25.16	236.10	2,651.6	-422.4	-628.6	757.4	0.00	0.00	0.00
2,840.0	25.16	236.10	2,687.8	-431.9	-642.7	774.4	0.00	0.00	0.00
2,880.0	25.16	236.10	2,724.0	-441.4	-656.8	791.4	0.00	0.00	0.00
2,920.0	25.16	236.10	2,760.2	-450.9	-671.0	808.4	0.00	0.00	0.00
2,960.0	25.16	236.10	2,796.4	-460.4	-685.1	825.4	0.00	0.00	0.00
3,000.0	25.16	236.10	2,832.6	-469.9	-699.2	842.4	0.00	0.00	0.00
3,040.0	25.16	236.10	2,868.8	-479.4	-713.3	859.4	0.00	0.00	0.00
3,080.0	25.16	236.10	2,905.0	-488.8	-727.4	876.4	0.00	0.00	0.00
3,120.0	25.16	236.10	2,941.2	-498.3	-741.5	893.4	0.00	0.00	0.00
3,160.0	25.16	236.10	2,977.4	-507.8	-755.7	910.4	0.00	0.00	0.00
3,200.0	25.16	236.10	3,013.6	-517.3	-769.8	927.4	0.00	0.00	0.00
3,240.0	25.16	236.10	3,049.8	-526.8	-783.9	944.5	0.00	0.00	0.00
3,280.0	25.16	236.10	3,086.0	-536.3	-798.0	961.5	0.00	0.00	0.00
3,320.0	25.16	236.10	3,122.2	-545.8	-812.1	978.5	0.00	0.00	0.00
3,360.0	25.16	236.10	3,158.4	-555.3	-826.2	995.5	0.00	0.00	0.00
3,400.0	25.16	236.10	3,194.6	-564.7	-840.4	1,012.5	0.00	0.00	0.00
3,440.0	25.16	236.10	3,230.9	-574.2	-854.5	1,029.5	0.00	0.00	0.00
3,480.0	25.16	236.10	3,267.1	-583.7	-868.6	1,046.5	0.00	0.00	0.00
3,520.0	25.16	236.10	3,303.3	-593.2	-882.7	1,063.5	0.00	0.00	0.00
3,560.0	25.16	236.10	3,339.5	-602.7	-896.8	1,080.5	0.00	0.00	0.00
3,600.0	25.16	236.10	3,375.7	-612.2	-910.9	1,097.5	0.00	0.00	0.00
3,640.0	25.16	236.10	3,411.9	-621.7	-925.1	1,114.5	0.00	0.00	0.00
3,680.0	25.16	236.10	3,448.1	-631.1	-939.2	1,131.5	0.00	0.00	0.00
3,720.0	25.16	236.10	3,484.3	-640.6	-953.3	1,148.5	0.00	0.00	0.00
3,760.0	25.16	236.10	3,520.5	-650.1	-967.4	1,165.6	0.00	0.00	0.00
3,800.0	25.16	236.10	3,556.7	-659.6	-981.5	1,182.6	0.00	0.00	0.00
3,840.0	25.16	236.10	3,592.9	-669.1	-995.6	1,199.6	0.00	0.00	0.00
3,880.0	25.16	236.10	3,629.1	-678.6	-1,009.8	1,216.6	0.00	0.00	0.00
3,920.0	25.16	236.10	3,665.3	-688.1	-1,023.9	1,233.6	0.00	0.00	0.00
3,960.0	25.16	236.10	3,701.5	-697.5	-1,038.0	1,250.6	0.00	0.00	0.00
4,000.0	25.16	236.10	3,737.7	-707.0	-1,052.1	1,267.6	0.00	0.00	0.00
4,040.0	25.16	236.10	3,773.9	-716.5	-1,066.2	1,284.6	0.00	0.00	0.00
4,080.0	25.16	236.10	3,810.1	-726.0	-1,080.3	1,301.6	0.00	0.00	0.00
4,120.0	25.16	236.10	3,846.3	-735.5	-1,094.4	1,318.6	0.00	0.00	0.00
4,160.0	25.16	236.10	3,882.5	-745.0	-1,108.6	1,335.6	0.00	0.00	0.00

Database:	Landmark	Local Co-ordinate Reference:	Well SRC Aims 10PD
Company:	Synergy Resources	TVD Reference:	WELL @ 4872.0ft (Original Well Elev)
Project:	SEC.10-T5N-R66W	MD Reference:	WELL @ 4872.0ft (Original Well Elev)
Site:	SRC Aims/GCC Pad Sec.10-T5N-R66W	North Reference:	True
Well:	SRC Aims 10PD	Survey Calculation Method:	Minimum Curvature
Wellbore:	Wellbore #1		
Design:	Plan #2 (9-21-11)		

Planned Survey										
Measured Depth (ft)	Inclination (°)	Azimuth (°)	Vertical Depth (ft)	+N/-S (ft)	+E/-W (ft)	Vertical Section (ft)	Dogleg Rate (°/100ft)	Build Rate (°/100ft)	Turn Rate (°/100ft)	
4,200.0	25.16	236.10	3,918.7	-754.5	-1,122.7	1,352.6	0.00	0.00	0.00	
4,240.0	25.16	236.10	3,954.9	-764.0	-1,136.8	1,369.6	0.00	0.00	0.00	
4,280.0	25.16	236.10	3,991.1	-773.4	-1,150.9	1,386.7	0.00	0.00	0.00	
4,320.0	25.16	236.10	4,027.3	-782.9	-1,165.0	1,403.7	0.00	0.00	0.00	
4,360.0	25.16	236.10	4,063.5	-792.4	-1,179.1	1,420.7	0.00	0.00	0.00	
4,400.0	25.16	236.10	4,099.7	-801.9	-1,193.3	1,437.7	0.00	0.00	0.00	
4,440.0	25.16	236.10	4,136.0	-811.4	-1,207.4	1,454.7	0.00	0.00	0.00	
4,480.0	25.16	236.10	4,172.2	-820.9	-1,221.5	1,471.7	0.00	0.00	0.00	
4,520.0	25.16	236.10	4,208.4	-830.4	-1,235.6	1,488.7	0.00	0.00	0.00	
4,560.0	25.16	236.10	4,244.6	-839.8	-1,249.7	1,505.7	0.00	0.00	0.00	
4,600.0	25.16	236.10	4,280.8	-849.3	-1,263.8	1,522.7	0.00	0.00	0.00	
4,640.0	25.16	236.10	4,317.0	-858.8	-1,278.0	1,539.7	0.00	0.00	0.00	
4,680.0	25.16	236.10	4,353.2	-868.3	-1,292.1	1,556.7	0.00	0.00	0.00	
4,720.0	25.16	236.10	4,389.4	-877.8	-1,306.2	1,573.7	0.00	0.00	0.00	
4,760.0	25.16	236.10	4,425.6	-887.3	-1,320.3	1,590.7	0.00	0.00	0.00	
4,800.0	25.16	236.10	4,461.8	-896.8	-1,334.4	1,607.8	0.00	0.00	0.00	
4,840.0	25.16	236.10	4,498.0	-906.3	-1,348.5	1,624.8	0.00	0.00	0.00	
4,880.0	25.16	236.10	4,534.2	-915.7	-1,362.7	1,641.8	0.00	0.00	0.00	
4,920.0	25.16	236.10	4,570.4	-925.2	-1,376.8	1,658.8	0.00	0.00	0.00	
4,960.0	25.16	236.10	4,606.6	-934.7	-1,390.9	1,675.8	0.00	0.00	0.00	
5,000.0	25.16	236.10	4,642.8	-944.2	-1,405.0	1,692.8	0.00	0.00	0.00	
5,040.0	25.16	236.10	4,679.0	-953.7	-1,419.1	1,709.8	0.00	0.00	0.00	
5,080.0	25.16	236.10	4,715.2	-963.2	-1,433.2	1,726.8	0.00	0.00	0.00	
5,120.0	25.16	236.10	4,751.4	-972.7	-1,447.4	1,743.8	0.00	0.00	0.00	
5,160.0	25.16	236.10	4,787.6	-982.1	-1,461.5	1,760.8	0.00	0.00	0.00	
5,200.0	25.16	236.10	4,823.8	-991.6	-1,475.6	1,777.8	0.00	0.00	0.00	
5,240.0	25.16	236.10	4,860.0	-1,001.1	-1,489.7	1,794.8	0.00	0.00	0.00	
5,264.2	25.16	236.10	4,881.9	-1,006.8	-1,498.2	1,805.1	0.00	0.00	0.00	
5,280.0	24.85	236.10	4,896.3	-1,010.6	-1,503.8	1,811.8	2.00	-2.00	0.00	
5,320.0	24.05	236.10	4,932.7	-1,019.8	-1,517.5	1,828.4	2.00	-2.00	0.00	
5,360.0	23.25	236.10	4,969.3	-1,028.8	-1,530.8	1,844.4	2.00	-2.00	0.00	
5,400.0	22.45	236.10	5,006.2	-1,037.4	-1,543.7	1,859.9	2.00	-2.00	0.00	
5,440.0	21.65	236.10	5,043.2	-1,045.8	-1,556.2	1,875.0	2.00	-2.00	0.00	
5,480.0	20.85	236.10	5,080.5	-1,053.9	-1,568.2	1,889.4	2.00	-2.00	0.00	
5,520.0	20.05	236.10	5,118.0	-1,061.7	-1,579.8	1,903.4	2.00	-2.00	0.00	
5,560.0	19.25	236.10	5,155.7	-1,069.2	-1,591.0	1,916.9	2.00	-2.00	0.00	
5,600.0	18.45	236.10	5,193.5	-1,076.4	-1,601.7	1,929.8	2.00	-2.00	0.00	
5,640.0	17.65	236.10	5,231.6	-1,083.3	-1,612.0	1,942.2	2.00	-2.00	0.00	
5,680.0	16.85	236.10	5,269.8	-1,089.9	-1,621.8	1,954.0	2.00	-2.00	0.00	
5,720.0	16.05	236.10	5,308.1	-1,096.2	-1,631.2	1,965.4	2.00	-2.00	0.00	
5,760.0	15.25	236.10	5,346.7	-1,102.2	-1,640.2	1,976.2	2.00	-2.00	0.00	
5,800.0	14.45	236.10	5,385.3	-1,108.0	-1,648.7	1,986.4	2.00	-2.00	0.00	
5,840.0	13.65	236.10	5,424.1	-1,113.4	-1,656.8	1,996.1	2.00	-2.00	0.00	
5,880.0	12.85	236.10	5,463.1	-1,118.5	-1,664.4	2,005.3	2.00	-2.00	0.00	
5,920.0	12.05	236.10	5,502.1	-1,123.3	-1,671.5	2,013.9	2.00	-2.00	0.00	
5,960.0	11.25	236.10	5,541.3	-1,127.8	-1,678.2	2,022.0	2.00	-2.00	0.00	
6,000.0	10.45	236.10	5,580.6	-1,132.0	-1,684.5	2,029.5	2.00	-2.00	0.00	
6,040.0	9.65	236.10	5,620.0	-1,135.9	-1,690.3	2,036.5	2.00	-2.00	0.00	
6,080.0	8.85	236.10	5,659.4	-1,139.5	-1,695.6	2,042.9	2.00	-2.00	0.00	
6,120.0	8.05	236.10	5,699.0	-1,142.8	-1,700.5	2,048.8	2.00	-2.00	0.00	
6,160.0	7.25	236.10	5,738.7	-1,145.7	-1,704.9	2,054.1	2.00	-2.00	0.00	
6,200.0	6.45	236.10	5,778.4	-1,148.4	-1,708.8	2,058.9	2.00	-2.00	0.00	
6,240.0	5.65	236.10	5,818.1	-1,150.7	-1,712.3	2,063.1	2.00	-2.00	0.00	
6,280.0	4.85	236.10	5,858.0	-1,152.8	-1,715.4	2,066.7	2.00	-2.00	0.00	

Database:	Landmark	Local Co-ordinate Reference:	Well SRC Aims 10PD
Company:	Synergy Resources	TVD Reference:	WELL @ 4872.0ft (Original Well Elev)
Project:	SEC.10-T5N-R66W	MD Reference:	WELL @ 4872.0ft (Original Well Elev)
Site:	SRC Aims/GCC Pad Sec.10-T5N-R66W	North Reference:	True
Well:	SRC Aims 10PD	Survey Calculation Method:	Minimum Curvature
Wellbore:	Wellbore #1		
Design:	Plan #2 (9-21-11)		

Planned Survey									
Measured Depth (ft)	Inclination (°)	Azimuth (°)	Vertical Depth (ft)	+N/-S (ft)	+E/-W (ft)	Vertical Section (ft)	Dogleg Rate (°/100ft)	Build Rate (°/100ft)	Turn Rate (°/100ft)
6,320.0	4.05	236.10	5,897.9	-1,154.5	-1,718.0	2,069.8	2.00	-2.00	0.00
6,360.0	3.25	236.10	5,937.8	-1,155.9	-1,720.1	2,072.4	2.00	-2.00	0.00
6,400.0	2.45	236.10	5,977.7	-1,157.0	-1,721.7	2,074.4	2.00	-2.00	0.00
6,440.0	1.65	236.10	6,017.7	-1,157.8	-1,722.9	2,075.8	2.00	-2.00	0.00
6,480.0	0.85	236.10	6,057.7	-1,158.3	-1,723.6	2,076.7	2.00	-2.00	0.00
6,520.0	0.05	236.10	6,097.7	-1,158.5	-1,723.9	2,077.0	2.00	-2.00	0.00
6,522.3	0.00	0.00	6,100.0	-1,158.5	-1,723.9	2,077.0	2.00	-2.00	5,354.32
TARGET BHL 1297'FSL, 2558'FEL									
6,560.0	0.00	0.00	6,137.7	-1,158.5	-1,723.9	2,077.0	0.00	0.00	0.00
6,600.0	0.00	0.00	6,177.7	-1,158.5	-1,723.9	2,077.0	0.00	0.00	0.00
6,640.0	0.00	0.00	6,217.7	-1,158.5	-1,723.9	2,077.0	0.00	0.00	0.00
6,680.0	0.00	0.00	6,257.7	-1,158.5	-1,723.9	2,077.0	0.00	0.00	0.00
6,720.0	0.00	0.00	6,297.7	-1,158.5	-1,723.9	2,077.0	0.00	0.00	0.00
6,760.0	0.00	0.00	6,337.7	-1,158.5	-1,723.9	2,077.0	0.00	0.00	0.00
6,800.0	0.00	0.00	6,377.7	-1,158.5	-1,723.9	2,077.0	0.00	0.00	0.00
6,840.0	0.00	0.00	6,417.7	-1,158.5	-1,723.9	2,077.0	0.00	0.00	0.00
6,880.0	0.00	0.00	6,457.7	-1,158.5	-1,723.9	2,077.0	0.00	0.00	0.00
6,920.0	0.00	0.00	6,497.7	-1,158.5	-1,723.9	2,077.0	0.00	0.00	0.00
6,960.0	0.00	0.00	6,537.7	-1,158.5	-1,723.9	2,077.0	0.00	0.00	0.00
7,000.0	0.00	0.00	6,577.7	-1,158.5	-1,723.9	2,077.0	0.00	0.00	0.00
7,040.0	0.00	0.00	6,617.7	-1,158.5	-1,723.9	2,077.0	0.00	0.00	0.00
7,080.0	0.00	0.00	6,657.7	-1,158.5	-1,723.9	2,077.0	0.00	0.00	0.00
7,120.0	0.00	0.00	6,697.7	-1,158.5	-1,723.9	2,077.0	0.00	0.00	0.00
7,160.0	0.00	0.00	6,737.7	-1,158.5	-1,723.9	2,077.0	0.00	0.00	0.00
7,200.0	0.00	0.00	6,777.7	-1,158.5	-1,723.9	2,077.0	0.00	0.00	0.00
7,240.0	0.00	0.00	6,817.7	-1,158.5	-1,723.9	2,077.0	0.00	0.00	0.00
7,280.0	0.00	0.00	6,857.7	-1,158.5	-1,723.9	2,077.0	0.00	0.00	0.00
7,320.0	0.00	0.00	6,897.7	-1,158.5	-1,723.9	2,077.0	0.00	0.00	0.00
7,360.0	0.00	0.00	6,937.7	-1,158.5	-1,723.9	2,077.0	0.00	0.00	0.00
7,400.0	0.00	0.00	6,977.7	-1,158.5	-1,723.9	2,077.0	0.00	0.00	0.00
7,440.0	0.00	0.00	7,017.7	-1,158.5	-1,723.9	2,077.0	0.00	0.00	0.00
7,480.0	0.00	0.00	7,057.7	-1,158.5	-1,723.9	2,077.0	0.00	0.00	0.00
7,520.0	0.00	0.00	7,097.7	-1,158.5	-1,723.9	2,077.0	0.00	0.00	0.00
7,560.0	0.00	0.00	7,137.7	-1,158.5	-1,723.9	2,077.0	0.00	0.00	0.00
7,600.0	0.00	0.00	7,177.7	-1,158.5	-1,723.9	2,077.0	0.00	0.00	0.00
7,640.0	0.00	0.00	7,217.7	-1,158.5	-1,723.9	2,077.0	0.00	0.00	0.00
7,680.0	0.00	0.00	7,257.7	-1,158.5	-1,723.9	2,077.0	0.00	0.00	0.00
7,720.0	0.00	0.00	7,297.7	-1,158.5	-1,723.9	2,077.0	0.00	0.00	0.00
7,760.0	0.00	0.00	7,337.7	-1,158.5	-1,723.9	2,077.0	0.00	0.00	0.00
7,800.0	0.00	0.00	7,377.7	-1,158.5	-1,723.9	2,077.0	0.00	0.00	0.00
7,840.0	0.00	0.00	7,417.7	-1,158.5	-1,723.9	2,077.0	0.00	0.00	0.00
7,880.0	0.00	0.00	7,457.7	-1,158.5	-1,723.9	2,077.0	0.00	0.00	0.00
7,920.0	0.00	0.00	7,497.7	-1,158.5	-1,723.9	2,077.0	0.00	0.00	0.00
7,960.0	0.00	0.00	7,537.7	-1,158.5	-1,723.9	2,077.0	0.00	0.00	0.00
8,000.0	0.00	0.00	7,577.7	-1,158.5	-1,723.9	2,077.0	0.00	0.00	0.00
8,040.0	0.00	0.00	7,617.7	-1,158.5	-1,723.9	2,077.0	0.00	0.00	0.00
8,080.0	0.00	0.00	7,657.7	-1,158.5	-1,723.9	2,077.0	0.00	0.00	0.00
8,120.0	0.00	0.00	7,697.7	-1,158.5	-1,723.9	2,077.0	0.00	0.00	0.00
8,160.0	0.00	0.00	7,737.7	-1,158.5	-1,723.9	2,077.0	0.00	0.00	0.00
8,200.0	0.00	0.00	7,777.7	-1,158.5	-1,723.9	2,077.0	0.00	0.00	0.00
8,240.0	0.00	0.00	7,817.7	-1,158.5	-1,723.9	2,077.0	0.00	0.00	0.00
8,280.0	0.00	0.00	7,857.7	-1,158.5	-1,723.9	2,077.0	0.00	0.00	0.00
8,320.0	0.00	0.00	7,897.7	-1,158.5	-1,723.9	2,077.0	0.00	0.00	0.00
8,360.0	0.00	0.00	7,937.7	-1,158.5	-1,723.9	2,077.0	0.00	0.00	0.00

Database:	Landmark	Local Co-ordinate Reference:	Well SRC Aims 10PD
Company:	Synergy Resources	TVD Reference:	WELL @ 4872.0ft (Original Well Elev)
Project:	SEC.10-T5N-R66W	MD Reference:	WELL @ 4872.0ft (Original Well Elev)
Site:	SRC Aims/GCC Pad Sec.10-T5N-R66W	North Reference:	True
Well:	SRC Aims 10PD	Survey Calculation Method:	Minimum Curvature
Wellbore:	Wellbore #1		
Design:	Plan #2 (9-21-11)		

Planned Survey									
Measured Depth (ft)	Inclination (°)	Azimuth (°)	Vertical Depth (ft)	+N/-S (ft)	+E/-W (ft)	Vertical Section (ft)	Dogleg Rate (°/100ft)	Build Rate (°/100ft)	Turn Rate (°/100ft)
8,387.3	0.00	0.00	7,965.0	-1,158.5	-1,723.9	2,077.0	0.00	0.00	0.00
HARDLINE 75'W OF BHL									

Targets									
Target Name - hit/miss target - Shape	Dip Angle (°)	Dip Dir. (°)	TVD (ft)	+N/-S (ft)	+E/-W (ft)	Northing (ft)	Easting (ft)	Latitude	Longitude
TARGET BHL 1297'F: - plan hits target center - Point	0.00	0.00	6,100.0	-1,158.5	-1,723.9	340,107.65	4,105,821.72	40.410500	-104.765480
HARDLINE 75'W OF I - plan misses target center by 125.0ft at 8387.3ft MD (7965.0 TVD, -1158.5 N, -1723.9 E) - Polygon	0.00	0.00	7,965.0	-1,258.5	-1,798.8	340,003.04	4,105,752.77	40.410225	-104.765749
Point 1			7,965.0	0.0	0.0	340,003.04	4,105,752.77		
Point 2			7,965.0	200.0	0.0	340,203.16	4,105,740.68		

Casing Points					
Measured Depth (ft)	Vertical Depth (ft)	Name	Casing Diameter (")	Hole Diameter (")	
700.6	700.0	8 5/8"	8-5/8	12-1/4	



Directional

Synergy Resources

SEC.10-T5N-R66W

SRC Aims/GCC Pad Sec.10-T5N-R66W

SRC Aims 10PD

Wellbore #1

Plan #2 (9-21-11)

Anticollision Report

05 October, 2011

Company:	Synergy Resources	Local Co-ordinate Reference:	Well SRC Aims 10PD
Project:	SEC.10-T5N-R66W	TVD Reference:	WELL @ 4872.0ft (Original Well Elev)
Reference Site:	SRC Aims/GCC Pad Sec.10-T5N-R66W	MD Reference:	WELL @ 4872.0ft (Original Well Elev)
Site Error:	0.0ft	North Reference:	True
Reference Well:	SRC Aims 10PD	Survey Calculation Method:	Minimum Curvature
Well Error:	0.0ft	Output errors are at	2.00 sigma
Reference Wellbore	Wellbore #1	Database:	Landmark
Reference Design:	Plan #2 (9-21-11)	Offset TVD Reference:	Offset Datum

Offset Design												Offset Site Error:	0.0ft
Survey Program: 0-MWD												Offset Well Error:	0.0ft
Reference		Offset		Semi Major Axis			Distance						Warning
Measured Depth (ft)	Vertical Depth (ft)	Measured Depth (ft)	Vertical Depth (ft)	Reference (ft)	Offset (ft)	Highside Toolface (°)	Offset Wellbore Centre +N/-S (ft)	+E/-W (ft)	Between Centres (ft)	Between Ellipses (ft)	Minimum Separation (ft)	Separation Factor	
2,000.0	1,927.5	1,983.0	1,887.3	9.4	10.9	-39.17	-327.7	-368.7	105.1	90.6	14.50	7.251	
2,100.0	2,018.0	2,082.9	1,975.4	10.2	11.8	-38.08	-355.0	-406.9	110.0	94.4	15.56	7.069	
2,200.0	2,108.5	2,182.7	2,063.5	11.1	12.8	-37.08	-382.4	-445.1	114.8	98.2	16.60	6.919	
2,300.0	2,199.0	2,282.6	2,151.6	12.0	13.8	-36.16	-409.8	-483.3	119.7	102.1	17.62	6.795	
2,400.0	2,289.5	2,382.5	2,239.8	12.9	14.8	-35.31	-437.2	-521.5	124.7	106.0	18.64	6.690	
2,500.0	2,380.1	2,482.3	2,327.9	13.8	15.8	-34.53	-464.5	-559.7	129.6	110.0	19.64	6.601	
2,600.0	2,470.6	2,582.2	2,416.0	14.7	16.8	-33.80	-491.9	-597.9	134.6	114.0	20.63	6.525	
2,700.0	2,561.1	2,682.0	2,504.1	15.6	17.7	-33.13	-519.3	-636.1	139.6	118.0	21.61	6.460	
2,800.0	2,651.6	2,781.9	2,592.2	16.5	18.7	-32.50	-546.6	-674.3	144.6	122.0	22.58	6.404	
2,900.0	2,742.1	2,881.8	2,680.3	17.3	19.7	-31.92	-574.0	-712.5	149.7	126.1	23.55	6.355	
3,000.0	2,832.6	2,981.6	2,768.4	18.2	20.7	-31.37	-601.4	-750.7	154.7	130.2	24.51	6.312	
3,100.0	2,923.1	3,081.5	2,856.6	19.1	21.7	-30.86	-628.7	-788.9	159.8	134.3	25.46	6.274	
3,200.0	3,013.6	3,181.4	2,944.7	20.0	22.7	-30.38	-656.1	-827.1	164.8	138.4	26.41	6.241	
3,300.0	3,104.1	3,281.2	3,032.8	20.9	23.7	-29.93	-683.5	-865.3	169.9	142.6	27.35	6.212	
3,400.0	3,194.6	3,381.1	3,120.9	21.8	24.7	-29.50	-710.9	-903.5	175.0	146.7	28.29	6.186	
3,500.0	3,285.2	3,480.9	3,209.0	22.7	25.7	-29.10	-738.2	-941.7	180.1	150.9	29.23	6.162	
3,600.0	3,375.7	3,580.8	3,297.1	23.6	26.7	-28.72	-765.6	-979.9	185.2	155.1	30.16	6.141	
3,700.0	3,466.2	3,680.7	3,385.2	24.5	27.6	-28.36	-793.0	-1,018.1	190.3	159.2	31.09	6.123	
3,800.0	3,556.7	3,780.5	3,473.4	25.4	28.6	-28.02	-820.3	-1,056.3	195.5	163.4	32.01	6.106	
3,900.0	3,647.2	3,880.4	3,561.5	26.3	29.6	-27.70	-847.7	-1,094.5	200.6	167.7	32.93	6.091	
4,000.0	3,737.7	3,980.3	3,649.6	27.2	30.6	-27.39	-875.1	-1,132.7	205.7	171.9	33.85	6.077	
4,100.0	3,828.2	4,080.1	3,737.7	28.1	31.6	-27.10	-902.4	-1,170.9	210.9	176.1	34.77	6.065	
4,200.0	3,918.7	4,180.0	3,825.8	29.0	32.6	-26.82	-929.8	-1,209.1	216.0	180.3	35.68	6.053	
4,300.0	4,009.2	4,279.8	3,913.9	29.9	33.6	-26.56	-957.2	-1,247.3	221.2	184.6	36.60	6.043	
4,400.0	4,099.7	4,379.7	4,002.0	30.8	34.6	-26.31	-984.6	-1,285.5	226.3	188.8	37.51	6.034	
4,500.0	4,190.3	4,479.6	4,090.1	31.7	35.6	-26.07	-1,011.9	-1,323.7	231.5	193.1	38.42	6.025	
4,600.0	4,280.8	4,579.4	4,178.3	32.6	36.6	-25.83	-1,039.3	-1,361.9	236.6	197.3	39.33	6.017	
4,700.0	4,371.3	4,679.3	4,266.4	33.5	37.6	-25.61	-1,066.7	-1,400.1	241.8	201.6	40.23	6.010	
4,800.0	4,461.8	4,779.2	4,354.5	34.4	38.6	-25.40	-1,094.0	-1,438.3	247.0	205.8	41.14	6.004	
4,900.0	4,552.3	4,879.0	4,442.6	35.3	39.6	-25.20	-1,121.4	-1,476.5	252.2	210.1	42.04	5.998	
5,000.0	4,642.8	4,978.9	4,530.7	36.2	40.6	-25.00	-1,148.8	-1,514.7	257.3	214.4	42.95	5.992	
5,100.0	4,733.3	5,078.7	4,618.8	37.1	41.6	-24.82	-1,176.1	-1,552.9	262.5	218.7	43.85	5.987	
5,200.0	4,823.8	5,178.6	4,706.9	38.0	42.6	-24.64	-1,203.5	-1,591.1	267.7	223.0	44.75	5.982	
5,264.2	4,881.9	5,242.7	4,763.5	38.5	43.2	-24.52	-1,221.1	-1,615.6	271.0	225.7	45.33	5.979 SF	
5,300.0	4,914.4	5,278.4	4,795.0	38.8	43.6	-24.46	-1,230.9	-1,629.3	273.1	227.5	45.63	5.985	
5,400.0	5,006.2	5,378.1	4,883.0	39.5	44.5	-24.11	-1,258.2	-1,667.4	281.0	234.7	46.27	6.073	
5,500.0	5,099.2	5,477.4	4,970.6	40.1	45.5	-23.53	-1,285.4	-1,705.4	292.1	245.4	46.68	6.259	
5,600.0	5,193.5	5,576.3	5,057.8	40.6	46.5	-22.76	-1,312.5	-1,743.2	306.5	259.6	46.87	6.539	
5,700.0	5,288.9	5,674.6	5,144.6	41.1	47.5	-21.87	-1,339.4	-1,780.8	324.1	277.2	46.89	6.911	
5,800.0	5,385.3	5,772.1	5,230.6	41.5	48.5	-20.89	-1,366.2	-1,818.1	345.0	298.2	46.78	7.375	
5,900.0	5,482.6	5,868.9	5,316.0	41.9	49.4	-19.87	-1,392.7	-1,855.1	369.2	322.6	46.56	7.929	
6,000.0	5,580.6	5,964.7	5,400.6	42.3	50.4	-18.84	-1,419.0	-1,891.8	396.7	350.4	46.27	8.574	
6,100.0	5,679.2	6,059.4	5,484.2	42.5	51.3	-17.84	-1,444.9	-1,928.0	427.6	381.6	45.93	9.310	
6,200.0	5,778.4	6,153.0	5,566.7	42.8	52.3	-16.88	-1,470.6	-1,963.8	461.7	416.2	45.55	10.138	
6,300.0	5,877.9	6,245.3	5,648.2	43.0	53.2	-15.98	-1,495.9	-1,999.1	499.2	454.1	45.14	11.060	
6,400.0	5,977.7	6,356.4	5,747.1	43.1	54.1	-14.96	-1,525.2	-2,040.1	538.2	493.6	44.62	12.062	
6,500.0	6,077.7	6,469.9	5,850.2	43.2	54.8	-14.07	-1,552.9	-2,078.7	576.9	532.8	44.11	13.079	
6,522.3	6,100.0	6,495.5	5,873.7	43.2	55.0	-137.79	-1,558.8	-2,087.0	585.5	541.5	44.00	13.307	
6,600.0	6,177.7	6,586.0	5,957.5	43.2	55.6	-137.07	-1,578.7	-2,114.8	614.3	570.4	43.93	13.985	
6,700.0	6,277.7	6,705.9	6,070.2	43.3	56.3	-136.31	-1,602.7	-2,148.2	648.1	604.2	43.95	14.746	
6,800.0	6,377.7	6,829.4	6,187.8	43.4	56.9	-135.70	-1,624.5	-2,178.7	678.0	633.9	44.07	15.384	
6,900.0	6,477.7	6,956.1	6,310.0	43.4	57.4	-135.21	-1,643.8	-2,205.6	703.8	659.5	44.26	15.902	

CC - Min centre to center distance or convergent point, SF - min separation factor, ES - min ellipse separation

Company:	Synergy Resources	Local Co-ordinate Reference:	Well SRC Aims 10PD
Project:	SEC.10-T5N-R66W	TVD Reference:	WELL @ 4872.0ft (Original Well Elev)
Reference Site:	SRC Aims/GCC Pad Sec.10-T5N-R66W	MD Reference:	WELL @ 4872.0ft (Original Well Elev)
Site Error:	0.0ft	North Reference:	True
Reference Well:	SRC Aims 10PD	Survey Calculation Method:	Minimum Curvature
Well Error:	0.0ft	Output errors are at	2.00 sigma
Reference Wellbore	Wellbore #1	Database:	Landmark
Reference Design:	Plan #2 (9-21-11)	Offset TVD Reference:	Offset Datum

Offset Design												Offset Site Error:	0.0 ft
SRC Aims/GCC Pad Sec.10-T5N-R66W - SRC Aims 24-10D - Wellbore #1 - Plan #2 (9-21-11)												Offset Well Error:	0.0 ft
Survey Program: 0-MWD													
Reference		Offset		Semi Major Axis			Distance						
Measured Depth (ft)	Vertical Depth (ft)	Measured Depth (ft)	Vertical Depth (ft)	Reference (ft)	Offset (ft)	Highside Toolface (°)	Offset Wellbore Centre +N/-S (ft)	+E/-W (ft)	Between Centres (ft)	Between Ellipses (ft)	Minimum Separation (ft)	Separation Factor	Warning
7,000.0	6,577.7	7,085.5	6,436.4	43.5	57.9	-134.83	-1,660.2	-2,228.5	725.3	680.8	44.49	16.303	
7,100.0	6,677.7	7,200.2	6,549.2	43.6	58.2	-134.58	-1,672.2	-2,245.3	743.0	698.3	44.74	16.608	
7,200.0	6,777.7	7,298.7	6,646.2	43.6	58.6	-134.37	-1,682.2	-2,259.2	760.2	715.2	45.00	16.894	
7,300.0	6,877.7	7,397.2	6,743.2	43.7	59.0	-134.18	-1,692.2	-2,273.1	777.4	732.1	45.27	17.173	
7,400.0	6,977.7	7,495.7	6,840.1	43.8	59.4	-133.99	-1,702.1	-2,287.0	794.5	749.0	45.54	17.446	
7,500.0	7,077.7	7,594.1	6,937.1	43.8	59.7	-133.81	-1,712.1	-2,300.9	811.7	765.9	45.83	17.713	
7,600.0	7,177.7	7,692.6	7,034.1	43.9	60.1	-133.64	-1,722.0	-2,314.8	828.9	782.8	46.12	17.974	
7,700.0	7,277.7	7,791.1	7,131.1	44.0	60.5	-133.48	-1,732.0	-2,328.7	846.1	799.7	46.41	18.230	
7,800.0	7,377.7	7,889.6	7,228.1	44.1	60.8	-133.32	-1,742.0	-2,342.6	863.3	816.6	46.72	18.479	
7,900.0	7,477.7	7,988.1	7,325.1	44.1	61.2	-133.17	-1,751.9	-2,356.5	880.5	833.5	47.03	18.723	
8,000.0	7,577.7	8,086.5	7,422.1	44.2	61.6	-133.02	-1,761.9	-2,370.4	897.8	850.4	47.35	18.962	
8,100.0	7,677.7	8,185.0	7,519.0	44.3	62.0	-132.88	-1,771.8	-2,384.3	915.0	867.3	47.67	19.195	
8,200.0	7,777.7	8,283.5	7,616.0	44.4	62.3	-132.75	-1,781.8	-2,398.2	932.2	884.2	47.99	19.424	
8,300.0	7,877.7	8,382.0	7,713.0	44.4	62.7	-132.62	-1,791.8	-2,412.1	949.5	901.1	48.33	19.647	
8,387.3	7,965.0	8,468.0	7,797.7	44.5	63.0	-132.51	-1,800.5	-2,424.2	964.5	915.9	48.62	19.838	

SRC Aims/GCC Pad Sec.10-T5N-R66W - SRC Aims 33-10D - Wellbore #1 - Plan #2 (9-21-11)													Offset Site Error:	0.0 ft
Survey Program: 0-MWD													Offset Well Error:	0.0 ft
Reference		Offset		Semi Major Axis			Distance							Warning
Measured Depth (ft)	Vertical Depth (ft)	Measured Depth (ft)	Vertical Depth (ft)	Reference (ft)	Offset (ft)	Highside Toolface (°)	Offset Wellbore Centre +N/-S (ft)	+E/-W (ft)	Between Centres (ft)	Between Ellipses (ft)	Minimum Separation (ft)	Separation Factor		
0.0	0.0	0.0	0.0	0.0	0.0	-57.05	7.3	-11.2	13.4	13.4	0.00	N/A		
100.0	100.0	100.0	100.0	0.1	0.1	-57.05	7.3	-11.2	13.4	13.1	0.22	59.398		
200.0	200.0	200.0	200.0	0.3	0.3	-57.05	7.3	-11.2	13.4	12.7	0.67	19.799		
300.0	300.0	300.0	300.0	0.6	0.6	-57.05	7.3	-11.2	13.4	12.2	1.12	11.880 CC, ES		
400.0	400.0	399.7	399.7	0.8	0.8	-62.88	6.5	-12.8	14.4	12.8	1.56	9.228		
500.0	500.0	499.3	499.1	1.0	1.0	52.34	4.4	-17.5	17.0	15.0	1.97	8.626		
600.0	599.8	598.7	598.2	1.2	1.2	47.31	0.8	-25.4	20.2	17.8	2.39	8.468		
700.0	699.5	698.0	696.7	1.4	1.5	44.78	-4.1	-36.3	23.9	21.1	2.84	8.417		
800.0	798.7	797.2	794.7	1.7	1.8	43.87	-10.5	-50.4	28.0	24.7	3.34	8.383		
900.0	897.5	896.2	892.0	2.0	2.2	43.99	-18.3	-67.5	32.4	28.5	3.90	8.324		
1,000.0	995.6	995.1	988.3	2.4	2.6	44.77	-27.4	-87.6	37.2	32.7	4.52	8.221		
1,100.0	1,093.1	1,094.0	1,083.8	2.8	3.1	45.96	-37.9	-110.8	42.3	37.0	5.24	8.068		
1,200.0	1,189.6	1,193.9	1,180.0	3.3	3.7	48.90	-49.1	-135.5	46.3	40.2	6.10	7.582		
1,300.0	1,285.3	1,293.7	1,276.1	3.8	4.2	54.63	-60.3	-160.2	48.3	41.1	7.18	6.717		
1,400.0	1,379.8	1,393.4	1,372.0	4.5	4.8	63.37	-71.5	-184.9	49.0	40.5	8.55	5.734		
1,500.0	1,473.2	1,492.9	1,467.7	5.2	5.3	75.40	-82.6	-209.5	49.9	39.7	10.17	4.906		
1,600.0	1,565.2	1,591.9	1,563.1	5.9	5.9	90.19	-93.7	-234.0	52.8	41.0	11.79	4.479		
1,658.1	1,618.1	1,649.3	1,618.3	6.4	6.2	99.34	-100.2	-248.2	56.2	43.7	12.56	4.477 SF		
1,700.0	1,656.0	1,690.5	1,658.0	6.8	6.5	105.60	-104.8	-258.4	59.6	46.6	12.99	4.587		
1,800.0	1,746.5	1,789.0	1,752.7	7.6	7.0	117.72	-115.8	-282.8	70.1	56.3	13.74	5.100		
1,900.0	1,837.0	1,887.5	1,847.5	8.5	7.6	126.45	-126.9	-307.2	82.9	68.6	14.30	5.796		
2,000.0	1,927.5	1,986.0	1,942.3	9.4	8.2	132.77	-137.9	-331.6	97.1	82.2	14.81	6.555		
2,100.0	2,018.0	2,084.5	2,037.1	10.2	8.7	137.45	-149.0	-356.0	112.1	96.8	15.33	7.312		
2,200.0	2,108.5	2,183.0	2,131.9	11.1	9.3	141.02	-160.0	-380.4	127.7	111.8	15.88	8.040		
2,300.0	2,199.0	2,281.5	2,226.7	12.0	9.9	143.80	-171.1	-404.7	143.7	127.2	16.47	8.725		
2,400.0	2,289.5	2,380.0	2,321.5	12.9	10.4	146.02	-182.1	-429.1	159.9	142.9	17.08	9.364		
2,500.0	2,380.1	2,478.5	2,416.3	13.8	11.0	147.83	-193.2	-453.5	176.4	158.7	17.72	9.956		
2,600.0	2,470.6	2,577.0	2,511.1	14.7	11.6	149.33	-204.2	-477.9	193.0	174.6	18.37	10.503		
2,700.0	2,561.1	2,675.5	2,605.9	15.6	12.2	150.60	-215.3	-502.3	209.6	190.6	19.04	11.010		
2,800.0	2,651.6	2,774.0	2,700.7	16.5	12.7	151.68	-226.3	-526.6	226.4	206.7	19.72	11.479		
2,900.0	2,742.1	2,872.5	2,795.5	17.3	13.3	152.60	-237.4	-551.0	243.3	222.8	20.42	11.913		
3,000.0	2,832.6	2,971.0	2,890.3	18.2	13.9	153.41	-248.4	-575.4	260.2	239.0	21.12	12.316		
3,100.0	2,923.1	3,069.5	2,985.1	19.1	14.5	154.12	-259.5	-599.8	277.1	255.3	21.83	12.691		
3,200.0	3,013.6	3,168.0	3,079.8	20.0	15.0	154.75	-270.5	-624.2	294.1	271.5	22.55	13.040		
3,300.0	3,104.1	3,266.5	3,174.6	20.9	15.6	155.31	-281.6	-648.6	311.1	287.8	23.28	13.365		
3,400.0	3,194.6	3,365.0	3,269.4	21.8	16.2	155.81	-292.6	-672.9	328.1	304.1	24.00	13.669		
3,500.0	3,285.2	3,463.5	3,364.2	22.7	16.8	156.27	-303.7	-697.3	345.2	320.4	24.74	13.954		
3,600.0	3,375.7	3,562.0	3,459.0	23.6	17.3	156.67	-314.7	-721.7	362.3	336.8	25.47	14.221		
3,700.0	3,466.2	3,660.5	3,553.8	24.5	17.9	157.05	-325.8	-746.1	379.3	353.1	26.21	14.472		
3,800.0	3,556.7	3,759.0	3,648.6	25.4	18.5	157.39	-336.8	-770.5	396.5	369.5	26.95	14.708		
3,900.0	3,647.2	3,857.5	3,743.4	26.3	19.1	157.70	-347.9	-794.9	413.6	385.9	27.70	14.931		
4,000.0	3,737.7	3,956.0	3,838.2	27.2	19.6	157.99	-358.9	-819.2	430.7	402.3	28.45	15.141		
4,100.0	3,828.2	4,054.5	3,933.0	28.1	20.2	158.25	-370.0	-843.6	447.8	418.6	29.20	15.340		
4,200.0	3,918.7	4,153.0	4,027.8	29.0	20.8	158.50	-381.0	-868.0	465.0	435.0	29.95	15.528		
4,300.0	4,009.2	4,251.5	4,122.6	29.9	21.4	158.73	-392.1	-892.4	482.1	451.4	30.70	15.706		
4,400.0	4,099.7	4,350.0	4,217.4	30.8	22.0	158.94	-403.1	-916.8	499.3	467.9	31.45	15.875		
4,500.0	4,190.3	4,448.5	4,312.1	31.7	22.5	159.14	-414.2	-941.1	516.5	484.3	32.21	16.036		
4,600.0	4,280.8	4,547.0	4,406.9	32.6	23.1	159.32	-425.2	-965.5	533.7	500.7	32.96	16.189		
4,700.0	4,371.3	4,645.5	4,501.7	33.5	23.7	159.50	-436.3	-989.9	550.8	517.1	33.72	16.335		
4,800.0	4,461.8	4,744.0	4,596.5	34.4	24.3	159.66	-447.3	-1,014.3	568.0	533.5	34.48	16.474		
4,900.0	4,552.3	4,842.5	4,691.3	35.3	24.8	159.82	-458.4	-1,038.7	585.2	550.0	35.24	16.607		
5,000.0	4,642.8	4,930.6	4,776.2	36.2	25.3	159.97	-468.0	-1,060.0	603.0	567.1	35.92	16.787		

COMPASS 2003.21 Build 46

Company:	Synergy Resources	Local Co-ordinate Reference:	Well SRC Aims 10PD
Project:	SEC.10-T5N-R66W	TVD Reference:	WELL @ 4872.0ft (Original Well Elev)
Reference Site:	SRC Aims/GCC Pad Sec.10-T5N-R66W	MD Reference:	WELL @ 4872.0ft (Original Well Elev)
Site Error:	0.0ft	North Reference:	True
Reference Well:	SRC Aims 10PD	Survey Calculation Method:	Minimum Curvature
Well Error:	0.0ft	Output errors are at	2.00 sigma
Reference Wellbore	Wellbore #1	Database:	Landmark
Reference Design:	Plan #2 (9-21-11)	Offset TVD Reference:	Offset Datum

Offset Design												Offset Site Error:	0.0ft
SRC Aims/GCC Pad Sec.10-T5N-R66W - SRC Aims 33-10D - Wellbore #1 - Plan #2 (9-21-11)												Offset Well Error:	0.0ft
Survey Program: 0-MWD													
Reference		Offset		Semi Major Axis			Distance						
Measured Depth (ft)	Vertical Depth (ft)	Measured Depth (ft)	Vertical Depth (ft)	Reference (ft)	Offset (ft)	Highside Toolface (°)	Offset Wellbore Centre +N/-S (ft)	+E/-W (ft)	Between Centres (ft)	Between Ellipses (ft)	Minimum Separation (ft)	Separation Factor	Warning
5,100.0	4,733.3	5,013.0	4,856.3	37.1	25.6	160.22	-476.1	-1,077.9	623.1	586.6	36.50	17.073	
5,200.0	4,823.8	5,100.0	4,941.3	38.0	25.9	160.57	-483.7	-1,094.5	645.8	608.8	37.01	17.449	
5,264.2	4,881.9	5,146.2	4,986.6	38.5	26.0	160.79	-487.2	-1,102.4	661.5	624.2	37.30	17.736	
5,300.0	4,914.4	5,174.9	5,014.9	38.8	26.1	161.00	-489.3	-1,107.0	670.6	633.2	37.45	17.905	
5,400.0	5,006.2	5,254.7	5,093.8	39.5	26.3	161.56	-494.4	-1,118.3	695.4	657.5	37.82	18.386	
5,500.0	5,099.2	5,334.2	5,172.6	40.1	26.5	162.08	-498.6	-1,127.5	719.3	681.2	38.13	18.863	
5,600.0	5,193.5	5,413.3	5,251.3	40.6	26.7	162.59	-501.9	-1,134.8	742.5	704.1	38.40	19.339	
5,700.0	5,288.9	5,500.0	5,337.8	41.1	26.8	163.10	-504.5	-1,140.4	765.0	726.4	38.60	19.820	
5,800.0	5,385.3	5,570.4	5,408.1	41.5	26.9	163.53	-505.8	-1,143.3	786.5	747.8	38.75	20.299	
5,900.0	5,482.6	5,648.4	5,486.1	41.9	27.0	163.98	-506.4	-1,144.6	807.2	768.4	38.84	20.784	
6,000.0	5,580.6	5,742.9	5,580.6	42.3	27.1	164.45	-506.4	-1,144.6	826.3	787.4	38.88	21.251	
6,100.0	5,679.2	5,841.5	5,679.2	42.5	27.2	164.83	-506.4	-1,144.6	842.2	803.2	38.93	21.635	
6,200.0	5,778.4	5,940.7	5,778.4	42.8	27.3	165.12	-506.4	-1,144.6	854.7	815.7	38.96	21.938	
6,300.0	5,877.9	6,040.2	5,877.9	43.0	27.4	165.33	-506.4	-1,144.6	863.9	824.9	38.98	22.160	
6,400.0	5,977.7	6,140.0	5,977.7	43.1	27.5	165.46	-506.4	-1,144.6	869.7	830.7	38.99	22.303	
6,500.0	6,077.7	6,240.0	6,077.7	43.2	27.6	165.51	-506.4	-1,144.6	872.1	833.1	38.99	22.368	
6,522.3	6,100.0	6,262.3	6,100.0	43.2	27.6	41.61	-506.4	-1,144.6	872.2	833.2	38.99	22.371	
6,600.0	6,177.7	6,340.0	6,177.7	43.2	27.7	41.61	-506.4	-1,144.6	872.2	833.0	39.19	22.253	
6,700.0	6,277.7	6,440.0	6,277.7	43.3	27.8	41.61	-506.4	-1,144.6	872.2	832.8	39.46	22.102	
6,800.0	6,377.7	6,540.0	6,377.7	43.4	27.9	41.61	-506.4	-1,144.6	872.2	832.5	39.73	21.952	
6,900.0	6,477.7	6,640.0	6,477.7	43.4	28.0	41.61	-506.4	-1,144.6	872.2	832.2	40.01	21.801	
7,000.0	6,577.7	6,740.0	6,577.7	43.5	28.1	41.61	-506.4	-1,144.6	872.2	831.9	40.28	21.651	
7,100.0	6,677.7	6,840.0	6,677.7	43.6	28.2	41.61	-506.4	-1,144.6	872.2	831.7	40.56	21.502	
7,200.0	6,777.7	6,940.0	6,777.7	43.6	28.3	41.61	-506.4	-1,144.6	872.2	831.4	40.85	21.353	
7,300.0	6,877.7	7,040.0	6,877.7	43.7	28.4	41.61	-506.4	-1,144.6	872.2	831.1	41.13	21.204	
7,400.0	6,977.7	7,140.0	6,977.7	43.8	28.5	41.61	-506.4	-1,144.6	872.2	830.8	41.42	21.056	
7,500.0	7,077.7	7,240.0	7,077.7	43.8	28.6	41.61	-506.4	-1,144.6	872.2	830.5	41.71	20.909	
7,600.0	7,177.7	7,340.0	7,177.7	43.9	28.7	41.61	-506.4	-1,144.6	872.2	830.2	42.01	20.763	
7,700.0	7,277.7	7,440.0	7,277.7	44.0	28.8	41.61	-506.4	-1,144.6	872.2	829.9	42.31	20.617	
7,800.0	7,377.7	7,540.0	7,377.7	44.1	29.0	41.61	-506.4	-1,144.6	872.2	829.6	42.61	20.472	
7,900.0	7,477.7	7,640.0	7,477.7	44.1	29.1	41.61	-506.4	-1,144.6	872.2	829.3	42.91	20.327	
8,000.0	7,577.7	7,740.0	7,577.7	44.2	29.2	41.61	-506.4	-1,144.6	872.2	829.0	43.21	20.184	
8,100.0	7,677.7	7,840.0	7,677.7	44.3	29.3	41.61	-506.4	-1,144.6	872.2	828.7	43.52	20.041	
8,200.0	7,777.7	7,940.0	7,777.7	44.4	29.4	41.61	-506.4	-1,144.6	872.2	828.4	43.83	19.900	
8,300.0	7,877.7	8,040.0	7,877.7	44.4	29.5	41.61	-506.4	-1,144.6	872.2	828.1	44.14	19.759	
8,387.3	7,965.0	8,127.3	7,965.0	44.5	29.6	41.61	-506.4	-1,144.6	872.2	827.8	44.42	19.637	

Company:	Synergy Resources	Local Co-ordinate Reference:	Well SRC Aims 10PD
Project:	SEC.10-T5N-R66W	TVD Reference:	WELL @ 4872.0ft (Original Well Elev)
Reference Site:	SRC Aims/GCC Pad Sec.10-T5N-R66W	MD Reference:	WELL @ 4872.0ft (Original Well Elev)
Site Error:	0.0ft	North Reference:	True
Reference Well:	SRC Aims 10PD	Survey Calculation Method:	Minimum Curvature
Well Error:	0.0ft	Output errors are at	2.00 sigma
Reference Wellbore	Wellbore #1	Database:	Landmark
Reference Design:	Plan #2 (9-21-11)	Offset TVD Reference:	Offset Datum

Reference Depths are relative to WELL @ 4872.0ft (Original Well Elev) Coordinates are relative to: SRC Aims 10PD
 Offset Depths are relative to Offset Datum Coordinate System is US State Plane 1983, Wyoming Western Zone
 Central Meridian is -110.083333 ° Grid Convergence at Surface is: 3.46°



Company:	Synergy Resources	Local Co-ordinate Reference:	Well SRC Aims 10PD
Project:	SEC.10-T5N-R66W	TVD Reference:	WELL @ 4872.0ft (Original Well Elev)
Reference Site:	SRC Aims/GCC Pad Sec.10-T5N-R66W	MD Reference:	WELL @ 4872.0ft (Original Well Elev)
Site Error:	0.0ft	North Reference:	True
Reference Well:	SRC Aims 10PD	Survey Calculation Method:	Minimum Curvature
Well Error:	0.0ft	Output errors are at	2.00 sigma
Reference Wellbore	Wellbore #1	Database:	Landmark
Reference Design:	Plan #2 (9-21-11)	Offset TVD Reference:	Offset Datum

Reference Depths are relative to WELL @ 4872.0ft (Original Well Elev) Coordinates are relative to: SRC Aims 10PD
 Offset Depths are relative to Offset Datum Coordinate System is US State Plane 1983, Wyoming Western Zone
 Central Meridian is -110.083333 ° Grid Convergence at Surface is: 3.46°

