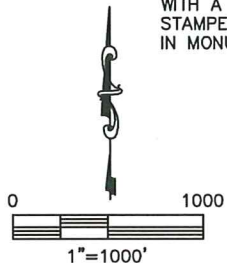
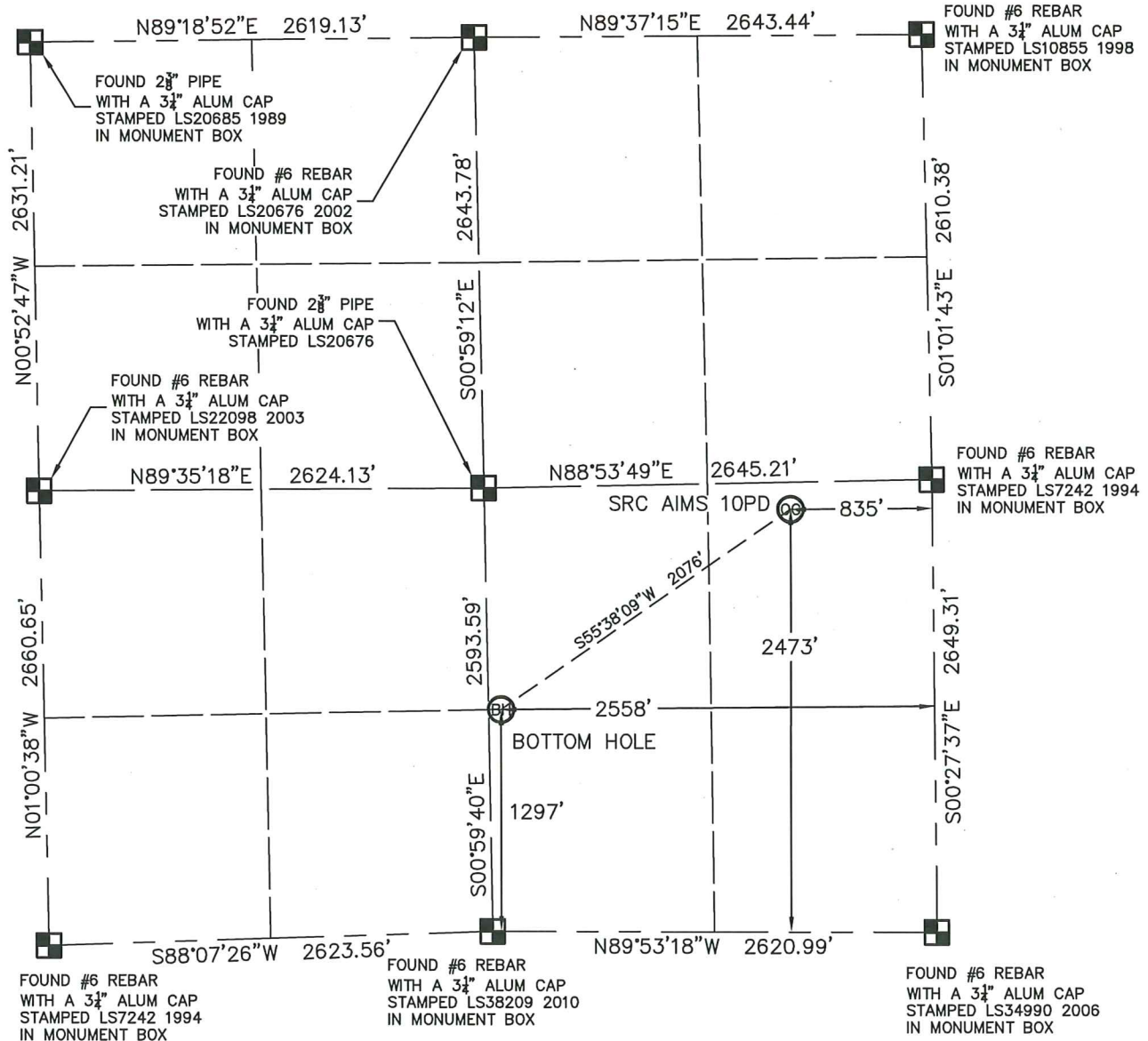


## WELL LOCATION CERTIFICATE

SRC AIMS 10PD

THIS MAP DOES NOT REPRESENT A BOUNDARY SURVEY

SECTION: 10  
TOWNSHIP: 5N  
RANGE: 66WIn accordance with a request from CRAIG RASMUSON with SYNERGY RESOURCES CORPORATION

King Surveyors Inc. has determined the surface location of SRC AIMS 10PD to be 2473' from the SOUTH line and 835' from the EAST line and the bottom hole to be 1297' from the SOUTH line and 2558' from the EAST line, as measured at right angles, from the section lines of Section 10, Township 5 North, Range 66 West of the Sixth Principal Meridian, County of Weld, State of Colorado.

I hereby state that this Well Location Certificate was prepared by me, or under my direct supervision, that the fieldwork was completed on 9-14-2011, for and on behalf of SYNERGY RESOURCES CORPORATION. That this is not a Land Survey Plat or an Improvement Survey Plat, and that it is not to be relied upon for establishment of fence, building, or other future improvement lines.

## NOTE:

- 1) Bearings shown are Grid Bearings of the Colorado State Plane Coordinate System, North Zone, North American Datum 1983/2007. The lineal dimensions as contained herein are based upon the "U.S. Survey Foot."
- 2) Ground elevations are based on an observed GPS elevation (NAVD 1988 DATUM).
- 3) NEAREST EXISTING WELL: NO EXISTING WELLS IN THIS SECTION
- 4) IMPROVEMENTS: See LOCATION DRAWING exhibit for all visible improvements within 400' of disturbed area.
- 5) SURFACE USE: OPEN FIELD
- 6) FIELD OPERATOR: CHAD DILKA

## SURFACE LOCATION

LATITUDE: 40.41368°N  
LONGITUDE: 104.75929°W  
PDOP: 2.1  
ELEV: 4859'  
1/4, 1/4: NE 1/4 SE 1/4  
NEAREST PROPERTY LINE: 159' NORTH

## BOTTOM HOLE

LATITUDE: 40.41050°N  
LONGITUDE: 104.76548°W

## LEGEND

- = FOUND ALIQUOT MONUMENT AS DESCRIBED
- = CALCULATED POSITION
- = SET ALIQUOT MONUMENT AS DESCRIBED

## NOTE

According to Colorado law, you must commence any legal action based upon any defect in this W.L.C. within three years after you discover such defect. In no event, may any action based upon any defect in this survey be commenced more than ten years after the date of the certificate shown hereon. (13-80-105 C.R.S.)

*Michael Chad Dilka* 9/15/2011  
Michael Chad Dilka - On Behalf Of King Surveyors, Inc.  
Colorado Licensed Professional Land Surveyor #38106  
PROJECT#: 2011174

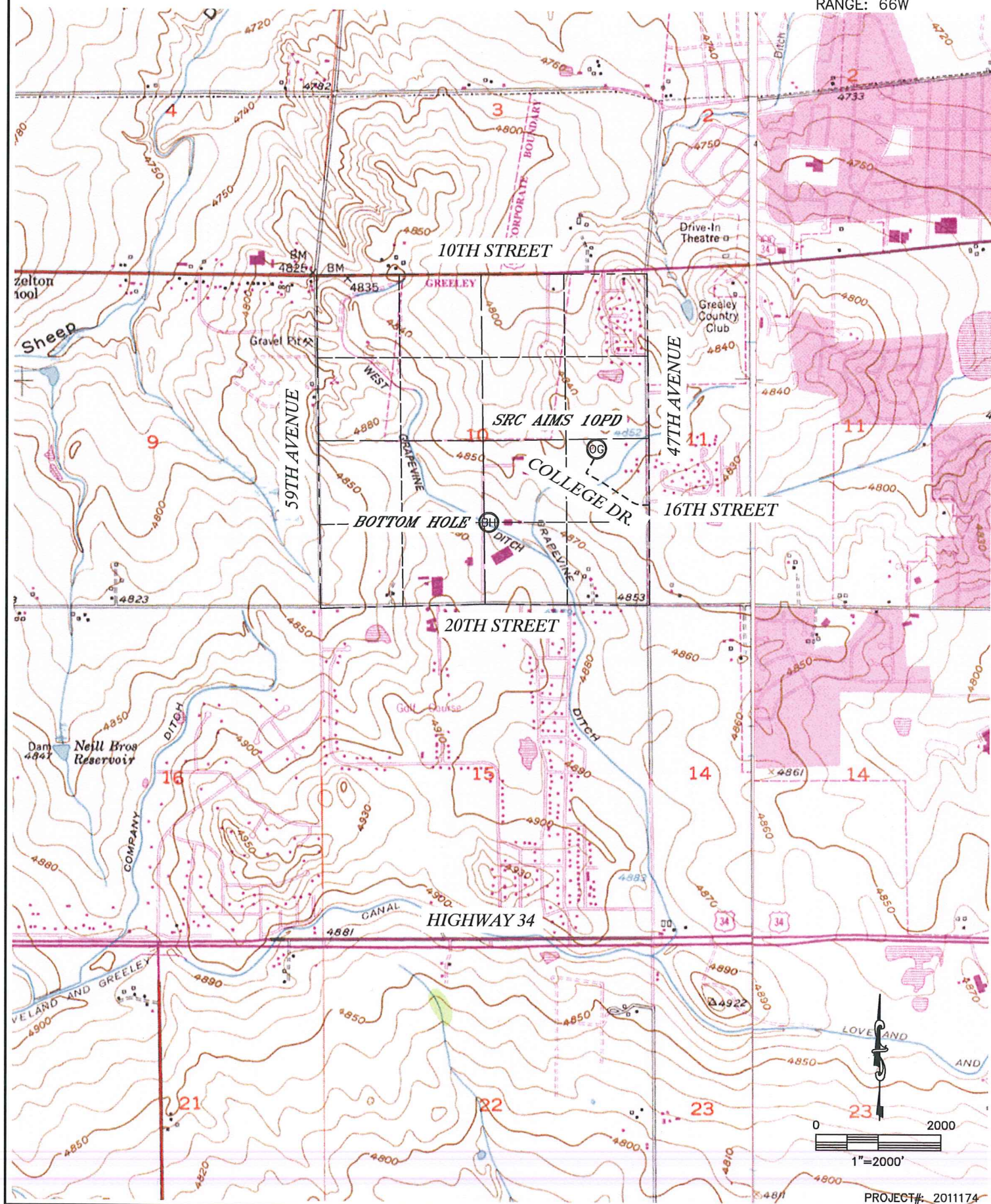


KING SURVEYORS, INC. 650 E. GARDEN DR. WINDSOR, CO 80550

# ACCESS ROAD MAP

SRC AIMS 10PD

SECTION: 10  
TOWNSHIP: 5N  
RANGE: 66W



PROJECT#: 2011174

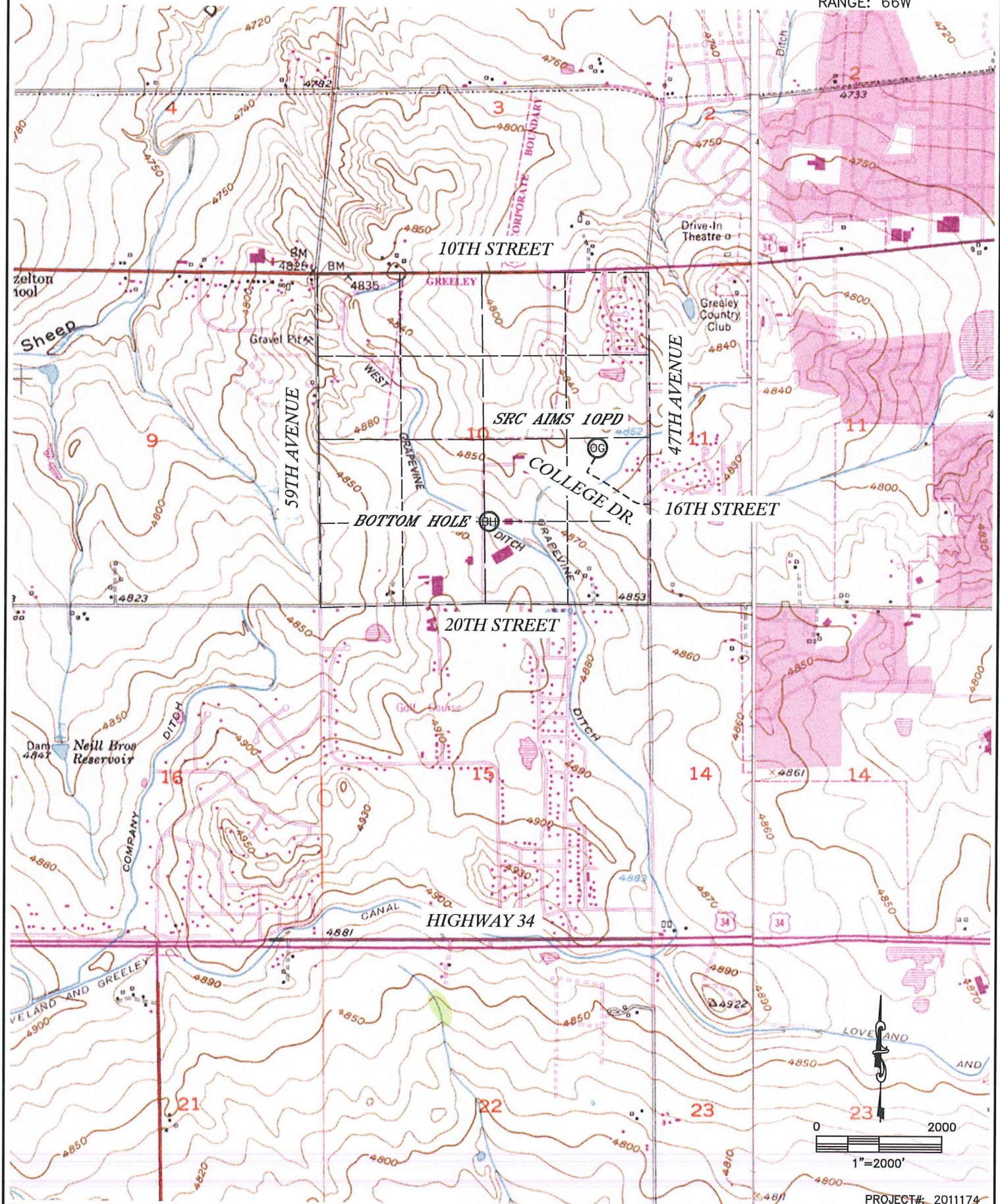


KING SURVEYORS, INC. 650 E. GARDEN DR. WINDSOR, CO 80550

# TOPOGRAPHIC MAP

SRC AIMS 10PD

SECTION: 10  
TOWNSHIP: 5N  
RANGE: 66W





# LOCATION DRAWING

SRC AIMS 10PD

SECTION: 10  
TOWNSHIP: 5N  
RANGE: 66W



- (A) PROPERTY LINE 159'N, 369'E, 496'SE
- (B) OVERHEAD UTILITY LINE 148'N, 368'E
- (C) FENCE 161'N, 369'E, 491'SW, 512'NW
- (D) WATERLINE 32'NW, 134'NW, 207'SW, 224'SW
- (E) BLOWOFF 209'SW, 236'SW, 256'SW, 503'SE
- (F) WATER MANHOLE 265'SW, 344'SW
- (G) WATER VALVE 338'SW, 368'SW, 501'SE
- (H) ANTENNA 257'SW
- (I) ELECTRIC METER 262'SW
- (J) IRRIGATION CONTROL BOX 454'SW
- (K) BOLLARD 422'SW, 531'S
- (L) AIMS SIGN 482'SW
- (M) LIGHT POLE 398'SW
- (N) NE EDGE ASPHALT ROAD 396'SW
- (O) E EDGE FIELD ROAD 344'W

- (P) N EDGE DITCH ROAD 453'S
- (Q) NW EDGE IRRIGATION DITCH 451'SE, 451'S
- (R) CONCRETE IRRIGATION STRUCTURE 436'SW, 482'S
- (S) HOUSE 571'NW, 620'NW, 469'E, 638'E, 696'SE, 696'SE, 613'SE
- (T) GARAGE 660'SE
- (U) BARN/SHED 387'E, 536'SE, 655'SE, 688'SE, 617'SE, 592'NW
- (V) PUTTING GREEN 222'N, 364'NW
- (W) SAND TRAP 303'N, 333'NW, 451'NW
- (X) SW SIDE WATER HAZARD 485'NE
- (Y) TEE BOX 457'NE, 494'NW, 516'NW
- (Z) CART PATH 368'NE, 475'NW, 448'NW, 540'NW
- (AA) S EDGE FAIRWAY 195'N, 313'NW
- (BB) TELEPHONE PEDESTAL 516'NW, 772'NE
- (CC) WATER METER 486'SE, 516'SE
- (DD) CONCRETE MANHOLE 434' NE

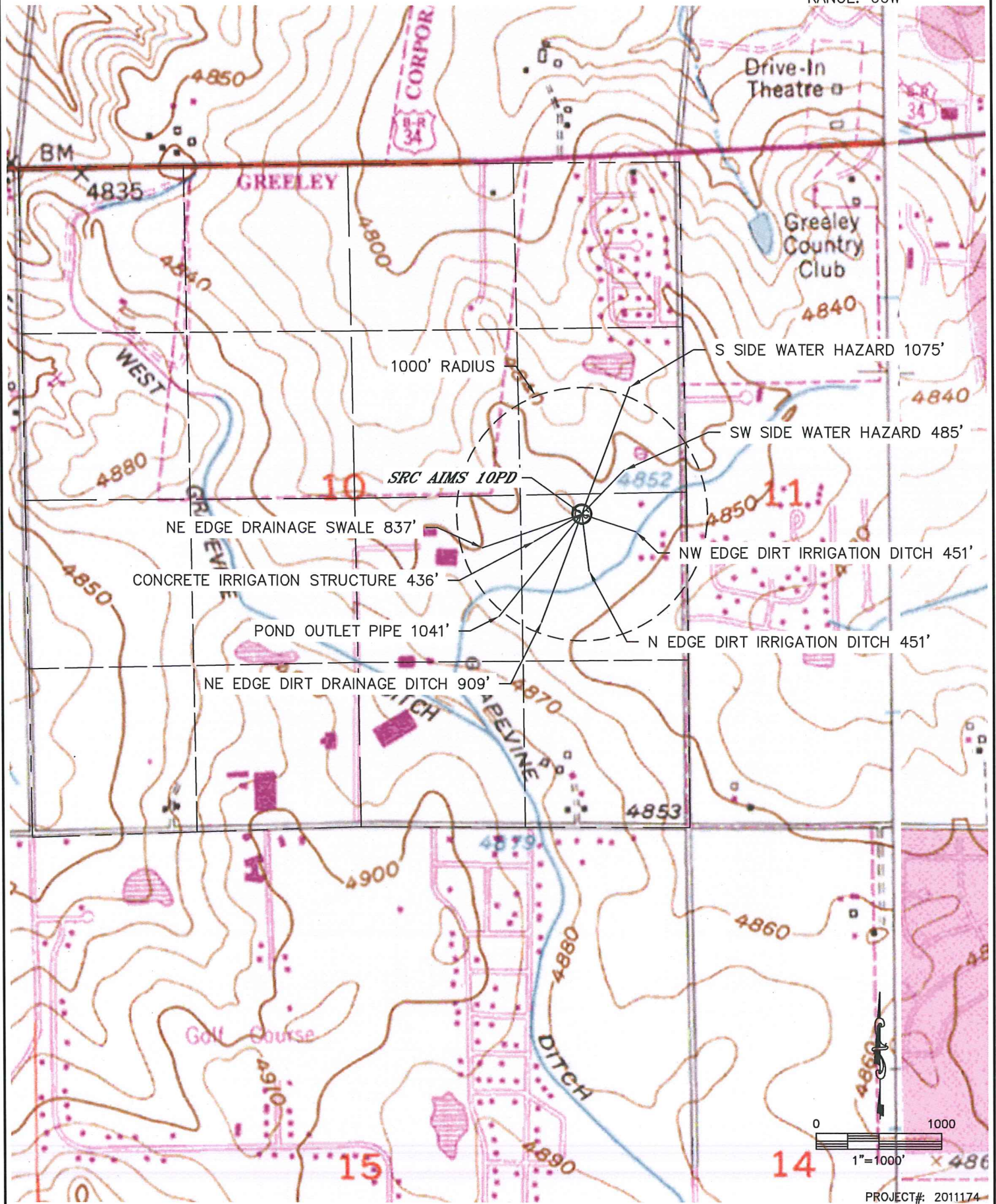
NEAREST:  
BUILDING=387' E  
PUBLIC ROAD=396' SW  
ABOVE GND UTILITY=148' N  
RAILROAD=5280'+  
PROPERTY LINE= 159' N



# HYDROLOGY MAP

SRC AIMS 10PD

SECTION: 10  
TOWNSHIP: 5N  
RANGE: 66W





SRC AIMS 10PD  
TOWNSHIP 5 NORTH, RANGE 66 WEST  
SECTION 10: NE1/4SE1/4  
WELD COUNTY, COLORADO

WELL FACING NORTH  
PICTURE DATED: 9/14/2011



WELL FACING SOUTH  
PICTURE DATED: 9/14/2011



SRC AIMS 10PD  
TOWNSHIP 5 NORTH, RANGE 66 WEST  
SECTION 10: NE1/4SE1/4  
WELD COUNTY, COLORADO

WELL FACING EAST  
PICTURE DATED: 9/14/2011



WELL FACING WEST  
PICTURE DATED: 9/14/2011





SRC AIMS 10PD  
TOWNSHIP 5 NORTH, RANGE 66 WEST  
SECTION 10: NE1/4SE1/4  
WELD COUNTY, COLORADO

REFERENCE AREA FACING WEST  
PICTURE DATED: 9/14/2011

