

ENSIGN

Directional

Well Name: SRC Aims 23-10D

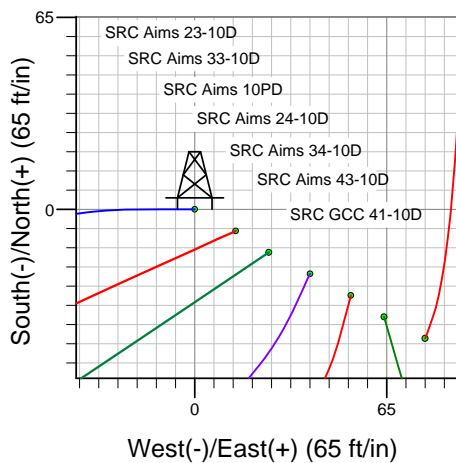
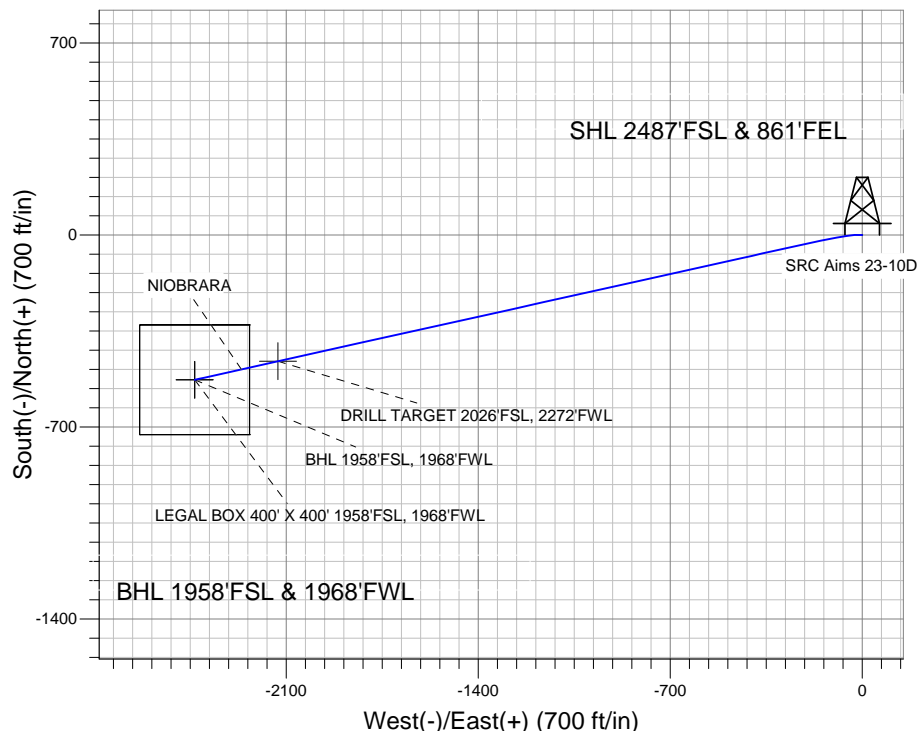
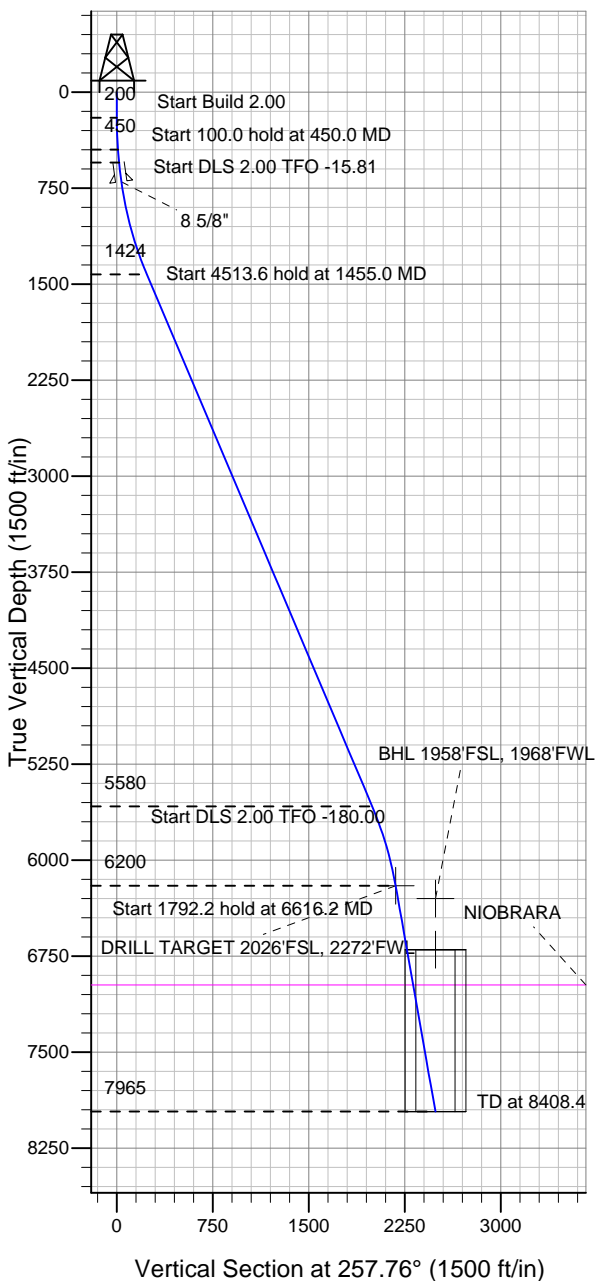
Surface Location: SRC Aims/GCC Pad Sec.10-T5N-R66W
North American Datum 1983 US State Plane 1983 Wyoming Western Zone

Ground Elevation: 4859.0

+N/-S	+E/-W	Northing	Easting	Latitude	Longitude	Slot
0.0	0.0	341384.09	4107450.66	40.413720	-104.759380	

Original Well Elev WELL @ 4872.0ft (Original Well Elev)

Synergy Resources



SRC Aims/GCC Pad Sec.10-T5N-R66W
SRC Aims 23-10D
Plan #2 (9-21-11)
12:06, October 05 2011



Azimuths to True North
Magnetic North: 8.82°

Magnetic Field
Strength: 53106.6snT
Dip Angle: 67.05°
Date: 10/5/2011
Model: IGRF2010

WELLBORE TARGET DETAILS (LAT/LONG)

Name	TVD	+N/-S	+E/-W	Latitude	Longitude	Shape
DRILL TARGET 2026'FSL, 2272'FWL	6200.0	-460.4	-2130.0	40.412456	-104.767029	Point
BHL 1958'FSL, 1968'FWL	6300.0	-528.2	-2433.9	40.412270	-104.768120	Point
LEGAL BOX 400' X 400' 1958'FSL, 1968'FWL	6700.0	-528.2	-2433.9	40.412270	-104.768120	Rectangle (Sides: L400.0 W400.0)

SECTION DETAILS

Sec	MD	Inc	Azi	TVD	+N/-S	+E/-W	DLeg	TFace	VSec	Target
1	0.0	0.00	0.00	0.0	0.0	0.0	0.00	0.00	0.0	
2	200.0	0.00	0.00	200.0	0.0	0.0	0.00	0.00	0.0	
3	450.0	5.00	270.00	449.7	0.0	-10.9	2.00	270.00	10.7	
4	550.0	5.00	270.00	549.3	0.0	-19.6	0.00	0.00	19.2	
5	1455.0	22.95	257.46	1424.1	-38.6	-233.1	2.00	-15.81	236.0	
6	5968.6	22.95	257.46	5580.4	-420.6	-1951.2	0.00	0.00	1996.0	
7	6616.2	10.00	257.46	6200.0	-460.4	-2130.0	2.00	-180.00	2179.2	DRILL TARGET 2026'FSL, 2272'FWL
8	8408.4	10.00	257.46	7965.0	-528.0	-2433.8	0.00	0.00	2490.4	



Directional

Synergy Resources

SEC.10-T5N-R66W

SRC Aims/GCC Pad Sec.10-T5N-R66W

SRC Aims 23-10D

Wellbore #1

Plan: Plan #2 (9-21-11)

Standard Planning Report

05 October, 2011

Plan Sections										
Measured Depth (ft)	Inclination (°)	Azimuth (°)	Vertical Depth (ft)	+N/-S (ft)	+E/-W (ft)	Dogleg Rate (°/100ft)	Build Rate (°/100ft)	Turn Rate (°/100ft)	TFO (°)	Target
0.0	0.00	0.00	0.0	0.0	0.0	0.00	0.00	0.00	0.00	
200.0	0.00	0.00	200.0	0.0	0.0	0.00	0.00	0.00	0.00	
450.0	5.00	270.00	449.7	0.0	-10.9	2.00	2.00	0.00	270.00	
550.0	5.00	270.00	549.3	0.0	-19.6	0.00	0.00	0.00	0.00	
1,455.0	22.95	257.46	1,424.1	-38.6	-233.1	2.00	1.98	-1.39	-15.81	
5,968.6	22.95	257.46	5,580.4	-420.6	-1,951.2	0.00	0.00	0.00	0.00	
6,616.2	10.00	257.46	6,200.0	-460.4	-2,130.0	2.00	-2.00	0.00	-180.00	DRILL TARGET 20
8,408.4	10.00	257.46	7,965.0	-528.0	-2,433.8	0.00	0.00	0.00	0.00	

Database:	Landmark	Local Co-ordinate Reference:	Well SRC Aims 23-10D
Company:	Synergy Resources	TVD Reference:	WELL @ 4872.0ft (Original Well Elev)
Project:	SEC.10-T5N-R66W	MD Reference:	WELL @ 4872.0ft (Original Well Elev)
Site:	SRC Aims/GCC Pad Sec.10-T5N-R66W	North Reference:	True
Well:	SRC Aims 23-10D	Survey Calculation Method:	Minimum Curvature
Wellbore:	Wellbore #1		
Design:	Plan #2 (9-21-11)		

Planned Survey									
Measured Depth (ft)	Inclination (°)	Azimuth (°)	Vertical Depth (ft)	+N/-S (ft)	+E/-W (ft)	Vertical Section (ft)	Dogleg Rate (°/100ft)	Build Rate (°/100ft)	Turn Rate (°/100ft)
0.0	0.00	0.00	0.0	0.0	0.0	0.0	0.00	0.00	0.00
40.0	0.00	0.00	40.0	0.0	0.0	0.0	0.00	0.00	0.00
80.0	0.00	0.00	80.0	0.0	0.0	0.0	0.00	0.00	0.00
120.0	0.00	0.00	120.0	0.0	0.0	0.0	0.00	0.00	0.00
160.0	0.00	0.00	160.0	0.0	0.0	0.0	0.00	0.00	0.00
200.0	0.00	0.00	200.0	0.0	0.0	0.0	0.00	0.00	0.00
240.0	0.80	270.00	240.0	0.0	-0.3	0.3	2.00	2.00	0.00
280.0	1.60	270.00	280.0	0.0	-1.1	1.1	2.00	2.00	0.00
320.0	2.40	270.00	320.0	0.0	-2.5	2.5	2.00	2.00	0.00
360.0	3.20	270.00	359.9	0.0	-4.5	4.4	2.00	2.00	0.00
400.0	4.00	270.00	399.8	0.0	-7.0	6.8	2.00	2.00	0.00
440.0	4.80	270.00	439.7	0.0	-10.0	9.8	2.00	2.00	0.00
450.0	5.00	270.00	449.7	0.0	-10.9	10.7	2.00	2.00	0.00
480.0	5.00	270.00	479.6	0.0	-13.5	13.2	0.00	0.00	0.00
520.0	5.00	270.00	519.4	0.0	-17.0	16.6	0.00	0.00	0.00
550.0	5.00	270.00	549.3	0.0	-19.6	19.2	0.00	0.00	0.00
560.0	5.19	269.40	559.3	0.0	-20.5	20.0	2.00	1.93	-6.02
600.0	5.97	267.38	599.1	-0.1	-24.4	23.9	2.00	1.94	-5.05
640.0	6.75	265.83	638.8	-0.4	-28.8	28.2	2.00	1.95	-3.89
680.0	7.53	264.59	678.5	-0.8	-33.8	33.2	2.00	1.96	-3.08
701.7	7.96	264.03	700.0	-1.1	-36.7	36.1	2.00	1.97	-2.61
8 5/8"									
720.0	8.32	263.59	718.1	-1.4	-39.3	38.7	2.00	1.97	-2.37
760.0	9.11	262.76	757.7	-2.1	-45.3	44.7	2.00	1.98	-2.07
800.0	9.90	262.07	797.1	-3.0	-51.8	51.3	2.00	1.98	-1.74
840.0	10.70	261.47	836.5	-4.0	-58.9	58.4	2.00	1.98	-1.49
880.0	11.49	260.96	875.7	-5.2	-66.5	66.1	2.00	1.98	-1.28
920.0	12.29	260.51	914.9	-6.5	-74.6	74.3	2.00	1.99	-1.12
960.0	13.08	260.12	953.9	-8.0	-83.3	83.1	2.00	1.99	-0.99
1,000.0	13.88	259.77	992.8	-9.6	-92.5	92.4	2.00	1.99	-0.87
1,040.0	14.67	259.45	1,031.6	-11.4	-102.2	102.3	2.00	1.99	-0.78
1,080.0	15.47	259.17	1,070.2	-13.3	-112.4	112.7	2.00	1.99	-0.70
1,120.0	16.27	258.92	1,108.7	-15.4	-123.1	123.6	2.00	1.99	-0.64
1,160.0	17.06	258.69	1,147.0	-17.6	-134.4	135.1	2.00	1.99	-0.58
1,200.0	17.86	258.48	1,185.1	-20.0	-146.2	147.1	2.00	1.99	-0.53
1,240.0	18.66	258.28	1,223.1	-22.5	-158.4	159.6	2.00	1.99	-0.48
1,280.0	19.46	258.10	1,260.9	-25.2	-171.2	172.7	2.00	1.99	-0.45
1,320.0	20.26	257.94	1,298.5	-28.0	-184.5	186.3	2.00	2.00	-0.41
1,360.0	21.05	257.79	1,336.0	-31.0	-198.3	200.4	2.00	2.00	-0.38
1,400.0	21.85	257.64	1,373.2	-34.1	-212.6	215.0	2.00	2.00	-0.36
1,440.0	22.65	257.51	1,410.2	-37.4	-227.4	230.1	2.00	2.00	-0.33
1,455.0	22.95	257.46	1,424.1	-38.6	-233.1	236.0	2.00	2.00	-0.32
1,480.0	22.95	257.46	1,447.1	-40.7	-242.6	245.7	0.00	0.00	0.00
1,520.0	22.95	257.46	1,483.9	-44.1	-257.8	261.3	0.00	0.00	0.00
1,560.0	22.95	257.46	1,520.7	-47.5	-273.0	276.9	0.00	0.00	0.00
1,600.0	22.95	257.46	1,557.6	-50.9	-288.3	292.5	0.00	0.00	0.00
1,640.0	22.95	257.46	1,594.4	-54.3	-303.5	308.1	0.00	0.00	0.00
1,680.0	22.95	257.46	1,631.2	-57.7	-318.7	323.7	0.00	0.00	0.00
1,720.0	22.95	257.46	1,668.1	-61.0	-333.9	339.3	0.00	0.00	0.00
1,760.0	22.95	257.46	1,704.9	-64.4	-349.2	354.9	0.00	0.00	0.00
1,800.0	22.95	257.46	1,741.7	-67.8	-364.4	370.5	0.00	0.00	0.00
1,840.0	22.95	257.46	1,778.6	-71.2	-379.6	386.1	0.00	0.00	0.00
1,880.0	22.95	257.46	1,815.4	-74.6	-394.8	401.7	0.00	0.00	0.00
1,920.0	22.95	257.46	1,852.2	-78.0	-410.1	417.3	0.00	0.00	0.00

Database:	Landmark	Local Co-ordinate Reference:	Well SRC Aims 23-10D
Company:	Synergy Resources	TVD Reference:	WELL @ 4872.0ft (Original Well Elev)
Project:	SEC.10-T5N-R66W	MD Reference:	WELL @ 4872.0ft (Original Well Elev)
Site:	SRC Aims/GCC Pad Sec.10-T5N-R66W	North Reference:	True
Well:	SRC Aims 23-10D	Survey Calculation Method:	Minimum Curvature
Wellbore:	Wellbore #1		
Design:	Plan #2 (9-21-11)		

Planned Survey									
Measured Depth (ft)	Inclination (°)	Azimuth (°)	Vertical Depth (ft)	+N/-S (ft)	+E/-W (ft)	Vertical Section (ft)	Dogleg Rate (°/100ft)	Build Rate (°/100ft)	Turn Rate (°/100ft)
1,960.0	22.95	257.46	1,889.1	-81.4	-425.3	432.9	0.00	0.00	0.00
2,000.0	22.95	257.46	1,925.9	-84.7	-440.5	448.5	0.00	0.00	0.00
2,040.0	22.95	257.46	1,962.7	-88.1	-455.7	464.1	0.00	0.00	0.00
2,080.0	22.95	257.46	1,999.6	-91.5	-471.0	479.7	0.00	0.00	0.00
2,120.0	22.95	257.46	2,036.4	-94.9	-486.2	495.3	0.00	0.00	0.00
2,160.0	22.95	257.46	2,073.2	-98.3	-501.4	510.9	0.00	0.00	0.00
2,200.0	22.95	257.46	2,110.1	-101.7	-516.6	526.5	0.00	0.00	0.00
2,240.0	22.95	257.46	2,146.9	-105.1	-531.9	542.1	0.00	0.00	0.00
2,280.0	22.95	257.46	2,183.7	-108.4	-547.1	557.7	0.00	0.00	0.00
2,320.0	22.95	257.46	2,220.6	-111.8	-562.3	573.3	0.00	0.00	0.00
2,360.0	22.95	257.46	2,257.4	-115.2	-577.6	588.8	0.00	0.00	0.00
2,400.0	22.95	257.46	2,294.2	-118.6	-592.8	604.4	0.00	0.00	0.00
2,440.0	22.95	257.46	2,331.1	-122.0	-608.0	620.0	0.00	0.00	0.00
2,480.0	22.95	257.46	2,367.9	-125.4	-623.2	635.6	0.00	0.00	0.00
2,520.0	22.95	257.46	2,404.7	-128.8	-638.5	651.2	0.00	0.00	0.00
2,560.0	22.95	257.46	2,441.6	-132.1	-653.7	666.8	0.00	0.00	0.00
2,600.0	22.95	257.46	2,478.4	-135.5	-668.9	682.4	0.00	0.00	0.00
2,640.0	22.95	257.46	2,515.2	-138.9	-684.1	698.0	0.00	0.00	0.00
2,680.0	22.95	257.46	2,552.1	-142.3	-699.4	713.6	0.00	0.00	0.00
2,720.0	22.95	257.46	2,588.9	-145.7	-714.6	729.2	0.00	0.00	0.00
2,760.0	22.95	257.46	2,625.7	-149.1	-729.8	744.8	0.00	0.00	0.00
2,800.0	22.95	257.46	2,662.6	-152.4	-745.0	760.4	0.00	0.00	0.00
2,840.0	22.95	257.46	2,699.4	-155.8	-760.3	776.0	0.00	0.00	0.00
2,880.0	22.95	257.46	2,736.2	-159.2	-775.5	791.6	0.00	0.00	0.00
2,920.0	22.95	257.46	2,773.1	-162.6	-790.7	807.2	0.00	0.00	0.00
2,960.0	22.95	257.46	2,809.9	-166.0	-805.9	822.8	0.00	0.00	0.00
3,000.0	22.95	257.46	2,846.7	-169.4	-821.2	838.4	0.00	0.00	0.00
3,040.0	22.95	257.46	2,883.6	-172.8	-836.4	854.0	0.00	0.00	0.00
3,080.0	22.95	257.46	2,920.4	-176.1	-851.6	869.6	0.00	0.00	0.00
3,120.0	22.95	257.46	2,957.2	-179.5	-866.8	885.2	0.00	0.00	0.00
3,160.0	22.95	257.46	2,994.1	-182.9	-882.1	900.8	0.00	0.00	0.00
3,200.0	22.95	257.46	3,030.9	-186.3	-897.3	916.4	0.00	0.00	0.00
3,240.0	22.95	257.46	3,067.7	-189.7	-912.5	932.0	0.00	0.00	0.00
3,280.0	22.95	257.46	3,104.6	-193.1	-927.7	947.6	0.00	0.00	0.00
3,320.0	22.95	257.46	3,141.4	-196.5	-943.0	963.2	0.00	0.00	0.00
3,360.0	22.95	257.46	3,178.3	-199.8	-958.2	978.8	0.00	0.00	0.00
3,400.0	22.95	257.46	3,215.1	-203.2	-973.4	994.4	0.00	0.00	0.00
3,440.0	22.95	257.46	3,251.9	-206.6	-988.6	1,010.0	0.00	0.00	0.00
3,480.0	22.95	257.46	3,288.8	-210.0	-1,003.9	1,025.6	0.00	0.00	0.00
3,520.0	22.95	257.46	3,325.6	-213.4	-1,019.1	1,041.2	0.00	0.00	0.00
3,560.0	22.95	257.46	3,362.4	-216.8	-1,034.3	1,056.8	0.00	0.00	0.00
3,600.0	22.95	257.46	3,399.3	-220.2	-1,049.6	1,072.4	0.00	0.00	0.00
3,640.0	22.95	257.46	3,436.1	-223.5	-1,064.8	1,088.0	0.00	0.00	0.00
3,680.0	22.95	257.46	3,472.9	-226.9	-1,080.0	1,103.6	0.00	0.00	0.00
3,720.0	22.95	257.46	3,509.8	-230.3	-1,095.2	1,119.2	0.00	0.00	0.00
3,760.0	22.95	257.46	3,546.6	-233.7	-1,110.5	1,134.8	0.00	0.00	0.00
3,800.0	22.95	257.46	3,583.4	-237.1	-1,125.7	1,150.4	0.00	0.00	0.00
3,840.0	22.95	257.46	3,620.3	-240.5	-1,140.9	1,166.0	0.00	0.00	0.00
3,880.0	22.95	257.46	3,657.1	-243.9	-1,156.1	1,181.5	0.00	0.00	0.00
3,920.0	22.95	257.46	3,693.9	-247.2	-1,171.4	1,197.1	0.00	0.00	0.00
3,960.0	22.95	257.46	3,730.8	-250.6	-1,186.6	1,212.7	0.00	0.00	0.00
4,000.0	22.95	257.46	3,767.6	-254.0	-1,201.8	1,228.3	0.00	0.00	0.00
4,040.0	22.95	257.46	3,804.4	-257.4	-1,217.0	1,243.9	0.00	0.00	0.00
4,080.0	22.95	257.46	3,841.3	-260.8	-1,232.3	1,259.5	0.00	0.00	0.00

Database:	Landmark	Local Co-ordinate Reference:	Well SRC Aims 23-10D
Company:	Synergy Resources	TVD Reference:	WELL @ 4872.0ft (Original Well Elev)
Project:	SEC.10-T5N-R66W	MD Reference:	WELL @ 4872.0ft (Original Well Elev)
Site:	SRC Aims/GCC Pad Sec.10-T5N-R66W	North Reference:	True
Well:	SRC Aims 23-10D	Survey Calculation Method:	Minimum Curvature
Wellbore:	Wellbore #1		
Design:	Plan #2 (9-21-11)		

Planned Survey									
Measured Depth (ft)	Inclination (°)	Azimuth (°)	Vertical Depth (ft)	+N/-S (ft)	+E/-W (ft)	Vertical Section (ft)	Dogleg Rate (°/100ft)	Build Rate (°/100ft)	Turn Rate (°/100ft)
4,120.0	22.95	257.46	3,878.1	-264.2	-1,247.5	1,275.1	0.00	0.00	0.00
4,160.0	22.95	257.46	3,914.9	-267.5	-1,262.7	1,290.7	0.00	0.00	0.00
4,200.0	22.95	257.46	3,951.8	-270.9	-1,277.9	1,306.3	0.00	0.00	0.00
4,240.0	22.95	257.46	3,988.6	-274.3	-1,293.2	1,321.9	0.00	0.00	0.00
4,280.0	22.95	257.46	4,025.4	-277.7	-1,308.4	1,337.5	0.00	0.00	0.00
4,320.0	22.95	257.46	4,062.3	-281.1	-1,323.6	1,353.1	0.00	0.00	0.00
4,360.0	22.95	257.46	4,099.1	-284.5	-1,338.8	1,368.7	0.00	0.00	0.00
4,400.0	22.95	257.46	4,135.9	-287.9	-1,354.1	1,384.3	0.00	0.00	0.00
4,440.0	22.95	257.46	4,172.8	-291.2	-1,369.3	1,399.9	0.00	0.00	0.00
4,480.0	22.95	257.46	4,209.6	-294.6	-1,384.5	1,415.5	0.00	0.00	0.00
4,520.0	22.95	257.46	4,246.4	-298.0	-1,399.7	1,431.1	0.00	0.00	0.00
4,560.0	22.95	257.46	4,283.3	-301.4	-1,415.0	1,446.7	0.00	0.00	0.00
4,600.0	22.95	257.46	4,320.1	-304.8	-1,430.2	1,462.3	0.00	0.00	0.00
4,640.0	22.95	257.46	4,356.9	-308.2	-1,445.4	1,477.9	0.00	0.00	0.00
4,680.0	22.95	257.46	4,393.8	-311.6	-1,460.6	1,493.5	0.00	0.00	0.00
4,720.0	22.95	257.46	4,430.6	-314.9	-1,475.9	1,509.1	0.00	0.00	0.00
4,760.0	22.95	257.46	4,467.4	-318.3	-1,491.1	1,524.7	0.00	0.00	0.00
4,800.0	22.95	257.46	4,504.3	-321.7	-1,506.3	1,540.3	0.00	0.00	0.00
4,840.0	22.95	257.46	4,541.1	-325.1	-1,521.6	1,555.9	0.00	0.00	0.00
4,880.0	22.95	257.46	4,577.9	-328.5	-1,536.8	1,571.5	0.00	0.00	0.00
4,920.0	22.95	257.46	4,614.8	-331.9	-1,552.0	1,587.1	0.00	0.00	0.00
4,960.0	22.95	257.46	4,651.6	-335.3	-1,567.2	1,602.7	0.00	0.00	0.00
5,000.0	22.95	257.46	4,688.4	-338.6	-1,582.5	1,618.3	0.00	0.00	0.00
5,040.0	22.95	257.46	4,725.3	-342.0	-1,597.7	1,633.9	0.00	0.00	0.00
5,080.0	22.95	257.46	4,762.1	-345.4	-1,612.9	1,649.5	0.00	0.00	0.00
5,120.0	22.95	257.46	4,798.9	-348.8	-1,628.1	1,665.1	0.00	0.00	0.00
5,160.0	22.95	257.46	4,835.8	-352.2	-1,643.4	1,680.7	0.00	0.00	0.00
5,200.0	22.95	257.46	4,872.6	-355.6	-1,658.6	1,696.3	0.00	0.00	0.00
5,240.0	22.95	257.46	4,909.4	-359.0	-1,673.8	1,711.9	0.00	0.00	0.00
5,280.0	22.95	257.46	4,946.3	-362.3	-1,689.0	1,727.5	0.00	0.00	0.00
5,320.0	22.95	257.46	4,983.1	-365.7	-1,704.3	1,743.1	0.00	0.00	0.00
5,360.0	22.95	257.46	5,019.9	-369.1	-1,719.5	1,758.7	0.00	0.00	0.00
5,400.0	22.95	257.46	5,056.8	-372.5	-1,734.7	1,774.2	0.00	0.00	0.00
5,440.0	22.95	257.46	5,093.6	-375.9	-1,749.9	1,789.8	0.00	0.00	0.00
5,480.0	22.95	257.46	5,130.4	-379.3	-1,765.2	1,805.4	0.00	0.00	0.00
5,520.0	22.95	257.46	5,167.3	-382.6	-1,780.4	1,821.0	0.00	0.00	0.00
5,560.0	22.95	257.46	5,204.1	-386.0	-1,795.6	1,836.6	0.00	0.00	0.00
5,600.0	22.95	257.46	5,240.9	-389.4	-1,810.8	1,852.2	0.00	0.00	0.00
5,640.0	22.95	257.46	5,277.8	-392.8	-1,826.1	1,867.8	0.00	0.00	0.00
5,680.0	22.95	257.46	5,314.6	-396.2	-1,841.3	1,883.4	0.00	0.00	0.00
5,720.0	22.95	257.46	5,351.4	-399.6	-1,856.5	1,899.0	0.00	0.00	0.00
5,760.0	22.95	257.46	5,388.3	-403.0	-1,871.7	1,914.6	0.00	0.00	0.00
5,800.0	22.95	257.46	5,425.1	-406.3	-1,887.0	1,930.2	0.00	0.00	0.00
5,840.0	22.95	257.46	5,461.9	-409.7	-1,902.2	1,945.8	0.00	0.00	0.00
5,880.0	22.95	257.46	5,498.8	-413.1	-1,917.4	1,961.4	0.00	0.00	0.00
5,920.0	22.95	257.46	5,535.6	-416.5	-1,932.6	1,977.0	0.00	0.00	0.00
5,960.0	22.95	257.46	5,572.4	-419.9	-1,947.9	1,992.6	0.00	0.00	0.00
5,968.6	22.95	257.46	5,580.4	-420.6	-1,951.2	1,996.0	0.00	0.00	0.00
6,000.0	22.32	257.46	5,609.3	-423.2	-1,962.9	2,008.1	2.00	-2.00	0.00
6,040.0	21.52	257.46	5,646.4	-426.5	-1,977.5	2,023.0	2.00	-2.00	0.00
6,080.0	20.72	257.46	5,683.8	-429.6	-1,991.6	2,037.4	2.00	-2.00	0.00
6,120.0	19.92	257.46	5,721.3	-432.6	-2,005.2	2,051.3	2.00	-2.00	0.00
6,160.0	19.12	257.46	5,759.0	-435.5	-2,018.2	2,064.7	2.00	-2.00	0.00
6,200.0	18.32	257.46	5,796.8	-438.3	-2,030.7	2,077.5	2.00	-2.00	0.00

Database:	Landmark	Local Co-ordinate Reference:	Well SRC Aims 23-10D
Company:	Synergy Resources	TVD Reference:	WELL @ 4872.0ft (Original Well Elev)
Project:	SEC.10-T5N-R66W	MD Reference:	WELL @ 4872.0ft (Original Well Elev)
Site:	SRC Aims/GCC Pad Sec.10-T5N-R66W	North Reference:	True
Well:	SRC Aims 23-10D	Survey Calculation Method:	Minimum Curvature
Wellbore:	Wellbore #1		
Design:	Plan #2 (9-21-11)		

Planned Survey									
Measured Depth (ft)	Inclination (°)	Azimuth (°)	Vertical Depth (ft)	+N/-S (ft)	+E/-W (ft)	Vertical Section (ft)	Dogleg Rate (°/100ft)	Build Rate (°/100ft)	Turn Rate (°/100ft)
6,240.0	17.52	257.46	5,834.9	-441.0	-2,042.8	2,089.8	2.00	-2.00	0.00
6,280.0	16.72	257.46	5,873.1	-443.5	-2,054.2	2,101.6	2.00	-2.00	0.00
6,320.0	15.92	257.46	5,911.5	-446.0	-2,065.2	2,112.8	2.00	-2.00	0.00
6,360.0	15.12	257.46	5,950.1	-448.3	-2,075.7	2,123.5	2.00	-2.00	0.00
6,400.0	14.32	257.46	5,988.7	-450.5	-2,085.6	2,133.7	2.00	-2.00	0.00
6,440.0	13.52	257.46	6,027.6	-452.6	-2,095.0	2,143.3	2.00	-2.00	0.00
6,480.0	12.72	257.46	6,066.5	-454.6	-2,103.9	2,152.4	2.00	-2.00	0.00
6,520.0	11.92	257.46	6,105.6	-456.4	-2,112.2	2,160.9	2.00	-2.00	0.00
6,560.0	11.12	257.46	6,144.8	-458.2	-2,120.0	2,168.9	2.00	-2.00	0.00
6,600.0	10.32	257.46	6,184.1	-459.8	-2,127.3	2,176.4	2.00	-2.00	0.00
6,616.2	10.00	257.46	6,200.0	-460.4	-2,130.0	2,179.2	2.00	-2.00	0.00
DRILL TARGET 2026'FSL, 2272'FWL									
6,640.0	10.00	257.46	6,223.5	-461.3	-2,134.1	2,183.4	0.00	0.00	0.00
6,680.0	10.00	257.46	6,262.9	-462.8	-2,140.9	2,190.3	0.00	0.00	0.00
6,720.0	10.00	257.46	6,302.3	-464.3	-2,147.6	2,197.3	0.00	0.00	0.00
6,760.0	10.00	257.46	6,341.7	-465.8	-2,154.4	2,204.2	0.00	0.00	0.00
6,768.7	10.00	257.46	6,350.2	-466.1	-2,155.9	2,205.7	0.00	0.00	0.00
BHL 1958'FSL, 1968'FWL									
6,800.0	10.00	257.46	6,381.1	-467.3	-2,161.2	2,211.1	0.00	0.00	0.00
6,840.0	10.00	257.46	6,420.4	-468.8	-2,168.0	2,218.1	0.00	0.00	0.00
6,880.0	10.00	257.46	6,459.8	-470.3	-2,174.8	2,225.0	0.00	0.00	0.00
6,920.0	10.00	257.46	6,499.2	-471.9	-2,181.5	2,232.0	0.00	0.00	0.00
6,960.0	10.00	257.46	6,538.6	-473.4	-2,188.3	2,238.9	0.00	0.00	0.00
7,000.0	10.00	257.46	6,578.0	-474.9	-2,195.1	2,245.9	0.00	0.00	0.00
7,040.0	10.00	257.46	6,617.4	-476.4	-2,201.9	2,252.8	0.00	0.00	0.00
7,080.0	10.00	257.46	6,656.8	-477.9	-2,208.7	2,259.8	0.00	0.00	0.00
7,120.0	10.00	257.46	6,696.2	-479.4	-2,215.4	2,266.7	0.00	0.00	0.00
7,160.0	10.00	257.46	6,735.6	-480.9	-2,222.2	2,273.7	0.00	0.00	0.00
7,162.6	10.00	257.46	6,738.2	-481.0	-2,222.7	2,274.1	0.00	0.00	0.00
LEGAL BOX 400' X 400' 1958'FSL, 1968'FWL									
7,200.0	10.00	257.46	6,775.0	-482.4	-2,229.0	2,280.6	0.00	0.00	0.00
7,240.0	10.00	257.46	6,814.4	-483.9	-2,235.8	2,287.6	0.00	0.00	0.00
7,280.0	10.00	257.46	6,853.8	-485.4	-2,242.6	2,294.5	0.00	0.00	0.00
7,320.0	10.00	257.46	6,893.2	-486.9	-2,249.3	2,301.4	0.00	0.00	0.00
7,360.0	10.00	257.46	6,932.5	-488.4	-2,256.1	2,308.4	0.00	0.00	0.00
7,400.0	10.00	257.46	6,971.9	-489.9	-2,262.9	2,315.3	0.00	0.00	0.00
7,403.1	10.00	257.46	6,975.0	-490.1	-2,263.4	2,315.9	0.00	0.00	0.00
NIORARA									
7,440.0	10.00	257.46	7,011.3	-491.5	-2,269.7	2,322.3	0.00	0.00	0.00
7,480.0	10.00	257.46	7,050.7	-493.0	-2,276.5	2,329.2	0.00	0.00	0.00
7,520.0	10.00	257.46	7,090.1	-494.5	-2,283.2	2,336.2	0.00	0.00	0.00
7,560.0	10.00	257.46	7,129.5	-496.0	-2,290.0	2,343.1	0.00	0.00	0.00
7,600.0	10.00	257.46	7,168.9	-497.5	-2,296.8	2,350.1	0.00	0.00	0.00
7,640.0	10.00	257.46	7,208.3	-499.0	-2,303.6	2,357.0	0.00	0.00	0.00
7,680.0	10.00	257.46	7,247.7	-500.5	-2,310.4	2,364.0	0.00	0.00	0.00
7,720.0	10.00	257.46	7,287.1	-502.0	-2,317.1	2,370.9	0.00	0.00	0.00
7,760.0	10.00	257.46	7,326.5	-503.5	-2,323.9	2,377.8	0.00	0.00	0.00
7,800.0	10.00	257.46	7,365.9	-505.0	-2,330.7	2,384.8	0.00	0.00	0.00
7,840.0	10.00	257.46	7,405.3	-506.5	-2,337.5	2,391.7	0.00	0.00	0.00
7,880.0	10.00	257.46	7,444.6	-508.0	-2,344.3	2,398.7	0.00	0.00	0.00
7,920.0	10.00	257.46	7,484.0	-509.6	-2,351.0	2,405.6	0.00	0.00	0.00
7,960.0	10.00	257.46	7,523.4	-511.1	-2,357.8	2,412.6	0.00	0.00	0.00
8,000.0	10.00	257.46	7,562.8	-512.6	-2,364.6	2,419.5	0.00	0.00	0.00

Database:	Landmark	Local Co-ordinate Reference:	Well SRC Aims 23-10D
Company:	Synergy Resources	TVD Reference:	WELL @ 4872.0ft (Original Well Elev)
Project:	SEC.10-T5N-R66W	MD Reference:	WELL @ 4872.0ft (Original Well Elev)
Site:	SRC Aims/GCC Pad Sec.10-T5N-R66W	North Reference:	True
Well:	SRC Aims 23-10D	Survey Calculation Method:	Minimum Curvature
Wellbore:	Wellbore #1		
Design:	Plan #2 (9-21-11)		

Planned Survey										
Measured Depth (ft)	Inclination (°)	Azimuth (°)	Vertical Depth (ft)	+N/-S (ft)	+E/-W (ft)	Vertical Section (ft)	Dogleg Rate (°/100ft)	Build Rate (°/100ft)	Turn Rate (°/100ft)	
8,040.0	10.00	257.46	7,602.2	-514.1	-2,371.4	2,426.5	0.00	0.00	0.00	
8,080.0	10.00	257.46	7,641.6	-515.6	-2,378.2	2,433.4	0.00	0.00	0.00	
8,120.0	10.00	257.46	7,681.0	-517.1	-2,384.9	2,440.4	0.00	0.00	0.00	
8,160.0	10.00	257.46	7,720.4	-518.6	-2,391.7	2,447.3	0.00	0.00	0.00	
8,200.0	10.00	257.46	7,759.8	-520.1	-2,398.5	2,454.3	0.00	0.00	0.00	
8,240.0	10.00	257.46	7,799.2	-521.6	-2,405.3	2,461.2	0.00	0.00	0.00	
8,280.0	10.00	257.46	7,838.6	-523.1	-2,412.1	2,468.1	0.00	0.00	0.00	
8,320.0	10.00	257.46	7,878.0	-524.6	-2,418.8	2,475.1	0.00	0.00	0.00	
8,360.0	10.00	257.46	7,917.4	-526.1	-2,425.6	2,482.0	0.00	0.00	0.00	
8,400.0	10.00	257.46	7,956.7	-527.7	-2,432.4	2,489.0	0.00	0.00	0.00	
8,408.4	10.00	257.46	7,965.0	-528.0	-2,433.8	2,490.4	0.00	0.00	0.00	

Targets										
Target Name										
- hit/miss target	Dip Angle (°)	Dip Dir. (°)	TVD (ft)	+N/-S (ft)	+E/-W (ft)	Northing (ft)	Easting (ft)	Latitude	Longitude	
- Shape										
LEGAL BOX 400' X 400'	0.00	0.00	6,700.0	-528.2	-2,433.9	340,708.51	4,105,047.19	40.412270	-104.768120	
- plan misses target center by 219.7ft at 7162.6ft MD (6738.2 TVD, -481.0 N, -2222.7 E)										
- Rectangle (sides W400.0 H400.0 D1,265.0)										
BHL 1958'FSL, 1968'F	0.00	0.00	6,300.0	-528.2	-2,433.9	340,708.51	4,105,047.16	40.412270	-104.768120	
- plan misses target center by 289.2ft at 6768.7ft MD (6350.2 TVD, -466.1 N, -2155.9 E)										
- Point										
DRILL TARGET 2026	0.00	0.00	6,200.0	-460.4	-2,130.0	340,794.69	4,105,347.10	40.412456	-104.767029	
- plan hits target center										
- Point										

Casing Points					
Measured Depth (ft)	Vertical Depth (ft)	Name	Casing Diameter (")	Hole Diameter (")	
701.7	700.0	8 5/8"	8-5/8	12-1/4	

Formations					
Measured Depth (ft)	Vertical Depth (ft)	Name	Lithology	Dip (°)	Dip Direction (°)
7,403.1	6,975.0	NIOBRARA		0.00	



Directional

Synergy Resources

SEC.10-T5N-R66W

SRC Aims/GCC Pad Sec.10-T5N-R66W

SRC Aims 23-10D

Wellbore #1

Plan #2 (9-21-11)

Anticollision Report

05 October, 2011

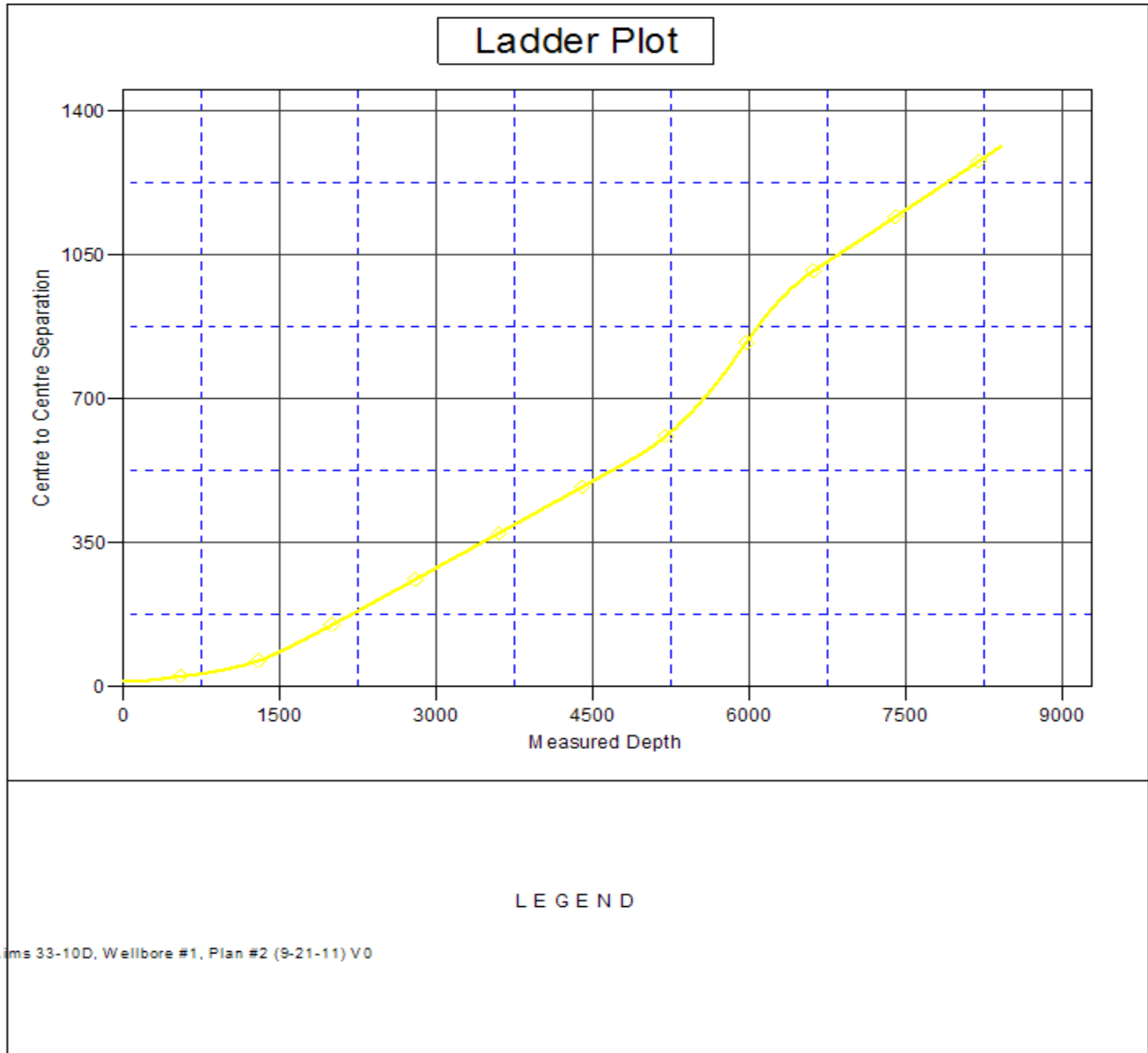
SRC Aims/GCC Pad Sec.10-T5N-R66W - SRC Aims 33-10D - Wellbore #1 - Plan #2 (9-21-11)													Offset Site Error:	0.0 ft
Survey Program: 0-MWD													Offset Well Error:	0.0 ft
Reference		Offset		Semi Major Axis			Distance							
Measured Depth (ft)	Vertical Depth (ft)	Measured Depth (ft)	Vertical Depth (ft)	Reference (ft)	Offset (ft)	Highside Toolface (°)	Offset Wellbore Centre +N/-S (ft)	+E/-W (ft)	Between Centres (ft)	Between Ellipses (ft)	Minimum Separation (ft)	Separation Factor	Warning	
2,200.0	2,110.1	2,193.8	2,142.3	11.7	9.4	-142.74	-175.8	-357.9	178.1	161.8	16.39	10.871		
2,300.0	2,202.2	2,292.8	2,237.5	12.6	9.9	-143.77	-186.9	-382.4	191.9	174.7	17.25	11.125		
2,400.0	2,294.2	2,391.8	2,332.8	13.4	10.5	-144.66	-198.0	-406.9	205.8	187.7	18.12	11.357		
2,500.0	2,386.3	2,490.8	2,428.1	14.2	11.1	-145.44	-209.1	-431.4	219.7	200.7	18.99	11.569		
2,600.0	2,478.4	2,589.7	2,523.3	15.1	11.7	-146.13	-220.2	-455.9	233.6	213.7	19.86	11.764		
2,700.0	2,570.5	2,688.7	2,618.6	15.9	12.2	-146.74	-231.3	-480.4	247.5	226.8	20.72	11.944		
2,800.0	2,662.6	2,787.7	2,713.9	16.7	12.8	-147.28	-242.4	-504.9	261.5	239.9	21.59	12.110		
2,900.0	2,754.7	2,886.7	2,809.1	17.6	13.4	-147.77	-253.5	-529.4	275.5	253.0	22.46	12.264		
3,000.0	2,846.7	2,985.7	2,904.4	18.4	14.0	-148.21	-264.6	-553.9	289.5	266.2	23.34	12.406		
3,100.0	2,938.8	3,084.7	2,999.6	19.3	14.6	-148.61	-275.7	-578.4	303.5	279.3	24.21	12.539		
3,200.0	3,030.9	3,183.7	3,094.9	20.1	15.1	-148.98	-286.8	-602.9	317.6	292.5	25.08	12.662		
3,300.0	3,123.0	3,282.7	3,190.2	20.9	15.7	-149.31	-298.0	-627.4	331.6	305.7	25.95	12.778		
3,400.0	3,215.1	3,381.7	3,285.4	21.8	16.3	-149.62	-309.1	-651.9	345.7	318.9	26.83	12.886		
3,500.0	3,307.2	3,480.7	3,380.7	22.6	16.9	-149.91	-320.2	-676.4	359.8	332.1	27.70	12.988		
3,600.0	3,399.3	3,579.6	3,476.0	23.5	17.4	-150.17	-331.3	-700.9	373.8	345.3	28.58	13.083		
3,700.0	3,491.3	3,678.6	3,571.2	24.3	18.0	-150.41	-342.4	-725.4	387.9	358.5	29.45	13.173		
3,800.0	3,583.4	3,777.6	3,666.5	25.1	18.6	-150.64	-353.5	-749.9	402.0	371.7	30.32	13.257		
3,900.0	3,675.5	3,876.6	3,761.8	26.0	19.2	-150.85	-364.6	-774.4	416.1	384.9	31.20	13.337		
4,000.0	3,767.6	3,975.6	3,857.0	26.8	19.8	-151.04	-375.7	-799.0	430.2	398.2	32.08	13.413		
4,100.0	3,859.7	4,074.6	3,952.3	27.7	20.3	-151.23	-386.8	-823.5	444.3	411.4	32.95	13.484		
4,200.0	3,951.8	4,173.6	4,047.6	28.5	20.9	-151.40	-397.9	-848.0	458.4	424.6	33.83	13.552		
4,300.0	4,043.8	4,272.6	4,142.8	29.3	21.5	-151.56	-409.0	-872.5	472.6	437.9	34.70	13.617		
4,400.0	4,135.9	4,371.6	4,238.1	30.2	22.1	-151.72	-420.1	-897.0	486.7	451.1	35.58	13.678		
4,500.0	4,228.0	4,470.6	4,333.3	31.0	22.7	-151.86	-431.2	-921.5	500.8	464.4	36.46	13.737		
4,600.0	4,320.1	4,569.5	4,428.6	31.9	23.2	-152.00	-442.3	-946.0	514.9	477.6	37.34	13.792		
4,700.0	4,412.2	4,668.5	4,523.9	32.7	23.8	-152.13	-453.4	-970.5	529.1	490.9	38.21	13.845		
4,800.0	4,504.3	4,767.5	4,619.1	33.6	24.4	-152.25	-464.5	-995.0	543.2	504.1	39.09	13.896		
4,900.0	4,596.3	4,866.5	4,714.4	34.4	25.0	-152.37	-475.6	-1,019.5	557.3	517.4	39.97	13.945		
5,000.0	4,688.4	4,953.1	4,798.1	35.2	25.4	-152.53	-484.9	-1,040.0	572.5	531.8	40.68	14.073		
5,100.0	4,780.5	5,038.0	4,880.7	36.1	25.7	-152.84	-493.0	-1,057.8	589.9	548.6	41.26	14.298		
5,200.0	4,872.6	5,122.1	4,963.0	36.9	26.0	-153.28	-500.0	-1,073.2	609.6	567.9	41.74	14.605		
5,300.0	4,964.7	5,200.0	5,039.7	37.8	26.2	-153.79	-505.6	-1,085.6	631.7	589.6	42.14	14.990		
5,400.0	5,056.8	5,287.0	5,125.8	38.6	26.4	-154.47	-510.8	-1,097.1	656.0	613.6	42.44	15.458		
5,500.0	5,148.8	5,367.6	5,205.9	39.4	26.6	-155.17	-514.7	-1,105.7	682.7	640.0	42.68	15.998		
5,600.0	5,240.9	5,447.0	5,284.9	40.3	26.8	-155.93	-517.6	-1,112.1	711.7	668.9	42.85	16.608		
5,700.0	5,333.0	5,524.9	5,362.6	41.1	26.9	-156.72	-519.6	-1,116.5	743.0	700.1	42.98	17.286		
5,800.0	5,425.1	5,600.0	5,437.7	42.0	27.0	-157.52	-520.7	-1,118.9	776.6	733.6	43.08	18.026		
5,900.0	5,517.2	5,679.5	5,517.2	42.8	27.0	-158.39	-521.0	-1,119.5	812.5	769.4	43.13	18.837		
5,968.6	5,580.4	5,742.7	5,580.4	43.4	27.1	-159.06	-521.0	-1,119.5	837.7	794.5	43.13	19.423		
6,000.0	5,609.3	5,771.6	5,609.3	43.6	27.1	-159.43	-521.0	-1,119.5	849.1	806.0	43.10	19.699		
6,100.0	5,702.5	5,864.8	5,702.5	44.2	27.2	-160.50	-521.0	-1,119.5	883.5	840.5	43.03	20.534		
6,200.0	5,796.8	5,959.2	5,796.8	44.8	27.3	-161.40	-521.0	-1,119.5	915.0	872.0	43.00	21.276		
6,300.0	5,892.3	6,054.6	5,892.3	45.3	27.4	-162.16	-521.0	-1,119.5	943.4	900.4	43.02	21.931		
6,400.0	5,988.7	6,151.1	5,988.7	45.7	27.5	-162.79	-521.0	-1,119.5	968.7	925.6	43.05	22.502		
6,500.0	6,086.1	6,248.4	6,086.1	46.1	27.6	-163.31	-521.0	-1,119.5	990.7	947.7	43.09	22.993		
6,600.0	6,184.1	6,346.4	6,184.1	46.5	27.7	-163.74	-521.0	-1,119.5	1,009.6	966.5	43.13	23.406		
6,616.2	6,200.0	6,362.3	6,200.0	46.5	27.7	-163.80	-521.0	-1,119.5	1,012.3	969.2	43.14	23.466		
6,700.0	6,282.6	6,444.9	6,282.6	46.8	27.8	-164.02	-521.0	-1,119.5	1,026.4	983.0	43.32	23.690		
6,800.0	6,381.1	6,543.4	6,381.1	47.2	27.9	-164.29	-521.0	-1,119.5	1,043.1	999.5	43.57	23.939		
6,900.0	6,479.5	6,641.8	6,479.5	47.6	28.0	-164.54	-521.0	-1,119.5	1,059.8	1,016.0	43.83	24.182		
7,000.0	6,578.0	6,740.3	6,578.0	48.0	28.1	-164.79	-521.0	-1,119.5	1,076.6	1,032.5	44.09	24.418		
7,100.0	6,676.5	6,838.8	6,676.5	48.3	28.2	-165.02	-521.0	-1,119.5	1,093.4	1,049.0	44.36	24.648		

Company:	Synergy Resources	Local Co-ordinate Reference:	Well SRC Aims 23-10D
Project:	SEC.10-T5N-R66W	TVD Reference:	WELL @ 4872.0ft (Original Well Elev)
Reference Site:	SRC Aims/GCC Pad Sec.10-T5N-R66W	MD Reference:	WELL @ 4872.0ft (Original Well Elev)
Site Error:	0.0ft	North Reference:	True
Reference Well:	SRC Aims 23-10D	Survey Calculation Method:	Minimum Curvature
Well Error:	0.0ft	Output errors are at	2.00 sigma
Reference Wellbore	Wellbore #1	Database:	Landmark
Reference Design:	Plan #2 (9-21-11)	Offset TVD Reference:	Offset Datum

Offset Design												Offset Site Error:	0.0 ft
SRC Aims/GCC Pad Sec.10-T5N-R66W - SRC Aims 33-10D - Wellbore #1 - Plan #2 (9-21-11)												Offset Well Error:	0.0 ft
Survey Program: 0-MWD													
Reference		Offset		Semi Major Axis			Distance						
Measured Depth (ft)	Vertical Depth (ft)	Measured Depth (ft)	Vertical Depth (ft)	Reference (ft)	Offset (ft)	Highside Toolface (°)	Offset Wellbore Centre +N/-S (ft)	+E/-W (ft)	Between Centres (ft)	Between Ellipses (ft)	Minimum Separation (ft)	Separation Factor	Warning
7,200.0	6,775.0	6,937.3	6,775.0	48.7	28.3	-165.26	-521.0	-1,119.5	1,110.2	1,065.5	44.63	24.873	
7,300.0	6,873.5	7,035.8	6,873.5	49.1	28.4	-165.48	-521.0	-1,119.5	1,127.0	1,082.1	44.92	25.091	
7,400.0	6,971.9	7,134.2	6,971.9	49.5	28.5	-165.70	-521.0	-1,119.5	1,143.8	1,098.6	45.20	25.304	
7,500.0	7,070.4	7,232.7	7,070.4	49.9	28.6	-165.91	-521.0	-1,119.5	1,160.7	1,115.2	45.50	25.511	
7,600.0	7,168.9	7,331.2	7,168.9	50.3	28.7	-166.12	-521.0	-1,119.5	1,177.5	1,131.7	45.80	25.712	
7,700.0	7,267.4	7,429.7	7,267.4	50.6	28.8	-166.32	-521.0	-1,119.5	1,194.4	1,148.3	46.10	25.909	
7,800.0	7,365.9	7,528.2	7,365.9	51.0	28.9	-166.51	-521.0	-1,119.5	1,211.3	1,164.9	46.41	26.100	
7,900.0	7,464.3	7,626.6	7,464.3	51.4	29.1	-166.70	-521.0	-1,119.5	1,228.2	1,181.5	46.72	26.286	
8,000.0	7,562.8	7,725.1	7,562.8	51.8	29.2	-166.88	-521.0	-1,119.5	1,245.1	1,198.1	47.04	26.468	
8,100.0	7,661.3	7,823.6	7,661.3	52.2	29.3	-167.06	-521.0	-1,119.5	1,262.1	1,214.7	47.37	26.644	
8,200.0	7,759.8	7,922.1	7,759.8	52.6	29.4	-167.23	-521.0	-1,119.5	1,279.0	1,231.3	47.69	26.816	
8,300.0	7,858.3	8,020.6	7,858.3	53.0	29.5	-167.40	-521.0	-1,119.5	1,296.0	1,247.9	48.03	26.984	
8,408.4	7,965.0	8,127.3	7,965.0	53.4	29.6	-167.58	-521.0	-1,119.5	1,314.3	1,266.0	48.39	27.161	

Company:	Synergy Resources	Local Co-ordinate Reference:	Well SRC Aims 23-10D
Project:	SEC.10-T5N-R66W	TVD Reference:	WELL @ 4872.0ft (Original Well Elev)
Reference Site:	SRC Aims/GCC Pad Sec.10-T5N-R66W	MD Reference:	WELL @ 4872.0ft (Original Well Elev)
Site Error:	0.0ft	North Reference:	True
Reference Well:	SRC Aims 23-10D	Survey Calculation Method:	Minimum Curvature
Well Error:	0.0ft	Output errors are at	2.00 sigma
Reference Wellbore	Wellbore #1	Database:	Landmark
Reference Design:	Plan #2 (9-21-11)	Offset TVD Reference:	Offset Datum

Reference Depths are relative to WELL @ 4872.0ft (Original Well Elev) Coordinates are relative to: SRC Aims 23-10D
 Offset Depths are relative to Offset Datum Coordinate System is US State Plane 1983, Wyoming Western Zone
 Central Meridian is -110.083333 ° Grid Convergence at Surface is: 3.46°



Company:	Synergy Resources	Local Co-ordinate Reference:	Well SRC Aims 23-10D
Project:	SEC.10-T5N-R66W	TVD Reference:	WELL @ 4872.0ft (Original Well Elev)
Reference Site:	SRC Aims/GCC Pad Sec.10-T5N-R66W	MD Reference:	WELL @ 4872.0ft (Original Well Elev)
Site Error:	0.0ft	North Reference:	True
Reference Well:	SRC Aims 23-10D	Survey Calculation Method:	Minimum Curvature
Well Error:	0.0ft	Output errors are at	2.00 sigma
Reference Wellbore	Wellbore #1	Database:	Landmark
Reference Design:	Plan #2 (9-21-11)	Offset TVD Reference:	Offset Datum

Reference Depths are relative to WELL @ 4872.0ft (Original Well Elev) Coordinates are relative to: SRC Aims 23-10D
Offset Depths are relative to Offset Datum Coordinate System is US State Plane 1983, Wyoming Western Zone
Central Meridian is -110.083333 ° Grid Convergence at Surface is: 3.46°

