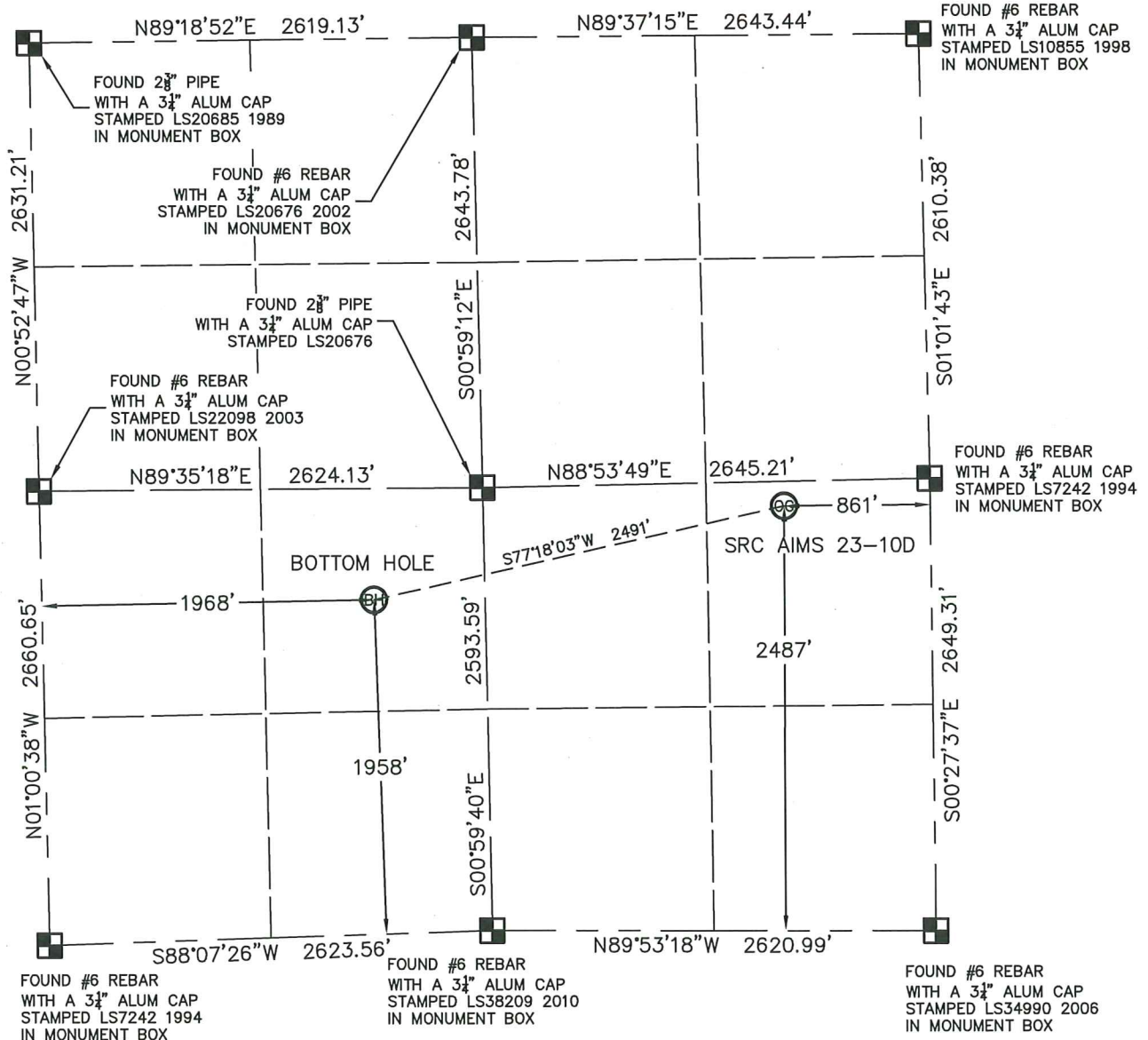


WELL LOCATION CERTIFICATE

SRC AIMS 23-10D

THIS MAP DOES NOT REPRESENT A BOUNDARY SURVEY

SECTION: 10
TOWNSHIP: 5N
RANGE: 66WIn accordance with a request from CRAIG RASMUSON with SYNERGY RESOURCES CORPORATIONKing Surveyors Inc. has determined the surface location of SRC AIMS 23-10D to be 2487' from the SOUTH line and 861' from the EAST line and the bottom hole to be 1958' from the SOUTH line and 1968' from the WEST line, as measured at right angles, from the section lines of Section 10, Township 5 North, Range 66 West of the Sixth Principal Meridian, County of Weld, State of Colorado.I hereby state that this Well Location Certificate was prepared by me, or under my direct supervision, that the fieldwork was completed on 9-14-2011, for and on behalf of SYNERGY RESOURCES CORPORATION. That this is not a Land Survey Plat or an Improvement Survey Plat, and that it is not to be relied upon for establishment of fence, building, or other future improvement lines.

NOTE:

- 1) Bearings shown are Grid Bearings of the Colorado State Plane Coordinate System, North Zone, North American Datum 1983/2007. The lineal dimensions as contained herein are based upon the "U.S. Survey Foot."
- 2) Ground elevations are based on an observed GPS elevation (NAVD 1988 DATUM).
- 3) NEAREST EXISTING WELL: NO EXISTING WELLS IN THIS SECTION
- 4) IMPROVEMENTS: See LOCATION DRAWING exhibit for all visible improvements within 400' of disturbed area.
- 5) SURFACE USE: OPEN FIELD
- 6) FIELD OPERATOR: CHAD DILKA

SURFACE LOCATION
LATITUDE: 40.41372°N
LONGITUDE: 104.75938°W
PDOP: 3.6
ELEV: 4859'
1/4, 1/4: NE 1/4 SE 1/4
NEAREST PROPERTY LINE: 144' NORTH

BOTTOM HOLE
LATITUDE: 40.41227°N
LONGITUDE: 104.76812°W

NOTE

According to Colorado law, you must commence any legal action based upon any defect in this W.L.C. within three years after you discover such defect. In no event, may any action based upon any defect in this survey be commenced more than ten years after the date of the certificate shown hereon. (13-80-105 C.R.S.)

LEGEND

- = FOUND ALIQUOT MONUMENT AS DESCRIBED
- = CALCULATED POSITION
- = SET ALIQUOT MONUMENT AS DESCRIBED

Michael Chad Dilka - On Behalf Of King Surveyors, Inc.
Colorado Licensed Professional Land Surveyor #38106

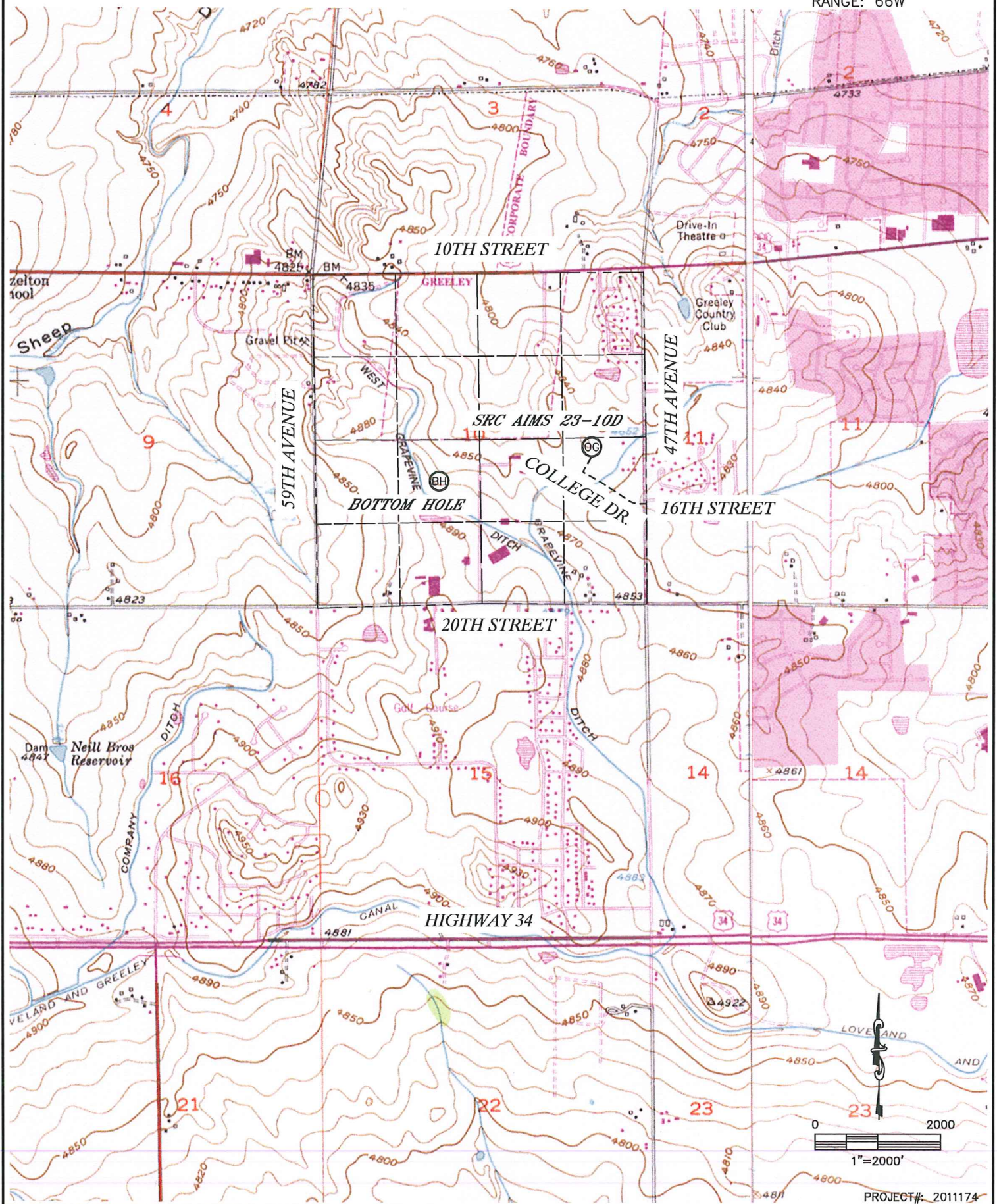
PROJECT#: 2011174

KING SURVEYORS, INC. 650 E. GARDEN DR. WINDSOR, CO 80550

ACCESS ROAD MAP

SRC AIMS 23-10D

SECTION: 10
TOWNSHIP: 5N
RANGE: 66W

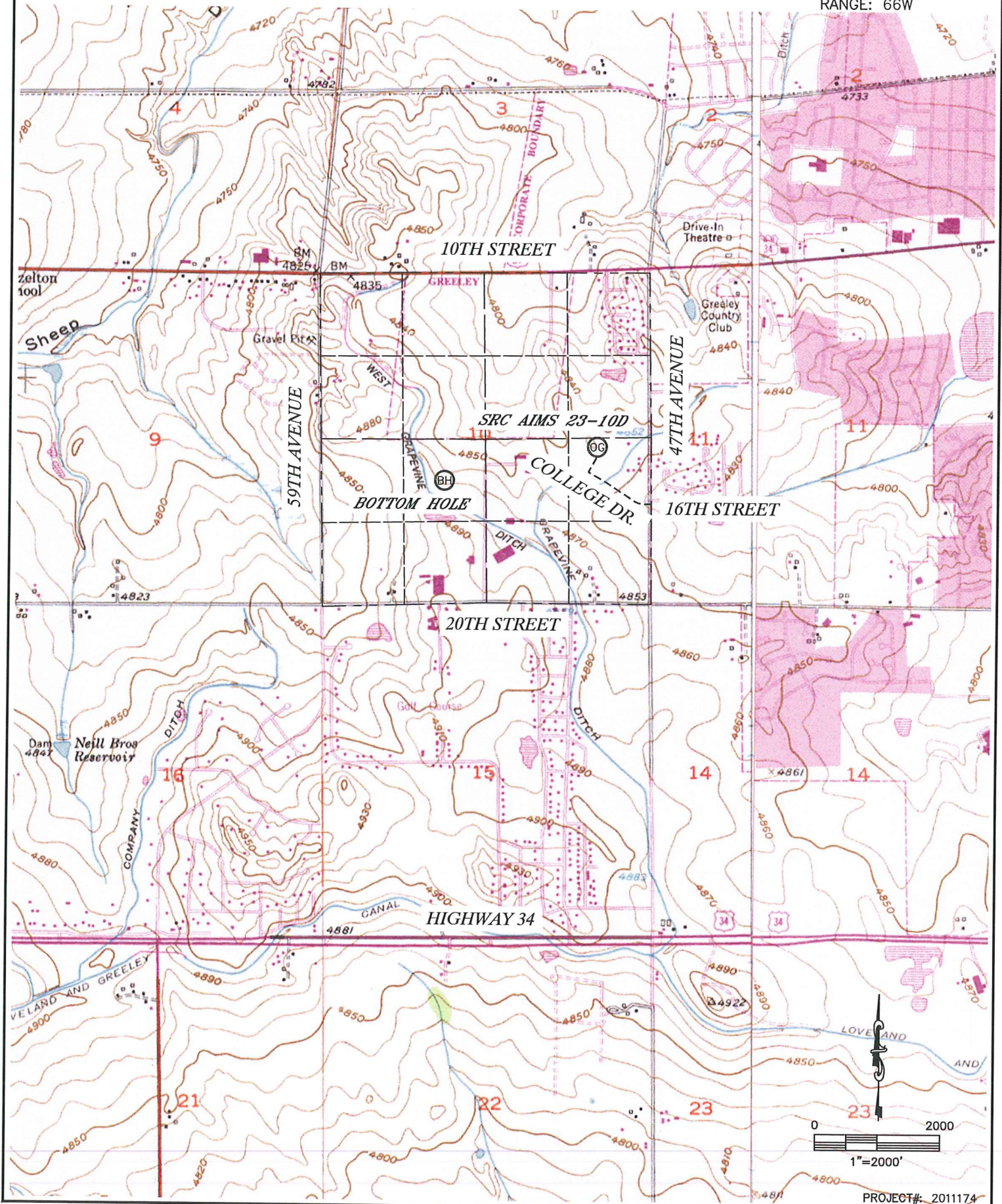


KING SURVEYORS, INC. 650 E. GARDEN DR. WINDSOR, CO 80550

TOPOGRAPHIC MAP

SRC AIMS 23-10D

SECTION: 10
TOWNSHIP: 5N
RANGE: 66W



PROJECT#: 2011174

LOCATION DRAWING

SRC AIMS 23-10D

SECTION: 10
TOWNSHIP: 5N
RANGE: 66W



- (A) PROPERTY LINE 144'N, 395'E, 524'SE
- (B) OVERHEAD UTILITY LINE 133'N, 394'E
- (C) FENCE 146'N, 396'E, 483'SW, 483'NW
- (D) WATERLINE 3'NW, 104'NW, 207'SW, 224'SW
- (E) BLOWOFF 207'SW, 228'SW, 240'SW, 531'SE
- (F) WATER MANHOLE 248'SW, 322'SW
- (G) WATER VALVE 316'SW, 351'SW, 528'SE
- (H) ANTENNA 239'SW
- (I) ELECTRIC METER 242'SW
- (J) IRRIGATION CONTROL BOX 437'SW
- (K) BOLLARD 404'SW, 551'S
- (L) AIMS SIGN 472'SW
- (M) LIGHT POLE 391'SW
- (N) NE EDGE ASPHALT ROAD 396'SW
- (O) E EDGE FIELD ROAD 316'W

- (P) N EDGE DITCH ROAD 473'S
- (Q) NW EDGE IRRIGATION DITCH 480'SE, 469'S
- (R) CONCRETE IRRIGATION STRUCTURE 421'SW, 496'S
- (S) HOUSE 541'NW, 590'NW, 494'E, 665'E, 725'SE, 725'SE, 642'SE
- (T) GARAGE 690'SE
- (U) BARN/SHED 413'E, 566'SE, 685'SE, 718'SE, 647'SE, 563'NW
- (V) PUTTING GREEN 217'N, 335'NW
- (W) SAND TRAP 296'N, 304'NW, 421'NW
- (X) SW SIDE WATER HAZARD 494'NE
- (Y) TEE BOX 460'NE, 464'NW, 491'NW
- (Z) CART PATH 370'NE, 445'NW, 421'NW, 514'NW
- (AA) S EDGE FAIRWAY 188'N, 286'NW
- (BB) TELEPHONE PEDESTAL 487'NW, 794'NE
- (CC) WATER METER 514'SE, 544'SE
- (DD) CONCRETE MANHOLE 453' NE

NEAREST:
BUILDING=413' E
PUBLIC ROAD=396' SW
ABOVE GND UTILITY=133' N
RAILROAD=5280'+
PROPERTY LINE= 144' N

SRC AIMS 23-10D

Topographic map of a section of Greeley, Colorado, showing a 1000-foot radius circle centered on a point. The map includes contour lines, roads, and various landmarks. Labels include:

- Greeley
- Drive-In Theatre
- Greeley Country Club
- SIDE WATER HAZARD 1072'
- SW SIDE WATER HAZARD 494'
- NW EDGE DIRT IRRIGATION DITCH 480'
- N EDGE DIRT IRRIGATION DITCH 469'
- NE EDGE DIRT DRAINAGE DITCH 914'
- POND OUTLET PIPE 1036'
- CONCRETE IRRIGATION STRUCTURE 421'
- NE EDGE DRAINAGE SWALE 817'
- SRC AIMS 23-10D
- 1000' RADIUS
- Greeley
- Drive-In Theatre
- Greeley Country Club
- SIDE WATER HAZARD 1072'
- SW SIDE WATER HAZARD 494'
- NW EDGE DIRT IRRIGATION DITCH 480'
- N EDGE DIRT IRRIGATION DITCH 469'
- NE EDGE DIRT DRAINAGE DITCH 914'
- POND OUTLET PIPE 1036'
- CONCRETE IRRIGATION STRUCTURE 421'
- NE EDGE DRAINAGE SWALE 817'
- SRC AIMS 23-10D
- 1000' RADIUS

PROJECT#: 2011174

SRC AIMS 23-10D
TOWNSHIP 5 NORTH, RANGE 66 WEST
SECTION 10: NE1/4SE1/4
WELD COUNTY, COLORADO

WELL FACING NORTH
PICTURE DATED: 9/14/2011



WELL FACING SOUTH
PICTURE DATED: 9/14/2011



SRC AIMS 23-10D
TOWNSHIP 5 NORTH, RANGE 66 WEST
SECTION 10: NE1/4SE1/4
WELD COUNTY, COLORADO

WELL FACING EAST
PICTURE DATED: 9/14/2011



WELL FACING WEST
PICTURE DATED: 9/14/2011



SRC AIMS 23-10D
TOWNSHIP 5 NORTH, RANGE 66 WEST
SECTION 10: NE1/4SE1/4
WELD COUNTY, COLORADO

REFERENCE AREA FACING WEST
PICTURE DATED: 9/14/2011

