

ENSIGN

Directional

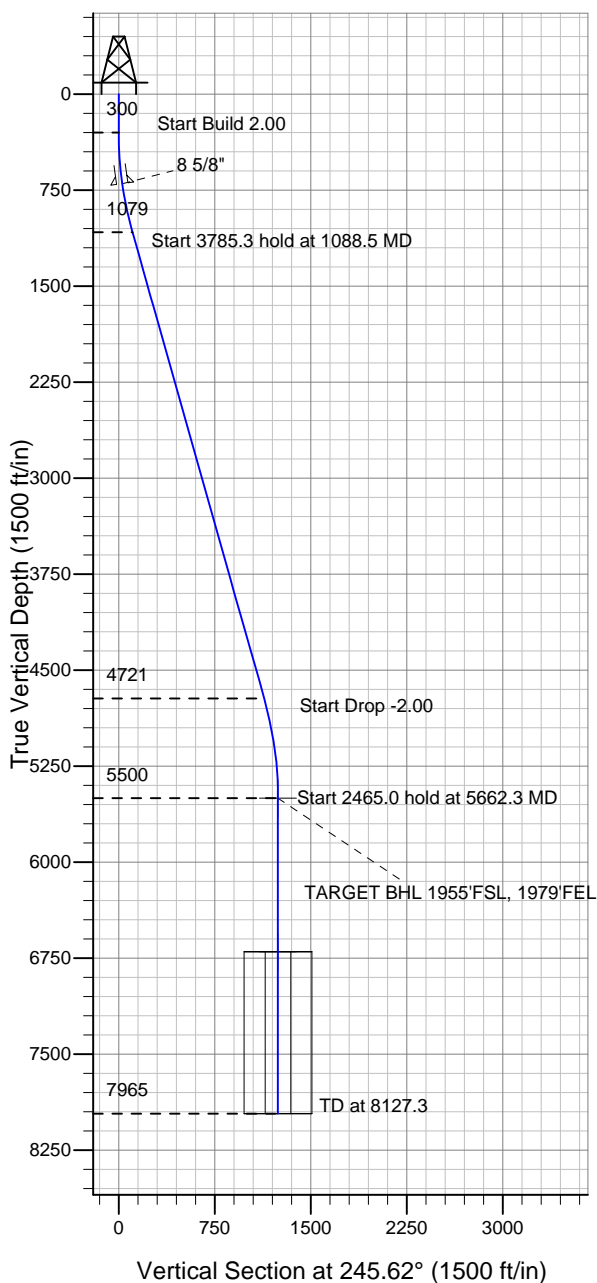
Well Name: SRC Aims 33-10D

Surface Location: SRC Aims/GCC Pad Sec.10-T5N-R66W
North American Datum 1983 US State Plane 1983 Wyoming Western Zone

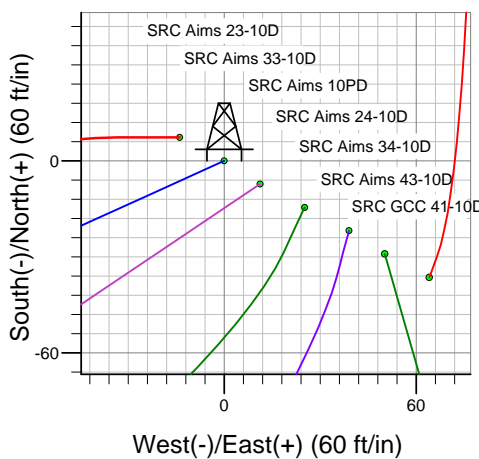
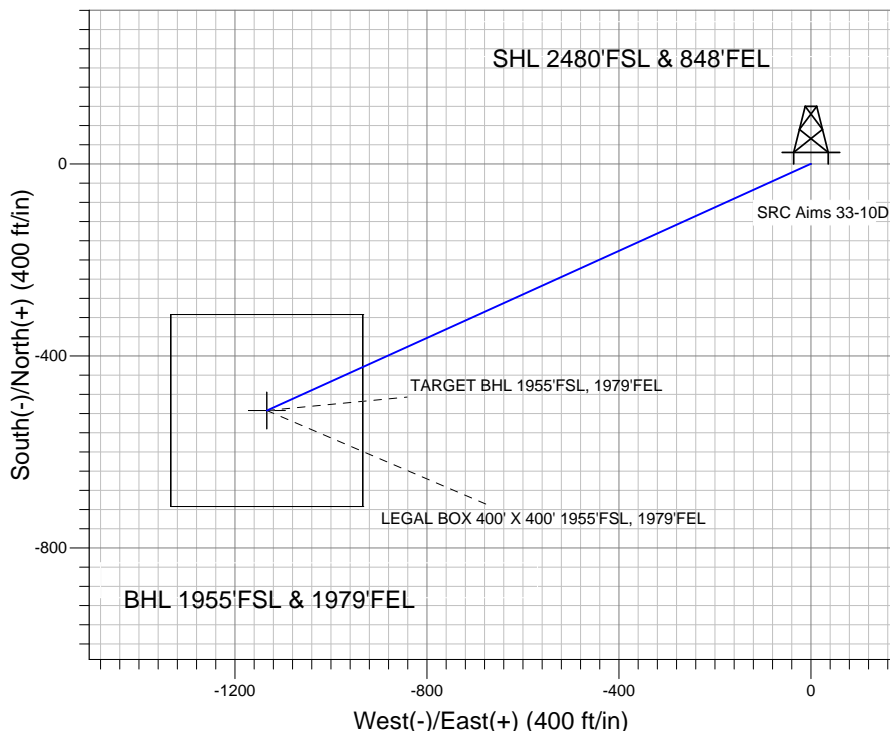
Ground Elevation: 4859.0

+N/-S	+E/-W	Northing	Easting	Latitude	Longitude	Slot
0.0	0.0	341377.62	4107465.03	40.413700	-104.759330	

Original Well Elev WELL @ 4872.0ft (Original Well Elev)



Synergy Resources



SRC Aims/GCC Pad Sec.10-T5N-R66W
SRC Aims 33-10D
Plan #2 (9-21-11)
12:19, October 05 2011



Azimuths to True North
Magnetic North: 8.82°

Magnetic Field
Strength: 53106.6snT
Dip Angle: 67.05°
Date: 10/5/2011
Model: IGRF2010

WELLBORE TARGET DETAILS (LAT/LONG)

Name	TVD	+N/-S	+E/-W	Latitude	Longitude	Shape
TARGET BHL 1955'FSL, 1979'FEL	5500.0	-513.6	-1133.4	40.412290	-104.763400	Point
LEGAL BOX 400' X 400' 1955'FSL, 1979'FEL	6700.0	-513.7	-1133.5	40.412290	-104.763400	Rectangle (Sides: L400.0 W400.0)

SECTION DETAILS

Sec	MD	Inc	Azi	TVD	+N/-S	+E/-W	DLeg	TFace	VSec	Target
1	0.0	0.00	0.00	0.0	0.0	0.0	0.00	0.00	0.0	
2	300.0	0.00	0.00	300.0	0.0	0.0	0.00	0.00	0.0	
3	1088.5	15.77	245.62	1078.6	-44.5	-98.2	2.00	245.62	107.8	
4	4873.8	15.77	245.62	4721.4	-469.1	-1035.2	0.00	0.00	1136.6	
5	5662.3	0.00	0.00	5500.0	-513.6	-1133.4	2.00	180.00	1244.4	TARGET BHL 1955'FSL, 1979'FEL
6	8127.3	0.00	0.00	7965.0	-513.6	-1133.4	0.00	0.00	1244.4	



Directional

Synergy Resources

SEC.10-T5N-R66W

SRC Aims/GCC Pad Sec.10-T5N-R66W

SRC Aims 33-10D

Wellbore #1

Plan: Plan #2 (9-21-11)

Standard Planning Report

05 October, 2011

Plan Sections										
Measured Depth (ft)	Inclination (°)	Azimuth (°)	Vertical Depth (ft)	+N/-S (ft)	+E/-W (ft)	Dogleg Rate (°/100ft)	Build Rate (°/100ft)	Turn Rate (°/100ft)	TFO (°)	Target
0.0	0.00	0.00	0.0	0.0	0.0	0.00	0.00	0.00	0.00	
300.0	0.00	0.00	300.0	0.0	0.0	0.00	0.00	0.00	0.00	
1,088.5	15.77	245.62	1,078.6	-44.5	-98.2	2.00	2.00	0.00	245.62	
4,873.8	15.77	245.62	4,721.4	-469.1	-1,035.2	0.00	0.00	0.00	0.00	
5,662.3	0.00	0.00	5,500.0	-513.6	-1,133.4	2.00	-2.00	0.00	180.00	TARGET BHL 1955
8,127.3	0.00	0.00	7,965.0	-513.6	-1,133.4	0.00	0.00	0.00	0.00	

Database:	Landmark	Local Co-ordinate Reference:	Well SRC Aims 33-10D
Company:	Synergy Resources	TVD Reference:	WELL @ 4872.0ft (Original Well Elev)
Project:	SEC.10-T5N-R66W	MD Reference:	WELL @ 4872.0ft (Original Well Elev)
Site:	SRC Aims/GCC Pad Sec.10-T5N-R66W	North Reference:	True
Well:	SRC Aims 33-10D	Survey Calculation Method:	Minimum Curvature
Wellbore:	Wellbore #1		
Design:	Plan #2 (9-21-11)		

Planned Survey									
Measured Depth (ft)	Inclination (°)	Azimuth (°)	Vertical Depth (ft)	+N/-S (ft)	+E/-W (ft)	Vertical Section (ft)	Dogleg Rate (°/100ft)	Build Rate (°/100ft)	Turn Rate (°/100ft)
0.0	0.00	0.00	0.0	0.0	0.0	0.0	0.00	0.00	0.00
40.0	0.00	0.00	40.0	0.0	0.0	0.0	0.00	0.00	0.00
80.0	0.00	0.00	80.0	0.0	0.0	0.0	0.00	0.00	0.00
120.0	0.00	0.00	120.0	0.0	0.0	0.0	0.00	0.00	0.00
160.0	0.00	0.00	160.0	0.0	0.0	0.0	0.00	0.00	0.00
200.0	0.00	0.00	200.0	0.0	0.0	0.0	0.00	0.00	0.00
240.0	0.00	0.00	240.0	0.0	0.0	0.0	0.00	0.00	0.00
280.0	0.00	0.00	280.0	0.0	0.0	0.0	0.00	0.00	0.00
300.0	0.00	0.00	300.0	0.0	0.0	0.0	0.00	0.00	0.00
320.0	0.40	245.62	320.0	0.0	-0.1	0.1	2.00	2.00	0.00
360.0	1.20	245.62	360.0	-0.3	-0.6	0.6	2.00	2.00	0.00
400.0	2.00	245.62	400.0	-0.7	-1.6	1.7	2.00	2.00	0.00
440.0	2.80	245.62	439.9	-1.4	-3.1	3.4	2.00	2.00	0.00
480.0	3.60	245.62	479.9	-2.3	-5.1	5.7	2.00	2.00	0.00
520.0	4.40	245.62	519.8	-3.5	-7.7	8.4	2.00	2.00	0.00
560.0	5.20	245.62	559.6	-4.9	-10.7	11.8	2.00	2.00	0.00
600.0	6.00	245.62	599.5	-6.5	-14.3	15.7	2.00	2.00	0.00
640.0	6.80	245.62	639.2	-8.3	-18.4	20.2	2.00	2.00	0.00
680.0	7.60	245.62	678.9	-10.4	-22.9	25.2	2.00	2.00	0.00
701.3	8.03	245.62	700.0	-11.6	-25.6	28.1	2.00	2.00	0.00
8 5/8"									
720.0	8.40	245.62	718.5	-12.7	-28.0	30.7	2.00	2.00	0.00
760.0	9.20	245.62	758.0	-15.2	-33.6	36.9	2.00	2.00	0.00
800.0	10.00	245.62	797.5	-18.0	-39.6	43.5	2.00	2.00	0.00
840.0	10.80	245.62	836.8	-20.9	-46.2	50.7	2.00	2.00	0.00
880.0	11.60	245.62	876.0	-24.2	-53.3	58.5	2.00	2.00	0.00
920.0	12.40	245.62	915.2	-27.6	-60.9	66.8	2.00	2.00	0.00
960.0	13.20	245.62	954.2	-31.2	-68.9	75.7	2.00	2.00	0.00
1,000.0	14.00	245.62	993.1	-35.1	-77.5	85.1	2.00	2.00	0.00
1,040.0	14.80	245.62	1,031.8	-39.2	-86.6	95.0	2.00	2.00	0.00
1,080.0	15.60	245.62	1,070.4	-43.6	-96.1	105.5	2.00	2.00	0.00
1,088.5	15.77	245.62	1,078.6	-44.5	-98.2	107.8	2.00	2.00	0.00
1,120.0	15.77	245.62	1,108.9	-48.0	-106.0	116.4	0.00	0.00	0.00
1,160.0	15.77	245.62	1,147.4	-52.5	-115.9	127.3	0.00	0.00	0.00
1,200.0	15.77	245.62	1,185.9	-57.0	-125.8	138.1	0.00	0.00	0.00
1,240.0	15.77	245.62	1,224.4	-61.5	-135.7	149.0	0.00	0.00	0.00
1,280.0	15.77	245.62	1,262.9	-66.0	-145.6	159.9	0.00	0.00	0.00
1,320.0	15.77	245.62	1,301.4	-70.5	-155.5	170.7	0.00	0.00	0.00
1,360.0	15.77	245.62	1,339.9	-75.0	-165.4	181.6	0.00	0.00	0.00
1,400.0	15.77	245.62	1,378.4	-79.5	-175.3	192.5	0.00	0.00	0.00
1,440.0	15.77	245.62	1,416.9	-83.9	-185.2	203.4	0.00	0.00	0.00
1,480.0	15.77	245.62	1,455.3	-88.4	-195.1	214.2	0.00	0.00	0.00
1,520.0	15.77	245.62	1,493.8	-92.9	-205.0	225.1	0.00	0.00	0.00
1,560.0	15.77	245.62	1,532.3	-97.4	-214.9	236.0	0.00	0.00	0.00
1,600.0	15.77	245.62	1,570.8	-101.9	-224.8	246.8	0.00	0.00	0.00
1,640.0	15.77	245.62	1,609.3	-106.4	-234.7	257.7	0.00	0.00	0.00
1,680.0	15.77	245.62	1,647.8	-110.9	-244.6	268.6	0.00	0.00	0.00
1,720.0	15.77	245.62	1,686.3	-115.4	-254.5	279.5	0.00	0.00	0.00
1,760.0	15.77	245.62	1,724.8	-119.8	-264.4	290.3	0.00	0.00	0.00
1,800.0	15.77	245.62	1,763.3	-124.3	-274.3	301.2	0.00	0.00	0.00
1,840.0	15.77	245.62	1,801.8	-128.8	-284.2	312.1	0.00	0.00	0.00
1,880.0	15.77	245.62	1,840.3	-133.3	-294.1	322.9	0.00	0.00	0.00
1,920.0	15.77	245.62	1,878.8	-137.8	-304.0	333.8	0.00	0.00	0.00
1,960.0	15.77	245.62	1,917.3	-142.3	-313.9	344.7	0.00	0.00	0.00

Database:	Landmark	Local Co-ordinate Reference:	Well SRC Aims 33-10D
Company:	Synergy Resources	TVD Reference:	WELL @ 4872.0ft (Original Well Elev)
Project:	SEC.10-T5N-R66W	MD Reference:	WELL @ 4872.0ft (Original Well Elev)
Site:	SRC Aims/GCC Pad Sec.10-T5N-R66W	North Reference:	True
Well:	SRC Aims 33-10D	Survey Calculation Method:	Minimum Curvature
Wellbore:	Wellbore #1		
Design:	Plan #2 (9-21-11)		

Planned Survey										
Measured Depth (ft)	Inclination (°)	Azimuth (°)	Vertical Depth (ft)	+N/-S (ft)	+E/-W (ft)	Vertical Section (ft)	Dogleg Rate (°/100ft)	Build Rate (°/100ft)	Turn Rate (°/100ft)	
2,000.0	15.77	245.62	1,955.8	-146.8	-323.8	355.5	0.00	0.00	0.00	
2,040.0	15.77	245.62	1,994.3	-151.2	-333.7	366.4	0.00	0.00	0.00	
2,080.0	15.77	245.62	2,032.8	-155.7	-343.6	377.3	0.00	0.00	0.00	
2,120.0	15.77	245.62	2,071.3	-160.2	-353.5	388.2	0.00	0.00	0.00	
2,160.0	15.77	245.62	2,109.8	-164.7	-363.4	399.0	0.00	0.00	0.00	
2,200.0	15.77	245.62	2,148.2	-169.2	-373.4	409.9	0.00	0.00	0.00	
2,240.0	15.77	245.62	2,186.7	-173.7	-383.3	420.8	0.00	0.00	0.00	
2,280.0	15.77	245.62	2,225.2	-178.2	-393.2	431.6	0.00	0.00	0.00	
2,320.0	15.77	245.62	2,263.7	-182.7	-403.1	442.5	0.00	0.00	0.00	
2,360.0	15.77	245.62	2,302.2	-187.1	-413.0	453.4	0.00	0.00	0.00	
2,400.0	15.77	245.62	2,340.7	-191.6	-422.9	464.3	0.00	0.00	0.00	
2,440.0	15.77	245.62	2,379.2	-196.1	-432.8	475.1	0.00	0.00	0.00	
2,480.0	15.77	245.62	2,417.7	-200.6	-442.7	486.0	0.00	0.00	0.00	
2,520.0	15.77	245.62	2,456.2	-205.1	-452.6	496.9	0.00	0.00	0.00	
2,560.0	15.77	245.62	2,494.7	-209.6	-462.5	507.7	0.00	0.00	0.00	
2,600.0	15.77	245.62	2,533.2	-214.1	-472.4	518.6	0.00	0.00	0.00	
2,640.0	15.77	245.62	2,571.7	-218.6	-482.3	529.5	0.00	0.00	0.00	
2,680.0	15.77	245.62	2,610.2	-223.0	-492.2	540.3	0.00	0.00	0.00	
2,720.0	15.77	245.62	2,648.7	-227.5	-502.1	551.2	0.00	0.00	0.00	
2,760.0	15.77	245.62	2,687.2	-232.0	-512.0	562.1	0.00	0.00	0.00	
2,800.0	15.77	245.62	2,725.7	-236.5	-521.9	573.0	0.00	0.00	0.00	
2,840.0	15.77	245.62	2,764.2	-241.0	-531.8	583.8	0.00	0.00	0.00	
2,880.0	15.77	245.62	2,802.7	-245.5	-541.7	594.7	0.00	0.00	0.00	
2,920.0	15.77	245.62	2,841.1	-250.0	-551.6	605.6	0.00	0.00	0.00	
2,960.0	15.77	245.62	2,879.6	-254.5	-561.5	616.4	0.00	0.00	0.00	
3,000.0	15.77	245.62	2,918.1	-258.9	-571.4	627.3	0.00	0.00	0.00	
3,040.0	15.77	245.62	2,956.6	-263.4	-581.3	638.2	0.00	0.00	0.00	
3,080.0	15.77	245.62	2,995.1	-267.9	-591.2	649.1	0.00	0.00	0.00	
3,120.0	15.77	245.62	3,033.6	-272.4	-601.1	659.9	0.00	0.00	0.00	
3,160.0	15.77	245.62	3,072.1	-276.9	-611.0	670.8	0.00	0.00	0.00	
3,200.0	15.77	245.62	3,110.6	-281.4	-620.9	681.7	0.00	0.00	0.00	
3,240.0	15.77	245.62	3,149.1	-285.9	-630.8	692.5	0.00	0.00	0.00	
3,280.0	15.77	245.62	3,187.6	-290.3	-640.7	703.4	0.00	0.00	0.00	
3,320.0	15.77	245.62	3,226.1	-294.8	-650.6	714.3	0.00	0.00	0.00	
3,360.0	15.77	245.62	3,264.6	-299.3	-660.5	725.2	0.00	0.00	0.00	
3,400.0	15.77	245.62	3,303.1	-303.8	-670.4	736.0	0.00	0.00	0.00	
3,440.0	15.77	245.62	3,341.6	-308.3	-680.3	746.9	0.00	0.00	0.00	
3,480.0	15.77	245.62	3,380.1	-312.8	-690.2	757.8	0.00	0.00	0.00	
3,520.0	15.77	245.62	3,418.6	-317.3	-700.1	768.6	0.00	0.00	0.00	
3,560.0	15.77	245.62	3,457.1	-321.8	-710.0	779.5	0.00	0.00	0.00	
3,600.0	15.77	245.62	3,495.6	-326.2	-719.9	790.4	0.00	0.00	0.00	
3,640.0	15.77	245.62	3,534.1	-330.7	-729.8	801.2	0.00	0.00	0.00	
3,680.0	15.77	245.62	3,572.5	-335.2	-739.7	812.1	0.00	0.00	0.00	
3,720.0	15.77	245.62	3,611.0	-339.7	-749.6	823.0	0.00	0.00	0.00	
3,760.0	15.77	245.62	3,649.5	-344.2	-759.5	833.9	0.00	0.00	0.00	
3,800.0	15.77	245.62	3,688.0	-348.7	-769.4	844.7	0.00	0.00	0.00	
3,840.0	15.77	245.62	3,726.5	-353.2	-779.3	855.6	0.00	0.00	0.00	
3,880.0	15.77	245.62	3,765.0	-357.7	-789.2	866.5	0.00	0.00	0.00	
3,920.0	15.77	245.62	3,803.5	-362.1	-799.1	877.3	0.00	0.00	0.00	
3,960.0	15.77	245.62	3,842.0	-366.6	-809.0	888.2	0.00	0.00	0.00	
4,000.0	15.77	245.62	3,880.5	-371.1	-818.9	899.1	0.00	0.00	0.00	
4,040.0	15.77	245.62	3,919.0	-375.6	-828.8	910.0	0.00	0.00	0.00	
4,080.0	15.77	245.62	3,957.5	-380.1	-838.7	920.8	0.00	0.00	0.00	
4,120.0	15.77	245.62	3,996.0	-384.6	-848.6	931.7	0.00	0.00	0.00	

Database:	Landmark	Local Co-ordinate Reference:	Well SRC Aims 33-10D
Company:	Synergy Resources	TVD Reference:	WELL @ 4872.0ft (Original Well Elev)
Project:	SEC.10-T5N-R66W	MD Reference:	WELL @ 4872.0ft (Original Well Elev)
Site:	SRC Aims/GCC Pad Sec.10-T5N-R66W	North Reference:	True
Well:	SRC Aims 33-10D	Survey Calculation Method:	Minimum Curvature
Wellbore:	Wellbore #1		
Design:	Plan #2 (9-21-11)		

Planned Survey									
Measured Depth (ft)	Inclination (°)	Azimuth (°)	Vertical Depth (ft)	+N/-S (ft)	+E/-W (ft)	Vertical Section (ft)	Dogleg Rate (°/100ft)	Build Rate (°/100ft)	Turn Rate (°/100ft)
4,160.0	15.77	245.62	4,034.5	-389.1	-858.5	942.6	0.00	0.00	0.00
4,200.0	15.77	245.62	4,073.0	-393.6	-868.4	953.4	0.00	0.00	0.00
4,240.0	15.77	245.62	4,111.5	-398.0	-878.3	964.3	0.00	0.00	0.00
4,280.0	15.77	245.62	4,150.0	-402.5	-888.2	975.2	0.00	0.00	0.00
4,320.0	15.77	245.62	4,188.5	-407.0	-898.1	986.0	0.00	0.00	0.00
4,360.0	15.77	245.62	4,227.0	-411.5	-908.0	996.9	0.00	0.00	0.00
4,400.0	15.77	245.62	4,265.4	-416.0	-917.9	1,007.8	0.00	0.00	0.00
4,440.0	15.77	245.62	4,303.9	-420.5	-927.8	1,018.7	0.00	0.00	0.00
4,480.0	15.77	245.62	4,342.4	-425.0	-937.7	1,029.5	0.00	0.00	0.00
4,520.0	15.77	245.62	4,380.9	-429.5	-947.6	1,040.4	0.00	0.00	0.00
4,560.0	15.77	245.62	4,419.4	-433.9	-957.5	1,051.3	0.00	0.00	0.00
4,600.0	15.77	245.62	4,457.9	-438.4	-967.4	1,062.1	0.00	0.00	0.00
4,640.0	15.77	245.62	4,496.4	-442.9	-977.3	1,073.0	0.00	0.00	0.00
4,680.0	15.77	245.62	4,534.9	-447.4	-987.2	1,083.9	0.00	0.00	0.00
4,720.0	15.77	245.62	4,573.4	-451.9	-997.1	1,094.8	0.00	0.00	0.00
4,760.0	15.77	245.62	4,611.9	-456.4	-1,007.0	1,105.6	0.00	0.00	0.00
4,800.0	15.77	245.62	4,650.4	-460.9	-1,016.9	1,116.5	0.00	0.00	0.00
4,840.0	15.77	245.62	4,688.9	-465.3	-1,026.8	1,127.4	0.00	0.00	0.00
4,873.8	15.77	245.62	4,721.4	-469.1	-1,035.2	1,136.6	0.00	0.00	0.00
4,880.0	15.65	245.62	4,727.4	-469.8	-1,036.7	1,138.2	2.00	-2.00	0.00
4,920.0	14.85	245.62	4,766.0	-474.2	-1,046.3	1,148.8	2.00	-2.00	0.00
4,960.0	14.05	245.62	4,804.7	-478.3	-1,055.4	1,158.7	2.00	-2.00	0.00
5,000.0	13.25	245.62	4,843.6	-482.2	-1,064.0	1,168.2	2.00	-2.00	0.00
5,040.0	12.45	245.62	4,882.6	-485.9	-1,072.1	1,177.1	2.00	-2.00	0.00
5,080.0	11.65	245.62	4,921.7	-489.3	-1,079.7	1,185.4	2.00	-2.00	0.00
5,120.0	10.85	245.62	4,960.9	-492.5	-1,086.8	1,193.2	2.00	-2.00	0.00
5,160.0	10.05	245.62	5,000.3	-495.5	-1,093.4	1,200.5	2.00	-2.00	0.00
5,200.0	9.25	245.62	5,039.7	-498.3	-1,099.5	1,207.2	2.00	-2.00	0.00
5,240.0	8.45	245.62	5,079.2	-500.8	-1,105.1	1,213.3	2.00	-2.00	0.00
5,280.0	7.65	245.62	5,118.8	-503.1	-1,110.2	1,218.9	2.00	-2.00	0.00
5,320.0	6.85	245.62	5,158.5	-505.2	-1,114.8	1,224.0	2.00	-2.00	0.00
5,360.0	6.05	245.62	5,198.3	-507.1	-1,118.9	1,228.4	2.00	-2.00	0.00
5,400.0	5.25	245.62	5,238.1	-508.7	-1,122.5	1,232.4	2.00	-2.00	0.00
5,440.0	4.45	245.62	5,277.9	-510.1	-1,125.6	1,235.8	2.00	-2.00	0.00
5,480.0	3.65	245.62	5,317.8	-511.3	-1,128.1	1,238.6	2.00	-2.00	0.00
5,520.0	2.85	245.62	5,357.8	-512.2	-1,130.2	1,240.9	2.00	-2.00	0.00
5,560.0	2.05	245.62	5,397.7	-512.9	-1,131.8	1,242.6	2.00	-2.00	0.00
5,600.0	1.25	245.62	5,437.7	-513.4	-1,132.8	1,243.7	2.00	-2.00	0.00
5,640.0	0.45	245.62	5,477.7	-513.6	-1,133.3	1,244.3	2.00	-2.00	0.00
5,662.3	0.00	0.00	5,500.0	-513.6	-1,133.4	1,244.4	2.00	-2.00	0.00
TARGET BHL 1955'FSL, 1979'FEL									
5,680.0	0.00	0.00	5,517.7	-513.6	-1,133.4	1,244.4	0.00	0.00	0.00
5,720.0	0.00	0.00	5,557.7	-513.6	-1,133.4	1,244.4	0.00	0.00	0.00
5,760.0	0.00	0.00	5,597.7	-513.6	-1,133.4	1,244.4	0.00	0.00	0.00
5,800.0	0.00	0.00	5,637.7	-513.6	-1,133.4	1,244.4	0.00	0.00	0.00
5,840.0	0.00	0.00	5,677.7	-513.6	-1,133.4	1,244.4	0.00	0.00	0.00
5,880.0	0.00	0.00	5,717.7	-513.6	-1,133.4	1,244.4	0.00	0.00	0.00
5,920.0	0.00	0.00	5,757.7	-513.6	-1,133.4	1,244.4	0.00	0.00	0.00
5,960.0	0.00	0.00	5,797.7	-513.6	-1,133.4	1,244.4	0.00	0.00	0.00
6,000.0	0.00	0.00	5,837.7	-513.6	-1,133.4	1,244.4	0.00	0.00	0.00
6,040.0	0.00	0.00	5,877.7	-513.6	-1,133.4	1,244.4	0.00	0.00	0.00
6,080.0	0.00	0.00	5,917.7	-513.6	-1,133.4	1,244.4	0.00	0.00	0.00
6,120.0	0.00	0.00	5,957.7	-513.6	-1,133.4	1,244.4	0.00	0.00	0.00
6,160.0	0.00	0.00	5,997.7	-513.6	-1,133.4	1,244.4	0.00	0.00	0.00

Database:	Landmark	Local Co-ordinate Reference:	Well SRC Aims 33-10D
Company:	Synergy Resources	TVD Reference:	WELL @ 4872.0ft (Original Well Elev)
Project:	SEC.10-T5N-R66W	MD Reference:	WELL @ 4872.0ft (Original Well Elev)
Site:	SRC Aims/GCC Pad Sec.10-T5N-R66W	North Reference:	True
Well:	SRC Aims 33-10D	Survey Calculation Method:	Minimum Curvature
Wellbore:	Wellbore #1		
Design:	Plan #2 (9-21-11)		

Planned Survey									
Measured Depth (ft)	Inclination (°)	Azimuth (°)	Vertical Depth (ft)	+N/-S (ft)	+E/-W (ft)	Vertical Section (ft)	Dogleg Rate (°/100ft)	Build Rate (°/100ft)	Turn Rate (°/100ft)
6,200.0	0.00	0.00	6,037.7	-513.6	-1,133.4	1,244.4	0.00	0.00	0.00
6,240.0	0.00	0.00	6,077.7	-513.6	-1,133.4	1,244.4	0.00	0.00	0.00
6,280.0	0.00	0.00	6,117.7	-513.6	-1,133.4	1,244.4	0.00	0.00	0.00
6,320.0	0.00	0.00	6,157.7	-513.6	-1,133.4	1,244.4	0.00	0.00	0.00
6,360.0	0.00	0.00	6,197.7	-513.6	-1,133.4	1,244.4	0.00	0.00	0.00
6,400.0	0.00	0.00	6,237.7	-513.6	-1,133.4	1,244.4	0.00	0.00	0.00
6,440.0	0.00	0.00	6,277.7	-513.6	-1,133.4	1,244.4	0.00	0.00	0.00
6,480.0	0.00	0.00	6,317.7	-513.6	-1,133.4	1,244.4	0.00	0.00	0.00
6,520.0	0.00	0.00	6,357.7	-513.6	-1,133.4	1,244.4	0.00	0.00	0.00
6,560.0	0.00	0.00	6,397.7	-513.6	-1,133.4	1,244.4	0.00	0.00	0.00
6,600.0	0.00	0.00	6,437.7	-513.6	-1,133.4	1,244.4	0.00	0.00	0.00
6,640.0	0.00	0.00	6,477.7	-513.6	-1,133.4	1,244.4	0.00	0.00	0.00
6,680.0	0.00	0.00	6,517.7	-513.6	-1,133.4	1,244.4	0.00	0.00	0.00
6,720.0	0.00	0.00	6,557.7	-513.6	-1,133.4	1,244.4	0.00	0.00	0.00
6,760.0	0.00	0.00	6,597.7	-513.6	-1,133.4	1,244.4	0.00	0.00	0.00
6,800.0	0.00	0.00	6,637.7	-513.6	-1,133.4	1,244.4	0.00	0.00	0.00
6,840.0	0.00	0.00	6,677.7	-513.6	-1,133.4	1,244.4	0.00	0.00	0.00
6,862.3	0.00	0.00	6,700.0	-513.6	-1,133.4	1,244.4	0.00	0.00	0.00
LEGAL BOX 400' X 400' 1955'FSL, 1979'FEL									
6,880.0	0.00	0.00	6,717.7	-513.6	-1,133.4	1,244.4	0.00	0.00	0.00
6,920.0	0.00	0.00	6,757.7	-513.6	-1,133.4	1,244.4	0.00	0.00	0.00
6,960.0	0.00	0.00	6,797.7	-513.6	-1,133.4	1,244.4	0.00	0.00	0.00
7,000.0	0.00	0.00	6,837.7	-513.6	-1,133.4	1,244.4	0.00	0.00	0.00
7,040.0	0.00	0.00	6,877.7	-513.6	-1,133.4	1,244.4	0.00	0.00	0.00
7,080.0	0.00	0.00	6,917.7	-513.6	-1,133.4	1,244.4	0.00	0.00	0.00
7,120.0	0.00	0.00	6,957.7	-513.6	-1,133.4	1,244.4	0.00	0.00	0.00
7,160.0	0.00	0.00	6,997.7	-513.6	-1,133.4	1,244.4	0.00	0.00	0.00
7,200.0	0.00	0.00	7,037.7	-513.6	-1,133.4	1,244.4	0.00	0.00	0.00
7,240.0	0.00	0.00	7,077.7	-513.6	-1,133.4	1,244.4	0.00	0.00	0.00
7,280.0	0.00	0.00	7,117.7	-513.6	-1,133.4	1,244.4	0.00	0.00	0.00
7,320.0	0.00	0.00	7,157.7	-513.6	-1,133.4	1,244.4	0.00	0.00	0.00
7,360.0	0.00	0.00	7,197.7	-513.6	-1,133.4	1,244.4	0.00	0.00	0.00
7,400.0	0.00	0.00	7,237.7	-513.6	-1,133.4	1,244.4	0.00	0.00	0.00
7,440.0	0.00	0.00	7,277.7	-513.6	-1,133.4	1,244.4	0.00	0.00	0.00
7,480.0	0.00	0.00	7,317.7	-513.6	-1,133.4	1,244.4	0.00	0.00	0.00
7,520.0	0.00	0.00	7,357.7	-513.6	-1,133.4	1,244.4	0.00	0.00	0.00
7,560.0	0.00	0.00	7,397.7	-513.6	-1,133.4	1,244.4	0.00	0.00	0.00
7,600.0	0.00	0.00	7,437.7	-513.6	-1,133.4	1,244.4	0.00	0.00	0.00
7,640.0	0.00	0.00	7,477.7	-513.6	-1,133.4	1,244.4	0.00	0.00	0.00
7,680.0	0.00	0.00	7,517.7	-513.6	-1,133.4	1,244.4	0.00	0.00	0.00
7,720.0	0.00	0.00	7,557.7	-513.6	-1,133.4	1,244.4	0.00	0.00	0.00
7,760.0	0.00	0.00	7,597.7	-513.6	-1,133.4	1,244.4	0.00	0.00	0.00
7,800.0	0.00	0.00	7,637.7	-513.6	-1,133.4	1,244.4	0.00	0.00	0.00
7,840.0	0.00	0.00	7,677.7	-513.6	-1,133.4	1,244.4	0.00	0.00	0.00
7,880.0	0.00	0.00	7,717.7	-513.6	-1,133.4	1,244.4	0.00	0.00	0.00
7,920.0	0.00	0.00	7,757.7	-513.6	-1,133.4	1,244.4	0.00	0.00	0.00
7,960.0	0.00	0.00	7,797.7	-513.6	-1,133.4	1,244.4	0.00	0.00	0.00
8,000.0	0.00	0.00	7,837.7	-513.6	-1,133.4	1,244.4	0.00	0.00	0.00
8,040.0	0.00	0.00	7,877.7	-513.6	-1,133.4	1,244.4	0.00	0.00	0.00
8,080.0	0.00	0.00	7,917.7	-513.6	-1,133.4	1,244.4	0.00	0.00	0.00
8,120.0	0.00	0.00	7,957.7	-513.6	-1,133.4	1,244.4	0.00	0.00	0.00
8,127.3	0.00	0.00	7,965.0	-513.6	-1,133.4	1,244.4	0.00	0.00	0.00

Database:	Landmark	Local Co-ordinate Reference:	Well SRC Aims 33-10D
Company:	Synergy Resources	TVD Reference:	WELL @ 4872.0ft (Original Well Elev)
Project:	SEC.10-T5N-R66W	MD Reference:	WELL @ 4872.0ft (Original Well Elev)
Site:	SRC Aims/GCC Pad Sec.10-T5N-R66W	North Reference:	True
Well:	SRC Aims 33-10D	Survey Calculation Method:	Minimum Curvature
Wellbore:	Wellbore #1		
Design:	Plan #2 (9-21-11)		

Targets									
Target Name									
- hit/miss target	Dip Angle	Dip Dir.	TVD	+N/-S	+E/-W	Northing	Easting	Latitude	Longitude
- Shape	(°)	(°)	(ft)	(ft)	(ft)	(ft)	(ft)		
TARGET BHL 1955'F:	0.00	0.00	5,500.0	-513.6	-1,133.4	340,795.16	4,106,361.93	40.412290	-104.763400
- plan hits target center									
- Point									
LEGAL BOX 400' X 400'	0.00	0.00	6,700.0	-513.7	-1,133.5	340,795.14	4,106,361.90	40.412290	-104.763400
- plan hits target center									
- Rectangle (sides W400.0 H400.0 D1,265.0)									

Casing Points					
Measured Depth (ft)	Vertical Depth (ft)	Name	Casing Diameter (")	Hole Diameter (")	
701.3	700.0	8 5/8"	8-5/8	12-1/4	



Directional

Synergy Resources

SEC.10-T5N-R66W

SRC Aims/GCC Pad Sec.10-T5N-R66W

SRC Aims 33-10D

Wellbore #1

Plan #2 (9-21-11)

Anticollision Report

05 October, 2011

SRC Aims/GCC Pad Sec.10-T5N-R66W - SRC Aims 10PD - Wellbore #1 - Plan #2 (9-21-11)													Offset Site Error:	0.0 ft
Survey Program: 0-MWD													Offset Well Error:	0.0 ft
Reference		Offset		Semi Major Axis			Distance							Warning
Measured Depth (ft)	Vertical Depth (ft)	Measured Depth (ft)	Vertical Depth (ft)	Reference (ft)	Offset (ft)	Highside Toolface (°)	Offset Wellbore Centre +N/-S (ft)	+E/-W (ft)	Between Centres (ft)	Between Ellipses (ft)	Minimum Separation (ft)	Separation Factor		
2,200.0	2,148.2	2,196.5	2,105.4	9.4	11.1	-47.73	-286.6	-404.4	128.8	112.8	16.01	8.045		
2,300.0	2,244.5	2,295.0	2,194.5	10.0	12.0	-44.99	-309.9	-439.2	144.8	128.2	16.60	8.723		
2,400.0	2,340.7	2,393.5	2,283.7	10.6	12.8	-42.80	-333.3	-474.0	161.0	143.8	17.22	9.354		
2,500.0	2,437.0	2,492.0	2,372.8	11.1	13.7	-41.01	-356.7	-508.7	177.5	159.6	17.86	9.941		
2,600.0	2,533.2	2,590.5	2,462.0	11.7	14.6	-39.53	-380.0	-543.5	194.1	175.6	18.51	10.484		
2,700.0	2,629.4	2,689.0	2,551.1	12.3	15.5	-38.28	-403.4	-578.2	210.8	191.6	19.19	10.987		
2,800.0	2,725.7	2,787.5	2,640.3	12.9	16.3	-37.21	-426.7	-613.0	227.6	207.7	19.87	11.453		
2,900.0	2,821.9	2,886.0	2,729.4	13.5	17.2	-36.29	-450.1	-647.8	244.4	223.8	20.57	11.885		
3,000.0	2,918.1	2,984.5	2,818.6	14.1	18.1	-35.49	-473.5	-682.5	261.3	240.0	21.27	12.286		
3,100.0	3,014.4	3,083.0	2,907.7	14.6	19.0	-34.79	-496.8	-717.3	278.3	256.3	21.98	12.659		
3,200.0	3,110.6	3,181.5	2,996.9	15.2	19.9	-34.16	-520.2	-752.0	295.2	272.5	22.70	13.007		
3,300.0	3,206.8	3,280.0	3,086.0	15.8	20.7	-33.61	-543.5	-786.8	312.2	288.8	23.42	13.332		
3,400.0	3,303.1	3,378.5	3,175.2	16.4	21.6	-33.11	-566.9	-821.6	329.3	305.1	24.15	13.636		
3,500.0	3,399.3	3,477.0	3,264.4	17.0	22.5	-32.66	-590.3	-856.3	346.3	321.5	24.88	13.921		
3,600.0	3,495.6	3,575.5	3,353.5	17.6	23.4	-32.25	-613.6	-891.1	363.4	337.8	25.61	14.188		
3,700.0	3,591.8	3,674.0	3,442.7	18.1	24.3	-31.88	-637.0	-925.9	380.5	354.2	26.35	14.439		
3,800.0	3,688.0	3,772.5	3,531.8	18.7	25.1	-31.54	-660.3	-960.6	397.6	370.5	27.09	14.676		
3,900.0	3,784.3	3,871.0	3,621.0	19.3	26.0	-31.23	-683.7	-995.4	414.7	386.9	27.84	14.899		
4,000.0	3,880.5	3,969.5	3,710.1	19.9	26.9	-30.95	-707.1	-1,030.1	431.9	403.3	28.58	15.110		
4,100.0	3,976.7	4,068.0	3,799.3	20.5	27.8	-30.68	-730.4	-1,064.9	449.0	419.7	29.33	15.310		
4,200.0	4,073.0	4,166.5	3,888.4	21.1	28.7	-30.44	-753.8	-1,099.7	466.2	436.1	30.08	15.499		
4,300.0	4,169.2	4,265.0	3,977.6	21.7	29.6	-30.21	-777.1	-1,134.4	483.3	452.5	30.83	15.678		
4,400.0	4,265.4	4,363.5	4,066.7	22.2	30.4	-30.00	-800.5	-1,169.2	500.5	468.9	31.58	15.848		
4,500.0	4,361.7	4,462.0	4,155.9	22.8	31.3	-29.80	-823.9	-1,203.9	517.6	485.3	32.33	16.010		
4,600.0	4,457.9	4,560.5	4,245.0	23.4	32.2	-29.62	-847.2	-1,238.7	534.8	501.7	33.09	16.164		
4,700.0	4,554.2	4,659.0	4,334.2	24.0	33.1	-29.44	-870.6	-1,273.5	552.0	518.2	33.84	16.311		
4,800.0	4,650.4	4,757.5	4,423.3	24.6	34.0	-29.28	-893.9	-1,308.2	569.2	534.6	34.60	16.451		
4,873.8	4,721.4	4,830.2	4,489.2	25.0	34.6	-29.17	-911.2	-1,333.9	581.9	546.7	35.16	16.550		
4,900.0	4,746.7	4,856.0	4,512.5	25.1	34.9	-29.17	-917.3	-1,343.0	586.5	551.1	35.35	16.591		
5,000.0	4,843.6	4,954.0	4,601.2	25.5	35.8	-29.09	-940.6	-1,377.6	606.0	570.0	35.98	16.841		
5,100.0	4,941.3	5,051.4	4,689.3	25.9	36.6	-28.91	-963.6	-1,411.9	628.4	591.9	36.50	17.215		
5,200.0	5,039.7	5,147.9	4,776.7	26.2	37.5	-28.63	-986.5	-1,446.0	653.9	617.0	36.93	17.709		
5,300.0	5,138.7	5,243.5	4,863.2	26.5	38.4	-28.28	-1,009.2	-1,479.7	682.4	645.2	37.25	18.318		
5,400.0	5,238.1	5,361.0	4,970.2	26.7	39.2	-27.73	-1,036.2	-1,520.0	712.8	675.3	37.47	19.024		
5,500.0	5,337.8	5,486.7	5,086.8	26.8	40.0	-27.16	-1,062.5	-1,559.0	742.3	704.7	37.59	19.746		
5,600.0	5,437.7	5,614.5	5,207.3	27.0	40.7	-26.60	-1,086.2	-1,594.3	770.8	733.2	37.64	20.477		
5,662.3	5,500.0	5,695.3	5,284.4	27.0	41.1	-140.63	-1,099.6	-1,614.3	788.1	750.4	37.64	20.935		
5,700.0	5,537.7	5,744.6	5,331.8	27.1	41.3	-140.34	-1,107.2	-1,625.6	798.1	760.4	37.68	21.182		
5,800.0	5,637.7	5,877.9	5,461.0	27.2	41.8	-139.67	-1,125.5	-1,652.8	821.8	783.9	37.82	21.729		
5,900.0	5,737.7	6,014.0	5,594.3	27.2	42.3	-139.16	-1,140.7	-1,675.3	841.0	803.0	38.01	22.124		
6,000.0	5,837.7	6,152.4	5,731.1	27.3	42.7	-138.79	-1,152.4	-1,692.9	855.8	817.6	38.25	22.375		
6,100.0	5,937.7	6,292.7	5,870.6	27.4	42.9	-138.54	-1,160.6	-1,705.0	865.9	827.4	38.51	22.483		
6,200.0	6,037.7	6,434.0	6,011.7	27.5	43.1	-138.41	-1,165.0	-1,711.5	871.3	832.5	38.80	22.457		
6,300.0	6,137.7	6,560.0	6,137.7	27.6	43.2	-138.39	-1,165.7	-1,712.7	872.2	833.1	39.09	22.314		
6,400.0	6,237.7	6,660.0	6,237.7	27.7	43.3	-138.39	-1,165.7	-1,712.7	872.2	832.9	39.35	22.163		
6,500.0	6,337.7	6,760.0	6,337.7	27.8	43.3	-138.39	-1,165.7	-1,712.7	872.2	832.6	39.62	22.012		
6,600.0	6,437.7	6,860.0	6,437.7	27.9	43.4	-138.39	-1,165.7	-1,712.7	872.2	832.3	39.90	21.862		
6,700.0	6,537.7	6,960.0	6,537.7	28.0	43.5	-138.39	-1,165.7	-1,712.7	872.2	832.0	40.17	21.711		
6,800.0	6,637.7	7,060.0	6,637.7	28.1	43.5	-138.39	-1,165.7	-1,712.7	872.2	831.8	40.45	21.562		
6,900.0	6,737.7	7,160.0	6,737.7	28.2	43.6	-138.39	-1,165.7	-1,712.7	872.2	831.5	40.73	21.413		
7,000.0	6,837.7	7,260.0	6,837.7	28.3	43.7	-138.39	-1,165.7	-1,712.7	872.2	831.2	41.02	21.264		
7,100.0	6,937.7	7,360.0	6,937.7	28.5	43.7	-138.39	-1,165.7	-1,712.7	872.2	830.9	41.31	21.116		

Company:	Synergy Resources	Local Co-ordinate Reference:	Well SRC Aims 33-10D
Project:	SEC.10-T5N-R66W	TVD Reference:	WELL @ 4872.0ft (Original Well Elev)
Reference Site:	SRC Aims/GCC Pad Sec.10-T5N-R66W	MD Reference:	WELL @ 4872.0ft (Original Well Elev)
Site Error:	0.0ft	North Reference:	True
Reference Well:	SRC Aims 33-10D	Survey Calculation Method:	Minimum Curvature
Well Error:	0.0ft	Output errors are at	2.00 sigma
Reference Wellbore	Wellbore #1	Database:	Landmark
Reference Design:	Plan #2 (9-21-11)	Offset TVD Reference:	Offset Datum

Offset Design												Offset Site Error:	0.0 ft
SRC Aims/GCC Pad Sec.10-T5N-R66W - SRC Aims 10PD - Wellbore #1 - Plan #2 (9-21-11)												Offset Well Error:	0.0 ft
Survey Program: 0-MWD													
Reference		Offset		Semi Major Axis			Distance						
Measured Depth (ft)	Vertical Depth (ft)	Measured Depth (ft)	Vertical Depth (ft)	Reference (ft)	Offset (ft)	Highside Toolface (°)	Offset Wellbore Centre +N/-S (ft)	+E/-W (ft)	Between Centres (ft)	Between Ellipses (ft)	Minimum Separation (ft)	Separation Factor	Warning
7,200.0	7,037.7	7,460.0	7,037.7	28.6	43.8	-138.39	-1,165.7	-1,712.7	872.2	830.6	41.60	20.968	
7,300.0	7,137.7	7,560.0	7,137.7	28.7	43.9	-138.39	-1,165.7	-1,712.7	872.2	830.3	41.89	20.821	
7,400.0	7,237.7	7,660.0	7,237.7	28.8	44.0	-138.39	-1,165.7	-1,712.7	872.2	830.0	42.19	20.675	
7,500.0	7,337.7	7,760.0	7,337.7	28.9	44.0	-138.39	-1,165.7	-1,712.7	872.2	829.7	42.49	20.530	
7,600.0	7,437.7	7,860.0	7,437.7	29.0	44.1	-138.39	-1,165.7	-1,712.7	872.2	829.4	42.79	20.385	
7,700.0	7,537.7	7,960.0	7,537.7	29.1	44.2	-138.39	-1,165.7	-1,712.7	872.2	829.1	43.09	20.241	
7,800.0	7,637.7	8,060.0	7,637.7	29.3	44.2	-138.39	-1,165.7	-1,712.7	872.2	828.8	43.40	20.098	
7,900.0	7,737.7	8,160.0	7,737.7	29.4	44.3	-138.39	-1,165.7	-1,712.7	872.2	828.5	43.71	19.956	
8,000.0	7,837.7	8,260.0	7,837.7	29.5	44.4	-138.39	-1,165.7	-1,712.7	872.2	828.2	44.02	19.815	
8,100.0	7,937.7	8,360.0	7,937.7	29.6	44.5	-138.39	-1,165.7	-1,712.7	872.2	827.9	44.33	19.675	
8,127.3	7,965.0	8,387.3	7,965.0	29.6	44.5	-138.39	-1,165.7	-1,712.7	872.2	827.8	44.42	19.637	

Company:	Synergy Resources	Local Co-ordinate Reference:	Well SRC Aims 33-10D
Project:	SEC.10-T5N-R66W	TVD Reference:	WELL @ 4872.0ft (Original Well Elev)
Reference Site:	SRC Aims/GCC Pad Sec.10-T5N-R66W	MD Reference:	WELL @ 4872.0ft (Original Well Elev)
Site Error:	0.0ft	North Reference:	True
Reference Well:	SRC Aims 33-10D	Survey Calculation Method:	Minimum Curvature
Well Error:	0.0ft	Output errors are at	2.00 sigma
Reference Wellbore	Wellbore #1	Database:	Landmark
Reference Design:	Plan #2 (9-21-11)	Offset TVD Reference:	Offset Datum

Offset Design													Offset Site Error:	0.0ft
Survey Program: 0-MWD													Offset Well Error:	0.0ft
Reference		Offset		Semi Major Axis			Distance							Warning
Measured Depth (ft)	Vertical Depth (ft)	Measured Depth (ft)	Vertical Depth (ft)	Reference (ft)	Offset (ft)	Highside Toolface (°)	Offset Wellbore Centre +N/-S (ft)	+E/-W (ft)	Between Centres (ft)	Between Ellipses (ft)	Minimum Separation (ft)	Separation Factor		
0.0	0.0	0.0	0.0	0.0	0.0	-62.33	7.3	-13.9	15.7	15.7	0.00	N/A		
100.0	100.0	100.0	100.0	0.1	0.1	-62.33	7.3	-13.9	15.7	15.5	0.22	69.947		
200.0	200.0	200.0	200.0	0.3	0.3	-62.33	7.3	-13.9	15.7	15.0	0.67	23.316 CC, ES		
300.0	300.0	299.5	299.5	0.6	0.6	-64.99	7.3	-15.7	17.3	16.2	1.11	15.521		
400.0	400.0	398.8	398.6	0.8	0.8	46.95	7.3	-20.8	20.9	19.3	1.54	13.573		
500.0	499.8	498.4	497.9	1.0	1.0	48.38	7.3	-29.0	24.9	23.0	1.97	12.646		
600.0	599.5	598.0	597.0	1.2	1.3	53.96	7.2	-38.1	27.6	25.1	2.44	11.293		
700.0	698.7	697.2	695.6	1.5	1.6	59.77	6.3	-50.0	30.5	27.5	2.97	10.266		
800.0	797.5	796.4	793.6	1.8	1.9	64.95	4.4	-65.1	34.1	30.6	3.59	9.500		
900.0	895.6	895.7	891.1	2.2	2.3	69.43	1.6	-83.6	38.5	34.1	4.33	8.885		
1,000.0	993.1	994.9	987.8	2.6	2.7	73.23	-2.1	-105.2	43.4	38.2	5.19	8.367		
1,088.5	1,078.6	1,082.6	1,072.7	3.1	3.2	76.08	-6.1	-127.0	48.3	42.3	6.07	7.968		
1,100.0	1,089.6	1,094.1	1,083.7	3.1	3.2	76.41	-6.7	-130.0	49.0	42.8	6.18	7.925		
1,200.0	1,185.9	1,193.2	1,178.6	3.7	3.8	77.03	-12.3	-158.0	55.6	48.4	7.25	7.674		
1,300.0	1,282.1	1,292.1	1,272.3	4.2	4.4	74.61	-18.7	-189.1	63.5	55.2	8.31	7.644 SF		
1,400.0	1,378.4	1,390.5	1,364.4	4.8	5.1	70.32	-26.0	-223.1	73.0	63.7	9.32	7.830		
1,500.0	1,474.6	1,488.7	1,455.1	5.4	5.9	65.17	-34.2	-259.8	84.5	74.3	10.26	8.235		
1,600.0	1,570.8	1,587.7	1,546.2	5.9	6.7	60.88	-42.5	-297.5	97.0	85.8	11.16	8.690		
1,700.0	1,667.1	1,686.7	1,637.4	6.5	7.5	57.59	-50.9	-335.2	109.9	97.8	12.04	9.124		
1,800.0	1,763.3	1,785.7	1,728.6	7.1	8.3	54.99	-59.3	-372.9	123.1	110.1	12.92	9.528		
1,900.0	1,859.5	1,884.7	1,819.7	7.7	9.1	52.89	-67.7	-410.5	136.4	122.6	13.78	9.898		
2,000.0	1,955.8	1,983.7	1,910.9	8.2	9.9	51.17	-76.1	-448.2	150.0	135.3	14.65	10.236		
2,100.0	2,052.0	2,082.6	2,002.0	8.8	10.8	49.74	-84.4	-485.9	163.6	148.1	15.52	10.544		
2,200.0	2,148.2	2,181.6	2,093.2	9.4	11.6	48.52	-92.8	-523.6	177.3	160.9	16.38	10.824		
2,300.0	2,244.5	2,280.6	2,184.3	10.0	12.4	47.49	-101.2	-561.3	191.1	173.8	17.25	11.080		
2,400.0	2,340.7	2,379.6	2,275.5	10.6	13.2	46.59	-109.6	-598.9	204.9	186.8	18.11	11.314		
2,500.0	2,437.0	2,478.6	2,366.6	11.1	14.1	45.80	-117.9	-636.6	218.8	199.8	18.98	11.528		
2,600.0	2,533.2	2,577.6	2,457.8	11.7	14.9	45.11	-126.3	-674.3	232.7	212.9	19.85	11.726		
2,700.0	2,629.4	2,676.6	2,548.9	12.3	15.7	44.50	-134.7	-712.0	246.7	226.0	20.72	11.907		
2,800.0	2,725.7	2,775.6	2,640.1	12.9	16.5	43.95	-143.1	-749.7	260.7	239.1	21.59	12.075		
2,900.0	2,821.9	2,874.6	2,731.2	13.5	17.4	43.46	-151.5	-787.3	274.6	252.2	22.46	12.230		
3,000.0	2,918.1	2,973.6	2,822.4	14.1	18.2	43.01	-159.8	-825.0	288.7	265.3	23.33	12.375		
3,100.0	3,014.4	3,072.5	2,913.6	14.6	19.0	42.61	-168.2	-862.7	302.7	278.5	24.20	12.509		
3,200.0	3,110.6	3,171.5	3,004.7	15.2	19.9	42.24	-176.6	-900.4	316.7	291.7	25.07	12.634		
3,300.0	3,206.8	3,270.5	3,095.9	15.8	20.7	41.91	-185.0	-938.1	330.8	304.8	25.94	12.751		
3,400.0	3,303.1	3,369.5	3,187.0	16.4	21.5	41.60	-193.3	-975.7	344.8	318.0	26.81	12.860		
3,500.0	3,399.3	3,468.5	3,278.2	17.0	22.4	41.31	-201.7	-1,013.4	358.9	331.2	27.69	12.963		
3,600.0	3,495.6	3,567.5	3,369.3	17.6	23.2	41.05	-210.1	-1,051.1	373.0	344.4	28.56	13.060		
3,700.0	3,591.8	3,666.5	3,460.5	18.1	24.0	40.80	-218.5	-1,088.8	387.1	357.6	29.43	13.150		
3,800.0	3,688.0	3,765.5	3,551.6	18.7	24.8	40.58	-226.9	-1,126.5	401.2	370.9	30.31	13.236		
3,900.0	3,784.3	3,864.5	3,642.8	19.3	25.7	40.37	-235.2	-1,164.1	415.3	384.1	31.18	13.317		
4,000.0	3,880.5	3,963.5	3,733.9	19.9	26.5	40.17	-243.6	-1,201.8	429.4	397.3	32.06	13.394		
4,100.0	3,976.7	4,062.4	3,825.1	20.5	27.3	39.98	-252.0	-1,239.5	443.5	410.5	32.93	13.466		
4,200.0	4,073.0	4,161.4	3,916.2	21.1	28.2	39.81	-260.4	-1,277.2	457.6	423.8	33.81	13.535		
4,300.0	4,169.2	4,260.4	4,007.4	21.7	29.0	39.65	-268.7	-1,314.9	471.7	437.0	34.68	13.601		
4,400.0	4,265.4	4,359.4	4,098.6	22.2	29.8	39.49	-277.1	-1,352.5	485.8	450.3	35.56	13.663		
4,500.0	4,361.7	4,458.4	4,189.7	22.8	30.7	39.35	-285.5	-1,390.2	499.9	463.5	36.43	13.722		
4,600.0	4,457.9	4,557.4	4,280.9	23.4	31.5	39.21	-293.9	-1,427.9	514.1	476.8	37.31	13.778		
4,700.0	4,554.2	4,656.4	4,372.0	24.0	32.3	39.08	-302.3	-1,465.6	528.2	490.0	38.19	13.832		
4,800.0	4,650.4	4,755.4	4,463.2	24.6	33.2	38.96	-310.6	-1,503.3	542.3	503.3	39.06	13.884		
4,873.8	4,721.4	4,828.5	4,530.5	25.0	33.8	38.87	-316.8	-1,531.1	552.8	513.1	39.71	13.920		
4,900.0	4,746.7	4,854.4	4,554.3	25.1	34.0	38.88	-319.0	-1,540.9	556.6	516.6	39.93	13.939		

CC - Min centre to center distance or convergent point, SF - min separation factor, ES - min ellipse separation

SRC Aims/GCC Pad Sec.10-T5N-R66W - SRC Aims 23-10D - Wellbore #1 - Plan #2 (9-21-11)													Offset Site Error:	0.0 ft
Survey Program: 0-MWD													Offset Well Error:	0.0 ft
Reference		Offset		Semi Major Axis			Distance				Warning			
Measured Depth (ft)	Vertical Depth (ft)	Measured Depth (ft)	Vertical Depth (ft)	Reference (ft)	Offset (ft)	Highside Toolface (°)	Offset Wellbore Centre +N/-S (ft)	+E/-W (ft)	Between Centres (ft)	Between Ellipses (ft)		Minimum Separation (ft)	Separation Factor	
5,000.0	4,843.6	4,953.0	4,645.1	25.5	34.8	38.81	-327.4	-1,578.5	572.7	532.1	40.62	14.099		
5,100.0	4,941.3	5,051.1	4,735.5	25.9	35.7	38.57	-335.7	-1,615.8	591.6	550.5	41.18	14.367		
5,200.0	5,039.7	5,148.5	4,825.1	26.2	36.5	38.19	-343.9	-1,652.9	613.3	571.6	41.61	14.739		
5,300.0	5,138.7	5,245.1	4,914.1	26.5	37.3	37.70	-352.1	-1,689.7	637.6	595.7	41.91	15.213		
5,400.0	5,238.1	5,340.8	5,002.2	26.7	38.1	37.12	-360.2	-1,726.1	664.8	622.7	42.11	15.789		
5,500.0	5,337.8	5,435.4	5,089.4	26.8	38.9	36.47	-368.2	-1,762.1	694.9	652.7	42.20	16.467		
5,600.0	5,437.7	5,528.9	5,175.5	27.0	39.7	35.77	-376.1	-1,797.7	727.8	685.6	42.20	17.246		
5,662.3	5,500.0	5,586.5	5,228.5	27.0	40.2	-79.06	-381.0	-1,819.6	749.8	707.6	42.17	17.780		
5,700.0	5,537.7	5,621.2	5,260.5	27.1	40.5	-79.49	-383.9	-1,832.9	763.5	721.3	42.11	18.129		
5,800.0	5,637.7	5,713.3	5,345.3	27.2	41.2	-80.57	-391.7	-1,867.9	799.9	757.9	41.99	19.049		
5,900.0	5,737.7	5,805.4	5,430.1	27.2	42.0	-81.56	-399.5	-1,903.0	836.6	794.6	41.92	19.955		
6,000.0	5,837.7	5,897.5	5,514.9	27.3	42.8	-82.47	-407.3	-1,938.0	873.4	831.5	41.90	20.845		
6,100.0	5,937.7	5,998.7	5,608.1	27.4	43.6	-83.38	-415.8	-1,976.4	910.4	868.5	41.90	21.726		
6,200.0	6,037.7	6,133.8	5,734.2	27.5	44.4	-84.40	-426.3	-2,023.6	944.6	902.7	41.87	22.559		
6,300.0	6,137.7	6,273.5	5,867.0	27.6	45.2	-85.23	-435.8	-2,066.4	974.5	932.6	41.93	23.242		
6,400.0	6,237.7	6,417.6	6,005.8	27.7	45.8	-85.90	-444.1	-2,103.7	1,000.0	958.0	42.06	23.776		
6,500.0	6,337.7	6,565.3	6,150.0	27.8	46.4	-86.43	-451.1	-2,134.9	1,020.8	978.6	42.25	24.163		
6,600.0	6,437.7	6,681.2	6,264.1	27.9	46.7	-86.74	-455.5	-2,155.0	1,037.8	995.4	42.47	24.438		
6,700.0	6,537.7	6,779.7	6,361.1	28.0	47.1	-87.00	-459.3	-2,171.7	1,054.6	1,011.9	42.71	24.691		
6,800.0	6,637.7	6,878.2	6,458.1	28.1	47.5	-87.25	-463.0	-2,188.4	1,071.3	1,028.4	42.96	24.936		
6,900.0	6,737.7	6,976.7	6,555.0	28.2	47.9	-87.49	-466.7	-2,205.1	1,088.1	1,044.9	43.23	25.173		
7,000.0	6,837.7	7,075.2	6,652.0	28.3	48.2	-87.72	-470.4	-2,221.8	1,104.9	1,061.4	43.49	25.404		
7,100.0	6,937.7	7,173.6	6,749.0	28.5	48.6	-87.95	-474.1	-2,238.5	1,121.7	1,078.0	43.77	25.629		
7,200.0	7,037.7	7,272.1	6,846.0	28.6	49.0	-88.17	-477.8	-2,255.1	1,138.5	1,094.5	44.05	25.848		
7,300.0	7,137.7	7,370.6	6,943.0	28.7	49.4	-88.38	-481.5	-2,271.8	1,155.4	1,111.1	44.34	26.060		
7,400.0	7,237.7	7,469.1	7,040.0	28.8	49.8	-88.59	-485.3	-2,288.5	1,172.3	1,127.6	44.63	26.267		
7,500.0	7,337.7	7,567.6	7,136.9	28.9	50.1	-88.79	-489.0	-2,305.2	1,189.1	1,144.2	44.93	26.468		
7,600.0	7,437.7	7,666.0	7,233.9	29.0	50.5	-88.99	-492.7	-2,321.9	1,206.0	1,160.8	45.23	26.664		
7,700.0	7,537.7	7,764.5	7,330.9	29.1	50.9	-89.18	-496.4	-2,338.6	1,222.9	1,177.4	45.54	26.854		
7,800.0	7,637.7	7,863.0	7,427.9	29.3	51.3	-89.36	-500.1	-2,355.3	1,239.8	1,194.0	45.85	27.039		
7,900.0	7,737.7	7,961.5	7,524.9	29.4	51.7	-89.55	-503.8	-2,372.0	1,256.8	1,210.6	46.17	27.219		
8,000.0	7,837.7	8,060.0	7,621.9	29.5	52.0	-89.72	-507.5	-2,388.7	1,273.7	1,227.2	46.50	27.394		
8,100.0	7,937.7	8,158.4	7,718.9	29.6	52.4	-89.89	-511.2	-2,405.4	1,290.6	1,243.8	46.82	27.564		
8,127.3	7,965.0	8,185.3	7,745.3	29.6	52.5	-89.94	-512.3	-2,409.9	1,295.3	1,248.4	46.91	27.610		

Company:	Synergy Resources	Local Co-ordinate Reference:	Well SRC Aims 33-10D
Project:	SEC.10-T5N-R66W	TVD Reference:	WELL @ 4872.0ft (Original Well Elev)
Reference Site:	SRC Aims/GCC Pad Sec.10-T5N-R66W	MD Reference:	WELL @ 4872.0ft (Original Well Elev)
Site Error:	0.0ft	North Reference:	True
Reference Well:	SRC Aims 33-10D	Survey Calculation Method:	Minimum Curvature
Well Error:	0.0ft	Output errors are at	2.00 sigma
Reference Wellbore	Wellbore #1	Database:	Landmark
Reference Design:	Plan #2 (9-21-11)	Offset TVD Reference:	Offset Datum

Reference Depths are relative to WELL @ 4872.0ft (Original Well Elev) Coordinates are relative to: SRC Aims 33-10D
 Offset Depths are relative to Offset Datum Coordinate System is US State Plane 1983, Wyoming Western Zone
 Central Meridian is -110.083333 ° Grid Convergence at Surface is: 3.46°



Company:	Synergy Resources	Local Co-ordinate Reference:	Well SRC Aims 33-10D
Project:	SEC.10-T5N-R66W	TVD Reference:	WELL @ 4872.0ft (Original Well Elev)
Reference Site:	SRC Aims/GCC Pad Sec.10-T5N-R66W	MD Reference:	WELL @ 4872.0ft (Original Well Elev)
Site Error:	0.0ft	North Reference:	True
Reference Well:	SRC Aims 33-10D	Survey Calculation Method:	Minimum Curvature
Well Error:	0.0ft	Output errors are at	2.00 sigma
Reference Wellbore	Wellbore #1	Database:	Landmark
Reference Design:	Plan #2 (9-21-11)	Offset TVD Reference:	Offset Datum

Reference Depths are relative to WELL @ 4872.0ft (Original Well Elev) Coordinates are relative to: SRC Aims 33-10D
Offset Depths are relative to Offset Datum Coordinate System is US State Plane 1983, Wyoming Western Zone
Central Meridian is -110.083333 ° Grid Convergence at Surface is: 3.46°

