

# ENSIGN

## Directional

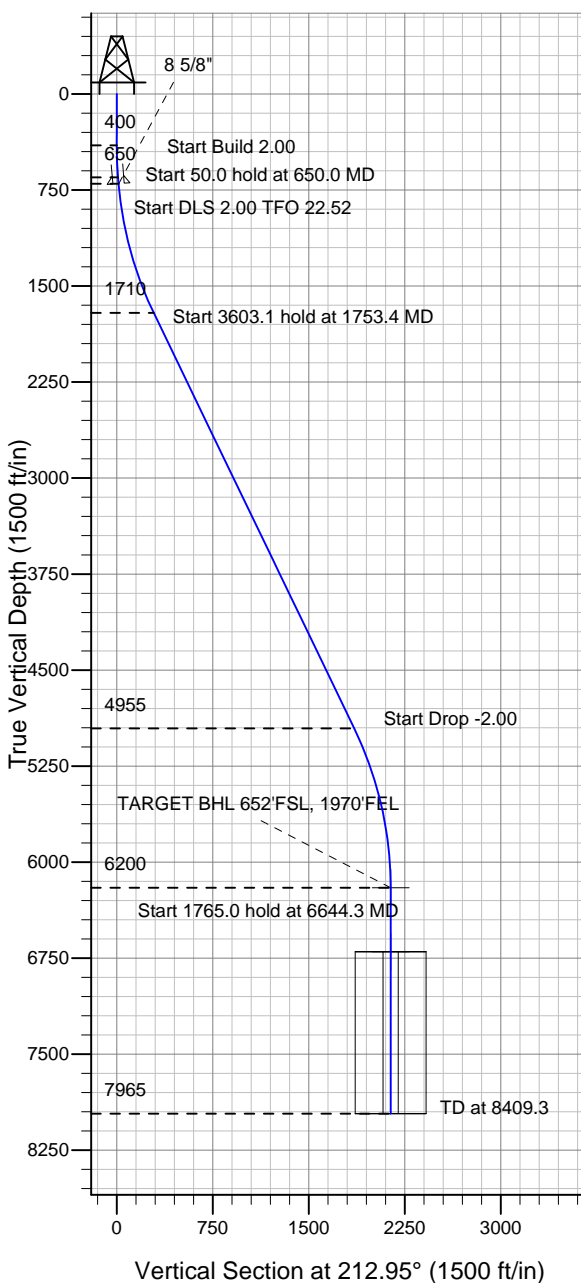
### Well Name: SRC Aims 34-10D

Surface Location: SRC Aims/GCC Pad Sec.10-T5N-R66W  
North American Datum 1983 US State Plane 1983 Wyoming Western Zone

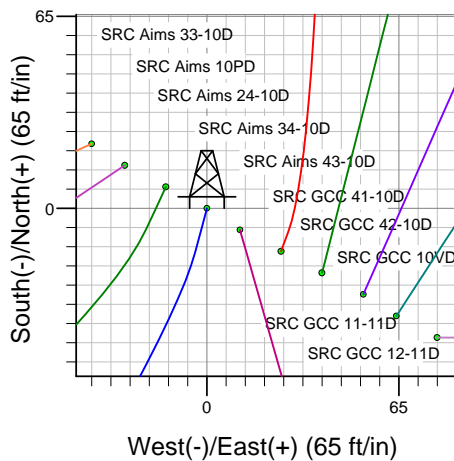
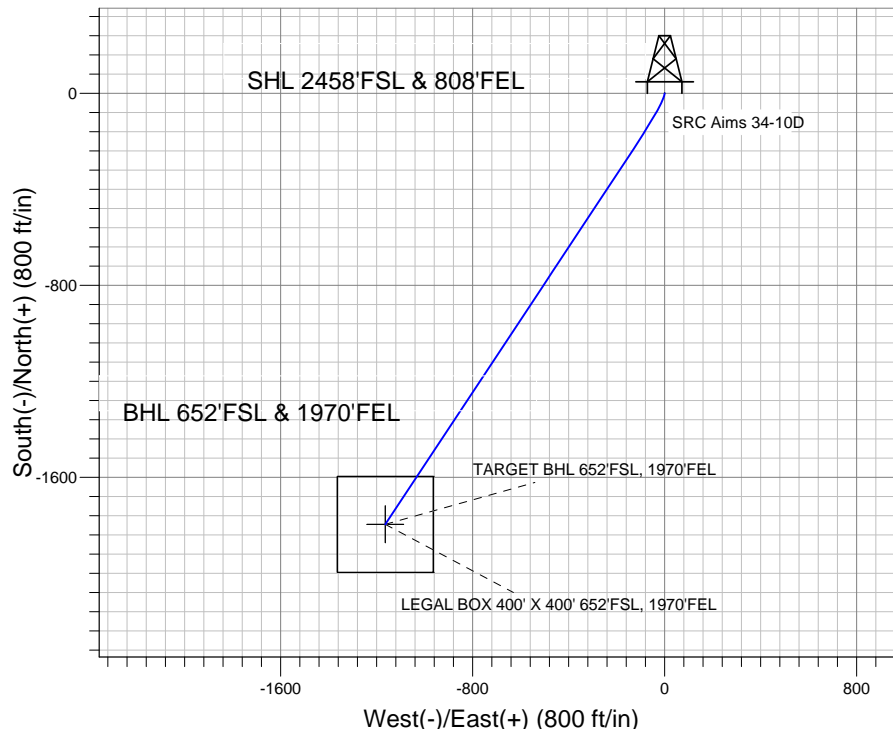
Ground Elevation: 4859.0

+N/-S	+E/-W	Northing	Easting	Latitude	Longitude	Slot
0.0	0.0	341358.12	4107505.36	40.413640	-104.759190	

Original Well Elev WELL @ 4872.0ft (Original Well Elev)



### Synergy Resources



SRC Aims/GCC Pad Sec.10-T5N-R66W  
SRC Aims 34-10D  
Plan #2 (9-21-11)  
12:58, October 05 2011



Azimuths to True North  
Magnetic North: 8.82°

Magnetic Field  
Strength: 53106.6nT  
Dip Angle: 67.05°  
Date: 10/5/2011  
Model: IGRF2010

### WELLBORE TARGET DETAILS (LAT/LONG)

Name	TVD	+N/-S	+E/-W	Latitude	Longitude	Shape
TARGET BHL 652'FSL, 1970'FEL	6200.0	-1796.0	-1164.1	40.408710	-104.763370	Point
LEGAL BOX 400' X 400' 652'FSL, 1970'FEL	6700.0	-1796.0	-1164.1	40.408710	-104.763370	Rectangle (Sides: L400.0 W400.0)

### SECTION DETAILS

Sec	MD	Inc	Azi	TVD	+N/-S	+E/-W	DLeg	TFace	VSec	Target
1	0.0	0.00	0.00	0.0	0.0	0.0	0.00	0.00	0.0	
2	400.0	0.00	0.00	400.0	0.0	0.0	0.00	0.00	0.0	
3	650.0	5.00	195.00	649.7	-10.5	-2.8	2.00	195.00	10.4	
4	700.0	5.00	195.00	699.5	-14.7	-3.9	0.00	0.00	14.5	
5	1753.4	25.75	213.47	1710.0	-252.7	-143.6	2.00	22.52	290.2	
6	5356.5	25.75	213.47	4955.2	-1558.7	-1007.1	0.00	0.00	1855.7	
7	6644.3	0.00	0.00	6200.0	-1796.0	-1164.1	2.00	180.00	2140.3	TARGET BHL 652'FSL, 1970'FEL
8	8409.3	0.00	0.00	7965.0	-1796.0	-1164.1	0.00	0.00	2140.3	



## **Directional**

### **Synergy Resources**

**SEC.10-T5N-R66W**

**SRC Aims/GCC Pad Sec.10-T5N-R66W**

**SRC Aims 34-10D**

**Wellbore #1**

**Plan: Plan #2 (9-21-11)**

### **Standard Planning Report**

**05 October, 2011**

<b>Database:</b>	Landmark	<b>Local Co-ordinate Reference:</b>	Well SRC Aims 34-10D
<b>Company:</b>	Synergy Resources	<b>TVD Reference:</b>	WELL @ 4872.0ft (Original Well Elev)
<b>Project:</b>	SEC.10-T5N-R66W	<b>MD Reference:</b>	WELL @ 4872.0ft (Original Well Elev)
<b>Site:</b>	SRC Aims/GCC Pad Sec.10-T5N-R66W	<b>North Reference:</b>	True
<b>Well:</b>	SRC Aims 34-10D	<b>Survey Calculation Method:</b>	Minimum Curvature
<b>Wellbore:</b>	Wellbore #1		
<b>Design:</b>	Plan #2 (9-21-11)		

<b>Project</b>	SEC.10-T5N-R66W, Weld County, Colorado		
<b>Map System:</b>	US State Plane 1983	<b>System Datum:</b>	Mean Sea Level
<b>Geo Datum:</b>	North American Datum 1983		Using Well Reference Point
<b>Map Zone:</b>	Wyoming Western Zone		Using geodetic scale factor

Site		SRC Aims/GCC Pad Sec.10-T5N-R66W			
Site Position:		Northing:	341,383.04 ft	Latitude:	40.413700
From:	Lat/Long	Easting:	4,107,554.13 ft	Longitude:	-104.759010
Position Uncertainty:	0.0 ft	Slot Radius:	"	Grid Convergence:	3.46 °

Well	SRC Aims 34-10D					
Well Position	+N-S	-21.9 ft	Northing:	341,358.12 ft	Latitude:	40.413640
	+E-W	-50.1 ft	Easting:	4,107,505.36 ft	Longitude:	-104.759190
Position Uncertainty		0.0 ft	Wellhead Elevation:	ft	Ground Level:	4,859.0 ft

<b>Wellbore</b>	Wellbore #1				
<b>Magnetics</b>	<b>Model Name</b>	<b>Sample Date</b>	<b>Declination (°)</b>	<b>Dip Angle (°)</b>	<b>Field Strength (nT)</b>
	IGRF2010	10/5/2011	8.82	67.05	53,107

<b>Design</b>	Plan #2 (9-21-11)			
<b>Audit Notes:</b>				
<b>Version:</b>	<b>Phase:</b>	PROTOTYPE	<b>Tie On Depth:</b>	0.0
<b>Vertical Section:</b>	<b>Depth From (TVD) (ft)</b>	<b>+N/-S (ft)</b>	<b>+E/-W (ft)</b>	<b>Direction (°)</b>
	0.0	0.0	0.0	212.95

<b>Plan Sections</b>										
Measured Depth (ft)	Inclination (°)	Azimuth (°)	Vertical Depth (ft)	+N/-S (ft)	+E/-W (ft)	Dogleg Rate (°/100ft)	Build Rate (°/100ft)	Turn Rate (°/100ft)	TFO (°)	Target
0.0	0.00	0.00	0.0	0.0	0.0	0.00	0.00	0.00	0.00	
400.0	0.00	0.00	400.0	0.0	0.0	0.00	0.00	0.00	0.00	
650.0	5.00	195.00	649.7	-10.5	-2.8	2.00	2.00	0.00	195.00	
700.0	5.00	195.00	699.5	-14.7	-3.9	0.00	0.00	0.00	0.00	
1,753.4	25.75	213.47	1,710.0	-252.7	-143.6	2.00	1.97	1.75	22.52	
5,356.5	25.75	213.47	4,955.2	-1,558.7	-1,007.1	0.00	0.00	0.00	0.00	
6,644.3	0.00	0.00	6,200.0	-1,796.0	-1,164.1	2.00	-2.00	0.00	180.00	TARGET BHL 652'I
8,409.3	0.00	0.00	7,965.0	-1,796.0	-1,164.1	0.00	0.00	0.00	0.00	

<b>Database:</b>	Landmark	<b>Local Co-ordinate Reference:</b>	Well SRC Aims 34-10D
<b>Company:</b>	Synergy Resources	<b>TVD Reference:</b>	WELL @ 4872.0ft (Original Well Elev)
<b>Project:</b>	SEC.10-T5N-R66W	<b>MD Reference:</b>	WELL @ 4872.0ft (Original Well Elev)
<b>Site:</b>	SRC Aims/GCC Pad Sec.10-T5N-R66W	<b>North Reference:</b>	True
<b>Well:</b>	SRC Aims 34-10D	<b>Survey Calculation Method:</b>	Minimum Curvature
<b>Wellbore:</b>	Wellbore #1		
<b>Design:</b>	Plan #2 (9-21-11)		

Planned Survey									
Measured Depth (ft)	Inclination (°)	Azimuth (°)	Vertical Depth (ft)	+N/-S (ft)	+E/-W (ft)	Vertical Section (ft)	Dogleg Rate (°/100ft)	Build Rate (°/100ft)	Turn Rate (°/100ft)
0.0	0.00	0.00	0.0	0.0	0.0	0.0	0.00	0.00	0.00
40.0	0.00	0.00	40.0	0.0	0.0	0.0	0.00	0.00	0.00
80.0	0.00	0.00	80.0	0.0	0.0	0.0	0.00	0.00	0.00
120.0	0.00	0.00	120.0	0.0	0.0	0.0	0.00	0.00	0.00
160.0	0.00	0.00	160.0	0.0	0.0	0.0	0.00	0.00	0.00
200.0	0.00	0.00	200.0	0.0	0.0	0.0	0.00	0.00	0.00
240.0	0.00	0.00	240.0	0.0	0.0	0.0	0.00	0.00	0.00
280.0	0.00	0.00	280.0	0.0	0.0	0.0	0.00	0.00	0.00
320.0	0.00	0.00	320.0	0.0	0.0	0.0	0.00	0.00	0.00
360.0	0.00	0.00	360.0	0.0	0.0	0.0	0.00	0.00	0.00
400.0	0.00	0.00	400.0	0.0	0.0	0.0	0.00	0.00	0.00
440.0	0.80	195.00	440.0	-0.3	-0.1	0.3	2.00	2.00	0.00
480.0	1.60	195.00	480.0	-1.1	-0.3	1.1	2.00	2.00	0.00
520.0	2.40	195.00	520.0	-2.4	-0.7	2.4	2.00	2.00	0.00
560.0	3.20	195.00	559.9	-4.3	-1.2	4.2	2.00	2.00	0.00
600.0	4.00	195.00	599.8	-6.7	-1.8	6.6	2.00	2.00	0.00
640.0	4.80	195.00	639.7	-9.7	-2.6	9.6	2.00	2.00	0.00
650.0	5.00	195.00	649.7	-10.5	-2.8	10.4	2.00	2.00	0.00
680.0	5.00	195.00	679.6	-13.1	-3.5	12.9	0.00	0.00	0.00
700.0	5.00	195.00	699.5	-14.7	-3.9	14.5	0.00	0.00	0.00
700.5	5.01	195.04	700.0	-14.8	-4.0	14.6	2.00	1.85	8.77
8 5/8"									
720.0	5.37	196.64	719.4	-16.5	-4.4	16.2	2.00	1.86	8.17
760.0	6.13	199.31	759.2	-20.3	-5.7	20.1	2.00	1.89	6.69
800.0	6.89	201.40	799.0	-24.5	-7.3	24.5	2.00	1.91	5.22
840.0	7.66	203.07	838.6	-29.2	-9.2	29.5	2.00	1.93	4.17
880.0	8.44	204.43	878.2	-34.3	-11.4	35.0	2.00	1.94	3.41
920.0	9.22	205.57	917.8	-39.9	-14.0	41.1	2.00	1.95	2.84
960.0	10.00	206.53	957.2	-45.9	-17.0	47.8	2.00	1.96	2.40
1,000.0	10.79	207.35	996.5	-52.3	-20.2	54.9	2.00	1.97	2.05
1,040.0	11.58	208.06	1,035.8	-59.2	-23.9	62.7	2.00	1.97	1.78
1,080.0	12.37	208.68	1,074.9	-66.5	-27.8	70.9	2.00	1.97	1.55
1,120.0	13.16	209.23	1,113.9	-74.2	-32.1	79.7	2.00	1.98	1.37
1,160.0	13.95	209.71	1,152.8	-82.4	-36.7	89.1	2.00	1.98	1.22
1,200.0	14.74	210.15	1,191.6	-91.0	-41.6	99.0	2.00	1.98	1.09
1,240.0	15.54	210.54	1,230.2	-100.0	-46.9	109.4	2.00	1.98	0.98
1,280.0	16.33	210.90	1,268.6	-109.4	-52.5	120.4	2.00	1.99	0.89
1,320.0	17.12	211.22	1,306.9	-119.3	-58.5	131.9	2.00	1.99	0.81
1,360.0	17.92	211.51	1,345.1	-129.6	-64.7	144.0	2.00	1.99	0.74
1,400.0	18.71	211.78	1,383.1	-140.3	-71.3	156.5	2.00	1.99	0.68
1,440.0	19.51	212.03	1,420.9	-151.4	-78.3	169.6	2.00	1.99	0.62
1,480.0	20.31	212.26	1,458.5	-162.9	-85.5	183.2	2.00	1.99	0.58
1,520.0	21.10	212.48	1,495.9	-174.9	-93.1	197.4	2.00	1.99	0.53
1,560.0	21.90	212.68	1,533.1	-187.2	-101.0	212.0	2.00	1.99	0.50
1,600.0	22.70	212.86	1,570.1	-200.0	-109.2	227.2	2.00	1.99	0.46
1,640.0	23.49	213.04	1,606.9	-213.2	-117.7	242.9	2.00	1.99	0.43
1,680.0	24.29	213.20	1,643.5	-226.7	-126.6	259.1	2.00	1.99	0.41
1,720.0	25.09	213.35	1,679.8	-240.7	-135.7	275.8	2.00	1.99	0.38
1,753.4	25.75	213.47	1,710.0	-252.7	-143.6	290.2	2.00	1.99	0.36
1,760.0	25.75	213.47	1,715.9	-255.1	-145.2	293.0	0.00	0.00	0.00
1,800.0	25.75	213.47	1,751.9	-269.6	-154.8	310.4	0.00	0.00	0.00
1,840.0	25.75	213.47	1,788.0	-284.1	-164.4	327.8	0.00	0.00	0.00
1,880.0	25.75	213.47	1,824.0	-298.6	-174.0	345.2	0.00	0.00	0.00
1,920.0	25.75	213.47	1,860.0	-313.1	-183.6	362.5	0.00	0.00	0.00

<b>Database:</b>	Landmark	<b>Local Co-ordinate Reference:</b>	Well SRC Aims 34-10D
<b>Company:</b>	Synergy Resources	<b>TVD Reference:</b>	WELL @ 4872.0ft (Original Well Elev)
<b>Project:</b>	SEC.10-T5N-R66W	<b>MD Reference:</b>	WELL @ 4872.0ft (Original Well Elev)
<b>Site:</b>	SRC Aims/GCC Pad Sec.10-T5N-R66W	<b>North Reference:</b>	True
<b>Well:</b>	SRC Aims 34-10D	<b>Survey Calculation Method:</b>	Minimum Curvature
<b>Wellbore:</b>	Wellbore #1		
<b>Design:</b>	Plan #2 (9-21-11)		

Planned Survey									
Measured Depth (ft)	Inclination (°)	Azimuth (°)	Vertical Depth (ft)	+N/-S (ft)	+E/-W (ft)	Vertical Section (ft)	Dogleg Rate (°/100ft)	Build Rate (°/100ft)	Turn Rate (°/100ft)
1,960.0	25.75	213.47	1,896.1	-327.6	-193.1	379.9	0.00	0.00	0.00
2,000.0	25.75	213.47	1,932.1	-342.1	-202.7	397.3	0.00	0.00	0.00
2,040.0	25.75	213.47	1,968.1	-356.6	-212.3	414.7	0.00	0.00	0.00
2,080.0	25.75	213.47	2,004.1	-371.1	-221.9	432.1	0.00	0.00	0.00
2,120.0	25.75	213.47	2,040.2	-385.5	-231.5	449.4	0.00	0.00	0.00
2,160.0	25.75	213.47	2,076.2	-400.0	-241.1	466.8	0.00	0.00	0.00
2,200.0	25.75	213.47	2,112.2	-414.5	-250.7	484.2	0.00	0.00	0.00
2,240.0	25.75	213.47	2,148.2	-429.0	-260.2	501.6	0.00	0.00	0.00
2,280.0	25.75	213.47	2,184.3	-443.5	-269.8	519.0	0.00	0.00	0.00
2,320.0	25.75	213.47	2,220.3	-458.0	-279.4	536.3	0.00	0.00	0.00
2,360.0	25.75	213.47	2,256.3	-472.5	-289.0	553.7	0.00	0.00	0.00
2,400.0	25.75	213.47	2,292.3	-487.0	-298.6	571.1	0.00	0.00	0.00
2,440.0	25.75	213.47	2,328.4	-501.5	-308.2	588.5	0.00	0.00	0.00
2,480.0	25.75	213.47	2,364.4	-516.0	-317.8	605.9	0.00	0.00	0.00
2,520.0	25.75	213.47	2,400.4	-530.5	-327.4	623.2	0.00	0.00	0.00
2,560.0	25.75	213.47	2,436.5	-545.0	-336.9	640.6	0.00	0.00	0.00
2,600.0	25.75	213.47	2,472.5	-559.5	-346.5	658.0	0.00	0.00	0.00
2,640.0	25.75	213.47	2,508.5	-574.0	-356.1	675.4	0.00	0.00	0.00
2,680.0	25.75	213.47	2,544.5	-588.5	-365.7	692.8	0.00	0.00	0.00
2,720.0	25.75	213.47	2,580.6	-603.0	-375.3	710.1	0.00	0.00	0.00
2,760.0	25.75	213.47	2,616.6	-617.5	-384.9	727.5	0.00	0.00	0.00
2,800.0	25.75	213.47	2,652.6	-632.0	-394.5	744.9	0.00	0.00	0.00
2,840.0	25.75	213.47	2,688.6	-646.5	-404.0	762.3	0.00	0.00	0.00
2,880.0	25.75	213.47	2,724.7	-661.0	-413.6	779.7	0.00	0.00	0.00
2,920.0	25.75	213.47	2,760.7	-675.5	-423.2	797.0	0.00	0.00	0.00
2,960.0	25.75	213.47	2,796.7	-690.0	-432.8	814.4	0.00	0.00	0.00
3,000.0	25.75	213.47	2,832.7	-704.5	-442.4	831.8	0.00	0.00	0.00
3,040.0	25.75	213.47	2,868.8	-719.0	-452.0	849.2	0.00	0.00	0.00
3,080.0	25.75	213.47	2,904.8	-733.5	-461.6	866.6	0.00	0.00	0.00
3,120.0	25.75	213.47	2,940.8	-748.0	-471.1	883.9	0.00	0.00	0.00
3,160.0	25.75	213.47	2,976.8	-762.5	-480.7	901.3	0.00	0.00	0.00
3,200.0	25.75	213.47	3,012.9	-777.0	-490.3	918.7	0.00	0.00	0.00
3,240.0	25.75	213.47	3,048.9	-791.5	-499.9	936.1	0.00	0.00	0.00
3,280.0	25.75	213.47	3,084.9	-806.0	-509.5	953.5	0.00	0.00	0.00
3,320.0	25.75	213.47	3,121.0	-820.5	-519.1	970.8	0.00	0.00	0.00
3,360.0	25.75	213.47	3,157.0	-835.0	-528.7	988.2	0.00	0.00	0.00
3,400.0	25.75	213.47	3,193.0	-849.5	-538.2	1,005.6	0.00	0.00	0.00
3,440.0	25.75	213.47	3,229.0	-864.0	-547.8	1,023.0	0.00	0.00	0.00
3,480.0	25.75	213.47	3,265.1	-878.5	-557.4	1,040.4	0.00	0.00	0.00
3,520.0	25.75	213.47	3,301.1	-893.0	-567.0	1,057.7	0.00	0.00	0.00
3,560.0	25.75	213.47	3,337.1	-907.5	-576.6	1,075.1	0.00	0.00	0.00
3,600.0	25.75	213.47	3,373.1	-922.0	-586.2	1,092.5	0.00	0.00	0.00
3,640.0	25.75	213.47	3,409.2	-936.5	-595.8	1,109.9	0.00	0.00	0.00
3,680.0	25.75	213.47	3,445.2	-951.0	-605.3	1,127.3	0.00	0.00	0.00
3,720.0	25.75	213.47	3,481.2	-965.5	-614.9	1,144.6	0.00	0.00	0.00
3,760.0	25.75	213.47	3,517.2	-980.0	-624.5	1,162.0	0.00	0.00	0.00
3,800.0	25.75	213.47	3,553.3	-994.5	-634.1	1,179.4	0.00	0.00	0.00
3,840.0	25.75	213.47	3,589.3	-1,009.0	-643.7	1,196.8	0.00	0.00	0.00
3,880.0	25.75	213.47	3,625.3	-1,023.5	-653.3	1,214.2	0.00	0.00	0.00
3,920.0	25.75	213.47	3,661.4	-1,038.0	-662.9	1,231.5	0.00	0.00	0.00
3,960.0	25.75	213.47	3,697.4	-1,052.5	-672.5	1,248.9	0.00	0.00	0.00
4,000.0	25.75	213.47	3,733.4	-1,067.0	-682.0	1,266.3	0.00	0.00	0.00
4,040.0	25.75	213.47	3,769.4	-1,081.5	-691.6	1,283.7	0.00	0.00	0.00
4,080.0	25.75	213.47	3,805.5	-1,096.0	-701.2	1,301.1	0.00	0.00	0.00

<b>Database:</b>	Landmark	<b>Local Co-ordinate Reference:</b>	Well SRC Aims 34-10D
<b>Company:</b>	Synergy Resources	<b>TVD Reference:</b>	WELL @ 4872.0ft (Original Well Elev)
<b>Project:</b>	SEC.10-T5N-R66W	<b>MD Reference:</b>	WELL @ 4872.0ft (Original Well Elev)
<b>Site:</b>	SRC Aims/GCC Pad Sec.10-T5N-R66W	<b>North Reference:</b>	True
<b>Well:</b>	SRC Aims 34-10D	<b>Survey Calculation Method:</b>	Minimum Curvature
<b>Wellbore:</b>	Wellbore #1		
<b>Design:</b>	Plan #2 (9-21-11)		

Planned Survey									
Measured Depth (ft)	Inclination (°)	Azimuth (°)	Vertical Depth (ft)	+N/-S (ft)	+E/-W (ft)	Vertical Section (ft)	Dogleg Rate (°/100ft)	Build Rate (°/100ft)	Turn Rate (°/100ft)
4,120.0	25.75	213.47	3,841.5	-1,110.5	-710.8	1,318.4	0.00	0.00	0.00
4,160.0	25.75	213.47	3,877.5	-1,125.0	-720.4	1,335.8	0.00	0.00	0.00
4,200.0	25.75	213.47	3,913.5	-1,139.5	-730.0	1,353.2	0.00	0.00	0.00
4,240.0	25.75	213.47	3,949.6	-1,154.0	-739.6	1,370.6	0.00	0.00	0.00
4,280.0	25.75	213.47	3,985.6	-1,168.5	-749.1	1,388.0	0.00	0.00	0.00
4,320.0	25.75	213.47	4,021.6	-1,183.0	-758.7	1,405.3	0.00	0.00	0.00
4,360.0	25.75	213.47	4,057.6	-1,197.4	-768.3	1,422.7	0.00	0.00	0.00
4,400.0	25.75	213.47	4,093.7	-1,211.9	-777.9	1,440.1	0.00	0.00	0.00
4,440.0	25.75	213.47	4,129.7	-1,226.4	-787.5	1,457.5	0.00	0.00	0.00
4,480.0	25.75	213.47	4,165.7	-1,240.9	-797.1	1,474.9	0.00	0.00	0.00
4,520.0	25.75	213.47	4,201.8	-1,255.4	-806.7	1,492.2	0.00	0.00	0.00
4,560.0	25.75	213.47	4,237.8	-1,269.9	-816.2	1,509.6	0.00	0.00	0.00
4,600.0	25.75	213.47	4,273.8	-1,284.4	-825.8	1,527.0	0.00	0.00	0.00
4,640.0	25.75	213.47	4,309.8	-1,298.9	-835.4	1,544.4	0.00	0.00	0.00
4,680.0	25.75	213.47	4,345.9	-1,313.4	-845.0	1,561.8	0.00	0.00	0.00
4,720.0	25.75	213.47	4,381.9	-1,327.9	-854.6	1,579.1	0.00	0.00	0.00
4,760.0	25.75	213.47	4,417.9	-1,342.4	-864.2	1,596.5	0.00	0.00	0.00
4,800.0	25.75	213.47	4,453.9	-1,356.9	-873.8	1,613.9	0.00	0.00	0.00
4,840.0	25.75	213.47	4,490.0	-1,371.4	-883.3	1,631.3	0.00	0.00	0.00
4,880.0	25.75	213.47	4,526.0	-1,385.9	-892.9	1,648.7	0.00	0.00	0.00
4,920.0	25.75	213.47	4,562.0	-1,400.4	-902.5	1,666.0	0.00	0.00	0.00
4,960.0	25.75	213.47	4,598.0	-1,414.9	-912.1	1,683.4	0.00	0.00	0.00
5,000.0	25.75	213.47	4,634.1	-1,429.4	-921.7	1,700.8	0.00	0.00	0.00
5,040.0	25.75	213.47	4,670.1	-1,443.9	-931.3	1,718.2	0.00	0.00	0.00
5,080.0	25.75	213.47	4,706.1	-1,458.4	-940.9	1,735.6	0.00	0.00	0.00
5,120.0	25.75	213.47	4,742.1	-1,472.9	-950.4	1,752.9	0.00	0.00	0.00
5,160.0	25.75	213.47	4,778.2	-1,487.4	-960.0	1,770.3	0.00	0.00	0.00
5,200.0	25.75	213.47	4,814.2	-1,501.9	-969.6	1,787.7	0.00	0.00	0.00
5,240.0	25.75	213.47	4,850.2	-1,516.4	-979.2	1,805.1	0.00	0.00	0.00
5,280.0	25.75	213.47	4,886.3	-1,530.9	-988.8	1,822.5	0.00	0.00	0.00
5,320.0	25.75	213.47	4,922.3	-1,545.4	-998.4	1,839.8	0.00	0.00	0.00
5,356.5	25.75	213.47	4,955.2	-1,558.7	-1,007.1	1,855.7	0.00	0.00	0.00
5,360.0	25.69	213.47	4,958.3	-1,559.9	-1,008.0	1,857.2	2.00	-2.00	0.00
5,400.0	24.89	213.47	4,994.5	-1,574.2	-1,017.4	1,874.3	2.00	-2.00	0.00
5,440.0	24.09	213.47	5,030.9	-1,588.0	-1,026.5	1,890.9	2.00	-2.00	0.00
5,480.0	23.29	213.47	5,067.5	-1,601.4	-1,035.4	1,907.0	2.00	-2.00	0.00
5,520.0	22.49	213.47	5,104.4	-1,614.4	-1,044.0	1,922.5	2.00	-2.00	0.00
5,560.0	21.69	213.47	5,141.4	-1,626.9	-1,052.3	1,937.5	2.00	-2.00	0.00
5,600.0	20.89	213.47	5,178.7	-1,639.0	-1,060.3	1,952.1	2.00	-2.00	0.00
5,640.0	20.09	213.47	5,216.2	-1,650.7	-1,068.0	1,966.1	2.00	-2.00	0.00
5,680.0	19.29	213.47	5,253.8	-1,661.9	-1,075.4	1,979.5	2.00	-2.00	0.00
5,720.0	18.49	213.47	5,291.7	-1,672.7	-1,082.6	1,992.5	2.00	-2.00	0.00
5,760.0	17.69	213.47	5,329.7	-1,683.1	-1,089.4	2,004.9	2.00	-2.00	0.00
5,800.0	16.89	213.47	5,367.9	-1,693.0	-1,096.0	2,016.8	2.00	-2.00	0.00
5,840.0	16.09	213.47	5,406.2	-1,702.5	-1,102.2	2,028.1	2.00	-2.00	0.00
5,880.0	15.29	213.47	5,444.8	-1,711.5	-1,108.2	2,039.0	2.00	-2.00	0.00
5,920.0	14.49	213.47	5,483.4	-1,720.1	-1,113.9	2,049.2	2.00	-2.00	0.00
5,960.0	13.69	213.47	5,522.2	-1,728.2	-1,119.2	2,059.0	2.00	-2.00	0.00
6,000.0	12.89	213.47	5,561.1	-1,735.9	-1,124.3	2,068.2	2.00	-2.00	0.00
6,040.0	12.09	213.47	5,600.2	-1,743.1	-1,129.1	2,076.8	2.00	-2.00	0.00
6,080.0	11.29	213.47	5,639.4	-1,749.8	-1,133.5	2,084.9	2.00	-2.00	0.00
6,120.0	10.49	213.47	5,678.6	-1,756.1	-1,137.7	2,092.5	2.00	-2.00	0.00
6,160.0	9.69	213.47	5,718.0	-1,762.0	-1,141.6	2,099.5	2.00	-2.00	0.00
6,200.0	8.89	213.47	5,757.5	-1,767.4	-1,145.1	2,105.9	2.00	-2.00	0.00

<b>Database:</b>	Landmark	<b>Local Co-ordinate Reference:</b>	Well SRC Aims 34-10D
<b>Company:</b>	Synergy Resources	<b>TVD Reference:</b>	WELL @ 4872.0ft (Original Well Elev)
<b>Project:</b>	SEC.10-T5N-R66W	<b>MD Reference:</b>	WELL @ 4872.0ft (Original Well Elev)
<b>Site:</b>	SRC Aims/GCC Pad Sec.10-T5N-R66W	<b>North Reference:</b>	True
<b>Well:</b>	SRC Aims 34-10D	<b>Survey Calculation Method:</b>	Minimum Curvature
<b>Wellbore:</b>	Wellbore #1		
<b>Design:</b>	Plan #2 (9-21-11)		

Planned Survey										
Measured Depth (ft)	Inclination (°)	Azimuth (°)	Vertical Depth (ft)	+N/-S (ft)	+E/-W (ft)	Vertical Section (ft)	Dogleg Rate (°/100ft)	Build Rate (°/100ft)	Turn Rate (°/100ft)	
6,240.0	8.09	213.47	5,797.1	-1,772.3	-1,148.4	2,111.8	2.00	-2.00	0.00	
6,280.0	7.29	213.47	5,836.7	-1,776.7	-1,151.3	2,117.2	2.00	-2.00	0.00	
6,320.0	6.49	213.47	5,876.4	-1,780.7	-1,154.0	2,122.0	2.00	-2.00	0.00	
6,360.0	5.69	213.47	5,916.2	-1,784.3	-1,156.3	2,126.2	2.00	-2.00	0.00	
6,400.0	4.89	213.47	5,956.0	-1,787.4	-1,158.4	2,129.9	2.00	-2.00	0.00	
6,440.0	4.09	213.47	5,995.9	-1,790.0	-1,160.1	2,133.0	2.00	-2.00	0.00	
6,480.0	3.29	213.47	6,035.8	-1,792.1	-1,161.5	2,135.6	2.00	-2.00	0.00	
6,520.0	2.49	213.47	6,075.8	-1,793.8	-1,162.6	2,137.6	2.00	-2.00	0.00	
6,560.0	1.69	213.47	6,115.7	-1,795.0	-1,163.4	2,139.1	2.00	-2.00	0.00	
6,600.0	0.89	213.47	6,155.7	-1,795.8	-1,163.9	2,140.0	2.00	-2.00	0.00	
6,640.0	0.09	213.47	6,195.7	-1,796.0	-1,164.1	2,140.3	2.00	-2.00	0.00	
6,644.3	0.00	0.00	6,200.0	-1,796.0	-1,164.1	2,140.3	2.00	-2.00	0.00	
TARGET BHL 652'FSL, 1970'FEL										
6,680.0	0.00	0.00	6,235.7	-1,796.0	-1,164.1	2,140.3	0.00	0.00	0.00	
6,720.0	0.00	0.00	6,275.7	-1,796.0	-1,164.1	2,140.3	0.00	0.00	0.00	
6,760.0	0.00	0.00	6,315.7	-1,796.0	-1,164.1	2,140.3	0.00	0.00	0.00	
6,800.0	0.00	0.00	6,355.7	-1,796.0	-1,164.1	2,140.3	0.00	0.00	0.00	
6,840.0	0.00	0.00	6,395.7	-1,796.0	-1,164.1	2,140.3	0.00	0.00	0.00	
6,880.0	0.00	0.00	6,435.7	-1,796.0	-1,164.1	2,140.3	0.00	0.00	0.00	
6,920.0	0.00	0.00	6,475.7	-1,796.0	-1,164.1	2,140.3	0.00	0.00	0.00	
6,960.0	0.00	0.00	6,515.7	-1,796.0	-1,164.1	2,140.3	0.00	0.00	0.00	
7,000.0	0.00	0.00	6,555.7	-1,796.0	-1,164.1	2,140.3	0.00	0.00	0.00	
7,040.0	0.00	0.00	6,595.7	-1,796.0	-1,164.1	2,140.3	0.00	0.00	0.00	
7,080.0	0.00	0.00	6,635.7	-1,796.0	-1,164.1	2,140.3	0.00	0.00	0.00	
7,120.0	0.00	0.00	6,675.7	-1,796.0	-1,164.1	2,140.3	0.00	0.00	0.00	
7,144.3	0.00	0.00	6,700.0	-1,796.0	-1,164.1	2,140.3	0.00	0.00	0.00	
LEGAL BOX 400' X 400' 652'FSL, 1970'FEL										
7,160.0	0.00	0.00	6,715.7	-1,796.0	-1,164.1	2,140.3	0.00	0.00	0.00	
7,200.0	0.00	0.00	6,755.7	-1,796.0	-1,164.1	2,140.3	0.00	0.00	0.00	
7,240.0	0.00	0.00	6,795.7	-1,796.0	-1,164.1	2,140.3	0.00	0.00	0.00	
7,280.0	0.00	0.00	6,835.7	-1,796.0	-1,164.1	2,140.3	0.00	0.00	0.00	
7,320.0	0.00	0.00	6,875.7	-1,796.0	-1,164.1	2,140.3	0.00	0.00	0.00	
7,360.0	0.00	0.00	6,915.7	-1,796.0	-1,164.1	2,140.3	0.00	0.00	0.00	
7,400.0	0.00	0.00	6,955.7	-1,796.0	-1,164.1	2,140.3	0.00	0.00	0.00	
7,440.0	0.00	0.00	6,995.7	-1,796.0	-1,164.1	2,140.3	0.00	0.00	0.00	
7,480.0	0.00	0.00	7,035.7	-1,796.0	-1,164.1	2,140.3	0.00	0.00	0.00	
7,520.0	0.00	0.00	7,075.7	-1,796.0	-1,164.1	2,140.3	0.00	0.00	0.00	
7,560.0	0.00	0.00	7,115.7	-1,796.0	-1,164.1	2,140.3	0.00	0.00	0.00	
7,600.0	0.00	0.00	7,155.7	-1,796.0	-1,164.1	2,140.3	0.00	0.00	0.00	
7,640.0	0.00	0.00	7,195.7	-1,796.0	-1,164.1	2,140.3	0.00	0.00	0.00	
7,680.0	0.00	0.00	7,235.7	-1,796.0	-1,164.1	2,140.3	0.00	0.00	0.00	
7,720.0	0.00	0.00	7,275.7	-1,796.0	-1,164.1	2,140.3	0.00	0.00	0.00	
7,760.0	0.00	0.00	7,315.7	-1,796.0	-1,164.1	2,140.3	0.00	0.00	0.00	
7,800.0	0.00	0.00	7,355.7	-1,796.0	-1,164.1	2,140.3	0.00	0.00	0.00	
7,840.0	0.00	0.00	7,395.7	-1,796.0	-1,164.1	2,140.3	0.00	0.00	0.00	
7,880.0	0.00	0.00	7,435.7	-1,796.0	-1,164.1	2,140.3	0.00	0.00	0.00	
7,920.0	0.00	0.00	7,475.7	-1,796.0	-1,164.1	2,140.3	0.00	0.00	0.00	
7,960.0	0.00	0.00	7,515.7	-1,796.0	-1,164.1	2,140.3	0.00	0.00	0.00	
8,000.0	0.00	0.00	7,555.7	-1,796.0	-1,164.1	2,140.3	0.00	0.00	0.00	
8,040.0	0.00	0.00	7,595.7	-1,796.0	-1,164.1	2,140.3	0.00	0.00	0.00	
8,080.0	0.00	0.00	7,635.7	-1,796.0	-1,164.1	2,140.3	0.00	0.00	0.00	
8,120.0	0.00	0.00	7,675.7	-1,796.0	-1,164.1	2,140.3	0.00	0.00	0.00	
8,160.0	0.00	0.00	7,715.7	-1,796.0	-1,164.1	2,140.3	0.00	0.00	0.00	
8,200.0	0.00	0.00	7,755.7	-1,796.0	-1,164.1	2,140.3	0.00	0.00	0.00	

<b>Database:</b>	Landmark	<b>Local Co-ordinate Reference:</b>	Well SRC Aims 34-10D
<b>Company:</b>	Synergy Resources	<b>TVD Reference:</b>	WELL @ 4872.0ft (Original Well Elev)
<b>Project:</b>	SEC.10-T5N-R66W	<b>MD Reference:</b>	WELL @ 4872.0ft (Original Well Elev)
<b>Site:</b>	SRC Aims/GCC Pad Sec.10-T5N-R66W	<b>North Reference:</b>	True
<b>Well:</b>	SRC Aims 34-10D	<b>Survey Calculation Method:</b>	Minimum Curvature
<b>Wellbore:</b>	Wellbore #1		
<b>Design:</b>	Plan #2 (9-21-11)		

Planned Survey										
Measured Depth (ft)	Inclination (°)	Azimuth (°)	Vertical Depth (ft)	+N/-S (ft)	+E/-W (ft)	Vertical Section (ft)	Dogleg Rate (°/100ft)	Build Rate (°/100ft)	Turn Rate (°/100ft)	
8,240.0	0.00	0.00	7,795.7	-1,796.0	-1,164.1	2,140.3	0.00	0.00	0.00	
8,280.0	0.00	0.00	7,835.7	-1,796.0	-1,164.1	2,140.3	0.00	0.00	0.00	
8,320.0	0.00	0.00	7,875.7	-1,796.0	-1,164.1	2,140.3	0.00	0.00	0.00	
8,360.0	0.00	0.00	7,915.7	-1,796.0	-1,164.1	2,140.3	0.00	0.00	0.00	
8,400.0	0.00	0.00	7,955.7	-1,796.0	-1,164.1	2,140.3	0.00	0.00	0.00	
8,409.3	0.00	0.00	7,965.0	-1,796.0	-1,164.1	2,140.3	0.00	0.00	0.00	

Targets										
Target Name	Dip Angle (°)	Dip Dir. (°)	TVD (ft)	+N/-S (ft)	+E/-W (ft)	Northing (ft)	Easting (ft)	Latitude	Longitude	
- hit/miss target										
- Shape										
TARGET BHL 652'FS	0.00	0.00	6,200.0	-1,796.0	-1,164.1	339,490.61	4,106,449.07	40.408710	-104.763370	
- plan hits target center										
- Point										
LEGAL BOX 400' X 400'	0.00	0.00	6,700.0	-1,796.0	-1,164.1	339,490.63	4,106,449.08	40.408710	-104.763370	
- plan hits target center										
- Rectangle (sides W400.0 H400.0 D1,265.0)										

Casing Points										
Measured Depth (ft)	Vertical Depth (ft)	Name					Casing Diameter (")	Hole Diameter (")		
700.5	700.0	8 5/8"					8-5/8	12-1/4		



# **Directional**

## **Synergy Resources**

**SEC.10-T5N-R66W**

**SRC Aims/GCC Pad Sec.10-T5N-R66W**

**SRC Aims 34-10D**

**Wellbore #1**

**Plan #2 (9-21-11)**

## **Anticollision Report**

**05 October, 2011**



SRC Aims/GCC Pad Sec.10-T5N-R66W - SRC Aims 24-10D - Wellbore #1 - Plan #2 (9-21-11)													Offset Site Error:	0.0 ft
Survey Program: 0-MWD													Offset Well Error:	0.0 ft
Reference		Offset		Semi Major Axis			Distance							
Measured Depth (ft)	Vertical Depth (ft)	Measured Depth (ft)	Vertical Depth (ft)	Reference (ft)	Offset (ft)	Highside Toolface (°)	Offset Wellbore Centre +N/-S (ft)	Offset Wellbore Centre +E/-W (ft)	Between Centres (ft)	Between Ellipses (ft)	Minimum Separation (ft)	Separation Factor	Warning	
1,900.0	1,842.0	1,856.9	1,776.0	7.9	9.6	59.56	-278.5	-348.2	183.5	168.5	15.00	12.237		
2,000.0	1,932.1	1,955.5	1,863.0	8.8	10.6	61.69	-305.5	-385.9	198.8	182.1	16.71	11.897		
2,100.0	2,022.1	2,054.0	1,950.0	9.6	11.6	63.52	-332.6	-423.6	214.3	195.9	18.44	11.621		
2,200.0	2,112.2	2,152.6	2,037.0	10.5	12.5	65.11	-359.6	-461.3	230.0	209.8	20.19	11.393		
2,300.0	2,202.3	2,251.2	2,123.9	11.3	13.5	66.49	-386.6	-499.0	245.9	223.9	21.95	11.204		
2,400.0	2,292.3	2,349.8	2,210.9	12.2	14.5	67.70	-413.6	-536.7	261.9	238.2	23.71	11.044		
2,500.0	2,382.4	2,448.3	2,297.9	13.1	15.4	68.77	-440.6	-574.4	278.0	252.5	25.48	10.908		
2,600.0	2,472.5	2,546.9	2,384.9	13.9	16.4	69.73	-467.6	-612.2	294.1	266.9	27.25	10.791		
2,700.0	2,562.5	2,645.5	2,471.8	14.8	17.4	70.58	-494.7	-649.9	310.4	281.3	29.03	10.690		
2,800.0	2,652.6	2,744.1	2,558.8	15.7	18.4	71.36	-521.7	-687.6	326.7	295.8	30.81	10.602		
2,900.0	2,742.7	2,842.6	2,645.8	16.5	19.3	72.05	-548.7	-725.3	343.0	310.4	32.59	10.525		
3,000.0	2,832.7	2,941.2	2,732.8	17.4	20.3	72.69	-575.7	-763.0	359.4	325.0	34.37	10.456		
3,100.0	2,922.8	3,039.8	2,819.7	18.3	21.3	73.27	-602.7	-800.7	375.8	339.7	36.16	10.395		
3,200.0	3,012.9	3,138.3	2,906.7	19.1	22.3	73.80	-629.7	-838.4	392.3	354.4	37.94	10.340		
3,300.0	3,102.9	3,236.9	2,993.7	20.0	23.2	74.29	-656.8	-876.1	408.8	369.1	39.72	10.291		
3,400.0	3,193.0	3,335.5	3,080.7	20.9	24.2	74.74	-683.8	-913.8	425.3	383.8	41.51	10.247		
3,500.0	3,283.1	3,434.1	3,167.6	21.8	25.2	75.15	-710.8	-951.5	441.9	398.6	43.29	10.207		
3,600.0	3,373.1	3,532.6	3,254.6	22.6	26.2	75.54	-737.8	-989.2	458.5	413.4	45.08	10.170		
3,700.0	3,463.2	3,631.2	3,341.6	23.5	27.2	75.90	-764.8	-1,026.9	475.0	428.2	46.87	10.136		
3,800.0	3,553.3	3,729.8	3,428.6	24.4	28.1	76.23	-791.8	-1,064.6	491.7	443.0	48.65	10.106		
3,900.0	3,643.3	3,828.3	3,515.5	25.3	29.1	76.55	-818.9	-1,102.3	508.3	457.8	50.44	10.077		
4,000.0	3,733.4	3,926.9	3,602.5	26.1	30.1	76.84	-845.9	-1,140.1	524.9	472.7	52.22	10.051		
4,100.0	3,823.5	4,025.5	3,689.5	27.0	31.1	77.11	-872.9	-1,177.8	541.6	487.6	54.01	10.024		
4,200.0	3,913.5	4,124.1	3,776.5	27.9	32.1	77.37	-899.9	-1,215.5	558.2	502.4	55.80	10.004		
4,300.0	4,003.6	4,222.6	3,863.4	28.8	33.0	77.62	-926.9	-1,253.2	574.9	517.3	57.58	9.984		
4,400.0	4,093.7	4,321.2	3,950.4	29.6	34.0	77.85	-953.9	-1,290.9	591.6	532.2	59.37	9.964		

<b>Company:</b>	Synergy Resources	<b>Local Co-ordinate Reference:</b>	Well SRC Aims 34-10D
<b>Project:</b>	SEC.10-T5N-R66W	<b>TVD Reference:</b>	WELL @ 4872.0ft (Original Well Elev)
<b>Reference Site:</b>	SRC Aims/GCC Pad Sec.10-T5N-R66W	<b>MD Reference:</b>	WELL @ 4872.0ft (Original Well Elev)
<b>Site Error:</b>	0.0ft	<b>North Reference:</b>	True
<b>Reference Well:</b>	SRC Aims 34-10D	<b>Survey Calculation Method:</b>	Minimum Curvature
<b>Well Error:</b>	0.0ft	<b>Output errors are at</b>	2.00 sigma
<b>Reference Wellbore</b>	Wellbore #1	<b>Database:</b>	Landmark
<b>Reference Design:</b>	Plan #2 (9-21-11)	<b>Offset TVD Reference:</b>	Offset Datum

<b>Offset Design</b>												<b>Offset Site Error:</b>	0.0 ft
SRC Aims/GCC Pad Sec.10-T5N-R66W - SRC Aims 24-10D - Wellbore #1 - Plan #2 (9-21-11)												<b>Offset Well Error:</b>	0.0 ft
Survey Program: 0-MWD													
Reference		Offset		Semi Major Axis			Distance						
Measured Depth (ft)	Vertical Depth (ft)	Measured Depth (ft)	Vertical Depth (ft)	Reference (ft)	Offset (ft)	Highside Toolface (°)	Offset Wellbore Centre +N/-S (ft)	+E/-W (ft)	Between Centres (ft)	Between Ellipses (ft)	Minimum Separation (ft)	Separation Factor	Warning
6,900.0	6,455.7	6,894.4	6,250.3	42.8	57.2	-80.55	-1,620.2	-2,220.8	1,090.6	1,006.5	84.06	12.974	
7,000.0	6,555.7	7,028.9	6,380.9	42.9	57.7	-81.74	-1,638.9	-2,246.8	1,107.8	1,024.2	83.60	13.251	
7,100.0	6,655.7	7,161.6	6,511.2	42.9	58.1	-82.65	-1,653.7	-2,267.6	1,121.9	1,038.6	83.28	13.471	
7,200.0	6,755.7	7,260.1	6,608.1	43.0	58.5	-83.25	-1,663.7	-2,281.5	1,134.7	1,051.6	83.14	13.649	
7,300.0	6,855.7	7,358.6	6,705.1	43.0	58.8	-83.83	-1,673.7	-2,295.4	1,147.7	1,064.7	83.02	13.825	
7,400.0	6,955.7	7,457.0	6,802.1	43.1	59.2	-84.39	-1,683.6	-2,309.3	1,160.8	1,077.9	82.90	14.002	
7,500.0	7,055.7	7,555.5	6,899.1	43.2	59.6	-84.95	-1,693.6	-2,323.2	1,174.0	1,091.2	82.79	14.181	
7,600.0	7,155.7	7,654.0	6,996.1	43.2	59.9	-85.49	-1,703.5	-2,337.1	1,187.3	1,104.6	82.68	14.360	
7,700.0	7,255.7	7,752.5	7,093.1	43.3	60.3	-86.02	-1,713.5	-2,351.0	1,200.7	1,118.2	82.58	14.539	
7,800.0	7,355.7	7,851.0	7,190.0	43.4	60.7	-86.54	-1,723.5	-2,364.9	1,214.2	1,131.8	82.49	14.720	
7,900.0	7,455.7	7,949.4	7,287.0	43.4	61.1	-87.05	-1,733.4	-2,378.8	1,227.9	1,145.5	82.40	14.901	
8,000.0	7,555.7	8,047.9	7,384.0	43.5	61.4	-87.55	-1,743.4	-2,392.7	1,241.6	1,159.2	82.32	15.082	
8,100.0	7,655.7	8,146.4	7,481.0	43.6	61.8	-88.03	-1,753.3	-2,406.6	1,255.4	1,173.1	82.25	15.264	
8,200.0	7,755.7	8,244.9	7,578.0	43.7	62.2	-88.51	-1,763.3	-2,420.5	1,269.2	1,187.1	82.18	15.445	
8,300.0	7,855.7	8,343.4	7,675.0	43.7	62.6	-88.97	-1,773.3	-2,434.4	1,283.2	1,201.1	82.11	15.627	
8,409.3	7,965.0	8,451.0	7,781.0	43.8	63.0	-89.47	-1,784.1	-2,449.6	1,298.6	1,216.5	82.05	15.826	

SRC Aims/GCC Pad Sec.10-T5N-R66W - SRC Aims 43-10D - Wellbore #1 - Plan #2 (9-21-11)													Offset Site Error:	0.0 ft	
Survey Program: 0-MWD														Offset Well Error:	0.0 ft
Reference		Offset		Semi Major Axis			Distance								
Measured Depth	Vertical Depth	Measured Depth	Vertical Depth	Reference	Offset	Highside Toolface	Offset Wellbore Centre		Between Centres	Between Ellipses	Minimum Separation	Separation Factor	Warning		
(ft)	(ft)	(ft)	(ft)	(ft)	(ft)	(°)	+N/-S (ft)	+E/-W (ft)	(ft)	(ft)	(ft)				
0.0	0.0	0.0	0.0	0.0	0.0	123.00	-7.3	11.2	13.4	13.4	0.00	N/A			
100.0	100.0	99.0	99.0	0.1	0.1	123.00	-7.3	11.2	13.4	13.1	0.22	59.728			
200.0	200.0	199.0	199.0	0.3	0.3	123.00	-7.3	11.2	13.4	12.7	0.67	19.876			
300.0	300.0	299.0	299.0	0.6	0.6	123.00	-7.3	11.2	13.4	12.2	1.12	11.910 CC, ES			
400.0	400.0	398.6	398.6	0.8	0.8	127.35	-8.9	11.7	14.7	13.1	1.55	9.500			
500.0	500.0	498.1	497.9	1.0	1.0	-62.95	-13.9	13.1	18.2	16.3	1.94	9.396 SF			
600.0	599.8	597.3	596.8	1.2	1.2	-63.05	-22.1	15.4	23.2	20.8	2.35	9.883			
650.0	649.7	646.9	646.0	1.3	1.3	-64.10	-27.4	17.0	26.2	23.6	2.57	10.186			
700.0	699.5	696.4	695.1	1.4	1.5	-64.81	-33.6	18.7	29.7	26.9	2.80	10.605			
800.0	799.0	795.0	792.5	1.6	1.8	-72.38	-48.3	22.9	38.8	35.5	3.31	11.728			
900.0	898.0	894.3	890.3	1.9	2.1	-79.32	-65.0	27.7	49.5	45.7	3.89	12.735			
1,000.0	996.5	993.5	988.0	2.3	2.5	-86.96	-81.6	32.4	60.8	56.2	4.56	13.326			
1,100.0	1,094.4	1,092.4	1,085.4	2.7	2.9	-94.79	-98.3	37.2	73.1	67.8	5.32	13.746			
1,200.0	1,191.6	1,191.0	1,182.4	3.1	3.3	-102.43	-114.8	41.9	87.3	81.1	6.15	14.193			
1,300.0	1,287.8	1,289.0	1,278.9	3.6	3.6	-109.58	-131.3	46.6	103.8	96.8	7.02	14.786			
1,400.0	1,383.1	1,386.4	1,374.8	4.2	4.0	-116.06	-147.7	51.3	123.1	115.2	7.90	15.577			
1,500.0	1,477.2	1,483.0	1,470.0	4.8	4.4	-121.80	-163.9	56.0	145.4	136.6	8.77	16.573			
1,600.0	1,570.1	1,578.8	1,564.2	5.5	4.8	-126.80	-180.0	60.6	171.0	161.4	9.63	17.757			
1,700.0	1,661.7	1,673.5	1,657.5	6.3	5.2	-131.12	-196.0	65.1	199.8	189.4	10.46	19.104			
1,753.4	1,710.0	1,723.7	1,706.9	6.7	5.4	-133.17	-204.4	67.5	216.6	205.7	10.89	19.882			
1,800.0	1,751.9	1,767.3	1,749.9	7.1	5.5	-134.85	-211.7	69.6	231.7	220.5	11.28	20.541			
1,900.0	1,842.0	1,860.9	1,842.1	7.9	5.9	-137.79	-227.5	74.1	264.7	252.6	12.10	21.870			
2,000.0	1,932.1	1,954.6	1,934.2	8.8	6.3	-140.09	-243.2	78.6	298.2	285.3	12.92	23.080			
2,100.0	2,022.1	2,048.2	2,026.4	9.6	6.7	-141.93	-258.9	83.1	332.0	318.3	13.73	24.175			
2,200.0	2,112.2	2,141.8	2,118.6	10.5	7.1	-143.43	-274.7	87.6	366.1	351.6	14.55	25.166			
2,300.0	2,202.3	2,235.4	2,210.8	11.3	7.4	-144.67	-290.4	92.1	400.4	385.0	15.36	26.064			
2,400.0	2,292.3	2,329.0	2,303.0	12.2	7.8	-145.72	-306.2	96.6	434.8	418.6	16.17	26.879			
2,500.0	2,382.4	2,4													

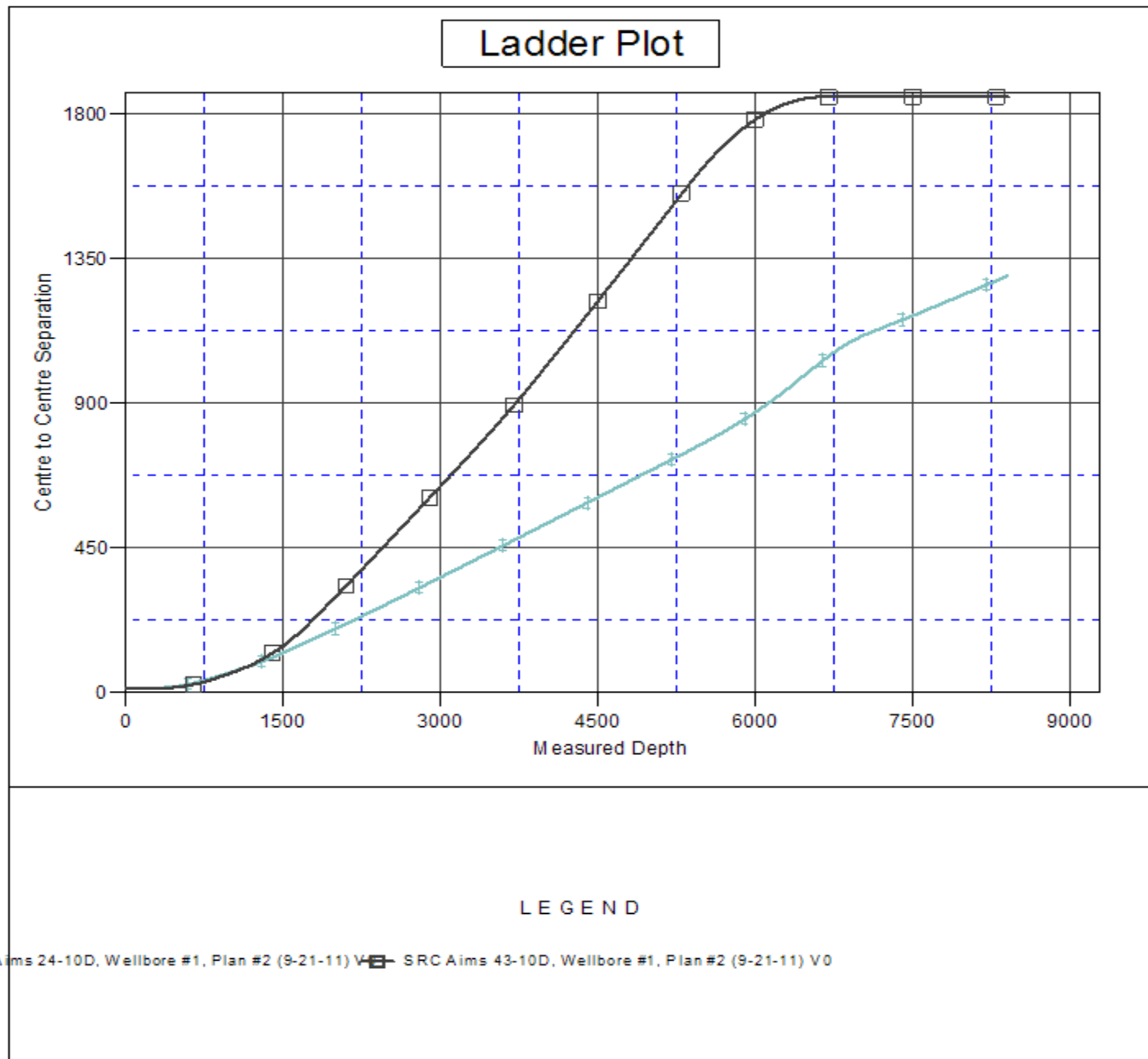
<b>Company:</b>	Synergy Resources	<b>Local Co-ordinate Reference:</b>	Well SRC Aims 34-10D
<b>Project:</b>	SEC.10-T5N-R66W	<b>TVD Reference:</b>	WELL @ 4872.0ft (Original Well Elev)
<b>Reference Site:</b>	SRC Aims/GCC Pad Sec.10-T5N-R66W	<b>MD Reference:</b>	WELL @ 4872.0ft (Original Well Elev)
<b>Site Error:</b>	0.0ft	<b>North Reference:</b>	True
<b>Reference Well:</b>	SRC Aims 34-10D	<b>Survey Calculation Method:</b>	Minimum Curvature
<b>Well Error:</b>	0.0ft	<b>Output errors are at</b>	2.00 sigma
<b>Reference Wellbore</b>	Wellbore #1	<b>Database:</b>	Landmark
<b>Reference Design:</b>	Plan #2 (9-21-11)	<b>Offset TVD Reference:</b>	Offset Datum

Offset Design												Offset Site Error:	0.0ft
SRC Aims/GCC Pad Sec.10-T5N-R66W - SRC Aims 43-10D - Wellbore #1 - Plan #2 (9-21-11)												Offset Well Error:	0.0ft
Survey Program: 0-MWD													
Reference		Offset		Semi Major Axis			Distance						
Measured Depth (ft)	Vertical Depth (ft)	Measured Depth (ft)	Vertical Depth (ft)	Reference (ft)	Offset (ft)	Highside Toolface (°)	Offset Wellbore Centre +N/-S (ft)	+E/-W (ft)	Between Centres (ft)	Between Ellipses (ft)	Minimum Separation (ft)	Separation Factor	Warning
5,000.0	4,634.1	4,674.2	4,633.1	34.9	13.5	-163.37	-484.5	147.5	1,426.9	1,396.2	30.71	46.457	
5,100.0	4,724.1	4,764.3	4,723.1	35.8	13.6	-163.85	-484.5	147.5	1,468.9	1,437.8	31.14	47.174	
5,200.0	4,814.2	4,854.3	4,813.2	36.6	13.7	-164.30	-484.5	147.5	1,511.0	1,479.4	31.57	47.864	
5,300.0	4,904.3	4,944.4	4,903.3	37.5	13.8	-164.73	-484.5	147.5	1,553.2	1,521.2	32.00	48.531	
5,356.5	4,955.2	4,995.3	4,954.2	38.0	13.9	-164.97	-484.5	147.5	1,577.0	1,544.8	32.25	48.897	
5,400.0	4,994.5	5,034.6	4,993.5	38.3	14.0	-165.24	-484.5	147.5	1,595.1	1,562.6	32.47	49.123	
5,500.0	5,085.9	5,126.0	5,084.9	38.9	14.1	-165.81	-484.5	147.5	1,634.5	1,601.6	32.94	49.627	
5,600.0	5,178.7	5,218.8	5,177.7	39.5	14.3	-166.31	-484.5	147.5	1,670.8	1,637.5	33.38	50.052	
5,700.0	5,272.7	5,312.8	5,271.7	40.0	14.4	-166.74	-484.5	147.5	1,704.0	1,670.2	33.81	50.407	
5,800.0	5,367.9	5,408.0	5,366.9	40.5	14.6	-167.12	-484.5	147.5	1,734.0	1,699.8	34.20	50.700	
5,900.0	5,464.1	5,504.2	5,463.1	40.9	14.7	-167.44	-484.5	147.5	1,760.8	1,726.2	34.57	50.938	
6,000.0	5,561.1	5,601.3	5,560.1	41.3	14.9	-167.71	-484.5	147.5	1,784.2	1,749.3	34.90	51.125	
6,100.0	5,659.0	5,699.1	5,658.0	41.6	15.0	-167.93	-484.5	147.5	1,804.4	1,769.2	35.20	51.266	
6,200.0	5,757.5	5,797.6	5,756.5	41.9	15.2	-168.12	-484.5	147.5	1,821.2	1,785.7	35.46	51.365	
6,300.0	5,856.5	5,896.7	5,855.5	42.2	15.3	-168.26	-484.5	147.5	1,834.6	1,798.9	35.68	51.423	
6,400.0	5,956.0	5,996.1	5,955.0	42.4	15.5	-168.36	-484.5	147.5	1,844.7	1,808.8	35.86	51.443	
6,500.0	6,055.8	6,095.9	6,054.8	42.5	15.7	-168.43	-484.5	147.5	1,851.3	1,815.3	36.00	51.426	
6,600.0	6,155.7	6,195.8	6,154.7	42.6	15.8	-168.47	-484.5	147.5	1,854.5	1,818.4	36.10	51.371	
6,644.3	6,200.0	6,240.1	6,199.0	42.6	15.9	45.00	-484.5	147.5	1,854.9	1,818.7	36.14	51.329	
6,700.0	6,255.7	6,295.8	6,254.7	42.7	16.0	45.00	-484.5	147.5	1,854.9	1,818.5	36.30	51.094	
6,800.0	6,355.7	6,395.8	6,354.7	42.7	16.2	45.00	-484.5	147.5	1,854.9	1,818.3	36.60	50.686	
6,900.0	6,455.7	6,495.8	6,454.7	42.8	16.3	45.00	-484.5	147.5	1,854.9	1,818.0	36.89	50.281	
7,000.0	6,555.7	6,595.8	6,554.7	42.9	16.5	45.00	-484.5	147.5	1,854.9	1,817.7	37.19	49.878	
7,100.0	6,655.7	6,695.8	6,654.7	42.9	16.7	45.00	-484.5	147.5	1,854.9	1,817.4	37.49	49.478	
7,200.0	6,755.7	6,795.8	6,754.7	43.0	16.9	45.00	-484.5	147.5	1,854.9	1,817.1	37.79	49.080	
7,300.0	6,855.7	6,895.8	6,854.7	43.0	17.0	45.00	-484.5	147.5	1,854.9	1,816.8	38.10	48.686	
7,400.0	6,955.7	6,995.8	6,954.7	43.1	17.2	45.00	-484.5	147.5	1,854.9	1,816.4	38.41	48.294	
7,500.0	7,055.7	7,095.8	7,054.7	43.2	17.4	45.00	-484.5	147.5	1,854.9	1,816.1	38.72	47.906	
7,600.0	7,155.7	7,195.8	7,154.7	43.2	17.6	45.00	-484.5	147.5	1,854.9	1,815.8	39.03	47.520	
7,700.0	7,255.7	7,295.8	7,254.7	43.3	17.8	45.00	-484.5	147.5	1,854.9	1,815.5	39.35	47.138	
7,800.0	7,355.7	7,395.8	7,354.7	43.4	17.9	45.00	-484.5	147.5	1,854.9	1,815.2	39.67	46.759	
7,900.0	7,455.7	7,495.8	7,454.7	43.4	18.1	45.00	-484.5	147.5	1,854.9	1,814.9	39.99	46.384	
8,000.0	7,555.7	7,595.8	7,554.7	43.5	18.3	45.00	-484.5	147.5	1,854.9	1,814.5	40.31	46.011	
8,100.0	7,655.7	7,695.8	7,654.7	43.6	18.5	45.00	-484.5	147.5	1,854.9	1,814.2	40.64	45.643	
8,200.0	7,755.7	7,795.8	7,754.7	43.7	18.7	45.00	-484.5	147.5	1,854.9	1,813.9	40.97	45.277	
8,300.0	7,855.7	7,895.8	7,854.7	43.7	18.9	45.00	-484.5	147.5	1,854.9	1,813.6	41.30	44.915	
8,409.3	7,965.0	8,005.1	7,964.0	43.8	19.1	45.00	-484.5	147.5	1,854.9	1,813.2	41.66	44.524	

**Company:** Synergy Resources  
**Project:** SEC.10-T5N-R66W  
**Reference Site:** SRC Aims/GCC Pad Sec.10-T5N-R66W  
**Site Error:** 0.0ft  
**Reference Well:** SRC Aims 34-10D  
**Well Error:** 0.0ft  
**Reference Wellbore:** Wellbore #1  
**Reference Design:** Plan #2 (9-21-11)

**Local Co-ordinate Reference:** Well SRC Aims 34-10D  
**TVD Reference:** WELL @ 4872.0ft (Original Well Elev)  
**MD Reference:** WELL @ 4872.0ft (Original Well Elev)  
**North Reference:** True  
**Survey Calculation Method:** Minimum Curvature  
**Output errors are at** 2.00 sigma  
**Database:** Landmark  
**Offset TVD Reference:** Offset Datum

Reference Depths are relative to WELL @ 4872.0ft (Original Well Elev) Coordinates are relative to: SRC Aims 34-10D  
Offset Depths are relative to Offset Datum  
Coordinate System is US State Plane 1983, Wyoming Western Zone  
Central Meridian is -110.083333 °  
Grid Convergence at Surface is: 3.46°



<b>Company:</b>	Synergy Resources	<b>Local Co-ordinate Reference:</b>	Well SRC Aims 34-10D
<b>Project:</b>	SEC.10-T5N-R66W	<b>TVD Reference:</b>	WELL @ 4872.0ft (Original Well Elev)
<b>Reference Site:</b>	SRC Aims/GCC Pad Sec.10-T5N-R66W	<b>MD Reference:</b>	WELL @ 4872.0ft (Original Well Elev)
<b>Site Error:</b>	0.0ft	<b>North Reference:</b>	True
<b>Reference Well:</b>	SRC Aims 34-10D	<b>Survey Calculation Method:</b>	Minimum Curvature
<b>Well Error:</b>	0.0ft	<b>Output errors are at</b>	2.00 sigma
<b>Reference Wellbore</b>	Wellbore #1	<b>Database:</b>	Landmark
<b>Reference Design:</b>	Plan #2 (9-21-11)	<b>Offset TVD Reference:</b>	Offset Datum

Reference Depths are relative to WELL @ 4872.0ft (Original Well Elev) Coordinates are relative to: SRC Aims 34-10D  
Offset Depths are relative to Offset Datum Coordinate System is US State Plane 1983, Wyoming Western Zone  
Central Meridian is -110.083333 ° Grid Convergence at Surface is: 3.46°

