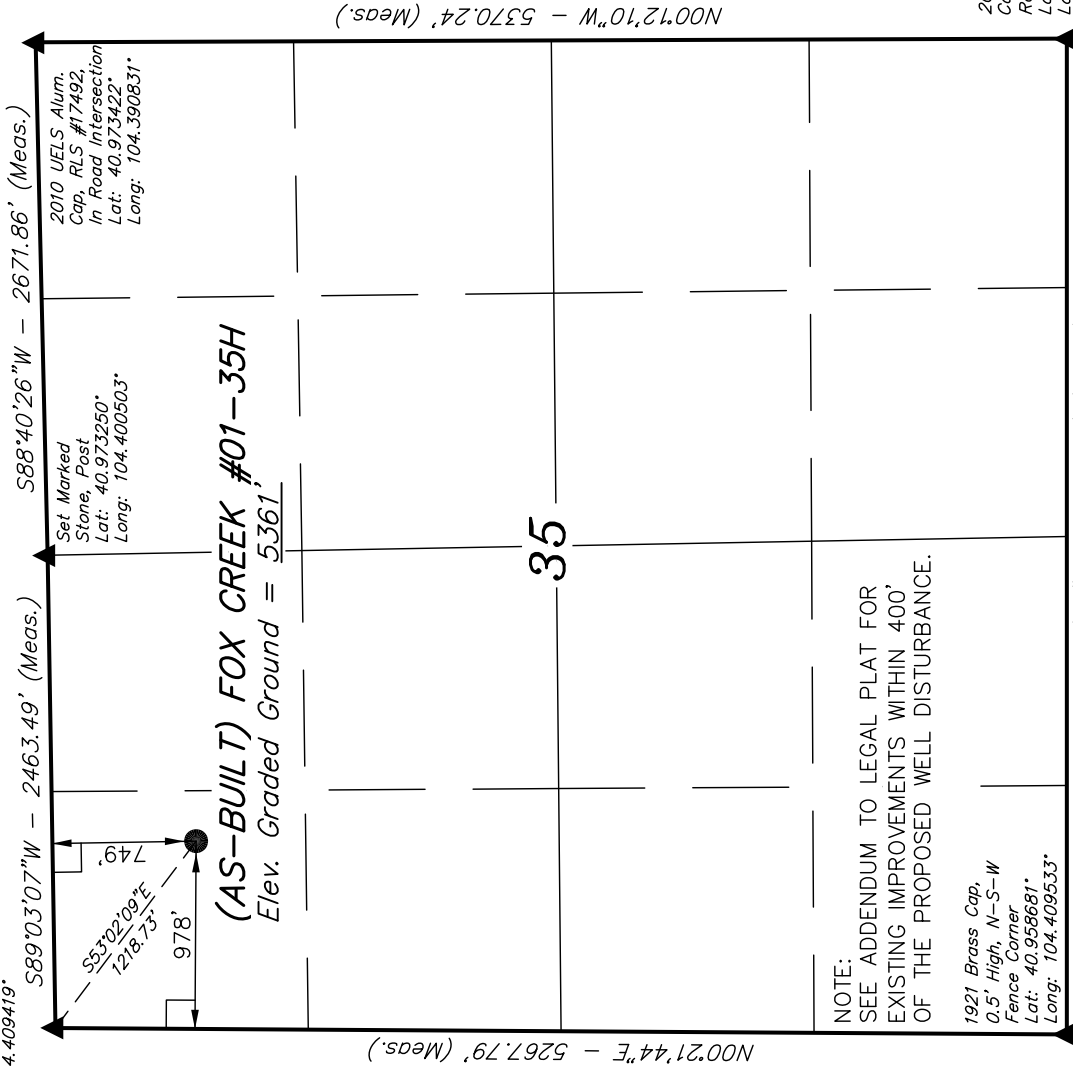


2008 Private Alum. Cap.  
PLS #36073, 0.5' Below  
Ground, Old Buried Stone,  
Wood Post  
Lat: 40.973136°  
Long: 104.409419°

T12N, R63W, 6th P.M.



N00°21'44"E - 5267.79' (Meas.)

S89°59'57"W - 5186.59' (Meas.)

N00°12'10"W - 5370.24' (Meas.)

EOG RESOURCES, INC.

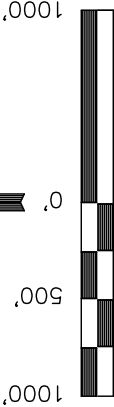
Well location, (AS-BUILT) FOX CREEK #01-35H, located as shown in the NW 1/4 NW 1/4 of Section 35, T12N, R63W, 6th P.M., Weld County, Colorado.

BASIS OF ELEVATION

SPOT ELEVATION AT THE NORTHEAST CORNER OF SECTION 1, T11N, R63W, 6th P.M. TAKEN FROM THE HEREFORD, QUADRANGLE, COLORADO, WELD COUNTY, 7.5 MINUTE QUAD (TOPOGRAPHIC MAP) PUBLISHED BY THE UNITED STATES DEPARTMENT OF THE INTERIOR, GEOLOGICAL SURVEY. SAID ELEVATION IS MARKED AS BEING 5352 FEET.

BASIS OF BEARINGS

BASIS OF BEARINGS IS A G.P.S. OBSERVATION.



SCALE

CERTIFICATE

THIS IS TO CERTIFY THAT THE ABOVE PLAT WAS PREPARED FROM FIELD NOTES OF ACTUAL SURVEYS MADE BY ME OR UNDER MY SUPERVISION AND THAT THE SAME ARE TRUE AND CORRECT TO THE BEST OF MY KNOWLEDGE AND BELIEF.

2009 U.E.L.S. Alum.  
Cap. Set in Gravel  
Road 4" Deep  
Lat: 40.956686°  
Long: 104.390758°

REV: 08-31-11 J.J.

UNTAH ENGINEERING & LAND SURVEYING

85 SOUTH 200 EAST - VERNAL, UTAH 84078  
(435) 789-1017

SCALE 1" = 1000' DATE SURVEYED: 01-14-10 DATE DRAWN: 01-20-10

PARTY B.H. Z.L. D.R.B. REFERENCES G.L.O. PLAT

WEATHER COLD FILE EOG RESOURCES, INC.

LEGEND:

— = 90° SYMBOL

● = PROPOSED WELL HEAD.

▲ = SECTION CORNERS LOCATED.