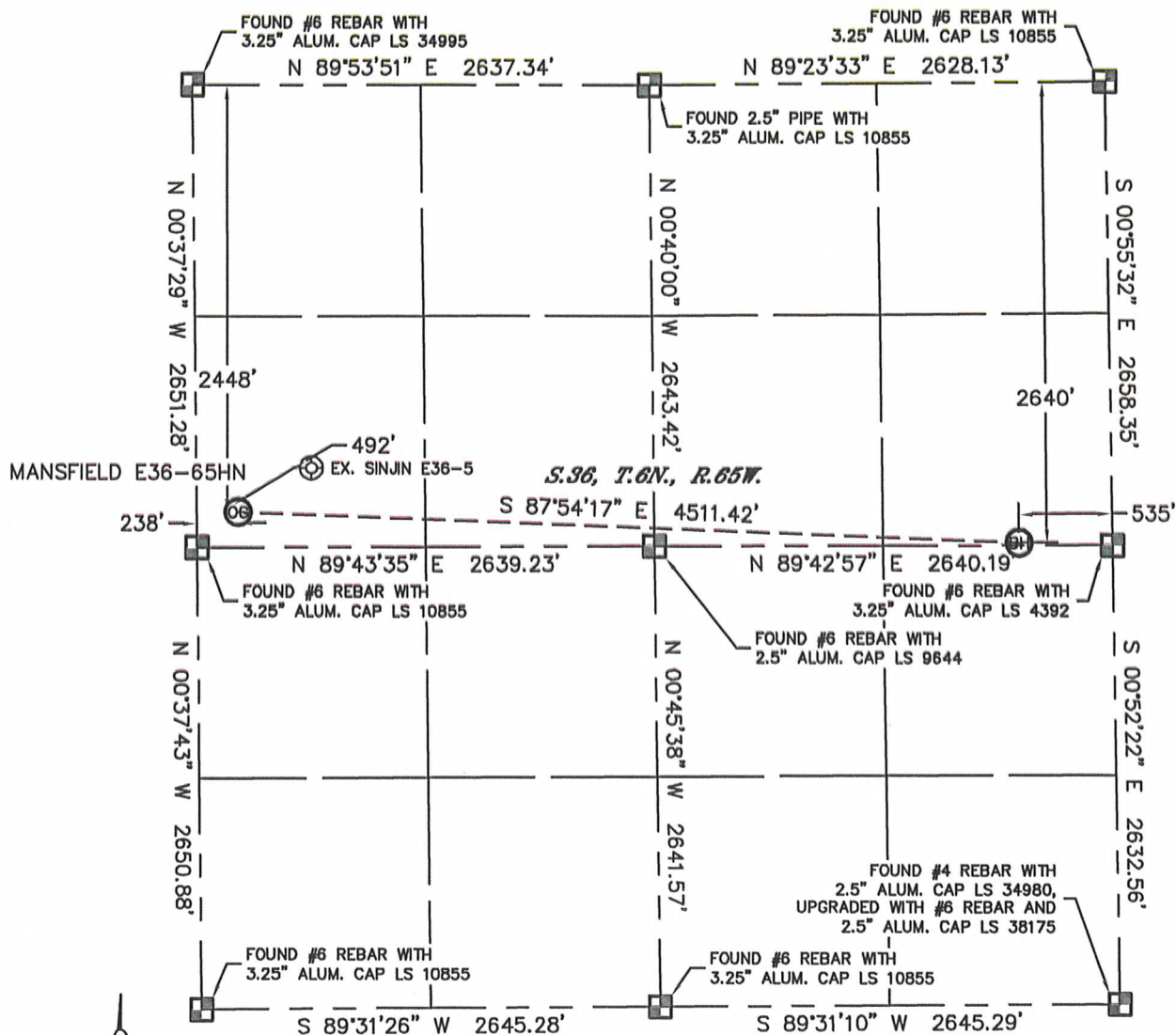


Lat40°, Inc. 1635 Foxtrail Drive, Suite 325 Loveland, CO 970-776-3321

WELL LOCATION CERTIFICATE

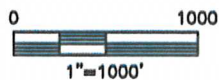
THIS MAP DOES NOT REPRESENT A BOUNDARY SURVEY

SECTION: 36
TOWNSHIP: 6N
RANGE: 65W



In accordance with a request from Matt Campbell with Noble Energy Inc., Lat40°, Inc. has determined the surface location of the MANSFIELD E36-65HN to be 2448' from the NORTH line and 238' from the WEST line and the bottom hole to be 2640' from the NORTH line and 535' from the EAST line as measured at right angles from the section lines of Section 36, Township 6 North, Range 65 West of the Sixth Principal Meridian, County of Weld, State of Colorado.

I hereby state that this Well Location Certificate was prepared by me, or under my direct supervision, that the fieldwork was completed on 6/24/11, for and on behalf of Noble Energy Inc. That this is not a Land Survey Plat or an Improvement Survey Plat, and that it is not to be relied upon for establishment of fence, building, or other future improvement lines.



NOTE:

- 1) Bearings shown are Grid Bearings of the Colorado State Plane Coordinate System, North Zone, North American Datum 1983/2007. The lineal dimensions as contained herein are based upon the "U.S. Survey Foot."
- 2) Ground elevations are based on an observed GPS elevation (NAVD 1988 DATUM).
- 3) NEAREST EXISTING WELL: SINJIN E36-5, 492'
- 4) IMPROVEMENTS: See LOCATION DRAWING for all visible improvements within 400' of disturbed area.
- 5) SURFACE USE: CROP FIELD, PIVOT CORNER
- 6) INSTRUMENT OPERATOR: ADAM KELLY

NOTE

According to Colorado law, you must commence any legal action based upon any defect in this W.L.C. within three years after you discover such defect. In no event, may any action based upon any defect in this survey be commenced more than ten years after the date of the certificate shown hereon. (13-80-105 C.R.S.)

LEGEND

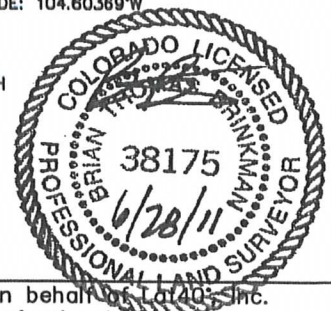
- = ALIQUOT MONUMENT AS DESCRIBED
- = CALCULATED POSITION

SURFACE LOCATION

LATITUDE: 40.44296°N
LONGITUDE: 104.81988°W
PDOP: 2.0
ELEV: 4654'
1/4, 1/4: SW1/4NW1/4
NEAREST PROPERTY LINE: 202' SOUTH

BOTTOM HOLE

LATITUDE: 40.44239°N
LONGITUDE: 104.80389°W



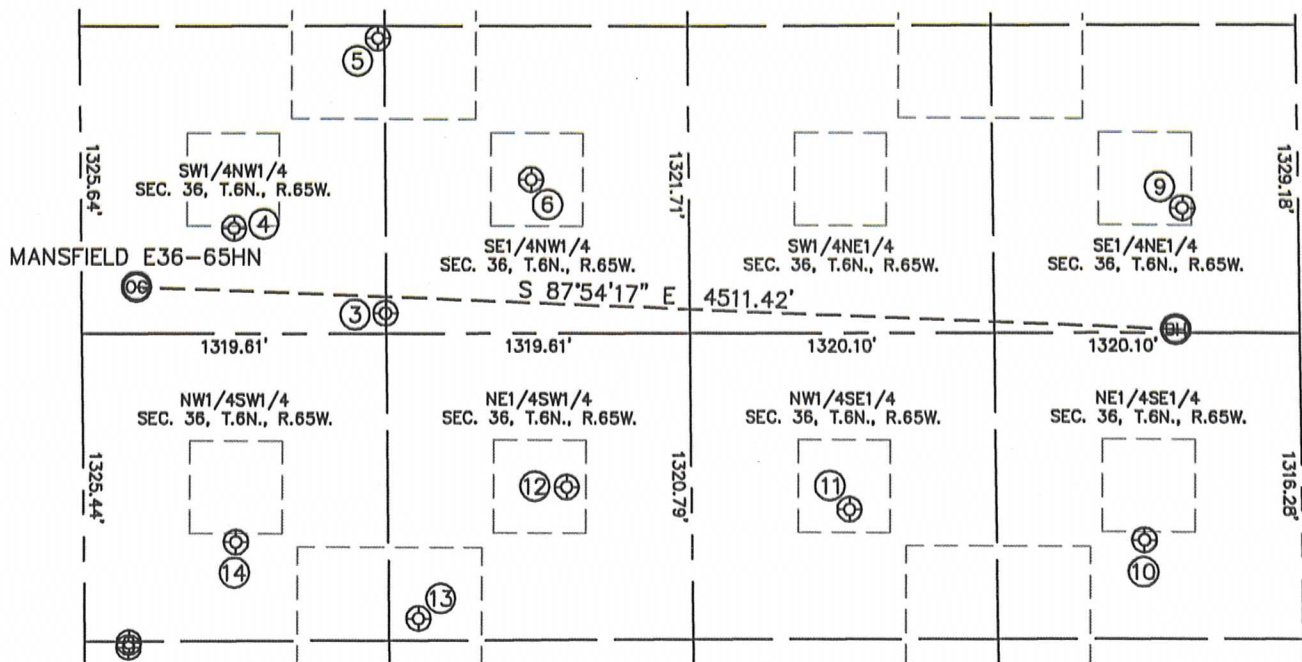
Brian T. Brinkman—On behalf of Lat40°, Inc.
Colorado Licensed Professional
Land Surveyor No. 38175

PROJECT#: 2011157

SITE SKETCH

MANSFIELD E36-65HN

SECTION: 36
TOWNSHIP: 6N
RANGE: 65W



③

SINJIN E36-20
SW1/4NW1/4
2560' FNL
1316' FWL
LAT-40.44263°N
LONG-104.61601°W
PDOP: 1.3
ELEV: 4652'

④

SINJIN E36-5
SW1/4NW1/4
2195' FNL
662' FWL
LAT-40.44365°N
LONG-104.61835°W
PDOP: 1.3
ELEV: 4655'

⑤

SINJIN STATE E36-19
SW1/4NW1/4
1376' FNL
1292' FWL
LAT-40.44588°N
LONG-104.61609°W
PDOP: 1.2
ELEV: 4653'

⑥

SINJIN E36-6
SE1/4NW1/4
1984' FNL
1954' FWL
LAT-40.44420°N
LONG-104.61371°W
PDOP: 0.8
ELEV: 4647'

⑨

SINJIN E36-8
SE1/4NE1/4
2117' FNL
499' FEL
LAT-40.44382°N
LONG-104.60357°W
PDOP: 2.7
ELEV: 4651'

⑩

SINJIN E36-9
NE1/4SE1/4
1744' FSL
682' FEL
LAT-40.43990°N
LONG-104.60420°W
PDOP: 1.9
ELEV: 4647'

⑪

SINJIN 36-10
NW1/4SE1/4
1880' FSL
1958' FEL
LAT-40.44028°N
LONG-104.60879°W
PDOP: 1.5
ELEV: 4646'

⑫

SINJIN E36-11
NE1/4SW1/4
1981' FSL
2097' FWL
LAT-40.44057°N
LONG-104.61320°W
PDOP: 2.1
ELEV: 4643'

⑬

SINJIN E36-25
NE1/4SW1/4
1417' FSL
1449' FWL
LAT-40.43902°N
LONG-104.61552°W
PDOP: 1.8
ELEV: 4643'

⑭

SINJIN E36-12
NW1/4SW1/4
1751' FSL
659' FWL
LAT-40.43994°N
LONG-104.61836°W
PDOP: 1.3
ELEV: 4647'

