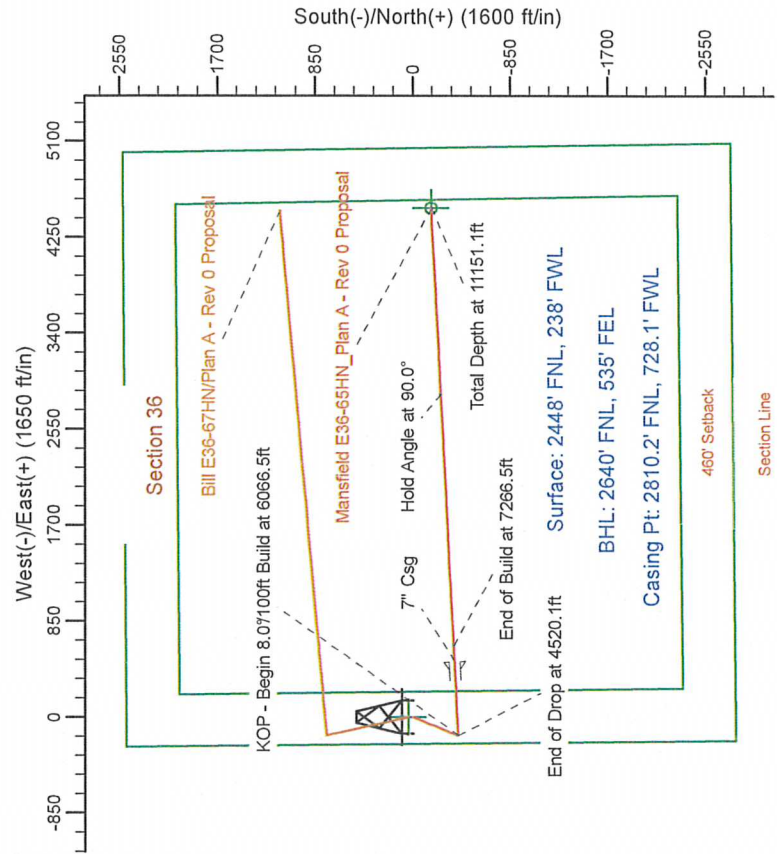
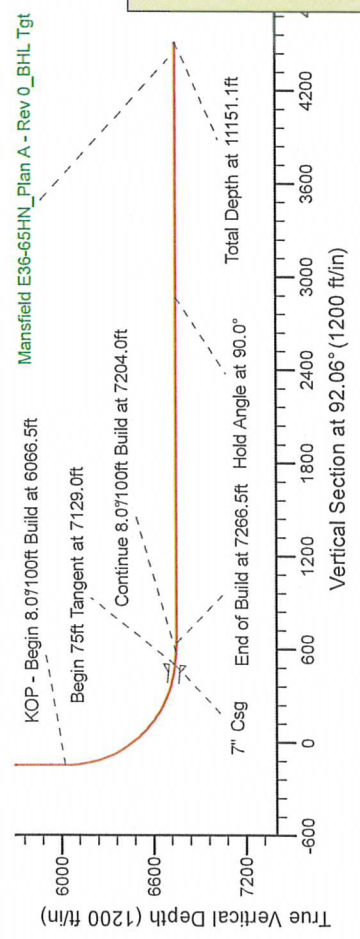
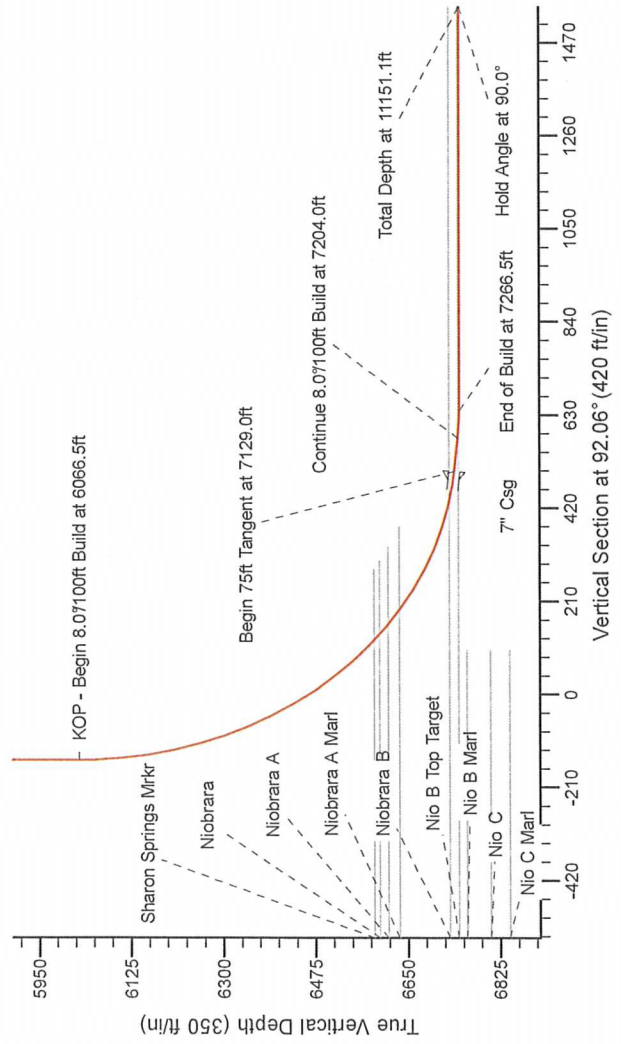


Project: Weld County Colorado (NAD 83)
Site: Sec. 36, T6N, R65W
Well: Mansfield E36-65HN
Wellbore: Plan A - Rev 0 (PERMITTING PLAN ONLY)
Design: Plan A - Rev 0 Proposal

SECTION DETAILS

Sec	MD	Inc	Azi	TVD	+N/-S	+E/-W	Dleg	TFace	VSec	Target
1	0.0	0.00	0.00	0.0	0.0	0.0	0.00	0.00	0.0	
2	2000.0	0.00	0.00	2000.0	0.0	0.0	0.00	0.00	0.0	
3	2480.0	12.00	202.58	2476.5	-46.2	0.0	0.00	0.00	-17.6	
4	4040.1	12.00	202.58	4002.5	-345.8	-19.2	2.50	202.58	-131.2	
5	4520.1	0.00	0.00	4479.0	-392.0	-143.8	0.00	0.00	-148.8	
6	6066.5	0.00	0.00	6025.4	-392.0	-163.0	2.50	180.00	-148.8	
7	7129.0	85.00	87.19	6738.9	-359.9	490.0	8.00	87.19	502.6	
8	7204.0	85.00	87.19	6745.4	-356.3	564.6	0.00	0.00	577.1	
9	7266.5	90.00	87.19	6748.1	-353.2	627.0	8.00	0.00	639.3	
10	11152.5	90.00	87.18	6748.0	-162.5	4508.3	0.00	-57.72	4511.2	Mansfield E36-65HN_Plan A - Rev 0_BHL Tgt-



WELL DETAILS: Mansfield E36-65HN(NAD83 Geodetic System)			
Northings	Ground Level:	Eastings	Longitude
428374.80	4654.0	989066.76	104° 37' 11.568 W
Plan: Plan A - Rev 0 Proposal (Mansfield E36-65HN/Plan A - Rev 0 (PERMITTING PLAN ONLY))			
Created By: Erasmo Mendoza		Date: 20.47, September 18 2011	

Magnetic North: 349.2010
Date: 9/18/2011
Time: 10:00 AM
Dip Angle: 67.10°
Field Strength: 514.4 A

T G M

2011 North is 0.97° East of True North (used for calculations).
Magnetic North is 0.97° East of True North (used for calculations).
For conversion to True North, add 0.97° to Magnetic North.
To convert to Magnetic, subtract 0.97° from True North.