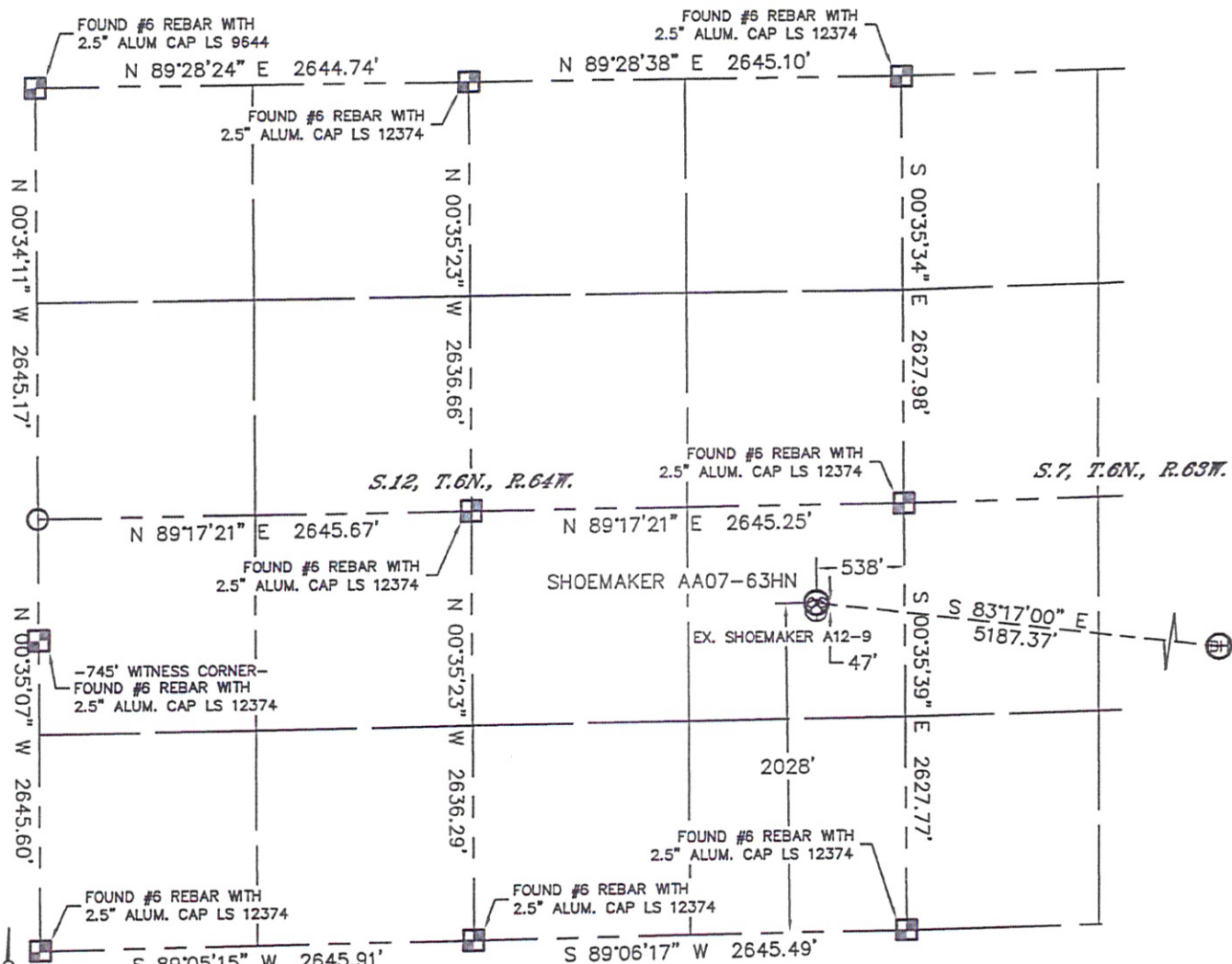


# WELL LOCATION CERTIFICATE

THIS MAP DOES NOT REPRESENT A BOUNDARY SURVEY

SECTION: 12  
TOWNSHIP: 6N  
RANGE: 64W



In accordance with a request from Nate McCorkell with Noble Energy Inc. Lat40°, Inc. has determined the surface location of the SHOEMAKER AA07-63HN to be 2028' from the SOUTH line and 538' from the EAST line as measured at right angles from the section lines of Section 12, Township 6 North, Range 64 West and the bottom hole to be 1320' from the SOUTH line and 535' from the EAST line as measured at right angles from the section lines of Section 7, Township 6 North, Range 63 West of the Sixth Principal Meridian, County of Weld, State of Colorado.

I hereby state that this Well Location Certificate was prepared by me, or under my direct supervision, that the fieldwork was completed on 5/5/11, for and on behalf of Noble Energy Inc. That this is not a Land Survey Plat or an Improvement Survey Plat, and that it is not to be relied upon for establishment of fence, building, or other future improvement lines.

## NOTE:

- 1) Bearings shown are Grid Bearings of the Colorado State Plane Coordinate System, North Zone, North American Datum 1983/2007. The lineal dimensions as contained herein are based upon the "U.S. Survey Foot."
- 2) Ground elevations are based on an observed GPS elevation (NAVD 1988 DATUM).
- 3) NEAREST EXISTING WELL: SHOEMAKER A12-9, 47'
- 4) IMPROVEMENTS: See LOCATION DRAWING for all visible improvements within 400' of disturbed area.
- 5) SURFACE USE: PASTURE, EX. WELL SITE
- 6) INSTRUMENT OPERATOR: ADAM KELLY

## NOTE

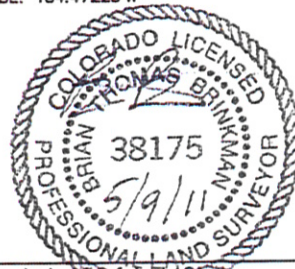
According to Colorado law, you must commence any legal action based upon any defect in this W.L.C. within three years after you discover such defect. In no event, may any action based upon any defect in this survey be commenced more than ten years after the date of the certificate shown hereon. (13-80-105 C.R.S.)

## LEGEND

- = ALIQUOT MONUMENT AS DESCRIBED
- = CALCULATED POSITION

SURFACE LOCATION  
LATITUDE: 40.49916°N  
LONGITUDE: 104.49074°W  
PDOP: 1.8  
ELEV: 4688'  
1/4, 1/4: NE1/4SE1/4  
NEAREST PROPERTY LINE: 538' EAST

BOTTOM HOLE  
LATITUDE: 40.49733°N  
LONGITUDE: 104.47225°W



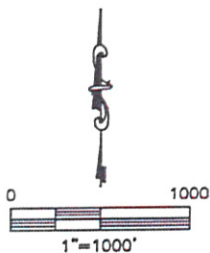
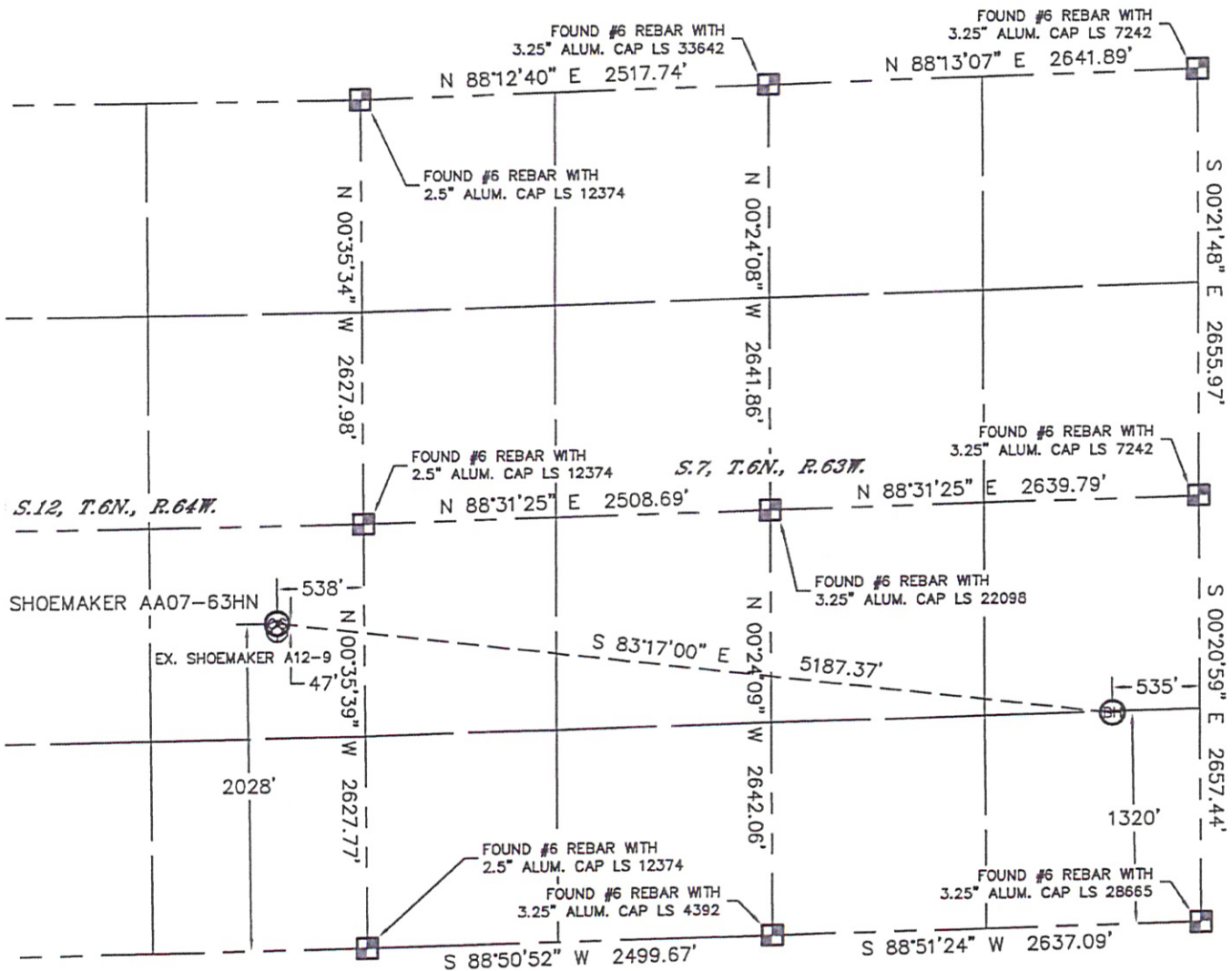
Brian T. Brinkman—On behalf of Lat40°, Inc.  
Colorado Licensed Professional  
Land Surveyor No. 38175 PROJECT#: 2011038

Lat40°, Inc. 1635 Foxtrail Drive, Suite 325 Loveland, CO 970-776-3321

# WELL LOCATION CERTIFICATE



THIS MAP DOES NOT REPRESENT A BOUNDARY SURVEY

SECTION: 12  
TOWNSHIP: 6N  
RANGE: 64W



**NOTE**  
According to Colorado law, you must commence any legal action based upon any defect in this W.L.C. within three years after you discover such defect. In no event, may any action based upon any defect in this survey be commenced more than ten years after the date of the certificate shown hereon. (13-80-105 C.R.S.)

## LEGEND

-  = ALIQUOT MONUMENT AS DESCRIBED
-  = CALCULATED POSITION



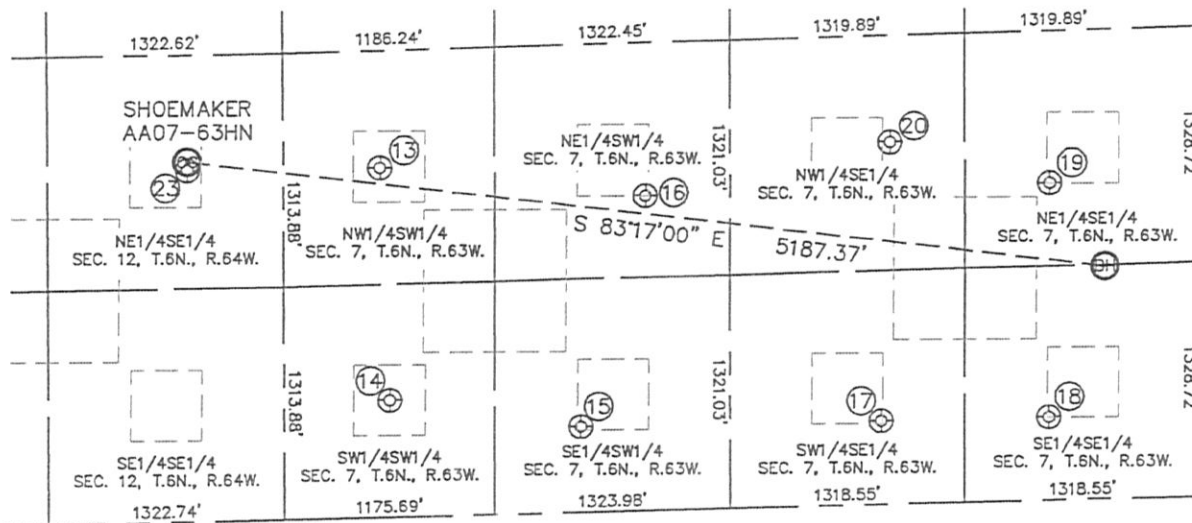
Brian T. Brinkman—On behalf of Lat40°, Inc.  
Colorado Licensed Professional  
Land Surveyor No. 38175 PROJECT#: 2011038

Lat40°, Inc. 1635 Foxtrail Drive, Suite 325 Loveland, CO 970-776-3321

# SITE SKETCH

SHOEMAKER AA07-63HN

SECTION: 12  
TOWNSHIP: 6N  
RANGE: 64W



13

HAGEMEISTER USX AA7-12  
NW1/4SW1/4  
1971' FSL  
541' FWL  
LAT-40.49902°N  
LONG-104.48686°W  
PDOP: 2.1  
ELEV: 4701'

14

JOHNSTON 14-7  
SW1/4SW1/4  
661' FSL  
591' FWL  
LAT-40.49543°N  
LONG-104.48669°W  
PDOP: 1.5  
ELEV: 4672'

15

TAYLOR USX AA7-14  
SE1/4SW1/4  
484' FSL  
1661' FWL  
LAT-40.49497°N  
LONG-104.48284°W  
PDOP: 2.0  
ELEV: 4672'

16

TRINITY 23-7  
NE1/4SW1/4  
1779' FSL  
2029' FWL  
LAT-40.49853°N  
LONG-104.48151°W  
PDOP: 1.4  
ELEV: 4684'

17

CHRISTIANSEN 34-7  
SW1/4SE1/4  
473' FSL  
1787' FWL  
LAT-40.49498°N  
LONG-104.47677°W  
PDOP: 2.3  
ELEV: 4668'

18

TRINITY 44-7  
SE1/4SE1/4  
472' FSL  
849' FWL  
LAT-40.49500°N  
LONG-104.47339°W  
PDOP: 1.2  
ELEV: 4665'

19

TRINITY 43-7  
NE1/4SE1/4  
1797' FSL  
844' FWL  
LAT-40.49863°N  
LONG-104.47335°W  
PDOP: 2.1  
ELEV: 4685'

20

TRINITY 33-7  
NW1/4SE1/4  
2046' FSL  
1737' FWL  
LAT-40.49930°N  
LONG-104.47656°W  
PDOP: 2.1  
ELEV: 4674'

23

SHOEMAKER A12-9  
NE1/4SE1/4  
1980' FSL  
538' FWL  
LAT-40.49903°N  
LONG-104.49074°W  
PDOP: 1.4  
ELEV: 4688'

