



EOG Resources, Inc - RM

Weld County, CO

Sec. 19, T11N, R63W, 6th P.M.

Critter Creek #23-19H

Wellbore #1

Survey: Critter Creek #23-19H - MWD Surveys

DDC Survey Report

28 January, 2011





Survey Certification Sheet

EOG Resources, Inc.
Company

RM-11023
Job Number

01/27/2011
Date

Sec. 19, T11N, R63W
Lease

Critter Creek #23-19H
Well Name

Weld, CO
County & State

Surveyed from a depth of: 1433 feet to 11989 feet MD

Type of Survey: MWD

Directional Supervisor/Surveyor: Mark Snyder

The data and calculations for this survey have been checked by me and conform to the standards and procedures set forth by **The Directional Drilling Company (DDC)**. This report represents a true and correct Directional survey of this well based on the original data obtained at the well site. Wellbore Coordinates are calculated using minimum curvature.

Digitally signed by
Larry Wright
DN: cn=Larry Wright,
o, ou,
email=larryw@directio
naldrillers.com, c=US
Date: 2011.01.27
16:10:59 -06'00'

Larry Wright
MWD General Manager

Company:	EOG Resources, Inc - RM	Local Co-ordinate Reference:	Well Critter Creek #23-19H
Project:	Weld County, CO	TVD Reference:	WELL @ 5312.0usft (SST #53)
Site:	Sec. 19, T11N, R63W, 6th P.M.	MD Reference:	WELL @ 5312.0usft (SST #53)
Well:	Critter Creek #23-19H	North Reference:	True
Wellbore:	Wellbore #1	Survey Calculation Method:	Minimum Curvature
Design:	Wellbore #1	Database:	EDM 5000.1 Single User Db

Project	Weld County, CO		
Map System:	US State Plane 1927 (Exact solution)	System Datum:	Mean Sea Level
Geo Datum:	NAD 1927 (NADCON CONUS)		
Map Zone:	Colorado North 501		

Site	Sec. 19, T11N, R63W, 6th P.M.		
Site Position:		Northing:	573,082.11 usft
From:	Lat/Long	Easting:	2,285,413.15 usft
Position Uncertainty:	0.0 usft	Slot Radius:	13-3/16 "
		Latitude:	40° 54' 7.010 N
		Longitude:	104° 28' 3.270 W
		Grid Convergence:	0.67 °

Well	Critter Creek #23-19H		
Well Position	+N-S	0.0 usft	Northing: 573,082.11 usft
	+E-W	0.0 usft	Easting: 2,285,413.15 usft
Position Uncertainty	0.0 usft	Wellhead Elevation:	usft
		Latitude:	40° 54' 7.010 N
		Longitude:	104° 28' 3.270 W
		Ground Level:	5,289.0 usft

Wellbore	Wellbore #1				
Magnetics	Model Name	Sample Date	Declination (°)	Dip Angle (°)	Field Strength (nT)
	IGRF2010	1/7/2011	8.81	67.52	53,467

Design	Wellbore #1				
Audit Notes:					
Version:	1.0	Phase:	ACTUAL	Tie On Depth:	0.0
Vertical Section:	Depth From (TVD) (usft)	+N-S (usft)	+E-W (usft)	Direction (°)	
	0.0	0.0	0.0	135.06	

Survey Program	Date	1/28/2011			
From (usft)	To (usft)	Survey (Wellbore)	Tool Name	Description	
1,515.0	11,989.0	Critter Creek #23-19H - MWD Surveys (W	MWD default	MWD - Standard	

Survey										
Measured Depth (usft)	Inclination (°)	Azimuth (°)	Vertical Depth (usft)	+N-S (usft)	+E-W (usft)	Vertical Section (usft)	Dogleg Rate (°/100usft)	Build Rate (°/100usft)	Turn Rate (°/100usft)	
Tie-In to Gyro										
1,433.0	0.50	188.10	1,433.0	0.7	3.0	1.6	0.00	0.00	0.00	
1,515.0	0.20	221.10	1,515.0	0.2	2.9	1.8	0.43	-0.37	40.24	
1,607.0	0.60	222.00	1,607.0	-0.2	2.4	1.9	0.43	0.43	0.98	
1,638.0	0.50	192.00	1,638.0	-0.5	2.3	2.0	0.97	-0.32	-96.77	
1,669.0	1.10	167.50	1,669.0	-0.9	2.3	2.3	2.19	1.94	-79.03	
1,699.0	2.70	148.40	1,699.0	-1.8	2.8	3.2	5.66	5.33	-63.67	
1,730.0	4.00	144.30	1,729.9	-3.3	3.8	5.0	4.26	4.19	-13.23	
1,792.0	4.90	133.40	1,791.7	-6.9	7.0	9.8	1.99	1.45	-17.58	
1,823.0	5.10	133.40	1,822.6	-8.7	8.9	12.5	0.65	0.65	0.00	
1,854.0	5.10	134.00	1,853.5	-10.6	10.9	15.2	0.17	0.00	1.94	

Company:	EOG Resources, Inc - RM	Local Co-ordinate Reference:	Well Critter Creek #23-19H
Project:	Weld County, CO	TVD Reference:	WELL @ 5312.0usft (SST #53)
Site:	Sec. 19, T11N, R63W, 6th P.M.	MD Reference:	WELL @ 5312.0usft (SST #53)
Well:	Critter Creek #23-19H	North Reference:	True
Wellbore:	Wellbore #1	Survey Calculation Method:	Minimum Curvature
Design:	Wellbore #1	Database:	EDM 5000.1 Single User Db

Survey									
Measured Depth (usft)	Inclination (°)	Azimuth (°)	Vertical Depth (usft)	+N/-S (usft)	+E/-W (usft)	Vertical Section (usft)	Dogleg Rate (°/100usft)	Build Rate (°/100usft)	Turn Rate (°/100usft)
1,915.0	5.90	134.90	1,914.2	-14.7	15.1	21.1	1.32	1.31	1.48
1,977.0	7.30	139.20	1,975.8	-20.0	19.9	28.2	2.39	2.26	6.94
2,041.0	9.10	134.30	2,039.1	-26.6	26.2	37.3	3.01	2.81	-7.66
2,104.0	10.60	132.70	2,101.2	-34.0	34.0	48.1	2.42	2.38	-2.54
2,168.0	10.80	132.70	2,164.1	-42.0	42.8	60.0	0.31	0.31	0.00
2,232.0	11.40	132.60	2,226.9	-50.4	51.8	72.3	0.94	0.94	-0.16
2,295.0	12.80	136.40	2,288.5	-59.7	61.2	85.5	2.56	2.22	6.03
2,358.0	13.60	136.30	2,349.8	-70.1	71.1	99.9	1.27	1.27	-0.16
2,421.0	13.40	136.10	2,411.1	-80.7	81.3	114.6	0.33	-0.32	-0.32
2,517.0	12.60	138.20	2,504.6	-96.5	96.0	136.1	0.97	-0.83	2.19
2,549.0	12.30	136.90	2,535.9	-101.6	100.7	143.0	1.28	-0.94	-4.06
2,644.0	12.80	134.70	2,628.6	-116.4	115.1	163.7	0.73	0.53	-2.32
2,707.0	12.70	132.70	2,690.1	-126.0	125.1	177.6	0.72	-0.16	-3.17
2,770.0	12.10	132.40	2,751.6	-135.1	135.1	191.1	0.96	-0.95	-0.48
2,865.0	12.40	136.30	2,844.4	-149.2	149.5	211.2	0.93	0.32	4.11
2,929.0	12.50	137.50	2,906.9	-159.3	158.9	225.0	0.43	0.16	1.88
3,023.0	14.20	134.30	2,998.4	-174.9	174.0	246.7	1.97	1.81	-3.40
3,119.0	13.80	134.50	3,091.5	-191.1	190.6	269.9	0.42	-0.42	0.21
3,214.0	13.10	135.00	3,183.9	-206.7	206.3	292.0	0.75	-0.74	0.53
3,309.0	13.30	136.10	3,276.4	-222.1	221.5	313.7	0.34	0.21	1.16
3,404.0	12.80	136.90	3,369.0	-237.7	236.3	335.2	0.56	-0.53	0.84
3,468.0	12.40	136.40	3,431.4	-247.9	245.9	349.1	0.65	-0.63	-0.78
3,562.0	13.00	138.20	3,523.1	-263.0	259.9	369.8	0.76	0.64	1.91
3,657.0	13.00	136.60	3,615.7	-278.8	274.3	391.1	0.38	0.00	-1.68
3,752.0	12.40	138.00	3,708.4	-294.1	288.5	412.0	0.71	-0.63	1.47
3,848.0	13.40	134.30	3,801.9	-309.6	303.4	433.4	1.35	1.04	-3.85
3,943.0	12.80	136.80	3,894.5	-324.9	318.4	454.9	0.87	-0.63	2.63
4,039.0	12.00	136.10	3,988.2	-339.9	332.6	475.5	0.85	-0.83	-0.73
4,134.0	11.20	136.40	4,081.3	-353.7	345.9	494.6	0.84	-0.84	0.32
4,230.0	11.80	134.00	4,175.4	-367.2	359.3	513.8	0.80	0.63	-2.50
4,325.0	14.30	132.00	4,267.9	-381.8	375.0	535.2	2.67	2.63	-2.11
4,420.0	14.90	132.70	4,359.8	-398.0	392.7	559.1	0.66	0.63	0.74
4,515.0	14.90	134.10	4,451.6	-414.7	410.5	583.5	0.38	0.00	1.47
4,609.0	14.50	134.90	4,542.6	-431.5	427.5	607.4	0.48	-0.43	0.85
4,704.0	14.30	134.70	4,634.6	-448.1	444.3	631.0	0.22	-0.21	-0.21
4,799.0	14.00	136.30	4,726.7	-464.7	460.5	654.2	0.52	-0.32	1.68
4,894.0	13.00	132.00	4,819.1	-480.1	476.4	676.4	1.49	-1.05	-4.53
4,989.0	12.80	129.90	4,911.7	-494.0	492.4	697.5	0.54	-0.21	-2.21
Cross Section-Line @ 5015' MD									
5,015.0	12.62	131.59	4,937.0	-497.8	496.8	703.2	1.59	-0.69	6.50
Cross Section-Line @ 5060' MD									
5,060.0	12.34	134.63	4,981.0	-504.4	503.9	713.0	1.59	-0.63	6.75
5,084.0	12.20	136.30	5,004.4	-508.0	507.5	718.1	1.59	-0.57	6.97

Company:	EOG Resources, Inc - RM	Local Co-ordinate Reference:	Well Critter Creek #23-19H
Project:	Weld County, CO	TVD Reference:	WELL @ 5312.0usft (SST #53)
Site:	Sec. 19, T11N, R63W, 6th P.M.	MD Reference:	WELL @ 5312.0usft (SST #53)
Well:	Critter Creek #23-19H	North Reference:	True
Wellbore:	Wellbore #1	Survey Calculation Method:	Minimum Curvature
Design:	Wellbore #1	Database:	EDM 5000.1 Single User Db

Survey

Measured Depth (usft)	Inclination (°)	Azimuth (°)	Vertical Depth (usft)	+N/-S (usft)	+E/-W (usft)	Vertical Section (usft)	Dogleg Rate (°/100usft)	Build Rate (°/100usft)	Turn Rate (°/100usft)
5,147.0	11.90	137.80	5,066.0	-517.7	516.4	731.2	0.69	-0.48	2.38
5,243.0	12.10	139.90	5,159.9	-532.7	529.5	751.1	0.50	0.21	2.19
5,339.0	12.20	133.30	5,253.8	-547.3	543.4	771.3	1.45	0.10	-6.88
5,434.0	12.80	133.60	5,346.5	-561.5	558.3	791.8	0.64	0.63	0.32
5,529.0	11.90	133.80	5,439.3	-575.5	573.0	812.1	0.95	-0.95	0.21
5,623.0	12.80	132.40	5,531.2	-589.2	587.7	832.2	1.01	0.96	-1.49
5,654.0	12.50	133.80	5,561.4	-593.9	592.7	839.0	1.38	-0.97	4.52
5,718.0	12.80	134.10	5,623.9	-603.6	602.8	853.0	0.48	0.47	0.47
5,812.0	12.80	133.40	5,715.5	-618.0	617.8	873.9	0.16	0.00	-0.74
5,908.0	13.00	136.30	5,809.1	-633.1	633.0	895.3	0.71	0.21	3.02
6,004.0	13.70	133.30	5,902.5	-648.7	648.7	917.4	1.03	0.73	-3.13
6,099.0	12.50	133.30	5,995.0	-663.5	664.4	939.0	1.26	-1.26	0.00
6,193.0	13.70	136.80	6,086.6	-678.6	679.4	960.3	1.53	1.28	3.72
6,287.0	12.80	138.70	6,178.1	-694.5	693.9	981.8	1.06	-0.96	2.02
6,383.0	13.40	134.70	6,271.6	-710.3	708.8	1,003.5	1.13	0.63	-4.17
6,478.0	11.80	136.30	6,364.3	-725.1	723.4	1,024.2	1.72	-1.68	1.68
6,574.0	12.10	135.40	6,458.2	-739.4	737.2	1,044.1	0.37	0.31	-0.94
6,638.0	12.30	134.50	6,520.8	-748.9	746.8	1,057.6	0.43	0.31	-1.41
6,702.0	12.40	132.70	6,583.3	-758.4	756.7	1,071.3	0.62	0.16	-2.81
6,796.0	11.90	131.30	6,675.2	-771.6	771.4	1,091.1	0.62	-0.53	-1.49
6,892.0	11.80	134.30	6,769.1	-785.0	785.9	1,110.8	0.65	-0.10	3.13
6,955.0	11.70	133.60	6,830.8	-793.9	795.1	1,123.6	0.28	-0.16	-1.11
7,050.0	12.90	136.10	6,923.6	-808.2	809.4	1,143.8	1.38	1.26	2.63
7,107.0	12.20	135.60	6,979.3	-817.1	818.1	1,156.2	1.24	-1.23	-0.88
7,144.0	11.50	137.80	7,015.5	-822.6	823.3	1,163.8	2.25	-1.89	5.95
7,175.0	12.30	136.60	7,045.8	-827.3	827.6	1,170.2	2.70	2.58	-3.87
7,207.0	15.60	133.10	7,076.9	-832.7	833.1	1,177.9	10.64	10.31	-10.94
7,239.0	19.60	131.70	7,107.4	-839.2	840.2	1,187.6	12.57	12.50	-4.38
7,271.0	23.00	131.10	7,137.2	-846.9	849.0	1,199.2	10.65	10.63	-1.88
7,302.0	26.60	135.00	7,165.3	-855.8	858.4	1,212.1	12.75	11.61	12.58
7,334.0	30.60	136.10	7,193.4	-866.7	869.2	1,227.5	12.61	12.50	3.44
7,366.0	34.90	138.00	7,220.3	-879.4	880.9	1,244.7	13.81	13.44	5.94
7,397.0	39.30	138.40	7,245.0	-893.3	893.4	1,263.4	14.21	14.19	1.29
7,429.0	43.80	139.20	7,269.0	-909.3	907.4	1,284.6	14.16	14.06	2.50
7,460.0	47.60	139.60	7,290.6	-926.2	921.8	1,306.7	12.29	12.26	1.29
7,493.0	50.80	139.40	7,312.2	-945.1	938.0	1,331.6	9.71	9.70	-0.61
7,524.0	54.20	139.10	7,331.1	-963.8	954.1	1,356.1	10.99	10.97	-0.97
7,556.0	58.00	138.40	7,348.9	-983.7	971.6	1,382.6	12.01	11.88	-2.19
7,588.0	61.20	137.70	7,365.1	-1,004.3	990.0	1,410.2	10.18	10.00	-2.19
7,619.0	64.10	136.10	7,379.3	-1,024.4	1,008.9	1,437.7	10.42	9.35	-5.16
7,651.0	65.40	135.90	7,393.0	-1,045.2	1,029.0	1,466.6	4.10	4.06	-0.63
7,683.0	67.50	136.40	7,405.8	-1,066.3	1,049.3	1,496.0	6.72	6.56	1.56
7,714.0	70.00	136.10	7,417.0	-1,087.2	1,069.3	1,524.9	8.11	8.06	-0.97
7,747.0	72.60	134.90	7,427.6	-1,109.5	1,091.2	1,556.1	8.60	7.88	-3.64

Company:	EOG Resources, Inc - RM	Local Co-ordinate Reference:	Well Critter Creek #23-19H
Project:	Weld County, CO	TVD Reference:	WELL @ 5312.0usft (SST #53)
Site:	Sec. 19, T11N, R63W, 6th P.M.	MD Reference:	WELL @ 5312.0usft (SST #53)
Well:	Critter Creek #23-19H	North Reference:	True
Wellbore:	Wellbore #1	Survey Calculation Method:	Minimum Curvature
Design:	Wellbore #1	Database:	EDM 5000.1 Single User Db

Survey

Measured Depth (usft)	Inclination (°)	Azimuth (°)	Vertical Depth (usft)	+N/-S (usft)	+E/-W (usft)	Vertical Section (usft)	Dogleg Rate (°/100usft)	Build Rate (°/100usft)	Turn Rate (°/100usft)
Cross Hard-Line @ 7762' MD									
7,762.0	74.05	134.51	7,431.9	-1,119.6	1,101.4	1,570.5	9.99	9.67	-2.60
7,778.0	75.60	134.10	7,436.1	-1,130.4	1,112.4	1,585.9	9.99	9.68	-2.56
7,810.0	79.40	134.10	7,443.0	-1,152.1	1,134.9	1,617.2	11.88	11.88	0.00
7,842.0	84.40	133.40	7,447.5	-1,174.0	1,157.7	1,648.8	15.77	15.63	-2.19
7,873.0	87.10	133.40	7,449.8	-1,195.3	1,180.2	1,679.7	8.71	8.71	0.00
Casing Point @ 7912' MD									
7,912.0	88.79	131.86	7,451.2	-1,221.7	1,208.9	1,718.7	5.87	4.34	-3.95
7,949.0	90.40	130.40	7,451.5	-1,246.0	1,236.7	1,755.6	5.87	4.34	-3.94
7,980.0	91.90	131.10	7,450.8	-1,266.2	1,260.2	1,786.5	5.34	4.84	2.26
8,041.0	91.60	131.90	7,449.0	-1,306.6	1,305.9	1,847.3	1.40	-0.49	1.31
8,102.0	90.80	131.50	7,447.7	-1,347.2	1,351.4	1,908.2	1.47	-1.31	-0.66
8,133.0	90.40	132.60	7,447.4	-1,368.0	1,374.4	1,939.2	3.78	-1.29	3.55
8,164.0	91.60	132.40	7,446.8	-1,388.9	1,397.3	1,970.1	3.92	3.87	-0.65
8,195.0	91.70	133.60	7,445.9	-1,410.0	1,419.9	2,001.1	3.88	0.32	3.87
8,225.0	92.90	134.70	7,444.7	-1,430.9	1,441.5	2,031.1	5.42	4.00	3.67
8,256.0	93.10	134.00	7,443.1	-1,452.5	1,463.6	2,062.0	2.35	0.65	-2.26
8,287.0	93.50	133.30	7,441.3	-1,473.9	1,486.0	2,093.0	2.60	1.29	-2.26
8,318.0	90.80	133.60	7,440.2	-1,495.2	1,508.5	2,123.9	8.76	-8.71	0.97
8,349.0	90.40	133.40	7,439.8	-1,516.5	1,531.0	2,154.9	1.44	-1.29	-0.65
8,380.0	89.00	136.30	7,440.0	-1,538.4	1,552.9	2,185.9	10.39	-4.52	9.35
8,410.0	88.60	136.40	7,440.6	-1,560.1	1,573.6	2,215.9	1.37	-1.33	0.33
8,441.0	88.30	136.60	7,441.5	-1,582.6	1,595.0	2,246.9	1.16	-0.97	0.65
8,472.0	90.00	138.70	7,441.9	-1,605.5	1,615.8	2,277.8	8.71	5.48	6.77
8,504.0	90.40	138.90	7,441.8	-1,629.6	1,636.9	2,309.8	1.40	1.25	0.63
8,535.0	90.90	138.50	7,441.5	-1,652.9	1,657.4	2,340.7	2.07	1.61	-1.29
8,567.0	91.70	140.10	7,440.7	-1,677.1	1,678.2	2,372.6	5.59	2.50	5.00
8,598.0	92.00	139.90	7,439.7	-1,700.8	1,698.2	2,403.5	1.16	0.97	-0.65
8,630.0	90.80	136.90	7,439.0	-1,724.8	1,719.4	2,435.4	10.09	-3.75	-9.38
8,661.0	89.80	137.10	7,438.8	-1,747.4	1,740.5	2,466.4	3.29	-3.23	0.65
8,693.0	89.90	136.90	7,438.9	-1,770.8	1,762.4	2,498.4	0.70	0.31	-0.63
8,725.0	90.80	137.50	7,438.7	-1,794.3	1,784.1	2,530.3	3.38	2.81	1.88
8,757.0	91.60	136.80	7,438.0	-1,817.8	1,805.9	2,562.3	3.32	2.50	-2.19
8,788.0	90.00	136.30	7,437.6	-1,840.3	1,827.2	2,593.3	5.41	-5.16	-1.61
8,820.0	90.40	134.90	7,437.5	-1,863.1	1,849.6	2,625.3	4.55	1.25	-4.38
8,851.0	90.80	136.10	7,437.1	-1,885.2	1,871.3	2,656.3	4.08	1.29	3.87
8,883.0	90.10	135.70	7,436.9	-1,908.2	1,893.6	2,688.3	2.52	-2.19	-1.25
8,916.0	89.30	135.40	7,437.1	-1,931.8	1,916.7	2,721.3	2.59	-2.42	-0.91
8,947.0	89.30	134.30	7,437.4	-1,953.6	1,938.6	2,752.3	3.55	0.00	-3.55
8,980.0	89.90	135.40	7,437.7	-1,976.9	1,962.0	2,785.3	3.80	1.82	3.33
9,012.0	90.80	134.10	7,437.5	-1,999.4	1,984.8	2,817.3	4.94	2.81	-4.06
9,044.0	90.80	132.90	7,437.0	-2,021.5	2,008.0	2,849.3	3.75	0.00	-3.75
9,075.0	91.10	133.40	7,436.5	-2,042.7	2,030.6	2,880.2	1.88	0.97	1.61

Company:	EOG Resources, Inc - RM	Local Co-ordinate Reference:	Well Critter Creek #23-19H
Project:	Weld County, CO	TVD Reference:	WELL @ 5312.0usft (SST #53)
Site:	Sec. 19, T11N, R63W, 6th P.M.	MD Reference:	WELL @ 5312.0usft (SST #53)
Well:	Critter Creek #23-19H	North Reference:	True
Wellbore:	Wellbore #1	Survey Calculation Method:	Minimum Curvature
Design:	Wellbore #1	Database:	EDM 5000.1 Single User Db

Survey

Measured Depth (usft)	Inclination (°)	Azimuth (°)	Vertical Depth (usft)	+N/-S (usft)	+E/-W (usft)	Vertical Section (usft)	Dogleg Rate (°/100usft)	Build Rate (°/100usft)	Turn Rate (°/100usft)
9,107.0	91.50	134.00	7,435.8	-2,064.8	2,053.7	2,912.2	2.25	1.25	1.88
9,139.0	89.60	133.40	7,435.5	-2,086.9	2,076.8	2,944.2	6.23	-5.94	-1.88
9,170.0	89.10	132.20	7,435.8	-2,107.9	2,099.6	2,975.2	4.19	-1.61	-3.87
9,203.0	88.70	133.10	7,436.5	-2,130.3	2,123.9	3,008.1	2.98	-1.21	2.73
9,235.0	88.90	132.20	7,437.1	-2,152.0	2,147.4	3,040.1	2.88	0.63	-2.81
9,266.0	88.80	131.50	7,437.8	-2,172.6	2,170.5	3,071.0	2.28	-0.32	-2.26
9,298.0	90.40	133.10	7,438.0	-2,194.2	2,194.1	3,103.0	7.07	5.00	5.00
9,329.0	91.30	134.90	7,437.5	-2,215.7	2,216.4	3,134.0	6.49	2.90	5.81
9,362.0	91.00	135.00	7,436.9	-2,239.0	2,239.8	3,167.0	0.96	-0.91	0.30
9,393.0	90.80	133.40	7,436.4	-2,260.6	2,262.0	3,198.0	5.20	-0.65	-5.16
9,425.0	90.70	134.30	7,436.0	-2,282.8	2,285.1	3,230.0	2.83	-0.31	2.81
9,457.0	90.50	135.00	7,435.6	-2,305.3	2,307.8	3,262.0	2.27	-0.63	2.19
9,489.0	90.40	134.70	7,435.4	-2,327.8	2,330.5	3,294.0	0.99	-0.31	-0.94
9,521.0	90.20	134.00	7,435.2	-2,350.2	2,353.4	3,326.0	2.28	-0.63	-2.19
9,552.0	90.00	134.10	7,435.1	-2,371.8	2,375.7	3,357.0	0.72	-0.65	0.32
9,584.0	89.90	134.70	7,435.2	-2,394.2	2,398.6	3,389.0	1.90	-0.31	1.88
9,616.0	89.80	134.00	7,435.3	-2,416.5	2,421.4	3,421.0	2.21	-0.31	-2.19
9,647.0	89.80	134.30	7,435.4	-2,438.1	2,443.7	3,452.0	0.97	0.00	0.97
9,679.0	89.80	134.10	7,435.5	-2,460.4	2,466.6	3,483.9	0.62	0.00	-0.63
9,711.0	89.70	132.40	7,435.6	-2,482.4	2,489.9	3,515.9	5.32	-0.31	-5.31
9,743.0	89.80	131.90	7,435.8	-2,503.8	2,513.7	3,547.9	1.59	0.31	-1.56
9,775.0	90.30	132.90	7,435.7	-2,525.4	2,537.3	3,579.9	3.49	1.56	3.13
9,807.0	90.40	134.70	7,435.5	-2,547.6	2,560.4	3,611.8	5.63	0.31	5.63
9,838.0	90.60	133.30	7,435.3	-2,569.1	2,582.7	3,642.8	4.56	0.65	-4.52
9,870.0	90.50	133.10	7,435.0	-2,591.0	2,606.0	3,674.8	0.70	-0.31	-0.63
9,902.0	89.70	135.70	7,434.9	-2,613.4	2,628.9	3,706.8	8.50	-2.50	8.13
9,934.0	89.40	133.80	7,435.2	-2,635.9	2,651.6	3,738.8	6.01	-0.94	-5.94
9,966.0	89.60	134.30	7,435.4	-2,658.2	2,674.6	3,770.8	1.68	0.63	1.56
9,998.0	89.30	135.40	7,435.7	-2,680.7	2,697.3	3,802.8	3.56	-0.94	3.44
10,029.0	89.30	135.40	7,436.1	-2,702.8	2,719.0	3,833.8	0.00	0.00	0.00
10,061.0	90.50	137.10	7,436.2	-2,725.9	2,741.2	3,865.8	6.50	3.75	5.31
10,093.0	91.80	137.80	7,435.5	-2,749.5	2,762.8	3,897.8	4.61	4.06	2.19
10,124.0	93.50	139.40	7,434.1	-2,772.7	2,783.3	3,928.7	7.53	5.48	5.16
10,156.0	93.30	139.10	7,432.2	-2,796.9	2,804.1	3,960.5	1.13	-0.63	-0.94
10,188.0	91.90	137.10	7,430.7	-2,820.7	2,825.5	3,992.4	7.62	-4.38	-6.25
10,219.0	91.60	135.90	7,429.8	-2,843.2	2,846.8	4,023.4	3.99	-0.97	-3.87
10,251.0	90.80	135.70	7,429.1	-2,866.1	2,869.1	4,055.4	2.58	-2.50	-0.63
10,282.0	90.10	135.70	7,428.9	-2,888.3	2,890.8	4,086.4	2.26	-2.26	0.00
10,314.0	90.80	136.90	7,428.6	-2,911.4	2,912.9	4,118.4	4.34	2.19	3.75
10,345.0	90.50	135.60	7,428.3	-2,933.8	2,934.3	4,149.4	4.30	-0.97	-4.19
10,377.0	90.70	136.40	7,428.0	-2,956.8	2,956.5	4,181.4	2.58	0.63	2.50
10,409.0	90.80	139.10	7,427.5	-2,980.5	2,978.0	4,213.3	8.44	0.31	8.44
10,440.0	91.00	138.50	7,427.0	-3,003.8	2,998.5	4,244.3	2.04	0.65	-1.94
10,472.0	90.30	137.80	7,426.7	-3,027.7	3,019.8	4,276.2	3.09	-2.19	-2.19

Company:	EOG Resources, Inc - RM	Local Co-ordinate Reference:	Well Critter Creek #23-19H
Project:	Weld County, CO	TVD Reference:	WELL @ 5312.0usft (SST #53)
Site:	Sec. 19, T11N, R63W, 6th P.M.	MD Reference:	WELL @ 5312.0usft (SST #53)
Well:	Critter Creek #23-19H	North Reference:	True
Wellbore:	Wellbore #1	Survey Calculation Method:	Minimum Curvature
Design:	Wellbore #1	Database:	EDM 5000.1 Single User Db

Survey

Measured Depth (usft)	Inclination (°)	Azimuth (°)	Vertical Depth (usft)	+N/-S (usft)	+E/-W (usft)	Vertical Section (usft)	Dogleg Rate (°/100usft)	Build Rate (°/100usft)	Turn Rate (°/100usft)
10,503.0	91.70	140.10	7,426.1	-3,051.0	3,040.2	4,307.1	8.68	4.52	7.42
10,535.0	90.50	137.30	7,425.5	-3,075.1	3,061.3	4,339.1	9.52	-3.75	-8.75
10,567.0	88.70	136.90	7,425.7	-3,098.5	3,083.1	4,371.0	5.76	-5.63	-1.25
10,599.0	85.80	137.80	7,427.3	-3,122.0	3,104.7	4,403.0	9.49	-9.06	2.81
10,632.0	85.60	137.70	7,429.8	-3,146.4	3,126.8	4,435.8	0.68	-0.61	-0.30
10,664.0	85.60	135.60	7,432.2	-3,169.6	3,148.7	4,467.7	6.54	0.00	-6.56
10,696.0	87.20	136.60	7,434.2	-3,192.6	3,170.9	4,499.7	5.89	5.00	3.13
10,728.0	88.80	138.70	7,435.3	-3,216.2	3,192.4	4,531.6	8.25	5.00	6.56
10,760.0	89.10	139.40	7,435.9	-3,240.4	3,213.4	4,563.5	2.38	0.94	2.19
10,792.0	90.60	138.00	7,436.0	-3,264.4	3,234.5	4,595.5	6.41	4.69	-4.38
10,824.0	90.60	137.50	7,435.7	-3,288.1	3,256.0	4,627.4	1.56	0.00	-1.56
10,856.0	90.40	136.60	7,435.4	-3,311.5	3,277.8	4,659.4	2.88	-0.63	-2.81
10,888.0	90.80	139.40	7,435.1	-3,335.3	3,299.2	4,691.4	8.84	1.25	8.75
10,920.0	91.10	137.10	7,434.5	-3,359.2	3,320.5	4,723.3	7.25	0.94	-7.19
10,951.0	89.80	137.80	7,434.3	-3,382.0	3,341.5	4,754.3	4.76	-4.19	2.26
10,983.0	89.00	136.90	7,434.6	-3,405.6	3,363.2	4,786.2	3.76	-2.50	-2.81
11,015.0	89.10	135.20	7,435.2	-3,428.6	3,385.4	4,818.2	5.32	0.31	-5.31
11,047.0	89.20	134.90	7,435.6	-3,451.2	3,408.0	4,850.2	0.99	0.31	-0.94
11,110.0	89.20	136.30	7,436.5	-3,496.2	3,452.1	4,913.2	2.22	0.00	2.22
11,173.0	90.30	135.70	7,436.8	-3,541.6	3,495.8	4,976.2	1.99	1.75	-0.95
11,206.0	90.60	134.70	7,436.5	-3,565.0	3,519.1	5,009.2	3.16	0.91	-3.03
11,271.0	90.00	132.70	7,436.2	-3,609.9	3,566.1	5,074.2	3.21	-0.92	-3.08
11,335.0	89.20	135.00	7,436.6	-3,654.2	3,612.2	5,138.2	3.80	-1.25	3.59
11,367.0	89.30	133.40	7,437.0	-3,676.5	3,635.2	5,170.2	5.01	0.31	-5.00
11,398.0	89.20	133.30	7,437.5	-3,697.8	3,657.7	5,201.1	0.46	-0.32	-0.32
11,431.0	87.80	134.00	7,438.3	-3,720.6	3,681.6	5,234.1	4.74	-4.24	2.12
11,463.0	87.20	134.00	7,439.7	-3,742.8	3,704.6	5,266.1	1.88	-1.88	0.00
11,496.0	87.20	133.10	7,441.3	-3,765.5	3,728.5	5,299.0	2.72	0.00	-2.73
11,528.0	87.20	134.10	7,442.9	-3,787.5	3,751.6	5,331.0	3.12	0.00	3.13
11,559.0	87.10	134.50	7,444.4	-3,809.1	3,773.8	5,361.9	1.33	-0.32	1.29
11,591.0	87.30	132.90	7,446.0	-3,831.2	3,796.9	5,393.9	5.03	0.63	-5.00
11,623.0	87.10	134.10	7,447.6	-3,853.2	3,820.0	5,425.8	3.80	-0.63	3.75
11,654.0	87.30	134.10	7,449.1	-3,874.8	3,842.3	5,456.8	0.65	0.65	0.00
11,686.0	87.30	134.00	7,450.6	-3,897.0	3,865.3	5,488.8	0.31	0.00	-0.31
11,718.0	87.30	133.40	7,452.1	-3,919.1	3,888.4	5,520.7	1.87	0.00	-1.88
11,750.0	89.20	132.40	7,453.1	-3,940.9	3,911.8	5,552.7	6.71	5.94	-3.13
11,783.0	90.60	134.90	7,453.1	-3,963.6	3,935.7	5,585.7	8.68	4.24	7.58
11,847.0	90.40	134.30	7,452.6	-4,008.6	3,981.2	5,649.7	0.99	-0.31	-0.94
11,910.0	88.20	132.20	7,453.3	-4,051.7	4,027.1	5,712.6	4.83	-3.49	-3.33
11,942.0	88.10	131.10	7,454.4	-4,073.0	4,051.0	5,744.5	3.45	-0.31	-3.44
Projection to Bit @ 11989' MD / 7456' TVD									
11,989.0	88.10	131.10	7,455.9	-4,103.9	4,086.4	5,791.4	0.00	0.00	0.00

Company:	EOG Resources, Inc - RM	Local Co-ordinate Reference:	Well Critter Creek #23-19H
Project:	Weld County, CO	TVD Reference:	WELL @ 5312.0usft (SST #53)
Site:	Sec. 19, T11N, R63W, 6th P.M.	MD Reference:	WELL @ 5312.0usft (SST #53)
Well:	Critter Creek #23-19H	North Reference:	True
Wellbore:	Wellbore #1	Survey Calculation Method:	Minimum Curvature
Design:	Wellbore #1	Database:	EDM 5000.1 Single User Db

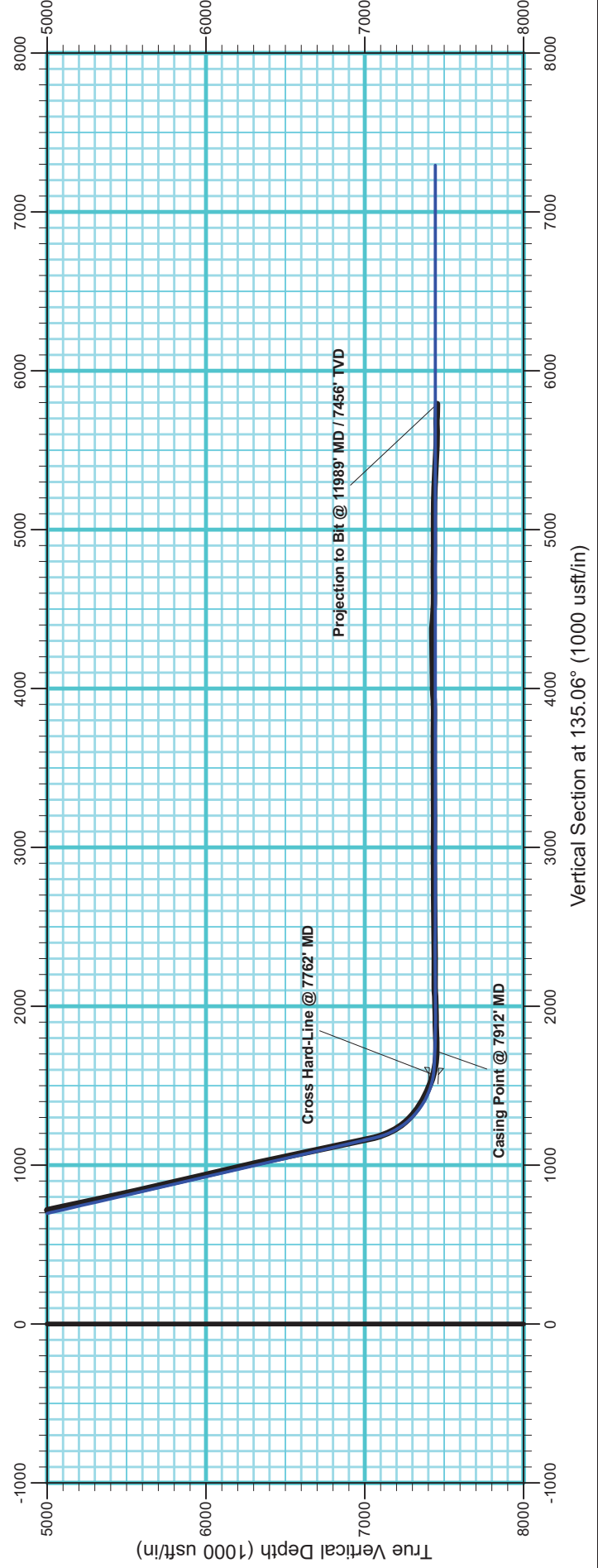
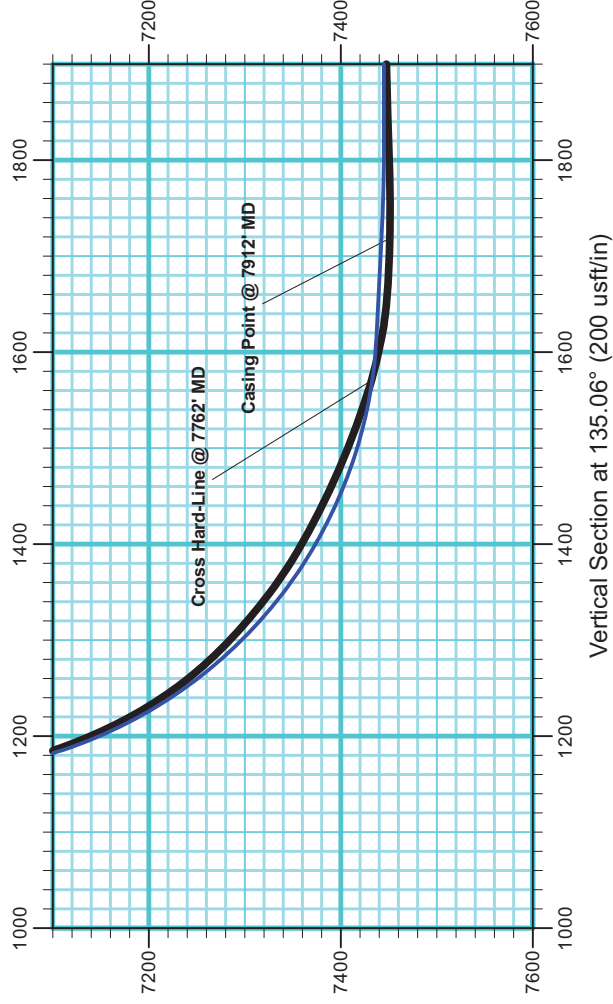
Casing Points				
Measured Depth (usft)	Vertical Depth (usft)	Name	Casing Diameter (")	Hole Diameter (")
7,912.0	7,451.2	7"	7	8-3/4

Survey Annotations				
Measured Depth (usft)	Vertical Depth (usft)	Local Coordinates		Comment
		+N/-S (usft)	+E/-W (usft)	
1,433.0	1,433.0	0.7	3.0	Tie-In to Gyro
5,015.0	4,937.0	-497.8	496.8	Cross Section-Line @ 5015' MD
5,060.0	4,981.0	-504.4	503.9	Cross Section-Line @ 5060' MD
7,762.0	7,431.9	-1,119.6	1,101.4	Cross Hard-Line @ 7762' MD
7,912.0	7,451.2	-1,221.7	1,208.9	Casing Point @ 7912' MD
11,989.0	7,455.9	-4,103.9	4,086.4	Projection to Bit @ 11989' MD / 7456' TVD

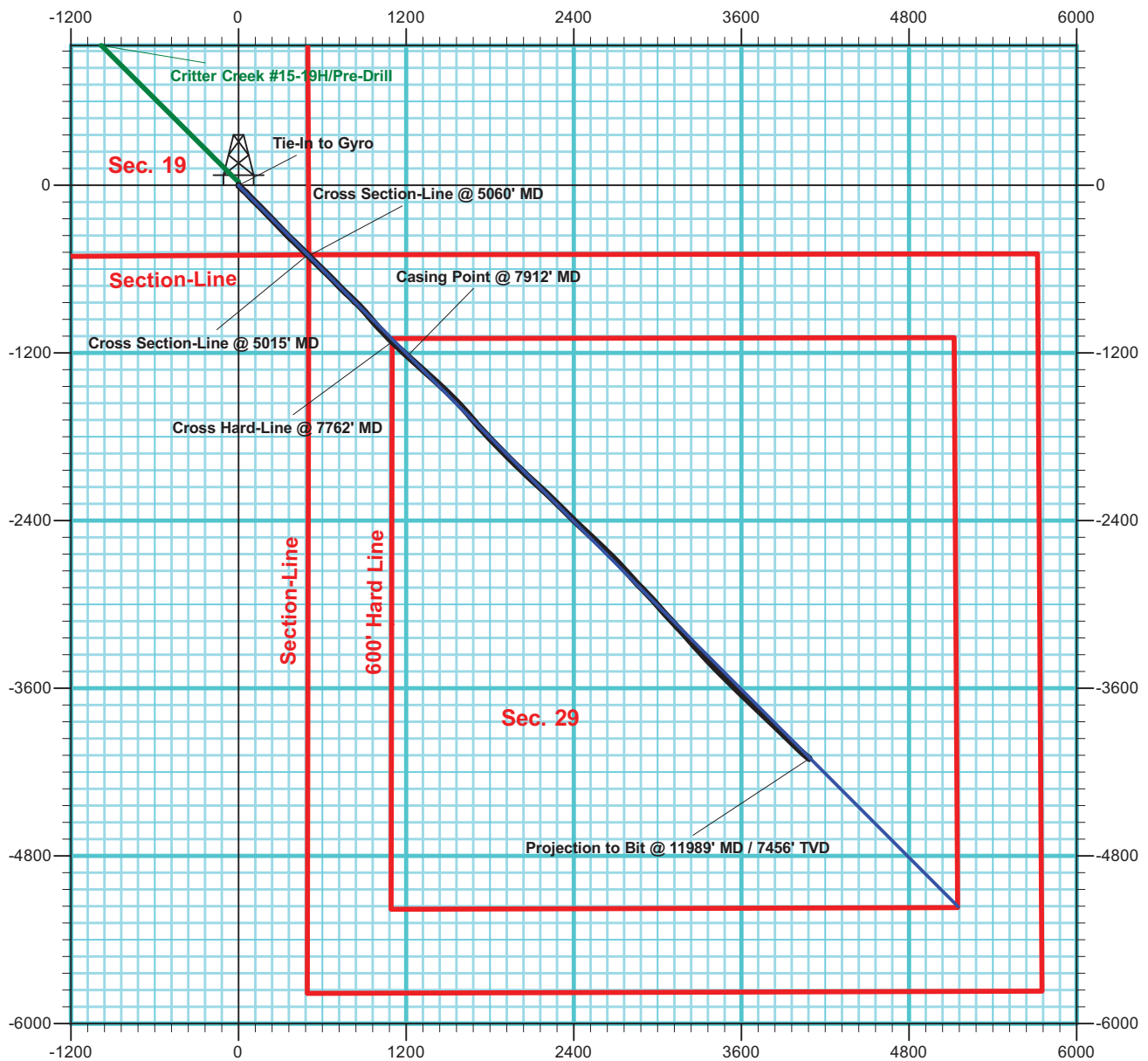
Checked By: _____	Approved By: _____	Date: _____
-------------------	--------------------	-------------



Weld County, CO
Sec. 19, T11N, R63W, 6th P.M.
Crittter Creek #23-19H
Wellbore #1
Pre-Drill Rev #1



Weld County, CO
Sec. 19, T11N, R63W, 6th P.M.
Crittter Creek #23-19H
Wellbore #1
Pre-Drill Rev #1





Weld County, CO
Sec. 19, T11N, R63W, 6th P.M.
Crittter Creek #23-19H
Wellbore #1
Pre-Drill Rev #1

