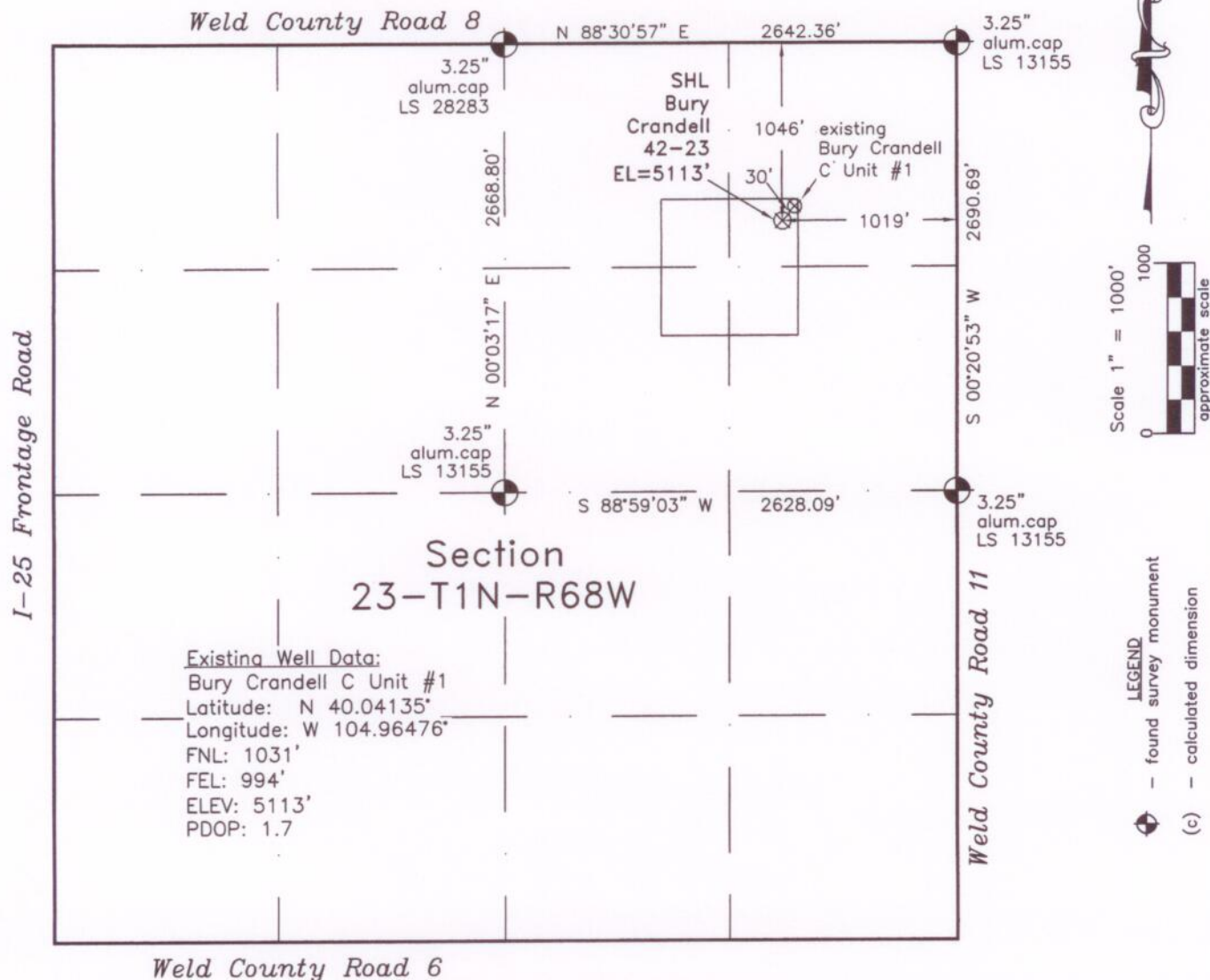


**WELL LOCATION CERTIFICATE***THIS MAP DOES NOT REPRESENT A BOUNDARY SURVEY*

In accordance with a request from Doug Pearlman of EnCana Oil & Gas (USA) Inc., Frederick Land Surveying, Inc. has determined the location of the **Bury Crandell 42-23** well site to be SHL: 1046' FNL and 1019' FEL, as measured at ninety (90) degrees from the section lines of Section 23, Township 1 North, Range 68 West, 6th Principal Meridian, City and County of Broomfield, CO.

Proposed Surface Hole Data:

Latitude: N 40.04131°

Longitude: W 104.96485°

Nearest: Building 1242' north

Public Road 1010' east

Property Line 978' east

PDOP: 1.6

Above Ground Utility 997' east

Railroad 426' northeast

I hereby certify that this Well Location Certificate was prepared by me or under my direct supervision on 9/29/10 for and on behalf of EnCana Oil & Gas (USA) Inc. that it is a Land Survey Plat and that it is not to be relied upon for establishment of fences, buildings, or other future improvement lines.

Alex Ronald Perkins LS#34176

Job #: 08088.076

10-6-2010