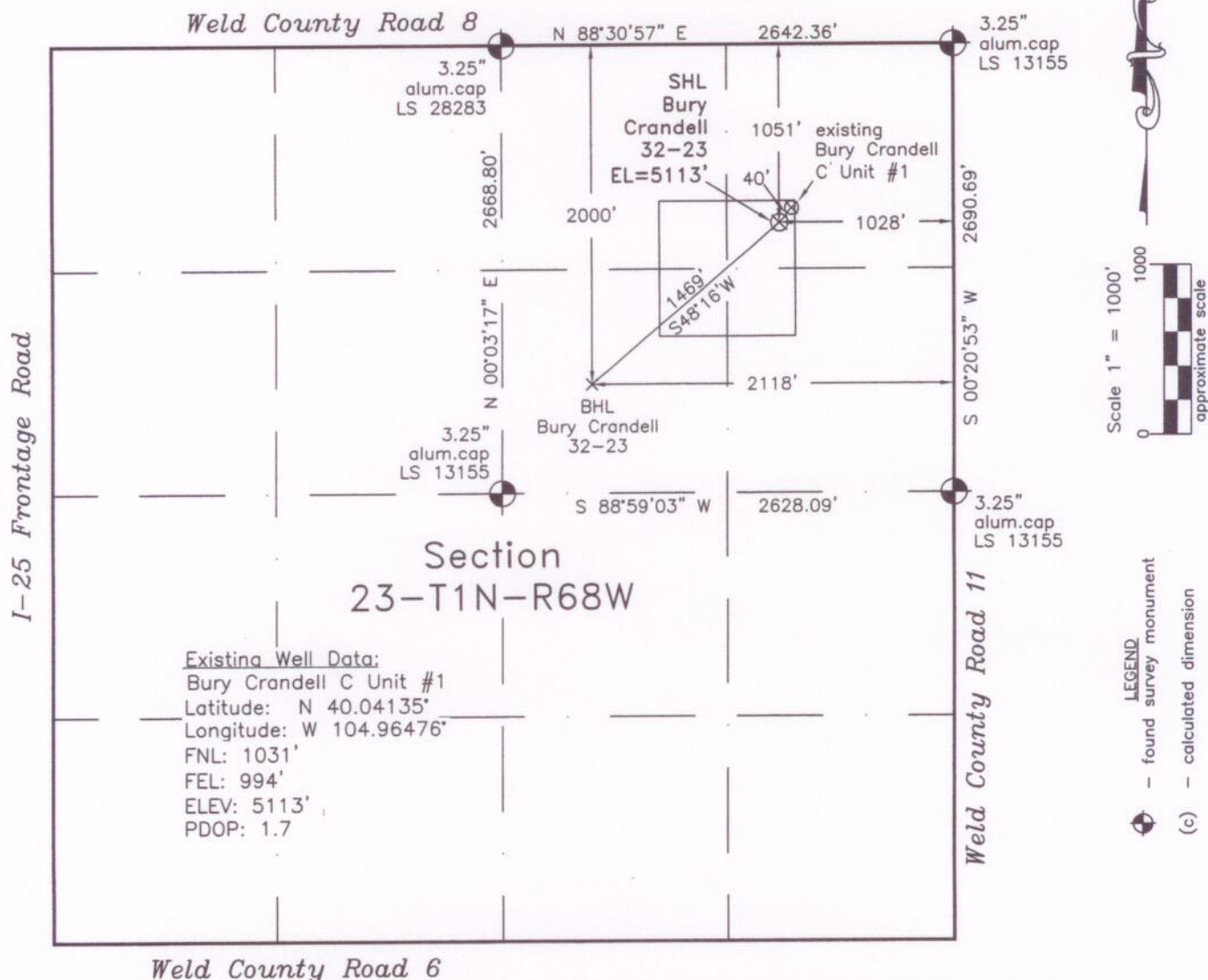


WELL LOCATION CERTIFICATE*THIS MAP DOES NOT REPRESENT A BOUNDARY SURVEY*

In accordance with a request from Doug Pearlman of EnCana Oil & Gas (USA) Inc., Frederick Land Surveying, Inc. has determined the location of the **Bury Crandell 32-23** well site to be SHL: 1051' FNL and 1028' FEL, (BHL: 2000' FNL and 2118' FEL) as measured at ninety (90) degrees from the section lines of Section 23, Township 1 North, Range 68 West, 6th Principal Meridian, City and County of Broomfield, CO.

Proposed Surface Hole Data:

Latitude: N 40.04129° (BHL 40.03863°)

Longitude: W 104.96489° (BHL 104.96882°)

Nearest: Building 1246' north Above Ground Utility 1005' east

Public Road 1019' east Railroad 435' northeast

Property Line 986' east

PDOP: 1.7

I hereby certify that this Well Location Certificate was prepared by me or under my direct supervision on 9/29/10 for and on behalf of EnCana Oil & Gas (USA) Inc. that it is not a Land Survey plat nor an Improvement Survey plat and that it is not to be relied upon for establishment of fences, buildings, or other future improvement lines.

Alex Ronald Perkins #34176
 Job #: 08088.075 10-6-2010