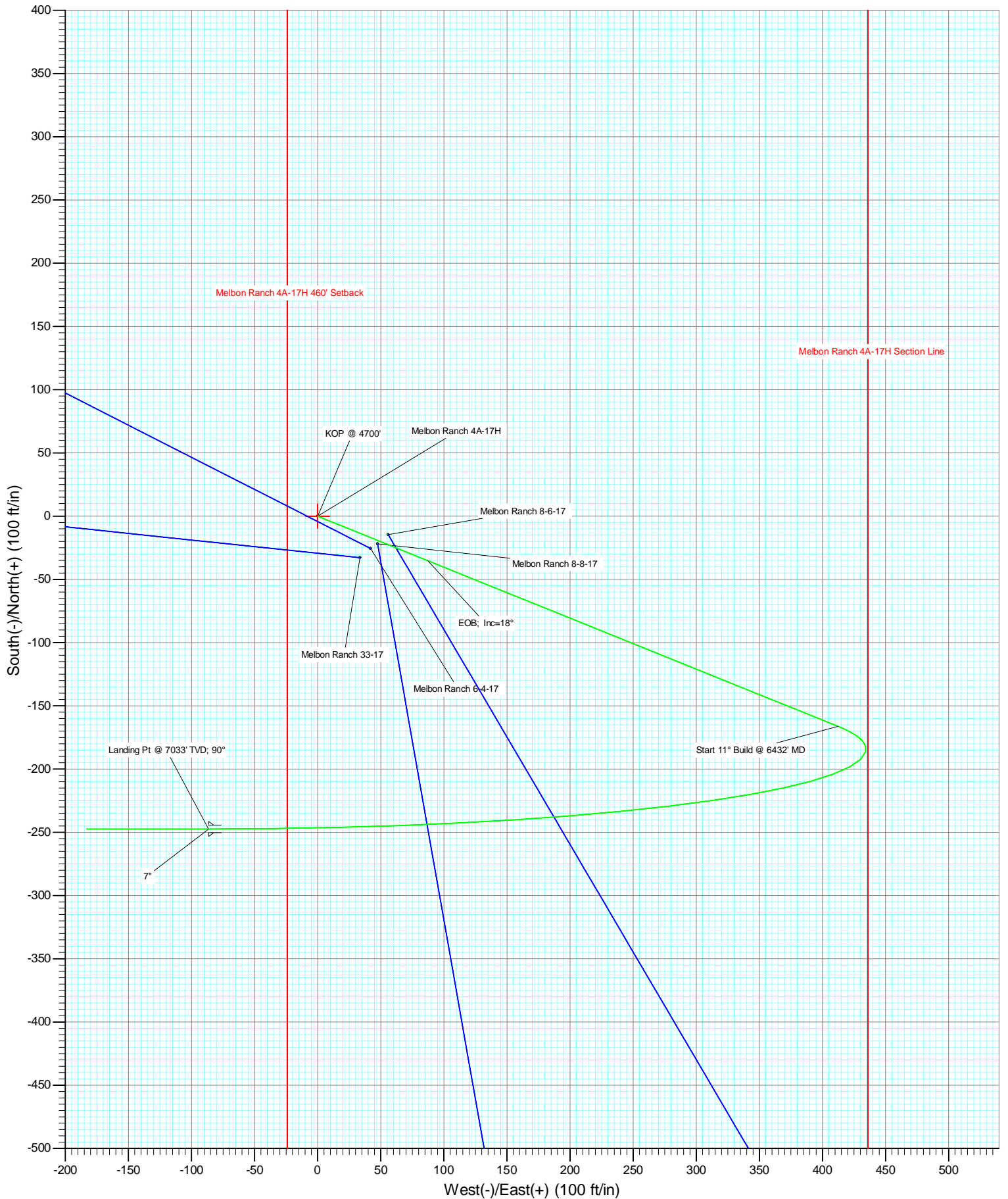


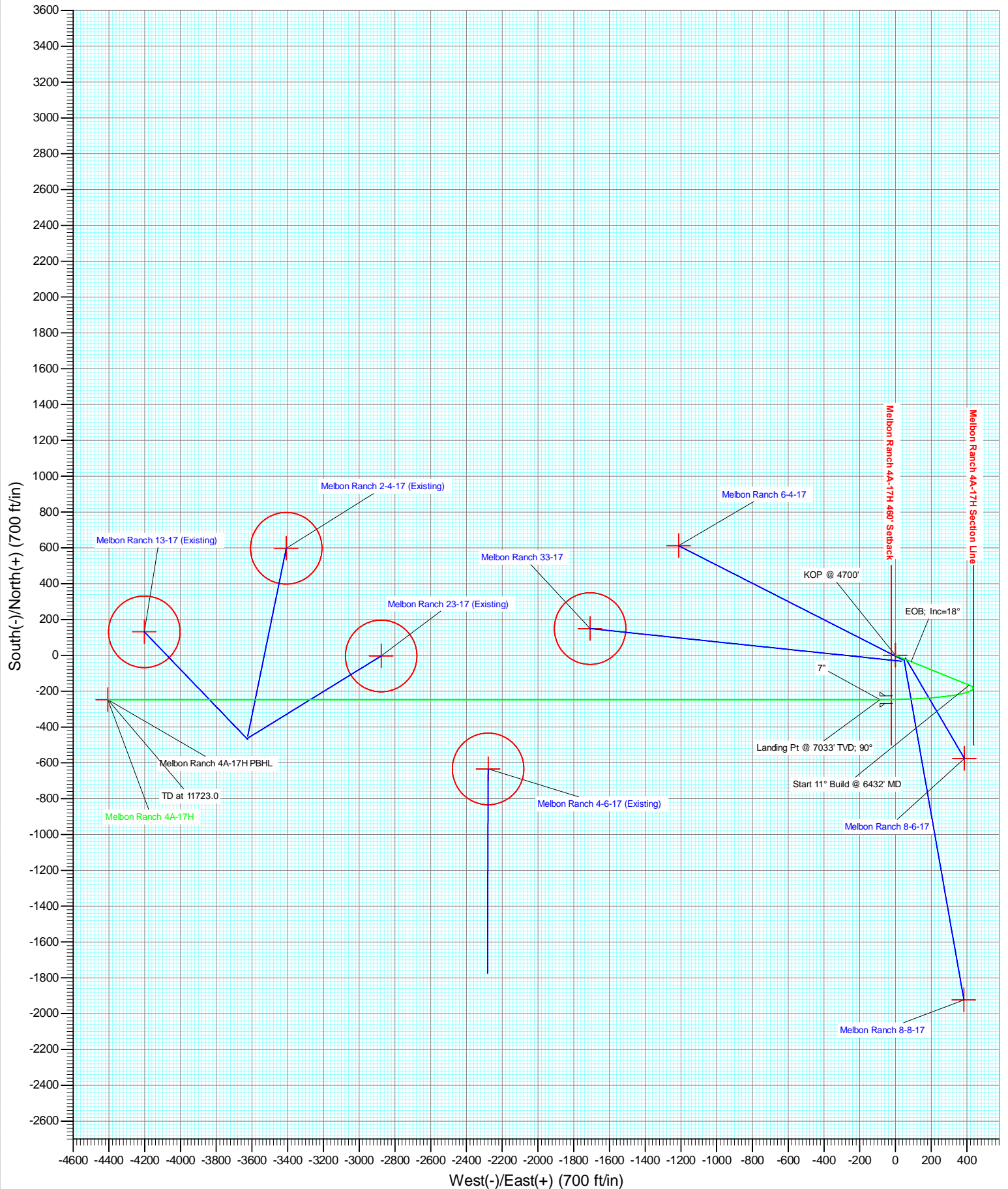


Project: DJ Wattenberg
Site: NESE S17-T2N-R65W (Melbon Ranch)
Well: Melbon Ranch 4A-17H
Wellbore: HZ
Design: Plan #2





Project: DJ Wattenberg
Site: NESE S17-T2N-R65W (Melbon Ranch)
Well: Melbon Ranch 4A-17H
Wellbore: HZ
Design: Plan #2



Planning Report

Database:	USA EDM 5000 Multi Users DB	Local Co-ordinate Reference:	Well Melbon Ranch 4A-17H
Company:	EnCana Oil & Gas (USA) Inc	TVD Reference:	KBE @ 4913.0ft (Original Well Elev)
Project:	DJ Wattenberg	MD Reference:	KBE @ 4913.0ft (Original Well Elev)
Site:	NESE S17-T2N-R65W (Melbon Ranch)	North Reference:	True
Well:	Melbon Ranch 4A-17H	Survey Calculation Method:	Minimum Curvature
Wellbore:	HZ		
Design:	Plan #2		

Project	DJ Wattenberg		
Map System:	US State Plane 1983	System Datum:	Mean Sea Level
Geo Datum:	North American Datum 1983		
Map Zone:	Colorado Northern Zone		

Site		NESE S17-T2N-R65W (Melbon Ranch)			
Site Position:		Northing:	1,293,771.71 ft	Latitude:	40.136880
From:	Lat/Long	Easting:	3,229,276.43 ft	Longitude:	-104.679970
Position Uncertainty:	0.0 ft	Slot Radius:	13.200 in	Grid Convergence:	0.53 °

Well	Melbon Ranch 4A-17H					
Well Position	+N/-S	0.0 ft	Northing:	1,293,771.71 ft	Latitude:	40.136880
	+E/-W	0.0 ft	Easting:	3,229,276.43 ft	Longitude:	-104.679970
Position Uncertainty		0.0 ft	Wellhead Elevation:	ft	Ground Level:	4,901.0 ft

Wellbore	HZ				
Magnetics	Model Name	Sample Date	Declination (°)	Dip Angle (°)	Field Strength (nT)
	IGRF200510	9/21/2011	8.72	66.85	52,996

Design	Plan #2			
Audit Notes:				
Version:	Phase:	PLAN	Tie On Depth:	0.0
Vertical Section:	Depth From (TVD) (ft)	+N/-S (ft)	+E/-W (ft)	Direction (°)
	0.0	0.0	0.0	266.79

Plan Sections										
Measured Depth (ft)	Inclination (°)	Azimuth (°)	Vertical Depth (ft)	+N/-S (ft)	+E/-W (ft)	Dogleg Rate (°/100ft)	Build Rate (°/100ft)	Turn Rate (°/100ft)	TFO (°)	Target
0.0	0.00	0.00	0.0	0.0	0.0	0.00	0.00	0.00	0.00	
4,700.0	0.00	0.00	4,700.0	0.0	0.0	0.00	0.00	0.00	0.00	
5,302.0	18.06	111.95	5,292.1	-35.2	87.3	3.00	3.00	0.00	111.95	
6,432.9	18.06	111.95	6,367.3	-166.2	412.5	0.00	0.00	0.00	0.00	
7,403.0	90.00	270.00	7,033.0	-247.3	-86.4	11.00	7.42	16.29	157.03	
11,723.0	90.00	270.00	7,033.0	-247.3	-4,406.4	0.00	0.00	0.00	0.00	Melbon Ranch 4A-17I

Planning Report

Database:	USA EDM 5000 Multi Users DB	Local Co-ordinate Reference:	Well Melbon Ranch 4A-17H
Company:	EnCana Oil & Gas (USA) Inc	TVD Reference:	KBE @ 4913.0ft (Original Well Elev)
Project:	DJ Wattenberg	MD Reference:	KBE @ 4913.0ft (Original Well Elev)
Site:	NESE S17-T2N-R65W (Melbon Ranch)	North Reference:	True
Well:	Melbon Ranch 4A-17H	Survey Calculation Method:	Minimum Curvature
Wellbore:	HZ		
Design:	Plan #2		

Planned Survey									
Measured Depth (ft)	Inclination (°)	Azimuth (°)	Vertical Depth (ft)	+N/-S (ft)	+E/-W (ft)	Vertical Section (ft)	Dogleg Rate (°/100ft)	Build Rate (°/100ft)	Comments / Formations
0.0	0.00	0.00	0.0	0.0	0.0	0.0	0.00	0.00	Melbon Ranch 4A-17H Section Line - Melbon R
100.0	0.00	0.00	100.0	0.0	0.0	0.0	0.00	0.00	
200.0	0.00	0.00	200.0	0.0	0.0	0.0	0.00	0.00	
300.0	0.00	0.00	300.0	0.0	0.0	0.0	0.00	0.00	
400.0	0.00	0.00	400.0	0.0	0.0	0.0	0.00	0.00	
500.0	0.00	0.00	500.0	0.0	0.0	0.0	0.00	0.00	
600.0	0.00	0.00	600.0	0.0	0.0	0.0	0.00	0.00	
700.0	0.00	0.00	700.0	0.0	0.0	0.0	0.00	0.00	
800.0	0.00	0.00	800.0	0.0	0.0	0.0	0.00	0.00	
900.0	0.00	0.00	900.0	0.0	0.0	0.0	0.00	0.00	
1,000.0	0.00	0.00	1,000.0	0.0	0.0	0.0	0.00	0.00	
1,100.0	0.00	0.00	1,100.0	0.0	0.0	0.0	0.00	0.00	
1,200.0	0.00	0.00	1,200.0	0.0	0.0	0.0	0.00	0.00	
1,300.0	0.00	0.00	1,300.0	0.0	0.0	0.0	0.00	0.00	
1,400.0	0.00	0.00	1,400.0	0.0	0.0	0.0	0.00	0.00	
1,500.0	0.00	0.00	1,500.0	0.0	0.0	0.0	0.00	0.00	
1,600.0	0.00	0.00	1,600.0	0.0	0.0	0.0	0.00	0.00	
1,700.0	0.00	0.00	1,700.0	0.0	0.0	0.0	0.00	0.00	
1,800.0	0.00	0.00	1,800.0	0.0	0.0	0.0	0.00	0.00	
1,900.0	0.00	0.00	1,900.0	0.0	0.0	0.0	0.00	0.00	
2,000.0	0.00	0.00	2,000.0	0.0	0.0	0.0	0.00	0.00	
2,100.0	0.00	0.00	2,100.0	0.0	0.0	0.0	0.00	0.00	
2,200.0	0.00	0.00	2,200.0	0.0	0.0	0.0	0.00	0.00	
2,300.0	0.00	0.00	2,300.0	0.0	0.0	0.0	0.00	0.00	
2,400.0	0.00	0.00	2,400.0	0.0	0.0	0.0	0.00	0.00	
2,500.0	0.00	0.00	2,500.0	0.0	0.0	0.0	0.00	0.00	
2,600.0	0.00	0.00	2,600.0	0.0	0.0	0.0	0.00	0.00	
2,700.0	0.00	0.00	2,700.0	0.0	0.0	0.0	0.00	0.00	
2,800.0	0.00	0.00	2,800.0	0.0	0.0	0.0	0.00	0.00	
2,900.0	0.00	0.00	2,900.0	0.0	0.0	0.0	0.00	0.00	
3,000.0	0.00	0.00	3,000.0	0.0	0.0	0.0	0.00	0.00	
3,100.0	0.00	0.00	3,100.0	0.0	0.0	0.0	0.00	0.00	
3,200.0	0.00	0.00	3,200.0	0.0	0.0	0.0	0.00	0.00	
3,300.0	0.00	0.00	3,300.0	0.0	0.0	0.0	0.00	0.00	
3,400.0	0.00	0.00	3,400.0	0.0	0.0	0.0	0.00	0.00	
3,500.0	0.00	0.00	3,500.0	0.0	0.0	0.0	0.00	0.00	
3,600.0	0.00	0.00	3,600.0	0.0	0.0	0.0	0.00	0.00	
3,700.0	0.00	0.00	3,700.0	0.0	0.0	0.0	0.00	0.00	
3,800.0	0.00	0.00	3,800.0	0.0	0.0	0.0	0.00	0.00	
3,900.0	0.00	0.00	3,900.0	0.0	0.0	0.0	0.00	0.00	
4,000.0	0.00	0.00	4,000.0	0.0	0.0	0.0	0.00	0.00	
4,100.0	0.00	0.00	4,100.0	0.0	0.0	0.0	0.00	0.00	
4,200.0	0.00	0.00	4,200.0	0.0	0.0	0.0	0.00	0.00	
4,300.0	0.00	0.00	4,300.0	0.0	0.0	0.0	0.00	0.00	
4,400.0	0.00	0.00	4,400.0	0.0	0.0	0.0	0.00	0.00	
4,428.0	0.00	0.00	4,428.0	0.0	0.0	0.0	0.00	0.00	Sussex
4,500.0	0.00	0.00	4,500.0	0.0	0.0	0.0	0.00	0.00	
4,600.0	0.00	0.00	4,600.0	0.0	0.0	0.0	0.00	0.00	
4,651.0	0.00	0.00	4,651.0	0.0	0.0	0.0	0.00	0.00	Sussex Marker
4,700.0	0.00	0.00	4,700.0	0.0	0.0	0.0	0.00	0.00	KOP @ 4700'
4,800.0	3.00	111.95	4,800.0	-1.0	2.4	-2.4	3.00	3.00	
4,900.0	6.00	111.95	4,899.6	-3.9	9.7	-9.5	3.00	3.00	

Planning Report

Database:	USA EDM 5000 Multi Users DB	Local Co-ordinate Reference:	Well Melbon Ranch 4A-17H
Company:	EnCana Oil & Gas (USA) Inc	TVD Reference:	KBE @ 4913.0ft (Original Well Elev)
Project:	DJ Wattenberg	MD Reference:	KBE @ 4913.0ft (Original Well Elev)
Site:	NESE S17-T2N-R65W (Melbon Ranch)	North Reference:	True
Well:	Melbon Ranch 4A-17H	Survey Calculation Method:	Minimum Curvature
Wellbore:	HZ		
Design:	Plan #2		

Planned Survey									
Measured Depth (ft)	Inclination (°)	Azimuth (°)	Vertical Depth (ft)	+N/-S (ft)	+E/-W (ft)	Vertical Section (ft)	Dogleg Rate (°/100ft)	Build Rate (°/100ft)	Comments / Formations
5,000.0	9.00	111.95	4,998.8	-8.8	21.8	-21.3	3.00	3.00	
5,100.0	12.00	111.95	5,097.1	-15.6	38.7	-37.8	3.00	3.00	
5,200.0	15.00	111.95	5,194.3	-24.3	60.4	-58.9	3.00	3.00	
5,300.0	18.00	111.95	5,290.2	-34.9	86.7	-84.6	3.00	3.00	
5,302.0	18.06	111.95	5,292.1	-35.2	87.3	-85.2	3.00	3.00	EOB; Inc=18°
5,335.6	18.06	111.95	5,324.0	-39.1	96.9	-94.6	0.00	0.00	Shannon
5,400.0	18.06	111.95	5,385.3	-46.5	115.5	-112.7	0.00	0.00	
5,500.0	18.06	111.95	5,480.3	-58.1	144.2	-140.7	0.00	0.00	
5,600.0	18.06	111.95	5,575.4	-69.7	173.0	-168.8	0.00	0.00	
5,700.0	18.06	111.95	5,670.5	-81.3	201.7	-196.8	0.00	0.00	
5,800.0	18.06	111.95	5,765.5	-92.9	230.5	-224.9	0.00	0.00	
5,900.0	18.06	111.95	5,860.6	-104.4	259.2	-253.0	0.00	0.00	
6,000.0	18.06	111.95	5,955.7	-116.0	288.0	-281.0	0.00	0.00	
6,100.0	18.06	111.95	6,050.8	-127.6	316.7	-309.1	0.00	0.00	
6,200.0	18.06	111.95	6,145.8	-139.2	345.5	-337.1	0.00	0.00	
6,300.0	18.06	111.95	6,240.9	-150.8	374.2	-365.2	0.00	0.00	
6,400.0	18.06	111.95	6,336.0	-162.4	403.0	-393.3	0.00	0.00	
6,432.9	18.06	111.95	6,367.3	-166.2	412.5	-402.5	0.00	0.00	Start 11° Build @ 6432' MD
6,500.0	11.62	126.36	6,432.1	-174.1	427.6	-417.1	11.00	-9.61	
6,600.0	7.14	193.54	6,531.0	-186.1	434.2	-423.1	11.00	-4.47	
6,700.0	14.42	241.71	6,629.3	-198.1	421.8	-410.0	11.00	7.28	
6,800.0	24.61	254.57	6,723.5	-209.6	390.6	-378.3	11.00	10.19	
6,900.0	35.27	260.08	6,810.1	-220.1	342.0	-329.1	11.00	10.66	
7,000.0	46.08	263.26	6,885.8	-229.4	277.6	-264.3	11.00	10.81	
7,036.2	50.01	264.13	6,910.0	-232.3	250.8	-237.4	11.00	10.85	Sharon Springs
7,100.0	56.94	265.45	6,947.9	-237.0	199.8	-186.2	11.00	10.87	
7,132.9	60.52	266.05	6,965.0	-239.0	171.8	-158.1	11.00	10.89	Niobrara
7,200.0	67.84	267.16	6,994.2	-242.6	111.5	-97.7	11.00	10.90	
7,300.0	78.75	268.61	7,022.9	-246.1	15.9	-2.1	11.00	10.91	
7,400.0	89.67	269.96	7,033.0	-247.3	-83.4	97.1	11.00	10.92	
7,402.9	89.98	270.00	7,033.0	-247.3	-86.3	100.0	11.00	10.92	Target
7,403.0	90.00	270.00	7,033.0	-247.3	-86.4	100.1	11.00	10.92	Landing Pt @ 7033' TVD; 90° - 7"
7,500.0	90.00	270.00	7,033.0	-247.3	-183.4	197.0	0.00	0.00	
7,600.0	90.00	270.00	7,033.0	-247.3	-283.4	296.8	0.00	0.00	
7,700.0	90.00	270.00	7,033.0	-247.3	-383.4	396.7	0.00	0.00	
7,800.0	90.00	270.00	7,033.0	-247.3	-483.4	496.5	0.00	0.00	
7,900.0	90.00	270.00	7,033.0	-247.3	-583.4	596.3	0.00	0.00	
8,000.0	90.00	270.00	7,033.0	-247.3	-683.4	696.2	0.00	0.00	
8,100.0	90.00	270.00	7,033.0	-247.3	-783.4	796.0	0.00	0.00	
8,200.0	90.00	270.00	7,033.0	-247.3	-883.4	895.9	0.00	0.00	
8,300.0	90.00	270.00	7,033.0	-247.3	-983.4	995.7	0.00	0.00	
8,400.0	90.00	270.00	7,033.0	-247.3	-1,083.4	1,095.6	0.00	0.00	
8,500.0	90.00	270.00	7,033.0	-247.3	-1,183.4	1,195.4	0.00	0.00	
8,600.0	90.00	270.00	7,033.0	-247.3	-1,283.4	1,295.2	0.00	0.00	
8,700.0	90.00	270.00	7,033.0	-247.3	-1,383.4	1,395.1	0.00	0.00	
8,800.0	90.00	270.00	7,033.0	-247.3	-1,483.4	1,494.9	0.00	0.00	
8,900.0	90.00	270.00	7,033.0	-247.3	-1,583.4	1,594.8	0.00	0.00	
9,000.0	90.00	270.00	7,033.0	-247.3	-1,683.4	1,694.6	0.00	0.00	
9,100.0	90.00	270.00	7,033.0	-247.3	-1,783.4	1,794.5	0.00	0.00	
9,200.0	90.00	270.00	7,033.0	-247.3	-1,883.4	1,894.3	0.00	0.00	
9,300.0	90.00	270.00	7,033.0	-247.3	-1,983.4	1,994.1	0.00	0.00	
9,400.0	90.00	270.00	7,033.0	-247.3	-2,083.4	2,094.0	0.00	0.00	

Planning Report

Database:	USA EDM 5000 Multi Users DB	Local Co-ordinate Reference:	Well Melbon Ranch 4A-17H
Company:	EnCana Oil & Gas (USA) Inc	TVD Reference:	KBE @ 4913.0ft (Original Well Elev)
Project:	DJ Wattenberg	MD Reference:	KBE @ 4913.0ft (Original Well Elev)
Site:	NESE S17-T2N-R65W (Melbon Ranch)	North Reference:	True
Well:	Melbon Ranch 4A-17H	Survey Calculation Method:	Minimum Curvature
Wellbore:	HZ		
Design:	Plan #2		

Planned Survey

Measured Depth (ft)	Inclination (°)	Azimuth (°)	Vertical Depth (ft)	+N/-S (ft)	+E/-W (ft)	Vertical Section (ft)	Dogleg Rate (°/100ft)	Build Rate (°/100ft)	Comments / Formations
9,500.0	90.00	270.00	7,033.0	-247.3	-2,183.4	2,193.8	0.00	0.00	
9,600.0	90.00	270.00	7,033.0	-247.3	-2,283.4	2,293.7	0.00	0.00	
9,700.0	90.00	270.00	7,033.0	-247.3	-2,383.4	2,393.5	0.00	0.00	
9,800.0	90.00	270.00	7,033.0	-247.3	-2,483.4	2,493.4	0.00	0.00	
9,900.0	90.00	270.00	7,033.0	-247.3	-2,583.4	2,593.2	0.00	0.00	
10,000.0	90.00	270.00	7,033.0	-247.3	-2,683.4	2,693.0	0.00	0.00	
10,100.0	90.00	270.00	7,033.0	-247.3	-2,783.4	2,792.9	0.00	0.00	
10,200.0	90.00	270.00	7,033.0	-247.3	-2,883.4	2,892.7	0.00	0.00	
10,300.0	90.00	270.00	7,033.0	-247.3	-2,983.4	2,992.6	0.00	0.00	
10,400.0	90.00	270.00	7,033.0	-247.3	-3,083.4	3,092.4	0.00	0.00	
10,500.0	90.00	270.00	7,033.0	-247.3	-3,183.4	3,192.3	0.00	0.00	
10,600.0	90.00	270.00	7,033.0	-247.3	-3,283.4	3,292.1	0.00	0.00	
10,700.0	90.00	270.00	7,033.0	-247.3	-3,383.4	3,391.9	0.00	0.00	
10,800.0	90.00	270.00	7,033.0	-247.3	-3,483.4	3,491.8	0.00	0.00	
10,900.0	90.00	270.00	7,033.0	-247.3	-3,583.4	3,591.6	0.00	0.00	
11,000.0	90.00	270.00	7,033.0	-247.3	-3,683.4	3,691.5	0.00	0.00	
11,100.0	90.00	270.00	7,033.0	-247.3	-3,783.4	3,791.3	0.00	0.00	
11,200.0	90.00	270.00	7,033.0	-247.3	-3,883.4	3,891.2	0.00	0.00	
11,300.0	90.00	270.00	7,033.0	-247.3	-3,983.4	3,991.0	0.00	0.00	
11,400.0	90.00	270.00	7,033.0	-247.3	-4,083.4	4,090.8	0.00	0.00	
11,500.0	90.00	270.00	7,033.0	-247.3	-4,183.4	4,190.7	0.00	0.00	
11,600.0	90.00	270.00	7,033.0	-247.3	-4,283.4	4,290.5	0.00	0.00	
11,700.0	90.00	270.00	7,033.0	-247.3	-4,383.4	4,390.4	0.00	0.00	
11,723.0	90.00	270.00	7,033.0	-247.3	-4,406.4	4,413.3	0.00	0.00	TD at 11723.0 - Melbon Ranch 4A-17H PBHL

Targets

Target Name	- hit/miss target	- Shape	Dip Angle (°)	Dip Dir. (°)	TVD (ft)	+N/-S (ft)	+E/-W (ft)	Northing (ft)	Easting (ft)	Latitude	Longitude
Melbon Ranch 4A-17H E			0.00	0.00	-7,033.0	0.0	0.0	1,293,771.71	3,229,276.43	40.136880	-104.679970
- plan misses target center by 7033.0ft at 0.0ft MD (0.0 TVD, 0.0 N, 0.0 E)											
- Polygon											
Point 1					-7,033.0	500.0	436.0	1,294,275.72	3,229,707.79		
Point 2					-7,033.0	-500.0	436.0	1,293,275.76	3,229,717.04		
Melbon Ranch 4A-17H 4			0.00	0.00	-7,033.0	0.0	0.0	1,293,771.71	3,229,276.43	40.136880	-104.679970
- plan misses target center by 7033.0ft at 0.0ft MD (0.0 TVD, 0.0 N, 0.0 E)											
- Polygon											
Point 1					-7,033.0	500.0	-24.0	1,294,271.46	3,229,247.81		
Point 2					-7,033.0	-500.0	-24.0	1,293,271.51	3,229,257.06		
Melbon Ranch 4A-17H F			0.00	0.00	7,033.0	-247.3	-4,406.4	1,293,483.65	3,224,872.50	40.136200	-104.695730
- plan hits target center											
- Point											

Casing Points

Measured Depth (ft)	Vertical Depth (ft)	Name	Casing Diameter (in)	Hole Diameter (in)
7,403.0	7,033.0	7"	7.000	7.000

Planning Report

Database:	USA EDM 5000 Multi Users DB	Local Co-ordinate Reference:	Well Melbon Ranch 4A-17H
Company:	EnCana Oil & Gas (USA) Inc	TVD Reference:	KBE @ 4913.0ft (Original Well Elev)
Project:	DJ Wattenberg	MD Reference:	KBE @ 4913.0ft (Original Well Elev)
Site:	NESE S17-T2N-R65W (Melbon Ranch)	North Reference:	True
Well:	Melbon Ranch 4A-17H	Survey Calculation Method:	Minimum Curvature
Wellbore:	HZ		
Design:	Plan #2		

Formations						
Measured Depth (ft)	Vertical Depth (ft)	Name	Lithology	Dip (°)	Dip Direction (°)	
4,428.0	4,428.0	Sussex				
4,651.0	4,651.0	Sussex Marker				
5,335.6	5,324.0	Shannon				
7,036.2	6,910.0	Sharon Springs				
7,132.9	6,965.0	Niobrara				
7,402.9	7,033.0	Target				

Plan Annotations					
Measured Depth (ft)	Vertical Depth (ft)	Local Coordinates			
		+N/-S (ft)	+E/-W (ft)	Comment	
4,700.0	4,700.0	0.0	0.0	KOP @ 4700'	
5,302.0	5,292.1	-35.2	87.3	EOB; Inc=18°	
6,432.9	6,367.3	-166.2	412.5	Start 11° Build @ 6432' MD	
7,403.0	7,033.0	-247.3	-86.4	Landing Pt @ 7033' TVD; 90°	
11,723.0	7,033.0	-247.3	-4,406.4	TD at 11723.0	

EnCana Oil & Gas (USA) Inc

DJ Wattenberg

NESE S17-T2N-R65W (Melbon Ranch)

Melbon Ranch 4A-17H

HZ

Plan #2

Anticollision Report

22 September, 2011

Anticollision Report

Company:	EnCana Oil & Gas (USA) Inc	Local Co-ordinate Reference:	Well Melbon Ranch 4A-17H
Project:	DJ Wattenberg	TVD Reference:	KBE @ 4913.0ft (Original Well Elev)
Reference Site:	NESE S17-T2N-R65W (Melbon Ranch)	MD Reference:	KBE @ 4913.0ft (Original Well Elev)
Site Error:	0.0ft	North Reference:	True
Reference Well:	Melbon Ranch 4A-17H	Survey Calculation Method:	Minimum Curvature
Well Error:	0.0ft	Output errors are at	2.00 sigma
Reference Wellbore	HZ	Database:	USA EDM 5000 Multi Users DB
Reference Design:	Plan #2	Offset TVD Reference:	Offset Datum

Reference	Plan #2		
Filter type:	NO GLOBAL FILTER: Using user defined selection & filtering criteria		
Interpolation Method:	MD Interval 100.0ft	Error Model:	Systematic Ellipse
Depth Range:	Unlimited	Scan Method:	Closest Approach 3D
Results Limited by:	Maximum center-center distance of 1,367.7ft	Error Surface:	Elliptical Conic
Warning Levels Evaluated at:	2.00 Sigma		

Survey Tool Program	Date	9/22/2011		
From (ft)	To (ft)	Survey (Wellbore)	Tool Name	Description
0.0	11,723.0	Plan #2 (HZ)	MWD	Geolink MWD

Summary						
Site Name	Reference Measured Depth (ft)	Offset Measured Depth (ft)	Distance Between Centres (ft)	Distance Between Ellipses (ft)	Separation Factor	Warning
Offset Well - Wellbore - Design						
NESE S17-T2N-R65W (Melbon Ranch)						
Melbon Ranch 13-17 (Existing) - Wellbore #1 - Plan #1	11,518.8	7,147.8	378.8	254.1	3.036	CC, ES, SF
Melbon Ranch 23-17 (Existing) - Wellbore #1 - Plan #1	10,193.6	7,156.1	243.8	149.5	2.584	CC
Melbon Ranch 23-17 (Existing) - Wellbore #1 - Plan #1	10,200.0	7,156.1	243.9	149.4	2.581	ES, SF
Melbon Ranch 2-4-17 (Existing) - Wellbore #1 - Plan #1	10,724.7	7,200.7	845.0	742.7	8.265	CC, ES
Melbon Ranch 2-4-17 (Existing) - Wellbore #1 - Plan #1	10,900.0	7,200.7	863.0	756.4	8.100	SF
Melbon Ranch 33-17 - DD - Plan #1	643.6	659.6	29.1	26.9	12.807	CC, ES
Melbon Ranch 33-17 - DD - Plan #1	9,100.0	7,417.8	403.8	318.8	4.753	SF
Melbon Ranch 4-6-17 (Existing) - Wellbore #1 - Plan #1	9,595.3	7,219.1	386.4	312.2	5.209	CC
Melbon Ranch 4-6-17 (Existing) - Wellbore #1 - Plan #1	9,600.0	7,219.1	386.5	312.2	5.202	ES, SF
Melbon Ranch 6-4-17 - DD - Plan #1	713.3	730.3	3.8	1.2	1.478	Level 3, CC, ES, SF
Melbon Ranch 8-6-17 - DD - Plan #1	161.2	175.2	57.8	57.2	105.284	CC
Melbon Ranch 8-6-17 - DD - Plan #1	200.0	213.8	57.8	57.1	84.526	ES
Melbon Ranch 8-6-17 - DD - Plan #1	6,800.0	6,784.1	366.0	339.3	13.723	SF
Melbon Ranch 8-8-17 - DD - Plan #1	161.2	175.2	52.3	51.8	95.319	CC
Melbon Ranch 8-8-17 - DD - Plan #1	200.0	213.9	52.3	51.7	76.525	ES
Melbon Ranch 8-8-17 - DD - Plan #1	700.0	703.5	86.5	84.0	34.101	SF

Anticollision Report

Company:	EnCana Oil & Gas (USA) Inc	Local Co-ordinate Reference:	Well Melbon Ranch 4A-17H
Project:	DJ Wattenberg	TVD Reference:	KBE @ 4913.0ft (Original Well Elev)
Reference Site:	NESE S17-T2N-R65W (Melbon Ranch)	MD Reference:	KBE @ 4913.0ft (Original Well Elev)
Site Error:	0.0ft	North Reference:	True
Reference Well:	Melbon Ranch 4A-17H	Survey Calculation Method:	Minimum Curvature
Well Error:	0.0ft	Output errors are at	2.00 sigma
Reference Wellbore	HZ	Database:	USA EDM 5000 Multi Users DB
Reference Design:	Plan #2	Offset TVD Reference:	Offset Datum

Offset Design NESE S17-T2N-R65W (Melbon Ranch) - Melbon Ranch 13-17 (Existing) - Wellbore #1 - Plan #1													Offset Site Error: 0.0 ft	
Survey Program: 0-MWD													Offset Well Error: 0.0 ft	
Reference		Offset		Semi Major Axis			Distance						Warning	
Measured Depth (ft)	Vertical Depth (ft)	Measured Depth (ft)	Vertical Depth (ft)	Reference (ft)	Offset (ft)	Highside Toolface (°)	Offset Wellbore Centre +N/-S (ft) +E/-W (ft)		Between Centres (ft)	Between Ellipses (ft)	Total Uncertainty Axis	Separation Factor		
10,300.0	7,033.0	7,147.8	7,070.0	78.9	19.3	90.00	131.5	-4,202.2	1,276.4	1,181.5	94.88	13.452		
10,400.0	7,033.0	7,147.8	7,070.0	81.3	19.3	90.00	131.5	-4,202.2	1,181.2	1,083.9	97.33	12.137		
10,500.0	7,033.0	7,147.8	7,070.0	83.8	19.3	90.00	131.5	-4,202.2	1,087.0	987.2	99.77	10.895		
10,600.0	7,033.0	7,147.8	7,070.0	86.2	19.3	90.00	131.5	-4,202.2	993.9	891.7	102.22	9.723		
10,700.0	7,033.0	7,147.8	7,070.0	88.7	19.3	90.00	131.5	-4,202.2	902.2	797.6	104.67	8.620		
10,800.0	7,033.0	7,147.8	7,070.0	91.1	19.3	90.00	131.5	-4,202.2	812.6	705.4	107.11	7.586		
10,900.0	7,033.0	7,147.8	7,070.0	93.6	19.3	90.00	131.5	-4,202.2	725.6	616.0	109.57	6.622		
11,000.0	7,033.0	7,147.8	7,070.0	96.0	19.3	90.00	131.5	-4,202.2	642.4	530.4	112.02	5.735		
11,100.0	7,033.0	7,147.8	7,070.0	98.5	19.3	90.00	131.5	-4,202.2	564.7	450.3	114.47	4.934		
11,200.0	7,033.0	7,147.8	7,070.0	100.9	19.3	90.00	131.5	-4,202.2	495.1	378.2	116.92	4.235		
11,300.0	7,033.0	7,147.8	7,070.0	103.4	19.3	90.00	131.5	-4,202.2	437.5	318.1	119.38	3.665		
11,400.0	7,033.0	7,147.8	7,070.0	105.8	19.3	90.00	131.5	-4,202.2	397.0	275.2	121.83	3.259		
11,500.0	7,033.0	7,147.8	7,070.0	108.3	19.3	90.00	131.5	-4,202.2	379.3	255.0	124.29	3.052		
11,518.8	7,033.0	7,147.8	7,070.0	108.8	19.3	90.00	131.5	-4,202.2	378.8	254.1	124.75	3.036	CC, ES, SF	
11,600.0	7,033.0	7,147.8	7,070.0	110.7	19.3	90.00	131.5	-4,202.2	387.4	260.7	126.75	3.057		
11,700.0	7,033.0	7,147.8	7,070.0	113.2	19.3	90.00	131.5	-4,202.2	419.9	290.7	129.21	3.250		
11,723.0	7,033.0	7,147.8	7,070.0	113.8	19.3	90.00	131.5	-4,202.2	430.3	300.6	129.77	3.316		

Anticollision Report

Company:	EnCana Oil & Gas (USA) Inc	Local Co-ordinate Reference:	Well Melbon Ranch 4A-17H
Project:	DJ Wattenberg	TVD Reference:	KBE @ 4913.0ft (Original Well Elev)
Reference Site:	NESE S17-T2N-R65W (Melbon Ranch)	MD Reference:	KBE @ 4913.0ft (Original Well Elev)
Site Error:	0.0ft	North Reference:	True
Reference Well:	Melbon Ranch 4A-17H	Survey Calculation Method:	Minimum Curvature
Well Error:	0.0ft	Output errors are at	2.00 sigma
Reference Wellbore	HZ	Database:	USA EDM 5000 Multi Users DB
Reference Design:	Plan #2	Offset TVD Reference:	Offset Datum

Offset Design NESE S17-T2N-R65W (Melbon Ranch) - Melbon Ranch 23-17 (Existing) - Wellbore #1 - Plan #1													Offset Site Error:	0.0 ft
Survey Program: 0-MWD													Offset Well Error:	0.0 ft
Reference		Offset		Semi Major Axis			Distance							
Measured Depth	Vertical Depth	Measured Depth	Vertical Depth	Reference	Offset	Highside Toolface	Offset Wellbore Centre		Between Centres	Between Ellipses	Total Uncertainty Axis	Separation Factor	Warning	
(ft)	(ft)	(ft)	(ft)	(ft)	(ft)	(°)	+N/-S (ft)	+E/-W (ft)	(ft)	(ft)				
8,900.0	7,033.0	7,156.1	7,070.0	45.1	19.9	90.00	-3.5	-2,877.0	1,316.4	1,253.3	63.13	20.851		
9,000.0	7,033.0	7,156.1	7,070.0	47.5	19.9	90.00	-3.5	-2,877.0	1,218.3	1,152.7	65.51	18.596		
9,100.0	7,033.0	7,156.1	7,070.0	49.9	19.9	90.00	-3.5	-2,877.0	1,120.5	1,052.6	67.90	16.502		
9,200.0	7,033.0	7,156.1	7,070.0	52.3	19.9	90.00	-3.5	-2,877.0	1,023.1	952.8	70.29	14.555		
9,300.0	7,033.0	7,156.1	7,070.0	54.7	19.9	90.00	-3.5	-2,877.0	926.3	853.6	72.70	12.742		
9,400.0	7,033.0	7,156.1	7,070.0	57.1	19.9	90.00	-3.5	-2,877.0	830.2	755.1	75.10	11.054		
9,500.0	7,033.0	7,156.1	7,070.0	59.5	19.9	90.00	-3.5	-2,877.0	735.2	657.7	77.52	9.484		
9,600.0	7,033.0	7,156.1	7,070.0	61.9	19.9	90.00	-3.5	-2,877.0	641.7	561.8	79.94	8.028		
9,700.0	7,033.0	7,156.1	7,070.0	64.3	19.9	90.00	-3.5	-2,877.0	550.5	468.2	82.36	6.685		
9,800.0	7,033.0	7,156.1	7,070.0	66.7	19.9	90.00	-3.5	-2,877.0	463.0	378.2	84.79	5.461		
9,900.0	7,033.0	7,156.1	7,070.0	69.2	19.9	90.00	-3.5	-2,877.0	381.7	294.4	87.22	4.376		
10,000.0	7,033.0	7,156.1	7,070.0	71.6	19.9	90.00	-3.5	-2,877.0	311.4	221.7	89.65	3.473		
10,100.0	7,033.0	7,156.1	7,070.0	74.0	19.9	90.00	-3.5	-2,877.0	261.2	169.1	92.09	2.836		
10,193.6	7,033.0	7,156.1	7,070.0	76.3	19.9	90.00	-3.5	-2,877.0	243.8	149.5	94.37	2.584 CC		
10,200.0	7,033.0	7,156.1	7,070.0	76.5	19.9	90.00	-3.5	-2,877.0	243.9	149.4	94.52	2.581 ES, SF		
10,300.0	7,033.0	7,156.1	7,070.0	78.9	19.9	90.00	-3.5	-2,877.0	266.0	169.1	96.97	2.744		
10,400.0	7,033.0	7,156.1	7,070.0	81.3	19.9	90.00	-3.5	-2,877.0	319.5	220.1	99.41	3.214		
10,500.0	7,033.0	7,156.1	7,070.0	83.8	19.9	90.00	-3.5	-2,877.0	391.6	289.7	101.85	3.845		
10,600.0	7,033.0	7,156.1	7,070.0	86.2	19.9	90.00	-3.5	-2,877.0	473.9	369.6	104.30	4.544		
10,700.0	7,033.0	7,156.1	7,070.0	88.7	19.9	90.00	-3.5	-2,877.0	562.0	455.3	106.75	5.265		
10,800.0	7,033.0	7,156.1	7,070.0	91.1	19.9	90.00	-3.5	-2,877.0	653.6	544.4	109.20	5.985		
10,900.0	7,033.0	7,156.1	7,070.0	93.6	19.9	90.00	-3.5	-2,877.0	747.3	635.7	111.65	6.693		
11,000.0	7,033.0	7,156.1	7,070.0	96.0	19.9	90.00	-3.5	-2,877.0	842.5	728.4	114.10	7.384		
11,100.0	7,033.0	7,156.1	7,070.0	98.5	19.9	90.00	-3.5	-2,877.0	938.6	822.1	116.55	8.053		
11,200.0	7,033.0	7,156.1	7,070.0	100.9	19.9	90.00	-3.5	-2,877.0	1,035.5	916.5	119.01	8.701		
11,300.0	7,033.0	7,156.1	7,070.0	103.4	19.9	90.00	-3.5	-2,877.0	1,132.9	1,011.5	121.46	9.328		
11,400.0	7,033.0	7,156.1	7,070.0	105.8	19.9	90.00	-3.5	-2,877.0	1,230.8	1,106.9	123.92	9.932		
11,500.0	7,033.0	7,156.1	7,070.0	108.3	19.9	90.00	-3.5	-2,877.0	1,329.0	1,202.6	126.37	10.516		

Anticollision Report

Company:	EnCana Oil & Gas (USA) Inc	Local Co-ordinate Reference:	Well Melbon Ranch 4A-17H
Project:	DJ Wattenberg	TVD Reference:	KBE @ 4913.0ft (Original Well Elev)
Reference Site:	NESE S17-T2N-R65W (Melbon Ranch)	MD Reference:	KBE @ 4913.0ft (Original Well Elev)
Site Error:	0.0ft	North Reference:	True
Reference Well:	Melbon Ranch 4A-17H	Survey Calculation Method:	Minimum Curvature
Well Error:	0.0ft	Output errors are at	2.00 sigma
Reference Wellbore	HZ	Database:	USA EDM 5000 Multi Users DB
Reference Design:	Plan #2	Offset TVD Reference:	Offset Datum

Offset Design NESE S17-T2N-R65W (Melbon Ranch) - Melbon Ranch 2-4-17 (Existing) - Wellbore #1 - Plan #1											Offset Site Error:		0.0 ft
Survey Program: 0-MWD											Offset Well Error:		0.0 ft
Reference		Offset		Semi Major Axis			Distance						Warning
Measured Depth	Vertical Depth	Measured Depth	Vertical Depth	Reference	Offset	Highside Toolface	Offset Wellbore Centre		Between Centres	Between Ellipses	Total Uncertainty Axis	Separation Factor	
(ft)	(ft)	(ft)	(ft)	(ft)	(ft)	(°)	+N/-S (ft)	+E/-W (ft)	(ft)	(ft)			
9,700.0	7,033.0	7,200.7	7,070.0	64.3	22.5	90.00	597.7	-3,408.1	1,328.2	1,250.9	77.25	17.194	
9,800.0	7,033.0	7,200.7	7,070.0	66.7	22.5	90.00	597.7	-3,408.1	1,252.7	1,173.0	79.67	15.722	
9,900.0	7,033.0	7,200.7	7,070.0	69.2	22.5	90.00	597.7	-3,408.1	1,180.8	1,098.7	82.10	14.381	
10,000.0	7,033.0	7,200.7	7,070.0	71.6	22.5	90.00	597.7	-3,408.1	1,113.2	1,028.7	84.54	13.168	
10,100.0	7,033.0	7,200.7	7,070.0	74.0	22.5	90.00	597.7	-3,408.1	1,050.9	963.9	86.97	12.082	
10,200.0	7,033.0	7,200.7	7,070.0	76.5	22.5	90.00	597.7	-3,408.1	994.7	905.2	89.41	11.124	
10,300.0	7,033.0	7,200.7	7,070.0	78.9	22.5	90.00	597.7	-3,408.1	945.7	853.9	91.85	10.296	
10,400.0	7,033.0	7,200.7	7,070.0	81.3	22.5	90.00	597.7	-3,408.1	905.2	810.9	94.30	9.600	
10,500.0	7,033.0	7,200.7	7,070.0	83.8	22.5	90.00	597.7	-3,408.1	874.4	777.6	96.74	9.038	
10,600.0	7,033.0	7,200.7	7,070.0	86.2	22.5	90.00	597.7	-3,408.1	854.1	754.9	99.19	8.611	
10,700.0	7,033.0	7,200.7	7,070.0	88.7	22.5	90.00	597.7	-3,408.1	845.3	743.7	101.63	8.317	
10,724.7	7,033.0	7,200.7	7,070.0	89.3	22.5	90.00	597.7	-3,408.1	845.0	742.7	102.24	8.265 CC, ES	
10,800.0	7,033.0	7,200.7	7,070.0	91.1	22.5	90.00	597.7	-3,408.1	848.3	744.2	104.08	8.150	
10,900.0	7,033.0	7,200.7	7,070.0	93.6	22.5	90.00	597.7	-3,408.1	863.0	756.4	106.53	8.100 SF	
11,000.0	7,033.0	7,200.7	7,070.0	96.0	22.5	90.00	597.7	-3,408.1	888.7	779.7	108.99	8.154	
11,100.0	7,033.0	7,200.7	7,070.0	98.5	22.5	90.00	597.7	-3,408.1	924.6	813.1	111.44	8.297	
11,200.0	7,033.0	7,200.7	7,070.0	100.9	22.5	90.00	597.7	-3,408.1	969.5	855.6	113.89	8.512	
11,300.0	7,033.0	7,200.7	7,070.0	103.4	22.5	90.00	597.7	-3,408.1	1,022.2	905.9	116.35	8.786	
11,400.0	7,033.0	7,200.7	7,070.0	105.8	22.5	90.00	597.7	-3,408.1	1,081.6	962.8	118.80	9.104	
11,500.0	7,033.0	7,200.7	7,070.0	108.3	22.5	90.00	597.7	-3,408.1	1,146.7	1,025.5	121.26	9.457	
11,600.0	7,033.0	7,200.7	7,070.0	110.7	22.5	90.00	597.7	-3,408.1	1,216.6	1,092.9	123.72	9.833	
11,700.0	7,033.0	7,200.7	7,070.0	113.2	22.5	90.00	597.7	-3,408.1	1,290.4	1,164.2	126.18	10.227	
11,723.0	7,033.0	7,200.7	7,070.0	113.8	22.5	90.00	597.7	-3,408.1	1,307.9	1,181.1	126.74	10.319	

Anticollision Report

Company:	EnCana Oil & Gas (USA) Inc	Local Co-ordinate Reference:	Well Melbon Ranch 4A-17H
Project:	DJ Wattenberg	TVD Reference:	KBE @ 4913.0ft (Original Well Elev)
Reference Site:	NESE S17-T2N-R65W (Melbon Ranch)	MD Reference:	KBE @ 4913.0ft (Original Well Elev)
Site Error:	0.0ft	North Reference:	True
Reference Well:	Melbon Ranch 4A-17H	Survey Calculation Method:	Minimum Curvature
Well Error:	0.0ft	Output errors are at	2.00 sigma
Reference Wellbore	HZ	Database:	USA EDM 5000 Multi Users DB
Reference Design:	Plan #2	Offset TVD Reference:	Offset Datum

Offset Design NESE S17-T2N-R65W (Melbon Ranch) - Melbon Ranch 33-17 - DD - Plan #1														Offset Site Error:	0.0 ft
Survey Program: 0-MWD														Offset Well Error:	0.0 ft
Reference		Offset		Semi Major Axis		Distance									
Measured Depth (ft)	Vertical Depth (ft)	Measured Depth (ft)	Vertical Depth (ft)	Reference (ft)	Offset (ft)	Highside Toolface (°)	Offset Wellbore Centre +N/-S (ft)	+E/-W (ft)	Between Centres (ft)	Between Ellipses (ft)	Total Uncertainty Axis	Separation Factor	Warning		
0.0	0.0	14.0	14.0	0.0	0.0	134.35	-32.8	33.6	46.9						
100.0	100.0	114.0	114.0	0.2	0.2	134.35	-32.8	33.6	46.9	46.6	0.34	140.004			
200.0	200.0	214.2	214.2	0.3	0.4	134.37	-32.8	33.5	46.9	46.2	0.68	68.457			
300.0	300.0	315.4	315.4	0.5	0.5	136.18	-32.6	31.2	45.1	44.1	1.04	43.327			
400.0	400.0	416.4	416.2	0.7	0.7	141.48	-31.9	25.4	40.9	39.5	1.41	28.921			
500.0	500.0	516.8	516.1	0.9	1.0	152.46	-31.0	16.1	35.0	33.2	1.80	19.458			
600.0	600.0	616.4	615.0	1.0	1.2	173.26	-29.7	3.5	29.9	27.7	2.15	13.895			
643.6	643.6	659.6	657.6	1.1	1.4	-174.03	-29.0	-3.0	29.1	26.9	2.27	12.807	CC, ES		
700.0	700.0	715.1	712.3	1.2	1.6	-156.15	-28.0	-12.4	30.7	28.2	2.43	12.599			
800.0	800.0	812.5	807.8	1.4	1.9	-129.71	-26.0	-31.3	41.2	38.3	2.87	14.369			
900.0	900.0	908.5	901.3	1.5	2.4	-114.06	-23.7	-53.1	59.6	56.1	3.46	17.232			
1,000.0	1,000.0	1,002.9	992.4	1.7	2.8	-105.25	-21.2	-77.6	83.3	79.2	4.10	20.305			
1,100.0	1,100.0	1,095.5	1,081.0	1.9	3.3	-99.96	-18.3	-104.5	111.1	106.4	4.78	23.240			
1,200.0	1,200.0	1,186.3	1,166.9	2.1	3.9	-96.53	-15.3	-133.6	142.5	137.0	5.50	25.935			
1,300.0	1,300.0	1,275.0	1,250.0	2.2	4.5	-94.19	-12.1	-164.7	177.1	170.9	6.24	28.387			
1,400.0	1,400.0	1,361.6	1,330.1	2.4	5.1	-92.50	-8.6	-197.5	214.8	207.7	7.01	30.618			
1,500.0	1,500.0	1,446.1	1,407.1	2.6	5.8	-91.25	-5.0	-231.8	255.2	247.4	7.82	32.660			
1,600.0	1,600.0	1,528.2	1,481.2	2.8	6.5	-90.28	-1.3	-267.2	298.4	289.8	8.63	34.572			
1,700.0	1,700.0	1,614.3	1,557.8	2.9	7.2	-89.49	2.7	-306.2	343.7	334.2	9.50	36.168			
1,800.0	1,800.0	1,703.3	1,637.0	3.1	8.0	-88.85	7.0	-346.5	389.2	378.8	10.40	37.418			
1,900.0	1,900.0	1,792.3	1,716.2	3.3	8.8	-88.34	11.2	-386.9	434.7	423.4	11.30	38.463			
2,000.0	2,000.0	1,881.3	1,795.4	3.5	9.6	-87.93	15.4	-427.3	480.2	468.0	12.20	39.349			
2,100.0	2,100.0	1,970.3	1,874.6	3.6	10.4	-87.60	19.6	-467.6	525.7	512.6	13.11	40.109			
2,200.0	2,200.0	2,059.3	1,953.8	3.8	11.1	-87.31	23.9	-508.0	571.3	557.2	14.01	40.770			
2,300.0	2,300.0	2,148.3	2,033.0	4.0	11.9	-87.07	28.1	-548.4	616.8	601.9	14.92	41.348			
2,400.0	2,400.0	2,237.2	2,112.2	4.2	12.7	-86.86	32.3	-588.7	662.4	646.5	15.82	41.858			
2,500.0	2,500.0	2,326.2	2,191.4	4.3	13.5	-86.68	36.5	-629.1	707.9	691.2	16.73	42.312			
2,600.0	2,600.0	2,415.2	2,270.6	4.5	14.3	-86.52	40.7	-669.5	753.5	735.9	17.64	42.718			
2,700.0	2,700.0	2,504.2	2,349.8	4.7	15.1	-86.37	45.0	-709.8	799.1	780.5	18.55	43.083			
2,800.0	2,800.0	2,593.2	2,429.0	4.9	15.9	-86.25	49.2	-750.2	844.7	825.2	19.46	43.414			
2,900.0	2,900.0	2,682.2	2,508.2	5.0	16.7	-86.13	53.4	-790.6	890.3	869.9	20.37	43.714			
3,000.0	3,000.0	2,771.2	2,587.4	5.2	17.4	-86.03	57.6	-830.9	935.8	914.6	21.27	43.988			
3,100.0	3,100.0	2,860.2	2,666.6	5.4	18.2	-85.94	61.9	-871.3	981.4	959.2	22.18	44.240			
3,200.0	3,200.0	2,949.2	2,745.8	5.6	19.0	-85.85	66.1	-911.7	1,027.0	1,003.9	23.09	44.471			
3,300.0	3,300.0	3,038.2	2,825.0	5.7	19.8	-85.78	70.3	-952.0	1,072.6	1,048.6	24.00	44.684			
3,400.0	3,400.0	3,127.2	2,904.2	5.9	20.6	-85.71	74.5	-992.4	1,118.2	1,093.3	24.91	44.882			
3,500.0	3,500.0	3,216.2	2,983.4	6.1	21.4	-85.64	78.8	-1,032.8	1,163.8	1,138.0	25.82	45.065			
3,600.0	3,600.0	3,305.2	3,062.6	6.3	22.2	-85.58	83.0	-1,073.2	1,209.4	1,182.6	26.74	45.236			
3,700.0	3,700.0	3,394.2	3,141.8	6.4	23.0	-85.52	87.2	-1,113.5	1,255.0	1,227.3	27.65	45.395			
3,800.0	3,800.0	3,483.2	3,221.0	6.6	23.8	-85.47	91.4	-1,153.9	1,300.6	1,272.0	28.56	45.544			
3,900.0	3,900.0	3,572.1	3,300.2	6.8	24.6	-85.42	95.6	-1,194.3	1,346.2	1,316.7	29.47	45.684			
7,800.0	7,033.0	7,417.8	7,047.0	20.7	35.4	90.00	149.4	-1,708.3	1,287.5	1,231.9	55.61	23.154			
7,900.0	7,033.0	7,417.8	7,047.0	22.7	35.4	90.00	149.4	-1,708.3	1,192.8	1,135.2	57.59	20.712			
8,000.0	7,033.0	7,417.8	7,047.0	24.7	35.4	90.00	149.4	-1,708.3	1,099.0	1,039.3	59.66	18.420			
8,100.0	7,033.0	7,417.8	7,047.0	26.9	35.4	90.00	149.4	-1,708.3	1,006.4	944.6	61.81	16.283			
8,200.0	7,033.0	7,417.8	7,047.0	29.0	35.4	90.00	149.4	-1,708.3	915.3	851.3	64.00	14.302			
8,300.0	7,033.0	7,417.8	7,047.0	31.3	35.4	90.00	149.4	-1,708.3	826.4	760.1	66.24	12.476			
8,400.0	7,033.0	7,417.8	7,047.0	33.5	35.4	90.00	149.4	-1,708.3	740.2	671.7	68.51	10.805			
8,500.0	7,033.0	7,417.8	7,047.0	35.8	35.4	90.00	149.4	-1,708.3	658.0	587.2	70.81	9.293			
8,600.0	7,033.0	7,417.8	7,047.0	38.1	35.4	90.00	149.4	-1,708.3	581.3	508.2	73.13	7.950			
8,700.0	7,033.0	7,417.8	7,047.0	40.4	35.4	90.00	149.4	-1,708.3	512.8	437.3	75.46	6.795			
8,800.0	7,033.0	7,417.8	7,047.0	42.8	35.4	90.00	149.4	-1,708.3	456.0	378.2	77.82	5.860			

CC - Min centre to center distance or convergent point, SF - min separation factor, ES - min ellipse separation

Anticollision Report

Company:	EnCana Oil & Gas (USA) Inc	Local Co-ordinate Reference:	Well Melbon Ranch 4A-17H
Project:	DJ Wattenberg	TVD Reference:	KBE @ 4913.0ft (Original Well Elev)
Reference Site:	NESE S17-T2N-R65W (Melbon Ranch)	MD Reference:	KBE @ 4913.0ft (Original Well Elev)
Site Error:	0.0ft	North Reference:	True
Reference Well:	Melbon Ranch 4A-17H	Survey Calculation Method:	Minimum Curvature
Well Error:	0.0ft	Output errors are at	2.00 sigma
Reference Wellbore	HZ	Database:	USA EDM 5000 Multi Users DB
Reference Design:	Plan #2	Offset TVD Reference:	Offset Datum

Offset Design NESE S17-T2N-R65W (Melbon Ranch) - Melbon Ranch 33-17 - DD - Plan #1													Offset Site Error:	0.0 ft
Survey Program: 0-MWD													Offset Well Error:	0.0 ft
Reference		Offset		Semi Major Axis			Distance							Warning
Measured Depth (ft)	Vertical Depth (ft)	Measured Depth (ft)	Vertical Depth (ft)	Reference (ft)	Offset (ft)	Highside Toolface (°)	Offset Wellbore Centre +N/-S (ft)	+E/-W (ft)	Between Centres (ft)	Between Ellipses (ft)	Total Uncertainty Axis	Separation Factor		
8,900.0	7,033.0	7,417.8	7,047.0	45.1	35.4	90.00	149.4	-1,708.3	415.9	335.7	80.18	5.187		
9,000.0	7,033.0	7,417.8	7,047.0	47.5	35.4	90.00	149.4	-1,708.3	397.5	315.0	82.56	4.815		
9,024.9	7,033.0	7,417.8	7,047.0	48.1	35.4	90.00	149.4	-1,708.3	396.7	313.6	83.16	4.771		
9,100.0	7,033.0	7,417.8	7,047.0	49.9	35.4	90.00	149.4	-1,708.3	403.8	318.8	84.95	4.753 SF		
9,200.0	7,033.0	7,417.8	7,047.0	52.3	35.4	90.00	149.4	-1,708.3	433.7	346.3	87.34	4.965		
9,300.0	7,033.0	7,417.8	7,047.0	54.7	35.4	90.00	149.4	-1,708.3	482.8	393.0	89.75	5.379		
9,400.0	7,033.0	7,417.8	7,047.0	57.1	35.4	90.00	149.4	-1,708.3	546.0	453.8	92.16	5.925		
9,500.0	7,033.0	7,417.8	7,047.0	59.5	35.4	90.00	149.4	-1,708.3	619.0	524.4	94.57	6.545		
9,600.0	7,033.0	7,417.8	7,047.0	61.9	35.4	90.00	149.4	-1,708.3	698.7	601.7	96.99	7.204		
9,700.0	7,033.0	7,417.8	7,047.0	64.3	35.4	90.00	149.4	-1,708.3	783.0	683.6	99.41	7.877		
9,800.0	7,033.0	7,417.8	7,047.0	66.7	35.4	90.00	149.4	-1,708.3	870.7	768.9	101.84	8.550		
9,900.0	7,033.0	7,417.8	7,047.0	69.2	35.4	90.00	149.4	-1,708.3	960.8	856.6	104.27	9.215		
10,000.0	7,033.0	7,417.8	7,047.0	71.6	35.4	90.00	149.4	-1,708.3	1,052.7	946.0	106.70	9.866		
10,100.0	7,033.0	7,417.8	7,047.0	74.0	35.4	90.00	149.4	-1,708.3	1,146.0	1,036.8	109.14	10.500		
10,200.0	7,033.0	7,417.8	7,047.0	76.5	35.4	90.00	149.4	-1,708.3	1,240.3	1,128.7	111.58	11.116		
10,300.0	7,033.0	7,417.8	7,047.0	78.9	35.4	90.00	149.4	-1,708.3	1,335.4	1,221.4	114.02	11.712		

Anticollision Report

Company:	EnCana Oil & Gas (USA) Inc	Local Co-ordinate Reference:	Well Melbon Ranch 4A-17H
Project:	DJ Wattenberg	TVD Reference:	KBE @ 4913.0ft (Original Well Elev)
Reference Site:	NESE S17-T2N-R65W (Melbon Ranch)	MD Reference:	KBE @ 4913.0ft (Original Well Elev)
Site Error:	0.0ft	North Reference:	True
Reference Well:	Melbon Ranch 4A-17H	Survey Calculation Method:	Minimum Curvature
Well Error:	0.0ft	Output errors are at	2.00 sigma
Reference Wellbore	HZ	Database:	USA EDM 5000 Multi Users DB
Reference Design:	Plan #2	Offset TVD Reference:	Offset Datum

Offset Design NESE S17-T2N-R65W (Melbon Ranch) - Melbon Ranch 4-6-17 (Existing) - Wellbore #1 - Plan #1													Offset Site Error:	0.0 ft
Survey Program: 0-MWD													Offset Well Error:	0.0 ft
Reference		Offset		Semi Major Axis		Highside Toolface (°)	Distance		Total Uncertainty Axis	Separation Factor	Warning			
Measured Depth (ft)	Vertical Depth (ft)	Measured Depth (ft)	Vertical Depth (ft)	Reference (ft)	Offset (ft)		Offset Wellbore Centre +N/-S (ft)	+E/-W (ft)						
8,300.0	7,033.0	7,219.1	7,070.0	31.3	23.6	-90.00	-633.7	-2,278.7	1,351.7	1,308.2	43.54	31.046		
8,400.0	7,033.0	7,219.1	7,070.0	33.5	23.6	-90.00	-633.7	-2,278.7	1,256.2	1,210.4	45.81	27.422		
8,500.0	7,033.0	7,219.1	7,070.0	35.8	23.6	-90.00	-633.7	-2,278.7	1,161.5	1,113.4	48.11	24.143		
8,600.0	7,033.0	7,219.1	7,070.0	38.1	23.6	-90.00	-633.7	-2,278.7	1,067.7	1,017.3	50.43	21.173		
8,700.0	7,033.0	7,219.1	7,070.0	40.4	23.6	-90.00	-633.7	-2,278.7	975.2	922.4	52.77	18.481		
8,800.0	7,033.0	7,219.1	7,070.0	42.8	23.6	-90.00	-633.7	-2,278.7	884.2	829.1	55.12	16.042		
8,900.0	7,033.0	7,219.1	7,070.0	45.1	23.6	-90.00	-633.7	-2,278.7	795.5	738.0	57.49	13.838		
9,000.0	7,033.0	7,219.1	7,070.0	47.5	23.6	-90.00	-633.7	-2,278.7	709.8	649.9	59.87	11.856		
9,100.0	7,033.0	7,219.1	7,070.0	49.9	23.6	-90.00	-633.7	-2,278.7	628.2	566.0	62.25	10.092		
9,200.0	7,033.0	7,219.1	7,070.0	52.3	23.6	-90.00	-633.7	-2,278.7	552.8	488.2	64.65	8.551		
9,300.0	7,033.0	7,219.1	7,070.0	54.7	23.6	-90.00	-633.7	-2,278.7	486.4	419.3	67.05	7.254		
9,400.0	7,033.0	7,219.1	7,070.0	57.1	23.6	-90.00	-633.7	-2,278.7	433.0	363.5	69.46	6.234		
9,500.0	7,033.0	7,219.1	7,070.0	59.5	23.6	-90.00	-633.7	-2,278.7	398.0	326.1	71.87	5.538		
9,595.3	7,033.0	7,219.1	7,070.0	61.8	23.6	-90.00	-633.7	-2,278.7	386.4	312.2	74.18	5.209 CC		
9,600.0	7,033.0	7,219.1	7,070.0	61.9	23.6	-90.00	-633.7	-2,278.7	386.5	312.2	74.29	5.202 ES, SF		
9,700.0	7,033.0	7,219.1	7,070.0	64.3	23.6	-90.00	-633.7	-2,278.7	400.3	323.6	76.71	5.219		
9,800.0	7,033.0	7,219.1	7,070.0	66.7	23.6	-90.00	-633.7	-2,278.7	437.3	358.1	79.14	5.525		
9,900.0	7,033.0	7,219.1	7,070.0	69.2	23.6	-90.00	-633.7	-2,278.7	492.1	410.5	81.57	6.033		
10,000.0	7,033.0	7,219.1	7,070.0	71.6	23.6	-90.00	-633.7	-2,278.7	559.5	475.5	84.00	6.661		
10,100.0	7,033.0	7,219.1	7,070.0	74.0	23.6	-90.00	-633.7	-2,278.7	635.6	549.2	86.44	7.353		
10,200.0	7,033.0	7,219.1	7,070.0	76.5	23.6	-90.00	-633.7	-2,278.7	717.6	628.7	88.88	8.074		
10,300.0	7,033.0	7,219.1	7,070.0	78.9	23.6	-90.00	-633.7	-2,278.7	803.7	712.3	91.32	8.801		
10,400.0	7,033.0	7,219.1	7,070.0	81.3	23.6	-90.00	-633.7	-2,278.7	892.6	798.9	93.76	9.520		
10,500.0	7,033.0	7,219.1	7,070.0	83.8	23.6	-90.00	-633.7	-2,278.7	983.7	887.5	96.21	10.225		
10,600.0	7,033.0	7,219.1	7,070.0	86.2	23.6	-90.00	-633.7	-2,278.7	1,076.4	977.8	98.65	10.911		
10,700.0	7,033.0	7,219.1	7,070.0	88.7	23.6	-90.00	-633.7	-2,278.7	1,170.3	1,069.2	101.10	11.576		
10,800.0	7,033.0	7,219.1	7,070.0	91.1	23.6	-90.00	-633.7	-2,278.7	1,265.1	1,161.6	103.55	12.217		
10,900.0	7,033.0	7,219.1	7,070.0	93.6	23.6	-90.00	-633.7	-2,278.7	1,360.7	1,254.7	106.00	12.837		

Anticollision Report

Company:	EnCana Oil & Gas (USA) Inc	Local Co-ordinate Reference:	Well Melbon Ranch 4A-17H
Project:	DJ Wattenberg	TVD Reference:	KBE @ 4913.0ft (Original Well Elev)
Reference Site:	NESE S17-T2N-R65W (Melbon Ranch)	MD Reference:	KBE @ 4913.0ft (Original Well Elev)
Site Error:	0.0ft	North Reference:	True
Reference Well:	Melbon Ranch 4A-17H	Survey Calculation Method:	Minimum Curvature
Well Error:	0.0ft	Output errors are at	2.00 sigma
Reference Wellbore	HZ	Database:	USA EDM 5000 Multi Users DB
Reference Design:	Plan #2	Offset TVD Reference:	Offset Datum

Offset Design NESE S17-T2N-R65W (Melbon Ranch) - Melbon Ranch 6-4-17 - DD - Plan #1													Offset Site Error:	0.0 ft
Survey Program: 0-MWD													Offset Well Error:	0.0 ft
Reference		Offset		Semi Major Axis		Distance		Total		Separation		Warning		
Measured Depth (ft)	Vertical Depth (ft)	Measured Depth (ft)	Vertical Depth (ft)	Reference (ft)	Offset (ft)	Highside Toolface (°)	Offset Wellbore Centre +N/-S (ft)	+E/-W (ft)	Between Centres (ft)	Between Ellipses (ft)	Uncertainty Axis			
0.0	0.0	14.0	14.0	0.0	0.0	121.31	-25.5	41.9	49.1					
100.0	100.0	114.0	114.0	0.2	0.2	121.31	-25.5	41.9	49.1	48.8	0.34	146.483		
200.0	200.0	214.2	214.2	0.3	0.4	121.31	-25.5	41.9	49.1	48.4	0.69	71.608		
300.0	300.0	315.9	315.9	0.5	0.5	121.53	-24.4	39.8	46.8	45.7	1.04	44.868		
400.0	400.0	417.3	417.1	0.7	0.7	122.19	-21.8	34.6	41.0	39.6	1.42	28.906		
500.0	500.0	518.1	517.5	0.9	1.0	123.76	-17.5	26.2	31.7	29.9	1.82	17.384		
600.0	600.0	618.2	616.7	1.0	1.3	128.41	-11.7	14.8	19.0	16.8	2.27	8.372		
700.0	700.0	717.2	714.4	1.2	1.6	174.59	-4.4	0.4	4.5	1.8	2.67	1.671		
713.3	713.3	730.3	727.3	1.2	1.6	-153.07	-3.3	-1.7	3.8	1.2	2.54	1.478	Level 3, CC, ES, SF	
800.0	800.0	815.0	810.3	1.4	1.9	-75.65	4.3	-16.7	17.6	14.5	3.17	5.563		
900.0	900.0	911.4	904.1	1.5	2.4	-68.58	14.3	-36.4	40.3	36.6	3.78	10.687		
1,000.0	1,000.0	1,006.2	995.6	1.7	2.8	-66.45	25.5	-58.5	66.5	62.1	4.40	15.116		
1,100.0	1,100.0	1,100.0	1,085.3	1.9	3.4	-65.43	38.0	-83.1	95.8	90.7	5.06	18.933		
1,200.0	1,200.0	1,190.2	1,170.6	2.1	3.9	-64.86	51.2	-109.1	128.1	122.4	5.75	22.278		
1,300.0	1,300.0	1,282.3	1,256.9	2.2	4.5	-64.49	65.7	-137.7	162.9	156.5	6.47	25.174		
1,400.0	1,400.0	1,375.9	1,344.6	2.4	5.1	-64.24	80.6	-167.0	198.0	190.7	7.21	27.461		
1,500.0	1,500.0	1,469.6	1,432.4	2.6	5.7	-64.06	95.5	-196.2	233.0	225.0	7.95	29.311		
1,600.0	1,600.0	1,563.3	1,520.1	2.8	6.3	-63.93	110.3	-225.5	268.0	259.3	8.69	30.836		
1,700.0	1,700.0	1,656.9	1,607.8	2.9	6.9	-63.83	125.2	-254.8	303.1	293.6	9.44	32.115		
1,800.0	1,800.0	1,750.6	1,695.5	3.1	7.5	-63.75	140.0	-284.0	338.1	327.9	10.18	33.201		
1,900.0	1,900.0	1,844.2	1,783.3	3.3	8.2	-63.69	154.9	-313.3	373.1	362.2	10.93	34.136		
2,000.0	2,000.0	1,937.9	1,871.0	3.5	8.8	-63.64	169.8	-342.5	408.2	396.5	11.68	34.948		
2,100.0	2,100.0	2,031.6	1,958.7	3.6	9.4	-63.59	184.6	-371.8	443.2	430.8	12.43	35.660		
2,200.0	2,200.0	2,125.2	2,046.4	3.8	10.0	-63.56	199.5	-401.1	478.3	465.1	13.18	36.289		
2,300.0	2,300.0	2,218.9	2,134.1	4.0	10.6	-63.52	214.3	-430.3	513.3	499.4	13.93	36.849		
2,400.0	2,400.0	2,312.5	2,221.9	4.2	11.2	-63.49	229.2	-459.6	548.3	533.7	14.68	37.351		
2,500.0	2,500.0	2,406.2	2,309.6	4.3	11.9	-63.47	244.1	-488.9	583.4	567.9	15.43	37.803		
2,600.0	2,600.0	2,499.9	2,397.3	4.5	12.5	-63.45	258.9	-518.1	618.4	602.2	16.18	38.213		
2,700.0	2,700.0	2,593.5	2,485.0	4.7	13.1	-63.43	273.8	-547.4	653.5	636.5	16.94	38.585		
2,800.0	2,800.0	2,687.2	2,572.7	4.9	13.7	-63.41	288.6	-576.6	688.5	670.8	17.69	38.925		
2,900.0	2,900.0	2,780.8	2,660.5	5.0	14.3	-63.39	303.5	-605.9	723.5	705.1	18.44	39.237		
3,000.0	3,000.0	2,874.5	2,748.2	5.2	15.0	-63.38	318.4	-635.2	758.6	739.4	19.19	39.525		
3,100.0	3,100.0	2,968.2	2,835.9	5.4	15.6	-63.37	333.2	-664.4	793.6	773.7	19.95	39.790		
3,200.0	3,200.0	3,061.8	2,923.6	5.6	16.2	-63.35	348.1	-693.7	828.7	808.0	20.70	40.036		
3,300.0	3,300.0	3,155.5	3,011.4	5.7	16.8	-63.34	362.9	-722.9	863.7	842.2	21.45	40.264		
3,400.0	3,400.0	3,249.1	3,099.1	5.9	17.4	-63.33	377.8	-752.2	898.7	876.5	22.20	40.476		
3,500.0	3,500.0	3,342.8	3,186.8	6.1	18.1	-63.32	392.7	-781.5	933.8	910.8	22.96	40.675		
3,600.0	3,600.0	3,436.5	3,274.5	6.3	18.7	-63.31	407.5	-810.7	968.8	945.1	23.71	40.861		
3,700.0	3,700.0	3,530.1	3,362.2	6.4	19.3	-63.30	422.4	-840.0	1,003.9	979.4	24.46	41.035		
3,800.0	3,800.0	3,623.8	3,450.0	6.6	19.9	-63.30	437.2	-869.3	1,038.9	1,013.7	25.22	41.198		
3,900.0	3,900.0	3,717.4	3,537.7	6.8	20.6	-63.29	452.1	-898.5	1,073.9	1,048.0	25.97	41.352		
4,000.0	4,000.0	3,811.1	3,625.4	7.0	21.2	-63.28	467.0	-927.8	1,109.0	1,082.3	26.72	41.498		
4,100.0	4,100.0	3,904.8	3,713.1	7.1	21.8	-63.28	481.8	-957.0	1,144.0	1,116.5	27.48	41.635		
4,200.0	4,200.0	3,998.4	3,800.9	7.3	22.4	-63.27	496.7	-986.3	1,179.1	1,150.8	28.23	41.765		
4,300.0	4,300.0	4,092.1	3,888.6	7.5	23.0	-63.26	511.6	-1,015.6	1,214.1	1,185.1	28.98	41.887		
4,400.0	4,400.0	4,185.7	3,976.3	7.7	23.7	-63.26	526.4	-1,044.8	1,249.1	1,219.4	29.74	42.004		
4,500.0	4,500.0	4,338.2	4,120.1	7.8	24.6	-63.25	549.3	-1,089.9	1,282.5	1,251.8	30.76	41.688		
4,600.0	4,600.0	4,513.7	4,288.6	8.0	25.4	-63.25	571.4	-1,133.4	1,310.3	1,278.6	31.76	41.255		
4,700.0	4,700.0	4,694.8	4,465.4	8.2	26.2	-63.24	589.2	-1,168.5	1,332.1	1,299.5	32.60	40.858		
4,800.0	4,800.0	4,879.8	4,648.1	8.4	26.7	-175.15	602.2	-1,194.1	1,350.1	1,333.5	16.60	81.322		
4,900.0	4,899.6	5,067.3	4,834.8	8.5	27.0	-175.16	609.9	-1,209.1	1,366.9	1,350.0	16.97	80.532		
7,500.0	7,033.0	7,279.6	7,047.0	15.7	28.5	90.00	612.0	-1,213.4	1,341.4	1,300.0	41.41	32.397		

CC - Min centre to center distance or convergent point, SF - min separation factor, ES - min ellipse separation

Anticollision Report

Company:	EnCana Oil & Gas (USA) Inc	Local Co-ordinate Reference:	Well Melbon Ranch 4A-17H
Project:	DJ Wattenberg	TVD Reference:	KBE @ 4913.0ft (Original Well Elev)
Reference Site:	NESE S17-T2N-R65W (Melbon Ranch)	MD Reference:	KBE @ 4913.0ft (Original Well Elev)
Site Error:	0.0ft	North Reference:	True
Reference Well:	Melbon Ranch 4A-17H	Survey Calculation Method:	Minimum Curvature
Well Error:	0.0ft	Output errors are at	2.00 sigma
Reference Wellbore	HZ	Database:	USA EDM 5000 Multi Users DB
Reference Design:	Plan #2	Offset TVD Reference:	Offset Datum

Offset Design NESE S17-T2N-R65W (Melbon Ranch) - Melbon Ranch 6-4-17 - DD - Plan #1													Offset Site Error:	0.0 ft
Survey Program: 0-MWD													Offset Well Error:	0.0 ft
Reference		Offset		Semi Major Axis			Distance						Warning	
Measured Depth (ft)	Vertical Depth (ft)	Measured Depth (ft)	Vertical Depth (ft)	Reference (ft)	Offset (ft)	Highside Toolface (°)	Offset Wellbore Centre +N/-S (ft)	+E/-W (ft)	Between Centres (ft)	Between Ellipses (ft)	Total Uncertainty Axis	Separation Factor		
7,600.0	7,033.0	7,279.6	7,047.0	17.2	28.5	90.00	612.0	-1,213.4	1,266.2	1,223.3	42.90	29.515		
7,700.0	7,033.0	7,279.6	7,047.0	18.9	28.5	90.00	612.0	-1,213.4	1,194.7	1,150.1	44.61	26.783		
7,800.0	7,033.0	7,279.6	7,047.0	20.7	28.5	90.00	612.0	-1,213.4	1,127.5	1,081.1	46.47	24.263		
7,900.0	7,033.0	7,279.6	7,047.0	22.7	28.5	90.00	612.0	-1,213.4	1,065.5	1,017.1	48.45	21.990		
8,000.0	7,033.0	7,279.6	7,047.0	24.7	28.5	90.00	612.0	-1,213.4	1,009.6	959.1	50.53	19.982		
8,100.0	7,033.0	7,279.6	7,047.0	26.9	28.5	90.00	612.0	-1,213.4	960.9	908.3	52.67	18.245		
8,200.0	7,033.0	7,279.6	7,047.0	29.0	28.5	90.00	612.0	-1,213.4	920.5	865.7	54.86	16.778		
8,300.0	7,033.0	7,279.6	7,047.0	31.3	28.5	90.00	612.0	-1,213.4	889.6	832.5	57.10	15.579		
8,400.0	7,033.0	7,279.6	7,047.0	33.5	28.5	90.00	612.0	-1,213.4	869.1	809.7	59.37	14.639		
8,500.0	7,033.0	7,279.6	7,047.0	35.8	28.5	90.00	612.0	-1,213.4	859.9	798.2	61.67	13.943		
8,530.0	7,033.0	7,279.6	7,047.0	36.5	28.5	90.00	612.0	-1,213.4	859.3	797.0	62.37	13.779		
8,600.0	7,033.0	7,279.6	7,047.0	38.1	28.5	90.00	612.0	-1,213.4	862.2	798.2	63.99	13.474		
8,700.0	7,033.0	7,279.6	7,047.0	40.4	28.5	90.00	612.0	-1,213.4	876.0	809.7	66.33	13.207		
8,800.0	7,033.0	7,279.6	7,047.0	42.8	28.5	90.00	612.0	-1,213.4	900.8	832.1	68.68	13.115		
8,900.0	7,033.0	7,279.6	7,047.0	45.1	28.5	90.00	612.0	-1,213.4	935.6	864.6	71.05	13.169		
9,000.0	7,033.0	7,279.6	7,047.0	47.5	28.5	90.00	612.0	-1,213.4	979.5	906.0	73.43	13.340		
9,100.0	7,033.0	7,279.6	7,047.0	49.9	28.5	90.00	612.0	-1,213.4	1,031.2	955.4	75.81	13.602		
9,200.0	7,033.0	7,279.6	7,047.0	52.3	28.5	90.00	612.0	-1,213.4	1,089.7	1,011.5	78.21	13.933		
9,300.0	7,033.0	7,279.6	7,047.0	54.7	28.5	90.00	612.0	-1,213.4	1,153.8	1,073.2	80.61	14.314		
9,400.0	7,033.0	7,279.6	7,047.0	57.1	28.5	90.00	612.0	-1,213.4	1,222.9	1,139.8	83.02	14.730		
9,500.0	7,033.0	7,279.6	7,047.0	59.5	28.5	90.00	612.0	-1,213.4	1,295.9	1,210.5	85.43	15.169		

Anticollision Report

Company:	EnCana Oil & Gas (USA) Inc	Local Co-ordinate Reference:	Well Melbon Ranch 4A-17H
Project:	DJ Wattenberg	TVD Reference:	KBE @ 4913.0ft (Original Well Elev)
Reference Site:	NESE S17-T2N-R65W (Melbon Ranch)	MD Reference:	KBE @ 4913.0ft (Original Well Elev)
Site Error:	0.0ft	North Reference:	True
Reference Well:	Melbon Ranch 4A-17H	Survey Calculation Method:	Minimum Curvature
Well Error:	0.0ft	Output errors are at	2.00 sigma
Reference Wellbore	HZ	Database:	USA EDM 5000 Multi Users DB
Reference Design:	Plan #2	Offset TVD Reference:	Offset Datum

Offset Design NESE S17-T2N-R65W (Melbon Ranch) - Melbon Ranch 8-6-17 - DD - Plan #1														Offset Site Error:	0.0 ft
Survey Program: 0-MWD														Offset Well Error:	0.0 ft
Reference		Offset		Semi Major Axis		Distance									
Measured Depth (ft)	Vertical Depth (ft)	Measured Depth (ft)	Vertical Depth (ft)	Reference (ft)	Offset (ft)	Highside Toolface (°)	Offset Wellbore Centre +N/-S (ft)	+E/-W (ft)	Between Centres (ft)	Between Ellipses (ft)	Total Uncertainty Axis	Separation Factor	Warning		
0.0	0.0	14.0	14.0	0.0	0.0	104.61	-14.6	55.9	57.8						
100.0	100.0	114.0	114.0	0.2	0.2	104.61	-14.6	55.9	57.8	57.5	0.34	172.448			
161.2	161.2	175.2	175.2	0.3	0.3	104.61	-14.6	55.9	57.8	57.2	0.55	105.284 CC			
200.0	200.0	213.8	213.8	0.3	0.4	104.64	-14.6	55.9	57.8	57.1	0.68	84.526 ES			
300.0	300.0	312.3	312.3	0.5	0.5	106.11	-16.5	57.0	59.4	58.4	1.03	57.578			
400.0	400.0	410.6	410.4	0.7	0.7	109.55	-21.2	59.8	63.6	62.2	1.38	45.986			
500.0	500.0	508.4	507.8	0.9	1.0	114.17	-28.9	64.3	70.8	69.0	1.75	40.529			
600.0	600.0	605.4	604.1	1.0	1.2	119.14	-39.3	70.4	81.3	79.1	2.13	38.094			
700.0	700.0	703.9	701.5	1.2	1.5	123.62	-51.7	77.8	94.2	91.7	2.55	36.991			
800.0	800.0	802.8	799.3	1.4	1.8	127.04	-64.3	85.1	107.7	104.7	2.98	36.163			
900.0	900.0	901.7	897.2	1.5	2.1	129.70	-76.8	92.5	121.4	118.0	3.42	35.524			
1,000.0	1,000.0	1,000.7	995.0	1.7	2.4	131.81	-89.3	99.9	135.3	131.5	3.86	35.022			
1,100.0	1,100.0	1,099.6	1,092.9	1.9	2.7	133.53	-101.9	107.3	149.4	145.1	4.32	34.620			
1,200.0	1,200.0	1,198.5	1,190.7	2.1	3.0	134.95	-114.4	114.6	163.6	158.9	4.77	34.293			
1,300.0	1,300.0	1,297.4	1,288.5	2.2	3.3	136.14	-127.0	122.0	177.9	172.7	5.23	34.023			
1,400.0	1,400.0	1,396.3	1,386.4	2.4	3.6	137.15	-139.5	129.4	192.3	186.6	5.69	33.797			
1,500.0	1,500.0	1,495.2	1,484.2	2.6	3.9	138.03	-152.0	136.8	206.7	200.5	6.15	33.607			
1,600.0	1,600.0	1,594.1	1,582.0	2.8	4.2	138.79	-164.6	144.1	221.1	214.5	6.61	33.443			
1,700.0	1,700.0	1,693.0	1,679.9	2.9	4.5	139.46	-177.1	151.5	235.6	228.5	7.07	33.302			
1,800.0	1,800.0	1,792.0	1,777.7	3.1	4.8	140.05	-189.7	158.9	250.1	242.5	7.54	33.179			
1,900.0	1,900.0	1,890.9	1,875.5	3.3	5.1	140.57	-202.2	166.3	264.6	256.6	8.00	33.072			
2,000.0	2,000.0	1,989.8	1,973.4	3.5	5.4	141.04	-214.7	173.6	279.1	270.7	8.46	32.976			
2,100.0	2,100.0	2,088.7	2,071.2	3.6	5.7	141.47	-227.3	181.0	293.7	284.8	8.93	32.891			
2,200.0	2,200.0	2,187.6	2,169.1	3.8	6.0	141.85	-239.8	188.4	308.3	298.9	9.39	32.815			
2,300.0	2,300.0	2,286.5	2,266.9	4.0	6.3	142.20	-252.4	195.8	322.9	313.0	9.86	32.747			
2,400.0	2,400.0	2,385.4	2,364.7	4.2	6.7	142.52	-264.9	203.1	337.5	327.1	10.32	32.685			
2,500.0	2,500.0	2,484.3	2,462.6	4.3	7.0	142.81	-277.5	210.5	352.1	341.3	10.79	32.629			
2,600.0	2,600.0	2,583.3	2,560.4	4.5	7.3	143.08	-290.0	217.9	366.7	355.4	11.26	32.577			
2,700.0	2,700.0	2,682.2	2,658.2	4.7	7.6	143.33	-302.5	225.3	381.3	369.6	11.72	32.530			
2,800.0	2,800.0	2,781.1	2,756.1	4.9	7.9	143.56	-315.1	232.6	395.9	383.7	12.19	32.487			
2,900.0	2,900.0	2,880.0	2,853.9	5.0	8.2	143.77	-327.6	240.0	410.6	397.9	12.65	32.447			
3,000.0	3,000.0	2,978.9	2,951.7	5.2	8.5	143.97	-340.2	247.4	425.2	412.1	13.12	32.411			
3,100.0	3,100.0	3,077.8	3,049.6	5.4	8.8	144.16	-352.7	254.8	439.8	426.3	13.59	32.377			
3,200.0	3,200.0	3,176.7	3,147.4	5.6	9.1	144.33	-365.2	262.2	454.5	440.4	14.05	32.345			
3,300.0	3,300.0	3,275.6	3,245.3	5.7	9.4	144.49	-377.8	269.5	469.1	454.6	14.52	32.315			
3,400.0	3,400.0	3,374.6	3,343.1	5.9	9.7	144.65	-390.3	276.9	483.8	468.8	14.98	32.288			
3,500.0	3,500.0	3,473.5	3,440.9	6.1	10.0	144.79	-402.9	284.3	498.4	483.0	15.45	32.262			
3,600.0	3,600.0	3,572.4	3,538.8	6.3	10.3	144.93	-415.4	291.7	513.1	497.2	15.92	32.238			
3,700.0	3,700.0	3,671.3	3,636.6	6.4	10.6	145.06	-427.9	299.0	527.8	511.4	16.38	32.215			
3,800.0	3,800.0	3,770.2	3,734.4	6.6	11.0	145.18	-440.5	306.4	542.4	525.6	16.85	32.194			
3,900.0	3,900.0	3,869.1	3,832.3	6.8	11.3	145.29	-453.0	313.8	557.1	539.8	17.32	32.173			
4,000.0	4,000.0	3,968.0	3,930.1	7.0	11.6	145.40	-465.6	321.2	571.8	554.0	17.78	32.154			
4,100.0	4,100.0	4,066.9	4,027.9	7.1	11.9	145.50	-478.1	328.5	586.5	568.2	18.25	32.136			
4,200.0	4,200.0	4,165.9	4,125.8	7.3	12.2	145.60	-490.7	335.9	601.1	582.4	18.72	32.119			
4,300.0	4,300.0	4,264.8	4,223.6	7.5	12.5	145.70	-503.2	343.3	615.8	596.6	19.18	32.103			
4,400.0	4,400.0	4,363.7	4,321.5	7.7	12.8	145.79	-515.7	350.7	630.5	610.8	19.65	32.088			
4,500.0	4,500.0	4,462.6	4,419.3	7.8	13.1	145.87	-528.3	358.0	645.2	625.0	20.12	32.073			
4,600.0	4,600.0	4,561.5	4,517.1	8.0	13.4	145.95	-540.8	365.4	659.8	639.3	20.58	32.059			
4,700.0	4,700.0	4,671.7	4,626.2	8.2	13.7	146.04	-554.4	373.4	674.2	653.1	21.07	32.004			
4,800.0	4,800.0	4,802.1	4,755.9	8.4	14.0	34.18	-566.6	380.6	682.8	666.1	16.74	40.796			
4,900.0	4,899.6	4,933.2	4,886.7	8.5	14.3	34.71	-573.6	384.7	682.6	665.5	17.13	39.837			
5,000.0	4,998.8	5,059.4	5,012.8	8.7	14.4	35.68	-575.6	385.8	673.6	656.1	17.50	38.485			

CC - Min centre to center distance or convergent point, SF - min separation factor, ES - min ellipse separation

Anticollision Report

Company:	EnCana Oil & Gas (USA) Inc	Local Co-ordinate Reference:	Well Melbon Ranch 4A-17H
Project:	DJ Wattenberg	TVD Reference:	KBE @ 4913.0ft (Original Well Elev)
Reference Site:	NESE S17-T2N-R65W (Melbon Ranch)	MD Reference:	KBE @ 4913.0ft (Original Well Elev)
Site Error:	0.0ft	North Reference:	True
Reference Well:	Melbon Ranch 4A-17H	Survey Calculation Method:	Minimum Curvature
Well Error:	0.0ft	Output errors are at	2.00 sigma
Reference Wellbore	HZ	Database:	USA EDM 5000 Multi Users DB
Reference Design:	Plan #2	Offset TVD Reference:	Offset Datum

Offset Design NESE S17-T2N-R65W (Melbon Ranch) - Melbon Ranch 8-6-17 - DD - Plan #1													Offset Site Error:	0.0 ft
Survey Program: 0-MWD													Offset Well Error:	0.0 ft
Reference		Offset		Semi Major Axis		Highside Toolface (°)	Distance		Total Uncertainty Axis	Separation Factor	Warning			
Measured Depth (ft)	Vertical Depth (ft)	Measured Depth (ft)	Vertical Depth (ft)	Reference (ft)	Offset (ft)		Offset Wellbore Centre +N/-S (ft)	+E/-W (ft)						
5,100.0	5,097.1	5,157.7	5,111.1	8.9	14.5	36.86	-575.6	385.8	658.8	641.0	17.82	36.976		
5,200.0	5,194.3	5,254.9	5,208.3	9.2	14.6	38.46	-575.6	385.8	640.2	622.0	18.14	35.289		
5,300.0	5,290.2	5,350.8	5,304.2	9.4	14.7	40.51	-575.6	385.8	617.9	599.4	18.50	33.404		
5,400.0	5,385.3	5,445.8	5,399.3	9.7	14.8	42.42	-575.6	385.8	594.1	575.2	18.95	31.345		
5,500.0	5,480.3	5,540.9	5,494.3	10.1	14.9	44.47	-575.6	385.8	571.1	551.6	19.45	29.355		
5,600.0	5,575.4	5,636.0	5,589.4	10.4	15.0	46.68	-575.6	385.8	548.8	528.8	20.00	27.442		
5,700.0	5,670.5	5,731.1	5,684.5	10.8	15.2	49.06	-575.6	385.8	527.5	506.9	20.60	25.609		
5,800.0	5,765.5	5,826.1	5,779.5	11.2	15.3	51.63	-575.6	385.8	507.1	485.8	21.25	23.864		
5,900.0	5,860.6	5,921.2	5,874.6	11.6	15.4	54.39	-575.6	385.8	487.8	465.9	21.96	22.213		
6,000.0	5,955.7	6,016.3	5,969.7	12.0	15.5	57.36	-575.6	385.8	469.8	447.1	22.74	20.665		
6,100.0	6,050.8	6,111.4	6,064.8	12.4	15.6	60.54	-575.6	385.8	453.2	429.7	23.57	19.227		
6,200.0	6,145.8	6,206.4	6,159.8	12.9	15.7	63.93	-575.6	385.8	438.2	413.7	24.47	17.908		
6,300.0	6,240.9	6,301.5	6,254.9	13.3	15.8	67.53	-575.6	385.8	424.9	399.5	25.42	16.716		
6,400.0	6,336.0	6,396.6	6,350.0	13.8	15.9	71.33	-575.6	385.8	413.5	387.1	26.41	15.656		
6,500.0	6,432.1	6,492.7	6,446.1	14.2	16.1	60.09	-575.6	385.8	403.6	376.4	27.23	14.822		
6,600.0	6,531.0	6,591.6	6,545.0	14.4	16.2	-6.50	-575.6	385.8	392.4	364.9	27.52	14.261		
6,700.0	6,629.3	6,689.9	6,643.3	14.4	16.3	-57.12	-575.6	385.8	379.1	351.9	27.28	13.896		
6,800.0	6,723.5	6,784.1	6,737.5	14.3	16.4	-75.22	-575.6	385.8	366.0	339.3	26.67	13.723 SF		
6,900.0	6,810.1	6,870.7	6,824.1	14.0	16.5	-87.64	-575.6	385.8	358.1	332.2	25.90	13.825		
6,921.7	6,827.5	6,888.1	6,841.5	14.0	16.6	-90.00	-575.6	385.8	357.8	332.0	25.74	13.898		
7,000.0	6,885.8	6,946.4	6,899.8	13.7	16.6	-97.42	-575.6	385.8	362.7	337.5	25.20	14.393		
7,100.0	6,947.9	7,008.5	6,961.9	13.5	16.7	-103.80	-575.6	385.8	386.4	361.6	24.78	15.594		
7,200.0	6,994.2	7,054.8	7,008.2	13.4	16.8	-105.67	-575.6	385.8	431.4	406.5	24.97	17.278		
7,300.0	7,022.9	7,083.5	7,036.9	13.6	16.8	-101.78	-575.6	385.8	495.4	469.3	26.09	18.989		
7,400.0	7,033.0	7,093.6	7,047.0	14.5	16.8	-90.47	-575.6	385.8	572.7	544.9	27.74	20.644		
7,500.0	7,033.0	7,093.6	7,047.0	15.7	16.8	-90.00	-575.6	385.8	657.1	628.1	28.96	22.687		
7,600.0	7,033.0	7,093.6	7,047.0	17.2	16.8	-90.00	-575.6	385.8	745.4	714.9	30.46	24.472		
7,700.0	7,033.0	7,093.6	7,047.0	18.9	16.8	-90.00	-575.6	385.8	836.3	804.2	32.17	26.002		
7,800.0	7,033.0	7,093.6	7,047.0	20.7	16.8	-90.00	-575.6	385.8	929.2	895.1	34.03	27.304		
7,900.0	7,033.0	7,093.6	7,047.0	22.7	16.8	-90.00	-575.6	385.8	1,023.3	987.3	36.01	28.416		
8,000.0	7,033.0	7,093.6	7,047.0	24.7	16.8	-90.00	-575.6	385.8	1,118.5	1,080.4	38.09	29.368		
8,100.0	7,033.0	7,093.6	7,047.0	26.9	16.8	-90.00	-575.6	385.8	1,214.4	1,174.2	40.23	30.190		
8,200.0	7,033.0	7,093.6	7,047.0	29.0	16.8	-90.00	-575.6	385.8	1,311.0	1,268.6	42.42	30.904		

Anticollision Report

Company:	EnCana Oil & Gas (USA) Inc	Local Co-ordinate Reference:	Well Melbon Ranch 4A-17H
Project:	DJ Wattenberg	TVD Reference:	KBE @ 4913.0ft (Original Well Elev)
Reference Site:	NESE S17-T2N-R65W (Melbon Ranch)	MD Reference:	KBE @ 4913.0ft (Original Well Elev)
Site Error:	0.0ft	North Reference:	True
Reference Well:	Melbon Ranch 4A-17H	Survey Calculation Method:	Minimum Curvature
Well Error:	0.0ft	Output errors are at	2.00 sigma
Reference Wellbore	HZ	Database:	USA EDM 5000 Multi Users DB
Reference Design:	Plan #2	Offset TVD Reference:	Offset Datum

Offset Design NESE S17-T2N-R65W (Melbon Ranch) - Melbon Ranch 8-8-17 - DD - Plan #1													Offset Site Error:	0.0 ft
Survey Program: 0-MWD													Offset Well Error:	0.0 ft
Reference		Offset		Semi Major Axis			Distance				Total Uncertainty Axis	Separation Factor	Warning	
Measured Depth (ft)	Vertical Depth (ft)	Measured Depth (ft)	Vertical Depth (ft)	Reference (ft)	Offset (ft)	Highside Toolface (°)	Offset Wellbore Centre +N/-S (ft)	+E/-W (ft)	Between Centres (ft)	Between Ellipses (ft)				
0.0	0.0	14.0	14.0	0.0	0.0	114.70	-21.9	47.5	52.3					
100.0	100.0	114.0	114.0	0.2	0.2	114.70	-21.9	47.5	52.3	52.0	0.34	156.127		
161.2	161.2	175.2	175.2	0.3	0.3	114.70	-21.9	47.5	52.3	51.8	0.55	95.319 CC		
200.0	200.0	213.9	213.9	0.3	0.4	114.73	-21.9	47.5	52.3	51.7	0.68	76.525 ES		
300.0	300.0	312.8	312.7	0.5	0.5	116.65	-24.1	47.9	53.6	52.6	1.03	51.991		
400.0	400.0	411.4	411.2	0.7	0.7	121.15	-29.5	48.9	57.2	55.8	1.38	41.408		
500.0	500.0	509.6	509.0	0.9	1.0	127.23	-38.3	50.4	63.5	61.8	1.74	36.531		
600.0	600.0	607.0	605.6	1.0	1.2	133.74	-50.3	52.5	73.2	71.1	2.12	34.539		
700.0	700.0	703.5	700.9	1.2	1.5	139.80	-65.3	55.2	86.5	84.0	2.54	34.101 SF		
800.0	800.0	800.0	795.6	1.4	1.9	145.03	-83.5	58.4	103.6	100.6	3.01	34.455		
900.0	900.0	892.8	886.1	1.5	2.3	149.18	-104.0	62.0	124.2	120.7	3.52	35.323		
1,000.0	1,000.0	985.3	975.5	1.7	2.7	152.54	-127.2	66.1	148.4	144.4	4.08	36.382		
1,100.0	1,100.0	1,076.2	1,062.6	1.9	3.2	155.19	-152.8	70.6	176.0	171.3	4.69	37.560		
1,200.0	1,200.0	1,165.3	1,147.1	2.1	3.7	157.30	-180.5	75.5	206.8	201.5	5.33	38.797		
1,300.0	1,300.0	1,252.5	1,229.0	2.2	4.3	158.98	-210.1	80.8	240.6	234.6	6.01	40.061		
1,400.0	1,400.0	1,337.7	1,308.0	2.4	4.8	160.34	-241.4	86.3	277.4	270.7	6.71	41.333		
1,500.0	1,500.0	1,420.8	1,384.2	2.6	5.4	161.44	-274.2	92.1	317.0	309.6	7.44	42.607		
1,600.0	1,600.0	1,500.0	1,455.8	2.8	6.0	162.33	-307.4	97.9	359.3	351.1	8.17	43.952		
1,700.0	1,700.0	1,580.6	1,527.8	2.9	6.7	163.11	-343.2	104.2	404.1	395.2	8.96	45.106		
1,800.0	1,800.0	1,657.2	1,595.2	3.1	7.4	163.74	-379.0	110.6	451.4	441.7	9.74	46.330		
1,900.0	1,900.0	1,731.6	1,659.7	3.3	8.0	164.27	-415.5	117.0	501.0	490.5	10.53	47.588		
2,000.0	2,000.0	1,813.8	1,730.1	3.5	8.8	164.78	-457.2	124.3	552.3	541.0	11.39	48.483		
2,100.0	2,100.0	1,899.4	1,803.5	3.6	9.5	165.23	-500.7	132.0	603.8	591.5	12.29	49.134		
2,200.0	2,200.0	1,985.1	1,876.9	3.8	10.3	165.60	-544.2	139.7	655.2	642.0	13.19	49.690		
2,300.0	2,300.0	2,070.8	1,950.4	4.0	11.1	165.92	-587.7	147.4	706.6	692.6	14.08	50.171		
2,400.0	2,400.0	2,156.5	2,023.8	4.2	11.9	166.20	-631.2	155.1	758.1	743.1	14.98	50.591		
2,500.0	2,500.0	2,242.2	2,097.2	4.3	12.7	166.44	-674.7	162.7	809.6	793.7	15.89	50.962		
2,600.0	2,600.0	2,327.9	2,170.6	4.5	13.4	166.65	-718.2	170.4	861.1	844.3	16.79	51.291		
2,700.0	2,700.0	2,413.6	2,244.0	4.7	14.2	166.84	-761.7	178.1	912.6	894.9	17.69	51.585		
2,800.0	2,800.0	2,499.2	2,317.5	4.9	15.0	167.01	-805.2	185.8	964.1	945.5	18.59	51.849		
2,900.0	2,900.0	2,584.9	2,390.9	5.0	15.8	167.16	-848.7	193.4	1,015.6	996.1	19.50	52.088		
3,000.0	3,000.0	2,670.6	2,464.3	5.2	16.6	167.30	-892.2	201.1	1,067.1	1,046.7	20.40	52.305		
3,100.0	3,100.0	2,756.3	2,537.7	5.4	17.4	167.42	-935.7	208.8	1,118.6	1,097.3	21.31	52.503		
3,200.0	3,200.0	2,842.0	2,611.1	5.6	18.1	167.53	-979.2	216.5	1,170.1	1,147.9	22.21	52.684		
3,300.0	3,300.0	2,927.7	2,684.6	5.7	18.9	167.64	-1,022.7	224.1	1,221.6	1,198.5	23.12	52.850		
3,400.0	3,400.0	3,013.4	2,758.0	5.9	19.7	167.73	-1,066.2	231.8	1,273.2	1,249.1	24.02	53.004		
3,500.0	3,500.0	3,099.0	2,831.4	6.1	20.5	167.82	-1,109.7	239.5	1,324.7	1,299.8	24.93	53.146		

Anticollision Report

Company:	EnCana Oil & Gas (USA) Inc	Local Co-ordinate Reference:	Well Melbon Ranch 4A-17H
Project:	DJ Wattenberg	TVD Reference:	KBE @ 4913.0ft (Original Well Elev)
Reference Site:	NESE S17-T2N-R65W (Melbon Ranch)	MD Reference:	KBE @ 4913.0ft (Original Well Elev)
Site Error:	0.0ft	North Reference:	True
Reference Well:	Melbon Ranch 4A-17H	Survey Calculation Method:	Minimum Curvature
Well Error:	0.0ft	Output errors are at	2.00 sigma
Reference Wellbore	HZ	Database:	USA EDM 5000 Multi Users DB
Reference Design:	Plan #2	Offset TVD Reference:	Offset Datum

Reference Depths are relative to KBE @ 4913.0ft (Original Well Elev)

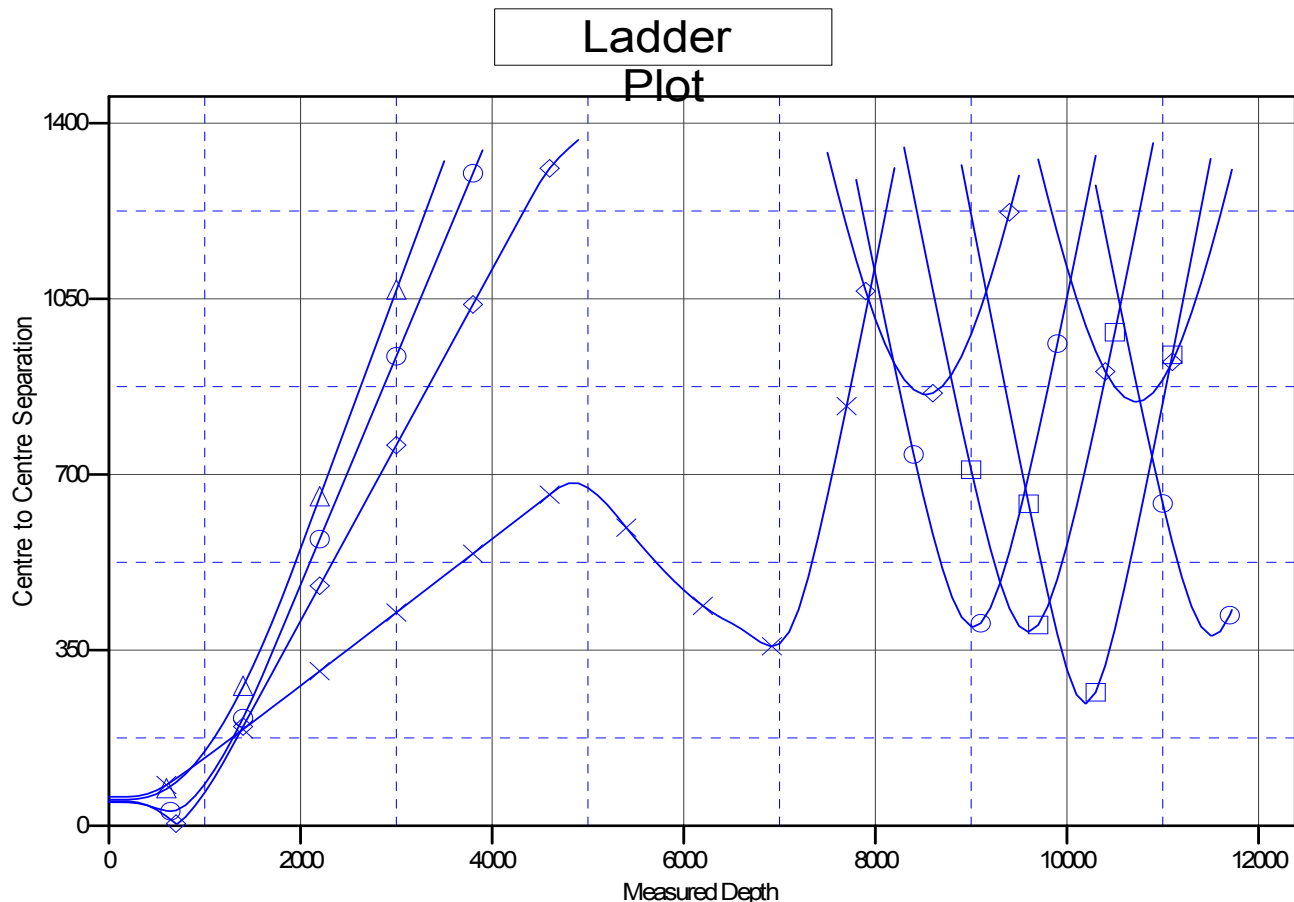
Offset Depths are relative to Offset Datum

Central Meridian is -105.500000 °

Coordinates are relative to: Melbon Ranch 4A-17H

Coordinate System is US State Plane 1983, Colorado Northern Zone

Grid Convergence at Surface is: 0.53°



LEGEND

1 Ranch 13-17 (Existing), Wellbore #1, Plan #1 V0	● Melbon Ranch 33-17, DD, Plan #1 V0	✕ Melbon Ranch 8-6-17, DD, Plan #1 V0
1 Ranch 23-17 (Existing), Wellbore #1, Plan #1 V0	■ Melbon Ranch 4-6-17 (Existing), Wellbore #1, Plan #1 V0	▲ Melbon Ranch 8-8-17, DD, Plan #1 V0
1 Ranch 2-4-17 (Existing), Wellbore #1, Plan #1 V0	◆ Melbon Ranch 6-4-17, DD, Plan #1 V0	