

DISTURBED AREA = 3.8 ACRES

CUT SLOPES: 2:1

FILL SLOPES: 3:1

PAD QUANTITIES:

TOTAL CUT = 19639 CUBIC YARDS

TOTAL FILL = 22732 CUBIC YARDS

NET = 3893 CUBIC YARDS FILL

SPOIL DOES NOT INCLUDE TOP SOIL

RD 1 QUANTITIES:

TOTAL CUT: 8350

TOTAL FILL: 6450

NET = 1900 CUBIC YARDS CUT

RD 2 QUANTITIES:

TOTAL CUT: 2400 CUBIC YARDS

TOTAL FILL: 75 CUBIC YARDS

NET = 2325 CUBIC YARDS CUT

#### CUTTINGS PIT

Capacity with 2'

freeboard = 2040 Bbls

Total Volume = 690 CY

TOP SOIL QUANTITY FOR PAD

BASED ON 6 INCH DEPTH:

3080 CUBIC YARDS

#### Notes:

1. Contact utility line locators before digging. CALL 811

2. Earth work quantities are estimated and should be used at contractors own discretion.

3. Earth work is based on the removal of 6 inches of topsoil for Elk Ranch Pad and RD 2.

TYP PAD CORNER  
R = 25.0'  
L = 39.27'

C 15.3  
7278.25

N 16° 51' 51.35" E  
200.0'

N 16° 51' 51.35" E  
200.000'

F 8.5  
7275.75

N 73° 06' 08.65" W  
350.000'

N 73° 06' 08.65" W  
350.000'

N 73° 06' 08.65" W  
350.000'

N 73° 06' 08.65" W  
350.000'

N 73° 06' 08.65" W  
350.000'

N 73° 06' 08.65" W  
350.000'

N 73° 06' 08.65" W  
350.000'

N 73° 06' 08.65" W  
350.000'

N 73° 06' 08.65" W  
350.000'

N 73° 06' 08.65" W  
350.000'

N 73° 06' 08.65" W  
350.000'

N 73° 06' 08.65" W  
350.000'

N 73° 06' 08.65" W  
350.000'

N 73° 06' 08.65" W  
350.000'

N 73° 06' 08.65" W  
350.000'

N 73° 06' 08.65" W  
350.000'

N 73° 06' 08.65" W  
350.000'

C 15.3  
7278.25

N 16° 51' 51.35" E  
200.0'

N 16° 51' 51.35" E  
200.000'

F 8.5  
7275.75

N 73° 06' 08.65" W  
350.000'

N 73° 06' 08.65" W  
350.000'

N 73° 06' 08.65" W  
350.000'

N 73° 06' 08.65" W  
350.000'

N 73° 06' 08.65" W  
350.000'

N 73° 06' 08.65" W  
350.000'

N 73° 06' 08.65" W  
350.000'

N 73° 06' 08.65" W  
350.000'

N 73° 06' 08.65" W  
350.000'

N 73° 06' 08.65" W  
350.000'

N 73° 06' 08.65" W  
350.000'

N 73° 06' 08.65" W  
350.000'

N 73° 06' 08.65" W  
350.000'

N 73° 06' 08.65" W  
350.000'

N 73° 06' 08.65" W  
350.000'

N 73° 06' 08.65" W  
350.000'

N 73° 06' 08.65" W  
350.000'

C 15.3  
7278.25

N 16° 51' 51.35" E  
200.0'

N 16° 51' 51.35" E  
200.000'

F 8.5  
7275.75

N 73° 06' 08.65" W  
350.000'

N 73° 06' 08.65" W  
350.000'

N 73° 06' 08.65" W  
350.000'

N 73° 06' 08.65" W  
350.000'

N 73° 06' 08.65" W  
350.000'

N 73° 06' 08.65" W  
350.000'

N 73° 06' 08.65" W  
350.000'

N 73° 06' 08.65" W  
350.000'

N 73° 06' 08.65" W  
350.000'

N 73° 06' 08.65" W  
350.000'

N 73° 06' 08.65" W  
350.000'

N 73° 06' 08.65" W  
350.000'

N 73° 06' 08.65" W  
350.000'

N 73° 06' 08.65" W  
350.000'

N 73° 06' 08.65" W  
350.000'

N 73° 06' 08.65" W  
350.000'

N 73° 06' 08.65" W  
350.000'

C 15.3  
7278.25

N 16° 51' 51.35" E  
200.0'

N 16° 51' 51.35" E  
200.000'

F 8.5  
7275.75

N 73° 06' 08.65" W  
350.000'

N 73° 06' 08.65" W  
350.000'

N 73° 06' 08.65" W  
350.000'

N 73° 06' 08.65" W  
350.000'

N 73° 06' 08.65" W  
350.000'

N 73° 06' 08.65" W  
350.000'

N 73° 06' 08.65" W  
350.000'

N 73° 06' 08.65" W  
350.000'

N 73° 06' 08.65" W  
350.000'

N 73° 06' 08.65" W  
350.000'

N 73° 06' 08.65" W  
350.000'

N 73° 06' 08.65" W  
350.000'

N 73° 06' 08.65" W  
350.000'

N 73° 06' 08.65" W  
350.000'

N 73° 06' 08.65" W  
350.000'

N 73° 06' 08.65" W  
350.000'

N 73° 06' 08.65" W  
350.000'

C 15.3  
7278.25

N 16° 51' 51.35" E  
200.0'

N 16° 51' 51.35" E  
200.000'

F 8.5  
7275.75

N 73° 06' 08.65" W  
350.000'

N 73° 06' 08.65" W  
350.000'

N 73° 06' 08.65" W  
350.000'

N 73° 06' 08.65" W  
350.000'

N 73° 06' 08.65" W  
350.000'

N 73° 06' 08.65" W  
350.000'

N 73° 06' 08.65" W  
350.000'

N 73° 06' 08.65" W  
350.000'

N 73° 06' 08.65" W  
350.000'

N 73° 06' 08.65" W  
350.000'

N 73° 06' 08.65" W  
350.000'

N 73° 06' 08.65" W  
350.000'

N 73° 06' 08.65" W  
350.000'

N 73° 06' 08.65" W  
350.000'

N 73° 06' 08.65" W  
350.000'

N 73° 06' 08.65" W  
350.000'

N 73° 06' 08.65" W  
350.000'

C 15.3  
7278.25

N 16° 51' 51.35" E  
200.0'

N 16° 51' 51.35" E  
200.000'

F 8.5  
7275.75

N 73° 06' 08.65" W  
350.000'

N 73° 06' 08.65" W  
350.000'

N 73° 06' 08.65" W  
350.000'

N 73° 06' 08.65" W  
350.000'

N 73° 06' 08.65" W  
350.000'

N 73° 06' 08.65" W  
350.000'

N 73° 06' 08.65" W  
350.000'

N 73° 06' 08.65" W  
350.000'

N 73° 06' 08.65" W  
350.000'

N 73° 06' 08.65" W  
350.000'

N 73° 06' 08.65" W  
350.000'

N 73° 06' 08.65" W  
350.000'

N 73° 06' 08.65" W  
350.000'

N 73° 06' 08.65" W  
350.000'

N 73° 06' 08.65" W  
350.000'

N 73° 06' 08.65" W  
350.000'

N 73° 06' 08.65" W  
350.000'

C 15.3  
7278.25

N 16° 51' 51.35" E  
200.0'

N 16° 51' 51.35" E  
200.000'

F 8.5  
7275.75

N 73° 06' 08.65" W  
350.000'

N 73° 06' 08.65" W  
350.000'

N 73° 06' 08.65" W  
350.000'

N 73° 06' 08.65" W  
350.000'

N 73° 06' 08.65" W  
350.000'

N 73° 06' 08.65" W  
350.000'

N 73° 06' 08.65" W  
350.000'

N 73° 06' 08.65" W  
350.000'

N 73° 06' 08.65" W  
350.000'

N 73° 06' 08.65" W  
350.000'

N 73° 06' 08.65" W  
350.000'

N 73° 06' 08.65" W  
350.000'

N 73° 06' 08.65" W  
350.000'

N 73° 06' 08.65" W  
350.000'

N 73° 06' 08.65" W  
350.000'

N 73° 06' 08.65" W  
350.000'

N 73° 06' 08.65" W  
350.000'

C 15.3  
7278.25

N 16° 51' 51.35" E  
200.0'

N 16° 51' 51.35" E  
200.000'

F 8.5  
7275.75

N 73° 06' 08.65" W  
350.000'

N 73° 06' 08.65" W  
350.000'

N 73° 06' 08.65" W  
350.000'

N 73° 06' 08.65" W  
350.000'

N 73° 06' 08.65" W  
350.000'

N 73° 06' 08.65" W  
350.000'

N 73° 06' 08.65" W  
350.000'

N 73° 06' 08.65" W  
350.000'

N 73° 06' 08.65" W  
350.000'

N 73° 06' 08.65" W  
350.000'

N 73° 06' 08.65" W  
350.000'

N 73° 06' 08.65" W  
350.000'

N 73° 06' 08.65" W  
350.000'

N 73° 06' 08.65" W  
350.000'

N 73° 06' 08.65" W  
350.000'

N 73° 06' 08.65" W  
350.000'

N 73° 06' 08.65" W  
350.000'

C 15.3  
7278.25

N 16° 51' 51.35" E  
200.0'

N 16° 51' 51.35" E  
200.000'

F 8.5  
7275.75

N 73° 06' 08.65" W  
350.000'

N 73° 06' 08.65" W  
350.000'

N 73° 06' 08.65" W  
350.000'

N 73° 06' 08.65" W  
350.000'

N 73° 06' 08.65" W  
350.000'

N 73° 06' 08.65" W  
350.000'

N 73° 06' 08.65" W  
350.000'

N 73° 06' 08.65" W  
350.000'

N 73° 06' 08.65" W  
350.000'

N 73° 06' 08.65" W  
350.000'

N 73° 06' 08.65" W  
350.000'

N 73° 06' 08.65" W  
350.000'

N 73° 06' 08.65" W  
350.000'

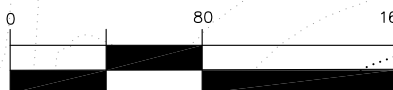
N 73° 06' 08.65" W  
350.000'

N 73° 06' 08.65" W  
350.000'

N 73° 06' 08.65" W  
350.000'

N 73° 06' 08.65" W  
350.000'

GRAPHIC SCALE



( IN FEET )

1 inch = 80 ft.

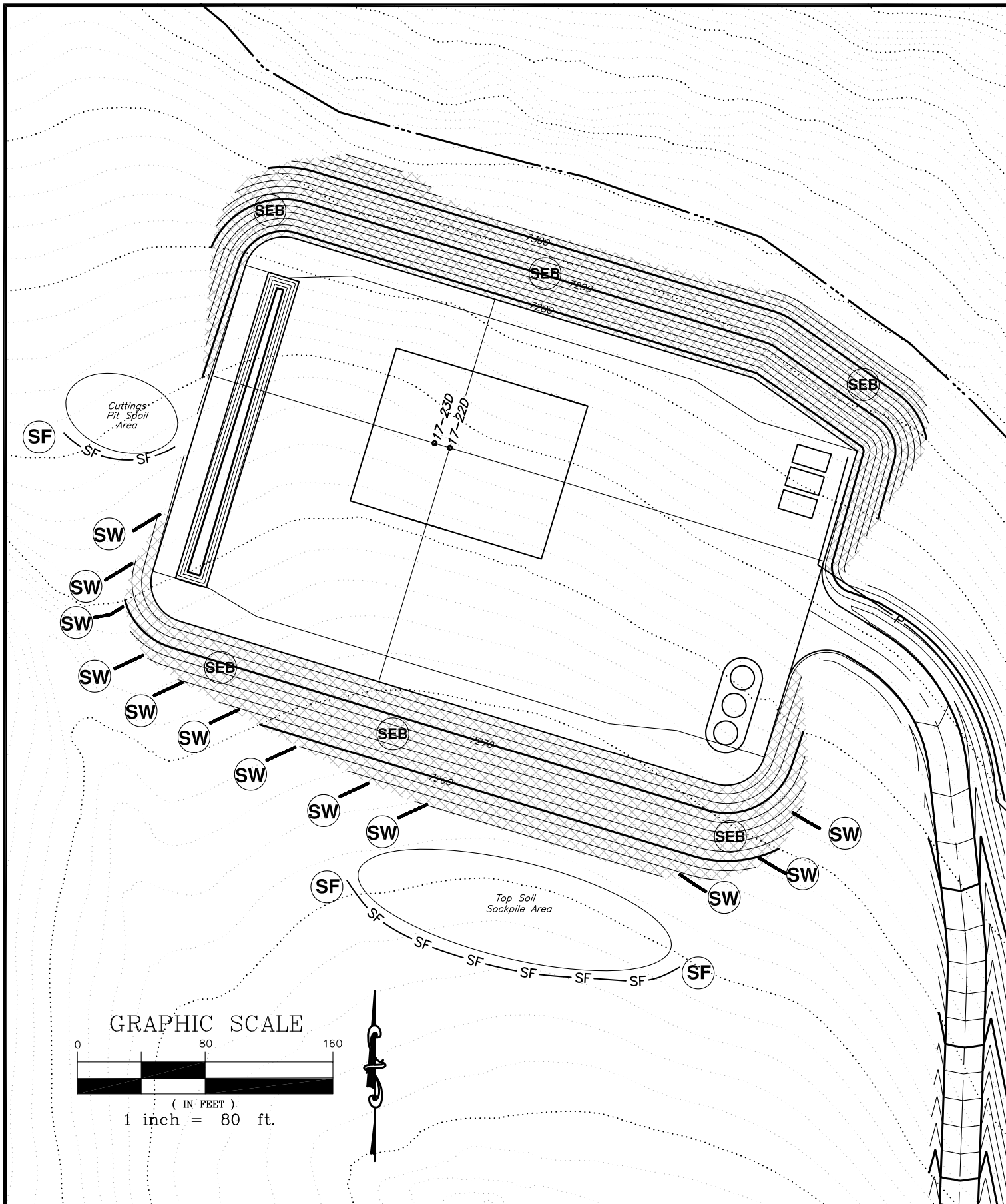
Top Soil  
Sockpile Area



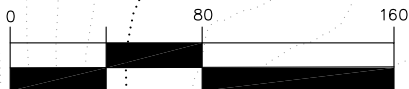
SGM INC.

118 W. 6th Street, Suite 200  
Glenwood Springs, Colorado 81601  
(970) 945-1004 (FAX 945-5948)  
Aspen, Colorado (970) 925-6727

Scale:



GRAPHIC SCALE



( IN FEET )  
1 inch = 80 ft.



SGM INC.

118 W. 6th Street, Suite 200  
Glenwood Springs, Colorado 81601  
(970) 945-1004 (FAX 945-5948)  
Aspen, Colorado (970) 925-6727

Scale: 1" = 80'

Sheet 2K of 8

Elk Ranch Pad

Elk Ranch Pad SWMP

Sect. 17, T. 9 S., R. 93 W., 6th P.M., Mesa County, CO

Job# 2010-349.001

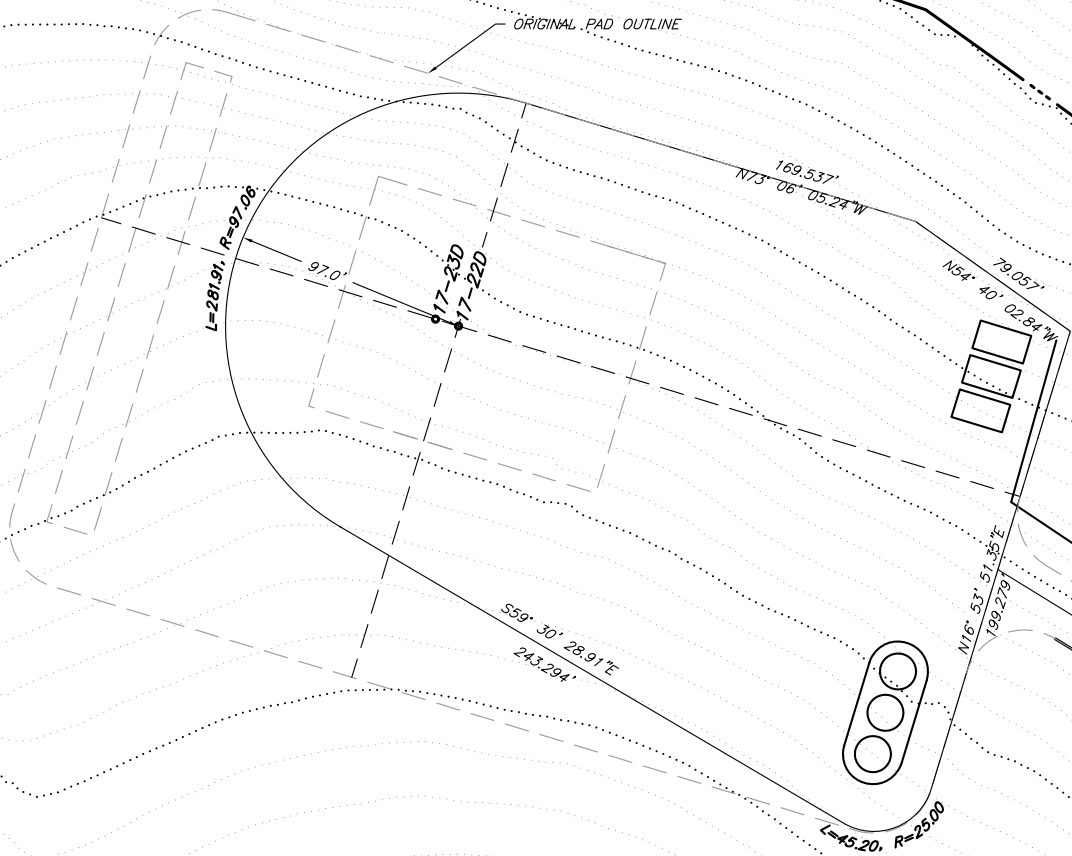
Date: 9.22.11

By: DCS

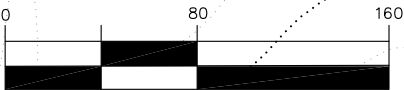
File: ElkRanchBM.dwg

Notes:

1. Topsoil and seed new cut and fill slopes and new disturbed areas for reclaimed pad according to specs on sheet 2L.
2. Cut slopes to be no steeper than 2.5:1 and fill slopes to be no steeper than 3:1 unless slope grade will cause disturbance on previously undisturbed ground.
3. Use original pad material to fill in cut slopes and layback fill slopes for the reclaimed surface.



GRAPHIC SCALE



( IN FEET )  
1 inch. = 80 ft.



SGM INC.

118 W. 6th Street, Suite 200  
Glenwood Springs, Colorado 81601  
(970) 945-1004 (FAX 945-5948)  
Aspen, Colorado (970) 925-6727

Scale: 1" = 80'

Sheet 2M of 8

Elk Ranch Pad

Elk Ranch Pad Construction Layout

Sect. 17, T. 9 S., R. 93 W., 6th P.M., Mesa County, CO

Job# 2010-349.001

Date: 7.19.11

By: DCS

File: ElkRanchBM.dwg