

PETROLEUM DEVELOPMENT CORP Weld County CO

Well Name: **Green 12-24H**

Surface Location: Green 12-24H Pad Sec.24-T7N-R65W
North American Datum 1983 , US State Plane 1983 , Colorado Northern Zone

Ground Elevation: 4900.0

+N/-S	+E/-W	Northing	Easting	Latitude	Longitude	Slot
0.0	0.0	1448825.00	3244640.79	40.562090	-104.619490	

Original Well Elev WELL @ 4915.0ft (Original Well Elev)

WELLBORE TARGET DETAILS

Name	TVD	+N/-S	+E/-W	Shape
HARDLINE SHL 460'FWL	1.0	-400.0	210.0	Polygon
HARDLINE BHL460'FEL	1.0	-390.0	4607.0	Polygon
BHL 1320'FNL & 500'FEL	7035.0	10.0	4567.0	Point



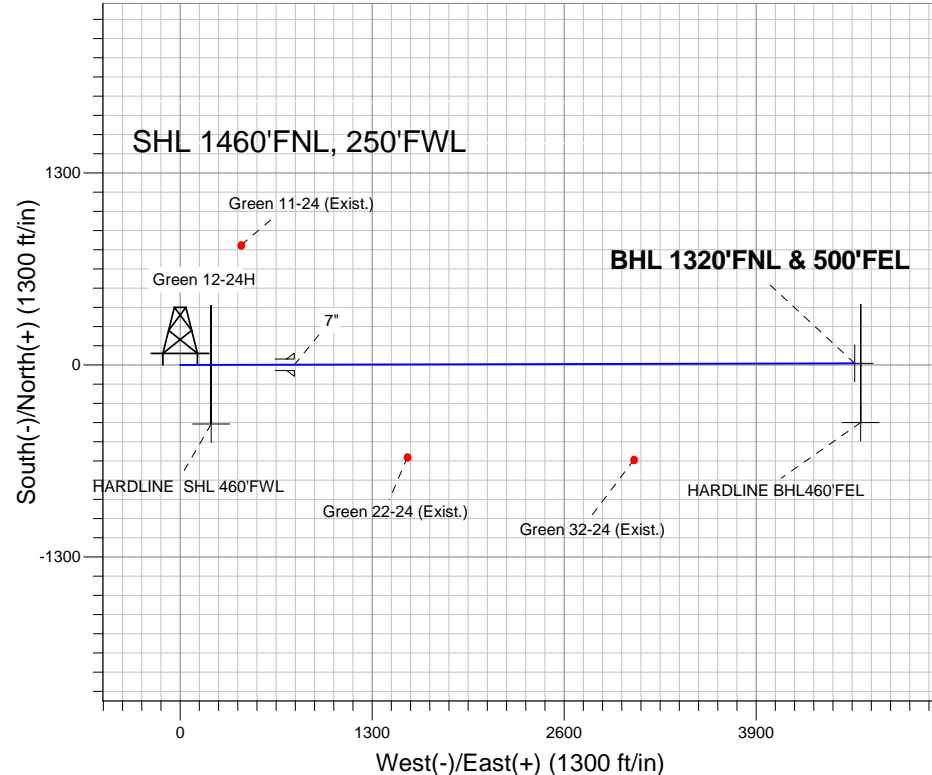
Azimuths to True North
Magnetic North: 8.77°

Magnetic Field
Strength: 53204.9snT
Dip Angle: 67.20°
Date: 9/14/2011
Model: IGRF2010

ANNOTATIONS

TVD	MD	Annotation
6316.1	6316.1	KOP
7080.0	7525.2	End of Build

Green 12-24H Pad Sec.24-T7N-R65W
Green 12-24H
Plan #1 (9-14-11)
8:26, September 15 2011



ENSIGN
Directional

SECTION DETAILS

Sec	MD	Inc	Azi	TVD	+N/-S	+E/-W	DLeg	TFace	VSec	Target
1	0.0	0.00	0.00	0.0	0.0	0.0	0.00	0.00	0.0	
2	6316.1	0.00	0.00	6316.1	0.0	0.0	0.00	0.00	0.0	
3	7525.2	90.68	89.87	7080.0	1.7	773.0	7.50	89.87	773.0	
4	11319.5	90.68	89.87	7035.0	10.0	4567.0	0.00	0.00	4567.0	BHL 1320'FNL & 500'FEL

