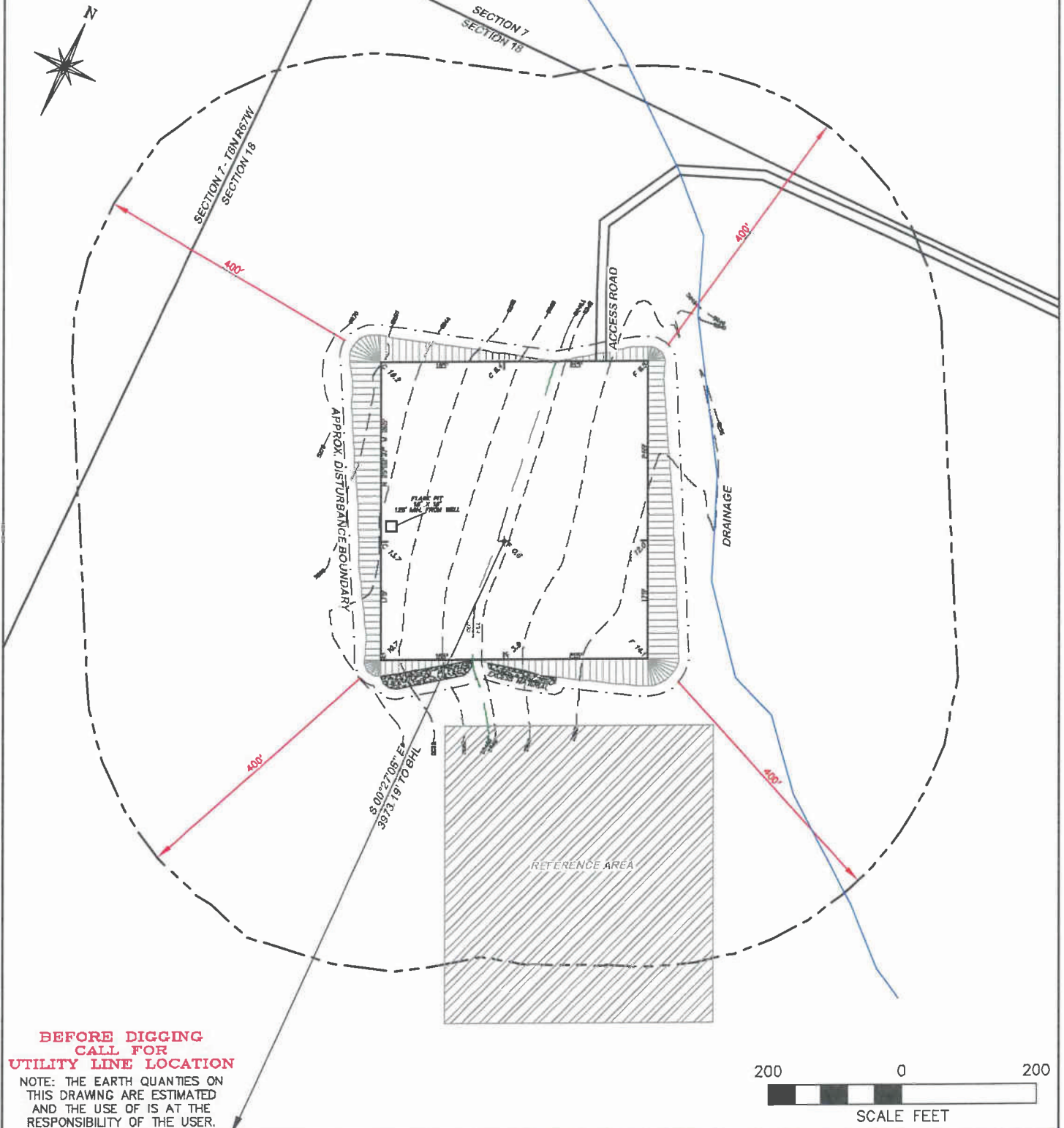


APPROXIMATE DISTURBANCE AREA: 6.0 ACRES±
 6.4% GRADE ON A EASTERLY SLOPE
 UNGRADED ELEVATION: 5245.5'
 FINISHED ELEVATION: 5246.1'

2A ATTACHMENT

2



RIFFIN & ASSOCIATES, INC.

(307) 362-5028

1414 ELK ST., ROCK SPRINGS, WY 82901

DRAWN: 9/16/11 - JMB

SCALE: 1" = 200'

REVISED: 9/21/11 - JMB

DRG JOB No. 18784

MOVED BHL

EXHIBIT 2C

LOCATION DRAWING

CHESAPEAKE ENERGY, LLC.

HEIBY 18-8-66 1H

SECTION 18, T8N, R66W

UNGRADED ELEVATION: 5245.5'

FINISHED ELEVATION: 5246.1'