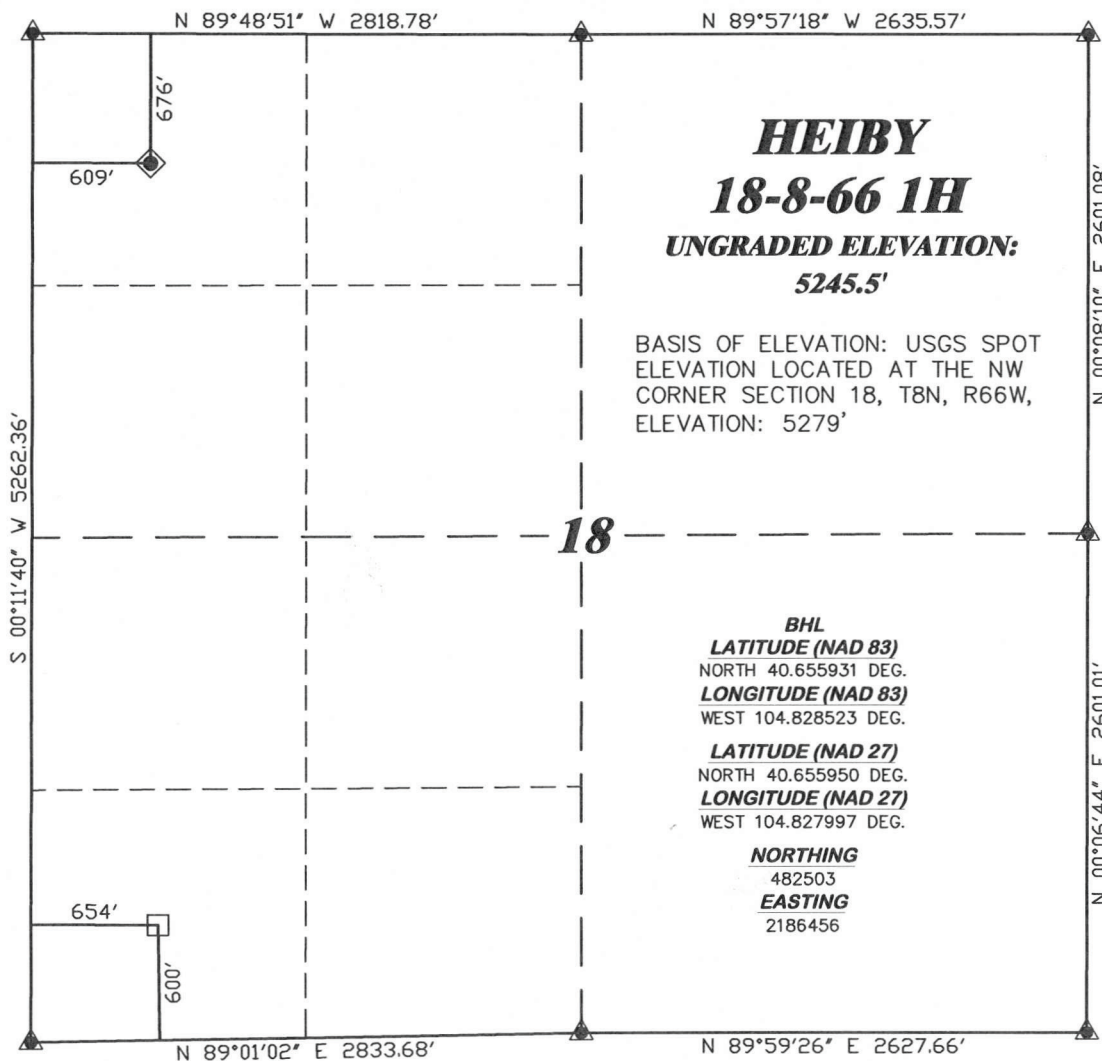


**R. 66 W.**



SCALE 1" = 1000'

**T. 8 N.**

**HEIBY**  
**18-8-66 1H**  
**UNGRADED ELEVATION:**  
**5245.5'**

BASIS OF ELEVATION: USGS SPOT  
ELEVATION LOCATED AT THE NW  
CORNER SECTION 18, T8N, R66W,  
ELEVATION: 5279'

**LATITUDE (NAD 83)**  
NORTH 40.666837 DEG.  
**LONGITUDE (NAD 83)**  
WEST 104.828527 DEG.

**LATITUDE (NAD 27)**  
NORTH 40.666856 DEG.  
**LONGITUDE (NAD 27)**  
WEST 104.828002 DEG.

**NORTHING**  
486476.04  
**EASTING**  
2186424.93

**BASIS OF BEARING/DATUM**  
SPCS CO CENTRAL NAD 27  
BASED ON NGS TRIANGULATION  
STATION "SHALE"

**BHL**  
**LATITUDE (NAD 83)**  
NORTH 40.655931 DEG.  
**LONGITUDE (NAD 83)**  
WEST 104.828523 DEG.  
**LATITUDE (NAD 27)**  
NORTH 40.655950 DEG.  
**LONGITUDE (NAD 27)**  
WEST 104.827997 DEG.

**NORTHING**  
482503  
**EASTING**  
2186456



**NOTES**

PRIARIE LANDS  
NO EXISTING FEATURES WITHIN  
400' RADIUS OF WELL SITE.

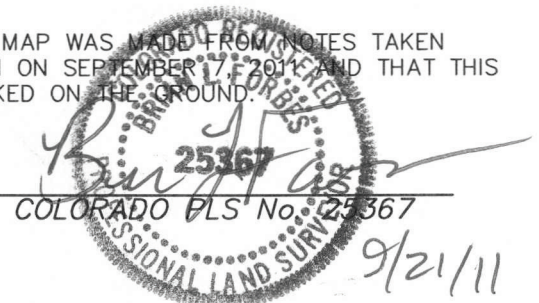
GPS OPERATOR PAUL ORME  
OBSERVED A PDOP OF 2.3.  
ALL GPS OBSERVATIONS ARE IN  
COMPLIANCE WITH COGCC RULE No.215.

**SURVEYOR'S STATEMENT**

I, BRAIN L. FORBES, OF ROCK SPRINGS, WYOMING, HEREBY STATE: THIS MAP WAS MADE FROM NOTES TAKEN DURING AN ACTUAL FIELD SURVEY DONE UNDER MY DIRECT SUPERVISION ON SEPTEMBER 17, 2011 AND THAT THIS PLAT CORRECTLY SHOWS THE LOCATION OF HEIBY 18-8-66 1H AS STAKED ON THE GROUND.

**LEGEND**

- ◆ WELL LOCATION
- BOTTOM HOLE LOC. (APPROX)
- FOUND MONUMENT
- ▲ PREVIOUSLY FOUND MONUMENT



**RIFFIN & ASSOCIATES, INC.**  
(307) 362-5028 1414 ELK ST., ROCK SPRINGS, WY 82901

**DRAWN: 9/16/11 - JMB**

**SCALE: 1" = 1000'**

**REVISED: 9/21/11 - JMB**

**DRG JOB No. 18784**

**MOVED BHL**

**EXHIBIT 1**

**PLAT OF DRILLING LOCATION**  
**FOR**  
**CHESAPEAKE ENERGY LLC.**

**676' F/NL & 609' F/WL, NWNW, SECTION 18,**  
**T. 8 N., R. 66 W., 6th P.M.**  
**WELD COUNTY, COLORADO**