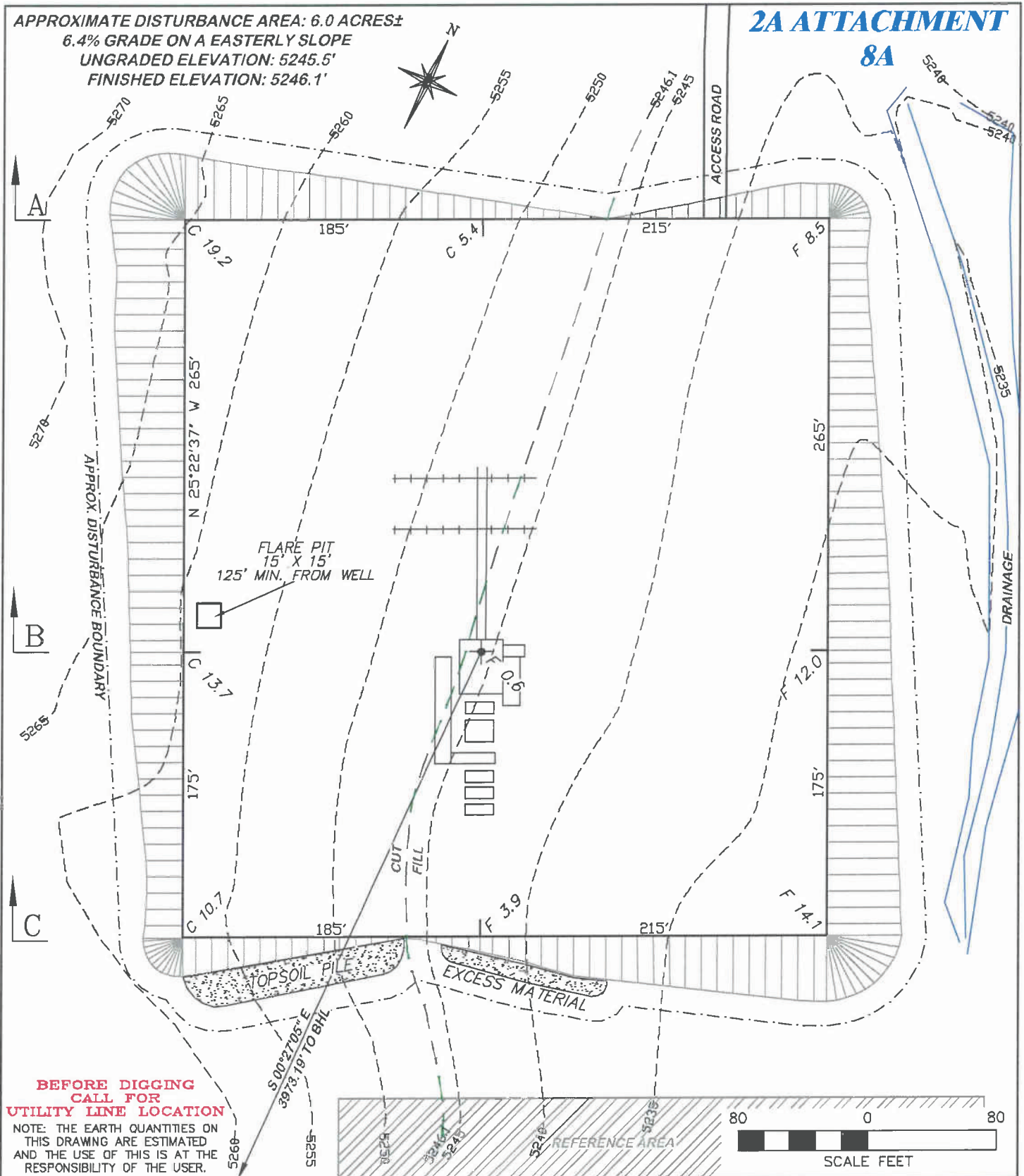


APPROXIMATE DISTURBANCE AREA: 6.0 ACRES±
 6.4% GRADE ON A EASTERLY SLOPE
 UNGRADED ELEVATION: 5245.5'
 FINISHED ELEVATION: 5246.1'

2A ATTACHMENT

8A



**BEFORE DIGGING
 CALL FOR
 UTILITY LINE LOCATION**

NOTE: THE EARTH QUANTITIES ON
 THIS DRAWING ARE ESTIMATED
 AND THE USE OF THIS IS AT THE
 RESPONSIBILITY OF THE USER.



RIFFIN & ASSOCIATES, INC.
 1414 ELK ST., ROCK SPRINGS, WY 82901

(307) 362-5028

DRAWN: 9/16/11 - JMB

SCALE: 1" = 80'

REVISED: 9/21/11 - JMB

DRG JOB No. 18784

MOVED BHL

EXHIBIT 2

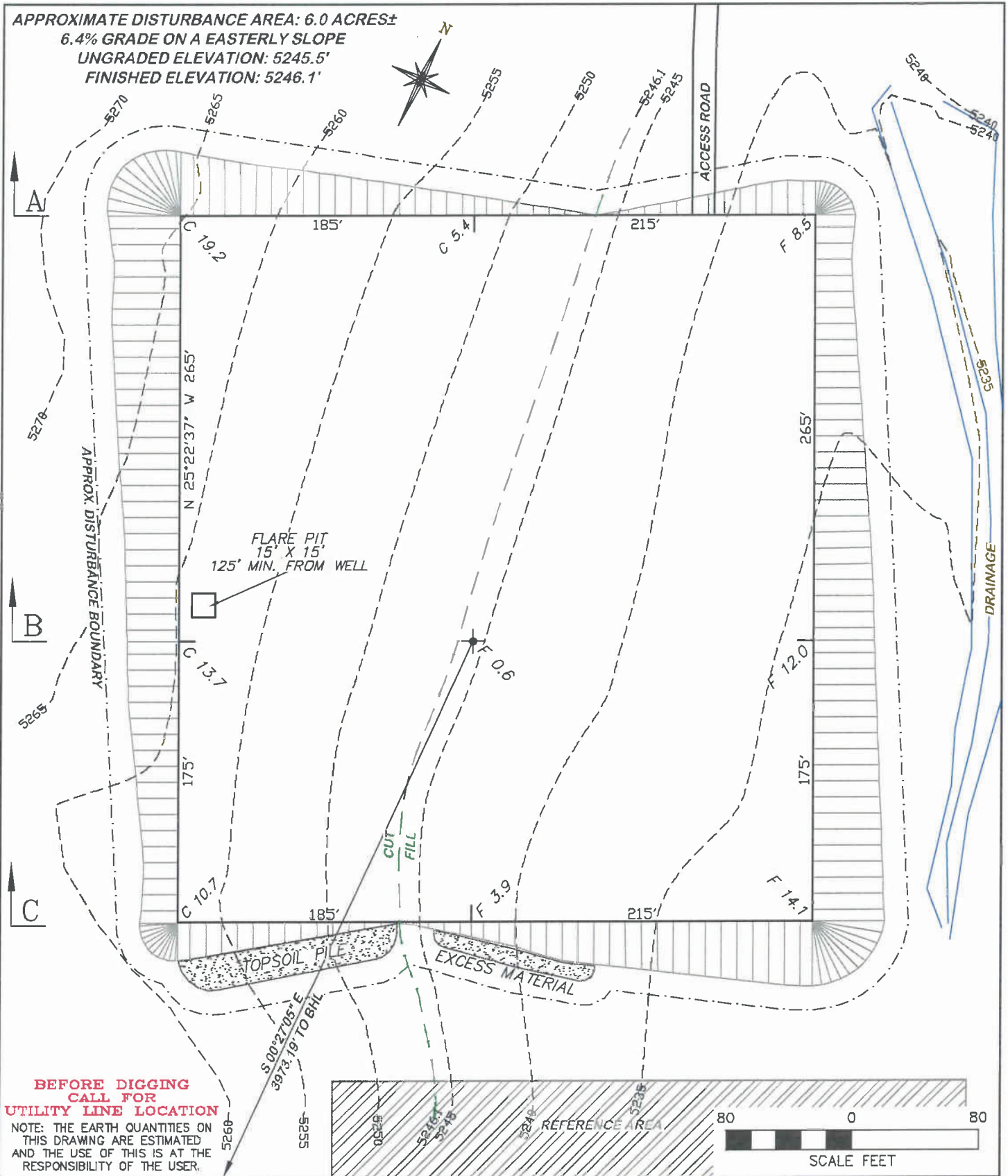
CONSTRUCTION LAYOUT DRAWING 1 OF 3

CHESAPEAKE ENERGY, LLC.
HEIBY 18-8-66 1H
SECTION 18, T8N, R66W

ESTIMATED EARTHWORK

ITEM	CUT	FILL	TOPSOIL	EXCESS
PAD	29502 CY	25433 CY	3260 CY	809 CY
PIT	0 CY			0 CY
TOTALS	29502 CY	25433 CY	3260 CY	809 CY

APPROXIMATE DISTURBANCE AREA: 6.0 ACRES±
 6.4% GRADE ON A EASTERLY SLOPE
 UNGRADED ELEVATION: 5245.5'
 FINISHED ELEVATION: 5246.1'



**BEFORE DIGGING
 CALL FOR
 UTILITY LINE LOCATION**
 NOTE: THE EARTH QUANTITIES ON
 THIS DRAWING ARE ESTIMATED
 AND THE USE OF THIS IS AT THE
 RESPONSIBILITY OF THE USER.

DRG RIFFIN & ASSOCIATES, INC.
 (307) 362-5028 1414 ELK ST., ROCK SPRINGS, WY 82901

CONSTRUCTION LAYOUT DRAWING 2 OF 3

CHESAPEAKE ENERGY, LLC.
HEIBY 18-8-66 1H
SECTION 18, T8N, R66W

UNGRADED ELEVATION: 5245.5'
 FINISHED ELEVATION: 5246.1'

DRAWN: 9/16/11 - JMB

SCALE: 1" = 80'

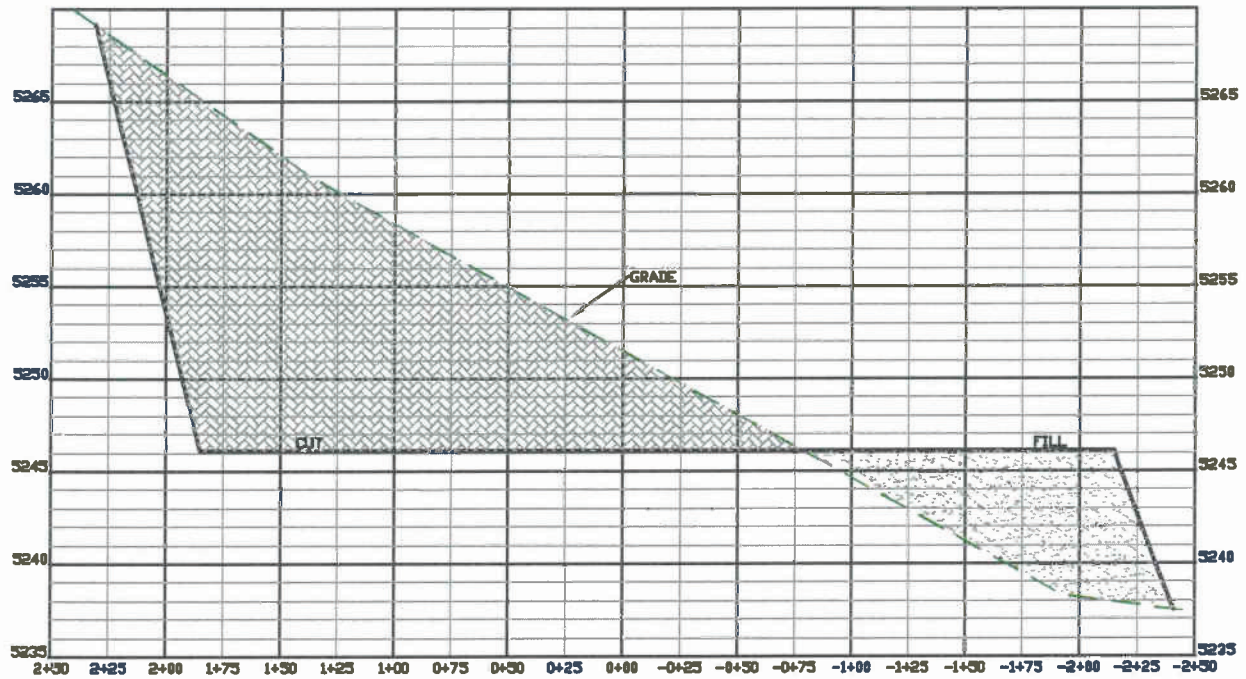
REVISED: 9/21/11 - JMB

DRG JOB No. 18784

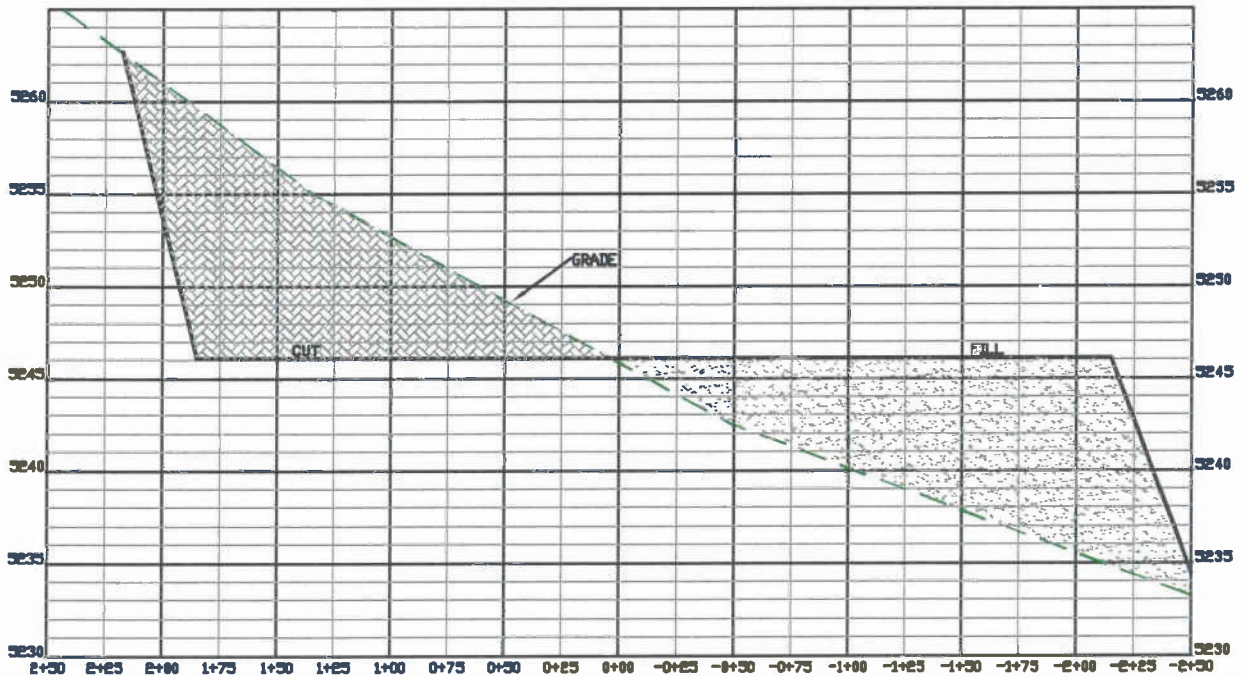
MOVED BHL

EXHIBIT 2A

**2A ATTACHMENT
8B**



A



B



RIFFIN & ASSOCIATES, INC.
1414 ELK ST., ROCK SPRINGS, WY 82901

(307) 362-5028

DRAWN: 9/16/11 - JMB

HORZ. 1" = 80' VERT. 1" = 10'

REVISED: NA

DRG JOB No. 18784

EXHIBIT 3A

CONSTRUCTION LAYOUT DRAWING 3 OF 3

CHESAPEAKE ENERGY, LLC.

HEIBY 18-8-66 1H

SECTION 18, T8N, R66W

UNGRADED ELEVATION: 5245.5'
FINISHED ELEVATION: 5246.1'