

**CEMENT BOND
LOG**

Company Pioneer Natural Res.
Well Graham 32-22 Tr
Field Purgatoire River
County Las Animas
State Colorado

Company Pioneer Natural Resources
Well Graham 32-22 Tr
Field Purgatoire River
County Las Animas State Colorado

Location: API #: 05 071 09874 00

SEC 22 TWP 32S RGE 66W

Permanent Datum Ground Level Elevation 7513'

Log Measured From Kelly Bushing 4' Above G L

Drilling Measured From Kelly Bushing

Elevation

K.B. 7517'

D.F. 7513'

G.L. 7513'

Date 8-23-11

Run Number One

Depth Driller 1970'

Depth Logger 1929'

Bottom Logged Interval 1927'

Top Log Interval Surf.

Open Hole Size 7 7/8"

Type Fluid Water

Density / Viscosity ///

Max. Recorded Temp. 62'

Estimated Cement Top Portable Mast

Time Well Ready 3:15 P.M.

Time Logger on Bottom 440

Equipment Number 440

Location Trinidad

Recorded By C. Sisneros

Witnessed By

Run Number

Bit From To

Size Weight From To

Size Wgt/Ft Top Bottom

Surface String 8 5/8 725'

Prot. String

Production String 5 1/2 TD

Liner

<<< Fold Here >>>

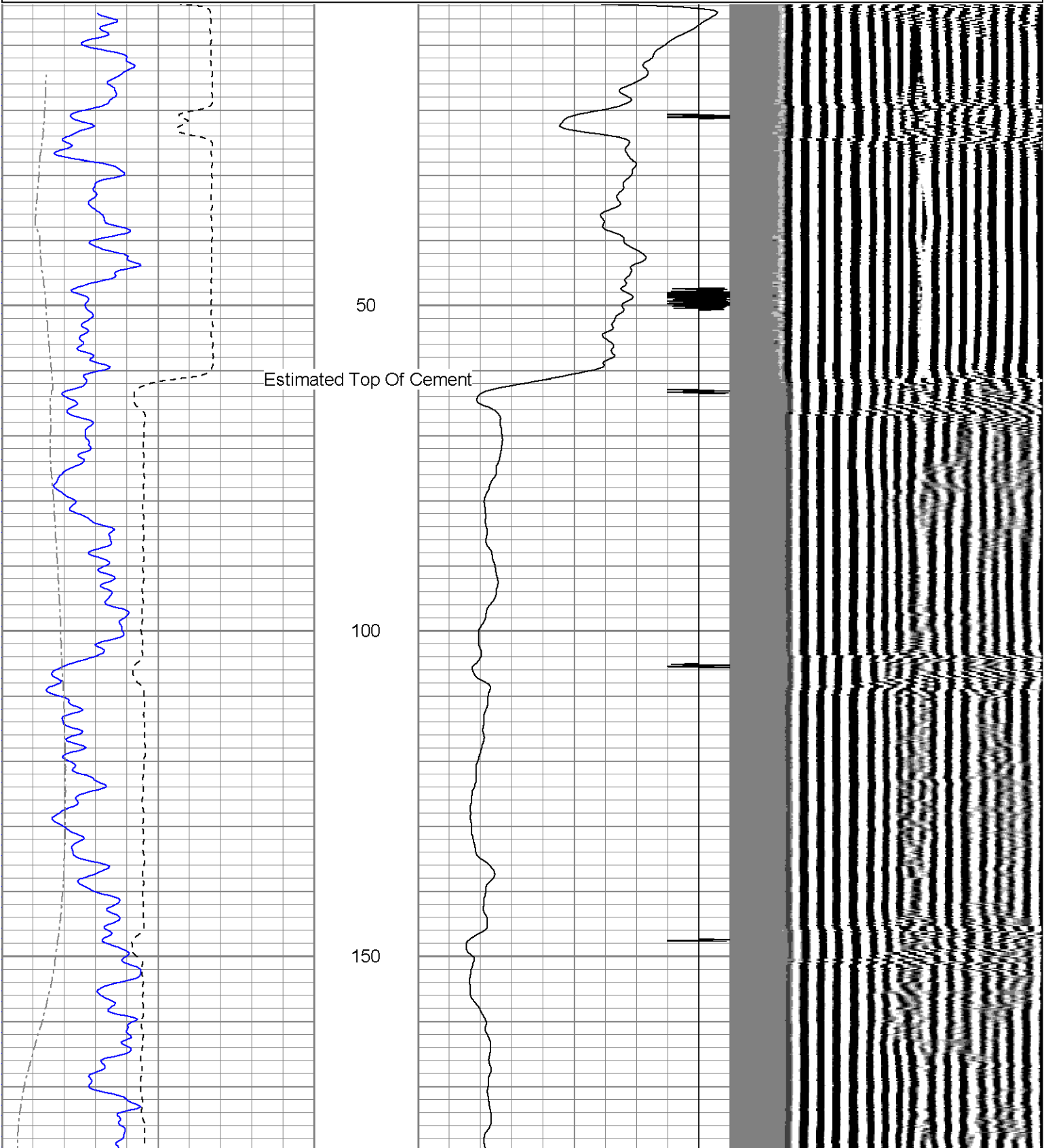
All interpretations are opinions based on inferences from electrical or other measurements and we cannot and do not guarantee the accuracy or correctness of any interpretation, and we shall not, except in the case of gross or willful negligence on our part, be liable or responsible for any loss, costs, damages, or expenses incurred or sustained by anyone resulting from any interpretation made by any of our officers, agents or employees. These interpretations are also subject to our general terms and conditions set out in our current Price Schedule.

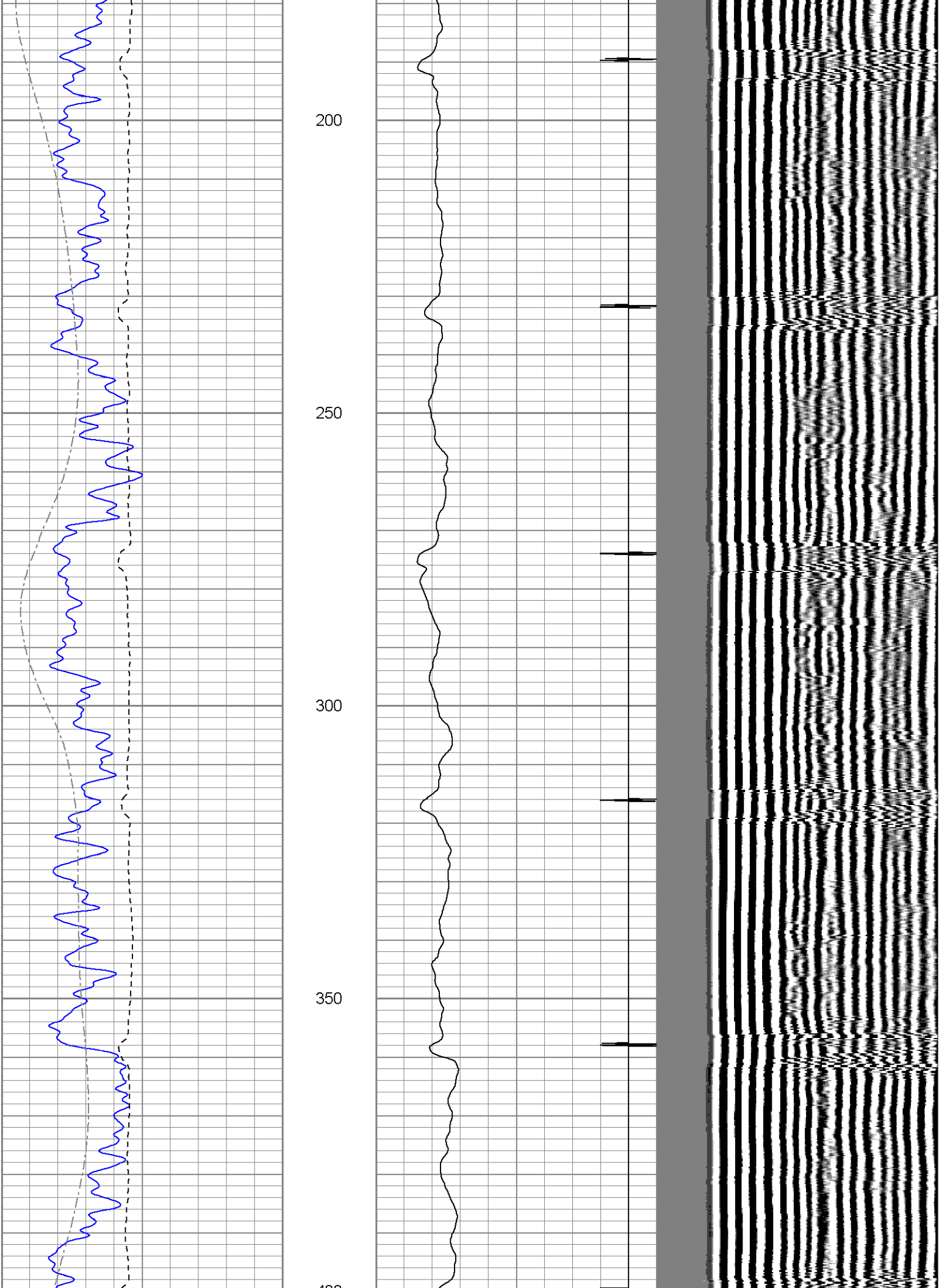
Comments

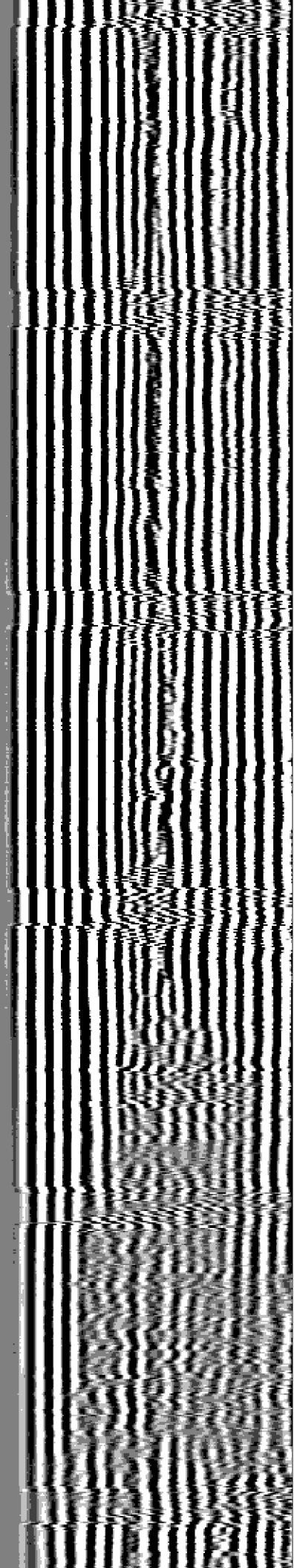
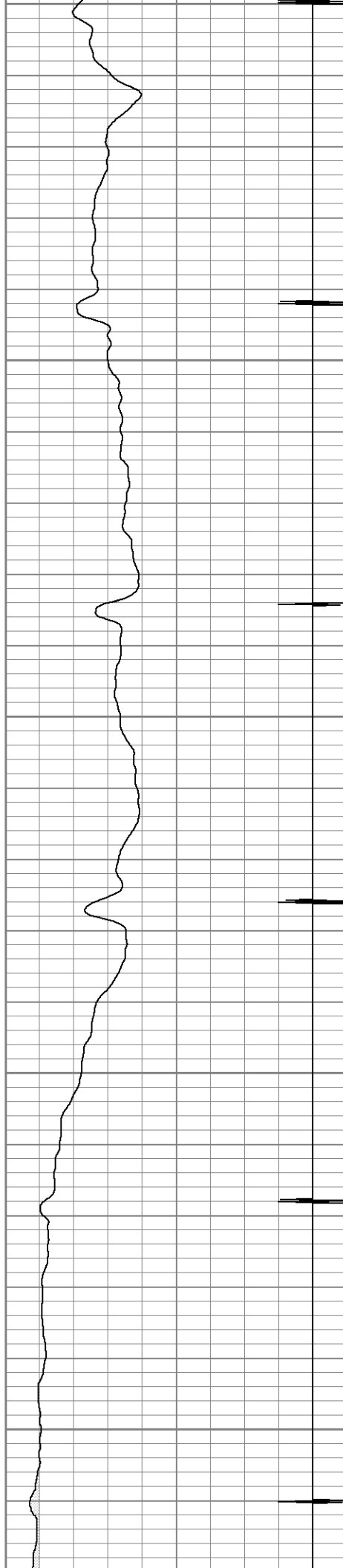
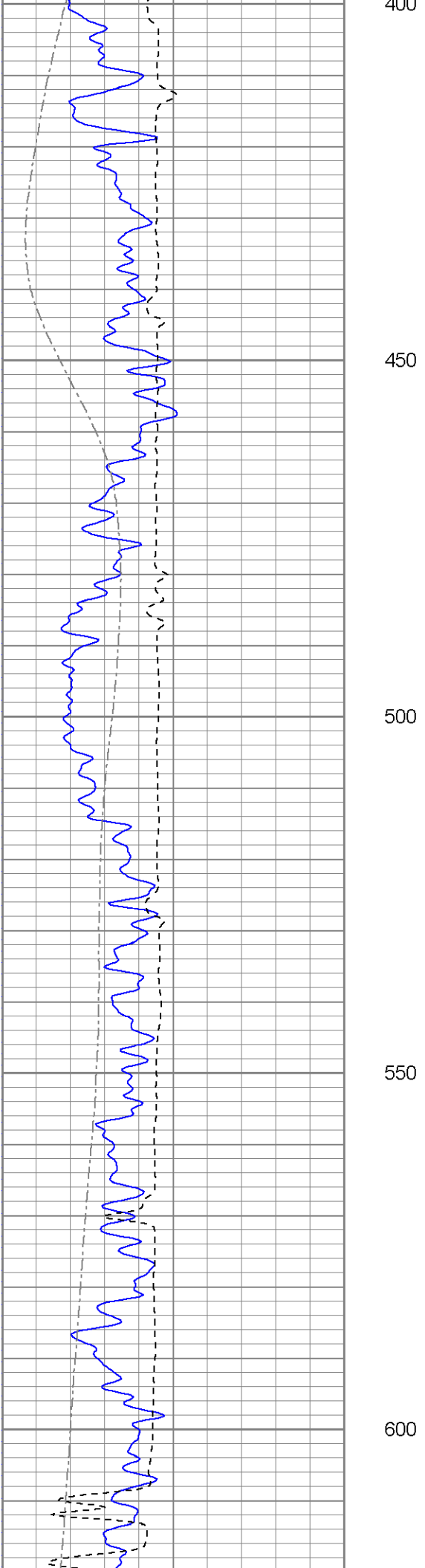
Bon Carbo left @ post office follow main rd to 30.1 stay straight ,
right @ Gourdins, straight to Wisphering Pines,
second left after crossing cattle gaurd, go thru gate, follow rd to dead end on location,
well is first on pad to right.

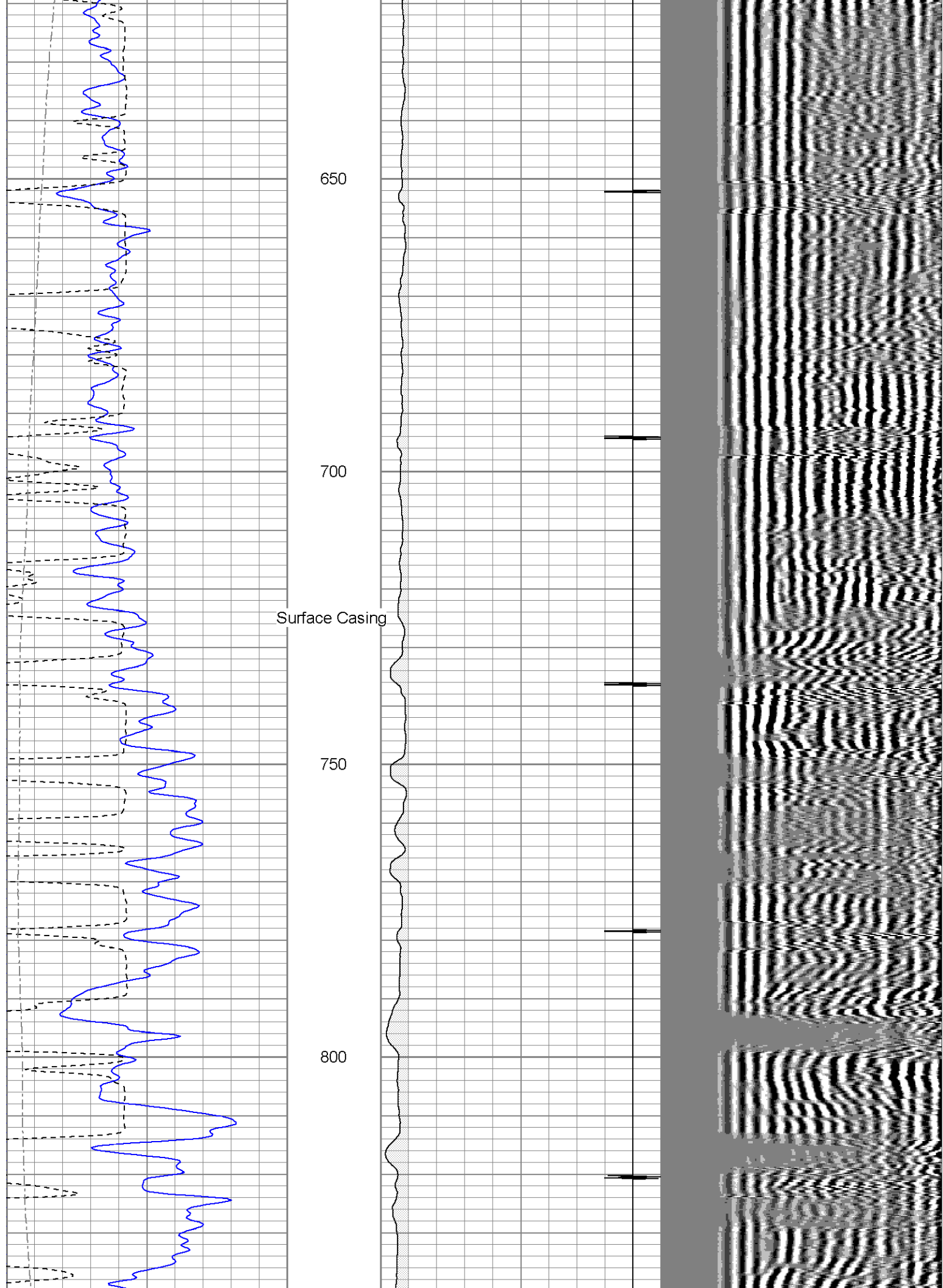
Database File: grahamtr82311b.db
Dataset Pathname: pass3
Presentation Format: cbl
Dataset Creation: Wed Jan 01 00:37:06 2003 by Log Open-Cased 071220
Charted by: Depth in Feet scaled 1:240

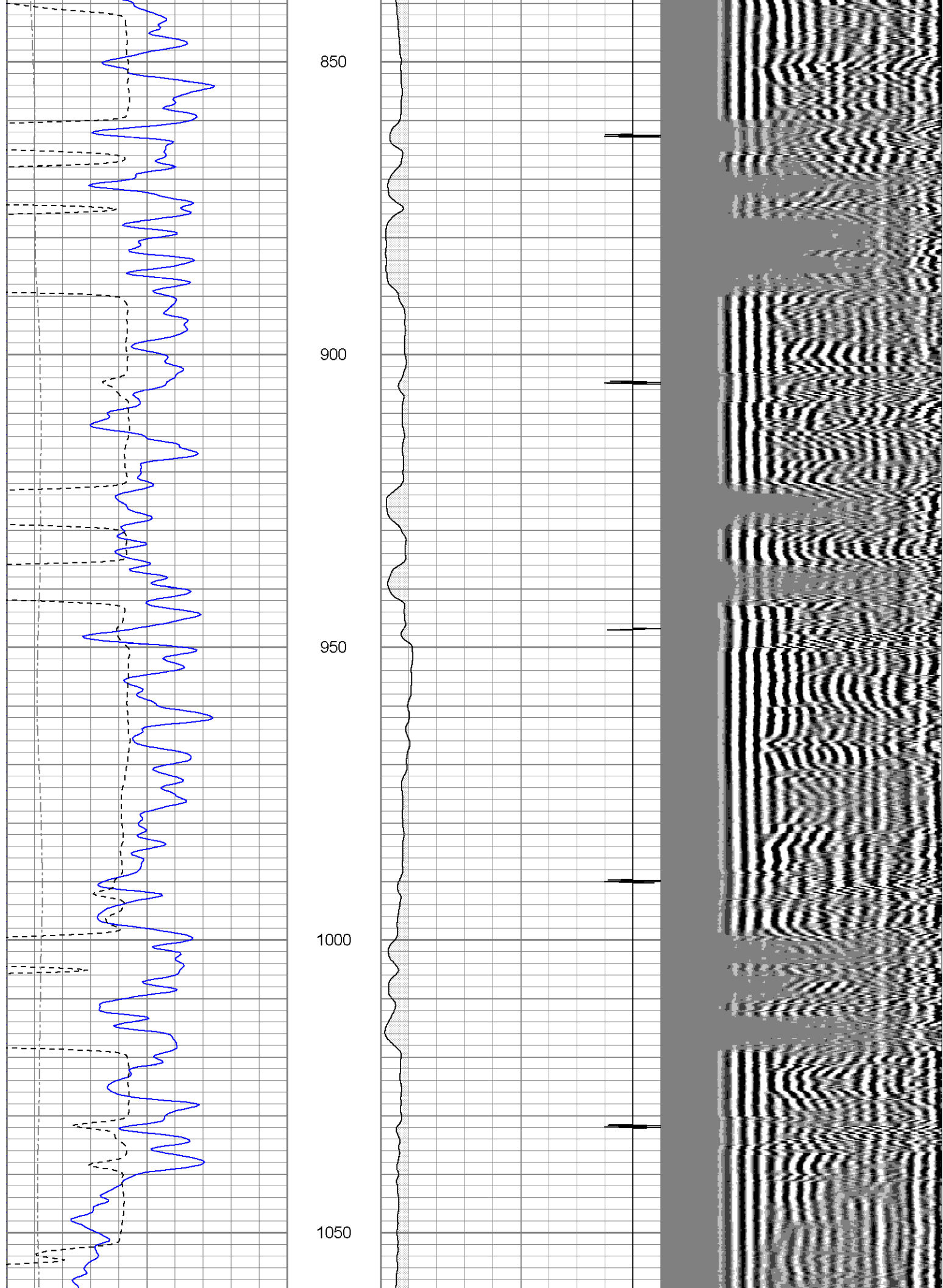
0	GR (GAPI)	200	18	CCL	-2	200	VDL	1200
200	GR (GAPI)	400	0	AMP3 (mV)	100			
400	TT3 (usec)	200						
0	DEVI (°)	10						

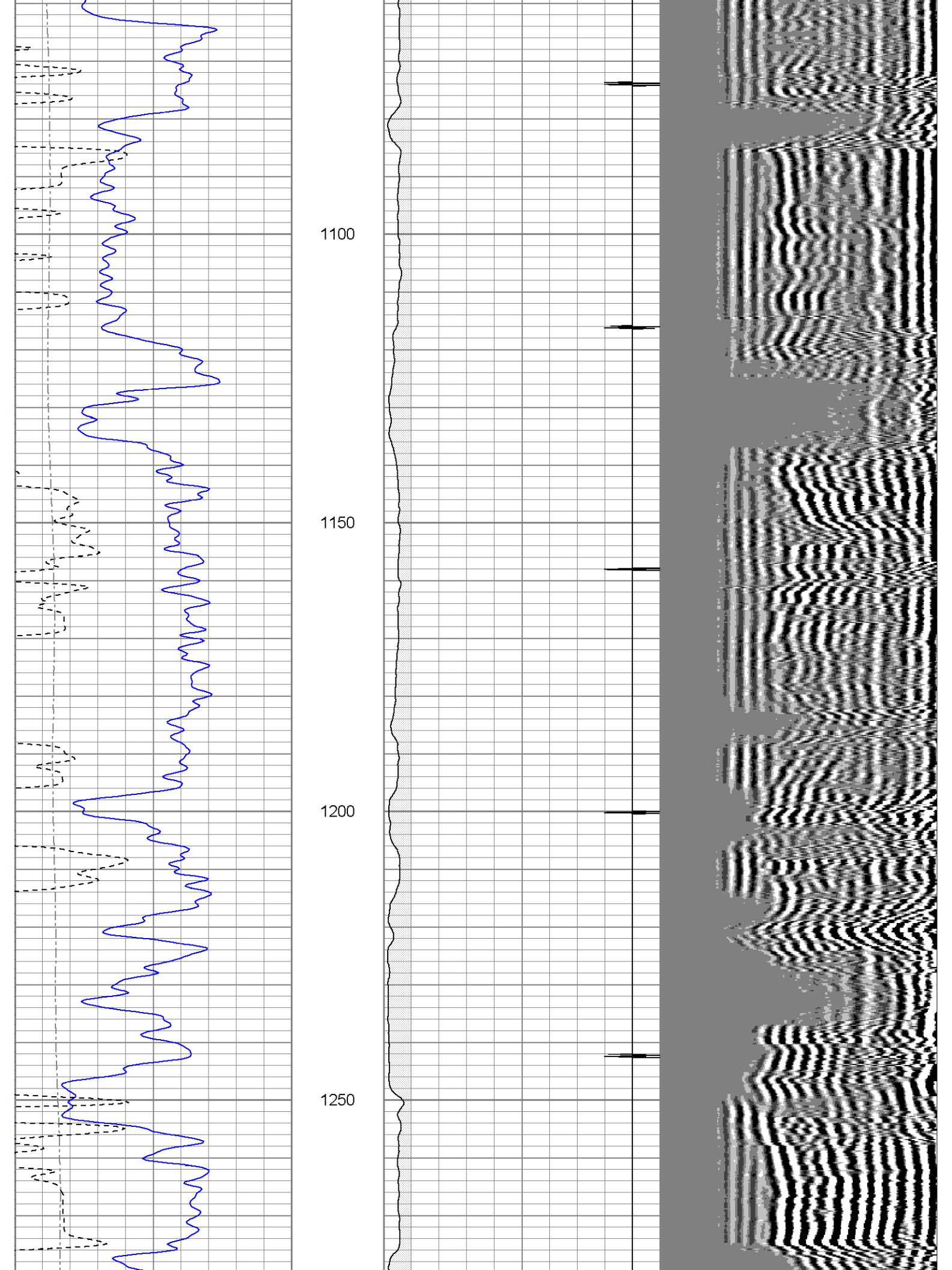


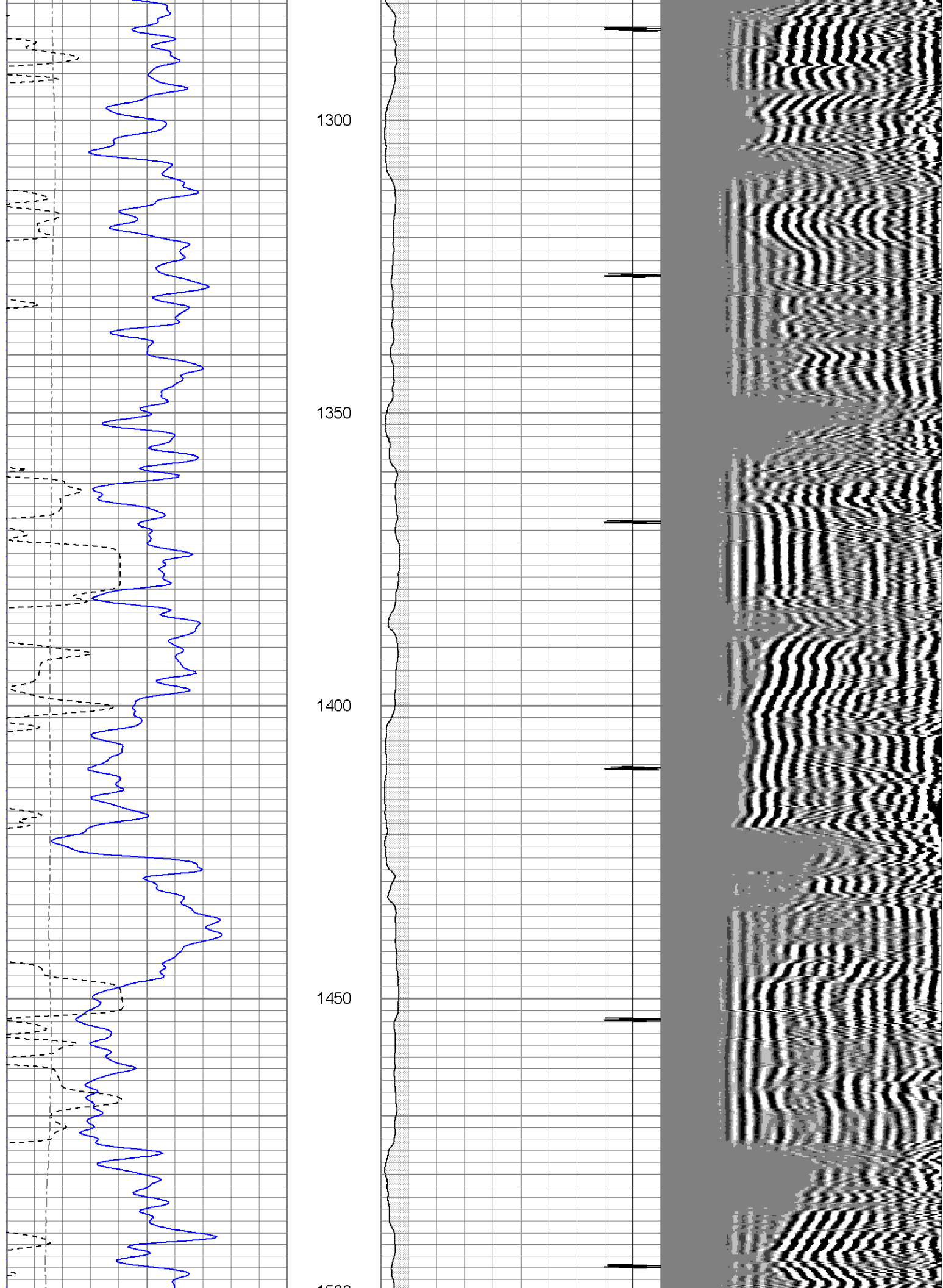


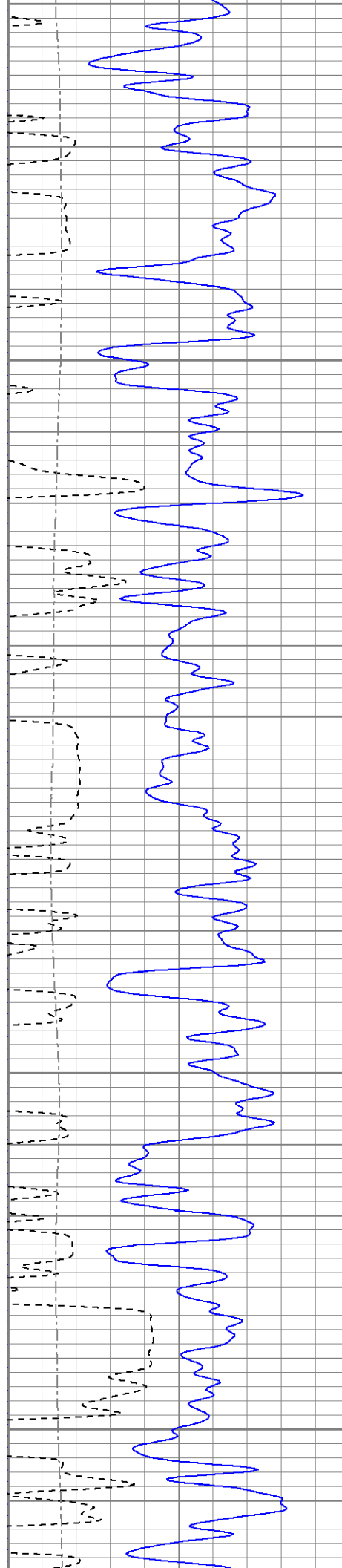




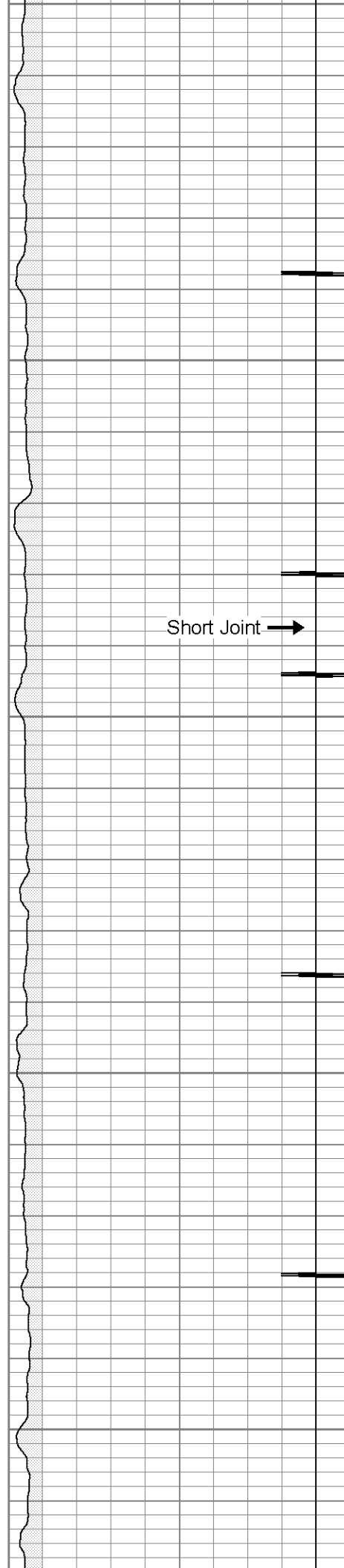




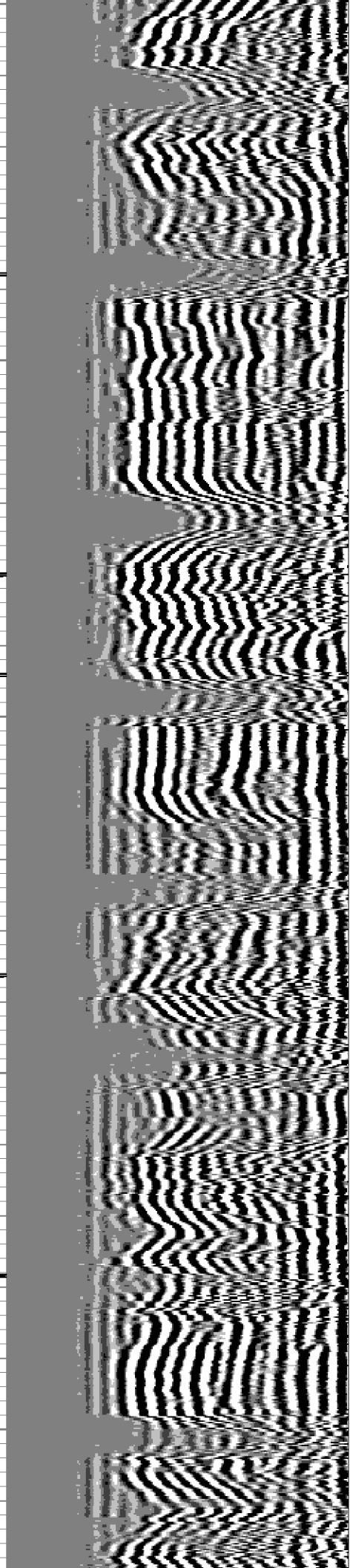


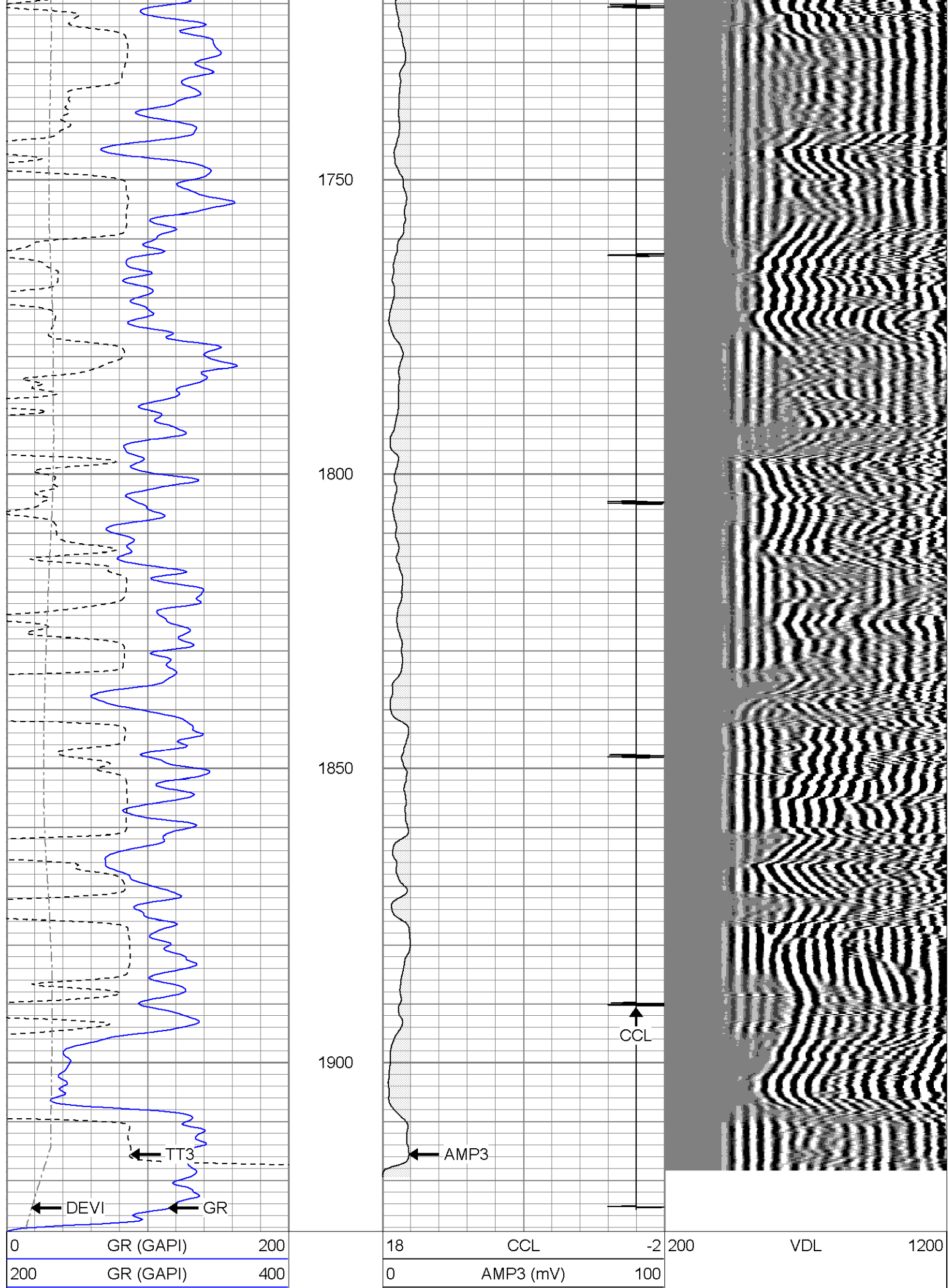


1500
1550
1600
1650
1700



Short Joint →





400	TT3 (usec)	200
0	DEVI (°)	10

The

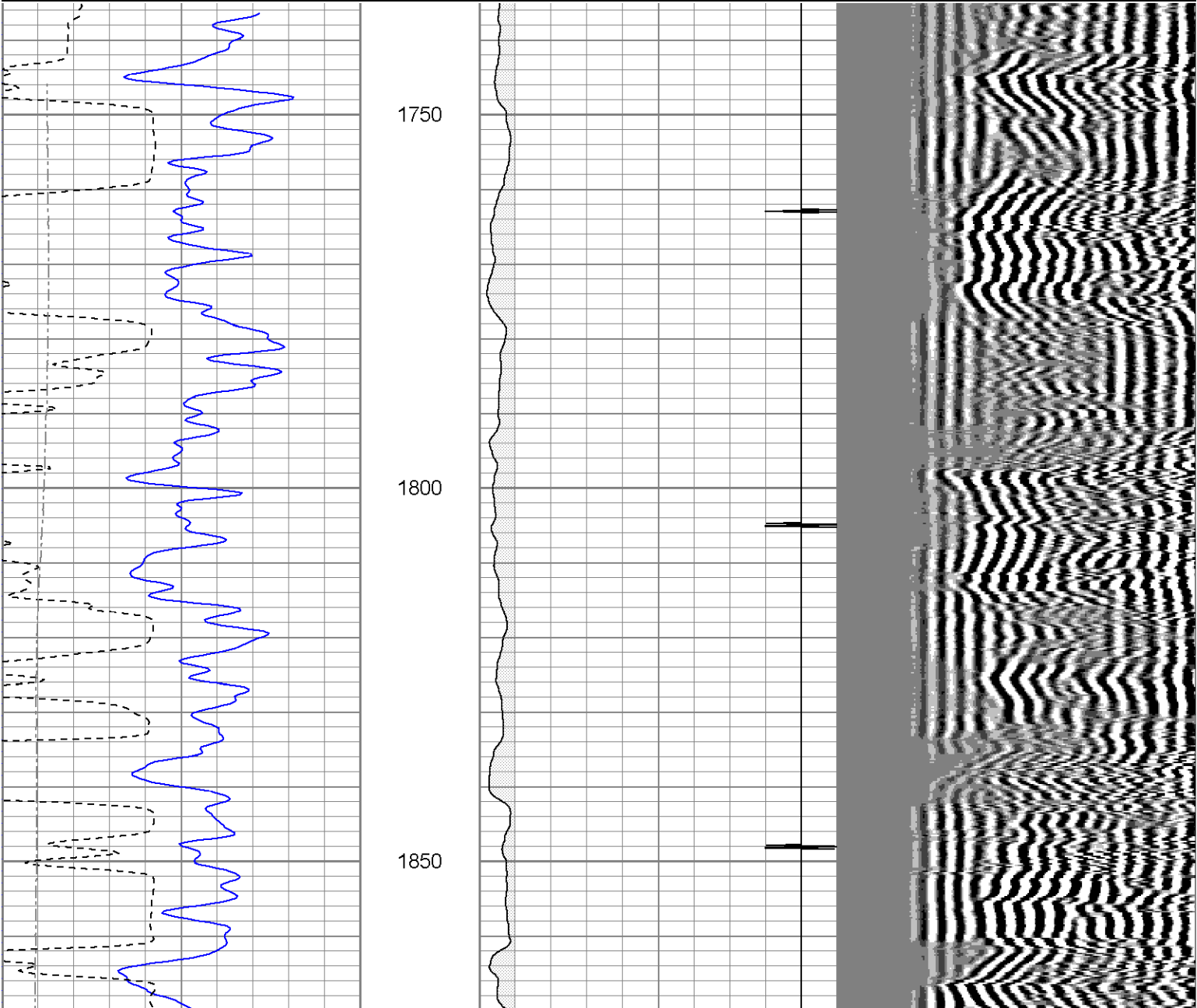
Perforators

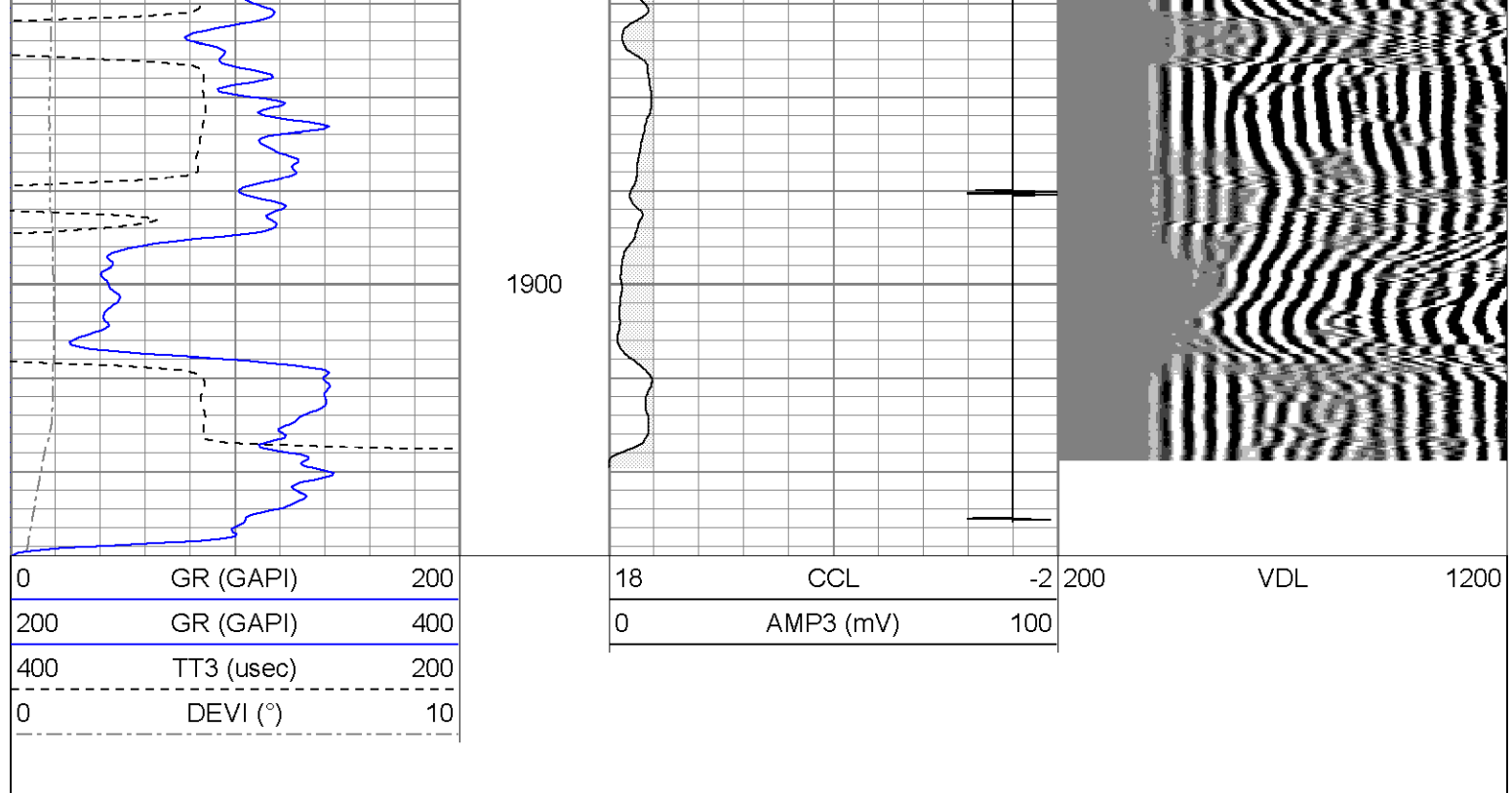
LLC

Repeat Pass

Database File:	grahamtr82311b.db
Dataset Pathname:	pass2
Presentation Format:	cbl
Dataset Creation:	Wed Jan 01 00:29:55 2003 by Log Open-Cased 071220
Charted by:	Depth in Feet scaled 1:240

0	GR (GAPI)	200	18	CCL	-2	200	VDL	1200
200	GR (GAPI)	400	0	AMP3 (mV)	100			
400	TT3 (usec)	200						
0	DEVI (°)	10						





Calibration Report

Database File: grahamtr82311b.db
Dataset Pathname: pass1
Dataset Creation: Wed Jan 01 00:20:05 2003 by Log Open-Cased 071220

Gamma Ray Calibration Report

Serial Number: 080616
Tool Model: 275D_INC
Performed: Sun Jun 13 14:33:21 1993

Calibrator Value: 1.0 GAPI

Background Reading: 0.0 cps
Calibrator Reading: 1.0 cps

Sensitivity: 1.0000 GAPI/cps

Inclinometer Calibration Report

Performed: Tue Jul 08 09:40:49 2008

	Low Read.	High Read.	Low Ref.	High Ref.	
X Accelerometer	-3583.40	3594.20	-1.00	1.00	gee
Y Accelerometer	-3588.80	3532.80	-1.00	1.00	gee
Z Accelerometer					

Cement Bond Log Calibration Report

Serial Number: 080201
Tool Model: PROBEDIITALCBL
Performed: Wed Jan 01 00:16:27 2003

Depth: 77.0518 ft
Casing Diameter: 5.5 in

