

EOG RESOURCES, INC.
ANSCHUTZ EAST PLATTE #13-17H
LOCATED IN WELD COUNTY, COLORADO
SECTION 17, T4N, R61W, 6th P.M.

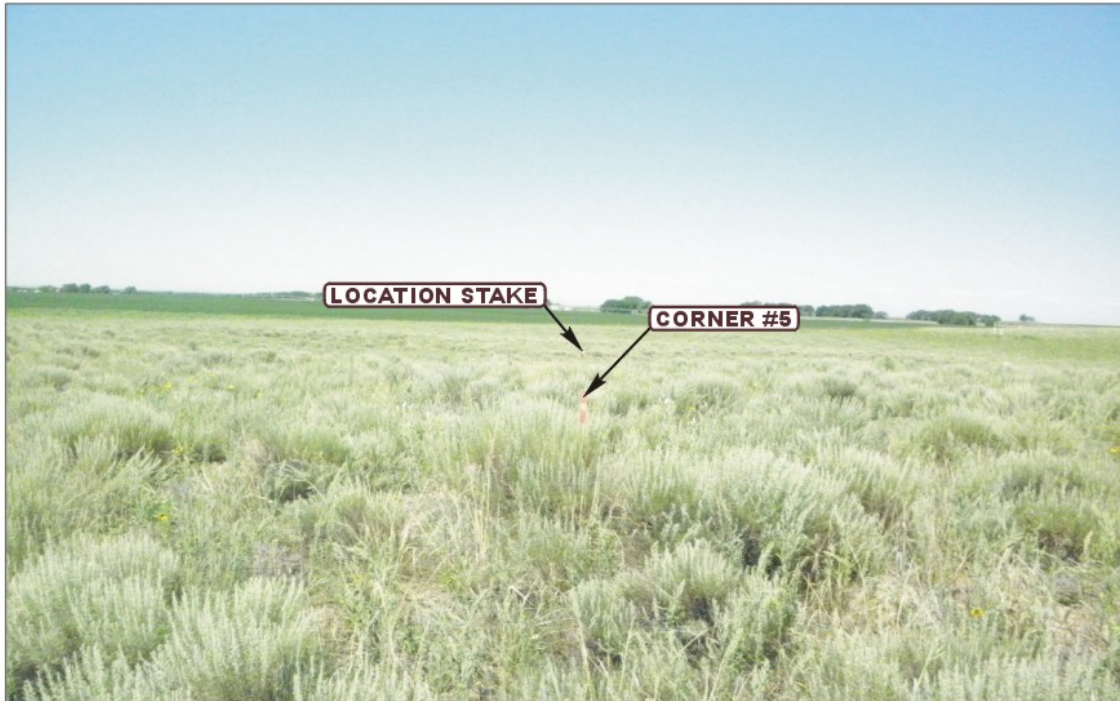


PHOTO: VIEW FROM CORNER #5 TO LOCATION STAKE

CAMERA ANGLE: WESTERLY



PHOTO: VIEW FROM BEGINNING OF PROPOSED ACCESS

CAMERA ANGLE: EASTERLY



- Since 1964 -

UELS

Uintah Engineering & Land Surveying
85 South 200 East Vernal, Utah 84078
(435) 789-1017 * FAX (435) 789-1813

LOCATION PHOTOS

08 **16** **11**
MONTH DAY YEAR

TAKEN BY: D.N.

DRAWN BY: A.W.

REVISED: 00-00-00

PHOTO

P1

EOG RESOURCES, INC.
ANSCHUTZ EAST PLATTE #13-17H
LOCATED IN WELD COUNTY, COLORADO
SECTION 17, T4N, R61W, 6th P.M.



PHOTO: VIEW OF LOCATION STAKE

CAMERA ANGLE: NORTHERLY



PHOTO: VIEW OF LOCATION STAKE

CAMERA ANGLE: EASTERLY



- Since 1964 -

UELS

Uintah Engineering & Land Surveying
85 South 200 East Vernal, Utah 84078
(435) 789-1017 * FAX (435) 789-1813

LOCATION PHOTOS

08 **16** **11**
MONTH DAY YEAR

TAKEN BY: D.N. DRAWN BY: A.W. REVISED: 00-00-00

PHOTO
P2

EOG RESOURCES, INC.
ANSCHUTZ EAST PLATTE #13-17H
LOCATED IN WELD COUNTY, COLORADO
SECTION 17, T4N, R61W, 6th P.M.



PHOTO: VIEW OF LOCATION STAKE

CAMERA ANGLE: SOUTHERLY



PHOTO: VIEW OF LOCATION STAKE

CAMERA ANGLE: WESTERLY



- Since 1964 -

UELS Uintah Engineering & Land Surveying
85 South 200 East Vernal, Utah 84078
(435) 789-1017 * FAX (435) 789-1813

LOCATION PHOTOS

08
MONTH

16
DAY

11
YEAR

PHOTO

P3

TAKEN BY: D.N.

DRAWN BY: A.W.

REVISED: 00-00-00