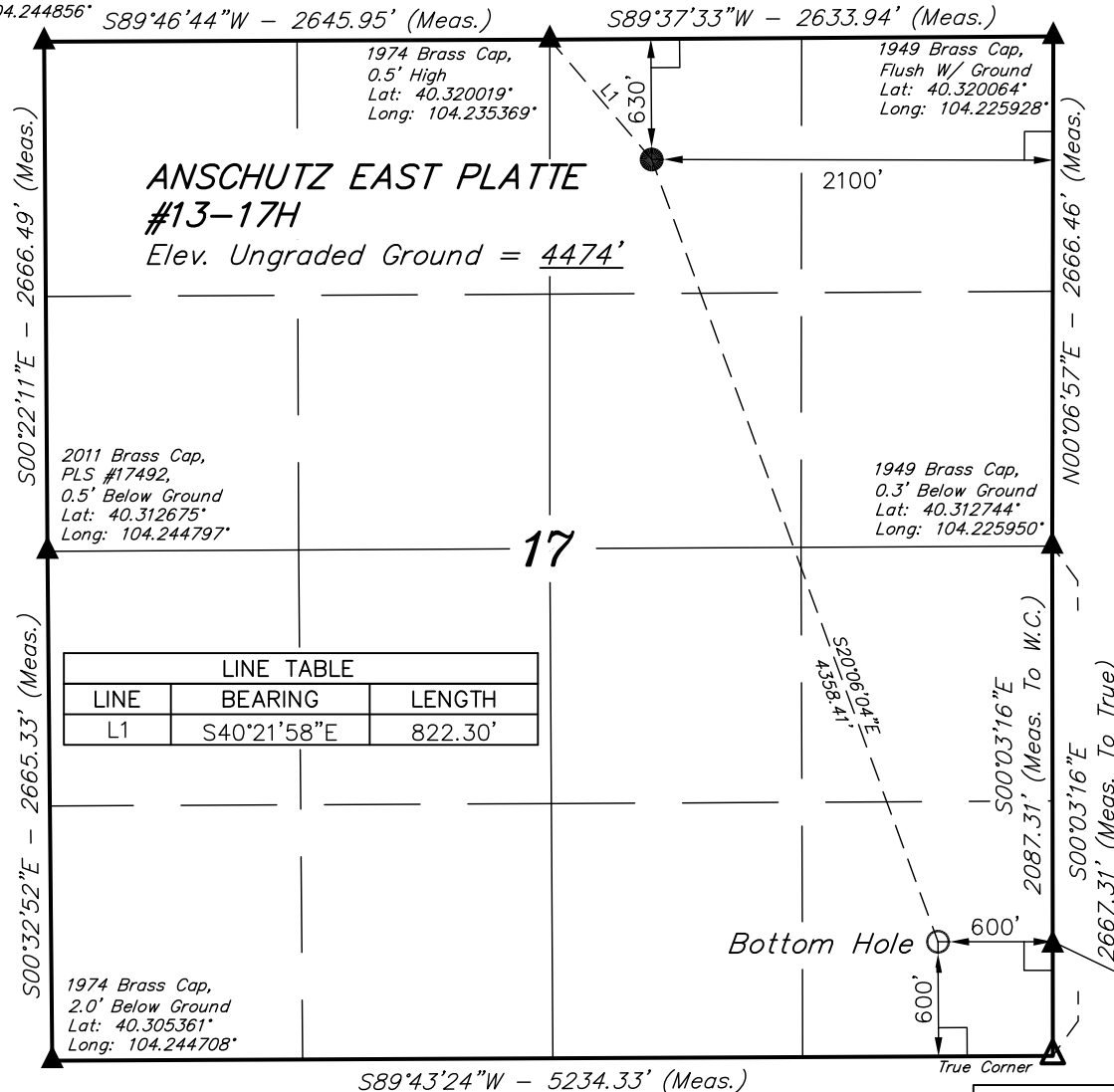


T4N, R61W, 6th P.M.

EOG RESOURCES, INC.

2011 Alum. Cap,
PLS #37897,
1.0' Below Ground
Lat: 40.319992°
Long: 104.244856°



Well location, ANSCHUTZ EAST PLATTE #13-17H, located as shown in the NW 1/4 NE 1/4 of Section 17, T4N, R61W, 6th P.M., Weld County, Colorado.

BASIS OF ELEVATION

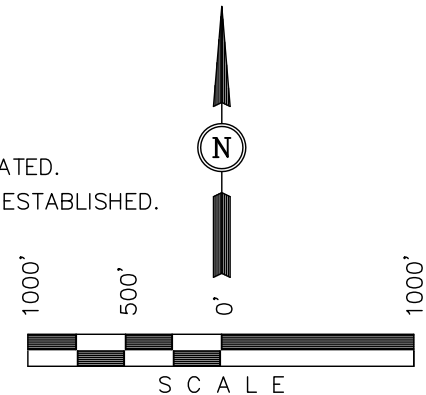
SPOT ELEVATION LOCATED AT THE NORTHEAST CORNER OF SECTION 24, T5N, R62W, 6th. P.M. TAKEN FROM THE POINT OF ROCKS, QUADRANGLE, COLORADO, WELD COUNTY, 7.5 MINUTE QUAD (TOPOGRAPHIC MAP) PUBLISHED BY THE UNITED STATES DEPARTMENT OF THE INTERIOR, GEOLOGICAL SURVEY. SAID ELEVATION IS MARKED AS BEING 4530 FEET.

BASIS OF BEARINGS

BASIS OF BEARINGS IS A G.P.S. OBSERVATION.

LEGEND:

- └ = 90° SYMBOL
- = PROPOSED WELL HEAD.
- ▲ = SECTION CORNERS LOCATED.
- △ = SECTION CORNERS RE-ESTABLISHED. (Not Set on Ground.)



CERTIFICATE

THIS IS TO CERTIFY THAT THE ABOVE PLAT WAS PREPARED FROM FIELD NOTES OF ACTUAL SURVEYS MADE BY ME OR UNDER MY SUPERVISION AND THAT THE SAME ARE TRUE AND CORRECT TO THE BEST OF MY KNOWLEDGE AND BELIEF.

W.C. 2011 Alum. Cap,
RLS #17492
580' South to True Cor.
Lat: 40.307017°
Long: 104.225947°

REVISED: 09-21-11 T.B.

REGISTERED LAND SURVEYOR
REGISTRATION NO. 17492
STATE OF COLORADO
09-21-11

UINTAH ENGINEERING & LAND SURVEYING
85 SOUTH 200 EAST - VERNAL, UTAH 84078
(435) 789-1017

NAD 83 (TARGET BOTTOM HOLE)	NAD 83 (SURFACE LOCATION)
LATITUDE = 40°18'25.43" (40.307064)	LATITUDE = 40°19'05.88" (40.318300)
LONGITUDE = 104°13'41.15" (104.228097)	LONGITUDE = 104°14'00.46" (104.233461)
NAD 27 (TARGET BOTTOM HOLE)	NAD 27 (SURFACE LOCATION)
LATITUDE = 40°18'25.50" (40.307083)	LATITUDE = 40°19'05.95" (40.318319)
LONGITUDE = 104°13'39.33" (104.227592)	LONGITUDE = 104°13'58.64" (104.232956)
STATE PLANE NAD 83	STATE PLANE NAD 83
N: 1357248.32 E: 3354711.54	N: 1361319.70 E: 3353157.29
STATE PLANE NAD 27	STATE PLANE NAD 27
N: 357250.88 E: 2354861.95	N: 361322.14 E: 2353307.63

SCALE 1" = 1000'	DATE SURVEYED: 07-19-11	DATE DRAWN: 07-20-11
PARTY D.N. C.E. T.B.	REFERENCES G.L.O. PLAT	
WEATHER WARM	FILE EOG RESOURCES, INC.	