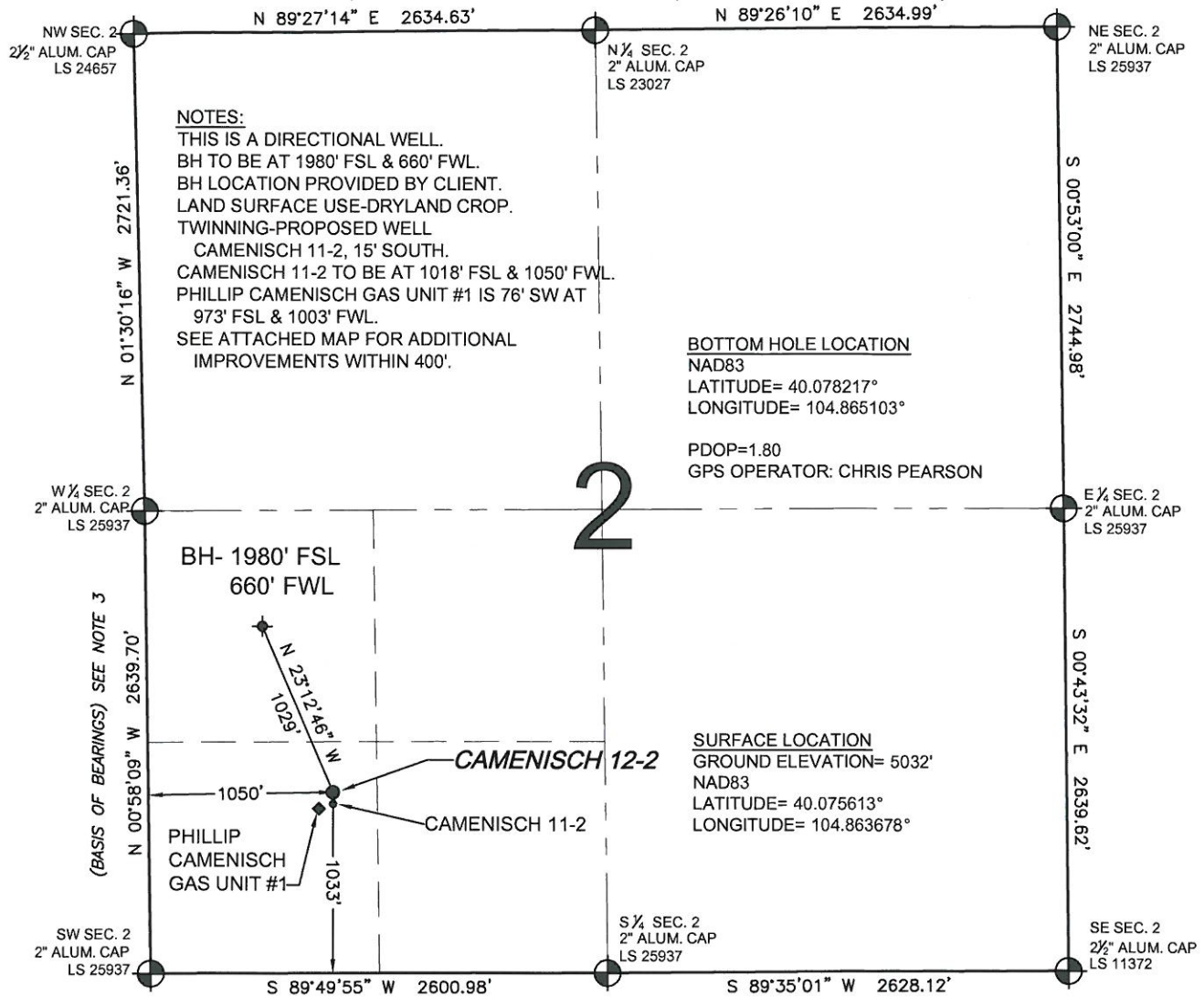


# WELL LOCATION CERTIFICATE: CAMENISCH 12-2

SECTION 2, TOWNSHIP 1 NORTH, RANGE 67 WEST, 6TH P.M.



## BOTTOM HOLE LOCATION

NAD83  
LATITUDE= 40.078217°  
LONGITUDE= 104.865103°

PDOP=1.80  
GPS OPERATOR: CHRIS PEARSON

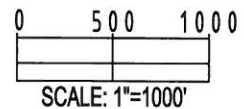
## SURFACE LOCATION

GROUND ELEVATION= 5032'  
NAD83  
LATITUDE= 40.075613°  
LONGITUDE= 104.863678°

WELL CAMENISCH 12-2 TO BE LOCATED 1033' FSL AND 1050' FWL, SECTION 2, T1N, R67W OF THE 6th P.M.

## LEGEND

- ⊙ = EXISTING MONUMENT    ⊙ = BOTTOM HOLE    BH = BOTTOM HOLE  
● = PROPOSED WELL    ◆ = EXISTING WELL

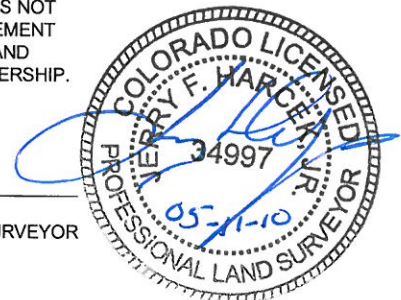


## NOTES:

- THIS SURVEY WAS DONE BY GPS METHODS AND CONFORMS TO THE MINIMUM STANDARDS SET BY THE C.O.G.C.C., RULE NO. 215
- ELEVATIONS SHOWN AT THE WELL HEAD, AS WELL AS HORIZONTAL CONTROL, ARE BASED ON GPS-RTK VALUES DERIVED FROM DOING 2-HOUR STATIC GPS SESSIONS AND REDUCTIONS USING O.P.U.S. SOLUTIONS.  
VERTICAL = NAVD88;    HORIZONTAL = NAD83/92
- THE BEARINGS SHOWN HEREON ARE BASED ON GPS OBSERVATIONS BETWEEN THE MONUMENTS SHOWN HEREON AS FOUND ON THE FIELD DATE BELOW.
- DISTANCES SHOWN ARE AT GROUND LEVEL, AS MEASURED IN THE FIELD, WITH TIES TO WELLS MEASURED AT A PERPENDICULAR TO SECTION LINES.

I, JERRY F. HARCEK JR., A LICENSED PROFESSIONAL LAND SURVEYOR IN THE STATE OF COLORADO DO HEREBY CERTIFY TO KERR-MCGEE OIL & GAS ONSHORE LP, THAT THE SURVEY AND WELL LOCATION CERTIFICATE SHOWN HEREON WERE DONE BY ME OR UNDER MY DIRECT SUPERVISION AND THAT THE DRAWING SHOWN HEREON ACCURATELY DEPICTS THE PROPOSED LOCATION OF THE WELL CAMENISCH 12-2. THIS CERTIFICATE DOES NOT REPRESENT A LAND SURVEY PLAT OR IMPROVEMENT SURVEY PLAT AS DEFINED BY C.R.S. 38-51-102 AND CANNOT BE RELIED UPON TO DETERMINE OWNERSHIP.

JERRY F. HARCEK JR., PLS 34997  
COLORADO LICENSED PROFESSIONAL LAND SURVEYOR  
FOR AND ON BEHALF OF P.F.S., LLC



PREPARED BY:	FIELD DATE:	WELL NAME:
PFS	04-30-10	CAMENISCH 12-2
Petroleum Field Services, LLC	DRAWING DATE:	SURFACE LOCATION:
1801 W. 13th Ave.	05-07-10	WELD COUNTY, COLORADO
Denver, CO 80204	BY:	SW 1/4 SW 1/4, SEC. 2, T1N, R67W
	CP	

NOTICE: ACCORDING TO COLORADO LAW YOU MUST COMMENCE ANY LEGAL ACTION BASED UPON ANY DEFECT IN THIS SURVEY WITHIN THREE YEARS AFTER YOU FIRST DISCOVER SUCH DEFECT. IN NO EVENT MAY ANY ACTION BASED UPON ANY DEFECT IN THIS SURVEY BE COMMENCED MORE THAN TEN YEARS FROM THIS SAID DATE OF THIS CERTIFICATION SHOWN HEREON.