

# T11N, R97W, 6th P.M.

2007 UELS Alum.  
 Cop: 40.935006°  
 Long: 108.306061°

S89°44'38"W - 2636.04' (Meas.)

S89°46'50"W - 2626.53' (Meas.)

2031'  
 575'

**BW MUSSER #59**  
 Elev. Ungraded Ground = 6699'

Set Marked Stone,  
 Pile of Stones,  
 Steel Post  
 Lat: 40.935039°  
 Long: 108.296525°

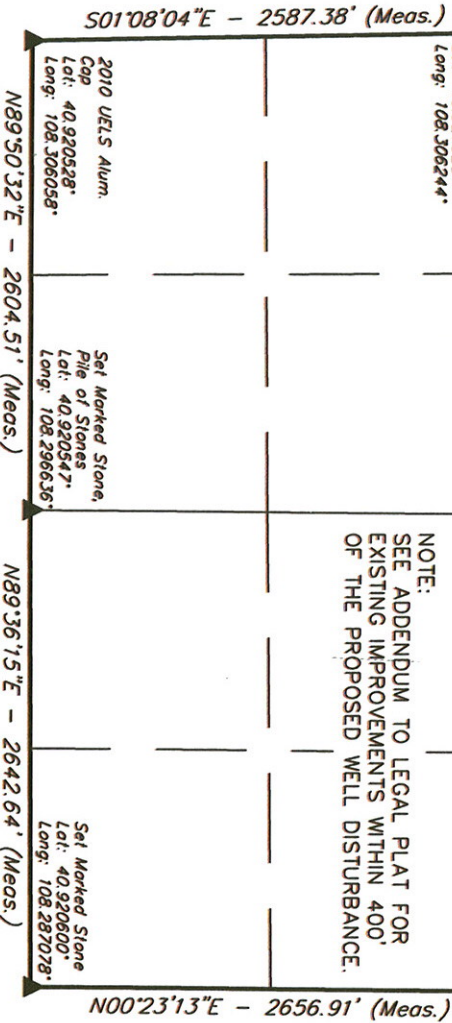
Set Marked Stone,  
 Pile of Stones,  
 Steel Post  
 Lat: 40.935067°  
 Long: 108.287022°

NOTE:  
 THE PROPOSED BOTTOM HOLE FOR THIS WELL IS  
 LOCATED IN THE SE 1/4 SW 1/4 OF SECTION 4,  
 T11N, R97W, 6th P.M. AT A DISTANCE OF 422' FSL  
 2445' FWL. IT BEARS N22°52'57"E 1084.64' FROM  
 THE PROPOSED WELL HEAD.

Set Marked Stone  
 Lat: 40.927625°  
 Long: 108.306244°

Set Marked Stone,  
 Steel Post, 3" NW  
 of Stone  
 Lat: 40.927889°  
 Long: 108.287014°

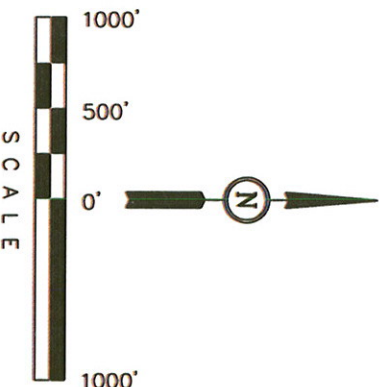
NOTE:  
 SEE ADDENDUM TO LEGAL PLAT FOR  
 EXISTING IMPROVEMENTS WITHIN 400'  
 OF THE PROPOSED WELL DISTURBANCE.



Well location, BW MUSSER #59, located  
 as shown in the NE 1/4 NW 1/4 of  
 Section 9, T11N, R97W, 6th P.M., Moffat  
 County, Colorado.

## BASIS OF ELEVATION

SPOT ELEVATION LOCATED AT THE SOUTHEAST CORNER OF  
 SECTION 4, T11N, R97W, 6th P.M. TAKEN FROM THE POWDER  
 WASH QUADRANGLE, COLORADO, MOFFAT COUNTY, 7.5  
 MINUTE SERIES (TOPOGRAPHICAL MAP) PUBLISHED BY THE  
 UNITED STATES DEPARTMENT OF THE INTERIOR, GEOLOGICAL  
 SURVEY. SAID ELEVATION IS MARKED AS BEING 6644 FEET.



## CERTIFICATE

THIS IS TO CERTIFY THAT THE ABOVE PLAT WAS PREPARED FROM  
 FIELD NOTES OF ACTUAL SURVEYS MADE BY ME OR UNDER MY  
 SUPERVISION AND THAT THE SAME ARE TRUE AND CORRECT TO THE  
 BEST OF MY KNOWLEDGE AND BELIEF.

REGISTERED LAND SURVEYOR  
 REGISTRATION NO. 12345  
 STATE OF COLORADO

REVISED: 02-03-11

**UTAH ENGINEERING & LAND SURVEYING**  
 85 SOUTH 200 EAST - VERNAL, UTAH 84078  
 (435) 789-1017

## LEGEND:

- = 90° SYMBOL
- = PROPOSED WELL HEAD.
- ▲ = SECTION CORNERS LOCATED.

## BASIS OF BEARINGS

BASIS OF BEARINGS IS A G.P.S. OBSERVATION.

PDOP = 1.1

NAD 83 (SURFACE LOCATION)
LATITUDE = 40°56'00.43" (40.933353)
LONGITUDE = 108°17'55.50" (108.298750)
NAD 27 (SURFACE LOCATION)
LATITUDE = 40°56'00.56" (40.933389)
LONGITUDE = 108°17'53.16" (108.298100)

SCALE	DATE SURVEYED:	DATE DRAWN:
1" = 1000'	08-30-10	09-13-10
PARTY	REFERENCES	FILE
D.K. B.H. S.L.	G.L.O. PLAT	WEXPRO COMPANY
WEATHER		
WARM		

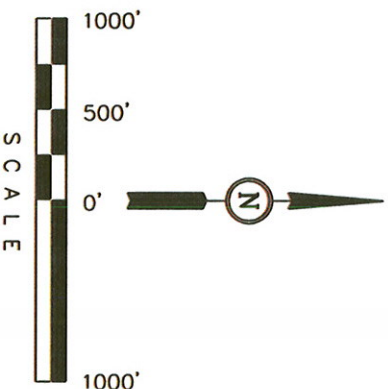
T11N, R97W, 6th P.M.

WEXPRO COMPANY

Well location, (Target Bottom Hole) BW  
MUSSEY #59, located as shown in the  
SE 1/4 SW 1/4 of Section 4, T11N,  
R97W, 6th P.M., Moffat County, Colorado.

BASIS OF ELEVATION

SPOT ELEVATION LOCATED AT THE SOUTHEAST CORNER OF  
SECTION 4, T11N, R97W, 6th P.M. TAKEN FROM THE POWDER  
WASH QUADRANGLE, COLORADO, MOFFAT COUNTY, 7.5  
MINUTE SERIES (TOPOGRAPHICAL MAP) PUBLISHED BY THE  
UNITED STATES DEPARTMENT OF THE INTERIOR, GEOLOGICAL  
SURVEY. SAID ELEVATION IS MARKED AS BEING 6644 FEET.



CERTIFICATE

THIS IS TO CERTIFY THAT THE ABOVE PLAT WAS PREPARED FROM  
FIELD NOTES OF ACTUAL SURVEYS MADE BY ME OR UNDER MY  
SUPERVISION AND THAT THE SAME ARE TRUE AND CORRECT TO THE  
BEST OF MY KNOWLEDGE AND BELIEF.

REGISTERED LAND SURVEYOR  
STATE OF COLORADO  
No. 12492  
J. L. [Signature]

REVISED: 02-03-11

UNTAH ENGINEERING & LAND SURVEYING  
85 SOUTH 200 EAST - VERNAL, UTAH 84078  
(435) 789-1017

SCALE	DATE SURVEYED:	DATE DRAWN:
1" = 1000'	08-30-10	09-13-10

PARTY	REFERENCES
D.K. B.H. S.L.	G.L.O. PLAT

WEATHER	FILE
WARM	WEXPRO COMPANY

LEGEND:

- 90° SYMBOL
- PROPOSED WELL HEAD.
- SECTION CORNERS LOCATED.

BASIS OF BEARINGS IS A G.P.S. OBSERVATION.

PDOP = 1.1

BASIS OF BEARINGS

2007 UELS Alum. N89°44'38"E - 2636.04' (Meas.)  
Cap Lot: 40.935006°  
Long: 108.306061°  
Set Marked Stone, Pile of Stones, Steel Post Lot: 40.935039°  
Long: 108.296525°  
N89°46'50"E 2626.53' (Meas.)  
Set Marked Stone, Pile of Stones, Steel Post Lot: 40.935067°  
Long: 108.287022°

S00°18'12"E - 2640.43' (Meas.)

N00°20'02"W - 2649.46' (Meas.)

N89°50'19"E - 2644.40' (Meas.)

N89°53'35"E - 2642.90' (Meas.)

T11N T12N

5/8" Rebar w/ 1 1/2" Alum. Cap, Broken Stone, Steel Post, Steel Rod Lot: 40.949519°  
Long: 108.306172°

Set Marked Stone Lot: 40.949542°  
Long: 108.296603°

1995 UELS Alum. Cap, 5/8" Rebar, Pile of Stones, Replaced Rebar w/ 3/4" Rebar & 2" Alum. Cap Lot: 40.949556°  
Long: 108.287039°

UELS A.C., 0.4' High, Steel Post Lot: 40.942250°  
Long: 108.306114°

Set Marked Stone, Pile of Stones, Steel Post Lot: 40.942372°  
Long: 108.287022°

NOTE: THE PROPOSED BOTTOM HOLE FOR THIS WELL BEARS N22°52'57"E 1084.64' FROM THE PROPOSED WELL HEAD.

BW MUSSEY #59  
Target Bottom Hole

2445'

422'

N00°00'21"W - 2662.21' (Meas.)

N00°05'44"W - 2618.14' (Meas.)