

2007 UELS Alum.
Cap
Lat: 40.935006°
Long: 108.306061°

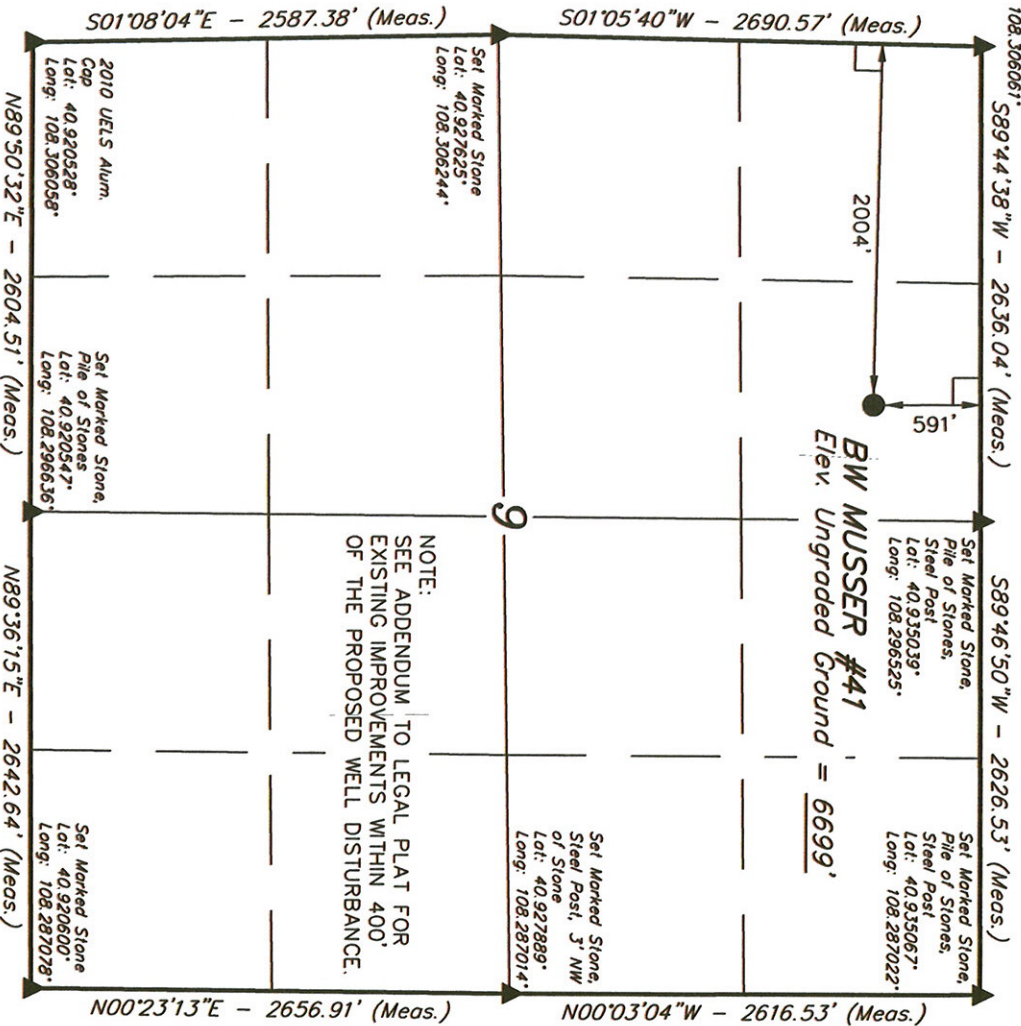
T11N, R97W, 6th P.M.

WEXPRO COMPANY

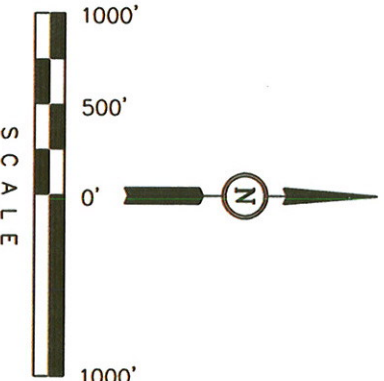
Well location, BW MUSSER #41, located as shown in the NE 1/4 NW 1/4 of Section 9, T11N, R97W, 6th P.M., Moffat County, Colorado.

BASIS OF ELEVATION

SPOT ELEVATION LOCATED AT THE SOUTHEAST CORNER OF SECTION 4, T11N, R97W, 6th P.M. TAKEN FROM THE POWDER WASH QUADRANGLE, COLORADO, MOFFAT COUNTY, 7.5 MINUTE SERIES (TOPOGRAPHICAL MAP) PUBLISHED BY THE UNITED STATES DEPARTMENT OF THE INTERIOR, GEOLOGICAL SURVEY. SAID ELEVATION IS MARKED AS BEING 6644 FEET.



NOTE:
SEE ADDENDUM TO LEGAL PLAT FOR
EXISTING IMPROVEMENTS WITHIN 400'
OF THE PROPOSED WELL DISTURBANCE.



CERTIFICATE
THIS IS TO CERTIFY THAT THE ABOVE PLAT WAS PREPARED FROM
FIELD NOTES OF ACTUAL SURVEYS MADE BY ME OR UNDER MY
SUPERVISION AND THAT THE SAME ARE TRUE AND CORRECT TO THE
BEST OF MY KNOWLEDGE AND BELIEF.

REVISED: 02-03-11

REGISTERED LAND SURVEYOR
No. 17582
STATE OF COLORADO

UNTAN ENGINEERING & LAND SURVEYING
85 SOUTH 200 EAST - VERNAL, UTAH 84078
(435) 789-1017

LEGEND:

- = 90° SYMBOL
- = PROPOSED WELL HEAD.
- ▲ = SECTION CORNERS LOCATED.

BASIS OF BEARINGS IS A G.P.S. OBSERVATION.

BASIS OF BEARINGS

PDOP = 1.1

NAD 83 (SURFACE LOCATION)
LATITUDE = 40°56'00.27" (40.933408)
LONGITUDE = 108°17'55.86" (108.298850)
NAD 27 (SURFACE LOCATION)
LATITUDE = 40°56'00.40" (40.933444)
LONGITUDE = 108°17'53.52" (108.298200)

SCALE	DATE SURVEYED:	DATE DRAWN:
1" = 1000'	08-30-10	09-13-10
PARTY	REFERENCES	
D.K. B.H. S.L.	G.L.O. PLAT	
WEATHER	FILE	
WARM	WEXPRO COMPANY	