

2007 UELS Alum.  
Cap  
Lot: 40.935006'  
Long: 108.306061'

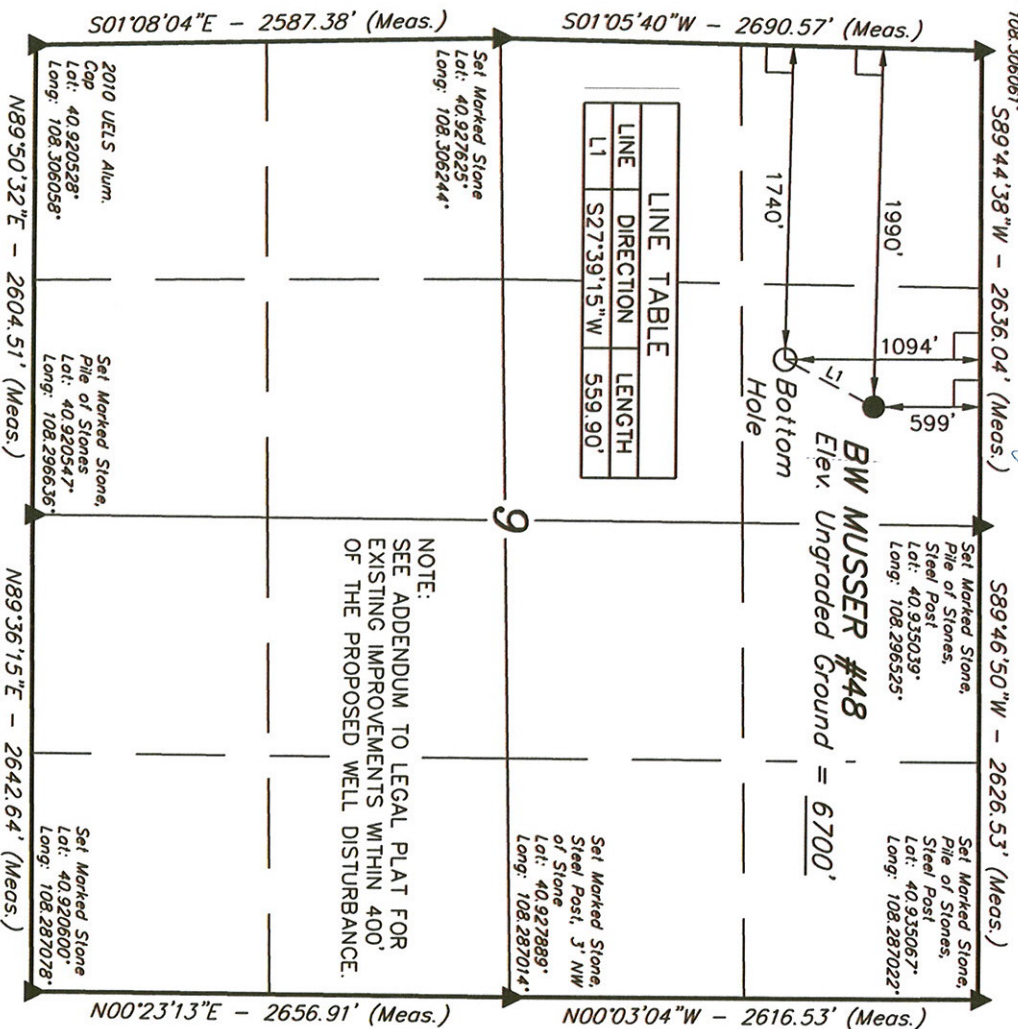
T11N, R97W, 6th P.M.

WEXPRO COMPANY

Well location, BW MUSSER #48, located as shown in the NE 1/4 NW 1/4 of Section 9, T11N, R97W, 6th P.M., Moffat County, Colorado.

### BASIS OF ELEVATION

SPOT ELEVATION LOCATED AT THE SOUTHEAST CORNER OF SECTION 4, T11N, R97W, 6th P.M. TAKEN FROM THE POWDER WASH QUADRANGLE, COLORADO, MOFFAT COUNTY, 7.5 MINUTE SERIES (TOPOGRAPHICAL MAP) PUBLISHED BY THE UNITED STATES DEPARTMENT OF THE INTERIOR, GEOLOGICAL SURVEY. SAID ELEVATION IS MARKED AS BEING 6644 FEET.



NOTE:  
SEE ADDENDUM TO LEGAL PLAT FOR  
EXISTING IMPROVEMENTS WITHIN 400'  
OF THE PROPOSED WELL DISTURBANCE.

### LEGEND:

- = 90° SYMBOL
- = PROPOSED WELL HEAD.
- ▲ = SECTION CORNERS LOCATED.

### BASIS OF BEARINGS

BASIS OF BEARINGS IS A G.P.S. OBSERVATION.

PDOP = 1.1

NAD 83 (TARGET BOTTOM HOLE)	NAD 83 (SURFACE LOCATION)
LATITUDE = 40°55'55.30" (40.932028)	LATITUDE = 40°56'00.20" (40.933389)
LONGITUDE = 108°17'59.42" (108.299839)	LONGITUDE = 108°17'56.04" (108.298900)
NAD 27 (TARGET BOTTOM HOLE)	NAD 27 (SURFACE LOCATION)
LATITUDE = 40°55'55.43" (40.932064)	LATITUDE = 40°56'00.33" (40.933425)
LONGITUDE = 108°17'57.08" (108.299189)	LONGITUDE = 108°17'53.70" (108.298250)

THIS IS TO CERTIFY THAT THE ABOVE PLAT WAS PREPARED FROM  
FIELD NOTES OF ACTUAL SURVEYS MADE BY ME OR UNDER MY  
SUPERVISION AND THAT THE SAME ARE TRUE AND CORRECT TO THE  
BEST OF MY KNOWLEDGE AND BELIEF.

### CERTIFICATE

REVISED: 02-03-11

REGISTERED LAND SURVEYOR  
REGISTRATION NO. 417493  
STATE OF COLORADO

UNTAH ENGINEERING & LAND SURVEYING  
85 SOUTH 200 EAST - VERNAL, UTAH 84078  
(435) 789-1017

SCALE	DATE SURVEYED:	DATE DRAWN:
1" = 1000'	08-30-10	09-13-10
PARTY	REFERENCES	FILE
D.K. B.H. S.L.	G.L.O. PLAT	WEXPRO COMPANY
WEATHER		
WARM		