

T11N, R97W, 6th P.M.

2007 UELS Alum.
Cap: 40.935006°
Lat: 108.306061°
Long: 108.306061°

S89°44'38"W - 2636.04' (Meas.)

S89°46'50"W - 2626.53' (Meas.)

Well location, BW MUSSEY #58, located as shown in the NE 1/4 NW 1/4 of Section 9, T11N, R97W, 6th P.M., Moffat County, Colorado.

BASIS OF ELEVATION

SPOT ELEVATION LOCATED AT THE SOUTHEAST CORNER OF SECTION 4, T11N, R97W, 6th P.M. TAKEN FROM THE POWDER WASH QUADRANGLE, COLORADO, MOFFAT COUNTY, 7.5 MINUTE SERIES (TOPOGRAPHICAL MAP) PUBLISHED BY THE UNITED STATES DEPARTMENT OF THE INTERIOR, GEOLOGICAL SURVEY. SAID ELEVATION IS MARKED AS BEING 6644 FEET.

NOTE:
THE PROPOSED BOTTOM HOLE FOR THIS WELL IS LOCATED IN THE SW 1/4 SW 1/4 OF SECTION 4, T11N, R97W, 6th P.M. AT A DISTANCE OF 356' FSL 1292' F.W.L. IT BEARS N37°27'01"W 1179.19' FROM THE PROPOSED WELL HEAD.

Set Marked Stone,
Steel Post, 3' NW
of Stone
Lot: 40.927889°
Long: 108.287014°

Set Marked Stone,
Steel Post
Lot: 40.935039°
Long: 108.296525°

Set Marked Stone,
Steel Post
Lot: 40.935039°
Long: 108.296525°

Set Marked Stone
Lot: 40.927825°
Long: 108.306244°

2010 UELS Alum.
Cap: 40.920528°
Lat: 40.920547°
Long: 108.306058°

Set Marked Stone,
Pile of Stones
Lot: 40.920547°
Long: 108.296636°

Set Marked Stone
Lot: 40.920600°
Long: 108.287078°

N00°03'04"W - 2616.53' (Meas.)

N00°23'13"E - 2656.91' (Meas.)

N89°36'15"E - 2642.64' (Meas.)

N89°50'32"E - 2604.51' (Meas.)

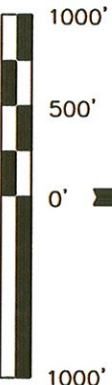
S01°05'40"W - 2690.57' (Meas.)

S01°08'04"E - 2587.38' (Meas.)

NOTE:
SEE ADDENDUM TO LEGAL PLAT FOR EXISTING IMPROVEMENTS WITHIN 400' OF THE PROPOSED WELL DISTURBANCE.

BW MUSSEY #58
Elev. Ungraded Ground = 6700'

SCALE



CERTIFICATE

THIS IS TO CERTIFY THAT THE ABOVE PLAT WAS PREPARED FROM FIELD NOTES OF ACTUAL SURVEYS MADE BY ME AND UNDER MY SUPERVISION AND THAT THE SAME ARE TRUE AND CORRECT TO THE BEST OF MY KNOWLEDGE AND BELIEF.

REGISTERED LAND SURVEYOR
REGISTRATION NO. 47158
STATE OF COLORADO

REVISED: 02-03-11

UNTAH ENGINEERING & LAND SURVEYING
85 SOUTH 200 EAST - VERNAL, UTAH 84078
(435) 789-1017

LEGEND:

— = 90° SYMBOL

● = PROPOSED WELL HEAD.

▲ = SECTION CORNERS LOCATED.

BASIS OF BEARINGS

BASIS OF BEARINGS IS A G.P.S. OBSERVATION.

PDOP = 1.1

NAD 83 (SURFACE LOCATION)
LATITUDE = 40°56'00.35" (40.933431)
LONGITUDE = 108°17'55.68" (108.298800)
NAD 27 (SURFACE LOCATION)
LATITUDE = 40°56'00.48" (40.933467)
LONGITUDE = 108°17'53.34" (108.298150)

SCALE	1" = 1000'	DATE SURVEYED:	08-30-10	DATE DRAWN:	09-13-10
PARTY	D.K. B.H. S.L.	REFERENCES	G.L.O. PLAT	FILE	WEXPRO COMPANY
WEATHER	WARM				

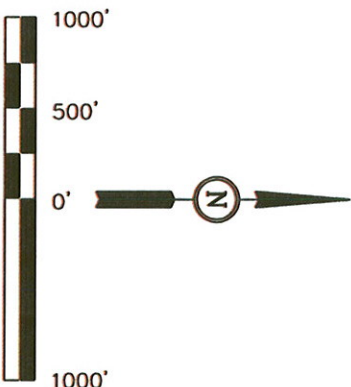
T11N, R97W, 6th P.M.

WEXPRO COMPANY

Well location, (Target Bottom Hole) BW MUSSER #58, located as shown in the SW 1/4 SW 1/4 of Section 4, T11N, R97W, 6th P.M., Moffat County, Colorado.

BASIS OF ELEVATION

SPOT ELEVATION LOCATED AT THE SOUTHEAST CORNER OF SECTION 4, T11N, R97W, 6th P.M. TAKEN FROM THE POWDER WASH QUADRANGLE, COLORADO, MOFFAT COUNTY, 7.5 MINUTE SERIES (TOPOGRAPHICAL MAP) PUBLISHED BY THE UNITED STATES DEPARTMENT OF THE INTERIOR, GEOLOGICAL SURVEY. SAID ELEVATION IS MARKED AS BEING 6644 FEET.



CERTIFICATE

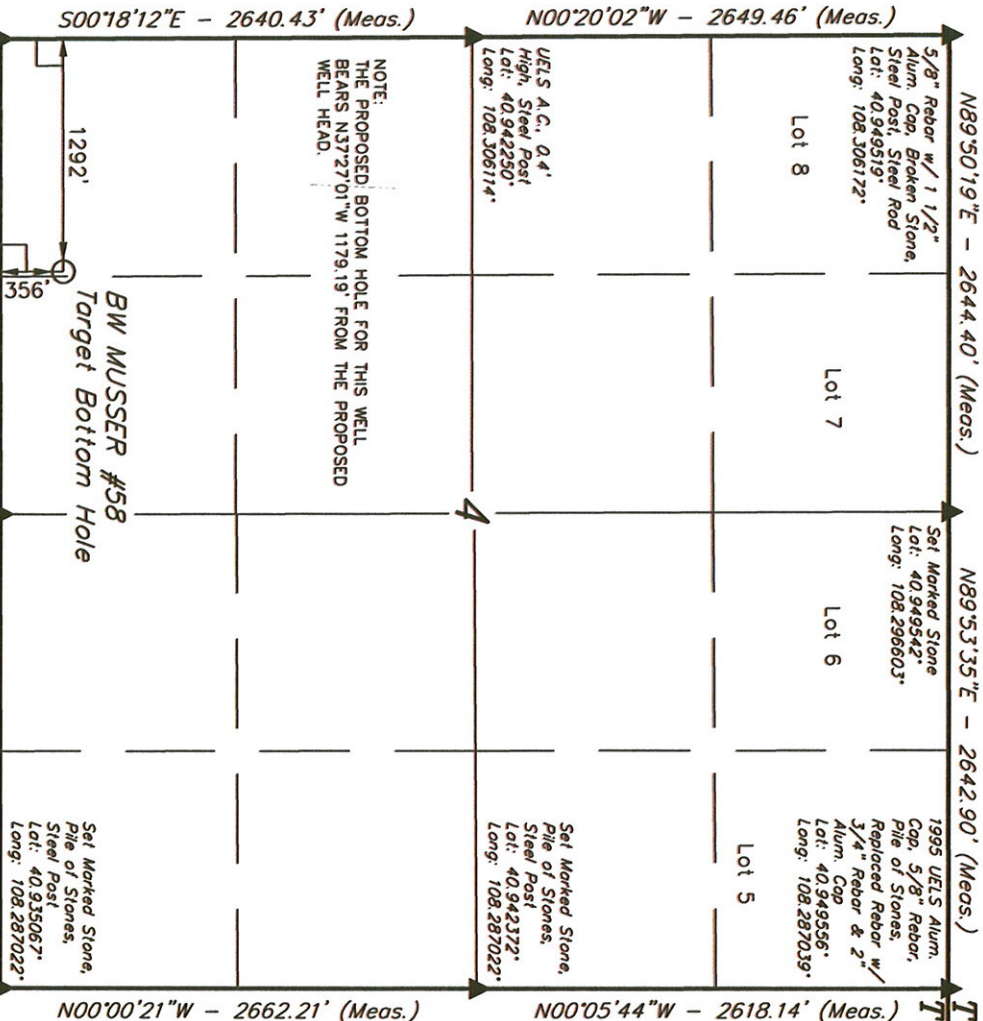
THIS IS TO CERTIFY THAT THE ABOVE PLAT WAS PREPARED FROM FIELD NOTES OF ACTUAL SURVEYS MADE BY ME OR UNDER MY SUPERVISION AND THAT THE SAME ARE TRUE AND CORRECT TO THE BEST OF MY KNOWLEDGE AND BELIEF.

REGISTERED LAND SURVEYOR
REGISTRATION NUMBER 107142
STATE OF COLORADO

REVISED: 02-03-11

UNTAH ENGINEERING & LAND SURVEYING
85 SOUTH 200 EAST - VERNAL, UTAH 84078
(435) 789-1017

SCALE 1" = 1000'	DATE SURVEYED: 08-30-10	DATE DRAWN: 09-13-10
PARTY D.K. B.H. S.L.	REFERENCES G.L.O. PLAT	FILE WEXPRO COMPANY
WEATHER WARM		



BASIS OF BEARINGS

PDOP = 1.1

PDOP = 1.1

LEGEND:

- 90° SYMBOL
- PROPOSED WELL HEAD.
- SECTION CORNERS LOCATED.