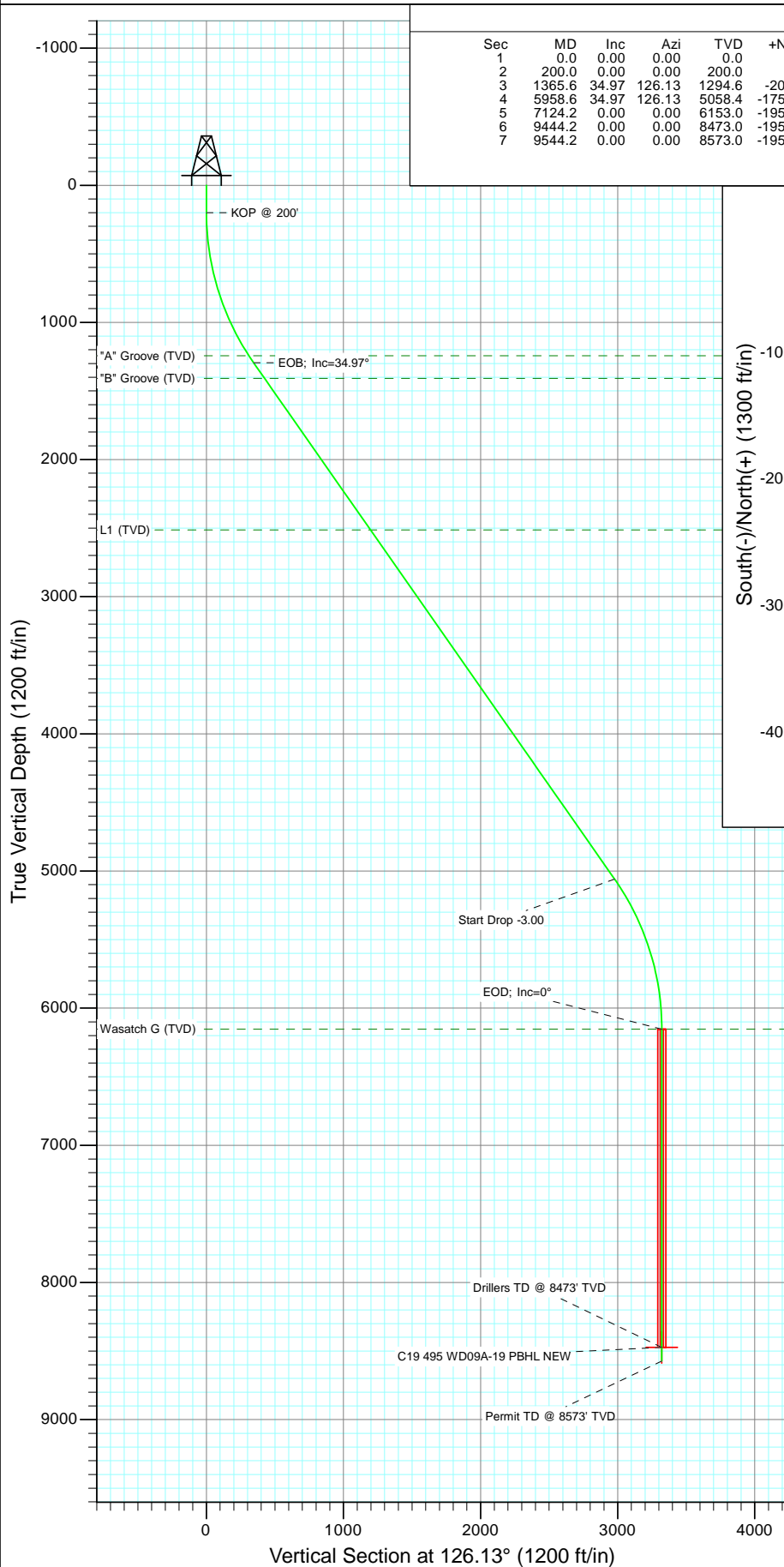


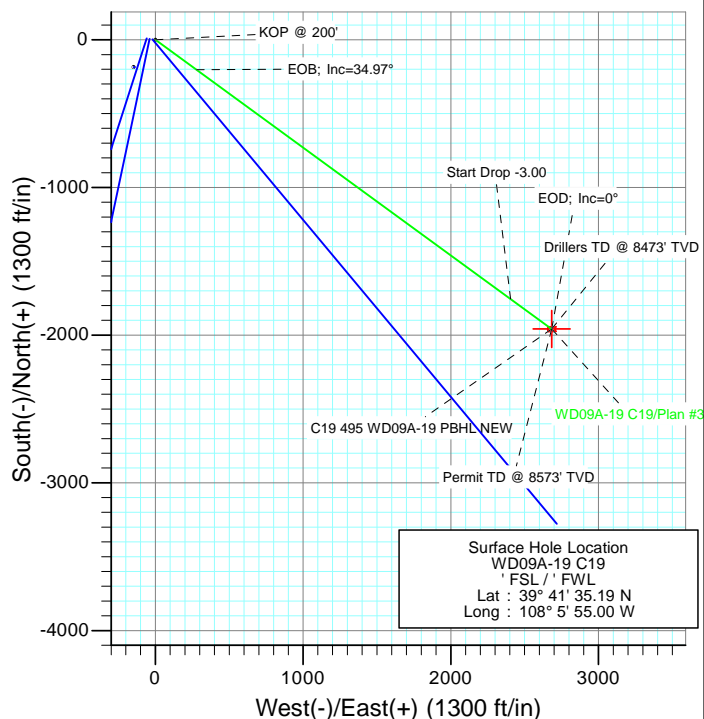


Project: Story Gulch
Site: C19 495
Well: WD09A-19 C19
Wellbore: DD
Design: Plan #3



SECTION DETAILS

Sec	MD	Inc	Azi	TVD	+N/-S	+E/-W	Dleg	TFace	VSec	Target
1	0.0	0.00	0.00	0.0	0.0	0.0	0.00	0.00	0.0	
2	200.0	0.00	0.00	200.0	0.0	0.0	0.00	0.00	0.0	
3	1365.6	34.97	126.13	1294.6	-203.3	278.5	3.00	126.13	344.8	
4	5958.6	34.97	126.13	5058.4	-1755.5	2404.5	0.00	0.00	2977.1	
5	7124.2	0.00	0.00	6153.0	-1958.8	2683.0	3.00	180.00	3321.9	
6	9444.2	0.00	0.00	8473.0	-1958.8	2683.0	0.00	0.00	3321.9	C19 495 WD09A-19 PBHL NEW
7	9544.2	0.00	0.00	8573.0	-1958.8	2683.0	0.00	0.00	3321.9	



FORMATION TOP DETAILS

TVDPath	MDPath	Formation
1243.0	1303.4	"A" Groove (TVD)
1408.0	1504.0	"B" Groove (TVD)
2513.0	2852.4	L1 (TVD)
6153.0	7124.2	Wasatch G (TVD)



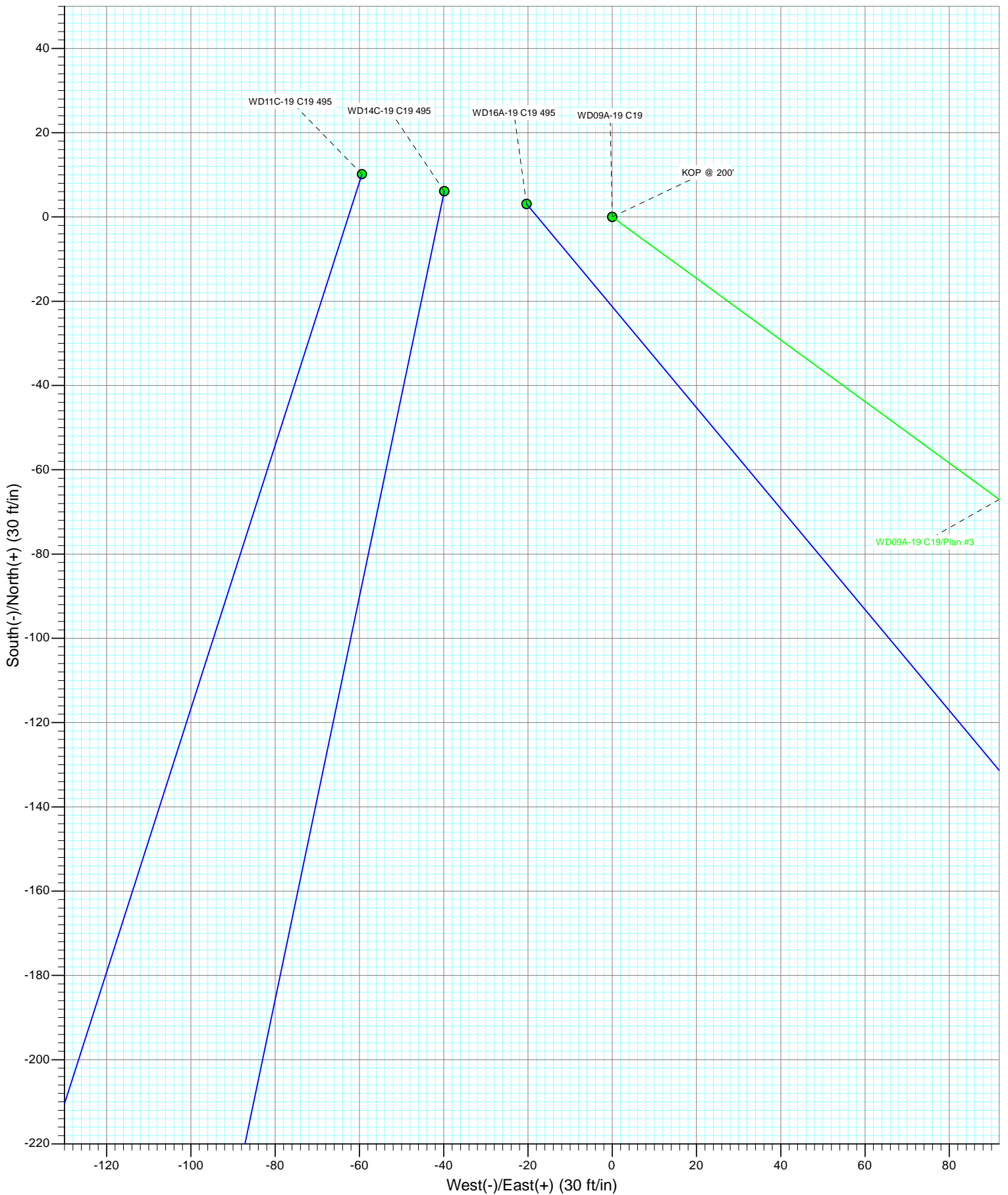
Azimuths to True North
Magnetic North: 10.42°

Magnetic Field
Strength: 52321.0snT
Dip Angle: 65.88°
Date: 7/5/2011
Model: IGRF2010

Plan #3 WD09A-19 C19 15x0x; LR KBE @ 8153.0ft (Original Well Elev) GL @ 8131.0 North American Datum 1983 Well WD09A-19 C19, True North						
Type	Target	Azimuth	Origin Type	N/S	E/W	From TVD
Target	C19 495 WD09A-19 PBHL NEW	126.13	Slot	0.0	0.0	0.0
Name	C19 495 WD09A-19 PBHL NEW	TVD 8473.0	+N/-S -1958.8	+E/-W 2683.0	Latitude 39° 41' 15.83 N	Longitude 108° 5' 20.68 W



Project: Story Gulch
Site: C19 495
Well: WD09A-19 C19
Wellbore: DD
Design: Plan #3



Planning Report

Database:	USA EDM 5000 Multi Users DB	Local Co-ordinate Reference:	Well WD09A-19 C19
Company:	EnCana Oil & Gas (USA) Inc	TVD Reference:	KBE @ 8153.0ft (Original Well Elev)
Project:	Story Gulch	MD Reference:	KBE @ 8153.0ft (Original Well Elev)
Site:	C19 495	North Reference:	True
Well:	WD09A-19 C19	Survey Calculation Method:	Minimum Curvature
Wellbore:	DD		
Design:	Plan #3		

Project	Story Gulch		
Map System:	US State Plane 1983	System Datum:	Mean Sea Level
Geo Datum:	North American Datum 1983		
Map Zone:	Colorado Central Zone		

Site	C19 495				
Site Position:		Northing:	1,687,624.39 ft	Latitude:	39° 41' 33.36 N
From:	Lat/Long	Easting:	2,268,676.50 ft	Longitude:	108° 5' 56.88 W
Position Uncertainty:	0.0 ft	Slot Radius:	13.200 in	Grid Convergence:	-1.64 °

Well	WD09A-19 C19					
Well Position	+N/-S	0.0 ft	Northing:	1,687,805.25 ft	Latitude:	39° 41' 35.19 N
	+E/-W	0.0 ft	Easting:	2,268,828.69 ft	Longitude:	108° 5' 55.00 W
Position Uncertainty		0.0 ft	Wellhead Elevation:	ft	Ground Level:	8,131.0 ft

Wellbore	DD				
Magnetics	Model Name	Sample Date	Declination (°)	Dip Angle (°)	Field Strength (nT)
	IGRF2010	7/5/2011	10.42	65.88	52,321

Design	Plan #3			
Audit Notes:				
Version:	Phase:	PLAN	Tie On Depth:	0.0
Vertical Section:	Depth From (TVD) (ft)	+N/-S (ft)	+E/-W (ft)	Direction (°)
	0.0	0.0	0.0	126.13

Plan Sections										
Measured Depth (ft)	Inclination (°)	Azimuth (°)	Vertical Depth (ft)	+N/-S (ft)	+E/-W (ft)	Dogleg Rate (°/100ft)	Build Rate (°/100ft)	Turn Rate (°/100ft)	TFO (°)	Target
0.0	0.00	0.00	0.0	0.0	0.0	0.00	0.00	0.00	0.00	
200.0	0.00	0.00	200.0	0.0	0.0	0.00	0.00	0.00	0.00	
1,365.6	34.97	126.13	1,294.6	-203.3	278.5	3.00	3.00	0.00	126.13	
5,958.6	34.97	126.13	5,058.4	-1,755.5	2,404.5	0.00	0.00	0.00	0.00	
7,124.2	0.00	0.00	6,153.0	-1,958.8	2,683.0	3.00	-3.00	0.00	180.00	
9,444.2	0.00	0.00	8,473.0	-1,958.8	2,683.0	0.00	0.00	0.00	0.00	C19 495 WD09A-19 F
9,544.2	0.00	0.00	8,573.0	-1,958.8	2,683.0	0.00	0.00	0.00	0.00	

Planning Report

Database:	USA EDM 5000 Multi Users DB	Local Co-ordinate Reference:	Well WD09A-19 C19
Company:	EnCana Oil & Gas (USA) Inc	TVD Reference:	KBE @ 8153.0ft (Original Well Elev)
Project:	Story Gulch	MD Reference:	KBE @ 8153.0ft (Original Well Elev)
Site:	C19 495	North Reference:	True
Well:	WD09A-19 C19	Survey Calculation Method:	Minimum Curvature
Wellbore:	DD		
Design:	Plan #3		

Planned Survey

Measured Depth (ft)	Inclination (°)	Azimuth (°)	Vertical Depth (ft)	+N/-S (ft)	+E/-W (ft)	Vertical Section (ft)	Dogleg Rate (°/100ft)	Build Rate (°/100ft)	Comments / Formations
0.0	0.00	0.00	0.0	0.0	0.0	0.0	0.00	0.00	
100.0	0.00	0.00	100.0	0.0	0.0	0.0	0.00	0.00	
200.0	0.00	0.00	200.0	0.0	0.0	0.0	0.00	0.00	KOP @ 200'
300.0	3.00	126.13	300.0	-1.5	2.1	2.6	3.00	3.00	
400.0	6.00	126.13	399.6	-6.2	8.5	10.5	3.00	3.00	
500.0	9.00	126.13	498.8	-13.9	19.0	23.5	3.00	3.00	
600.0	12.00	126.13	597.1	-24.6	33.7	41.7	3.00	3.00	
700.0	15.00	126.13	694.3	-38.4	52.6	65.1	3.00	3.00	
800.0	18.00	126.13	790.2	-55.1	75.5	93.5	3.00	3.00	
900.0	21.00	126.13	884.4	-74.8	102.5	126.9	3.00	3.00	
1,000.0	24.00	126.13	976.8	-97.4	133.4	165.1	3.00	3.00	
1,100.0	27.00	126.13	1,067.1	-122.7	168.1	208.2	3.00	3.00	
1,200.0	30.00	126.13	1,154.9	-150.9	206.7	255.9	3.00	3.00	
1,300.0	33.00	126.13	1,240.2	-181.7	248.9	308.1	3.00	3.00	
1,303.4	33.10	126.13	1,243.0	-182.8	250.3	309.9	3.00	3.00	"A" Groove (TVD)
1,365.6	34.97	126.13	1,294.6	-203.3	278.5	344.8	3.00	3.00	EOB; Inc=34.97°
1,400.0	34.97	126.13	1,322.8	-214.9	294.4	364.5	0.00	0.00	
1,500.0	34.97	126.13	1,404.7	-248.7	340.7	421.8	0.00	0.00	
1,504.0	34.97	126.13	1,408.0	-250.1	342.5	424.1	0.00	0.00	"B" Groove (TVD)
1,600.0	34.97	126.13	1,486.7	-282.5	387.0	479.1	0.00	0.00	
1,700.0	34.97	126.13	1,568.6	-316.3	433.3	536.4	0.00	0.00	
1,800.0	34.97	126.13	1,650.6	-350.1	479.5	593.7	0.00	0.00	
1,900.0	34.97	126.13	1,732.5	-383.9	525.8	651.1	0.00	0.00	
2,000.0	34.97	126.13	1,814.4	-417.7	572.1	708.4	0.00	0.00	
2,100.0	34.97	126.13	1,896.4	-451.5	618.4	765.7	0.00	0.00	
2,200.0	34.97	126.13	1,978.3	-485.3	664.7	823.0	0.00	0.00	
2,300.0	34.97	126.13	2,060.3	-519.1	711.0	880.3	0.00	0.00	
2,400.0	34.97	126.13	2,142.2	-552.9	757.3	937.6	0.00	0.00	
2,500.0	34.97	126.13	2,224.2	-586.7	803.6	994.9	0.00	0.00	
2,600.0	34.97	126.13	2,306.1	-620.5	849.9	1,052.2	0.00	0.00	
2,700.0	34.97	126.13	2,388.1	-654.2	896.1	1,109.6	0.00	0.00	
2,800.0	34.97	126.13	2,470.0	-688.0	942.4	1,166.9	0.00	0.00	
2,852.4	34.97	126.13	2,513.0	-705.8	966.7	1,196.9	0.00	0.00	L1 (TVD)
2,900.0	34.97	126.13	2,552.0	-721.8	988.7	1,224.2	0.00	0.00	
3,000.0	34.97	126.13	2,633.9	-755.6	1,035.0	1,281.5	0.00	0.00	
3,100.0	34.97	126.13	2,715.9	-789.4	1,081.3	1,338.8	0.00	0.00	
3,200.0	34.97	126.13	2,797.8	-823.2	1,127.6	1,396.1	0.00	0.00	
3,300.0	34.97	126.13	2,879.8	-857.0	1,173.9	1,453.4	0.00	0.00	
3,400.0	34.97	126.13	2,961.7	-890.8	1,220.2	1,510.7	0.00	0.00	
3,500.0	34.97	126.13	3,043.7	-924.6	1,266.5	1,568.1	0.00	0.00	
3,600.0	34.97	126.13	3,125.6	-958.4	1,312.7	1,625.4	0.00	0.00	
3,700.0	34.97	126.13	3,207.5	-992.2	1,359.0	1,682.7	0.00	0.00	
3,800.0	34.97	126.13	3,289.5	-1,026.0	1,405.3	1,740.0	0.00	0.00	
3,900.0	34.97	126.13	3,371.4	-1,059.8	1,451.6	1,797.3	0.00	0.00	
4,000.0	34.97	126.13	3,453.4	-1,093.6	1,497.9	1,854.6	0.00	0.00	
4,100.0	34.97	126.13	3,535.3	-1,127.4	1,544.2	1,911.9	0.00	0.00	
4,200.0	34.97	126.13	3,617.3	-1,161.2	1,590.5	1,969.2	0.00	0.00	
4,300.0	34.97	126.13	3,699.2	-1,194.9	1,636.8	2,026.5	0.00	0.00	
4,400.0	34.97	126.13	3,781.2	-1,228.7	1,683.1	2,083.9	0.00	0.00	
4,500.0	34.97	126.13	3,863.1	-1,262.5	1,729.3	2,141.2	0.00	0.00	
4,600.0	34.97	126.13	3,945.1	-1,296.3	1,775.6	2,198.5	0.00	0.00	
4,700.0	34.97	126.13	4,027.0	-1,330.1	1,821.9	2,255.8	0.00	0.00	

Planning Report

Database:	USA EDM 5000 Multi Users DB	Local Co-ordinate Reference:	Well WD09A-19 C19
Company:	EnCana Oil & Gas (USA) Inc	TVD Reference:	KBE @ 8153.0ft (Original Well Elev)
Project:	Story Gulch	MD Reference:	KBE @ 8153.0ft (Original Well Elev)
Site:	C19 495	North Reference:	True
Well:	WD09A-19 C19	Survey Calculation Method:	Minimum Curvature
Wellbore:	DD		
Design:	Plan #3		

Planned Survey									
Measured Depth (ft)	Inclination (°)	Azimuth (°)	Vertical Depth (ft)	+N/-S (ft)	+E/-W (ft)	Vertical Section (ft)	Dogleg Rate (°/100ft)	Build Rate (°/100ft)	Comments / Formations
4,800.0	34.97	126.13	4,109.0	-1,363.9	1,868.2	2,313.1	0.00	0.00	
4,900.0	34.97	126.13	4,190.9	-1,397.7	1,914.5	2,370.4	0.00	0.00	
5,000.0	34.97	126.13	4,272.9	-1,431.5	1,960.8	2,427.7	0.00	0.00	
5,100.0	34.97	126.13	4,354.8	-1,465.3	2,007.1	2,485.0	0.00	0.00	
5,200.0	34.97	126.13	4,436.8	-1,499.1	2,053.4	2,542.4	0.00	0.00	
5,300.0	34.97	126.13	4,518.7	-1,532.9	2,099.7	2,599.7	0.00	0.00	
5,400.0	34.97	126.13	4,600.7	-1,566.7	2,145.9	2,657.0	0.00	0.00	
5,500.0	34.97	126.13	4,682.6	-1,600.5	2,192.2	2,714.3	0.00	0.00	
5,600.0	34.97	126.13	4,764.5	-1,634.3	2,238.5	2,771.6	0.00	0.00	
5,700.0	34.97	126.13	4,846.5	-1,668.1	2,284.8	2,828.9	0.00	0.00	
5,800.0	34.97	126.13	4,928.4	-1,701.9	2,331.1	2,886.2	0.00	0.00	
5,900.0	34.97	126.13	5,010.4	-1,735.6	2,377.4	2,943.5	0.00	0.00	
5,958.6	34.97	126.13	5,058.4	-1,755.5	2,404.5	2,977.1	0.00	0.00	Start Drop -3.00
6,000.0	33.73	126.13	5,092.6	-1,769.2	2,423.4	3,000.5	3.00	-3.00	
6,100.0	30.73	126.13	5,177.2	-1,800.7	2,466.4	3,053.8	3.00	-3.00	
6,200.0	27.73	126.13	5,264.4	-1,829.4	2,505.9	3,102.6	3.00	-3.00	
6,300.0	24.73	126.13	5,354.1	-1,855.5	2,541.6	3,146.8	3.00	-3.00	
6,400.0	21.73	126.13	5,446.0	-1,878.8	2,573.4	3,186.2	3.00	-3.00	
6,500.0	18.73	126.13	5,539.8	-1,899.1	2,601.3	3,220.8	3.00	-3.00	
6,600.0	15.73	126.13	5,635.3	-1,916.6	2,625.2	3,250.4	3.00	-3.00	
6,700.0	12.73	126.13	5,732.3	-1,931.1	2,645.1	3,275.0	3.00	-3.00	
6,800.0	9.73	126.13	5,830.3	-1,942.6	2,660.8	3,294.5	3.00	-3.00	
6,900.0	6.73	126.13	5,929.3	-1,951.0	2,672.4	3,308.8	3.00	-3.00	
7,000.0	3.73	126.13	6,028.9	-1,956.4	2,679.7	3,317.9	3.00	-3.00	
7,100.0	0.73	126.13	6,128.8	-1,958.7	2,682.9	3,321.8	3.00	-3.00	
7,124.2	0.00	0.00	6,153.0	-1,958.8	2,683.0	3,321.9	3.00	-3.00	EOD; Inc=0° - Wasatch G (TVD)
7,200.0	0.00	0.00	6,228.8	-1,958.8	2,683.0	3,321.9	0.00	0.00	
7,300.0	0.00	0.00	6,328.8	-1,958.8	2,683.0	3,321.9	0.00	0.00	
7,400.0	0.00	0.00	6,428.8	-1,958.8	2,683.0	3,321.9	0.00	0.00	
7,500.0	0.00	0.00	6,528.8	-1,958.8	2,683.0	3,321.9	0.00	0.00	
7,600.0	0.00	0.00	6,628.8	-1,958.8	2,683.0	3,321.9	0.00	0.00	
7,700.0	0.00	0.00	6,728.8	-1,958.8	2,683.0	3,321.9	0.00	0.00	
7,800.0	0.00	0.00	6,828.8	-1,958.8	2,683.0	3,321.9	0.00	0.00	
7,900.0	0.00	0.00	6,928.8	-1,958.8	2,683.0	3,321.9	0.00	0.00	
8,000.0	0.00	0.00	7,028.8	-1,958.8	2,683.0	3,321.9	0.00	0.00	
8,100.0	0.00	0.00	7,128.8	-1,958.8	2,683.0	3,321.9	0.00	0.00	
8,200.0	0.00	0.00	7,228.8	-1,958.8	2,683.0	3,321.9	0.00	0.00	
8,300.0	0.00	0.00	7,328.8	-1,958.8	2,683.0	3,321.9	0.00	0.00	
8,400.0	0.00	0.00	7,428.8	-1,958.8	2,683.0	3,321.9	0.00	0.00	
8,500.0	0.00	0.00	7,528.8	-1,958.8	2,683.0	3,321.9	0.00	0.00	
8,600.0	0.00	0.00	7,628.8	-1,958.8	2,683.0	3,321.9	0.00	0.00	
8,700.0	0.00	0.00	7,728.8	-1,958.8	2,683.0	3,321.9	0.00	0.00	
8,800.0	0.00	0.00	7,828.8	-1,958.8	2,683.0	3,321.9	0.00	0.00	
8,900.0	0.00	0.00	7,928.8	-1,958.8	2,683.0	3,321.9	0.00	0.00	
9,000.0	0.00	0.00	8,028.8	-1,958.8	2,683.0	3,321.9	0.00	0.00	
9,100.0	0.00	0.00	8,128.8	-1,958.8	2,683.0	3,321.9	0.00	0.00	
9,200.0	0.00	0.00	8,228.8	-1,958.8	2,683.0	3,321.9	0.00	0.00	
9,300.0	0.00	0.00	8,328.8	-1,958.8	2,683.0	3,321.9	0.00	0.00	
9,400.0	0.00	0.00	8,428.8	-1,958.8	2,683.0	3,321.9	0.00	0.00	
9,444.2	0.00	0.00	8,473.0	-1,958.8	2,683.0	3,321.9	0.00	0.00	Drillers TD @ 8473' TVD - C19 495 WD09A-19
9,500.0	0.00	0.00	8,528.8	-1,958.8	2,683.0	3,321.9	0.00	0.00	
9,544.2	0.00	0.00	8,573.0	-1,958.8	2,683.0	3,321.9	0.00	0.00	Permit TD @ 8573' TVD

Planning Report

Database:	USA EDM 5000 Multi Users DB	Local Co-ordinate Reference:	Well WD09A-19 C19
Company:	EnCana Oil & Gas (USA) Inc	TVD Reference:	KBE @ 8153.0ft (Original Well Elev)
Project:	Story Gulch	MD Reference:	KBE @ 8153.0ft (Original Well Elev)
Site:	C19 495	North Reference:	True
Well:	WD09A-19 C19	Survey Calculation Method:	Minimum Curvature
Wellbore:	DD		
Design:	Plan #3		

Targets									
Target Name									
- hit/miss target	Dip Angle	Dip Dir.	TVD	+N/-S	+E/-W	Northing	Easting	Latitude	Longitude
- Shape	(°)	(°)	(ft)	(ft)	(ft)	(ft)	(ft)		
C19 495 WD09A-19 PBI	0.00	0.00	8,473.0	-1,958.8	2,683.0	1,685,770.56	2,271,454.56	39° 41' 15.83 N	108° 5' 20.68 W
- plan hits target center									
- Rectangle (sides W30.0 H50.0 D0.0)									

Formations					
Measured Depth	Vertical Depth	Name	Lithology	Dip	Dip Direction
(ft)	(ft)			(°)	(°)
1,303.4	1,243.0	"A" Groove (TVD)		0.00	
1,504.0	1,408.0	"B" Groove (TVD)		0.00	
2,852.4	2,513.0	L1 (TVD)		0.00	
7,124.2	6,153.0	Wasatch G (TVD)		0.00	

Plan Annotations				
Measured Depth	Vertical Depth	Local Coordinates		Comment
(ft)	(ft)	+N/-S (ft)	+E/-W (ft)	
200.0	200.0	0.0	0.0	KOP @ 200'
1,365.6	1,294.6	-203.3	278.5	EOB; Inc=34.97°
5,958.6	5,058.4	-1,755.5	2,404.5	Start Drop -3.00
7,124.2	6,153.0	-1,958.8	2,683.0	EOD; Inc=0°
9,444.2	8,473.0	-1,958.8	2,683.0	Drillers TD @ 8473' TVD
9,544.2	8,573.0	-1,958.8	2,683.0	Permit TD @ 8573' TVD