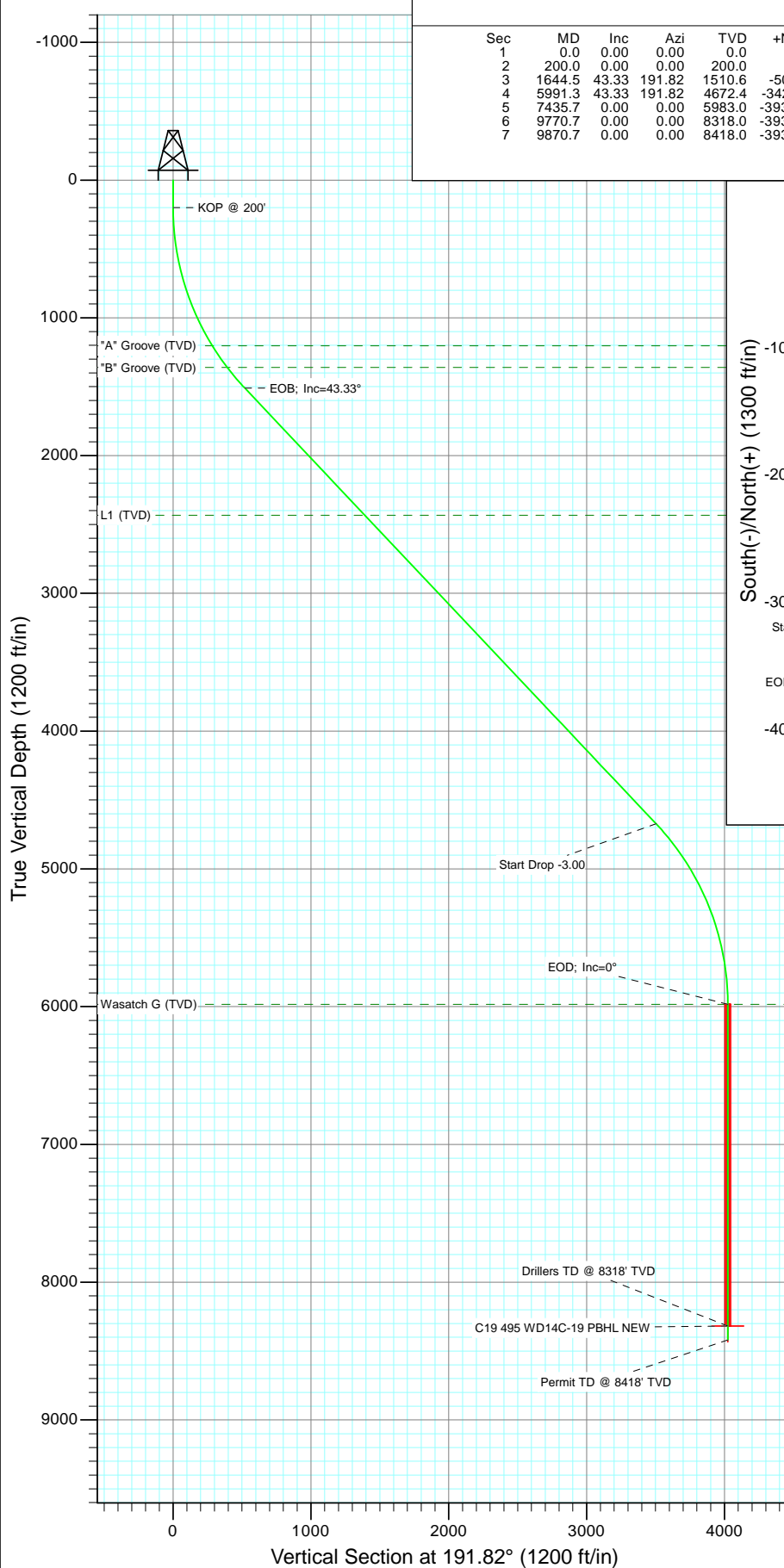


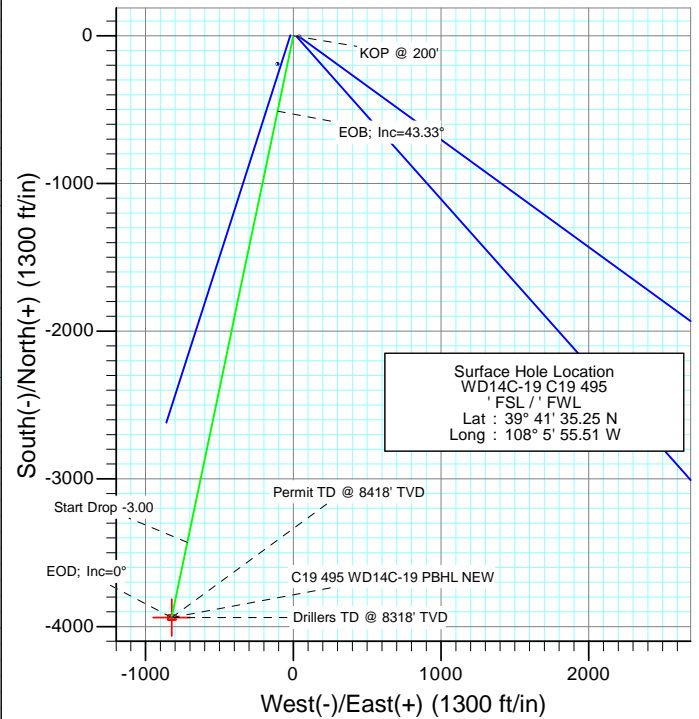


Project: Story Gulch
Site: C19 495
Well: WD14C-19 C19 495
Wellbore: DD
Design: Plan #2



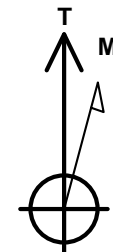
SECTION DETAILS

Sec	MD	Inc	Azi	TVD	+N/-S	+E/-W	Dleg	TFace	VFace	Target
1	0.0	0.00	0.00	0.0	0.0	0.0	0.00	0.00	0.0	
2	200.0	0.00	0.00	200.0	0.0	0.0	0.00	0.00	0.0	
3	1644.5	43.33	191.82	1510.6	-509.7	-106.6	3.00	191.82	520.7	
4	5991.3	43.33	191.82	4672.4	-3429.4	-717.4	0.00	0.00	3503.7	
5	7435.7	0.00	0.00	5983.0	-3939.1	-824.0	3.00	180.00	4024.3	
6	9770.7	0.00	0.00	8318.0	-3939.1	-824.0	0.00	0.00	4024.3	C19 495 WD14C-19 PBHL NEW
7	9870.7	0.00	0.00	8418.0	-3939.1	-824.0	0.00	0.00	4024.3	



FORMATION TOP DETAILS

TVDPath	MDPath	Formation
1203.0	1256.0	"A" Groove (TVD)
1360.0	1446.7	"B" Groove (TVD)
2433.0	2912.5	L1 (TVD)
5983.0	7435.7	Wasatch G (TVD)



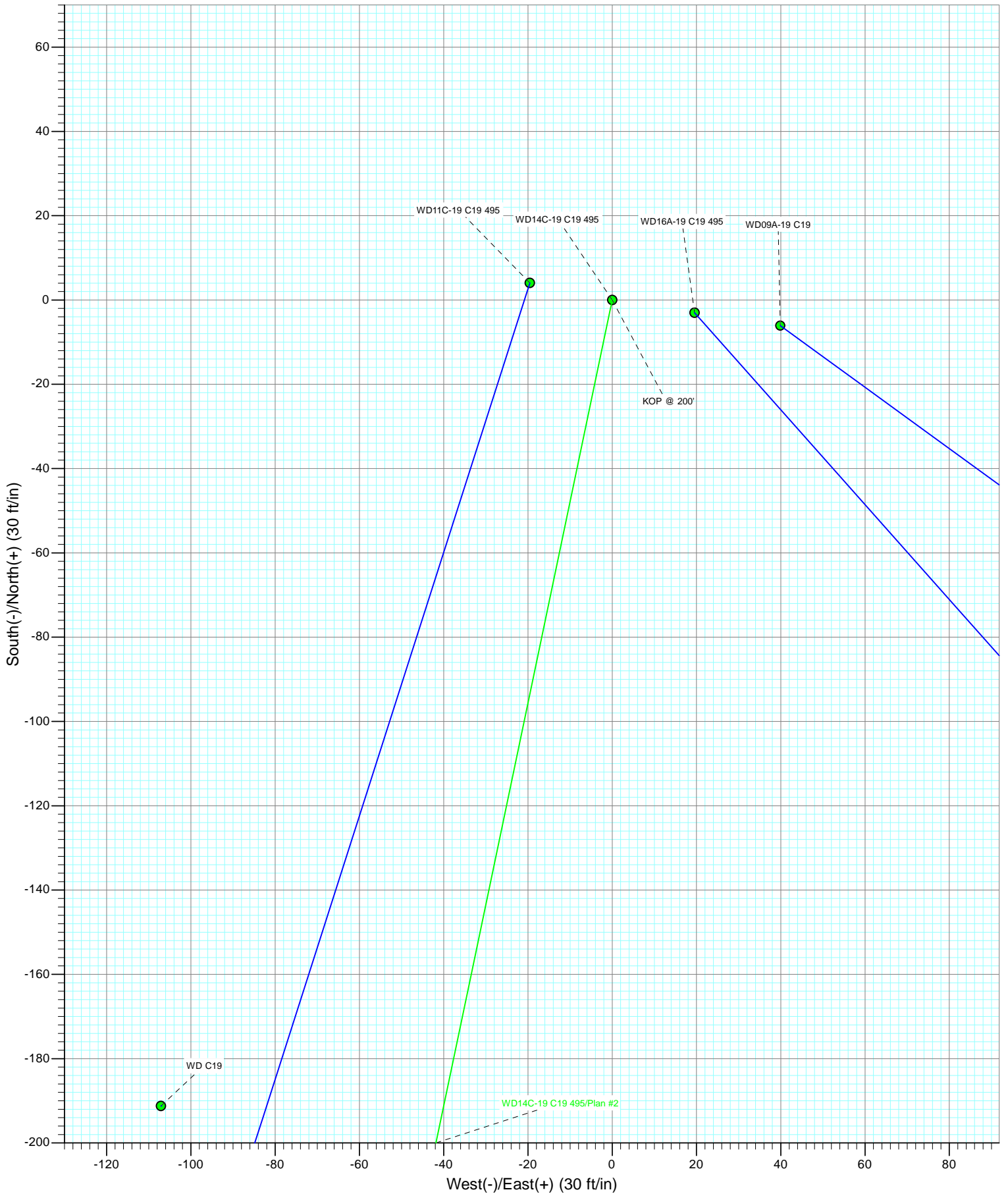
Azimuths to True North
Magnetic North: 10.42°

Magnetic Field
Strength: 52321.0nT
Dip Angle: 65.88°
Date: 7/5/2011
Model: IGRF2010

Plan #2 WD14C-19 C19 495 15x00; LR KBE @ 8153.0ft (Original Well Elev) GL @ 8131.0 North American Datum 1983 Well WD14C-19 C19 495, True North							
Type	Target	Azimuth	Origin Type	N/S	E/W	From TVD	
Target	C19 495 WD14C-19 PBHL NEW	191.82	Slot	0.0	0.0	0.0	
Name	C19 495 WD14C-19 PBHL NEW	TVD 8318.0	+N/-S -3939.1	+E/-W -824.0	Latitude 39° 40' 56.32 N	Longitude 108° 6' 6.05 W	



Project: Story Gulch
Site: C19 495
Well: WD14C-19 C19 495
Wellbore: DD
Design: Plan #2



Planning Report

Database:	USA EDM 5000 Multi Users DB	Local Co-ordinate Reference:	Well WD14C-19 C19 495
Company:	EnCana Oil & Gas (USA) Inc	TVD Reference:	KBE @ 8153.0ft (Original Well Elev)
Project:	Story Gulch	MD Reference:	KBE @ 8153.0ft (Original Well Elev)
Site:	C19 495	North Reference:	True
Well:	WD14C-19 C19 495	Survey Calculation Method:	Minimum Curvature
Wellbore:	DD		
Design:	Plan #2		

Project	Story Gulch		
Map System:	US State Plane 1983	System Datum:	Mean Sea Level
Geo Datum:	North American Datum 1983		
Map Zone:	Colorado Central Zone		

Site		C19 495			
Site Position:		Northing:	1,687,624.39 ft	Latitude:	39° 41' 33.36 N
From:	Lat/Long	Easting:	2,268,676.50 ft	Longitude:	108° 5' 56.88 W
Position Uncertainty:	0.0 ft	Slot Radius:	13.200 in	Grid Convergence:	-1.64 °

Well	WD14C-19 C19 495					
Well Position	+N/-S	0.0 ft	Northing:	1,687,812.47 ft	Latitude:	39° 41' 35.25 N
	+E/-W	0.0 ft	Easting:	2,268,789.01 ft	Longitude:	108° 5' 55.51 W
Position Uncertainty		0.0 ft	Wellhead Elevation:	ft	Ground Level:	8,131.0 ft

Wellbore	DD				
Magnetics	Model Name	Sample Date	Declination (°)	Dip Angle (°)	Field Strength (nT)
	IGRF2010	7/5/2011	10.42	65.88	52,321

Design	Plan #2				
Audit Notes:					
Version:	Phase:	PLAN		Tie On Depth:	0.0
Vertical Section:	Depth From (TVD) (ft)	+N/-S (ft)	+E/-W (ft)	Direction (°)	
	0.0	0.0	0.0	191.82	

Plan Sections										
Measured Depth (ft)	Inclination (°)	Azimuth (°)	Vertical Depth (ft)	+N/-S (ft)	+E/-W (ft)	Dogleg Rate (°/100ft)	Build Rate (°/100ft)	Turn Rate (°/100ft)	TFO (°)	Target
0.0	0.00	0.00	0.0	0.0	0.0	0.00	0.00	0.00	0.00	
200.0	0.00	0.00	200.0	0.0	0.0	0.00	0.00	0.00	0.00	
1,644.5	43.33	191.82	1,510.6	-509.7	-106.6	3.00	3.00	0.00	191.82	
5,991.3	43.33	191.82	4,672.4	-3,429.4	-717.4	0.00	0.00	0.00	0.00	
7,435.7	0.00	0.00	5,983.0	-3,939.1	-824.0	3.00	-3.00	0.00	180.00	
9,770.7	0.00	0.00	8,318.0	-3,939.1	-824.0	0.00	0.00	0.00	0.00	C19 495 WD14C-19 F
9,870.7	0.00	0.00	8,418.0	-3,939.1	-824.0	0.00	0.00	0.00	0.00	

Planning Report

Database:	USA EDM 5000 Multi Users DB	Local Co-ordinate Reference:	Well WD14C-19 C19 495
Company:	EnCana Oil & Gas (USA) Inc	TVD Reference:	KBE @ 8153.0ft (Original Well Elev)
Project:	Story Gulch	MD Reference:	KBE @ 8153.0ft (Original Well Elev)
Site:	C19 495	North Reference:	True
Well:	WD14C-19 C19 495	Survey Calculation Method:	Minimum Curvature
Wellbore:	DD		
Design:	Plan #2		

Planned Survey									
Measured Depth (ft)	Inclination (°)	Azimuth (°)	Vertical Depth (ft)	+N/-S (ft)	+E/-W (ft)	Vertical Section (ft)	Dogleg Rate (°/100ft)	Build Rate (°/100ft)	Comments / Formations
0.0	0.00	0.00	0.0	0.0	0.0	0.0	0.00	0.00	
100.0	0.00	0.00	100.0	0.0	0.0	0.0	0.00	0.00	
200.0	0.00	0.00	200.0	0.0	0.0	0.0	0.00	0.00	KOP @ 200'
300.0	3.00	191.82	300.0	-2.6	-0.5	2.6	3.00	3.00	
400.0	6.00	191.82	399.6	-10.2	-2.1	10.5	3.00	3.00	
500.0	9.00	191.82	498.8	-23.0	-4.8	23.5	3.00	3.00	
600.0	12.00	191.82	597.1	-40.9	-8.5	41.7	3.00	3.00	
700.0	15.00	191.82	694.3	-63.7	-13.3	65.1	3.00	3.00	
800.0	18.00	191.82	790.2	-91.5	-19.1	93.5	3.00	3.00	
900.0	21.00	191.82	884.4	-124.2	-26.0	126.9	3.00	3.00	
1,000.0	24.00	191.82	976.8	-161.6	-33.8	165.1	3.00	3.00	
1,100.0	27.00	191.82	1,067.1	-203.8	-42.6	208.2	3.00	3.00	
1,200.0	30.00	191.82	1,154.9	-250.5	-52.4	255.9	3.00	3.00	
1,256.0	31.68	191.82	1,203.0	-278.5	-58.3	284.6	3.00	3.00	"A" Groove (TVD)
1,300.0	33.00	191.82	1,240.2	-301.6	-63.1	308.1	3.00	3.00	
1,400.0	36.00	191.82	1,322.6	-357.0	-74.7	364.8	3.00	3.00	
1,446.7	37.40	191.82	1,360.0	-384.3	-80.4	392.6	3.00	3.00	"B" Groove (TVD)
1,500.0	39.00	191.82	1,401.9	-416.6	-87.2	425.6	3.00	3.00	
1,600.0	42.00	191.82	1,477.9	-480.2	-100.4	490.6	3.00	3.00	
1,644.5	43.33	191.82	1,510.6	-509.7	-106.6	520.7	3.00	3.00	EOB; Inc=43.33°
1,700.0	43.33	191.82	1,551.0	-547.0	-114.4	558.8	0.00	0.00	
1,800.0	43.33	191.82	1,623.8	-614.1	-128.5	627.4	0.00	0.00	
1,900.0	43.33	191.82	1,696.5	-681.3	-142.5	696.1	0.00	0.00	
2,000.0	43.33	191.82	1,769.2	-748.5	-156.6	764.7	0.00	0.00	
2,100.0	43.33	191.82	1,842.0	-815.6	-170.6	833.3	0.00	0.00	
2,200.0	43.33	191.82	1,914.7	-882.8	-184.7	901.9	0.00	0.00	
2,300.0	43.33	191.82	1,987.5	-950.0	-198.7	970.5	0.00	0.00	
2,400.0	43.33	191.82	2,060.2	-1,017.2	-212.8	1,039.2	0.00	0.00	
2,500.0	43.33	191.82	2,132.9	-1,084.3	-226.8	1,107.8	0.00	0.00	
2,600.0	43.33	191.82	2,205.7	-1,151.5	-240.9	1,176.4	0.00	0.00	
2,700.0	43.33	191.82	2,278.4	-1,218.7	-254.9	1,245.0	0.00	0.00	
2,800.0	43.33	191.82	2,351.1	-1,285.8	-269.0	1,313.7	0.00	0.00	
2,900.0	43.33	191.82	2,423.9	-1,353.0	-283.0	1,382.3	0.00	0.00	
2,912.5	43.33	191.82	2,433.0	-1,361.4	-284.8	1,390.9	0.00	0.00	L1 (TVD)
3,000.0	43.33	191.82	2,496.6	-1,420.2	-297.1	1,450.9	0.00	0.00	
3,100.0	43.33	191.82	2,569.4	-1,487.3	-311.1	1,519.5	0.00	0.00	
3,200.0	43.33	191.82	2,642.1	-1,554.5	-325.2	1,588.2	0.00	0.00	
3,300.0	43.33	191.82	2,714.8	-1,621.7	-339.2	1,656.8	0.00	0.00	
3,400.0	43.33	191.82	2,787.6	-1,688.9	-353.3	1,725.4	0.00	0.00	
3,500.0	43.33	191.82	2,860.3	-1,756.0	-367.4	1,794.0	0.00	0.00	
3,600.0	43.33	191.82	2,933.0	-1,823.2	-381.4	1,862.7	0.00	0.00	
3,700.0	43.33	191.82	3,005.8	-1,890.4	-395.5	1,931.3	0.00	0.00	
3,800.0	43.33	191.82	3,078.5	-1,957.5	-409.5	1,999.9	0.00	0.00	
3,900.0	43.33	191.82	3,151.2	-2,024.7	-423.6	2,068.5	0.00	0.00	
4,000.0	43.33	191.82	3,224.0	-2,091.9	-437.6	2,137.2	0.00	0.00	
4,100.0	43.33	191.82	3,296.7	-2,159.1	-451.7	2,205.8	0.00	0.00	
4,200.0	43.33	191.82	3,369.5	-2,226.2	-465.7	2,274.4	0.00	0.00	
4,300.0	43.33	191.82	3,442.2	-2,293.4	-479.8	2,343.0	0.00	0.00	
4,400.0	43.33	191.82	3,514.9	-2,360.6	-493.8	2,411.7	0.00	0.00	
4,500.0	43.33	191.82	3,587.7	-2,427.7	-507.9	2,480.3	0.00	0.00	
4,600.0	43.33	191.82	3,660.4	-2,494.9	-521.9	2,548.9	0.00	0.00	
4,700.0	43.33	191.82	3,733.1	-2,562.1	-536.0	2,617.5	0.00	0.00	

Planning Report

Database:	USA EDM 5000 Multi Users DB	Local Co-ordinate Reference:	Well WD14C-19 C19 495
Company:	EnCana Oil & Gas (USA) Inc	TVD Reference:	KBE @ 8153.0ft (Original Well Elev)
Project:	Story Gulch	MD Reference:	KBE @ 8153.0ft (Original Well Elev)
Site:	C19 495	North Reference:	True
Well:	WD14C-19 C19 495	Survey Calculation Method:	Minimum Curvature
Wellbore:	DD		
Design:	Plan #2		

Planned Survey									
Measured Depth (ft)	Inclination (°)	Azimuth (°)	Vertical Depth (ft)	+N/-S (ft)	+E/-W (ft)	Vertical Section (ft)	Dogleg Rate (°/100ft)	Build Rate (°/100ft)	Comments / Formations
4,800.0	43.33	191.82	3,805.9	-2,629.2	-550.0	2,686.2	0.00	0.00	
4,900.0	43.33	191.82	3,878.6	-2,696.4	-564.1	2,754.8	0.00	0.00	
5,000.0	43.33	191.82	3,951.4	-2,763.6	-578.1	2,823.4	0.00	0.00	
5,100.0	43.33	191.82	4,024.1	-2,830.8	-592.2	2,892.0	0.00	0.00	
5,200.0	43.33	191.82	4,096.8	-2,897.9	-606.2	2,960.7	0.00	0.00	
5,300.0	43.33	191.82	4,169.6	-2,965.1	-620.3	3,029.3	0.00	0.00	
5,400.0	43.33	191.82	4,242.3	-3,032.3	-634.3	3,097.9	0.00	0.00	
5,500.0	43.33	191.82	4,315.0	-3,099.4	-648.4	3,166.5	0.00	0.00	
5,600.0	43.33	191.82	4,387.8	-3,166.6	-662.4	3,235.2	0.00	0.00	
5,700.0	43.33	191.82	4,460.5	-3,233.8	-676.5	3,303.8	0.00	0.00	
5,800.0	43.33	191.82	4,533.3	-3,301.0	-690.5	3,372.4	0.00	0.00	
5,900.0	43.33	191.82	4,606.0	-3,368.1	-704.6	3,441.0	0.00	0.00	
5,991.3	43.33	191.82	4,672.4	-3,429.4	-717.4	3,503.7	0.00	0.00	Start Drop -3.00
6,000.0	43.07	191.82	4,678.7	-3,435.3	-718.6	3,509.6	3.00	-3.00	
6,100.0	40.07	191.82	4,753.5	-3,500.2	-732.2	3,576.0	3.00	-3.00	
6,200.0	37.07	191.82	4,831.7	-3,561.2	-745.0	3,638.3	3.00	-3.00	
6,300.0	34.07	191.82	4,913.0	-3,618.2	-756.9	3,696.5	3.00	-3.00	
6,400.0	31.07	191.82	4,997.3	-3,670.9	-767.9	3,750.3	3.00	-3.00	
6,500.0	28.07	191.82	5,084.3	-3,719.2	-778.0	3,799.7	3.00	-3.00	
6,600.0	25.07	191.82	5,173.7	-3,762.9	-787.2	3,844.4	3.00	-3.00	
6,700.0	22.07	191.82	5,265.3	-3,802.1	-795.4	3,884.4	3.00	-3.00	
6,800.0	19.07	191.82	5,359.0	-3,836.5	-802.6	3,919.5	3.00	-3.00	
6,900.0	16.07	191.82	5,454.3	-3,866.0	-808.8	3,949.7	3.00	-3.00	
7,000.0	13.07	191.82	5,551.1	-3,890.6	-813.9	3,974.9	3.00	-3.00	
7,100.0	10.07	191.82	5,649.0	-3,910.3	-818.0	3,994.9	3.00	-3.00	
7,200.0	7.07	191.82	5,747.9	-3,924.9	-821.1	4,009.8	3.00	-3.00	
7,300.0	4.07	191.82	5,847.4	-3,934.4	-823.0	4,019.5	3.00	-3.00	
7,400.0	1.07	191.82	5,947.3	-3,938.7	-824.0	4,024.0	3.00	-3.00	
7,435.7	0.00	0.00	5,983.0	-3,939.1	-824.0	4,024.3	3.00	-3.00	EOD; Inc=0° - Wasatch G (TVD)
7,500.0	0.00	0.00	6,047.3	-3,939.1	-824.0	4,024.3	0.00	0.00	
7,600.0	0.00	0.00	6,147.3	-3,939.1	-824.0	4,024.3	0.00	0.00	
7,700.0	0.00	0.00	6,247.3	-3,939.1	-824.0	4,024.3	0.00	0.00	
7,800.0	0.00	0.00	6,347.3	-3,939.1	-824.0	4,024.3	0.00	0.00	
7,900.0	0.00	0.00	6,447.3	-3,939.1	-824.0	4,024.3	0.00	0.00	
8,000.0	0.00	0.00	6,547.3	-3,939.1	-824.0	4,024.3	0.00	0.00	
8,100.0	0.00	0.00	6,647.3	-3,939.1	-824.0	4,024.3	0.00	0.00	
8,200.0	0.00	0.00	6,747.3	-3,939.1	-824.0	4,024.3	0.00	0.00	
8,300.0	0.00	0.00	6,847.3	-3,939.1	-824.0	4,024.3	0.00	0.00	
8,400.0	0.00	0.00	6,947.3	-3,939.1	-824.0	4,024.3	0.00	0.00	
8,500.0	0.00	0.00	7,047.3	-3,939.1	-824.0	4,024.3	0.00	0.00	
8,600.0	0.00	0.00	7,147.3	-3,939.1	-824.0	4,024.3	0.00	0.00	
8,700.0	0.00	0.00	7,247.3	-3,939.1	-824.0	4,024.3	0.00	0.00	
8,800.0	0.00	0.00	7,347.3	-3,939.1	-824.0	4,024.3	0.00	0.00	
8,900.0	0.00	0.00	7,447.3	-3,939.1	-824.0	4,024.3	0.00	0.00	
9,000.0	0.00	0.00	7,547.3	-3,939.1	-824.0	4,024.3	0.00	0.00	
9,100.0	0.00	0.00	7,647.3	-3,939.1	-824.0	4,024.3	0.00	0.00	
9,200.0	0.00	0.00	7,747.3	-3,939.1	-824.0	4,024.3	0.00	0.00	
9,300.0	0.00	0.00	7,847.3	-3,939.1	-824.0	4,024.3	0.00	0.00	
9,400.0	0.00	0.00	7,947.3	-3,939.1	-824.0	4,024.3	0.00	0.00	
9,500.0	0.00	0.00	8,047.3	-3,939.1	-824.0	4,024.3	0.00	0.00	
9,600.0	0.00	0.00	8,147.3	-3,939.1	-824.0	4,024.3	0.00	0.00	
9,700.0	0.00	0.00	8,247.3	-3,939.1	-824.0	4,024.3	0.00	0.00	

Planning Report

Database:	USA EDM 5000 Multi Users DB	Local Co-ordinate Reference:	Well WD14C-19 C19 495
Company:	EnCana Oil & Gas (USA) Inc	TVD Reference:	KBE @ 8153.0ft (Original Well Elev)
Project:	Story Gulch	MD Reference:	KBE @ 8153.0ft (Original Well Elev)
Site:	C19 495	North Reference:	True
Well:	WD14C-19 C19 495	Survey Calculation Method:	Minimum Curvature
Wellbore:	DD		
Design:	Plan #2		

Planned Survey									
Measured Depth (ft)	Inclination (°)	Azimuth (°)	Vertical Depth (ft)	+N/-S (ft)	+E/-W (ft)	Vertical Section (ft)	Dogleg Rate (°/100ft)	Build Rate (°/100ft)	Comments / Formations
9,770.7	0.00	0.00	8,318.0	-3,939.1	-824.0	4,024.3	0.00	0.00	Drillers TD @ 8318' TVD - C19 495 WD14C-19
9,800.0	0.00	0.00	8,347.3	-3,939.1	-824.0	4,024.3	0.00	0.00	
9,870.7	0.00	0.00	8,418.0	-3,939.1	-824.0	4,024.3	0.00	0.00	Permit TD @ 8418' TVD

Targets									
Target Name									
- hit/miss target	Dip Angle (°)	Dip Dir. (°)	TVD (ft)	+N/-S (ft)	+E/-W (ft)	Northing (ft)	Easting (ft)	Latitude	Longitude
C19 495 WD14C-19 PBI	0.00	0.00	8,318.0	-3,939.1	-824.0	1,683,898.58	2,267,852.65	39° 40' 56.32 N	108° 6' 6.05 W
- plan hits target center									
- Rectangle (sides W30.0 H50.0 D0.0)									

Formations					
Measured Depth (ft)	Vertical Depth (ft)	Name	Lithology	Dip (°)	Dip Direction (°)
1,256.0	1,203.0	"A" Groove (TVD)		0.00	
1,446.7	1,360.0	"B" Groove (TVD)		0.00	
2,912.5	2,433.0	L1 (TVD)		0.00	
7,435.7	5,983.0	Wasatch G (TVD)		0.00	

Plan Annotations				
Measured Depth (ft)	Vertical Depth (ft)	Local Coordinates		Comment
		+N/-S (ft)	+E/-W (ft)	
200.0	200.0	0.0	0.0	KOP @ 200'
1,644.5	1,510.6	-509.7	-106.6	EOB; Inc=43.33°
5,991.3	4,672.4	-3,429.4	-717.4	Start Drop -3.00
7,435.7	5,983.0	-3,939.1	-824.0	EOD; Inc=0°
9,770.7	8,318.0	-3,939.1	-824.0	Drillers TD @ 8318' TVD
9,870.7	8,418.0	-3,939.1	-824.0	Permit TD @ 8418' TVD