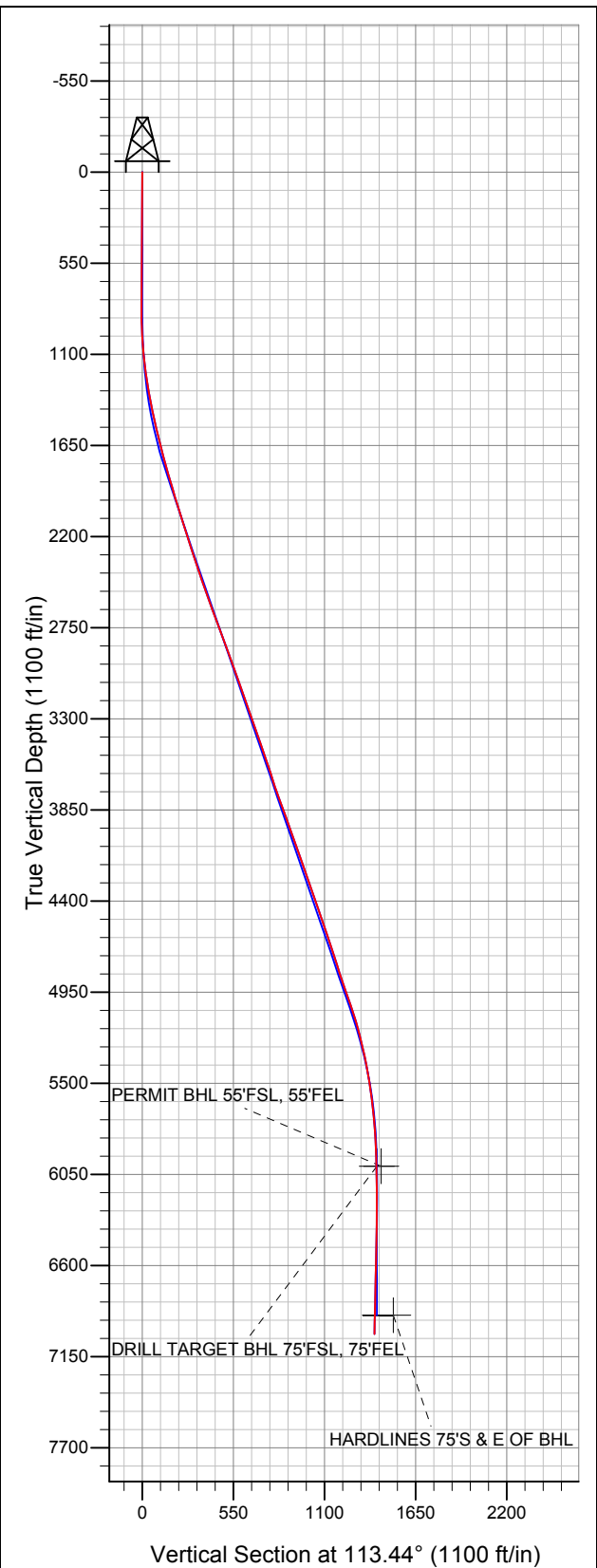




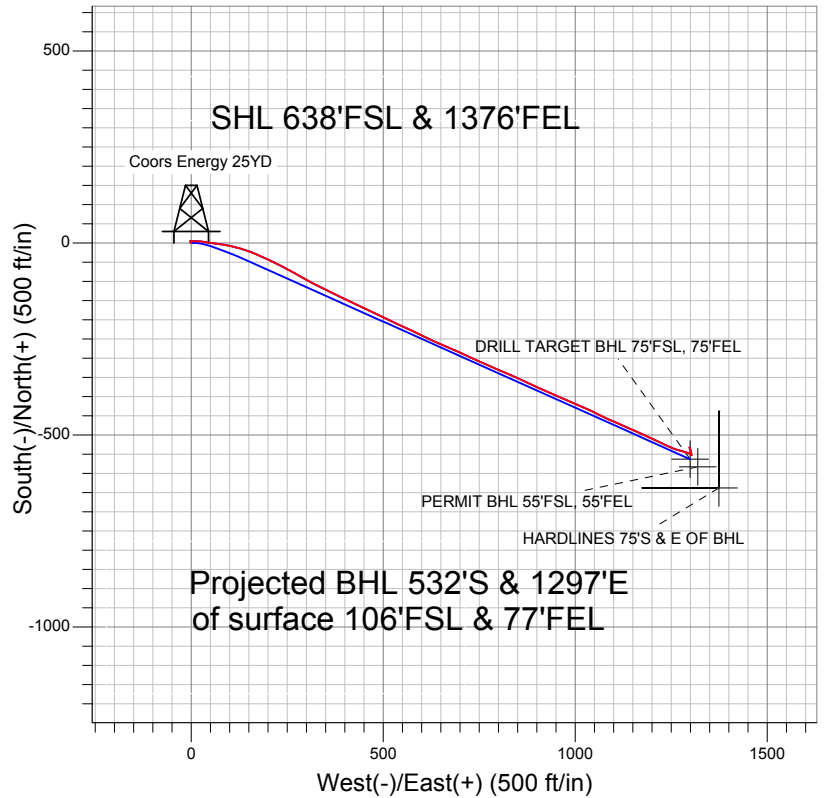
Well Name: Coors Energy 25YD

Surface Location: Coors Energy 33-25D Pad Sec.25-T3N-R64W
North American Datum 1983 US State Plane 1983Colorado Northern Zone
Ground Elevation: 4790.0

+N/-S	+E/-W	Northing	Easting	Latitude	Longitude	Slot
0.0	0.0	1313977.58	3280679.19	40° 11' 27.240 N	104° 29' 43.044 W	
Original Well Elev @ 4803.0ft (Original Well Elev)						



PETROLEUM DEVELOPMENT CORP Weld County CO



LEGEND

- △ Coors Energy 25YD, Wellbore #1, Plan #1 (6-2-10) VO
- Wellbore #1
- Survey #1

Final Survey Plot

Projected Final Survey -
7232'MD & 7013'TVD @ 1401' VS
1.2 deg Inc 340.5 deg AZ

Project: SEC.25-T3N-R64W
Site: Coors Energy 33-25D Pad Sec.25-T3N-R64W
Well: Coors Energy 25YD
Plan: Wellbore #1



PETROLEUM DEVELOPMENT CORP Weld County CO

SEC.25-T3N-R64W

Coors Energy 33-25D Pad Sec.25-T3N-R64W

Coors Energy 25YD

Wellbore #1

Survey: Survey #1

Standard Survey Report

22 August, 2011

Company:	PETROLEUM DEVELOPMENT CORP Weld County CO	Local Co-ordinate Reference:	Well Coors Energy 25YD
Project:	SEC.25-T3N-R64W	TVD Reference:	WELL @ 4803.0ft (Original Well Elev)
Site:	Coors Energy 33-25D Pad Sec.25-T3N-R64W	MD Reference:	WELL @ 4803.0ft (Original Well Elev)
Well:	Coors Energy 25YD	North Reference:	True
Wellbore:	Wellbore #1	Survey Calculation Method:	Minimum Curvature
Design:	Wellbore #1	Database:	Landmark

Project	SEC.25-T3N-R64W, Weld County, Colorado		
Map System:	US State Plane 1983	System Datum:	Mean Sea Level
Geo Datum:	North American Datum 1983		
Map Zone:	Colorado Northern Zone		Using geodetic scale factor

Site	Coors Energy 33-25D Pad Sec.25-T3N-R64W		
Site Position:		Northing:	1,314,068.69 ft
From:	Lat/Long	Easting:	3,280,680.96 ft
Position Uncertainty:	0.0 ft	Slot Radius:	"
		Latitude:	40° 11' 28.140 N
		Longitude:	104° 29' 43.008 W
		Grid Convergence:	0.65 °

Well	Coors Energy 25YD		
Well Position	+N/-S	0.0 ft	Northing:
	+E/-W	0.0 ft	Easting:
Position Uncertainty	0.0 ft	Wellhead Elevation:	ft
			Latitude:
			Longitude:
			Ground Level:

Wellbore	Wellbore #1		
Magnetics	Model Name	Sample Date	Declination (°)
	IGRF2010	6/2/2010	8.84
			Dip Angle (°)
			66.96
			Field Strength (nT)
			53,160

Design	Wellbore #1		
Audit Notes:			
Version:	1.0	Phase:	ACTUAL
		Tie On Depth:	0.0
Vertical Section:	Depth From (TVD)	+N/-S	+E/-W
	(ft)	(ft)	(ft)
	0.0	0.0	0.0
			Direction (°)
			113.44

Survey Program	Date 8/22/2011		
From (ft)	To (ft)	Survey (Wellbore)	Tool Name
801.0	7,232.0	Survey #1 (Wellbore #1)	MWD
			Description
			MWD - Standard

Survey									
Measured Depth (ft)	Inclination (°)	Azimuth (°)	Vertical Depth (ft)	+N/-S (ft)	+E/-W (ft)	Vertical Section (ft)	Dogleg Rate (°/100ft)	Build Rate (°/100ft)	Turn Rate (°/100ft)
0.0	0.00	0.00	0.0	0.0	0.0	0.0	0.00	0.00	0.00
801.0	0.80	319.00	801.0	4.2	-3.7	-5.0	0.10	0.10	0.00
896.0	1.20	93.10	896.0	4.7	-3.1	-4.7	1.95	0.42	141.16
991.0	3.50	91.50	990.9	4.5	0.8	-1.1	2.42	2.42	-1.68
1,086.0	5.80	87.20	1,085.6	4.7	8.5	5.9	2.45	2.42	-4.53
1,181.0	7.80	95.20	1,179.9	4.3	19.7	16.3	2.32	2.11	8.42
1,276.0	9.80	98.90	1,273.8	2.5	34.1	30.3	2.19	2.11	3.89
1,371.0	10.50	97.90	1,367.3	0.1	50.7	46.5	0.76	0.74	-1.05
1,466.0	11.90	96.60	1,460.5	-2.2	69.0	64.2	1.50	1.47	-1.37
1,561.0	14.40	102.40	1,553.0	-5.9	90.2	85.1	2.97	2.63	6.11
1,656.0	14.60	102.70	1,644.9	-11.1	113.5	108.5	0.22	0.21	0.32
1,751.0	15.00	106.40	1,736.8	-17.2	136.9	132.5	1.08	0.42	3.89

Company:	PETROLEUM DEVELOPMENT CORP Weld County CO	Local Co-ordinate Reference:	Well Coors Energy 25YD
Project:	SEC.25-T3N-R64W	TVD Reference:	WELL @ 4803.0ft (Original Well Elev)
Site:	Coors Energy 33-25D Pad Sec.25-T3N-R64W	MD Reference:	WELL @ 4803.0ft (Original Well Elev)
Well:	Coors Energy 25YD	North Reference:	True
Wellbore:	Wellbore #1	Survey Calculation Method:	Minimum Curvature
Design:	Wellbore #1	Database:	Landmark

Survey									
Measured Depth (ft)	Inclination (°)	Azimuth (°)	Vertical Depth (ft)	+N/-S (ft)	+E/-W (ft)	Vertical Section (ft)	Dogleg Rate (°/100ft)	Build Rate (°/100ft)	Turn Rate (°/100ft)
1,845.0	16.00	113.80	1,827.4	-25.8	160.5	157.5	2.36	1.06	7.87
1,940.0	16.40	114.20	1,918.6	-36.6	184.7	184.0	0.44	0.42	0.42
2,035.0	17.50	114.80	2,009.5	-48.1	209.9	211.7	1.17	1.16	0.63
2,130.0	17.20	118.20	2,100.2	-60.7	235.2	240.0	1.11	-0.32	3.58
2,225.0	18.20	118.40	2,190.7	-74.4	260.6	268.7	1.05	1.05	0.21
2,320.0	18.50	119.80	2,280.8	-89.0	286.8	298.5	0.56	0.32	1.47
2,415.0	18.10	117.40	2,371.0	-103.3	313.0	328.2	0.90	-0.42	-2.53
2,510.0	18.90	117.40	2,461.1	-117.1	339.7	358.3	0.84	0.84	0.00
2,605.0	19.50	115.50	2,550.8	-131.0	367.7	389.5	0.91	0.63	-2.00
2,700.0	20.20	114.50	2,640.2	-144.7	396.9	421.7	0.82	0.74	-1.05
2,794.0	20.90	115.60	2,728.2	-158.6	426.8	454.7	0.85	0.74	1.17
2,889.0	20.20	115.30	2,817.2	-173.0	456.9	488.0	0.75	-0.74	-0.32
2,984.0	20.10	116.80	2,906.4	-187.3	486.3	520.7	0.55	-0.11	1.58
3,079.0	20.00	114.80	2,995.6	-201.5	515.6	553.3	0.73	-0.11	-2.11
3,174.0	19.40	114.50	3,085.0	-214.9	544.7	585.3	0.64	-0.63	-0.32
3,268.0	19.60	115.50	3,173.6	-228.1	573.2	616.6	0.41	0.21	1.06
3,363.0	19.20	116.00	3,263.3	-241.9	601.6	648.2	0.46	-0.42	0.53
3,458.0	19.10	114.10	3,353.0	-255.0	629.8	679.3	0.66	-0.11	-2.00
3,553.0	19.30	112.60	3,442.7	-267.4	658.5	710.6	0.56	0.21	-1.58
3,648.0	19.50	114.00	3,532.3	-279.9	687.5	742.1	0.53	0.21	1.47
3,743.0	17.50	115.40	3,622.4	-292.5	714.9	772.2	2.16	-2.11	1.47
3,837.0	18.10	114.60	3,711.9	-304.6	740.9	801.0	0.69	0.64	-0.85
3,932.0	20.50	113.10	3,801.6	-317.3	769.7	832.4	2.58	2.53	-1.58
4,027.0	20.00	113.30	3,890.7	-330.3	799.9	865.2	0.53	-0.53	0.21
4,122.0	19.50	113.70	3,980.1	-343.0	829.3	897.3	0.55	-0.53	0.42
4,217.0	19.30	115.00	4,069.7	-356.1	858.1	928.9	0.50	-0.21	1.37
4,312.0	20.30	114.40	4,159.1	-369.5	887.3	961.1	1.07	1.05	-0.63
4,407.0	18.50	114.70	4,248.7	-382.6	916.0	992.6	1.90	-1.89	0.32
4,502.0	19.00	113.40	4,338.7	-395.0	943.9	1,023.1	0.69	0.53	-1.37
4,596.0	19.40	112.90	4,427.4	-407.2	972.3	1,054.1	0.46	0.43	-0.53
4,691.0	19.00	114.10	4,517.1	-419.7	1,001.0	1,085.3	0.59	-0.42	1.26
4,786.0	18.60	113.30	4,607.1	-432.0	1,029.0	1,115.9	0.50	-0.42	-0.84
4,881.0	18.50	116.80	4,697.1	-444.7	1,056.4	1,146.1	1.18	-0.11	3.68
4,976.0	18.20	114.80	4,787.3	-457.8	1,083.3	1,176.0	0.73	-0.32	-2.11
5,071.0	17.40	113.50	4,877.8	-469.7	1,109.8	1,205.0	0.94	-0.84	-1.37
5,166.0	19.60	114.00	4,967.8	-481.8	1,137.4	1,235.2	2.32	2.32	0.53
5,261.0	19.00	113.30	5,057.5	-494.4	1,166.1	1,266.6	0.68	-0.63	-0.74
5,355.0	15.90	115.30	5,147.2	-506.0	1,191.8	1,294.7	3.36	-3.30	2.13
5,450.0	13.80	115.60	5,239.0	-516.4	1,213.8	1,319.1	2.21	-2.21	0.32
5,545.0	12.00	115.70	5,331.6	-525.6	1,232.9	1,340.3	1.89	-1.89	0.11
5,640.0	10.20	112.40	5,424.8	-533.1	1,249.6	1,358.5	2.01	-1.89	-3.47
5,735.0	8.80	107.60	5,518.5	-538.5	1,264.3	1,374.2	1.69	-1.47	-5.05
5,830.0	7.10	104.60	5,612.6	-542.2	1,276.9	1,387.2	1.84	-1.79	-3.16
5,925.0	5.40	105.30	5,707.0	-544.8	1,286.9	1,397.4	1.79	-1.79	0.74
6,020.0	3.60	109.00	5,801.7	-547.0	1,294.0	1,404.8	1.92	-1.89	3.89
6,114.0	2.50	121.60	5,895.6	-549.0	1,298.6	1,409.8	1.36	-1.17	13.40
6,209.0	1.20	146.80	5,990.5	-550.9	1,300.9	1,412.7	1.58	-1.37	26.53
6,218.6	1.15	146.36	6,000.2	-551.1	1,301.0	1,412.9	0.54	-0.53	-4.54
DRILL TARGET BHL 75'FSL, 75'FEL									
6,219.1	1.15	146.34	6,000.6	-551.1	1,301.0	1,412.9	0.54	-0.53	-4.75
PERMIT BHL 55'FSL, 55'FEL									
6,304.0	0.70	139.70	6,085.5	-552.2	1,301.8	1,414.0	0.54	-0.53	-7.82
6,399.0	0.30	80.60	6,180.5	-552.6	1,302.4	1,414.8	0.64	-0.42	-62.21

Company:	PETROLEUM DEVELOPMENT CORP Weld County CO	Local Co-ordinate Reference:	Well Coors Energy 25YD
Project:	SEC.25-T3N-R64W	TVD Reference:	WELL @ 4803.0ft (Original Well Elev)
Site:	Coors Energy 33-25D Pad Sec.25-T3N-R64W	MD Reference:	WELL @ 4803.0ft (Original Well Elev)
Well:	Coors Energy 25YD	North Reference:	True
Wellbore:	Wellbore #1	Survey Calculation Method:	Minimum Curvature
Design:	Wellbore #1	Database:	Landmark

Survey									
Measured Depth (ft)	Inclination (°)	Azimuth (°)	Vertical Depth (ft)	+N/-S (ft)	+E/-W (ft)	Vertical Section (ft)	Dogleg Rate (°/100ft)	Build Rate (°/100ft)	Turn Rate (°/100ft)
6,495.0	0.40	6.20	6,276.5	-552.2	1,302.7	1,414.9	0.45	0.10	-77.50
6,590.0	0.90	342.20	6,371.5	-551.2	1,302.5	1,414.3	0.59	0.53	-25.26
6,685.0	1.50	349.70	6,466.5	-549.3	1,302.1	1,413.1	0.65	0.63	7.89
6,780.0	2.10	348.50	6,561.4	-546.3	1,301.5	1,411.4	0.63	0.63	-1.26
6,875.0	2.50	349.80	6,656.4	-542.6	1,300.8	1,409.3	0.42	0.42	1.37
6,970.0	2.20	336.00	6,751.3	-538.9	1,299.7	1,406.8	0.67	-0.32	-14.53
7,065.0	1.80	333.50	6,846.2	-535.9	1,298.3	1,404.3	0.43	-0.42	-2.63
7,115.5	1.48	335.44	6,896.7	-534.6	1,297.7	1,403.2	0.64	-0.63	3.84
HARDLINES 75'S & E OF BHL									
7,160.0	1.20	338.00	6,941.2	-533.6	1,297.2	1,402.5	0.64	-0.63	5.76
7,232.0	1.20	340.50	7,013.2	-532.2	1,296.7	1,401.4	0.07	0.00	3.47

Checked By: _____	Approved By: _____	Date: _____
-------------------	--------------------	-------------