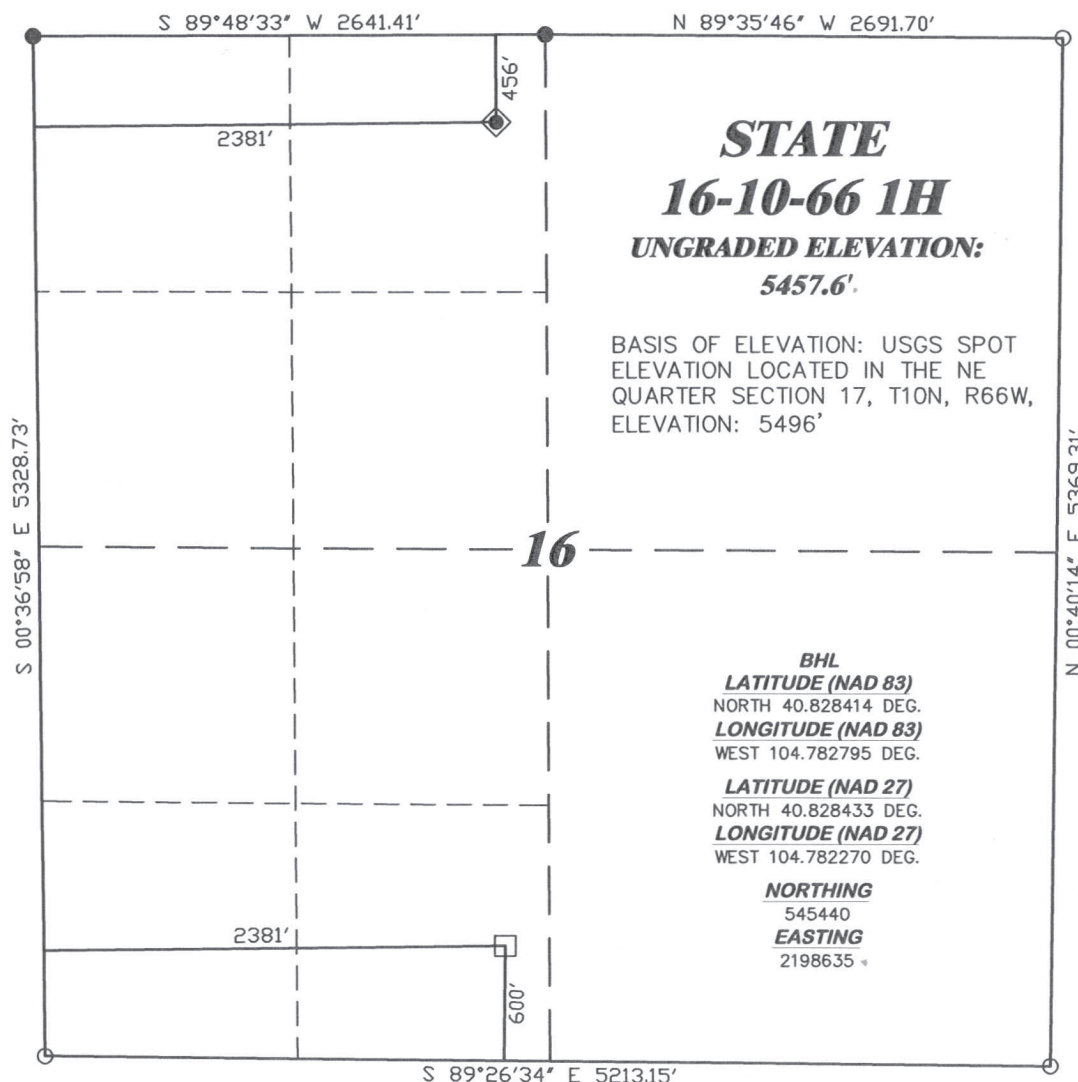


**R. 66 W.**



SCALE 1" = 1000'

**T. 10 N.**



**STATE**  
**16-10-66 1H**  
**UNGRADED ELEVATION:**  
**5457.6'**

BASIS OF ELEVATION: USGS SPOT  
ELEVATION LOCATED IN THE NE  
QUARTER SECTION 17, T10N, R66W,  
ELEVATION: 5496'

**LATITUDE (NAD 83)**  
NORTH 40.840228 DEG.  
**LONGITUDE (NAD 83)**  
WEST 104.782837 DEG.

**LATITUDE (NAD 27)**  
NORTH 40.840246 DEG.  
**LONGITUDE (NAD 27)**  
WEST 104.782313 DEG.

**NORTHING**  
549744.02  
**EASTING**  
2198588.40

**BASIS OF BEARING/DATUM**  
SPCS CO NORTH NAD 27  
BASED ON DRG CONTROL  
POINT "CP 16-10-66 NE"

**BHL**  
**LATITUDE (NAD 83)**  
NORTH 40.828414 DEG.  
**LONGITUDE (NAD 83)**  
WEST 104.782795 DEG.  
**LATITUDE (NAD 27)**  
NORTH 40.828433 DEG.  
**LONGITUDE (NAD 27)**  
WEST 104.782270 DEG.

**NORTHING**  
545440  
**EASTING**  
2198635

**NOTES**

PRAIRIE LANDS  
EXISTING POND WITHIN  
400' RADIUS OF WELL SITE.

GPS OPERATOR PAUL ORME  
OBSERVED A PDOP OF 2.0.  
ALL GPS OBSERVATIONS ARE IN  
COMPLIANCE WITH COGCC RULE No.215.



**SURVEYOR'S STATEMENT**

I, CLEMENT R. WILLIAMS, OF ROCK SPRINGS, WYOMING, HEREBY STATE: THIS MAP WAS MADE FROM NOTES TAKEN DURING AN ACTUAL FIELD SURVEY DONE UNDER MY DIRECT SUPERVISION ON APRIL 2, 2011 AND THAT THIS PLAT CORRECTLY SHOWS THE LOCATION OF STATE 16-10-66 1H AS STAKED ON THE GROUND.

**LEGEND**

- ◆ WELL LOCATION
- BOTTOM HOLE LOC. (APPROX)
- FOUND MONUMENT
- ▲ PREVIOUSLY FOUND MONUMENT
- CALCULATED CORNER



(307) 362-5028

**RIFFIN & ASSOCIATES, INC.**  
1414 ELK ST., ROCK SPRINGS, WY 82901

**DRAWN: 4/20/11 - MMM**

**REVISED: NA**

**SCALE: 1" = 1000'**

**DRG JOB No. 18537**

**EXHIBIT 1**

**PLAT OF DRILLING LOCATION**  
**FOR**  
**CHESAPEAKE ENERGY, LLC.**

**456' F/NL & 2381' F/WL, NENW, SECTION 16,**  
**T. 10 N., R. 66 W., 6th P.M.**  
**WELD COUNTY, COLORADO**