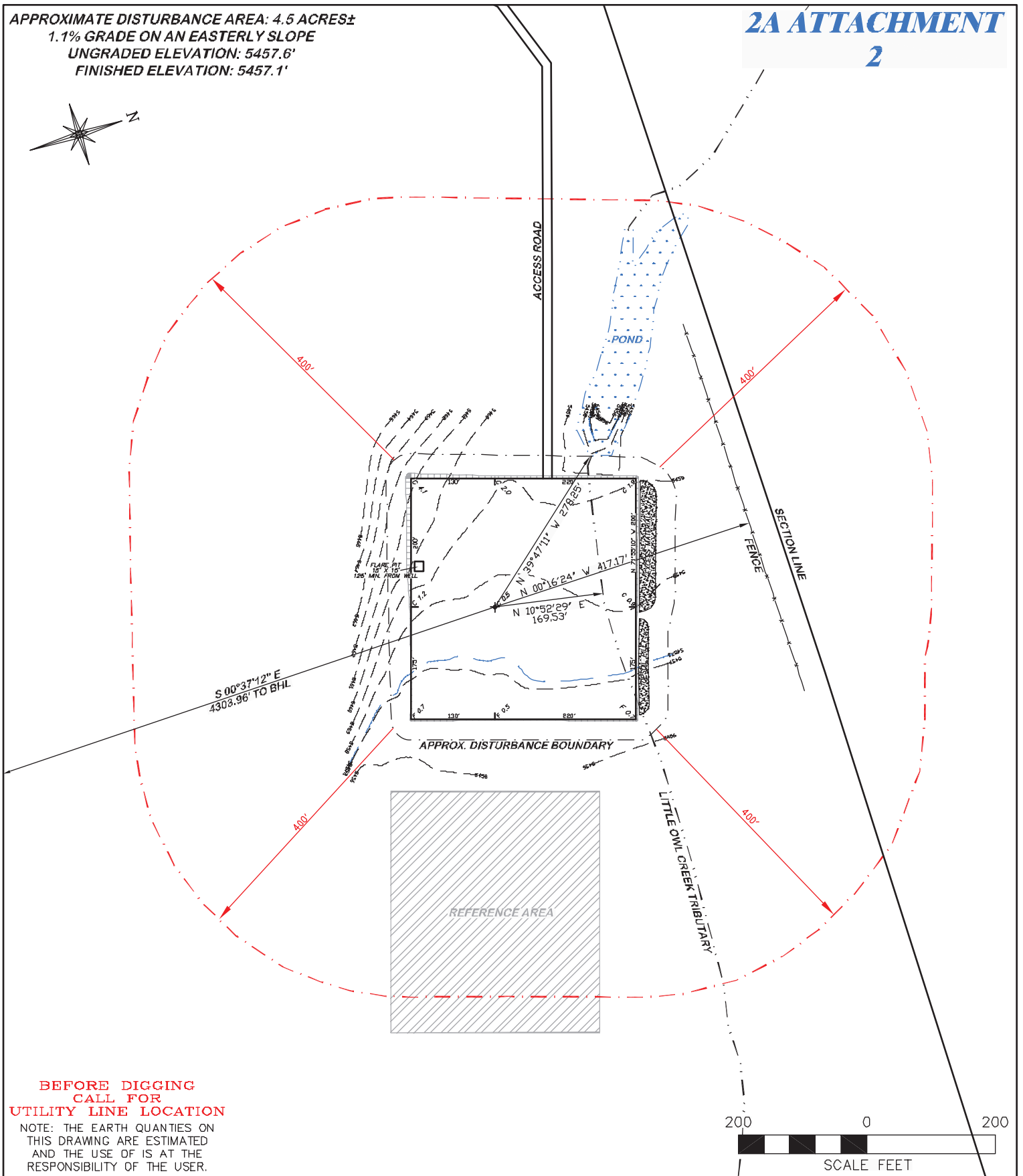


APPROXIMATE DISTURBANCE AREA: 4.5 ACRES±  
 1.1% GRADE ON AN EASTERLY SLOPE  
 UNGRADED ELEVATION: 5457.6'  
 FINISHED ELEVATION: 5457.1'

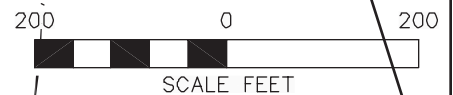
2A ATTACHMENT

2



**BEFORE DIGGING  
 CALL FOR  
 UTILITY LINE LOCATION**

NOTE: THE EARTH QUANTITIES ON  
 THIS DRAWING ARE ESTIMATED  
 AND THE USE OF IS AT THE  
 RESPONSIBILITY OF THE USER.



**RIFFIN & ASSOCIATES, INC.**  
 1414 ELK ST., ROCK SPRINGS, WY 82901

(307) 362-6028

DRAWN: 4/20/11 - MMM

REVISED: 7/25/11 - CAE

ROAD REROUTE

SCALE: 1" = 200'

DRG JOB No. 18537

EXHIBIT 2C

### LOCATION DRAWING

**CHESAPEAKE ENERGY, LLC.**  
**STATE 16-10-66 1H**  
**SECTION 16, T10N, R66W**

UNGRADED ELEVATION: 5457.6'  
 FINISHED ELEVATION: 5457.1'