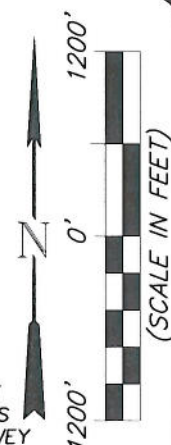


T10S, R96W, 6th P.M.

LEGEND

- ◆ SECTION CORNER LOCATED
- ⊙ SURFACE LOCATION
- BOTTOM HOLE LOCATION
- RECORD LOCATION OF CORNER



CERTIFICATE OF SURVEYOR

I, TED TAGGART OF FRUITA, COLORADO HEREBY CERTIFY THAT THIS MAP WAS MADE FROM NOTES TAKEN DURING AN ACTUAL SURVEY MADE BY ME OR UNDER MY DIRECTION FOR ENCANA OIL & GAS (USA) INC. AND THAT THIS LOCATION HAS BEEN STAKED ON THE GROUND AS SHOWN HEREON.



HITTLE CATTLE 12-12H (PL1NW) WELL
(WELLHEAD LOCATION) NAD 83
LATITUDE = 39.223699° N
LONGITUDE = 108.059555° W
(BOTTOM HOLE LOCATION) NAD 83
LATITUDE = 39.200665° N
LONGITUDE = 108.062455° W

NOTES

1. WELL FOOTAGES ARE MEASURED AT RIGHT ANGLES TO SECTION LINES.
2. BASIS OF BEARING: GEODETIC- BASED ON GPS OBSERVATIONS.
3. ELEVATIONS BASED ON GPS OBSERVATIONS, NAVD 88 (GEOID 03), POST PROCESSED USING NGS OPUS.
4. SEE ADDENDUM TO LEGAL PLAT (SHEET 1d) FOR VISIBLE IMPROVEMENTS WITHIN 400 FEET OF THE PROPOSED OIL & GAS LOCATION.
5. CONTROL FOR SURVEY WAS ESTABLISHED USING DIFFERENTIALLY CORRECTED GPS FROM AN OPUS BASED CONTROL NETWORK. WELL LOCATION WAS ESTABLISHED USING NON-GPS CONVENTIONAL METHODS, THEREFORE NO PDOP READING WAS TAKEN.

MAP to ACCOMPANY

APPLICATION for PERMIT to DRILL
Encana Oil & Gas (USA) Inc.
Hittle Cattle 12-12H (PL1NW) Well
NW1/4 NW1/4 (Lot 4), SECTION 1
T10S, R96W, 6th P.M.
MESA COUNTY, COLORADO

Location Plat

Project No. 09-04-06
Date Drawn: 9/14/11

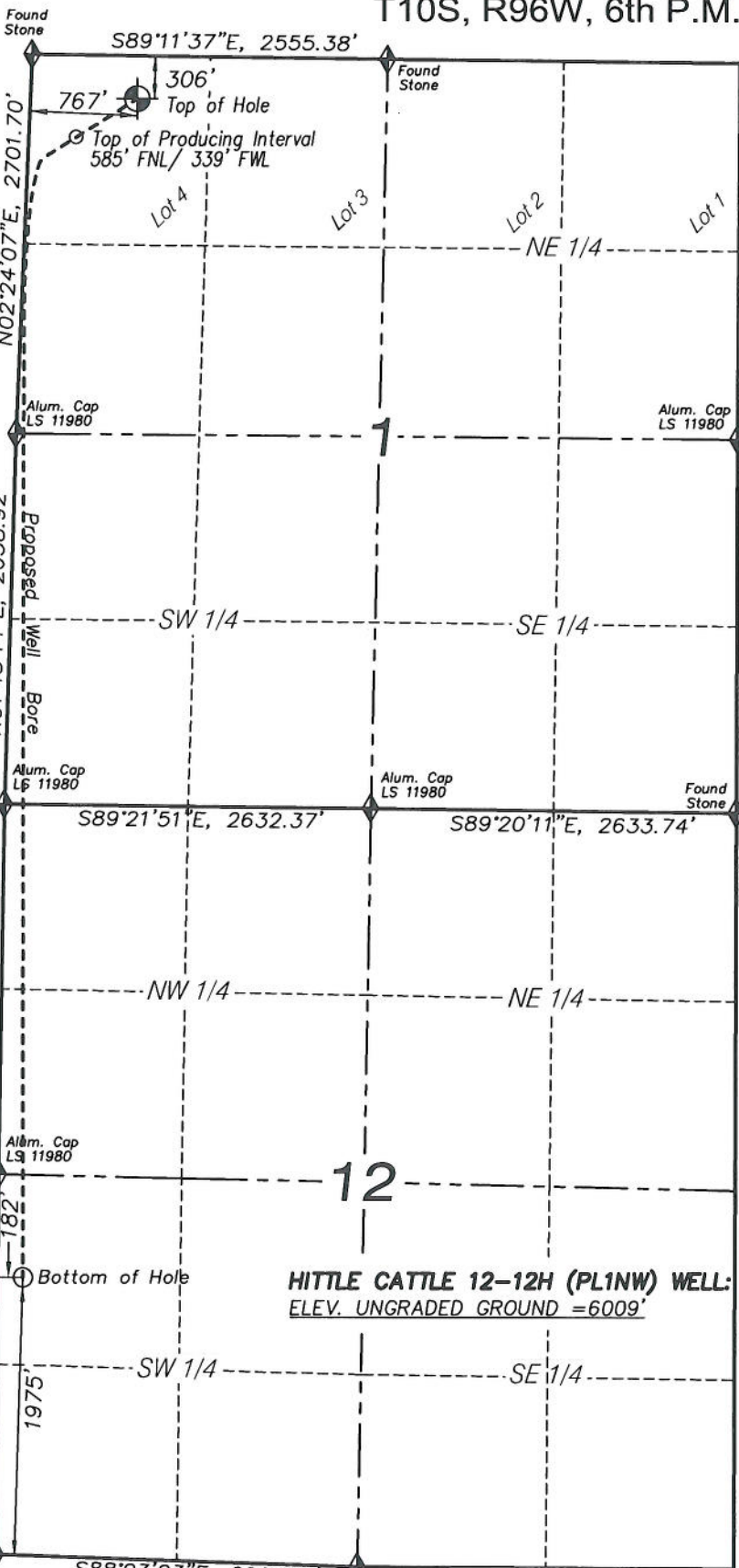
Scale: 1" = 1200'

Date Surveyed: 2/09/09
Latest Revision Date:

SHEET

1a

OF 10



906 Main Street
Evanston, Wyoming 82930
Phone No. (307) 789-4545