

# EnCana Corporation

## Planning Report - Geographic

<b>Database:</b>	EDM	<b>Local Co-ordinate Reference:</b>	Well Melbon Ranch 8-8-17
<b>Company:</b>	DJ/Paradox/WTX	<b>TVD Reference:</b>	WELL @ 4914.0ft (Original Well Elev)
<b>Project:</b>	Wattenberg	<b>MD Reference:</b>	WELL @ 4914.0ft (Original Well Elev)
<b>Site:</b>	New Drills	<b>North Reference:</b>	True
<b>Well:</b>	Melbon Ranch 8-8-17	<b>Survey Calculation Method:</b>	Minimum Curvature
<b>Wellbore:</b>	Wellbore #1		
<b>Design:</b>	Melbon Ranch 8-8-17		

<b>Project</b>	Wattenberg,		
<b>Map System:</b>	US State Plane 1983	<b>System Datum:</b>	Mean Sea Level
<b>Geo Datum:</b>	North American Datum 1983		
<b>Map Zone:</b>	Colorado Northern Zone		

Site	New Drills				
Site Position:		Northing:	1,278,589.08ft	Latitude:	40° 5' 49.848 N
From:	Lat/Long	Easting:	3,130,247.44ft	Longitude:	105° 2' 3.912 W
Position Uncertainty:	ft	Slot Radius:	in	Grid Convergence:	0.30 °

Well	Melbon Ranch 8-8-17					
Well Position	+N-S	14,241.7 ft	Northing:	1,293,747.70 ft	Latitude:	40° 8' 12.552 N
	+E-W	99,206.4 ft	Easting:	3,229,317.71 ft	Longitude:	104° 40' 47.280 W
Position Uncertainty		ft	Wellhead Elevation:	ft	Ground Level:	4,901.0 ft

<b>Wellbore</b>	Wellbore #1				
<b>Magnetics</b>	<b>Model Name</b>	<b>Sample Date</b>	<b>Declination (°)</b>	<b>Dip Angle (°)</b>	<b>Field Strength (nT)</b>
	IGRF200510	12/31/2009	8.95	66.91	53,174

<b>Design</b>	Melbon Ranch 8-8-17				
<b>Audit Notes:</b>					
<b>Version:</b>	<b>Phase:</b>	PROTOTYPE	<b>Tie On Depth:</b>	0.0	
<b>Vertical Section:</b>	<b>Depth From (TVD) (ft)</b>	<b>+N/-S (ft)</b>	<b>+E/-W (ft)</b>	<b>Direction (°)</b>	
	0.0	0.0	0.0	169.99	

<b>Plan Sections</b>										
Measured Depth (ft)	Inclination (°)	Azimuth (°)	Vertical Depth (ft)	+N/-S (ft)	+E/-W (ft)	Dogleg Rate (°/100ft)	Build Rate (°/100ft)	Turn Rate (°/100ft)	TFO (°)	Target
0.0	0.00	0.00	0.0	0.0	0.0	0.00	0.00	0.00	0.00	
900.0	0.00	0.00	900.0	0.0	0.0	0.00	0.00	0.00	0.00	
2,012.6	22.25	169.99	1,984.9	-210.1	37.1	2.00	2.00	0.00	169.99	
5,984.7	22.25	169.99	5,661.1	-1,691.4	298.5	0.00	0.00	0.00	0.00	
7,097.3	0.00	0.00	6,746.0	-1,901.5	335.5	2.00	-2.00	0.00	180.00	
8,197.3	0.00	0.00	7,846.0	-1,901.5	335.5	0.00	0.00	0.00	0.00	Melbon Ranch 8-8-

# EnCana Corporation

## Planning Report - Geographic

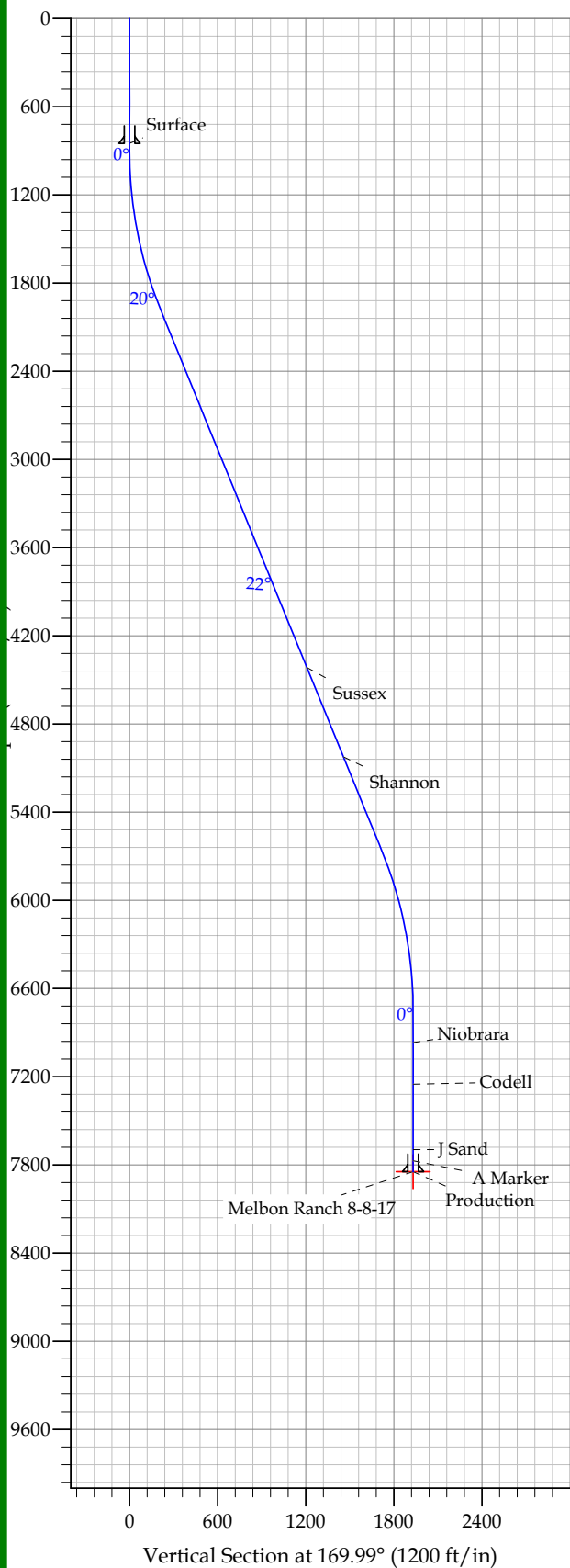
<b>Database:</b>	EDM	<b>Local Co-ordinate Reference:</b>	Well Melbon Ranch 8-8-17
<b>Company:</b>	DJ/Paradox/WTX	<b>TVD Reference:</b>	WELL @ 4914.0ft (Original Well Elev)
<b>Project:</b>	Wattenberg	<b>MD Reference:</b>	WELL @ 4914.0ft (Original Well Elev)
<b>Site:</b>	New Drills	<b>North Reference:</b>	True
<b>Well:</b>	Melbon Ranch 8-8-17	<b>Survey Calculation Method:</b>	Minimum Curvature
<b>Wellbore:</b>	Wellbore #1		
<b>Design:</b>	Melbon Ranch 8-8-17		

Planned Survey										
Measured Depth (ft)	Inclination (°)	Azimuth (°)	Vertical Depth (ft)	+N/-S (ft)	+E/-W (ft)	Map Northing (ft)	Map Easting (ft)	Latitude	Longitude	
0.0	0.00	0.00	0.0	0.0	0.0	1,293,747.70	3,229,317.71	40° 8' 12.552 N	104° 40' 47.280 W	
850.0	0.00	0.00	850.0	0.0	0.0	1,293,747.70	3,229,317.71	40° 8' 12.552 N	104° 40' 47.280 W	
Surface										
900.0	0.00	0.00	900.0	0.0	0.0	1,293,747.70	3,229,317.71	40° 8' 12.552 N	104° 40' 47.280 W	
2,012.6	22.25	169.99	1,984.9	-210.1	37.1	1,293,537.94	3,229,356.72	40° 8' 10.475 N	104° 40' 46.803 W	
4,638.3	22.25	169.99	4,415.0	-1,189.3	209.9	1,292,560.39	3,229,538.56	40° 8' 0.799 N	104° 40' 44.578 W	
Sussex										
5,296.3	22.25	169.99	5,024.0	-1,434.7	253.2	1,292,315.41	3,229,584.13	40° 7' 58.373 N	104° 40' 44.021 W	
Shannon										
5,984.7	22.25	169.99	5,661.1	-1,691.4	298.5	1,292,059.12	3,229,631.80	40° 7' 55.836 N	104° 40' 43.437 W	
7,097.3	0.00	0.00	6,746.0	-1,901.5	335.5	1,291,849.36	3,229,670.82	40° 7' 53.760 N	104° 40' 42.960 W	
7,319.3	0.00	0.00	6,968.0	-1,901.5	335.5	1,291,849.36	3,229,670.82	40° 7' 53.760 N	104° 40' 42.960 W	
Niobrara										
7,602.3	0.00	0.00	7,251.0	-1,901.5	335.5	1,291,849.36	3,229,670.82	40° 7' 53.760 N	104° 40' 42.960 W	
Codell										
8,047.3	0.00	0.00	7,696.0	-1,901.5	335.5	1,291,849.36	3,229,670.82	40° 7' 53.760 N	104° 40' 42.960 W	
J Sand										
8,123.3	0.00	0.00	7,772.0	-1,901.5	335.5	1,291,849.36	3,229,670.82	40° 7' 53.760 N	104° 40' 42.960 W	
A Marker										
8,197.3	0.00	0.00	7,846.0	-1,901.5	335.5	1,291,849.36	3,229,670.82	40° 7' 53.760 N	104° 40' 42.960 W	
Production - Melbon Ranch 8-8-17										

Design Targets										
Target Name	Dip Angle (°)	Dip Dir. (°)	TVD (ft)	+N/-S (ft)	+E/-W (ft)	Northing (ft)	Easting (ft)	Latitude	Longitude	
- hit/miss target										
- Shape										
Melbon Ranch 8-8-17	0.00	0.00	7,846.0	-1,901.5	335.5	1,291,849.36	3,229,670.82	40° 7' 53.760 N	104° 40' 42.960 W	
- plan hits target										
- Point										

Casing Points					
Measured Depth (ft)	Vertical Depth (ft)	Name	Casing Diameter (in)	Hole Diameter (in)	
850.0	850.0	Surface	8.625	12.250	
8,197.3	7,846.0	Production	4.500	7.785	

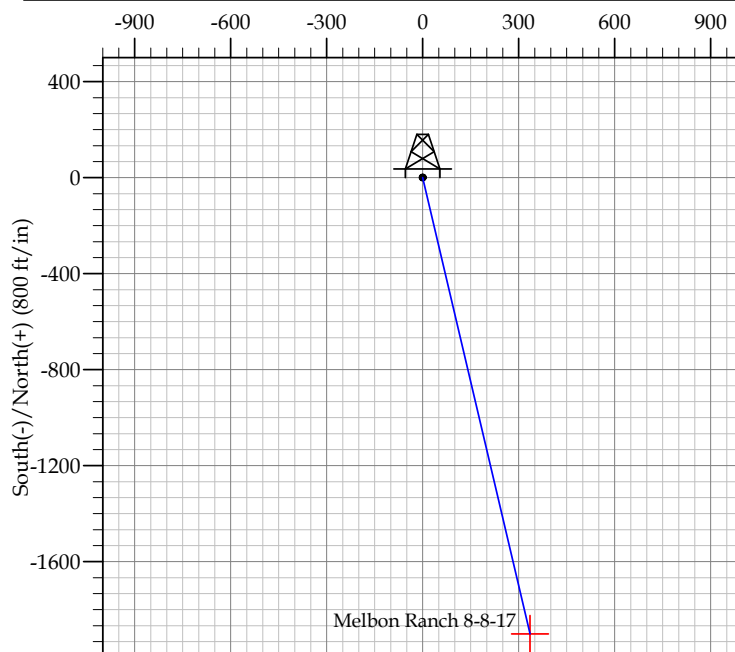
Formations						
Measured Depth (ft)	Vertical Depth (ft)	Name	Lithology	Dip (°)	Dip Direction (°)	
4,638.3	4,415.0	Sussex		0.00		
5,296.3	5,024.0	Shannon		0.00		
7,319.3	6,968.0	Niobrara		0.00		
7,602.3	7,251.0	Codell		0.00		
8,047.3	7,696.0	J Sand		0.00		
8,123.3	7,772.0	A Marker		0.00		



REFERENCE INFORMATION	
Co-ordinate (N/E) Reference:	Well Melbon Ranch 8-8-17, True North
Vertical (TVD) Reference:	WELL @ 4914.0ft (Original Well Elev)
Section (VS) Reference:	Slot - (0.0N, 0.0E)
Measured Depth Reference:	WELL @ 4914.0ft (Original Well Elev)
Calculation Method:	

WELL DETAILS: Melbon Ranch 8-8-17

				Ground Level:		4901.0					
		+N/-S	+E/-W	Northing	Easting	Latitude	Longitude	Slot			
SECTION DETAILS											
Sec	MD	Inc	Azi	TVD	+N/-S	+E/-W	DLeg	TFace	VSec	Target	
1	0.0	0.00	0.00	0.0	0.0	0.0	0.00	0.00	0.0		
2	900.0	0.00	0.00	900.0	0.0	0.0	0.00	0.00	0.0		
3	2012.6	22.25	169.99	1984.9	-210.1	37.1	2.00	169.99	213.4		
4	5984.7	22.25	169.99	5661.1	-1691.4	298.5	0.00	0.00	1717.5		
5	7097.3	0.00	0.00	6746.0	-1901.5	335.5	2.00	180.00	1930.9		
6	8197.3	0.00	0.00	7846.0	-1901.5	335.5	0.00	0.00	1930.9	Melbon Ranch 8-8-17	



### FORMATION TOP DETAILS

TVDPPath	MDPath	Formation
4415.0	4638.3	Sussex
5024.0	5296.3	Shannon
6968.0	7319.3	Niobrara
7251.0	7602.3	Codell
7696.0	8047.3	J Sand
7772.0	8123.3	A Marker

## CASING DETAILS

TVD	MD	Name	Size
850.0	850.0	Surface	8.625
7846.0	8197.3	Production	4.500