

EnCana Corporation

Planning Report - Geographic

Database:	EDM	Local Co-ordinate Reference:	Well Melbon Ranch 14-17
Company:	DJ/Paradox/WTX	TVD Reference:	WELL @ 4953.0ft (Original Well Elev)
Project:	Wattenberg	MD Reference:	WELL @ 4953.0ft (Original Well Elev)
Site:	New Drills	North Reference:	True
Well:	Melbon Ranch 14-17	Survey Calculation Method:	Minimum Curvature
Wellbore:	Wellbore #1		
Design:	Melbon Ranch 14-17		

Project	Wattenberg,		
Map System:	US State Plane 1983	System Datum:	Mean Sea Level
Geo Datum:	North American Datum 1983		
Map Zone:	Colorado Northern Zone		

Site		New Drills				
Site Position:		Northing:	1,278,589.08ft	Latitude:	40° 5' 49.848 N	
From:	Lat/Long	Easting:	3,130,247.44ft	Longitude:	105° 2' 3.912 W	
Position Uncertainty:		ft	Slot Radius:	in	Grid Convergence:	0.30 °

Well	Melbon Ranch 14-17					
Well Position	+N-S	13,797.1 ft	Northing:	1,293,255.04 ft	Latitude:	40° 8' 8.016 N
	+E-W	95,533.3 ft	Easting:	3,225,651.00 ft	Longitude:	104° 41' 34.548 W
Position Uncertainty		ft	Wellhead Elevation:	ft	Ground Level:	4,940.0 ft

Wellbore	Wellbore #1				
Magnetics	Model Name	Sample Date	Declination (°)	Dip Angle (°)	Field Strength (nT)
	IGRF200510	12/31/2009	8.96	66.91	53,172

Design	Melbon Ranch 14-17				
Audit Notes:					
Version:	Phase:	PROTOTYPE		Tie On Depth:	0.0
Vertical Section:	Depth From (TVD) (ft)	+N/-S (ft)	+E/-W (ft)	Direction (°)	
	0.0	0.0	0.0	210.40	

Plan Sections										
Measured Depth (ft)	Inclination (°)	Azimuth (°)	Vertical Depth (ft)	+N/-S (ft)	+E/-W (ft)	Dogleg Rate (°/100ft)	Build Rate (°/100ft)	Turn Rate (°/100ft)	TFO (°)	Target
0.0	0.00	0.00	0.0	0.0	0.0	0.00	0.00	0.00	0.00	
900.0	0.00	0.00	900.0	0.0	0.0	0.00	0.00	0.00	0.00	
1,514.9	12.30	210.40	1,510.1	-56.7	-33.3	2.00	2.00	0.00	210.40	
6,371.0	12.30	210.40	6,254.9	-948.7	-556.7	0.00	0.00	0.00	0.00	
6,985.8	0.00	0.00	6,865.0	-1,005.4	-590.0	2.00	-2.00	0.00	180.00	
8,035.8	0.00	0.00	7,915.0	-1,005.4	-590.0	0.00	0.00	0.00	0.00	Melbon Ranch 14-1

EnCana Corporation

Planning Report - Geographic

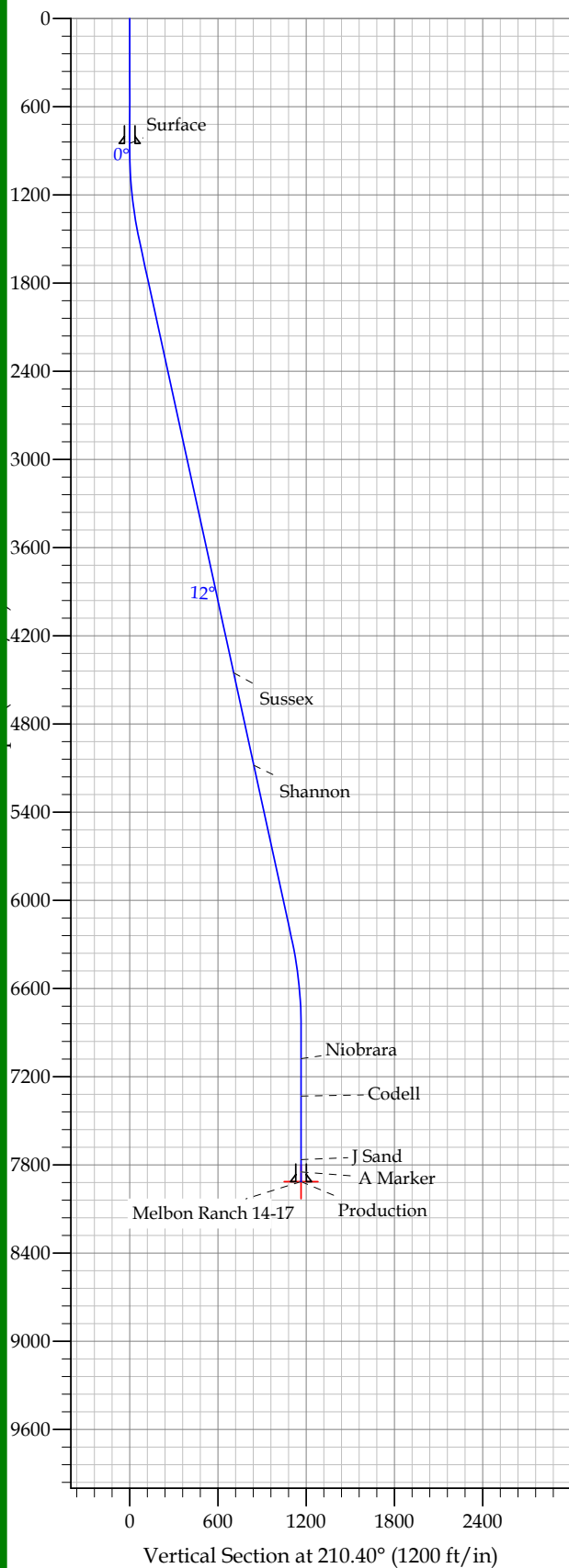
Database:	EDM	Local Co-ordinate Reference:	Well Melbon Ranch 14-17
Company:	DJ/Paradox/WTX	TVD Reference:	WELL @ 4953.0ft (Original Well Elev)
Project:	Wattenberg	MD Reference:	WELL @ 4953.0ft (Original Well Elev)
Site:	New Drills	North Reference:	True
Well:	Melbon Ranch 14-17	Survey Calculation Method:	Minimum Curvature
Wellbore:	Wellbore #1		
Design:	Melbon Ranch 14-17		

Planned Survey										
Measured Depth (ft)	Inclination (°)	Azimuth (°)	Vertical Depth (ft)	+N/-S (ft)	+E/-W (ft)	Map Northing (ft)	Map Easting (ft)	Latitude	Longitude	
0.0	0.00	0.00	0.0	0.0	0.0	1,293,255.04	3,225,651.00	40° 8' 8.016 N	104° 41' 34.548 W	
850.0	0.00	0.00	850.0	0.0	0.0	1,293,255.04	3,225,651.00	40° 8' 8.016 N	104° 41' 34.548 W	
Surface										
900.0	0.00	0.00	900.0	0.0	0.0	1,293,255.04	3,225,651.00	40° 8' 8.016 N	104° 41' 34.548 W	
1,514.9	12.30	210.40	1,510.1	-56.7	-33.3	1,293,198.05	3,225,618.25	40° 8' 7.456 N	104° 41' 34.976 W	
4,526.8	12.30	210.40	4,453.0	-610.0	-357.9	1,292,641.86	3,225,298.64	40° 8' 1.988 N	104° 41' 39.156 W	
Sussex										
5,169.6	12.30	210.40	5,081.0	-728.0	-427.2	1,292,523.17	3,225,230.44	40° 8' 0.821 N	104° 41' 40.048 W	
Shannon										
6,371.0	12.30	210.40	6,254.9	-948.7	-556.7	1,292,301.31	3,225,102.95	40° 7' 58.640 N	104° 41' 41.716 W	
6,985.8	0.00	0.00	6,865.0	-1,005.4	-590.0	1,292,244.32	3,225,070.20	40° 7' 58.080 N	104° 41' 42.144 W	
7,197.8	0.00	0.00	7,077.0	-1,005.4	-590.0	1,292,244.32	3,225,070.20	40° 7' 58.080 N	104° 41' 42.144 W	
Niobrara										
7,452.8	0.00	0.00	7,332.0	-1,005.4	-590.0	1,292,244.32	3,225,070.20	40° 7' 58.080 N	104° 41' 42.144 W	
Codell										
7,885.8	0.00	0.00	7,765.0	-1,005.4	-590.0	1,292,244.32	3,225,070.20	40° 7' 58.080 N	104° 41' 42.144 W	
J Sand										
7,968.8	0.00	0.00	7,848.0	-1,005.4	-590.0	1,292,244.32	3,225,070.20	40° 7' 58.080 N	104° 41' 42.144 W	
A Marker										
8,035.8	0.00	0.00	7,915.0	-1,005.4	-590.0	1,292,244.32	3,225,070.20	40° 7' 58.080 N	104° 41' 42.144 W	
Production - Melbon Ranch 14-17										

Design Targets										
Target Name	Dip Angle (°)	Dip Dir. (°)	TVD (ft)	+N/-S (ft)	+E/-W (ft)	Northing (ft)	Easting (ft)	Latitude	Longitude	
- hit/miss target										
- Shape										
Melbon Ranch 14-17	0.00	0.00	7,915.0	-1,005.4	-590.0	1,292,244.32	3,225,070.20	40° 7' 58.080 N	104° 41' 42.144 W	
- plan hits target										
- Point										

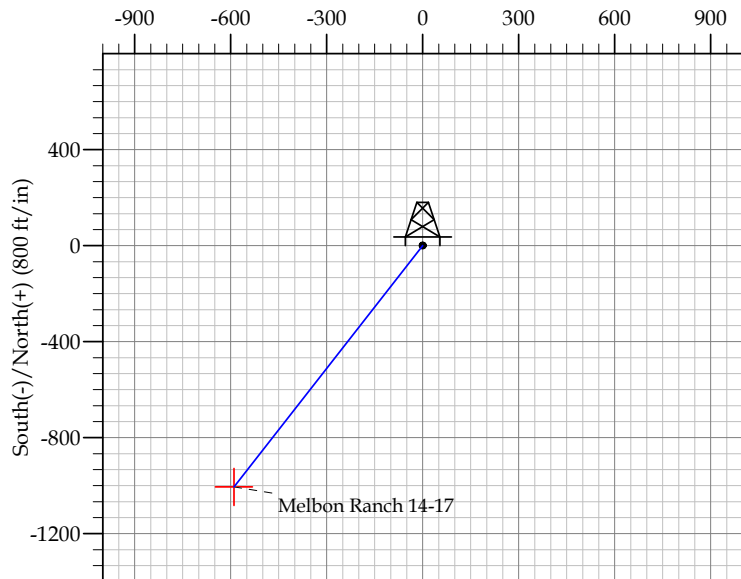
Casing Points					
Measured Depth (ft)	Vertical Depth (ft)	Name	Casing Diameter (in)	Hole Diameter (in)	
850.0	850.0	Surface	8.625	12.250	
8,035.8	7,915.0	Production	4.500	7.785	

Formations						
Measured Depth (ft)	Vertical Depth (ft)	Name	Lithology	Dip (°)	Dip Direction (°)	
4,526.8	4,453.0	Sussex		0.00		
5,169.6	5,081.0	Shannon		0.00		
7,197.8	7,077.0	Niobrara		0.00		
7,452.8	7,332.0	Codell		0.00		
7,885.8	7,765.0	J Sand		0.00		
7,968.8	7,848.0	A Marker		0.00		



REFERENCE INFORMATION	
Co-ordinate (N/E) Reference:	Well Melbon Ranch 14-17, True North
Vertical (TVD) Reference:	WELL @ 4953.0ft (Original Well Elev)
Section (VS) Reference:	Slot - (0.0N, 0.0E)
Measured Depth Reference:	WELL @ 4953.0ft (Original Well Elev)
Calculation Method:	

WELL DETAILS: Melbon Ranch 14-17										
+N-S		+E-W	Northing		Ground Level: Easting		4940.0 Latitude		Longitude	Slot
SECTION DETAILS										
Sec	MD	Inc	Azi	TVD	+N-S	+E-W	DLeg	TFace	VSec	Target
1	0.0	0.00	0.00	0.0	0.0	0.0	0.00	0.00	0.0	
2	900.0	0.00	0.00	900.0	0.0	0.0	0.00	0.00	0.0	
3	1514.9	12.30	210.40	1510.1	-56.7	-33.3	2.00	210.40	65.7	
4	6371.0	12.30	210.40	6254.9	-948.7	-556.7	0.00	0.00	1100.0	
5	6985.8	0.00	0.00	6865.0	-1005.4	-590.0	2.00	180.00	1165.7	
6	8035.8	0.00	0.00	7915.0	-1005.4	-590.0	0.00	0.00	1165.7	Melbon Ranch 14-17



FORMATION TOP DETAILS			
TVDPath	MDPath	Formation	
4453.0	4526.8	Sussex	
5081.0	5169.6	Shannon	
7077.0	7197.8	Niobrara	
7332.0	7452.8	Codell	
7765.0	7885.8	J Sand	
7848.0	7968.8	A Marker	
CASING DETAILS			
TVD	MD	Name	Size
850.0	850.0	Surface	8.625
7915.0	8035.8	Production	4.500