

# EnCana Corporation

## Planning Report - Geographic

<b>Database:</b>	EDM	<b>Local Co-ordinate Reference:</b>	Well Melbon Ranch 13-17
<b>Company:</b>	DJ/Paradox/WTX	<b>TVD Reference:</b>	WELL @ 4953.0ft (Original Well Elev)
<b>Project:</b>	Wattenberg	<b>MD Reference:</b>	WELL @ 4953.0ft (Original Well Elev)
<b>Site:</b>	New Drills	<b>North Reference:</b>	True
<b>Well:</b>	Melbon Ranch 13-17	<b>Survey Calculation Method:</b>	Minimum Curvature
<b>Wellbore:</b>	Wellbore #1		
<b>Design:</b>	Melbon Ranch 13-17		

<b>Project</b>	Wattenberg,		
<b>Map System:</b>	US State Plane 1983	<b>System Datum:</b>	Mean Sea Level
<b>Geo Datum:</b>	North American Datum 1983		
<b>Map Zone:</b>	Colorado Northern Zone		

Site	New Drills					
Site Position:		Northing:	1,278,589.08 ft	Latitude:	40° 5' 49.848 N	
From:	Lat/Long	Easting:	3,130,247.44 ft	Longitude:	105° 2' 3.912 W	
Position Uncertainty:		ft	Slot Radius:	in	Grid Convergence:	0.30 °

Well	Melbon Ranch 13-17					
Well Position	+N-S	13,808.0 ft	Northing:	1,293,265.97 ft	Latitude:	40° 8' 8.124 N
	+E-W	95,533.3 ft	Easting:	3,225,650.90 ft	Longitude:	104° 41' 34.548 W
Position Uncertainty		ft	Wellhead Elevation:	ft	Ground Level:	4,940.0 ft

<b>Wellbore</b>	Wellbore #1				
<b>Magnetics</b>	<b>Model Name</b>	<b>Sample Date</b>	<b>Declination (°)</b>	<b>Dip Angle (°)</b>	<b>Field Strength (nT)</b>
	IGRF200510	12/31/2009	8.96	66.91	53,172

<b>Design</b>	Melbon Ranch 13-17				
<b>Audit Notes:</b>					
<b>Version:</b>	<b>Phase:</b>	PROTOTYPE	<b>Tie On Depth:</b>	0.0	
<b>Vertical Section:</b>	<b>Depth From (TVD) (ft)</b>	<b>+N/-S (ft)</b>	<b>+E/-W (ft)</b>	<b>Direction (°)</b>	
	0.0	0.0	0.0	316.08	

<b>Plan Sections</b>										
Measured Depth (ft)	Inclination (°)	Azimuth (°)	Vertical Depth (ft)	+N/-S (ft)	+E/-W (ft)	Dogleg Rate (°/100ft)	Build Rate (°/100ft)	Turn Rate (°/100ft)	TFO (°)	Target
0.0	0.00	0.00	0.0	0.0	0.0	0.00	0.00	0.00	0.00	
900.0	0.00	0.00	900.0	0.0	0.0	0.00	0.00	0.00	0.00	
1,328.8	8.58	316.08	1,327.2	23.1	-22.2	2.00	2.00	0.00	316.08	
6,495.2	8.58	316.08	6,435.8	578.0	-556.5	0.00	0.00	0.00	0.00	
6,924.0	0.00	0.00	6,863.0	601.1	-578.8	2.00	-2.00	0.00	180.00	
7,974.0	0.00	0.00	7,913.0	601.1	-578.8	0.00	0.00	0.00	0.00	Melbon Ranch 13-1

# EnCana Corporation

## Planning Report - Geographic

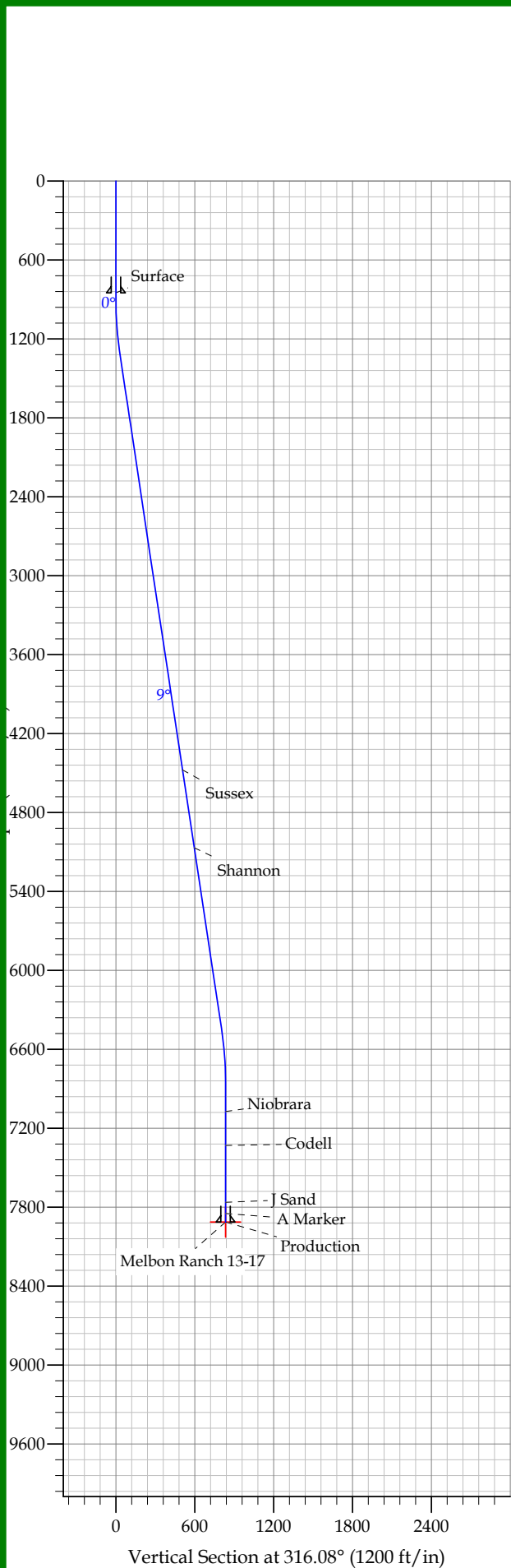
<b>Database:</b>	EDM	<b>Local Co-ordinate Reference:</b>	Well Melbon Ranch 13-17
<b>Company:</b>	DJ/Paradox/WTX	<b>TVD Reference:</b>	WELL @ 4953.0ft (Original Well Elev)
<b>Project:</b>	Wattenberg	<b>MD Reference:</b>	WELL @ 4953.0ft (Original Well Elev)
<b>Site:</b>	New Drills	<b>North Reference:</b>	True
<b>Well:</b>	Melbon Ranch 13-17	<b>Survey Calculation Method:</b>	Minimum Curvature
<b>Wellbore:</b>	Wellbore #1		
<b>Design:</b>	Melbon Ranch 13-17		

Planned Survey										
Measured Depth (ft)	Inclination (°)	Azimuth (°)	Vertical Depth (ft)	+N/-S (ft)	+E/-W (ft)	Map Northing (ft)	Map Easting (ft)	Latitude	Longitude	
0.0	0.00	0.00	0.0	0.0	0.0	1,293,265.97	3,225,650.90	40° 8' 8.124 N	104° 41' 34.548 W	
850.0	0.00	0.00	850.0	0.0	0.0	1,293,265.97	3,225,650.90	40° 8' 8.124 N	104° 41' 34.548 W	
Surface										
900.0	0.00	0.00	900.0	0.0	0.0	1,293,265.97	3,225,650.90	40° 8' 8.124 N	104° 41' 34.548 W	
1,328.8	8.58	316.08	1,327.2	23.1	-22.2	1,293,288.84	3,225,628.48	40° 8' 8.352 N	104° 41' 34.834 W	
4,513.2	8.58	316.08	4,476.0	365.1	-351.6	1,293,627.87	3,225,296.04	40° 8' 11.732 N	104° 41' 39.075 W	
Sussex										
5,111.9	8.58	316.08	5,068.0	429.4	-413.5	1,293,691.61	3,225,233.54	40° 8' 12.368 N	104° 41' 39.872 W	
Shannon										
6,495.2	8.58	316.08	6,435.8	578.0	-556.5	1,293,838.89	3,225,089.13	40° 8' 13.836 N	104° 41' 41.714 W	
6,924.0	0.00	0.00	6,863.0	601.1	-578.8	1,293,861.76	3,225,066.70	40° 8' 14.064 N	104° 41' 42.000 W	
7,134.0	0.00	0.00	7,073.0	601.1	-578.8	1,293,861.76	3,225,066.70	40° 8' 14.064 N	104° 41' 42.000 W	
Niobrara										
7,392.0	0.00	0.00	7,331.0	601.1	-578.8	1,293,861.76	3,225,066.70	40° 8' 14.064 N	104° 41' 42.000 W	
Codell										
7,824.0	0.00	0.00	7,763.0	601.1	-578.8	1,293,861.76	3,225,066.70	40° 8' 14.064 N	104° 41' 42.000 W	
J Sand										
7,909.0	0.00	0.00	7,848.0	601.1	-578.8	1,293,861.76	3,225,066.70	40° 8' 14.064 N	104° 41' 42.000 W	
A Marker										
7,974.0	0.00	0.00	7,913.0	601.1	-578.8	1,293,861.76	3,225,066.70	40° 8' 14.064 N	104° 41' 42.000 W	
Production - Melbon Ranch 13-17										

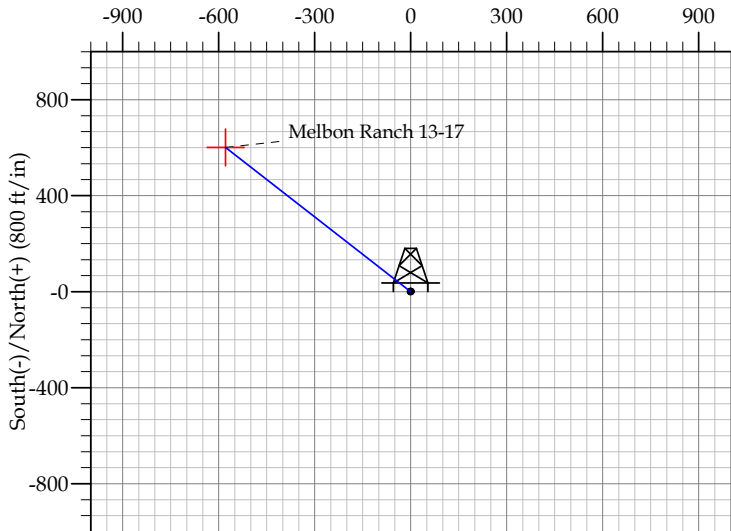
Design Targets										
Target Name	Dip Angle (°)	Dip Dir. (°)	TVD (ft)	+N/-S (ft)	+E/-W (ft)	Northing (ft)	Easting (ft)	Latitude	Longitude	
- hit/miss target										
- Shape										
Melbon Ranch 13-17	0.00	0.00	7,913.0	601.1	-578.8	1,293,861.76	3,225,066.70	40° 8' 14.064 N	104° 41' 42.000 W	
- plan hits target										
- Point										

Casing Points					
Measured Depth (ft)	Vertical Depth (ft)	Name	Casing Diameter (in)	Hole Diameter (in)	
850.0	850.0	Surface	8.625	12.250	
7,974.0	7,913.0	Production	4.500	7.785	

Formations						
Measured Depth (ft)	Vertical Depth (ft)	Name	Lithology	Dip (°)	Dip Direction (°)	
4,513.2	4,476.0	Sussex		0.00		
5,111.9	5,068.0	Shannon		0.00		
7,134.0	7,073.0	Niobrara		0.00		
7,392.0	7,331.0	Codell		0.00		
7,824.0	7,763.0	J Sand		0.00		
7,909.0	7,848.0	A Marker		0.00		



REFERENCE INFORMATION												
Co-ordinate (N/E) Reference: Well Melbon Ranch 13-17, True North												
Vertical (TVD) Reference: WELL @ 4953.0ft (Original Well Elev)												
Section (VS) Reference: Slot - (0.0N, 0.0E)												
Measured Depth Reference: WELL @ 4953.0ft (Original Well Elev)												
Calculation Method:												
WELL DETAILS: Melbon Ranch 13-17												
+N/-S		+E/-W		Northing		Ground Level: 4940.0		Easting		Latitude	Longitude	Slot
SECTION DETAILS												
Sec	MD	Inc	Azi	TVD	+N/-S	+E/-W	DLeg	TFace	VSec	Target		
1	0.0	0.00	0.00	0.0	0.0	0.0	0.00	0.00	0.0			
2	900.0	0.00	0.00	900.0	0.0	0.0	0.00	0.00	0.0			
3	1328.8	8.58	316.08	1327.2	23.1	-22.2	2.00	316.08	32.0			
4	6495.2	8.58	316.08	6435.8	578.0	-556.5	0.00	0.00	802.4			
5	6924.0	0.00	0.00	6863.0	601.1	-578.8	2.00	180.00	834.4			
6	7974.0	0.00	0.00	7913.0	601.1	-578.8	0.00	0.00	834.4	Melbon Ranch 13-17		



FORMATION TOP DETAILS		
TVDPath	MDPath	Formation
4476.0	4513.2	Sussex
5068.0	5111.9	Shannon
7073.0	7134.0	Niobrara
7331.0	7392.0	Codell
7763.0	7824.0	J Sand
7848.0	7909.0	A Marker
CASING DETAILS		
TVD	MD	Name Size
850.0	850.0	Surface 8.625
7913.0	7974.0	Production 4.500